

Separately installed scale

PW - SE 12




PW - SE 12	Spare parts list No. 037.98.3.1100	Series (code No.) 90.032
-------------------	----------------------------------------------	------------------------------------

Separately installed scale

PW - SE 12

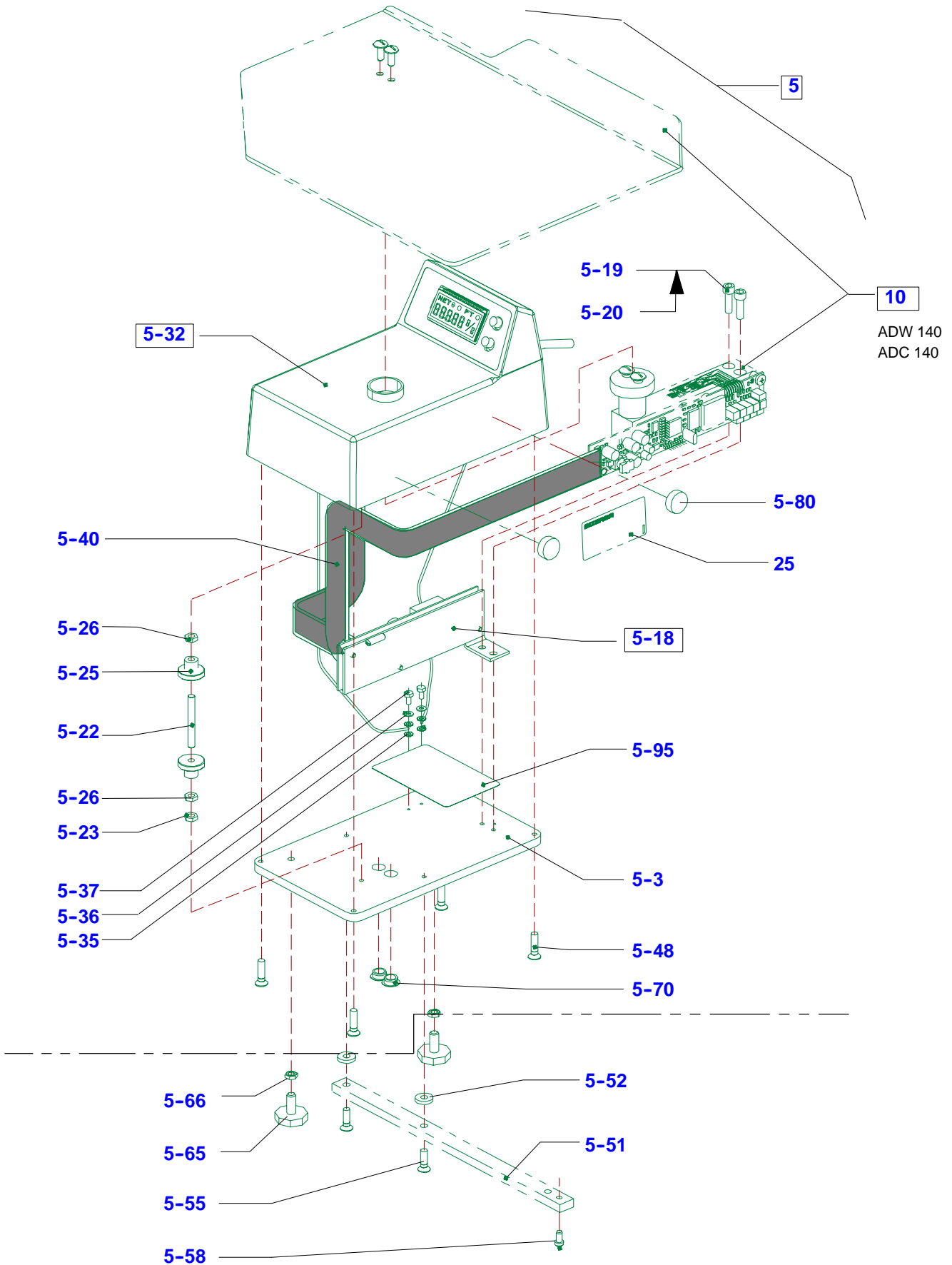
Content of drawings	Page of drawing
Separately installed scale with power cable and ADC 140	1
Separately installed scale with direct plug-in transformer unit and ADC 200	5
Assembly set SE 12	8
Assembly set SE 12 NSF	9
Assembly set SE 12 D	10
Assembly set SE 12 D NSF	11
Last page of drawings	11

12-2 Rimmed drawing position numbers mark the assemblies of spare parts. The spare parts, which may be ordered, are marked in a detailed way elsewhere in the spare parts list.

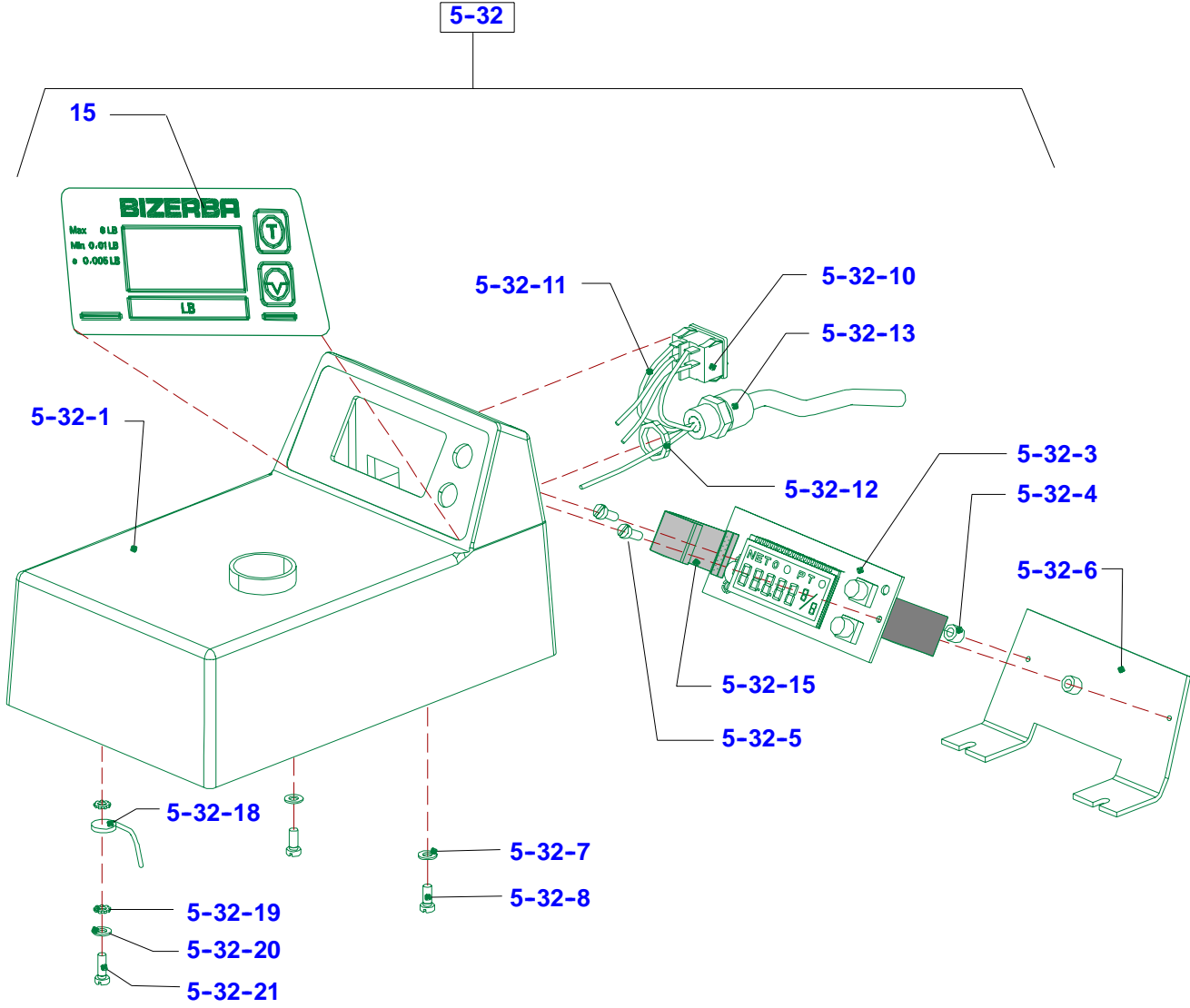
10-500-5  Drawing position numbers with an arrow refer to lubricating greases, lubricating oils or screw sealings used in connection with the relevant spare part.

The content of the parts number list is located before the text pages in the rear part of the spare parts list.

Separately installed scale with power cable and ADC 140

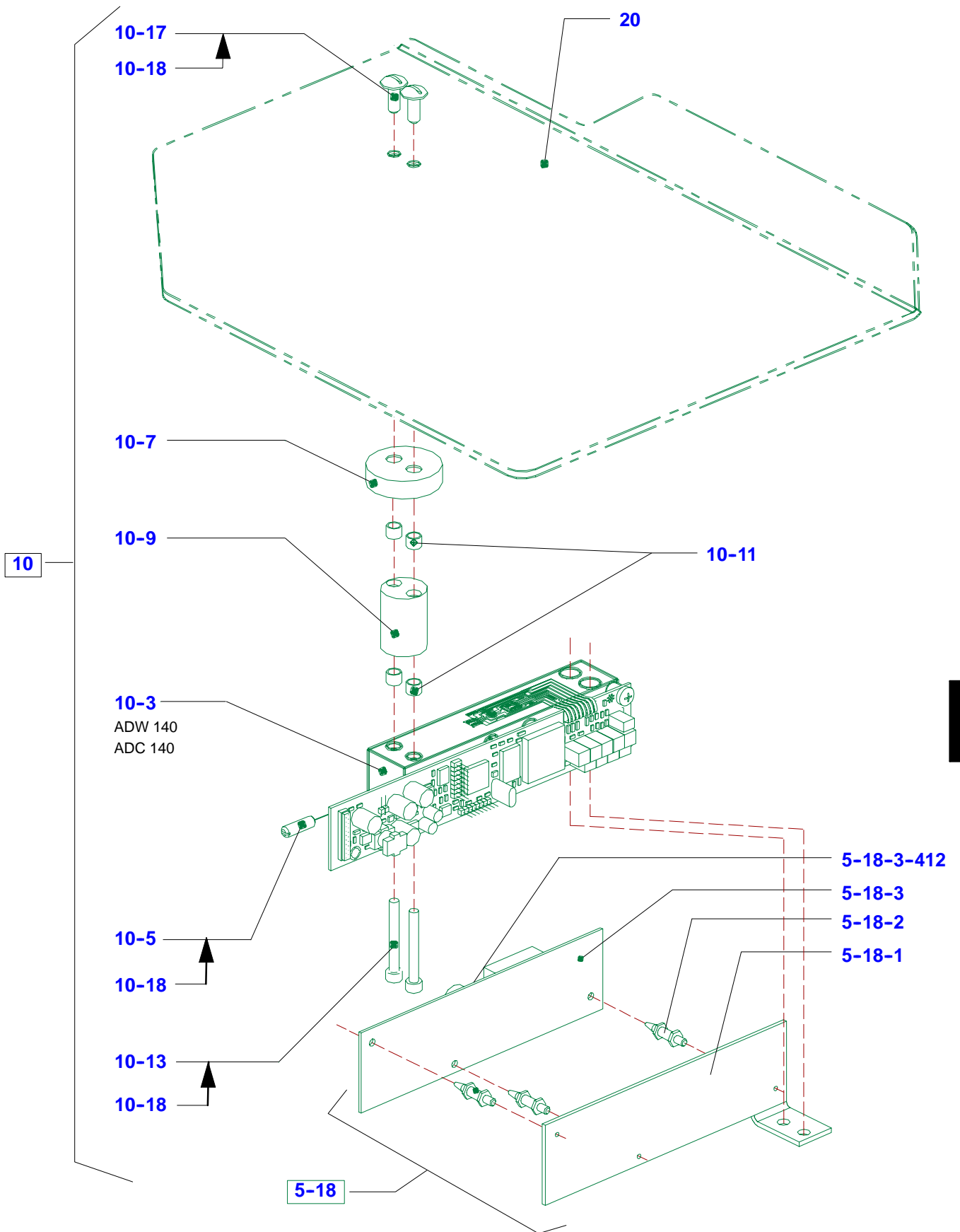


Separately installed scale with power cable and ADC 140

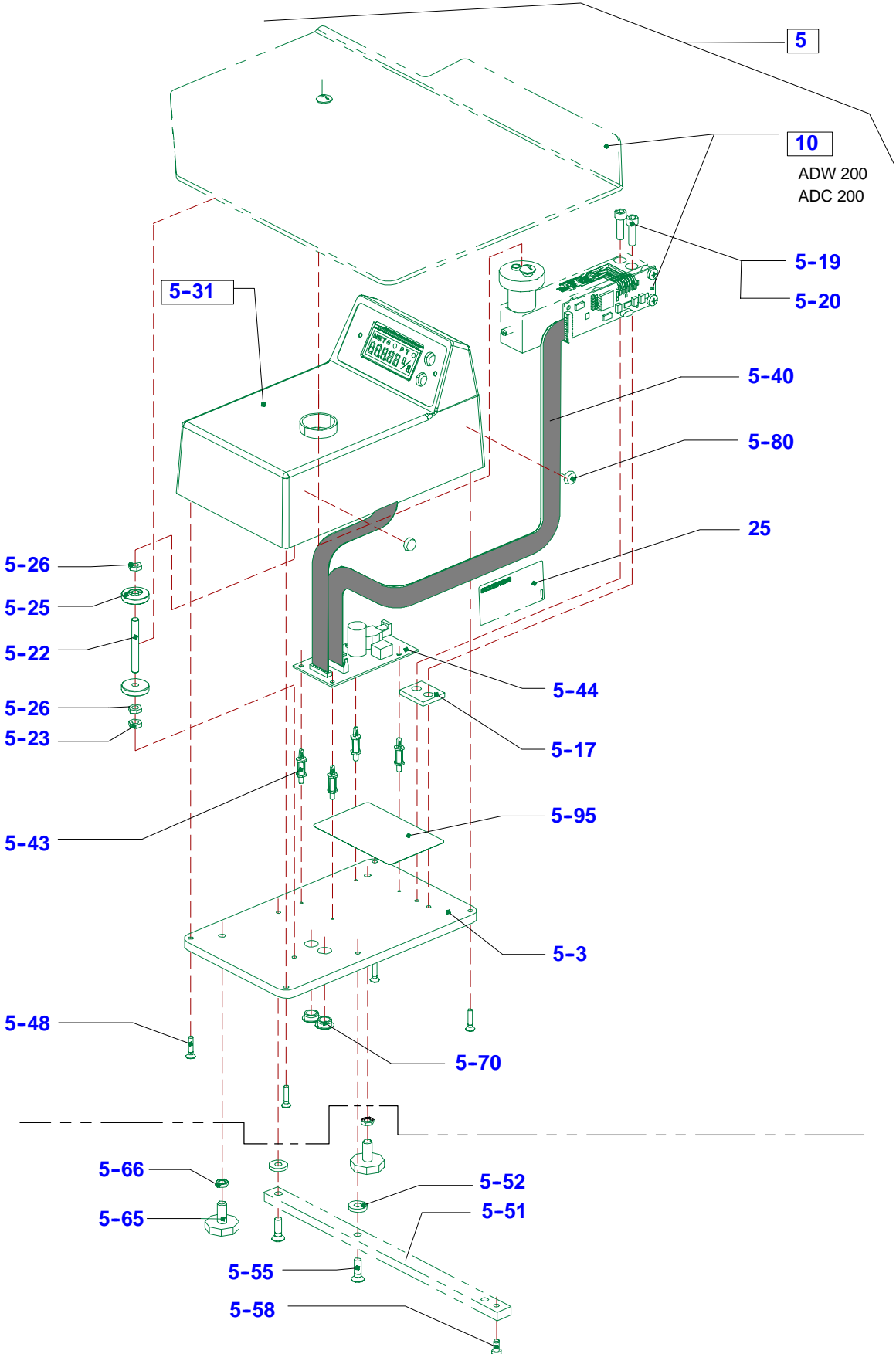


4

Separately installed scale with power cable and ADC 140

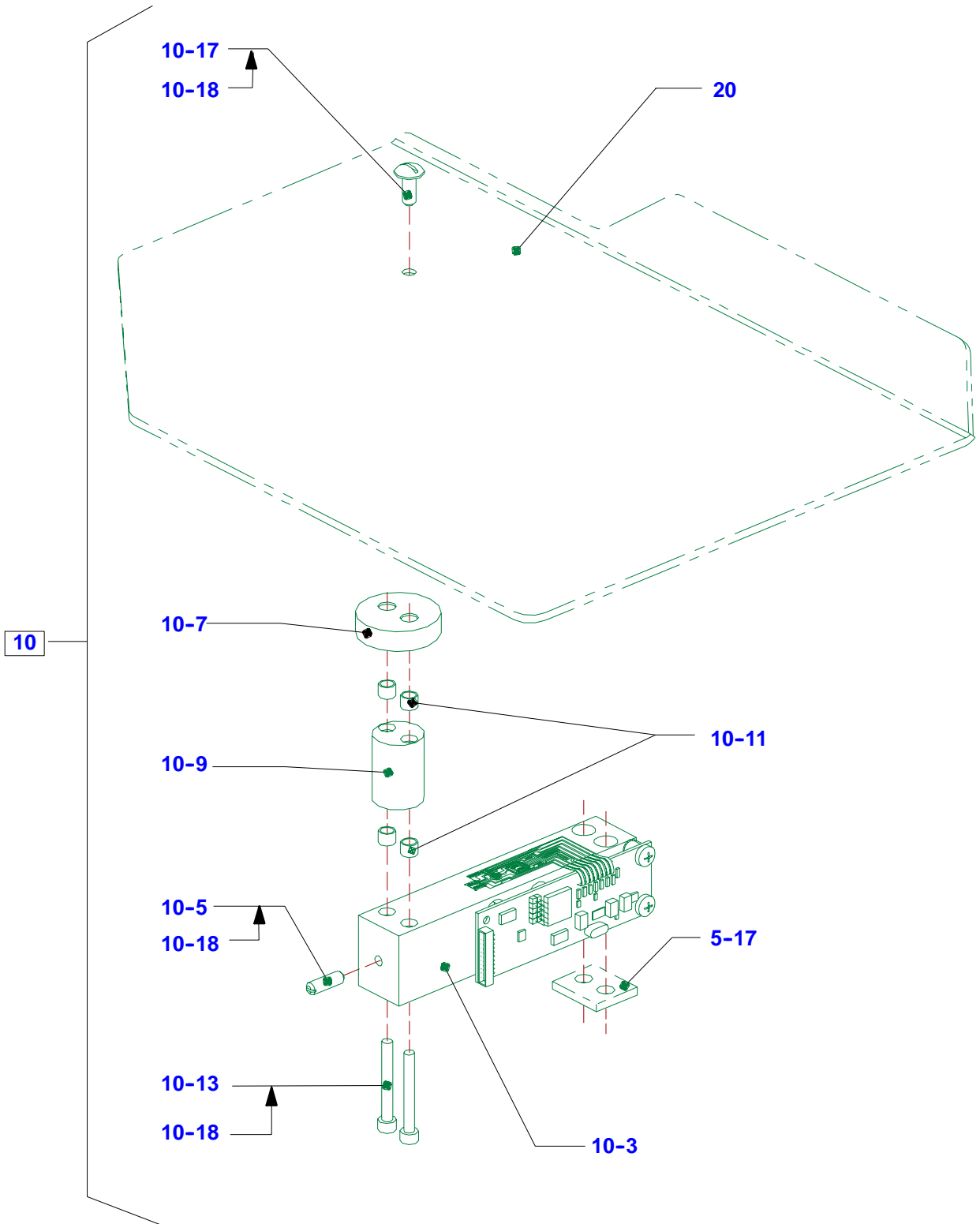


Separately installed scale with direct plug-in transformer unit and ADC 200

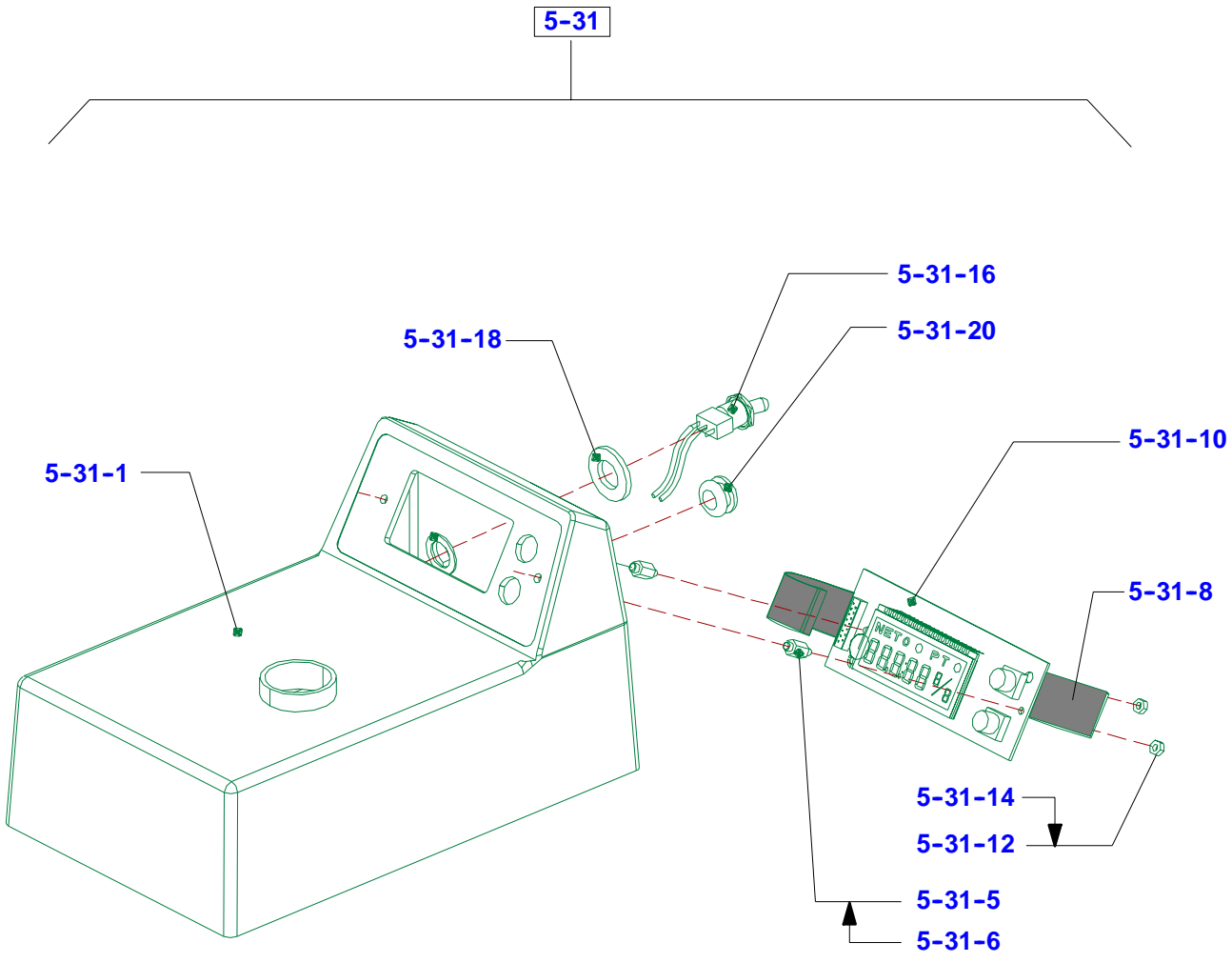


4

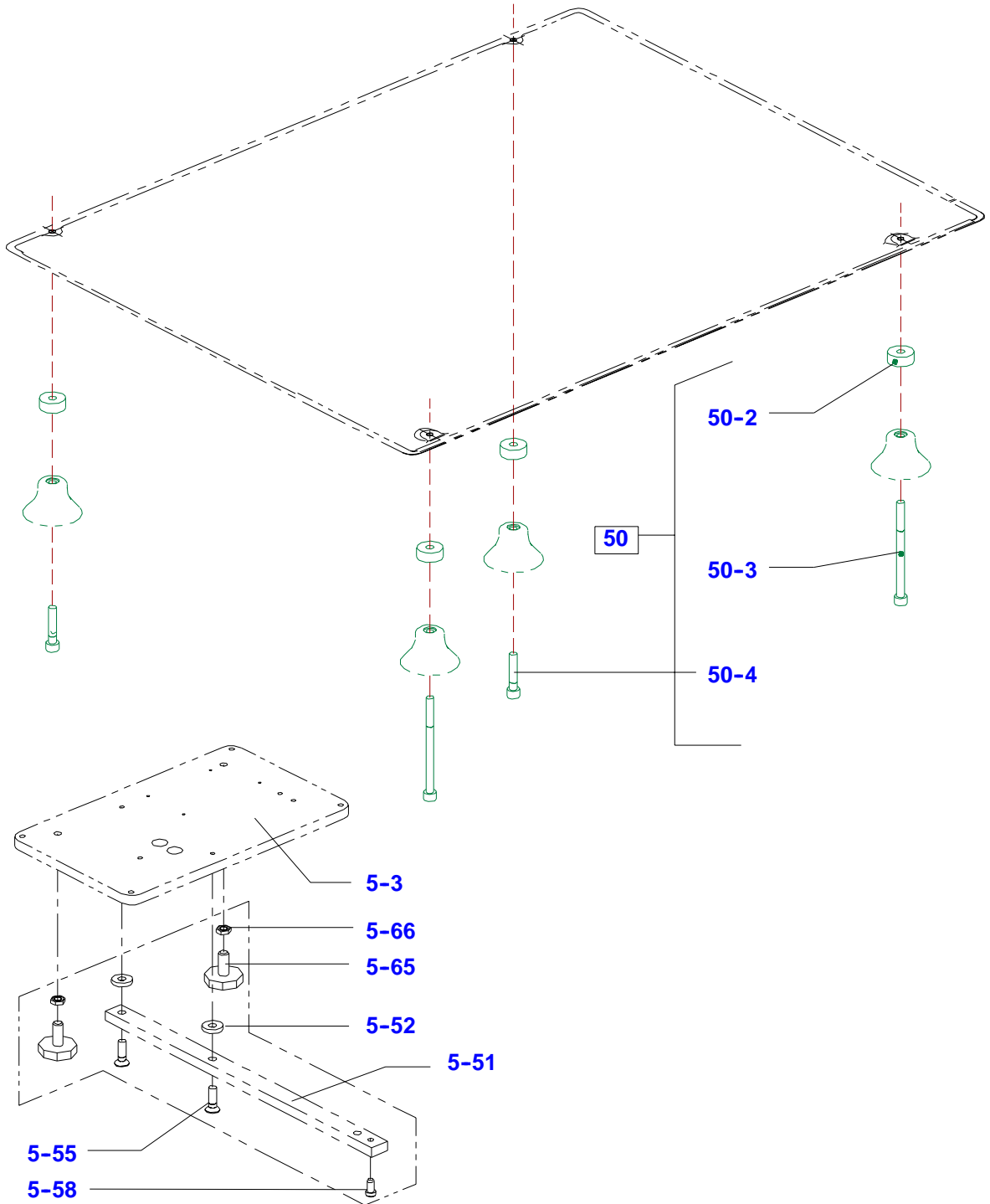
Separately installed scale with direct plug-in transformer unit and ADC 200



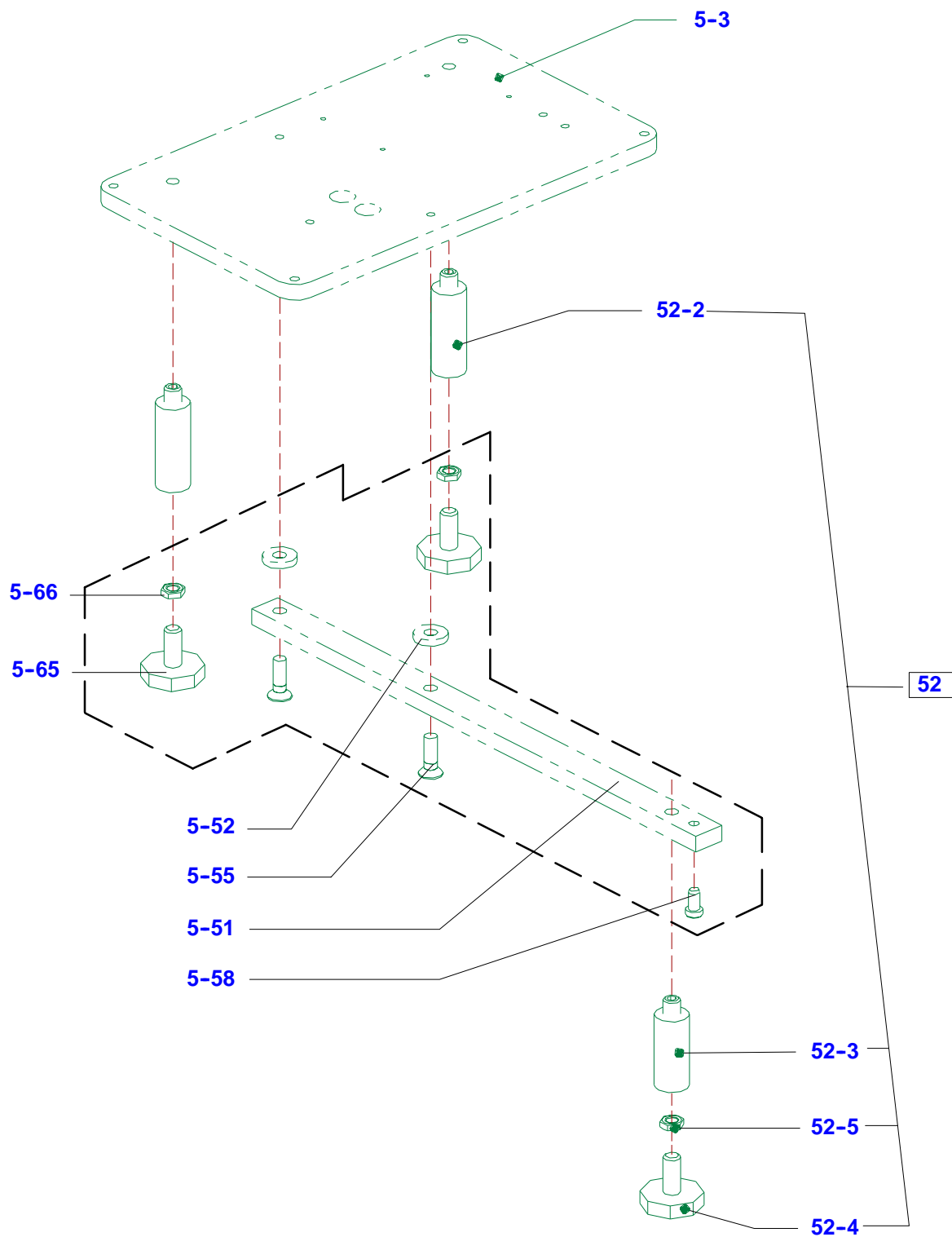
Separately installed scale with direct plug-in transformer unit and ADC 200



Assembly set SE 12

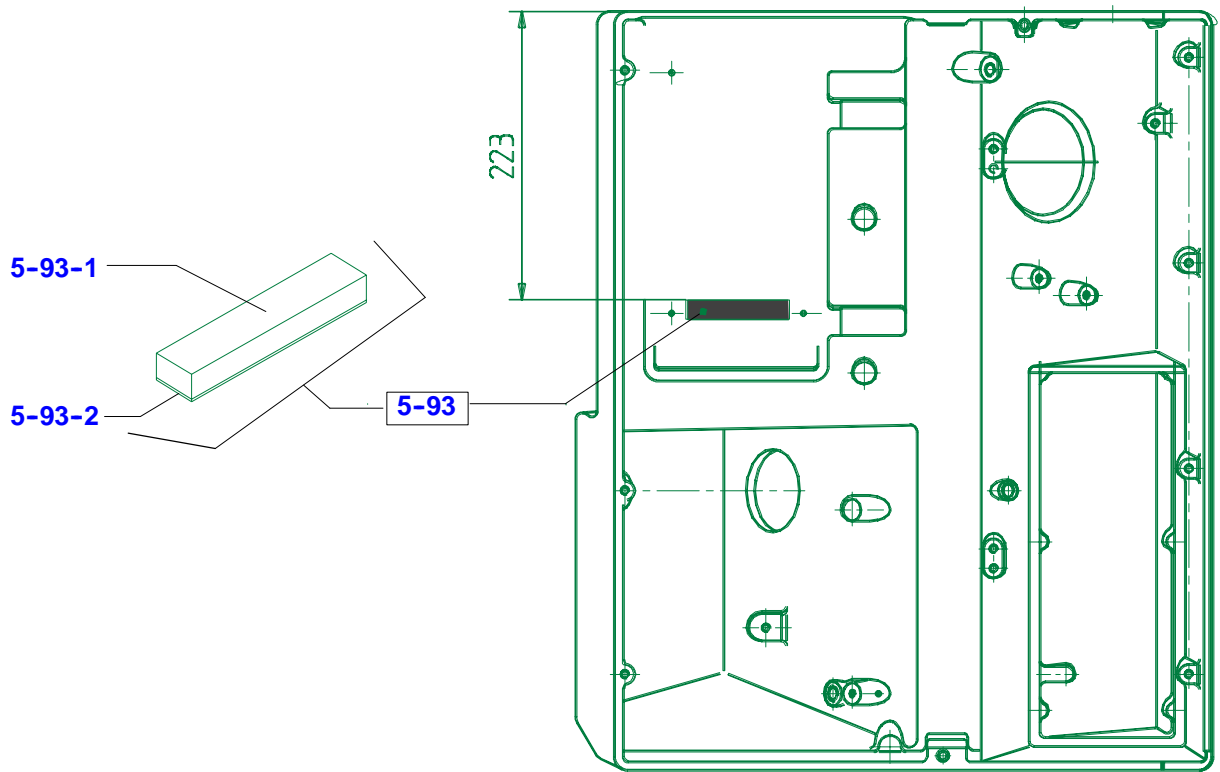


Assembly set SE 12 NSF

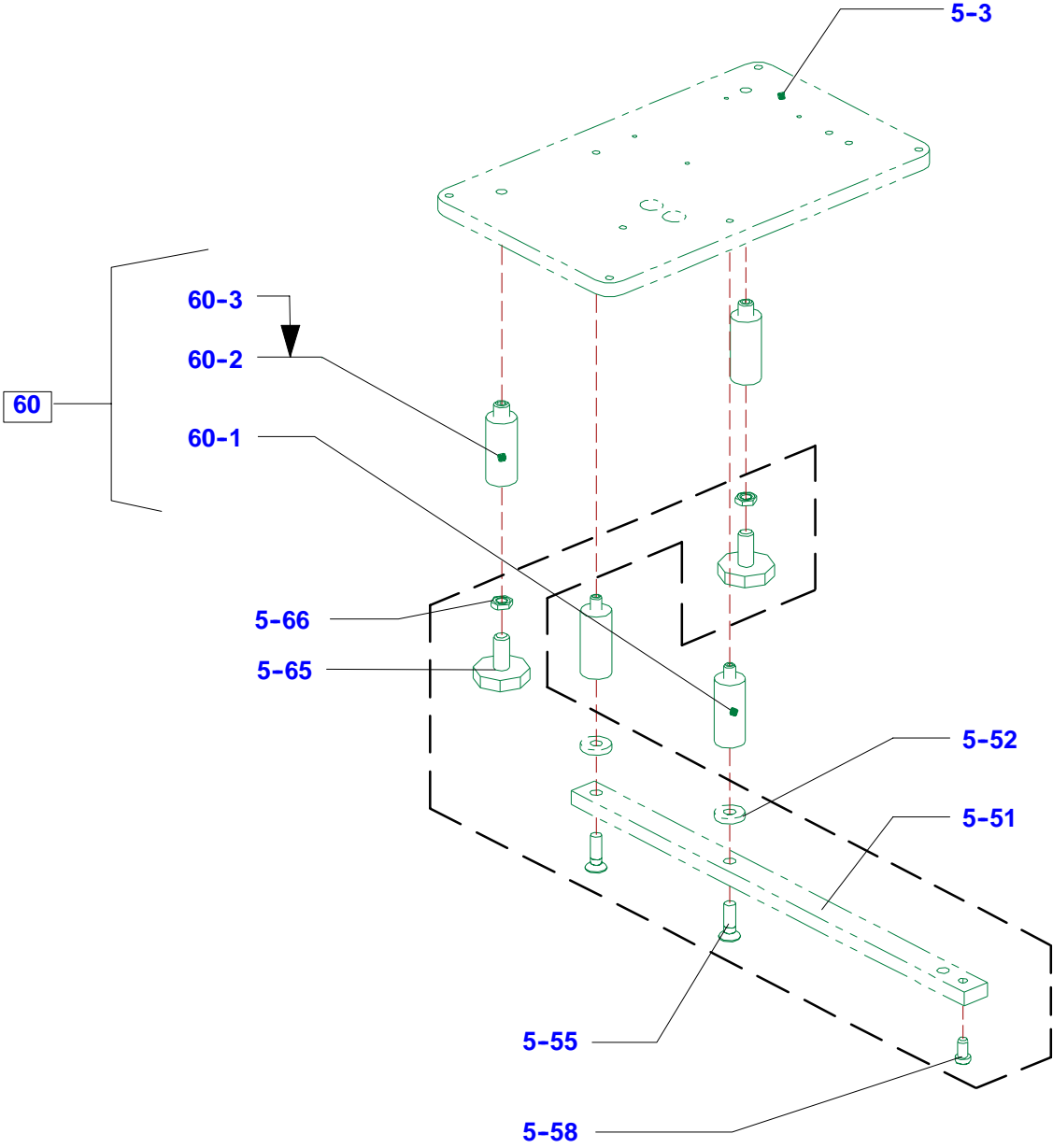


4

Assembly set SE 12 D

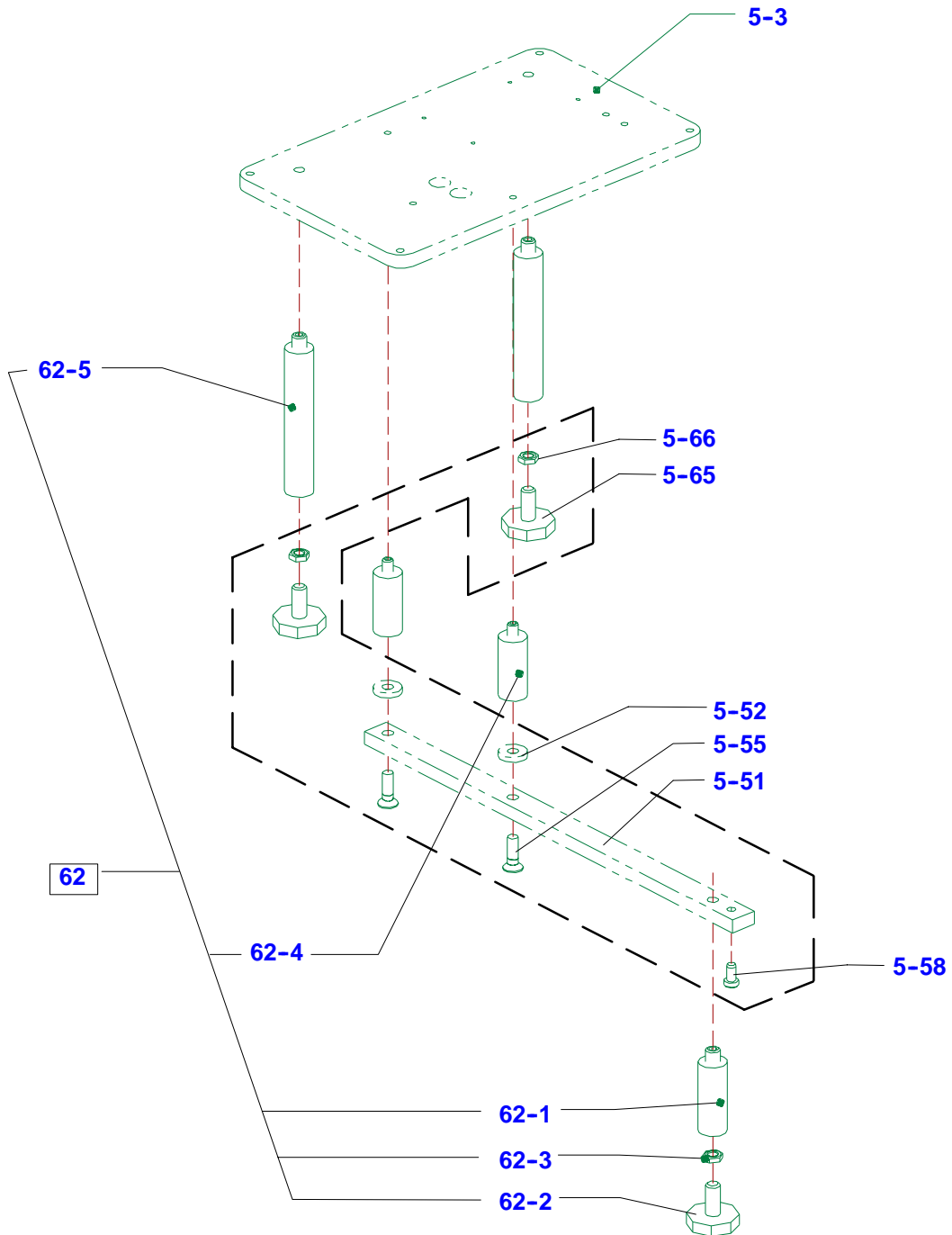


Assembly set SE 12 D



4

Assembly set SE 12 D NSF



Page of drawing
12

PW - SE 12

Series (code No.)
037.98.3.1100

Spare parts List No.
90.032

4

PW - SE 12	Spare parts list No. 037.98.3.1100	Series (code No.) 90.032
-------------------	----------------------------------------------	------------------------------------

Separately installed scale

PW - SE 12

Text content	Text page
Base plate, take-up device, housing, display, cables, power pack	1
Housing - direct plug-in transformer unit, display, cables, power pack	2
Supporting foot, stop bar, weighing set, front foil, load plate	3
Assembly set	4
Last text page	4

PW - SE 12	Spare parts list No. 037.98.3.1100	Series (code No.) 90.032
-------------------	----------------------------------------------	------------------------------------

4

Series (code No.) 90.032	Spare parts list No. 037.98.3.1100	PW - SE 12	Text page 1
------------------------------------	----------------------------------------------	-------------------	-----------------------

Number in drawing	Order number	Piece	Designation	from status onwards
5	60371000001	001	SEPARATELY INSTALLED SCALE SE 12 D CAST HOUSING WITH POWER CABLE VOLTAGE 120/60 LOAD PLATE SECURED FROM TURNING WITH 2 SCREWS	
	60371000002	001	SEPARATELY INSTALLED SCALE SE 12 D CAST HOUSING WITH DIRECT PLUG-IN TRANSFORMER UNIT LOAD PLATE SECURED FROM TURNING WITH 1 SCREW ONLY	
5-3	60371000201	001	BASE PLATE	
	60371000202	001	BASE PLATE /DIRECT PLUG-IN TRANSFORMER UNIT	
5-17	66570422100	001	SPACER 4 /DIRECT PLUG-IN TRANSFORMER UNIT	
5-18	60371001400	001	TAKE-UP DEVICE PREASSEMBLED	
5-18-1	60371000300	001	TAKE-UP DEVICE	
5-18-2	71067290001	003	SPACER LPR 8520	
5-18-3	61385410102	001	LPB POWER PACK	
5-18-3-412	71451350000	001	MICROFUSE TR T 0.5 F1	
5-19	57736200001	002	CHEESE-HEAD SCREW M 6X20 FASTENING BENDING BEAM LOAD CELL ON BASE PLATE	
5-20	95972950001		SCREW SEALING ADHESIVE LOCTIT.243	
5-22	56036500001	001	GRUB SCREW M 6X50	
5-23	56443600001	001	HEXAGON NUT FLAC BM 6	
5-25	56435620001	002	KNURLED-HEAD NUT M 6	
5-26	56443600001	002	HEXAGON NUT FLAC BM 6 OVERLOAD/UNDERLOAD	
5-31	60371000901	001	HOUSING PREASSEMBLED DIRECT PLUG-IN TRANSFOR. UNIT	
5-31-1	60371001101	001	HOUSING DIRECT PLUG-IN TRANSFORMER UNIT	
5-31-5	66570422400	002	FIXING BOLT DIRECT PLUG-IN TRANSFORMER UNIT	
5-31-6	95972950001		SCREW SEALING ADHESIVE LOCTIT.243	
5-31-8	61376022100	001	FLAT CABLE CPU-CONNECT. PLATE	
5-31-10	61375150101	001	LPB DISPLAY EWE 10 MM PINCH OFF THE PC BOARD RIGHT ABOVE WITH SIDE-CUTTING PLIERS 10X3 MM (WITH CAST HOUSING ONLY)	
5-31-12	56455300001	002	HEXAGON NUT M 3	
5-31-14	95972950001		SCREW SEALING ADHESIVE LOCTIT.243	
5-31-16	60371013000	001	SWITCH COMPL.	
5-31-18	56739130000	001	WASHER A 13	
5-31-20	71051000000	001	LEAD-THROUGH SLEEVE DA90/11040	

Text page 2	PW - SE 12	Spare parts list No. 037.98.3.1100	Series (code No.) 90.032
-----------------------	-------------------	----------------------------------------------	------------------------------------

Number in drawing	Order number	Piece	Designation	from status onwards
x	x	x	x	x
5-32	60371000900	001	HOUSING PREASSEMBLED	
5-32-1	60371001100	001	HOUSING	
5-32-3	61375150101	001	LPB DISPLAY EWE 10 MM PINCH OFF THE PC BOARD RIGHT ABOVE WITH SIDE-CUTTING PLIERS 10X3 MM (WITH CAST HOUSING ONLY)	
5-32-4	60371000400	002	SPACER RING	
5-32-5	56951100001	002	PAN HEAD SCREW M 4X10	
5-32-6	60371000600	001	ANGLE PLATE	
5-32-7	56739040001	002	WASHER A 4.3	
5-32-8	56808440001	002	SELF-TAPPING SCREW CM4X12	
5-32-10	71218300000	001	ROCKER SWITCH 1802.1108	
5-32-11	60376110100	002	STRAND BK L=160MM UL AWG18	
5-32-12	71161090000	001	NUT PG 9	
5-32-13	71011470001	001	SCREW COUPLING ST 53015010	
5-32-15	61376097202	001	FLAT CABLE POWER PACK-DISPLAY	
5-32-18	60286102400	001	STRAND GROUND WIRE L=300 DISPLAY	
5-32-19	57758400001	002	TOOTHED LOCK WASHER A 4.3	
5-32-20	56739040001	001	WASHER A 4.3	
5-32-21	56818430001	001	SELF-TAPPING SCREW CM4X 8T20	
5-35	57758400001	004	TOOTHED LOCK WASHER A 4.3	
5-36	56739040001	002	WASHER A 4.3	
5-37	56805750001	002	OVAL-HEAD SCREW M 4X12T20 GROUND FASTENING ON BASE PLATE	
5-40	61236020100	001	FLAT CABLE ADC140-POWER PACK CONNECTION BENDING BEAM LOAD CELL-POWER PACK	
	66576100201	001	FLAT CABLE 20P/2MM.2 FOR ADC 200 / MODEL WITH DIRECT PLUG-IN TRANSFO. UNIT	
5-43	71067270001	004	SPACER 1 LPR 8523 N	
5-44	60375210100	001	LPB-POWER PACK SEPARATELY INSTALLED SCALE FOR MODEL WITH DIRECT PLUG-IN TRANSFORMER UNIT	
5-48	57451280001	004	COUNTERSUNK SCREW SC M 4X16T20 FASTENING BASE PLATE-HOUSING	

4

Series (code No.) 90.032	Spare parts list No. 037.98.3.1100	PW - SE 12	Text page 3
------------------------------------	----------------------------------------------	-------------------	-----------------------

Number in drawing	Order number	Piece	Designation	from status onwards
x	x	x	x	x
5-51	60371001301	001	ARM WITH ADDITIONAL WEIGHT	
5-52	60371004400	002	SPACER RING BETWEEN BASE PLATE AND ARM	
5-55	57440340001	002	COUNTERSUNK SCREW M 6X16	
5-58	60220003700	001	STOP PIN	
5-65	50383040001	001	SUPPORTING FOOT IDEAL M 8X25	
5-66	56444800001	002	HEXAGON NUT FLAC BM 8	
			POS.51-66 WILL BE ASSEMBLED AT SITE WITH THE RELEVANT ASSEMBLY SET	
5-70	40220000201	002	DUMMY PLUG 1 KNURLED LOCKED ON BASE PLATE	
5-80	50383540001	002	BUFFER SJ-5012 GLUED AT THE SIDE TO THE MACHINE AND AT THE FRONT AND AT THE BACK TO THE OUTER SCALE WALL	
5-93	60381002000	001	STOP BAR PREASSEMBLED SE 12 D	
5-93-1	60381002100	001	STOP BAR SE 12 D	
5-93-2	29765500001		TESAFIX NO496 WIDTH: 50X0,2 ROLL WIDTH 50 / STRIP OF 80X15MM NECESSARY	
5-95	60374820100	001	ADHESIVE PLATE 120V SEPARATELY INSTALLED SCALE	
10	60371013300	001	WEIGHING SET ADC-140 USA VERSION IN LB	
	60371013500	001	WEIGHING SET ADC-200	
10-3	60371004001	001	WEIGHING SYSTEM WS12 C3/12/6 ADC 140	
	60371004100	001	WEIGHING SYSTEM WS12 C3/12/6 ADC 200	
10-5	57120190001	001	SHOULDER STUD M 6X20	
10-7	60371001601	001	COVER	
10-9	60371000701	001	SPACER	
10-11	60371001700	004	FIXATION DEVICE	
10-13	57743330001	002	CHEESE-HEAD SCREW M 5X40	
10-17	56972790001	002	OVAL-HEAD SCREW M 6X16	
10-18	95972950001		SCREW SEALING ADHESIVE LOCTIT.243	
15	60371002000	001	FRONT FOIL	
20	60371001501	001	LOAD PLATE SECURED FROM TURNING WITH 2 SCREWS	
	60371001502	001	LOAD PLATE SECURED FROM TURNING WITH 1 SCREW FOR VERSION WITH DIRECT PLUG-IN TRANSFORMER UNIT	
25	60371005000	001	SPECIFICATION PLATE SEPARATELY INSTALLED SCALE ADC 140	
	60371015000	001	SPECIFICATION PLATE SEPARATELY INSTALLED SCALE ADC 200	

Text page 4	PW - SE 12	Spare parts list No. 037.98.3.1100	Series (code No.) 90.032
-----------------------	-------------------	----------------------------------------------	------------------------------------

Number in drawing	Order number	Piece	Designation	from status onwards
x	x	x	x	x
50	60371020000	001	ASSEMBLY SET SE 12	
50-2	60300020003	004	INTERMEDIATE RING	
50-3	57743540001	002	CHEESE-HEAD SCREW M 6X80	
50-4	57743460000	002	CHEESE-HEAD SCREW M 6X30	
52	60371021000	001	ASSEMBLY SET NSF SE 12	
52-2	60371004500	002	DISTANCE PIN PREASSEMBLED	
52-3	60381000500	001	DISTANCE PIN PREASSEMBLED	
52-4	50383040000	001	SUPPORTING FOOT IDEAL M 8X25	
52-5	56444800001	001	HEXAGON NUT FLAC BM 8	
60	60371023000	001	ASSEMBLY SET SE 12 D	
60-1	60381000800	002	DISTANCE PIN PREASSEMBLED	
60-2	60381000500	002	DISTANCE PIN PREASSEMBLED	
60-3	95972950001		SCREW SEALING ADHESIVE LOCTIT.243	
62	60371022000	001	ASSEMBLY SET NSF SE 12 D	
62-1	60371004500	001	DISTANCE PIN PREASSEMBLED	
62-2	50383040000	001	SUPPORTING FOOT IDEAL M 8X25	
62-3	56444800001	001	HEXAGON NUT FLAC BM 8	
62-4	60381000800	002	DISTANCE PIN PREASSEMBLED	
62-5	60381001500	002	DISTANCE PIN PREASSEMBLED	