



TURBOFRY 2000

Reference Materials



BMDI05-1 INQUIRE BILL OF MATERIALS DATA Thursday April 17, 2003

Item-ID: <B6645801-C

>FLTR,PAN ASSY TF2000

UOM:EA

Qty/Box: 1.00 Boxes/Pallet:

1 Input Qty: 1

EFF-Date: 04/17/2003

Component-ID

Description

Cd Qty-Per TY Seq

B6645901
P0011300
P6071062

FLTR,PAN WLDMT TF2000
SCR,10-24 X 3/8 INDT HEX
CSTR,PMF 2 W/TP PL

FA 1.00 R 1
FS 16.00 R 3
CP 4.00 R 2

F2=MAIN MENU F4=LOOKUP F7=BOM F9=REFRESH F11=PREV PGDN=NEXT

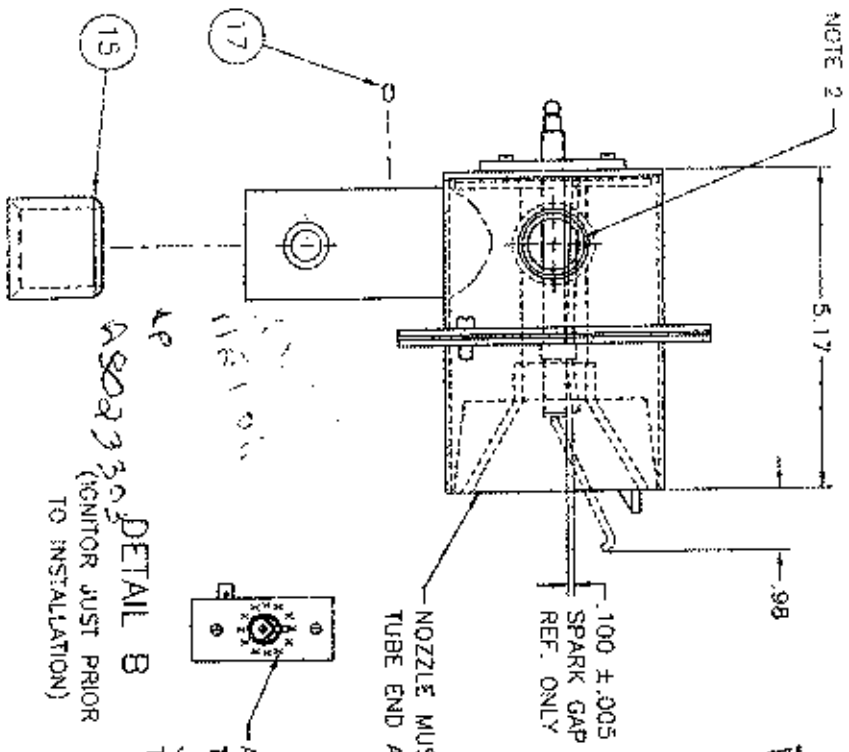


Warranty Unit
MASTER: Lookup
MENU



A2

SEE NOTE 2

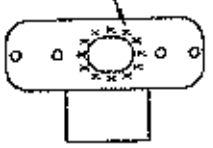


NOZZLE MUST BE POSITIONED FLUSH WITH TUBE END AS SHOWN: TOL ± .07.

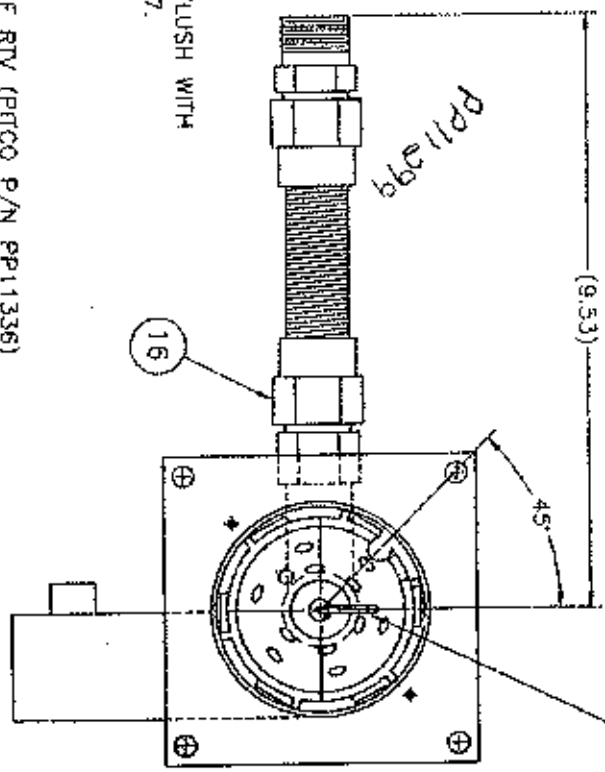
APPLY 1/8" BEAD OF RTV (PITCO P/N PP11336) TO BURNER SIDE OF IGNITOR MOUNTING PLATE JUST PRIOR TO INSTALLING THE IGNITOR. THE X'S SHOW PLACEMENT OF THE RTV.

APPLY 1/8" BEAD OF RTV (PITCO P/N PP11336) TO FACE OF GAS INLET WELDMENT (ITEM 1) JUST PRIOR TO INSTALLING INTO THE BURNER HOUSING. THE X'S SHOW PLACEMENT OF THE RTV.

DETAIL C
(GAS INLET JUST PRIOR TO INSTALLATION)



ELECTRODE MUST BE POSITIONED UPRIGHT AS SHOWN



DETAIL A
VIEW ASSEMBLED

TABLE 1	
P/N	GAS
B8025201	NAT
B8025202	LP

THE INFORMATION CONTAINED ON THIS DOCUMENT IS THE PROPERTY OF SOUTHERN MANUFACTURING COMPANY, INC. AND IS LOANED TO YOU BY SOUTHERN MANUFACTURING COMPANY, INC. IT IS TO BE USED FOR THE PURPOSES SPECIFIED AND IS NOT TO BE REPRODUCED OR TRANSMITTED IN ANY FORM OR BY ANY MEANS, ELECTRONIC OR MECHANICAL, INCLUDING PHOTOCOPYING, RECORDING, OR BY ANY INFORMATION STORAGE AND RETRIEVAL SYSTEM. SOUTHERN MANUFACTURING COMPANY, INC. CONRO, AL 36520 U.S.A.

PART NO: SEE TABLE
SCALE: NTS SH 2 OF 2
REV: B80-252 B

EMDI05-1 INQUIRE BILL OF MATERIALS DATA Thursday April 17, 2003

Item-ID: <B8025201 >PG, BNR ASSY NAT TF2000 UOM: EA
Qty/Box: 1.00 Boxes/Pallet: 1 Input Qty: 1 Eff-Date: 04/17/2003

Component-ID	Description	Cd	Qty-Per	Ty	Seq
A8003001	PG, GLASS SIGHT 1.25 OD TF20	CP	1.00	R	8
A8003301	PG, WSHR SIGHT GLASS RINGS TF	FA	1.00	R	9
A8007901	PG, INSULN SIGHT GLASS	PT	1.00	R	7
A8019401	PG, GSKT BMR TF2000	CP	1.00	R	4
A8020302	PG, NOZ BMR TF2000	CP	1.00	R	5
A8023301	PG, COLLAR AIR NAT TF2000	CP	1.00	R	15
B8032201	BNR, NEST WELDMT TF2000	FA	1.00	R	3
P0075200	SCR, 8-18 X 1/2 HEX SLF DR	FS	2.00	R	14
P7037350	MIP, BLK 3/4 CH	CP	1.00	R	11
PP10690	SCR, 6-32 X 1/2 TH PHILLIPS	FS	4.00	R	13
PP10692	SCR, 10-24 X 5/16 TH PHILLIP	FS	1.00	R	17
PP10752	SCR, 10-32 X 1/2 RMH PHI ZN	FS	4.00	R	12

ESC-FXIT F2-MAIN MENU F4=LOOKUP F7-RQM F9=REFRESH PGUP-PPV PGDN=NEXT

AHP
Warranty Unit
MASTER
Lookup
MENU





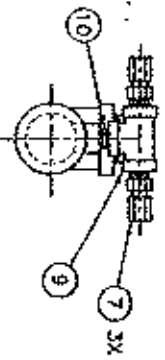
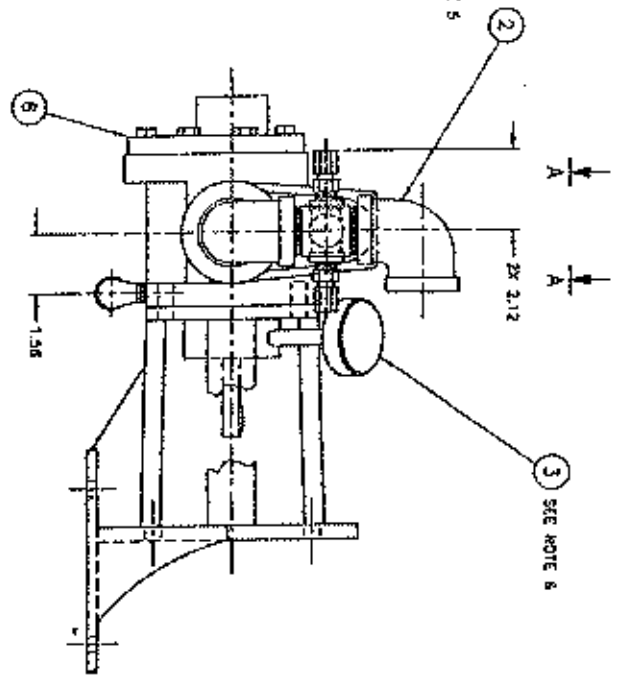
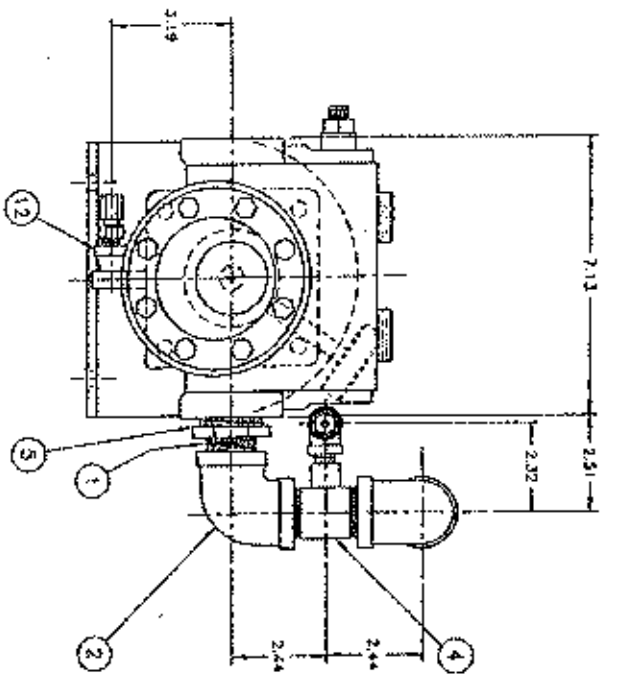
BMDI05-1 INQUIRE BILL OF MATERIALS DATA Thursday April 17, 2003

Item-ID:<B8025201 >PG,BNR ASSY MAT TF2000 UOM:EA
Qty/Box: 1.00 Boxes/Pallet: 1 Input Qty: 1 Eff-Date:04/17/2003

Component-ID	Description	Cd	Qty-Per	Ty	Seq
PP11298	IGNTR,FLM SENSOR SELF GROUND CP			1.00 R	6
PP11299	TB,FLEX W/FTGS 3/4 X 7.5 CP			1.00 R	16

ESC=EXIT F2=MAIN MENU F4=LOOKUP F7=BOM F9=REFRESH PGUP=PREV PGDN=NEXT

Approach MASTER Lookup MENU



VIEW A-A
(PARTIAL VIEW)

- NOTES:
1. ALL DIMENSIONS ARE REFERENCE DIMENSIONS.
 2. MAXIMAL THREAD ENGAGEMENT ON 1" & 1-1/4" THREADS IS .68".
 3. NOMINAL THREAD ENGAGEMENT ON 1/4" THREADS IS .37".
 4. USE A WIRE BRUSH TO REMOVE FOREIGN DEBRIS FROM ALL THREADS. CLEAN ALL MACHINE OIL RESIDUE FROM BOTH INTERNAL AND EXTERNAL THREADS. APPLY SUDSIVE RTV (PITCO #746 50201923) TO EXTERNAL THREADS BEFORE TIGHTENING.
 5. INSTALL ITEM (8) AND (10) WITH ITEM (4). PRIOR TO INSTALLING ITEM (4) WITH ITEM (2).
 6. REMOVE THREAD CAP PROVIDED BY VENDOR, AND INSTALL ITEM 3 HAND TIGHT. THEN TIGHTEN 1/2-3/4 TURN MORE.

REV	DATE	BY	CHKD	DESCRIPTION
1	11/12/00
2	11/12/00
3	11/12/00
4	11/12/00
5	11/12/00
6	11/12/00
7	11/12/00
8	11/12/00
9	11/12/00
10	11/12/00
11	11/12/00
12	11/12/00

REV	DATE	BY	CHKD	DESCRIPTION
1	11/12/00
2	11/12/00
3	11/12/00
4	11/12/00
5	11/12/00
6	11/12/00
7	11/12/00
8	11/12/00
9	11/12/00
10	11/12/00
11	11/12/00
12	11/12/00

REV	DATE	BY	CHKD	DESCRIPTION
1	11/12/00
2	11/12/00
3	11/12/00
4	11/12/00
5	11/12/00
6	11/12/00
7	11/12/00
8	11/12/00
9	11/12/00
10	11/12/00
11	11/12/00
12	11/12/00

SERVICE ONLY
 THE DOG
 THE DOG

PITCO FRIULATOR, INC.
 200 S. 1015
 ANGLE # 5
 SEE BOU
 FILTER, PIPING PUMP
 ASSEMBLY
 866-463 F



BMDI05-1 INQUIRE BILL OF MATERIALS DATA Thursday April 17, 2003

Item-ID:<B6646301 >FLTR,PG PMP ASSY TF2000 UOM:EA
Qty/Box: 1.00 Boxes/Pallet: 1 Input Qty: 1 Eff-Date:04/17/2003

Component-ID	Description	Cd	Qty-Per	Ty	Seq
B6663001	FLTR,NEST PMP WELD TF2000	EA	1.00	R	3
P7036206	BSHG,RDCR HEX 1-1/4XL NPT B	CP	1.00	R	5
P7037048	NIP, BLK 1/4 CL	CP	1.00	R	10
P7037400	NIP, BLK 1 CL	CP	1.00	R	1
P7037682	ELB, BLK 90 1	CP	2.00	R	2
PP10381	TEE, BLK 1/4	CP	1.00	R	9
PP10916	FTG, CPRSN CR TEMP PROBE	CP	3.00	R	7
PP11233	ELB, BLK 90 STR 1/4	CP	1.00	R	12
PP11346	PUMP, OIL GEAR W/BRKT RLF VL	CP	1.00	R	6

ESC=EXIT F2=MAIN MENU F4=LOOKUP F7=BOM F9=REFRESH PGUP=PRV PGDN=NEXT



BMDI05-1 INQUIRE BILL OF MATERIALS DATA Thursday April 17, 2003

Item-ID: <B2909001 >ENTR BOX, ASSY TF2000 UOM: EA
Qty/Box: 1.00 Boxes/Pallet: 1 Input Qty: 1 FFE-Date: 04/17/2003

Component-ID	Description	Cd	Qty-Per	Ty	Seq
700268	SCHEM, TF2000	FA	1.00	R	500
A2951601	ENTR BOX, COV TF2000	FA	1.00	R	1
A2951701	ENTR BOX, PLT RR TF2000	FA	1.00	R	2
A2951801	ENTR BOX, BDY TF2000	FA	1.00	R	3
A2951901	ENTR BOX, GD AIR FLTR TF2000	FA	1.00	R	4
A2952001	ENTR BOX, BRKT MTG BLO TF2000	FA	1.00	R	5
A2952101	ENTR BOX, BRKT MTG RLY TF2000	FA	1.00	R	6
A2952301	ENTR BOX, PLT FR TF2000	FA	1.00	R	8
A2952401	ENTR BOX, PLT ACCESS FLTR TF	FA	1.00	R	9
A2952501	ENTR BOX, TRAY MTG CMPNT TV2	FA	1.00	R	10
A2952601	ENTR BOX, PLT ACS CMPNT TF20	FA	1.00	R	11
A6071501	LBL, OVRLY ENTR BOX TF2000	CP	1.00	R	30

ESC=EXIT F2=MAIN MENU F4=LOOKUP F7=BOM F9=REFRESH PGUP=PREV PGDN=NEXT

APRIL 17 2003 10:00 AM

Approach Warranty Unit

MASTER Lookup MENU



BMDI05-1 INQUIRE BILL OF MATERIALS DATA Thursday April 17, 2003

Item-ID:<B2909001 >ENTR BOX,ASSY TF2000 UOM:EA
Qty/Box: 1.00 Boxes/Pallet: 1 Input Qty: 1 Eff-Date:04/17/2003

Component-ID	Description	Cd	Qty-Per	Ty	Seq
B2911301	ENTR BOX,SLIDE WIDMT TF2000	FA	1.00	R	7
B6727401	WRG HARN,ENTR BOX TF2000	FA	1.00	R	31
P0082400	WSHR,LOCK #10 ZN (SPLIT)	FS	2.00	R	45
P0091400	NUTSERT 6-32 UNC	FS	20.00	R	33
P0092500	NUTSERT 10-24 UNC	FS	9.00	R	32
P5045044	LAMP,28V AMBER RECT	CP	1.00	R	27
P5045241	CLP,GRND ELEC	FS	1.00	R	23
P5046686	RELAY,24VAC DPDT MTG TAB	CP	3.00	R	21
P6071516	HANDLE CHROME 3 CTOC	FS	1.00	R	14
PP10093	SW,RKR SPDT W/BK (1-1)	CP	1.00	R	15
PP10303	SCR,M4 PMH	CP	2.00	R	41
PP10429	XENR,80VA 120/208/240V T0 2 CP	CP	1.00	R	28

ESC=EXIT F2=MAIN MENU F4=LOOKUP F7=BOM F9=REFRESH PGUP=PREV PGDN=NEXT



APPROACH
MASTER: Warrant Unit
MENU: Lookup













Auto 

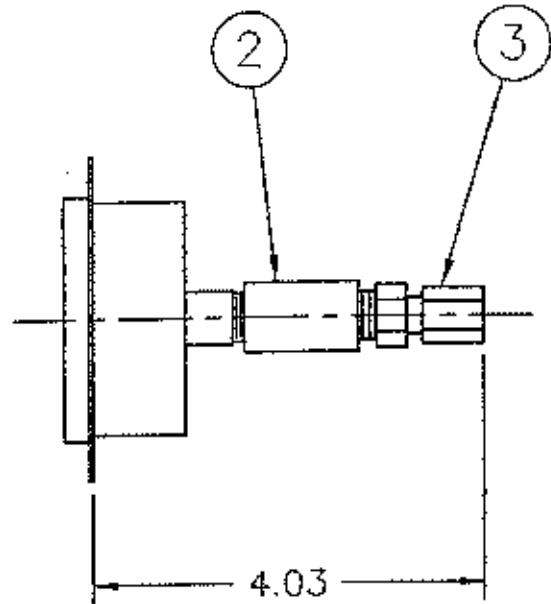
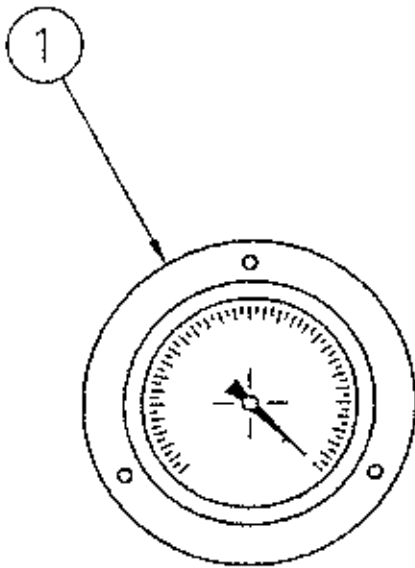
BMD105-1 INQUIRE BILL OF MATERIALS DATA Thursday April 17, 2003

Item-ID: <E2909001 >ENTR BOX, ASSY TF2000 UOM: EA
 Qty/Box: 1.00 Boxes/Pallet: 1 Input Qty: 1 EFF-Date: 04/17/2003

Component-ID	Description	Cd	Qty-Per	Ty	Seq
PP10460	CKT BKR, RKR SPST 250V 8A	CP	1.00	R	17
PP10560	CONFACTOR, 24VAC-3POLE QUICK	CP	1.00	R	16
PP10687	SCR, 6-32 X 5/16 TH PHILLIPS	FS	12.00	R	34
PP10693	SCR, 10-24 X 3/8 TH PHILLIPS	FS	7.00	R	36
PP10749	SCR, 6-32 X 5/8 RDH PHILLIPS	FS	4.00	R	35
PP10752	SCR, 10-32 X 1/2 PNH PHH ZN	FS	44.00	R	37
PP10914	BUSH, STRN PLE-CABLE DIA .17	CP	3.00	R	26
PP10925	SW, PRESSURE	CP	1.00	R	25
PP11068	RELAY, W/MTG TAB 24VDC DPDT	CP	2.00	R	20
PP11072	FLTR, AIR 19.5 X 8.5 X 1	CP	1.00	R	13
PP11074	CKT BKR, RKR DPST 250V 15A	CP	1.00	R	24
PP11091	BLOWER, 240VAC 50/60HZ VAR S	CP	1.00	R	12

ESC=EXIT F2=MAIN MENU F4=LOOKUP F7=BOM F9=REFRESH PGUP=PREV PGDN=NEXT

Approach                   



NOTES:

1. NOMINAL THREAD ENGAGEMENT FOR 1/4" THREADS IS .375"
2. USE A WIRE BRUSH TO REMOVE FOREIGN DEBRIS FROM ALL THREADS. CLEAN ALL MACHINE OIL RESIDUE FROM BOTH INTERNAL AND EXTERNAL THREADS. APPLY SILICONE RTV (PITCO P/N S2021923) TO EXTERNAL THREADS BEFORE TIGHTENING.

SEE FIGURE USE
 ONLY
 REF. DOC.

THE INFORMATION CONTAINED ON THIS DOCUMENT IS THE PROPERTY OF PITCO FRIALATOR INC. AND MAY NOT BE REPRODUCED, COPIED, OR DISSEMINATED TO THIRD PARTIES WITHOUT THE WRITTEN PERMISSION OF:

PITCO FRIALATOR INC.
 CONCORD, NH 03301 U.S.A.



PITCO FRIALATOR, INC.
 P.O. BOX 501 CONCORD, NH 03302-0501

TITLE: FILTER, GAUGE VACUUM ASSEMBLY

USED ON: TF2000

MATERIAL: SEE BOM TOLERANCES: .XXX ± .03

DWG APPROVAL DATE PART NO: B6647101

DR: BH 8/23/98 SCALE: 1/2 SH 1 OF 1

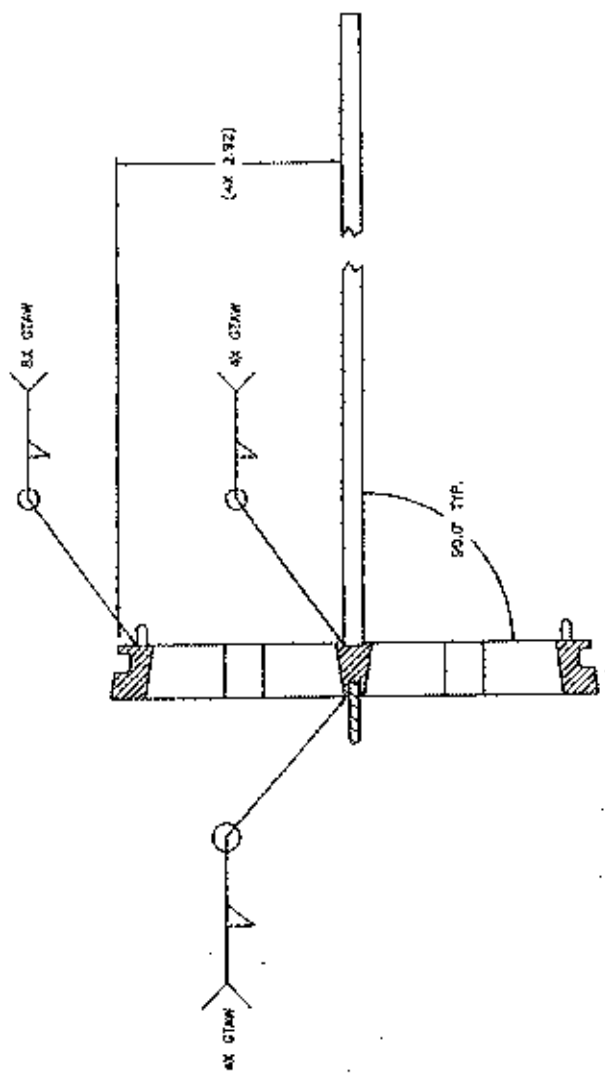
CK: S.S. 8/23/98 SIZE DWG NO: REV

EN NO: 5203 A B66-471 B

B	REV
5784	EN NO
12/20/96	DATE
R.D.K.	DR
S.S.	CK

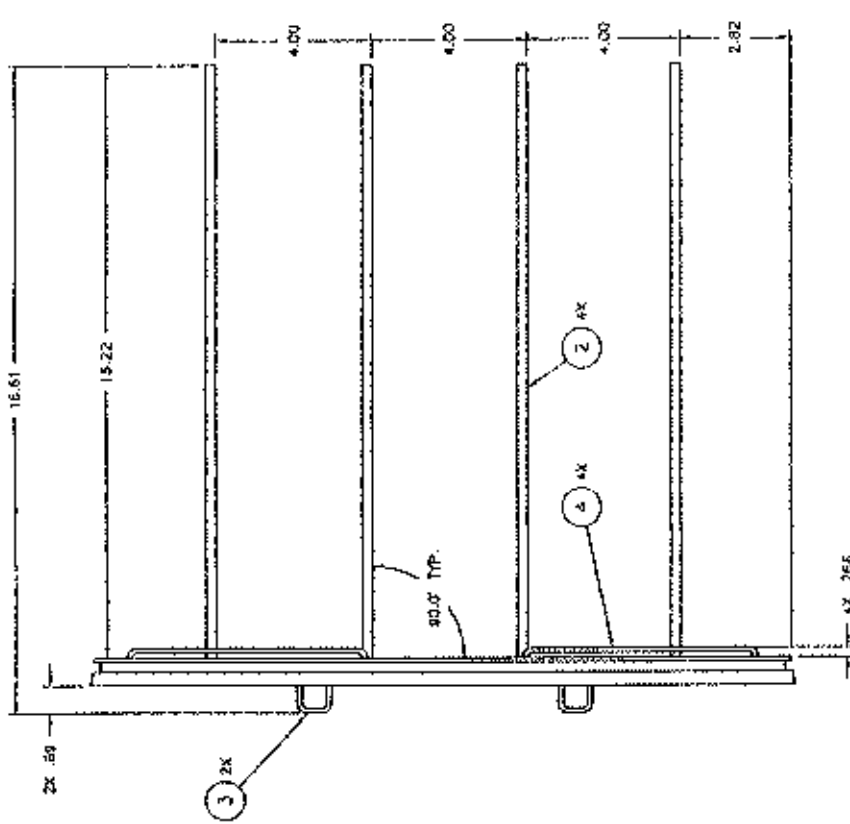
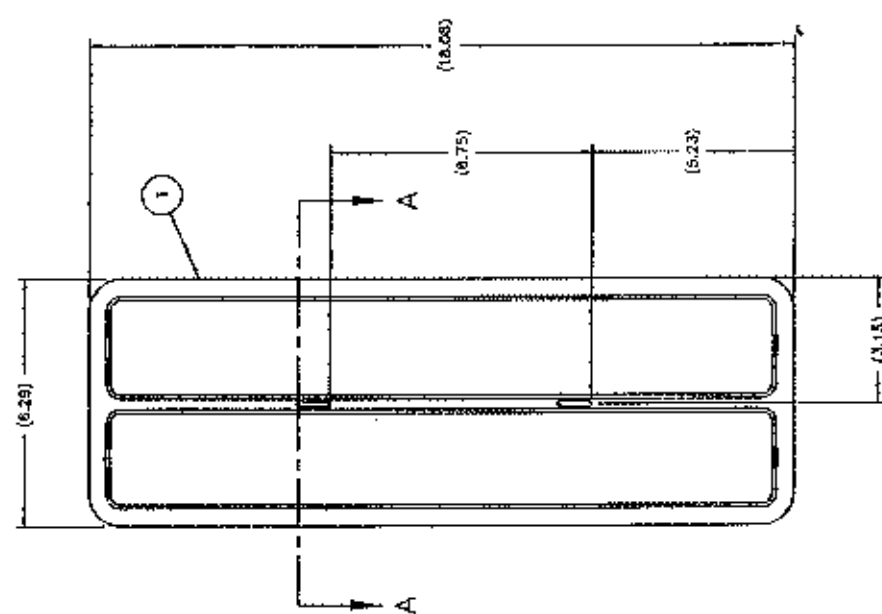
REVISIONS

SERVICE USE
ONLY
REF. DOC



SECTION A-A
SCALE 1/4"

PART NO.	8224801
SCALE	1/1
SHEET	2 OF 2
REV.	C
DATE	866-468
APP.	A



REF. DOC
ONLY
SERVICE USE

ITEM	PART NO.	DESCRIPTION	CITY
17-2000	AX 1 07	PICO FEVALATOR INC.	CHANDLER, N.C.
USED ON	AX 1 015	PICO FEVALATOR INC.	CHANDLER, N.C.
REV	ENG APPROVAL	DATE	
EN 401	EN	11/14/86	
DATE	BY	BY	
01/23/87	S.S.	W.J.M.	
CR	3/15/87	W.J.M.	
APPRO	3/15/87	W.J.M.	
REV	NEXT ASSY		
1	AX 1 07		
2	AX 1 015		
3	AX 1 015		
4	AX 1 015		
5	AX 1 015		
6	AX 1 015		
7	AX 1 015		
8	AX 1 015		
9	AX 1 015		
10	AX 1 015		
11	AX 1 015		
12	AX 1 015		
13	AX 1 015		
14	AX 1 015		
15	AX 1 015		
16	AX 1 015		
17	AX 1 015		
18	AX 1 015		
19	AX 1 015		
20	AX 1 015		
21	AX 1 015		
22	AX 1 015		
23	AX 1 015		
24	AX 1 015		
25	AX 1 015		
26	AX 1 015		
27	AX 1 015		
28	AX 1 015		
29	AX 1 015		
30	AX 1 015		
31	AX 1 015		
32	AX 1 015		
33	AX 1 015		
34	AX 1 015		
35	AX 1 015		
36	AX 1 015		
37	AX 1 015		
38	AX 1 015		
39	AX 1 015		
40	AX 1 015		
41	AX 1 015		
42	AX 1 015		
43	AX 1 015		
44	AX 1 015		
45	AX 1 015		
46	AX 1 015		
47	AX 1 015		
48	AX 1 015		
49	AX 1 015		
50	AX 1 015		
51	AX 1 015		
52	AX 1 015		
53	AX 1 015		
54	AX 1 015		
55	AX 1 015		
56	AX 1 015		
57	AX 1 015		
58	AX 1 015		
59	AX 1 015		
60	AX 1 015		
61	AX 1 015		
62	AX 1 015		
63	AX 1 015		
64	AX 1 015		
65	AX 1 015		
66	AX 1 015		
67	AX 1 015		
68	AX 1 015		
69	AX 1 015		
70	AX 1 015		
71	AX 1 015		
72	AX 1 015		
73	AX 1 015		
74	AX 1 015		
75	AX 1 015		
76	AX 1 015		
77	AX 1 015		
78	AX 1 015		
79	AX 1 015		
80	AX 1 015		
81	AX 1 015		
82	AX 1 015		
83	AX 1 015		
84	AX 1 015		
85	AX 1 015		
86	AX 1 015		
87	AX 1 015		
88	AX 1 015		
89	AX 1 015		
90	AX 1 015		
91	AX 1 015		
92	AX 1 015		
93	AX 1 015		
94	AX 1 015		
95	AX 1 015		
96	AX 1 015		
97	AX 1 015		
98	AX 1 015		
99	AX 1 015		
100	AX 1 015		

NOTES:
1. REMOVE ALL BURR MARKS AND WELD SPATTER.

DESCRIPTION: PICO FEVALATOR INC. FILTER, FITTING O-RING WELDMENT
PART NO: 28640801
SCALE: 1/2" = 1" SH 1 OF 2
C B66-468 A

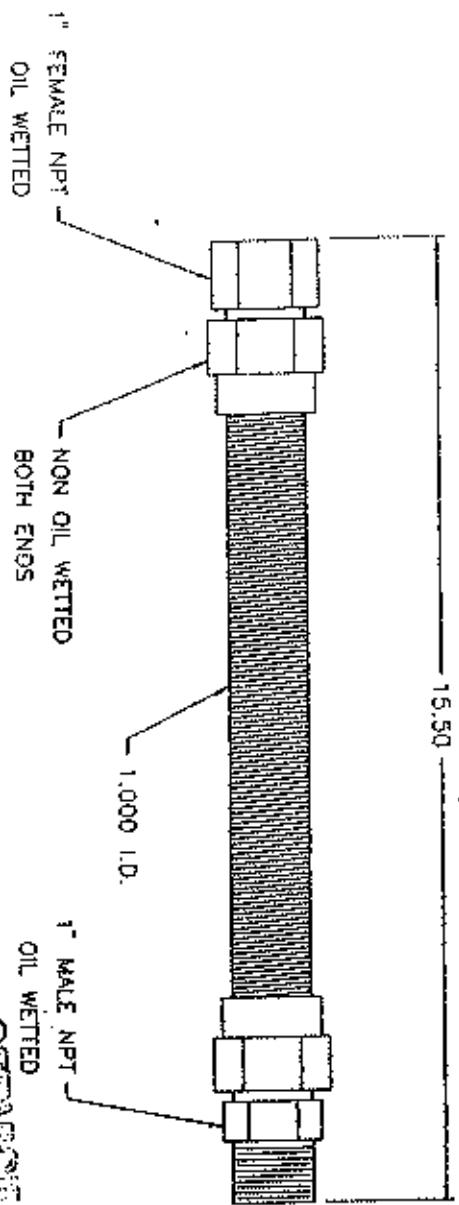
TABLE

APPROVED MANUFACTURER	MFR P/N	PITCO P/N
60-0709-13	601196	6011293

CONSUMPT MANUFACTURING CO.
 200 ENTERPRISE DRIVE
 EXETER, PA 19632
 (717) 397-8888
 (412) 733-4808

REGIFICATIONS:

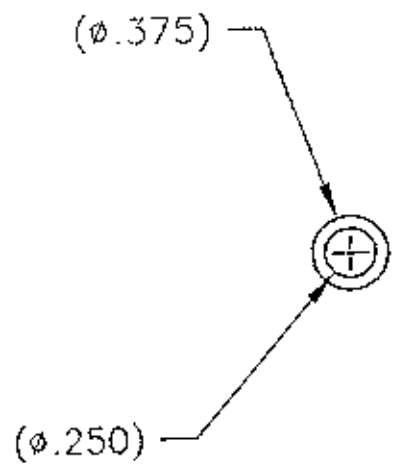
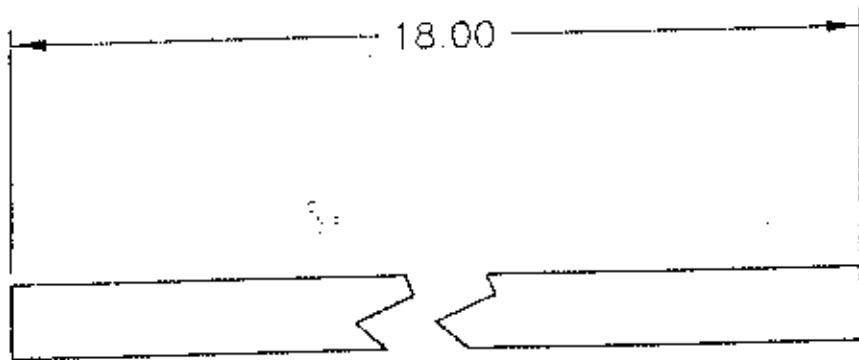
1. WORKING PRESSURE: 50 PSI
2. TEST PRESSURE: 200 PSI
3. TEMPERATURE RATING: -40°F TO 750°F
4. MATERIAL: CARBON STEEL
5. FINISH: BLACK OXIDE
6. TAGS (NON OIL WETTED):
7. MATERIAL: CARBON STEEL
8. FINISH: ZINC DIE CHROMATE
9. 1" 304 SST, .010" THK WALL
10. 7 CORRUGATIONS / INCH



SERVICE USE ONLY
REF. DOC

EN NO	DATE	BY	REV	DATE	DESCRIPTION
1	12/2000	R.D.K.	1		USED ON NEXT ASSY
2					
3					
4					
5					
6					
7					
8					
9					
10					

TUBE, FLEXIBLE WITH FITTINGS
 SCALE: 1/2" = 1"
 PART NO: 601196
 SEE TABLE
 P. 2, BOX 501 CONCORD, NH 03302-0501
 PITCO FRIALATOR, INC.
 MADE IN U.S.A.



**SERVICE USE
ONLY
REF. DOC**

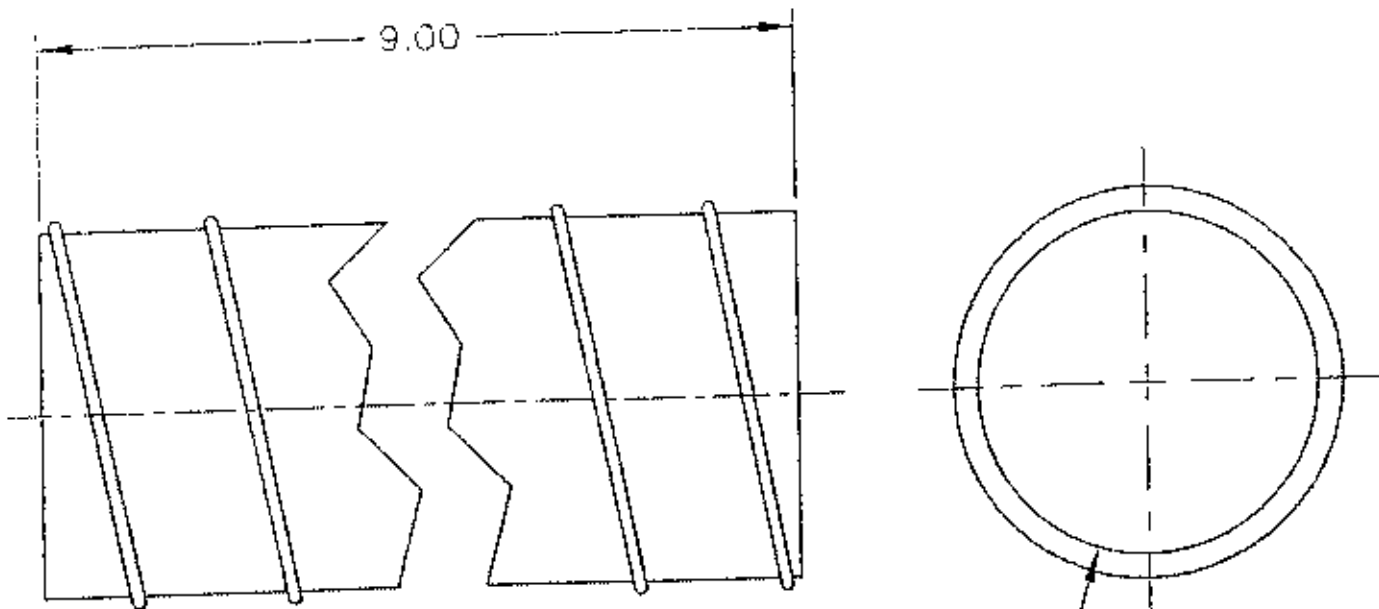
NOTES:

1. MATERIAL: TUBING, PRESSURE SWITCH, (PP10926)
2. CUT TO LENGTH AS SHOWN.

THE INFORMATION CONTAINED ON THIS DOCUMENT IS THE PROPERTY OF PITCO FRIALATOR INC. AND MAY NOT BE REPRODUCED, COPIED, OR DISSEMINATED TO THIRD PARTIES WITHOUT THE WRITTEN PERMISSION OF:
PITCO FRIALATOR INC.
CONCORD, NH 03301 U.S.A.

		PITCO FRIALATOR, INC.	
		P.O. BOX 501 CONCORD, NH 03302-0501	
TITLE: PIPING, HOSE AIR PRESSURE			
USED ON:		TF2000	
MATERIAL:		SEE NOTE 1	
TOLERANCES:		.XXX ± .06	
DWG APPROVAL		DATE	PART NO: A8024601
DR: BH	8/28/96	SCALE: 1/1 SH 1 OF 1	
CK: S.SAVAGE	8/30/96	SIZE	DWG NO:
EN NO: 5001	8/28/96		REV

B	REV	REVISIONS
5363	EN NO	
9/12/96	DATE	
C.PEPIN	DR	
BH	CK	



**SERVICE USE
ONLY
REF. DOC**

(ø 1.750)

NOTES:

1. MATERIAL: HOSE, AIR 1-3/4 I.D. (PP11081).
2. CUT TO LENGTH AS SHOWN.

THE INFORMATION CONTAINED ON THIS DOCUMENT IS THE PROPERTY OF PITCO FRIALATOR INC. AND MAY NOT BE REPRODUCED, COPIED, OR DISSEMINATED TO THIRD PARTIES WITHOUT THE WRITTEN PERMISSION OF:

PITCO FRIALATOR INC.
CONCORD, NH 03301 U.S.A.



PITCO FRIALATOR, INC.
P.O. BOX 501 CONCORD, NH 03302-0501

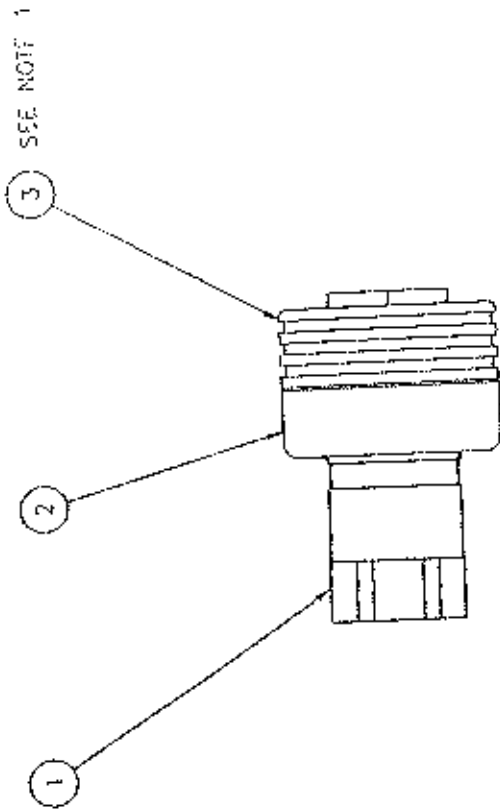
TITLE:
PIPING, HOSE BURNER AIR

USED ON: TF2000

REV	MATERIAL:	SEE NOTE 1	TOLERANCES:	.XXX ± .10
EN NO	DWG APPROVAL	DATE	PART NO:	A8024701
DATE	DR:	8H	8-26-96	SCALE: 1/1 SH 1 OF 1
DR	CK:	<i>SS</i>	<i>Almbr</i>	
CK	EN NO:	5201	8-26-96	
APPD:	APPD:	<i>SS</i>	<i>Almbr</i>	A 80-247 A

NOTES:

1. APPLY SYNCO SUPER LUBE (OR EQUIVALENT) TO THE MALE END OF ITEM 3 BEFORE MATING WITH ITEM 2.
2. PRESS ITEMS 2 AND 3 TOGETHER USING AN ARBOR PRESS (OR EQUIVALENT). DO NOT ASSEMBLE BY STRIKING ITEMS 2 AND 3 WITH HAMMER OR MALLET.



REV. 10/11
REV. 10/03

UFM'S		UNLESS OTHERWISE SPECIFIED DIMENSIONS ARE IN INCHES TOLERANCES ARE		PITCO TRIULATOR, INC. P.O. BOX 201, CONROE, TX 75834-0201	
TF2000		.XX ± .020		FILTER, DISCONNECT	
SF50A, SF65A		.XXX ± .015		ASSEMBLY INSULATED	
USED ON	NEXT ASSY	ANGLE ± .5		SCALE: 1:1	
REV	DWG APPROVAL	DATE	DIFF FROM	MATERIAL	
EN	R.D.K.	9/2/08		PITCO TRIULATOR, INC. CONROE, TX 75834-0201	
DATE	DR	9/3/08		THIS DRAWING IS THE PROPERTY OF PITCO TRIULATOR, INC. AND MAY NOT BE REPRODUCED OR TRANSMITTED IN ANY FORM OR BY ANY MEANS, WITHOUT THE WRITTEN PERMISSION OF PITCO TRIULATOR, INC.	
CK	UTM: 8365	9/2/08		DRAWN BY: [Signature]	
APPD	CS	9/3/08		PART NO: [Signature]	
				PITCO TRIULATOR, INC. 866-6001A	

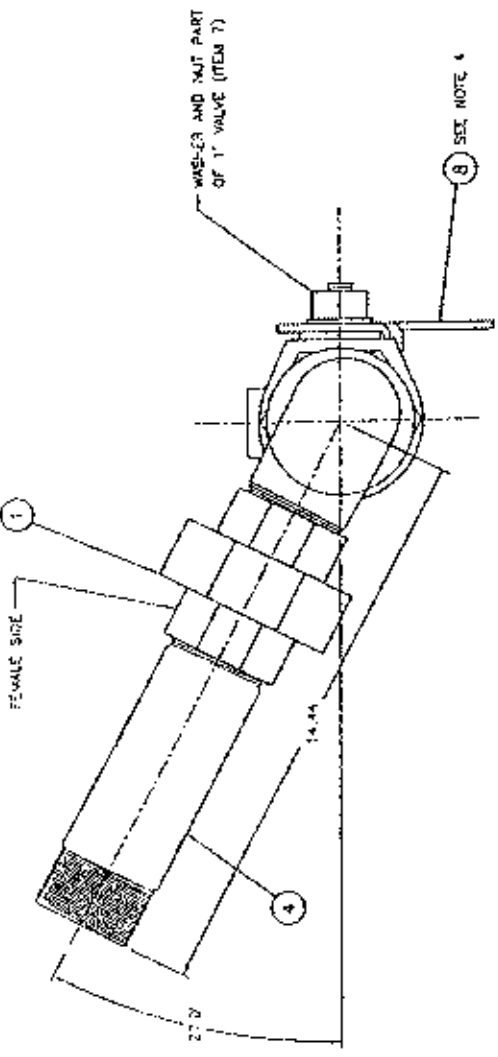
EMD105-1 INQUIRE BILL OF MATERIALS DATA Thursday April 17, 2003

Item-ID: <B8023601 >PG, DRN OUTLET ASSY TF2000 UOM: EA
 Qty/Box: 1.00 Boxes/Pallet: 1 Input Qty: 1 Eff-Date: 04/17/2003

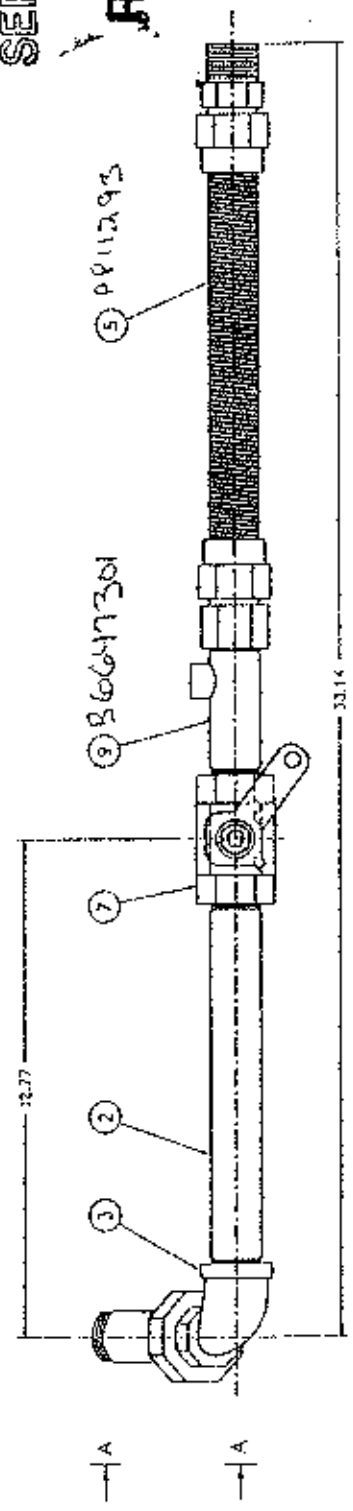
Component-ID	Description	Cd	Qty-Per	Ty	Seq
AZ502507	TK FTG, NIP DRN 1 1/4X1.75	CP	1.00	R	5
P7036951	UNION BLK 1-1/4	CP	1.00	R	3
P7037450	NIP, BLK 1-1/4 CL	CP	1.00	R	6
P7037450	NIP, PLD 1-1/4 CL	CP	1.00	R	2
P7037459	NIP, BLK 1-1/4 X 7-1/2	CP	1.00	R	1
P7037725	ELBOW, PLD 45 1-1/4	CP	2.00	R	4
P7037754	ELBOW STREET 90 1 1/4	CP	1.00	R	7

ESC=EXIT F2=MAIN MENU F4=LOOKUP F7=BOM F9=REFRESH PGUP=PREV PGDN=NEXT

SEE NOTE 1



VIEW A-A
SCALE 1:1



NOTES:

1. LEAVE CENTER NUT ON UNION HAND TIGHT.
2. MINIMUM INSIDAO ENGAGEMENT IS .686".
3. USE A WIRE BRUSH TO REMOVE FOREIGN DEBRIS FROM ALL TUBES. CLEAN ALL MACHINE OIL RESIDUE FROM BOTH INTERNAL AND EXTERNAL THREADS. SPRAY POLYURETHANE (PITCO P/N 81C71021) TO EXTERNAL TUBES BEFORE RIGHTENING.
4. REMOVE HANDLE FROM ITEM 7 AND REPLACE WITH ITEM 8 AS SHOWN.

SERVICE USE
ONLY
REF. DOC

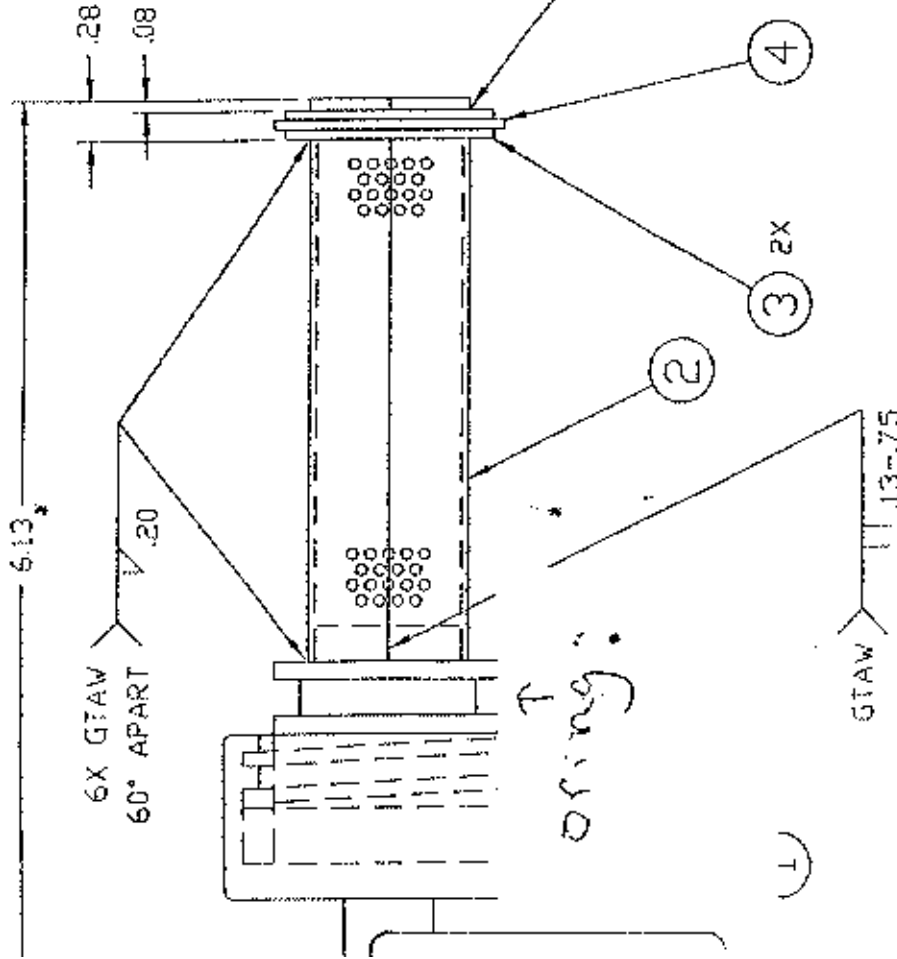
PITCO FRILATOR, INC. P.O. BOX 501 CORONA, CA 92701-0501		PART NO. 80842401		SCALE: 1/2" = 1" SH. OF 1	
REV. 2 06 REV. 1 030 ANGLE = 30		SEE 808		966-474 0	
REV. 3	REV. 4	REV. 5	REV. 6	REV. 7	REV. 8
12/17/91	1/27/92	10/28/96	DATE	BY	BY
808	808	808	DATE	BY	BY
12/17/91	1/27/92	10/28/96	DATE	BY	BY
808	808	808	DATE	BY	BY
12/17/91	1/27/92	10/28/96	DATE	BY	BY
808	808	808	DATE	BY	BY
12/17/91	1/27/92	10/28/96	DATE	BY	BY
808	808	808	DATE	BY	BY

BMDI05-1 INQUIRE BILL OF MATERIALS DATA Thursday April 17, 2003
 Item-ID: <B6647401 >FLTR,PG RET ASSY TF2000 UOM:EA
 Qty/Box: 1.00 Boxes/Pallet: 1 Input Qty: 1 Eff-Date:04/17/2003

Component-ID	Description	Cd	Qty-Per	Ty	Seq
A4018802	HDL,VIV CIRC TB TF2000	FA	1.00	R	8
B6647301	FLTR,NIP FLUSH W/LDMT TF2000	FA	1.00	R	9
P6071769	VLV,BALL 1 UNPLTD	CP	1.00	R	7
P7037393	NIP,BLK 1 X 4-1/2	CP	1.00	R	4
P7037753	ELBOW STREET 90 1	CP	1.00	R	3
PP11221	UNION,W/O BRASS SEAT (OIL O	CP	1.00	R	1
PP11243	NIP,BLK 1 X 10.5	CP	1.00	R	2
PP11293	TB,FLEX W/FTGS 1" X 15.5	CP	1.00	R	5

ESC=EXIT F2=MAIN MENU F4=LOOKUP F7=BOM F9=REFRESH PGUP=PREV PGDN=NEXT

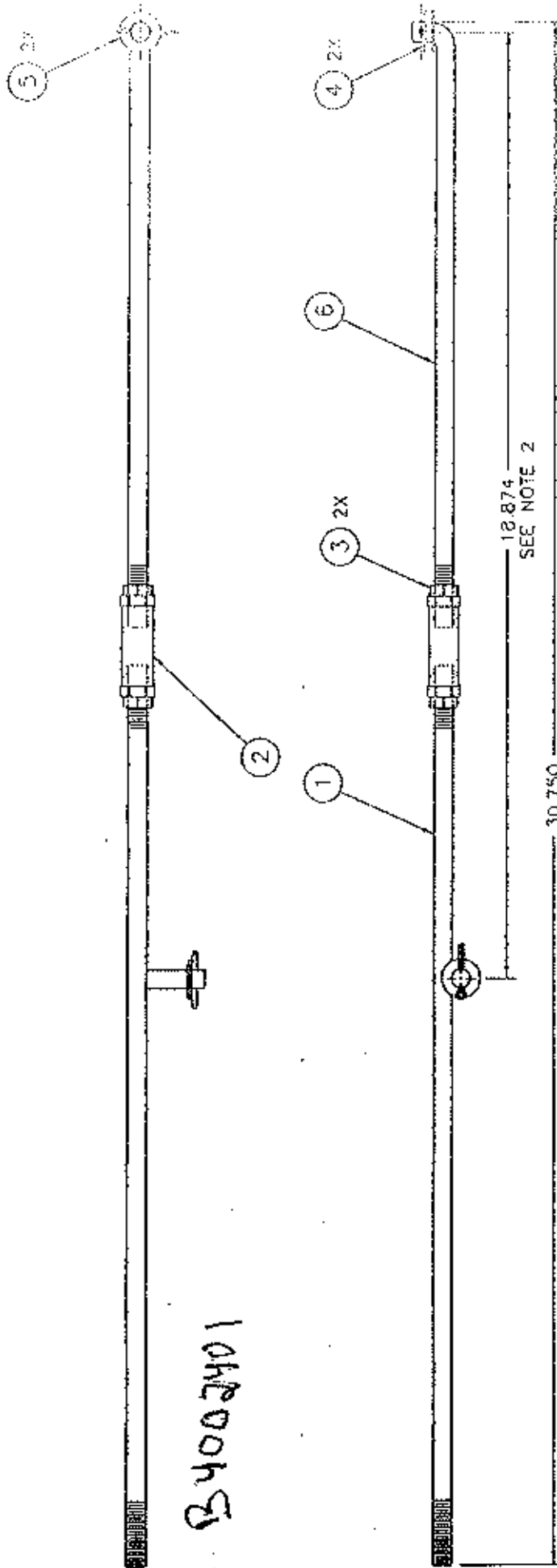
**SERVICE USE
ONLY
REF. DOC**



MOVE ALL BURN THRU ON INSIDE
PERFORATED TUBE.
O-RING WASHER MUST MOVE FREELY.

ITEM	PART NO.	DESCRIPTION
		PITCO FRIALATOR P.O. BOX 501 CONCORD, NH 03302
		THE INFORMATION CONTAINED ON THIS DOCUMENT IS THE PROPERTY OF PITCO FRIALATOR INC. AND MAY NOT BE REPRODUCED OR COPIED OR DISSEMINATED IN ANY MANNER WITHOUT THE WRITTEN PERMISSION OF PITCO FRIALATOR INC. CONCORD, NH 03301 U.S.A.
		SCALE: 1/1 SH 1 C
		PART NO: B6646601
		SIZE: B66-466
		FINISH: SEE BOM
		DATE: 8-16-98
		DR: S.S.
		CK: S.S.
		APPD: S.S.
		USED ON: NEXT ASSY
		DATE: 8-16-98
		BY: S.S.
		CHK: S.S.
		APP: S.S.
		TF2000
		UNLESS OTHERWISE SPECIFIED DIMENSIONS ARE IN INCHES TOLERANCES ARE:
		.XX ± .02
		.XXX ± .015
		ANGLE ± .5°

**SERVICE USE
ONLY
REF. DOC**



SECRETARY GENERAL
 ONLY
 REF. DOC

- NOTES:
1. FINAL ADJUSTMENT IS TO BE MADE AFTER BEING INSTALLED INTO UNIT.
 2. INSTALLATION: CENTER TO CENTER DISTANCE SHOULD BE ADJUSTED TO MATCH ACTUAL CENTER TO CENTER DISTANCE OF VALVE STEM CENTER LINES.
 3. WHEN ONE VALVE IS OPEN THE OTHER VALVE SHOULD BE CLOSED.

PITCO
FRULATOR

PITCO FRULATOR, INC.
 P.O. BOX 581 CONCORD, NH 03302-0581

HANDLE, ROD FLUSH VALVE ASSEMBLY

PART NO 34002501
 SCALE: 1/2 SH 1 OF 1

THE INFORMATION CONTAINED IN THIS DOCUMENT IS THE PROPERTY OF PITCO FRULATOR, INC. AND IS TO BE USED ONLY AS AUTHORIZED BY THE COMPANY WITHOUT THE WRITTEN PERMISSION OF THE COMPANY.

REV	NO	DATE	BY	APPR	DATE
1	1	1/10/97	R.D.K.		
2	1	2/21/97	S.S.		
3	1	1/10/97	S.S.		

UNLESS OTHERWISE SPECIFIED DIMENSIONS ARE IN INCHES UNLESS NOTED OTHERWISE

TF2000
 .XX ± .020
 .XXX ± .015
 ANGLE ± .5

SEE 80M

USED ON NEXT ASSY

C	B	REV	NO	DATE	BY	APPR
5844	5082	1	1	1/10/97	R.D.K.	
9/3/97	4/7/97	2	1	2/21/97	S.S.	
R.D.K.	R.D.K.	DR	DR	1/10/97	S.S.	

BMDI05-1 INQUIRE BILL OF MATERIALS DATA Thursday April 17, 2003

Item-ID: <B4002501 >HDL, ROD FLV ASSY TF2000 UOM:EA
Qty/Box: 1.00 Boxes/Pallet: 1 Input Qty: 1 EFF-Date:04/17/2003

Component-ID	Description	Cd	Qty-Per	Ty	Seq
B4003601	HDL, NEST FL VLV ROD TF2000	FA	1.00	R	1
P0080850	WSHR, FLAT 3/8 .805-.827OD Z	FS	2.00	R	4
P0095200	NUT, HEX (JAM) 3/8-16 SS	FS	1.00	R	3
P0190300	PIN, COTTER 3/32 X 3/4	FS	2.00	R	5

ESC=EXIT F2=MAIN MENU F4=LOOKUP F7=BOM F9=REFRESH PGUP=PREV PGDN=NEXT

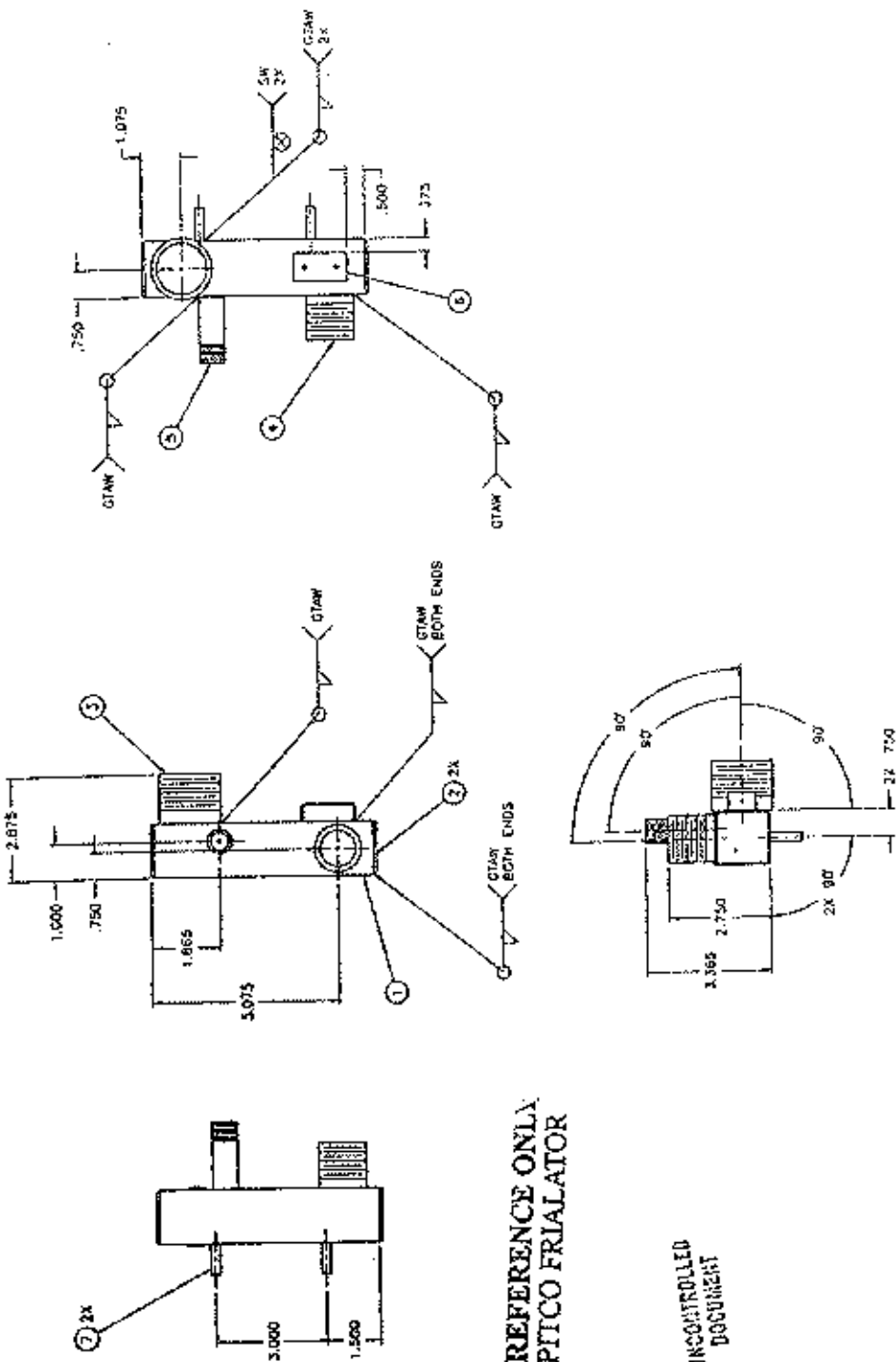
Approach

MASTER MENU

Warranty Un

Lookup

B6647001-C
 LS Assembly

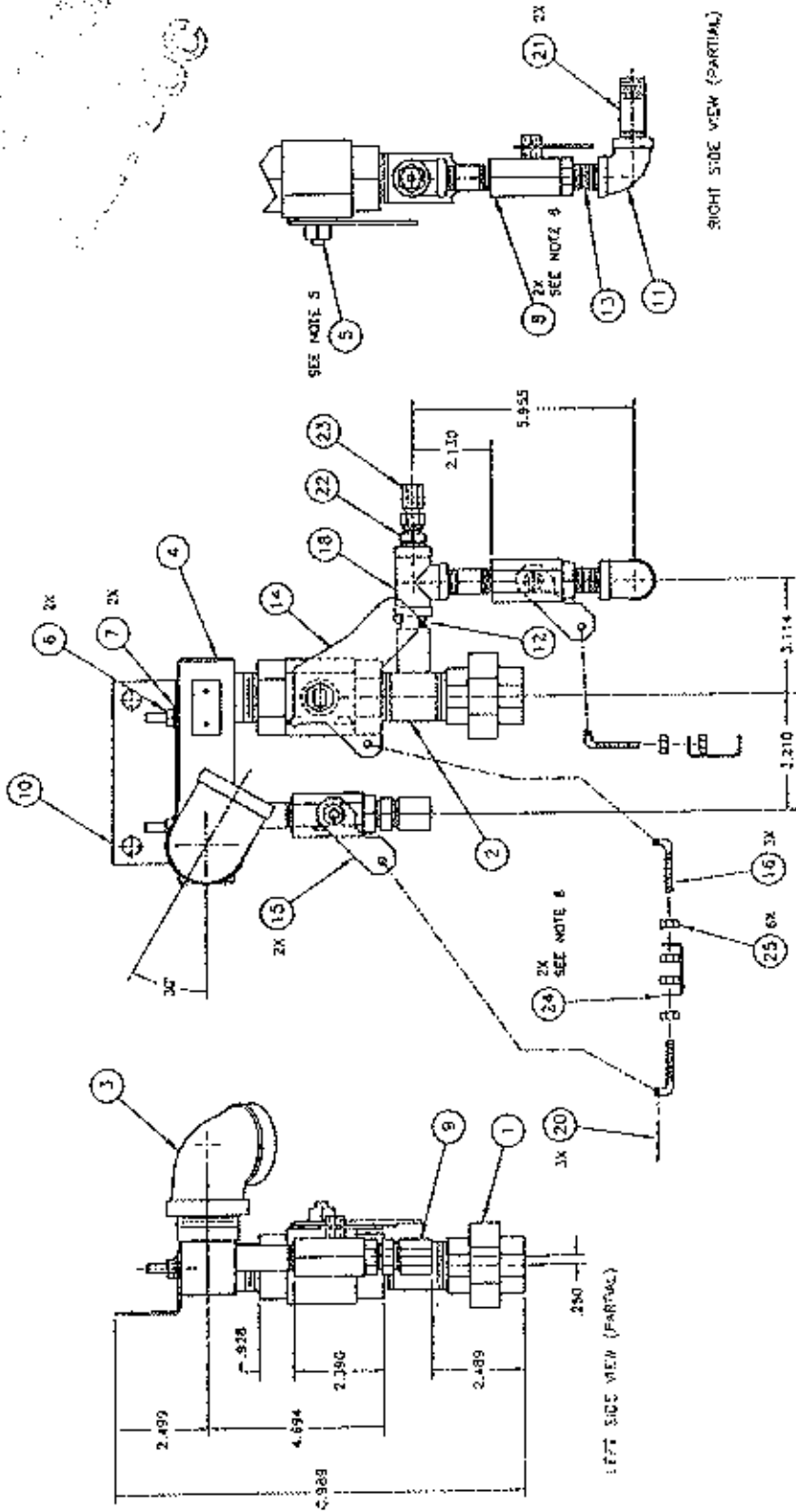


REFERENCE ONLY
 PITCO FRIALATOR

UNCONTROLLED
 DOCUMENT

- NOTES:
1. REMOVE ALL WELD SPATTER AND BURR MARKS
 2. ITEM 7 IS TO BE WELDED TO ITEM 1 PRIOR TO THE WELDING OF ITEMS 2 THRU 8
 3. ALL WELDS ARE TO BE LEAK TIGHT.
 4. ITEMS 3 THRU 5 ARE TO BE CENTERED ON THEIR CORRESPONDING HOLES OF ITEM 1

PITCO FRIALATOR		PITCO FRIALATOR	
FRIALATOR		FRIALATOR	
REV	DATE	REV	DATE
1	11/18/60	1	11/18/60
2	11/18/60	2	11/18/60
3	11/18/60	3	11/18/60
4	11/18/60	4	11/18/60
5	11/18/60	5	11/18/60
6	11/18/60	6	11/18/60
7	11/18/60	7	11/18/60
8	11/18/60	8	11/18/60
9	11/18/60	9	11/18/60
10	11/18/60	10	11/18/60
11	11/18/60	11	11/18/60
12	11/18/60	12	11/18/60
13	11/18/60	13	11/18/60
14	11/18/60	14	11/18/60
15	11/18/60	15	11/18/60
16	11/18/60	16	11/18/60
17	11/18/60	17	11/18/60
18	11/18/60	18	11/18/60
19	11/18/60	19	11/18/60
20	11/18/60	20	11/18/60
21	11/18/60	21	11/18/60
22	11/18/60	22	11/18/60
23	11/18/60	23	11/18/60
24	11/18/60	24	11/18/60
25	11/18/60	25	11/18/60
26	11/18/60	26	11/18/60
27	11/18/60	27	11/18/60
28	11/18/60	28	11/18/60
29	11/18/60	29	11/18/60
30	11/18/60	30	11/18/60
31	11/18/60	31	11/18/60
32	11/18/60	32	11/18/60
33	11/18/60	33	11/18/60
34	11/18/60	34	11/18/60
35	11/18/60	35	11/18/60
36	11/18/60	36	11/18/60
37	11/18/60	37	11/18/60
38	11/18/60	38	11/18/60
39	11/18/60	39	11/18/60
40	11/18/60	40	11/18/60
41	11/18/60	41	11/18/60
42	11/18/60	42	11/18/60
43	11/18/60	43	11/18/60
44	11/18/60	44	11/18/60
45	11/18/60	45	11/18/60
46	11/18/60	46	11/18/60
47	11/18/60	47	11/18/60
48	11/18/60	48	11/18/60
49	11/18/60	49	11/18/60
50	11/18/60	50	11/18/60
51	11/18/60	51	11/18/60
52	11/18/60	52	11/18/60
53	11/18/60	53	11/18/60
54	11/18/60	54	11/18/60
55	11/18/60	55	11/18/60
56	11/18/60	56	11/18/60
57	11/18/60	57	11/18/60
58	11/18/60	58	11/18/60
59	11/18/60	59	11/18/60
60	11/18/60	60	11/18/60
61	11/18/60	61	11/18/60
62	11/18/60	62	11/18/60
63	11/18/60	63	11/18/60
64	11/18/60	64	11/18/60
65	11/18/60	65	11/18/60
66	11/18/60	66	11/18/60
67	11/18/60	67	11/18/60
68	11/18/60	68	11/18/60
69	11/18/60	69	11/18/60
70	11/18/60	70	11/18/60
71	11/18/60	71	11/18/60
72	11/18/60	72	11/18/60
73	11/18/60	73	11/18/60
74	11/18/60	74	11/18/60
75	11/18/60	75	11/18/60
76	11/18/60	76	11/18/60
77	11/18/60	77	11/18/60
78	11/18/60	78	11/18/60
79	11/18/60	79	11/18/60
80	11/18/60	80	11/18/60
81	11/18/60	81	11/18/60
82	11/18/60	82	11/18/60
83	11/18/60	83	11/18/60
84	11/18/60	84	11/18/60
85	11/18/60	85	11/18/60
86	11/18/60	86	11/18/60
87	11/18/60	87	11/18/60
88	11/18/60	88	11/18/60
89	11/18/60	89	11/18/60
90	11/18/60	90	11/18/60
91	11/18/60	91	11/18/60
92	11/18/60	92	11/18/60
93	11/18/60	93	11/18/60
94	11/18/60	94	11/18/60
95	11/18/60	95	11/18/60
96	11/18/60	96	11/18/60
97	11/18/60	97	11/18/60
98	11/18/60	98	11/18/60
99	11/18/60	99	11/18/60
100	11/18/60	100	11/18/60



RIGHT SIDE VIEW (PARTIAL)

LEFT SIDE VIEW (PARTIAL)

NOTES:

1. ALL DIMENSIONS ARE REFERENCE DIMENSIONS.
2. NOMINAL THREAD ENGAGEMENT ON 1" THREADS IS 3/8".
3. NOMINAL THREAD ENGAGEMENT ON 3/8" THREADS IS 3/8".
4. USE A WIRE BRUSH TO REMOVE FOREIGN DEBRIS FROM ALL THREADS. CLEAN ALL MACHINE OIL RESIDUE FROM BOTH INTERNAL AND EXTERNAL THREADS. APPLY SILICONE RTV (PITCO P/N 52014823) TO EXTERNAL THREAS BEFORE TIGHTENING.
5. REMOVE NUT FROM 1" VALVE AND INSTALL ITEM 14 AS SHOWN.
6. ADJUST NUTS FROM BOTH 3/8" VALVES AND INSTALL ITEM 15 AS SHOWN.
7. ADJUST SPRINGS SO THAT ONE VALVE IS FULLY CLOSED AND THE OTHER IS IN OPEN POSITION (TEST VALVE OPERATING).

ITEM	PART NO.	DESCRIPTION	QTY
1	06	PITCO FRIALATOR, INC.	
2	06	SEE NOTE 5	
3	06	SEE NOTE 5	
4	06	SEE NOTE 5	
5	06	SEE NOTE 5	
6	06	SEE NOTE 5	
7	06	SEE NOTE 5	
8	06	SEE NOTE 5	
9	06	SEE NOTE 5	
10	06	SEE NOTE 5	
11	06	SEE NOTE 5	
12	06	SEE NOTE 5	
13	06	SEE NOTE 5	
14	06	SEE NOTE 5	
15	06	SEE NOTE 5	
16	06	SEE NOTE 5	
17	06	SEE NOTE 5	
18	06	SEE NOTE 5	
19	06	SEE NOTE 5	
20	06	SEE NOTE 5	
21	06	SEE NOTE 5	
22	06	SEE NOTE 5	
23	06	SEE NOTE 5	
24	06	SEE NOTE 5	
25	06	SEE NOTE 5	

FILTER, PIPING SUMP
 PART NO. B66-470
 SCALE: 1/2" = 1"
 SHEET 1 OF 1
 B66-470

BMDI05-1 INQUIRE BILL OF MATERIALS DATA Thursday April 17, 2003 UOM:EA
 Item-ID:<B6647001 >FLTR,PG SUMP TF2000
 Qty/Box: 1.00 Boxes/Pallet: 1 Input Qty: 1 Eff-Date:04/17/2003

Component-ID	Description	Cd	Qty-Per	Ty	Seq
A4018102	HDL,VLV PICK-UP TF2000	FA	2.00	R	15
A4018202	HDL,VLV SUMP TF2000	FA	1.00	R	14
A4018501	HDL,ROD VLV PICK-UP TF2000	CP	3.00	R	16
A4019901	HDL,BRKT ADJUST TF2000	FA	2.00	R	24
A7013001	FLTR,PG MANG BRKT TF2000	FA	1.00	R	10
B6663101	FLTR,NEST SUMP WELD TF2000	FA	1.00	R	2
P0080650	WSHR,FLAT 1/4 ZN SAE	FS	2.00	R	7
P0093300	NUT,HEX (KEP) 1/4-20 ZN	FS	2.00	R	6
P0190200	PIN COTTER 1/16X3/4 ZN	FS	3.00	R	20
P6071769	VLV,BALL 1 UNPLTD	CP	1.00	R	5
P6071780	VLV,BALL 3/8 W/RED HDL	CP	2.00	R	8
P7036854	TEE BLK 3/8	CP	1.00	R	18

ESC=EXIT F2=MAIN MENU F4=LOOKUP F7=BOM F9=REFRESH PGUP=PREV PGDN=NEXT



BMDI05-1 INQUIRE BILL OF MATERIALS DATA Thursday April 17, 2003

Item ID: <B6647001

UOM: EA

>FLTR, PG SUMP TF2000

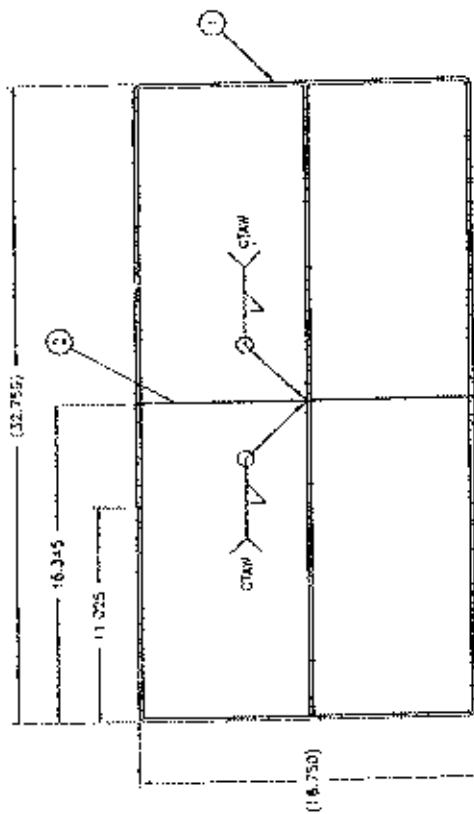
Qty/Box: 1.00 Boxes/Pallet: 1 Input Qty: _

Eff-Date: 04/17/2003

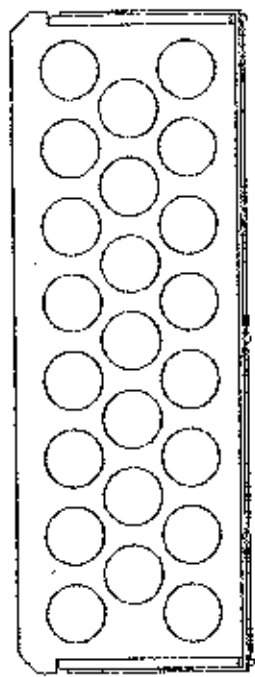
Component-ID	Description	Cd	Qty	Per	Ty	Seq
P7037300	NIP, BLK 3/8 SP	CP	1.00	R		13
P7037301	NIP, BLK 3/8 CL	CP	1.00	R		12
P7037304	NIP, BLK 3/8 X 2	CP	2.00	R		21
P7037675	ELB, BLK 90 3/8	CP	1.00	R		11
P7037690	ELB, BLK 90 1 1/4	CP	1.00	R		3
P7037796	FTG, CPRSN CS STR 1/2 TB X 3	CP	1.00	R		9
PP10176	NUT, CENTERLOCK 10-24	FS	6.00	R		25
PP10916	FTG, CPRSN CR TEMP PROBE	CP	1.00	R		23
PP11069	BSHG, RDCR HEX 3/8X1/4 NPT B	CP	1.00	R		22
PP11221	UNION, W/O BRASS SEAT (OIL O	CP	1.00	R		1

ESC-EXIT F2=MAIN MENU F4=LOOKUP F7=BOM F9=REFRESH PGUP=PREV PGDN=NEXT



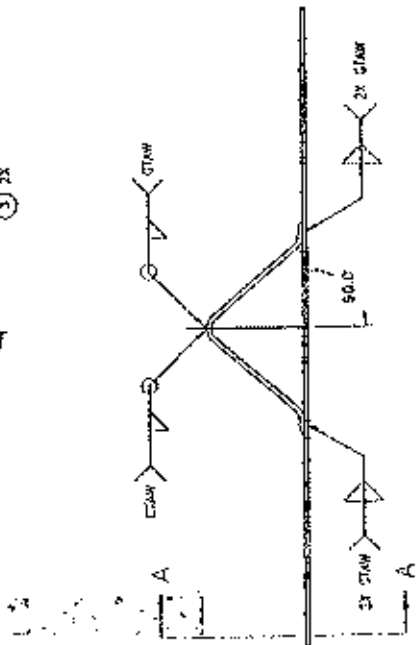


1
2
TOP CLADITY TUBES ARE REMOVED FROM RACK.



SECTION A-A
SCALE 3/1

GENESEE USE ONLY
REF. DOC



- NOTES:
1. REMOVE ALL BURRS AND SHARP EDGES.
 2. PARTS TO BE FREE OF BURR AND SPATTER MARKS.

PITCHCO FRIGIDATOR, INC. 400 S. 10th St. Grand Rapids, MI 49504-1001		PART NO: 35004001 SCALE: 3/4 5/8 1 1 1/2	
ACCESSORIES, TANK CINDER WELDMENT		SEE BDM	
DESIGNED BY: [Signature] CHECKED BY: [Signature]	DATE: 5/5/82	DRAWN BY: [Signature]	DATE: 5/5/82
USED IN: [Blank]	APPROVAL: [Signature]	DATE: 5/5/82	BY: [Signature]
GENESEE		350-040	

EMDI05-1 INQUIRE BILL OF MATERIALS DATA Thursday April 17, 2003
 Item-ID: <B8020401 >PG, SPLY GAS NAT TF2000 UOM:EA
 Qty/Box: 1.00 Boxes/Pallet: 1 Input Qty: 1 Eff-Date: 04/17/2003

Component-ID	Description	Cd	Qty-Per	Ty	Seq
A8001101	PG, FTG BNR 7, 12, 12D, 14, 14C,	CP	1.00	R	29
A8002601	PG, FTG CPRSN ORF TF2000	CP	1.00	R	23
A8002721	PG, ORF #54 NAT/LP TF2000	CP	1.00	R	24
A8018805	PG, ORIFICE .359 NAT TF2000	CP	1.00	R	21
A8019103	PG, BRKT PIPE SPRT FR TF2000	FA	1.00	R	12
A8023401	PG, TBG LOW FIRE TF2000	CP	1.00	R	25
B8020601	PG, CPLG WLDMT TF2000	FA	1.00	R	1
P6071345	ORIFICE #45	FS	1.00	R	22
P7036860	TEE BLK 3/4	CP	2.00	R	13
P7036906	UNION BLK 1 INCH	CP	1.00	R	5
F7036970	SOCKET, REDUCER 1 X 3/4	CP	1.00	R	7
P7037048	NIP, BLK 1/4 CL	CP	1.00	R	15

ESC=EXIT F2=MAIN MENU F4=LOOKUP F7=BOM F9=REFRESH PGUP=PREV PGDN=NEXT

BMDI05-1 INQUIRE BILL OF MATERIALS DATA Thursday April 17, 2003

Item-ID: <B8020401

Qty/Box: 1.00 Boxes/Pallet: 1 Input Qty: 1

>PG, SPLY GAS NAT TF2000 UOM:EA

Eff-Date: 04/17/2003

Component-ID	Description	Cd	Qty-Per	Ty	Seq
P7037053	NIP, BLK 1/4 X 3	CP	1.00	R	31
P7037350	NIP, BLK 3/4 CL	CP	3.00	R	10
P7037355	NIP, BLK 3/4 X 2	CP	2.00	R	8
P7037356	NIP, BLK 3/4 X 2-1/2	CP	2.00	R	30
P7037358	NIP, BLK 3/4 X 3-1/2	CP	1.00	R	20
P7037396	NIP, BLK 1 X 2	CP	1.00	R	4
P7037404	NIP, BLK 1 X 6	CP	1.00	R	6
P7037408	NIP, BLK 1 X 9	CP	1.00	R	2
P9037679	ELBOW BLK 90 3/4	CP	2.00	R	11
PP10381	TEE, BLK 1/4	CP	1.00	R	28
PP10761	FTG, BRS 5/16 OD X .25 NPT C	CP	2.00	R	26
PP11070	BSHG, RDCR HEX 3/4X1/4 NPT B	CP	4.00	R	14

ESC-EXIT F2=MAIN MENU F4=LOOKUP F7=EOM F9=REFRESH PGUP=PREV PGDN=NEXT

Approach

MASTER MENU

Warranty Link

Lookup



BMDI05-1 INQUIRE BILL OF MATERIALS DATA Thursday April 17, 2003

Item-ID:<B8020401 >PG, SPLY GAS NAT TF2000 UOM:EA
Qty/Box: 1.00 Boxes/Pallet: 1 Input Qty: 1 Eff-Date:04/17/2003

Component-ID	Description	Cd	Qty-Per	Ty	Seq
PP11071	BSHG, RDCR HEX 1/4X1/8 NPT B	CP	1.00	R	19
PP11083	MIP, BLK 1/8 X 2	CP	1.00	R	27
PP11092	VLV, GAS 1 24V 60HZ	CP	1.00	R	3
PP11093	VLV, GAS PRESS RGLTR 3/4	CP	1.00	R	17
PP11094	VLV, GAS POPPET 1/4	CP	1.00	R	16
PP11095	VLV, MANUAL SHUT-OFF 3/4	CP	1.00	R	9
PP11232	VLV, GAS 3/4 24V 60HZ	CP	2.00	R	18
PP11233	ELB, BLK 90 STR 1/4	CP	2.00	R	32

ESC=EXIT F2=MAIN MENU F4=LOOKUP F7=BOM F9=REFRESH PGUP=PREV PGDN=NEXT

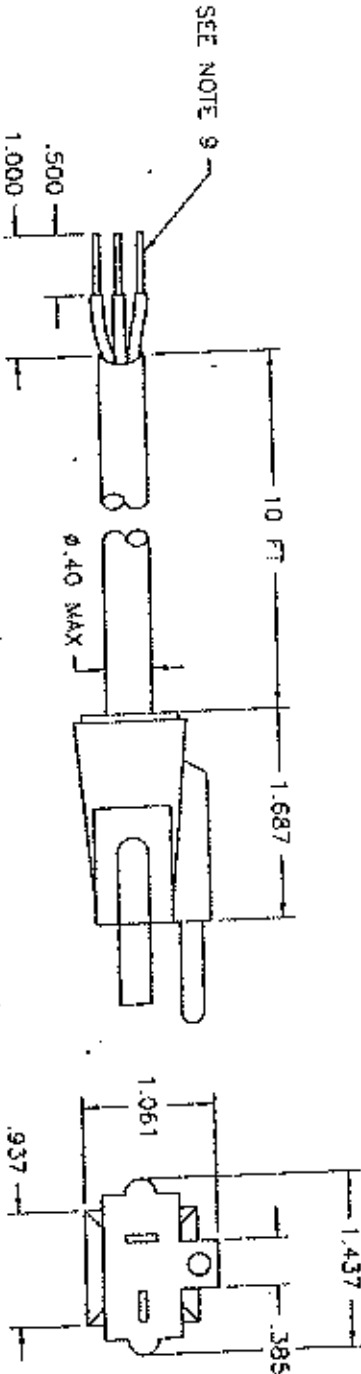


TABLE

APPROVED SUPPLIER:	MFR P/N	PITCO P/N
BERGQUIST	PP11334	PP11334

BERGQUIST
7705 BUSH LAKE RD.
EDINA, MN 55439
TEL: (612) 820-6570
FAX: (612) 835-5080
UL FILE # E40349
CSA FILE # LR24118

ELECTRI-CORD
312 EAST MAIN ST.
WESTFIELD, PENN. 16950
TEL: (814) 367-2265
FAX: (814) 367-2314
UL FILE # E18951
CSA FILE # LR14017



SERVICE USE ONLY

REF. DOC

SPECIFICATIONS:

1. PLUG: NEMA 6-20P
2. PLUG RATING: 20A 250V
3. TEMPERATURE RATING: 221°F (105°C)
4. CORD MATERIAL: 14 AWG, 3 CONDUCTOR, TYPE SJTO
5. DIELECTRIC VOLTAGE WITHSTAND: 1200 VAC-RMS, CORD: 300 VAC-RMS
6. CURRENT RATING: 18 AMPS-TWO CONDUCTORS CURRENT CARRYING
7. COLORS: CONDUCTERS: BLACK, WHITE, GREEN, CORD & PLUG: BLACK
8. CORD MARKED TO INDICATE COMPLIANCE WITH ITEMS 3 & 4 ABOVE.
9. CONDUCTOR ENDS ARE TO BE TINNED.

SPEC CONTROL DWG

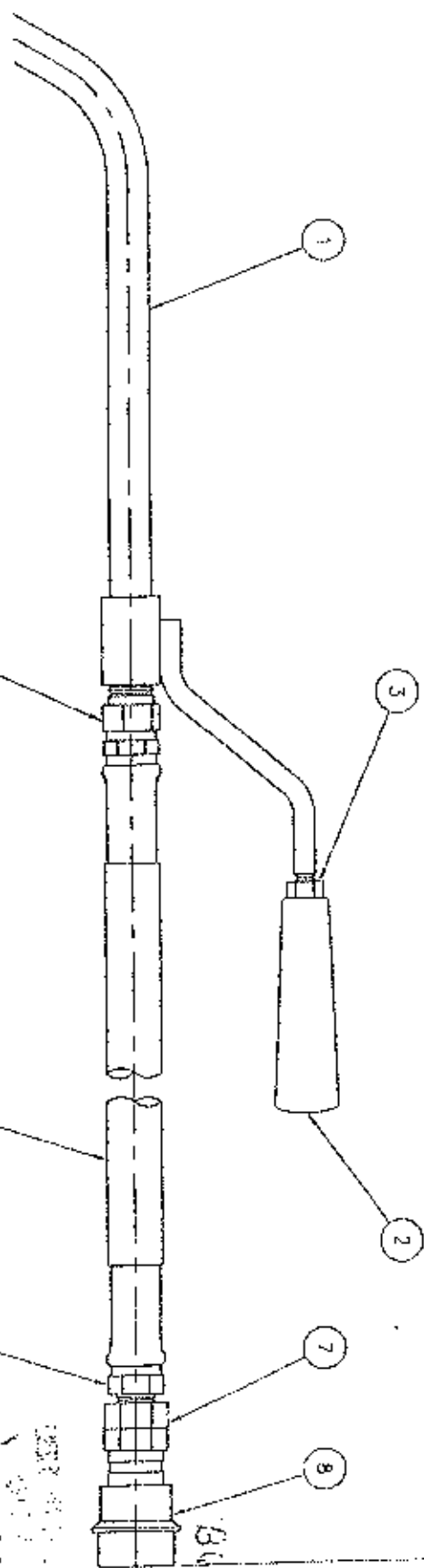
USED ON TF2000		DWG APPROVAL S.S.		NEXT ASSY S.S.		DATE 10/29/91		SEE SPECIFICATIONS	
REV	EN NO	DATE	R.D.K.	DATE	DATE	SEE SPECIFICATIONS			
7681	EN	4/1/98	R.D.K.	10/29/91	10/29/91	SEE SPECIFICATIONS			
R.D.K.	DR		S.S.	10/16/91	10/16/91	SEE SPECIFICATIONS			
S.S.	CK		S.S.	10/23/91	10/23/91	SEE SPECIFICATIONS			
S.S.	APPD		S.S.			SEE SPECIFICATIONS			

PITCO FRILATOR, INC.
P.O. BOX 501
CONCORD, NH 03302-0501

CORD, PLUG MOLDED
14-3 AWG NEMA 6-20P

PART NO:	SEE TABLE
SCALE:	1/1
SH 1 OF 1	
601223	B.

50.00 REF



5 SEE NOTE 3

4

5 SEE NOTE 2

EQUIRED
EQUIRED

PART NO.	DESCRIPTION
66623201	FLTR. HOSE/NOZ OUTLET UFM
96623201-C	FLTR. HOSE/NOZ OUTLET UFM SERVICE ONLY

TABLE

Component-ID	Description	Qty-Per 1y
A6685501	FLTR, INSULN BOT SF50, 65	1.00 R
B6604401	FLTR, NOZ RIN W/DHT #14-34, B	1.00 R
P0095200	RUT, HEX (JAH) 3/8-16 SS	1.00 R
PP10556	FITTING, SQUARE 1/2 NS X 3/8	1.00 R
PP10557	FITTING, SWG SWVL 1/2 NS X 1/2	1.00 R
PP10740	CONN, COUP-VALVED PUSH-3/8	1.00 R
PP10796	HDL, PLASTIC 3/8-16 X 3/4 IE	1.00 R
PP10952	HOSE, OIL .5 ID X .97 OD 325 FS	5.00 R

Item-ID: <B6623201
 Qty/Box: 1.00 Boxes/Pallet: 1 Input Qty: 1 Eff-Date: 05/14/1
 UOM
 >FLTR, HOSE/NOZ OUT UFM
 Thursday May 14, 1998
 INQUIRE BILL OF MATERIALS DATA

REV	EN NO	DATE	DWG APPROVAL	DATE	DATE	SEE BOM
B	1789	21/97		4/23/93		
D.K.	DR	DATE	S.S.	4/29/93		
S.S.	CK	DATE	S.S.	4/23/93		
S.S.	APPD	DATE	S.S.	4/29/93		

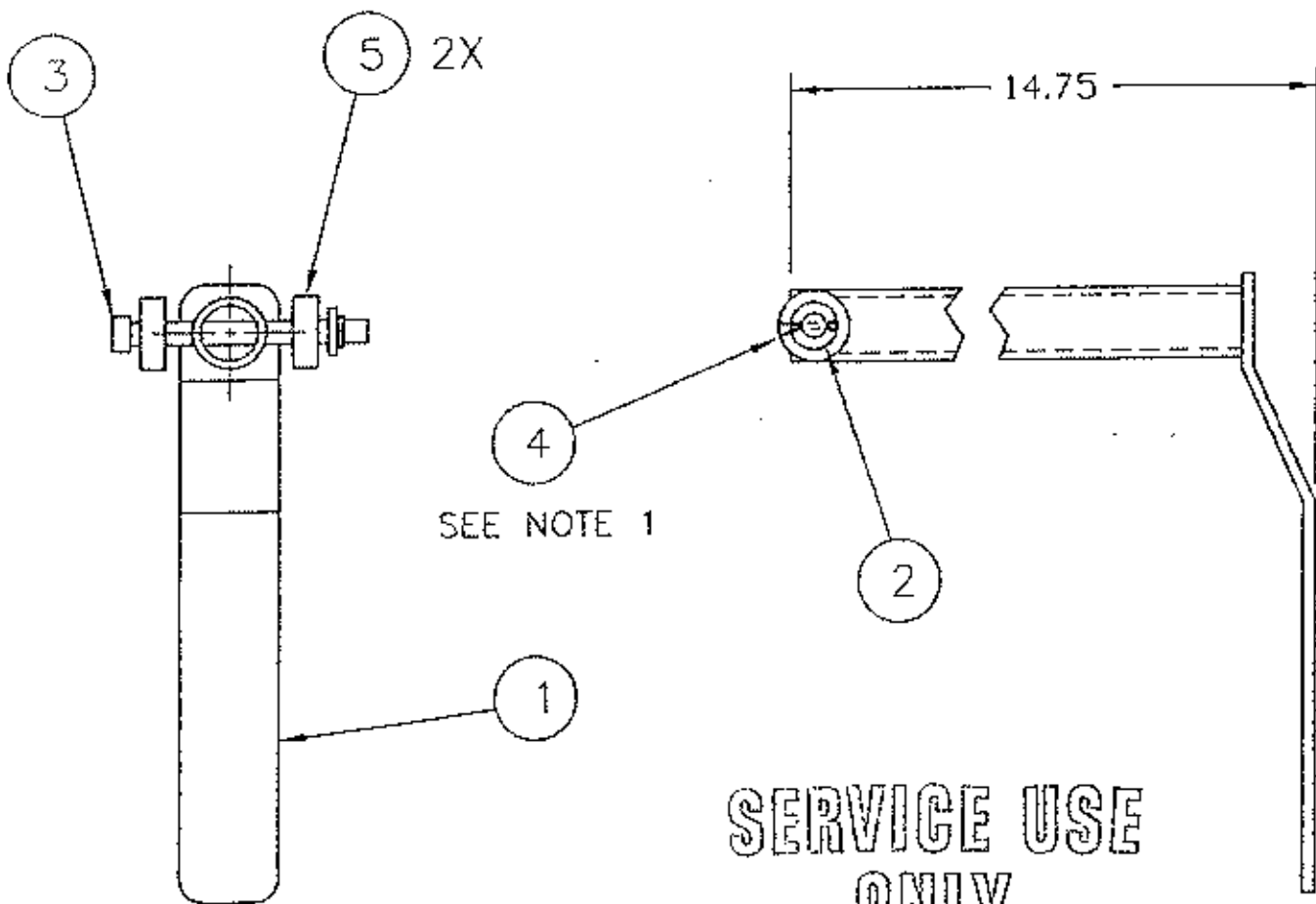
INCLUDE DIMENSIONS SPECIFIC DIMENSIONS
 AND IN WORDS EXCEPTS SEE
 .XX ± .020
 .XXX ± .015
 ANGLE ± .5°

PITCO FRIALATOR, INC.
 P.O. BOX 501 CONCORD, NH 03302-0501

THE INFORMATION CONTAINED
 HEREIN IS UNCLASSIFIED
 DATE 11/19/01 BY 60322
 EXCEPT WHERE SHOWN
 OTHERWISE

SCALE: 1/2 SH 1 OF 1

PART NO. SFE TABLE
 B66-2322 C



**SERVICE USE
 ONLY
 REF. DOC**

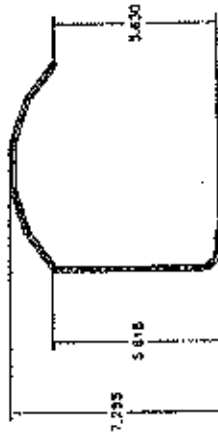
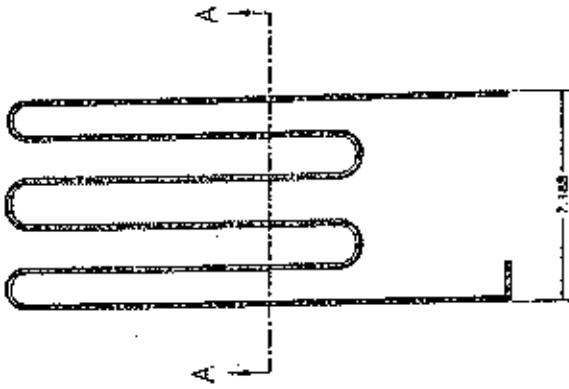
NOTES:

1. COTTER PIN (ITEM 4) TO BE ONLY SLIGHTLY BENT AS SHOWN FOR EASY REMOVAL AT FINAL ASSEMBLY.

THE INFORMATION CONTAINED
 ON THIS DOCUMENT IS THE
 PROPERTY OF PITCO FRIALATOR
 INC. AND MAY NOT BE REPRO-
 DUCED, COPIED, OR DISSEM-
 INATED TO THIRD PARTIES
 WITHOUT THE WRITTEN PERMIS-
 SION OF:
 PITCO FRIALATOR INC.
 CONCORD, NH 03301 U.S.A.

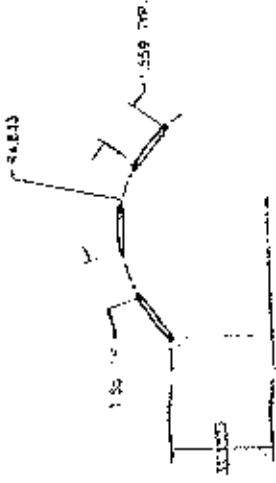
Pitco Frialator		PITCO FRIALATOR, INC. P.O. BOX 501 CONCORD, NH 03302-0501	
TITLE:		HANDLE, DRAIN VALVE ASSEMBLY	
USED ON:		TF2000	
MATERIAL:		SEE BOM	TOLERANCES: .xxx ± .02
DWG APPROVAL	DATE	PART NO:	84002201
DR: BH	8/16/96	SCALE: 1/2	SH 1 OF 1
CK: S.S.	8/20/96	SIZE	DWG NO:
EN NO: 5200	8/16/96	A	B40-022
APPD: S.S.	8/20/96		

B	REV	REVISIONS
5496	EN NO	
10/23/96	DATE	
R.D.K.	DR	
BH	CK	
BH	APPD	

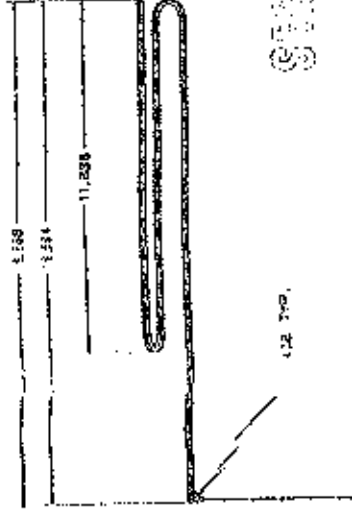


NOTES:

1. TUBING ENDS TO BE FREE OF BURRS AND CHIPS.
2. INSIDE OF TUBE TO BE FREE OF SLARS AND METAL SWINGS.



SECTION A-A



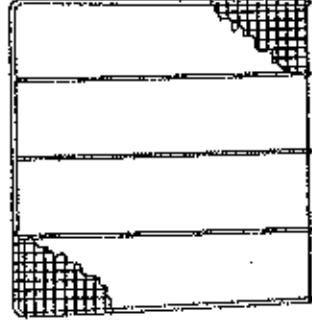
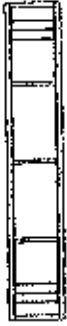
STEEL TUBE ROSE
MILWAUKEE
WISCONSIN

A7010101 Pump Tubing
 P810916 COMPRESS FITG
 A7810201 VAL Tubing

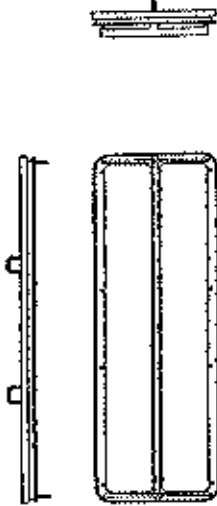
ITEM	QUANTITY	DESCRIPTION
1	1	STEEL TUBE ROSE
2	1	COMPRESS FITG
3	1	PUMP TUBING
4	1	VALVE TUBING
FILTER, TUBE PUMP SEAL LUBRICATION		
70-112 A		



SERVICE USE
ONLY
REF. DOC



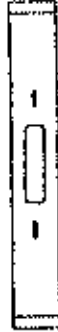
PART DESCRIPTION: WIRE GROMMETS, FILTER BAG HOLDER
PITCO PART NUMBER: A4914201
REQUIRED QUANTITY: 2



PART DESCRIPTION: FILTER, BAG HOLDER WELDMENT
PITCO PART NUMBER: B662701
REQUIRED QUANTITY: 1



PART DESCRIPTION: FILTER, CAP END BAG HOLDER
PITCO PART NUMBER: A7012092
REQUIRED QUANTITY: 4



PART DESCRIPTION: FILTER, CLAMP BAG WELDMENT
PITCO PART NUMBER: B6648701
REQUIRED QUANTITY: 2

TABLE	P/A	REV	P/N	ECN
B665201-C	A			9423

PITCO FRASLATOR, INC. AUG. 1971 201 ENCINO, CA 91030-4001		PART NO: SEE TABLE	
PITCO FRASLATOR, INC. AUG. 1971 201 ENCINO, CA 91030-4001		SCALE: 1/1 SH 1 OF 1	
PITCO FRASLATOR, INC. AUG. 1971 201 ENCINO, CA 91030-4001		C B66-632 A	
DATE	BY	APPROVAL	DATE
1/2/74	C. W.		1/2/74
USED ON	NEAR ASSY		
1F2090			
SEE BOM			