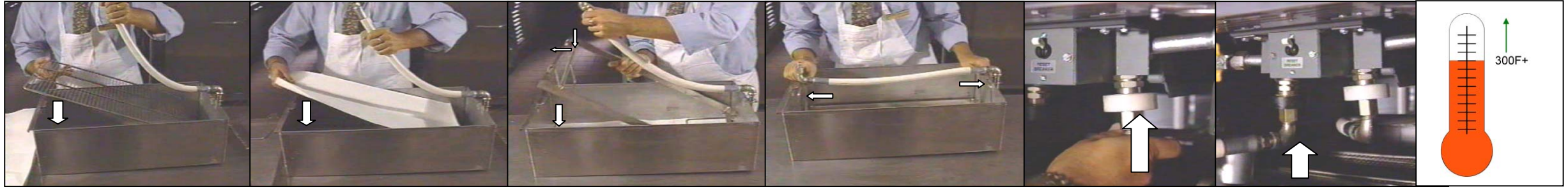




# Built In Filter Operation



Place paper support rack in filter pan.

Place paper on top of support rack.

Place the retaining rack on top of the paper making sure the filter hose support rod is toward the front of the pan

Lock paper retainer handles in place.

Connect filter hose.

Connect flush hose and place on support rod.

Oil must be hot to filter.



Turn the fryer off.

Always wear insulated oil proof gloves and protective clothing.

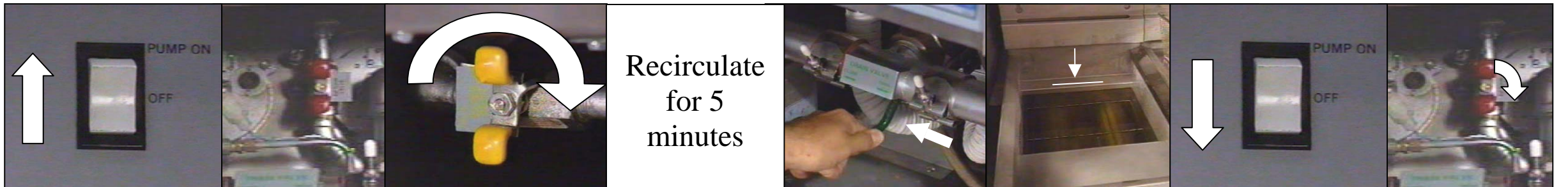
Add filter powder to the oil.

Stir in filter powder.

Open green drain valve.

Open the yellow flush hose valve.

Hold the flush hose nozzle over the fryer.



Turn on the filter pump.

Open the red return valve.

Close the yellow flush hose valve.

Recirculate for 5 minutes

Let recirculate for 5 minutes.

Close the green drain valve.

Allow the tank to refill completely.

Turn the pump switch off.

Close red return valve.