

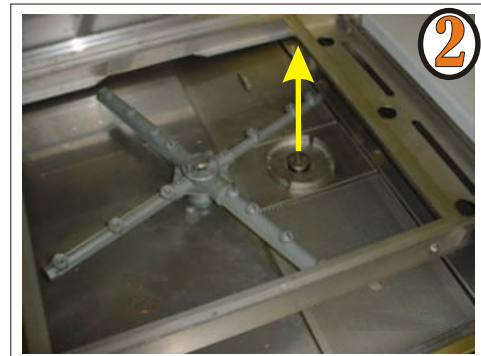
F 22

DAILY CLEANING PROCEDURES TO FOLLOW

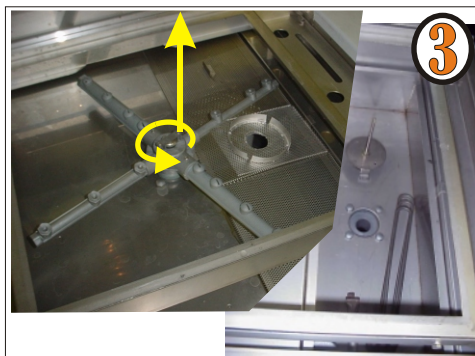
Done after every meal period and at the end of day



Push Power switch to OFF



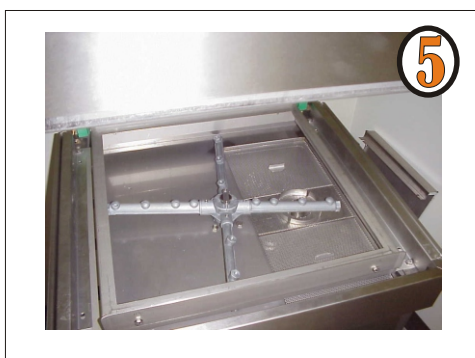
Open the door.
 Remove the Over-flow tube,
 Drain unit.



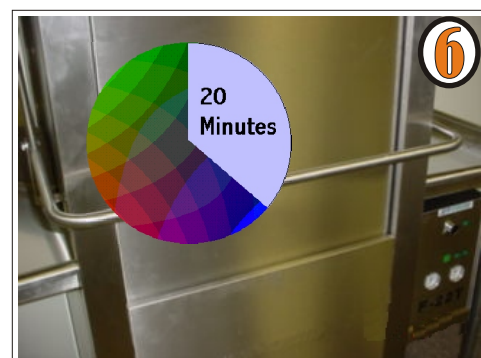
Let the water drain in the wash tank.
 Remove the spin-arm and the screens.



Clean the screens and wash tank of debris.
 Rinse wash tank.
 Don't push food debris down the drain.



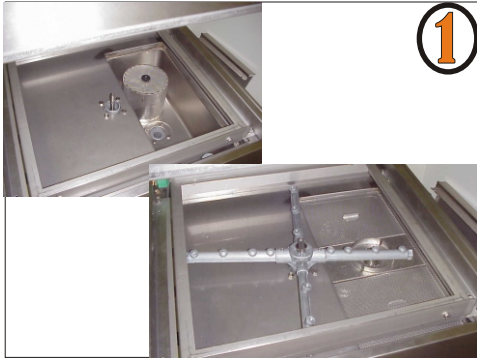
Put all parts back in the wash tank.
 Leave the dishwasher empty overnight



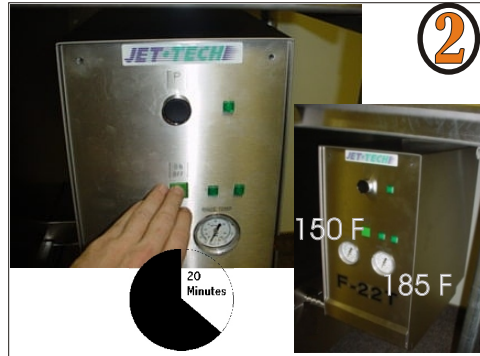
OR refill for more usage by closing the
 door and push the power button.
 Wait 20 minutes before pressing the start button.

F 22

DAILY OPERATION PROCEDURES TO FOLLOW



At the start of each day, ensure dishwasher is empty (no water) and that the wash tank is clean (no debris)



Close the door, press the power button to ON. Wait for the water to obtain optimum washing temperature.



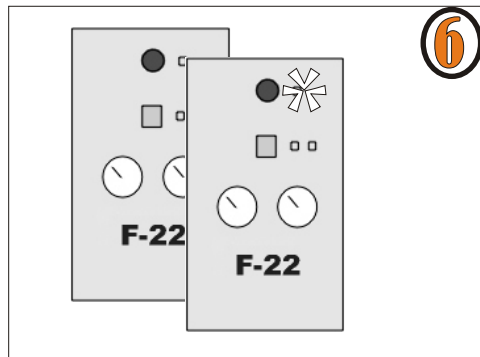
Pre-rinse dishes, glasses and cups.



Load rack in the dishwasher and close the door.



Press the Start button or simply close the door to start the wash cycle.



Wait for the green light to turn OFF before removing the rack. Repeat from step 3 for more trays.