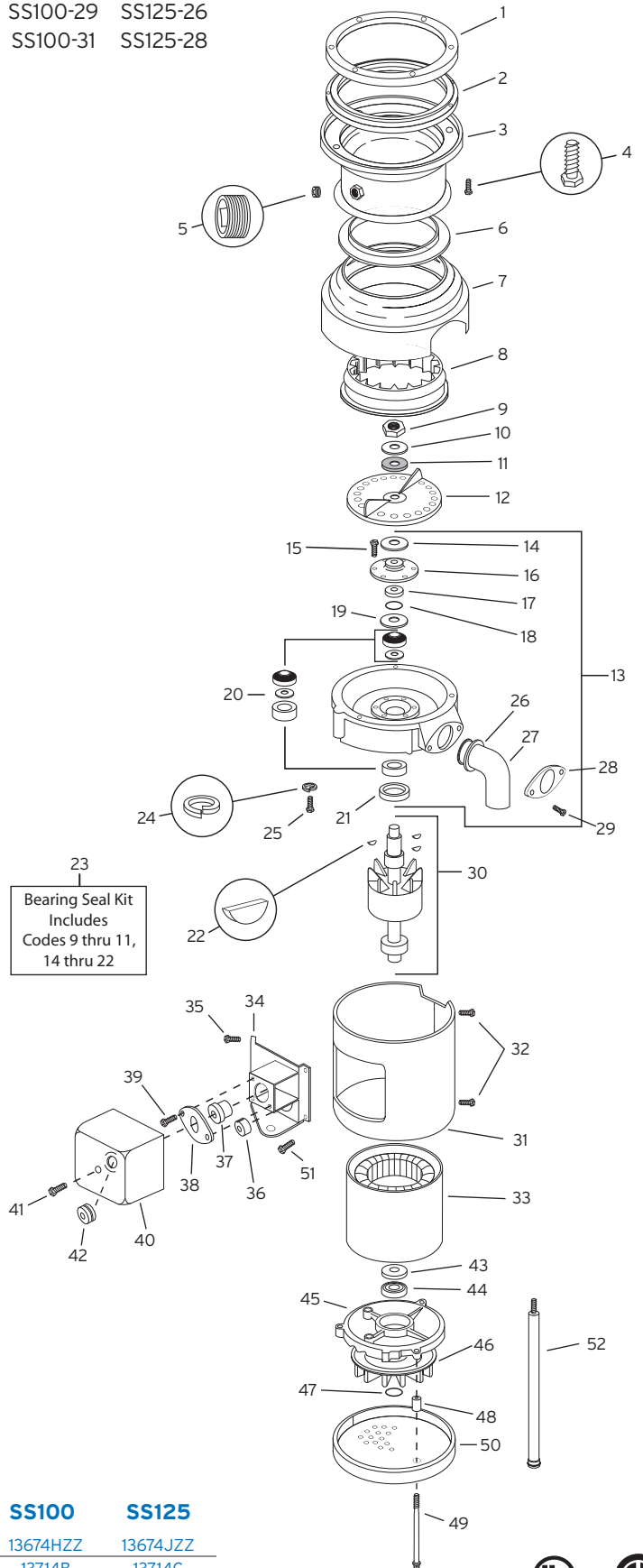


UL Approved  
CSA Approved

SS50-27 SS75-28 SS100-29 SS125-26  
SS50-29 SS75-30 SS100-31 SS125-28

CODE #	DESCRIPTION	QTY	PART NUMBER
1	Mounting Flange	1	11004
2	Mounting Gasket	1	11016
3	Upper Body Assy	1	11020A
4	Screw (1/4-20 x 3/4)	6	1491
5	Pipe Plug	1	11227
6	Shredder Gasket	1	11006
7	Body & Cover Assy	1	12442ZZ
8	Stationary Shredder	1	11252AZZ
9	Nut	1	11260
10	Washer	1	12445
11	Fiber Washer	1	12142
12	Rotating Shredder Assy	1	12944ZZ
13	Upper End Bell Assy (14-22)	1	13722
14	Shield	1	12936
15	Screw (8-18 x 1/2)	6	1269
16	Seal Assy	1	12934A
17	Spacer Sleeve	1	12935
18	O-Ring	1	12860
19	Slinger	1	12319
20	Upper Bearing Assy	1	12610
21	Water & Oil Seal	1	12326
22	Woodruff Key	3	11322
23	Bearing Seal Kit (9-11 & 14-22)	1	13080
24	Lock Washer	3	11444
25	Screw (1/4-20 x 1)	3	3135
26	Tailpipe Gasket	1	1470
27	Tailpipe	1	8219
28	Tailpipe Flange	1	1461
29	Screw (1/4-20 x 1/2)	2	1468
30	Rotor & Shaft Assy (Inc 43)	1	See Chart "A"
31	Trim Band	1	12370ZZ
32	Screw (8-32 x 1/2)	2	1836A
33	Stator Assy	1	See Chart "A"
34	Bracket Assy	1	12433EZZ
35	Screw (8-18 x 1/4)	4	11448
36	Bushing	1	12384
37	Overload Protector	1	See Chart "A"
38	Overload Clamp	1	12378
39	Screw (8-32 x 1/2)	2	8221
40	Terminal Box Assy (Inc 42)	1	13396ZZ
41	Screw (8-32 x 1-1/4)	1	12381
42	Overload Grommet	1	12383
43	Lower Bearing	1	13709
44	Pre-Load Spring	1	13678
45	Lower End Frame	1	13747
46	Fan	1	13676ZZ
47	Retaining Ring	1	13677ZZ
48	Tube Spacer	3	12490
49	Thru Bolt	3	11940A
50	Bottom Cover	1	12396
51	Ground Screw	1	2466A
52	Foot Tube Assy (Optional)	2	11757B



**A**

CODE #	DESCRIPTION	QTY	SS50	SS75	SS100	SS125
30	Rotor & Shaft Assy	1	13674EZZ	13674GZZ	13674HZZ	13674JZZ
33	Stator Assy	1	13714	13714A	13714B	13714C
37	Overload Protector	1	13422H	13422K	13422N	13422M

