

IN SINK ERATOR

Model SS200-31

Commercial

Warranty:
1 Year Warranty

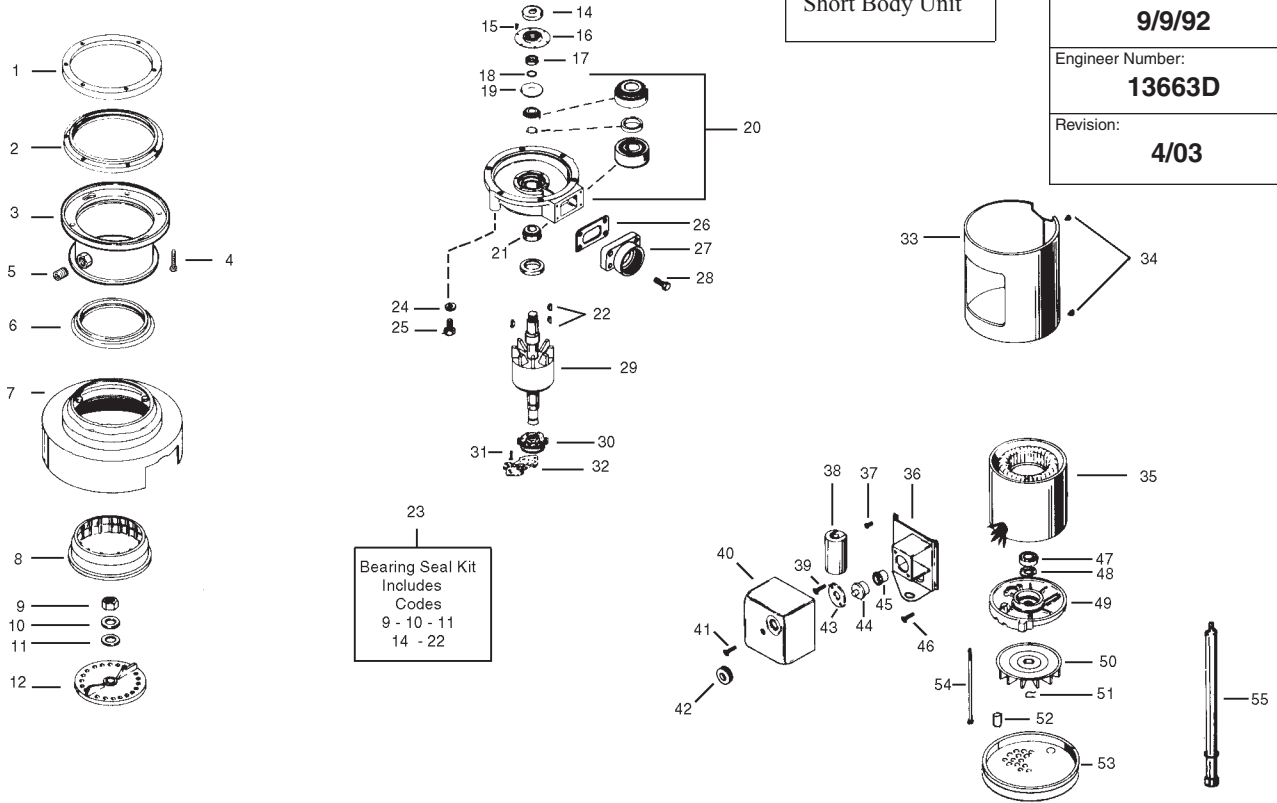
Volts - Phase - Herz
115/208V - 1Ph - 60Hz

Short Body Unit

Production Date:
9/9/92

Engineer Number:
13663D

Revision:
4/03



ORDER BY PART NUMBER, NOT CODE NUMBER

CODE NO.	PART NO.	NO. REQ.	DESCRIPTION	CODE NO.	PART NO.	NO. REQ.	DESCRIPTION
1	11004	1	Flange, Mounting	29	13675AZZ	1	Rotor & Shaft Assembly (Incl. Codes 30 & 47)
2	11016	1	Gasket, Mounting	30	13708	1	Centrifugal Actuator
3	11024C	1	Body Upper Assy	31	8221	2	Screw (8-32 x 1/2)
4	1491	6	Screw (1/4-20 x 3/4)	32	13707	1	Switch, Start
5	11227	1	Plug, Pipe	33	12426	1	Trim Band
6	11007	1	Gasket, Shredder	34	1836A	2	Screw (8-32 x 1/2)
7	12443	1	Body & Cover Assy	35	13713E	1	Stator Assembly
8	11251	1	Shredder, Stationary	36	12433K	1	Bracket Assembly (Mounting)
9	11260	1	Nut	37	11448	4	Screw (8-18 x 1/4)
10	12445	1	Washer	38	11868	1	Capacitor
11	12142	1	Washer, Fiber	39	8221	2	Screw (8-32 x 1/2)
12	12946	1	Rotor Shredder Assy	40	13396	1	Box, Terminal Assy (Incl. Code 42)
13	13723	1	Upper End Bell Assy (Includes Codes 14 - 22)	41	12381	1	Screw (8-32 x 1-1/4)
14	12936	1	Shield	42	12383	1	Grommet
15	1269	6	Screw (8 -18 x 1/2)	43	12378	1	Clamp, Overload
16	12934A	1	Seal Assy	44	13422D	1	Overload Protector
17	12935	1	Sleeve, Spacer	45	12384	1	Bushing
18	12860	1	O-Ring	46	2466A	1	Screw, Ground
19	12319	1	Slinger	47	13709	1	Bearing, Lower
20	12610	1	Upper Bearing Assy	48	13678	1	Spring, Pre-load
21	12326	1	Water & Oil Seal	49	13747	1	End Frame, Lower
22	11322	3	Key, Woodruff	50	13676ZZ	1	Fan
23	13080	1	Kit, Bearing Seal (Includes Codes 9-11 & 14-22)	51	13677ZZ	1	Ring, Retaining
24	11444	6	Washer, Lock	52	12490	3	Tube, Spacer
25	11524	6	Screw (1/4 - 20 x 1)	53	12432	1	Cover, Bottom
26	11459	1	Gasket, Tailpipe	54	12382A	3	Bolt, Thru
27	13997	1	Flange, Tailpipe	55	11757B	2	Tube, Foot Assembly (Optional)
28	13369	4	Screw (1/4-20 x 3/4)				