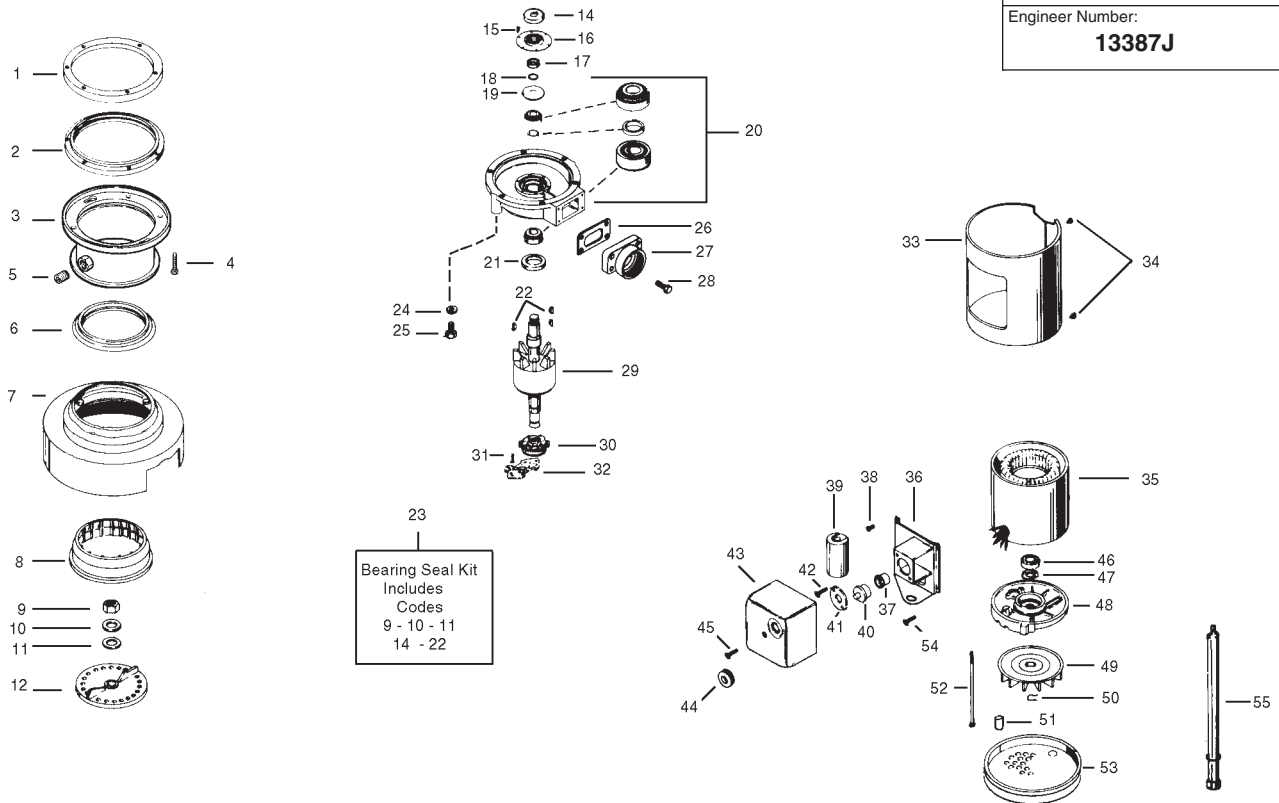


Warranty:	1 Year Full Warranty
Volts-Phase-Hertz	115/208/230V-1Ph-60Hz
Production Date:	5/88
Engineer Number:	13387J



ORDER BY PART NUMBER, NOT CODE NUMBER

CODE NO.	PART NO.	NO. REQ.	DESCRIPTION	CODE NO.	PART NO.	NO. REQ.	DESCRIPTION
1	11004	1	Mounting Flange (Sold Separately)	29	2949A	1	Rotor & Shaft Assembly (Incl. 30 & 46) Single Phase
2	11016	1	Mounting Gasket (Sold Separately)	30	12954	2	Centrifugal Actuator (Single Phase only)
3	11024C	1	Upper Body Assembly	31	8221	2	Screw
4	1491	6	Screw	32	12393	1	Start Switch (Single Phase only)
5	11227	1	Plug Pipe	33	12426	1	Trim Band
6	11006	1	Shredder Gasket	34	1836A	2	Screw
7	12443	1	Body & Cover Assembly	35	13075K	1	Stator (Single Phase Only)
8	11251	1	Stationary Shredder	36	12433	1	Mounting Bracket Assy (Single Phase Only)
9	11260	1	Nut	37	12384	1	Bushing
10	12445	1	Washer	38	11448	4	Screw
11	12142	1	Fiber Washer	39	11868	1	Capacitor (Single Phase Only)
12	12946	1	Rotor Shredder Assy	40	13422S	1	Overload Protector
13	13082	1	Upper End Bell Assy (Incl. Codes 9-11, & 14-22)	41	12378	1	Overload Clamp
14	12936	1	Shield	42	5765	2	Tapping Screw
15	1269	6	Screw	43	12372	1	Terminal Box
16	12934A	1	Seal Assembly	44	12383	1	Overload Grommet
17	12935	1	Spacer Sleeve	45	12381	1	Screw
18	12860	1	O-Ring	46	12415	1	Lower Bearing
19	12319	1	Slinger	47	12399	1	Spring Washer
20	12610	1	Upper Bearing Assy	48	12684	1	Lower End Frame Assy.
21	12326	1	Water & Oil Seal	49	12395	1	Fan
22	11322	3	Woodruff Key	50	12635	1	Retaining Ring
23	13080	1	Bearing Seal Kit (Incl. codes 9-11 & 14-22)	51	12490	3	Spacer Tube
24	11444	6	Lock Washer	52	12382A	3	Thru Bolt
25	11524	6	Screw	53	12432	1	Bottom Cover
26	11459	1	Tailpipe Gasket	54	2466A	1	Ground Screw
27	13997	1	Tailpipe Flange	55	11757B	2	Foot Tube Assy (Optional)
28	13369	4	Screw				