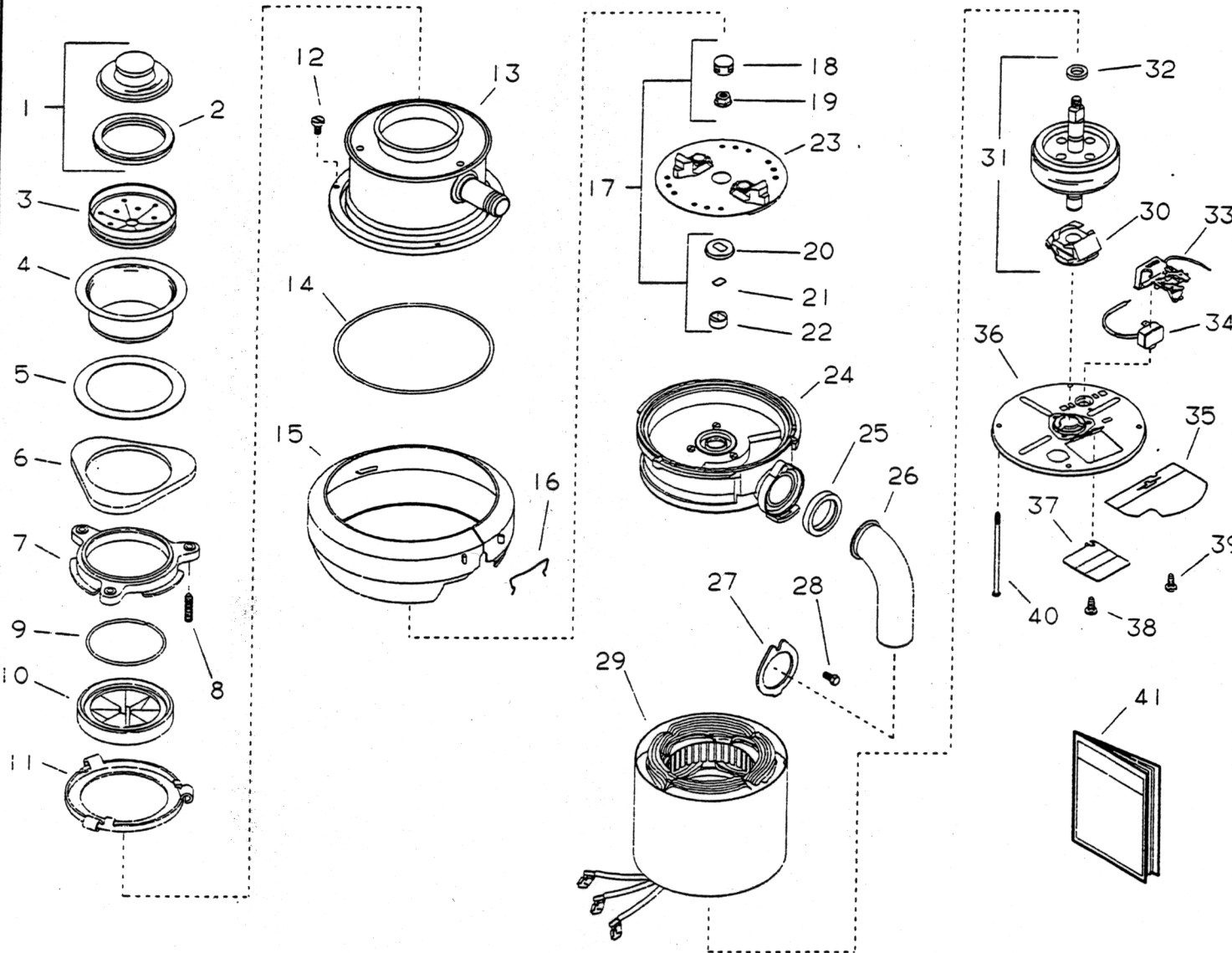


IN-SINK-ERATOR

U. S. A.
MODEL PRO 333/SS
 120V/60Hz. 3/4 H.P.

START DATE
 3/30/92
 ENGINEER NUMBER
 70452

REV:



ORDER BY PART NUMBER, NOT CODE NUMBER

CODE NO.	PART NO.	NO. REQ.	DESCRIPTION	CODE NO.	PART NO.	NO. REQ.	DESCRIPTION
1	5032-A	1	STOPPER ASSEMBLY (INCLUDES CODE 2)	22		1	SLEEVE
2	5029	1	GASKET, STOPPER	23	8581	1	SHREDDER ASSEMBLY, ROTATING
3	3433	1	BAFFLE	24	9209-C	1	END BELL ASSEMBLY, UPPER
4	10025-B	1	FLANGE, STRAINER	25	1470	1	GASKET, TAILPIPE
5	1160	1	SEAL, SINK FLANGE	26	8219	1	TAILPIPE
6	5150-t	1	FLANGE, BACKUP	27	5490	1	FLANGE, TAILPIPE
7	5141	1	FLANGE, MOUNTING	28	1491	1	SCREW, TAILPIPE
8	5147	3	SCREW, BACKUP	29	8629-A	1	STATOR ASSEMBLY
9	5166	1	RING, RETAINING	30	2467	1	CENTRIFUGAL ACTUATOR ASSEMBLY
10	1010-A	1	GASKET, MOUNTING	31	3373-A	1	ROTOR & SHAFT ASSEMBLY (INCLUDES CODES 30 & 32)
11	5298	1	FLANGF, BODY	32	2642	1	WASHER
12	2439	3	SCREW, TAPPING	33	3706-C	1	SWITCH ASSEMBLY, START
13	9872-E	1	BODY CONTAINER ASSEMBLY (INCLUDES CODE 14)	34	2267-C4	1	OVERLOAD, PROTECTOR
14	2539	1	O-RING	35	4134	1	SHIELD, WIRE
15	2396-R	1	TRIM SHELL ASSEMBLY (INCLUDES CODE 16)	36	9901	1	END FRAME ASSEMBLY, LOWER (INCLUDES CODE 39)
16	5284	1	CLIP, TRIM SHELL	37	3584	1	COVER, TERMINAL
17	8583	1	SLEEVE & SEAL KIT (INCLUDES CODES 18 - 22)	38	11448	1	SCREW, TERMINAL COVER
18	2854	1	PLUG	39	2466-A	1	SCREW, GROUND
19		1	NUT, FLANGE	40	2486-A	2	BOLT, THRU
20		1	SCREW, TAPPING	41	70452	1	USE & CARE BOOK, FT. INSTRUCTION ASSEMBLY (NOT SHOWN) (INCLUDES CODE 7108-29-04)