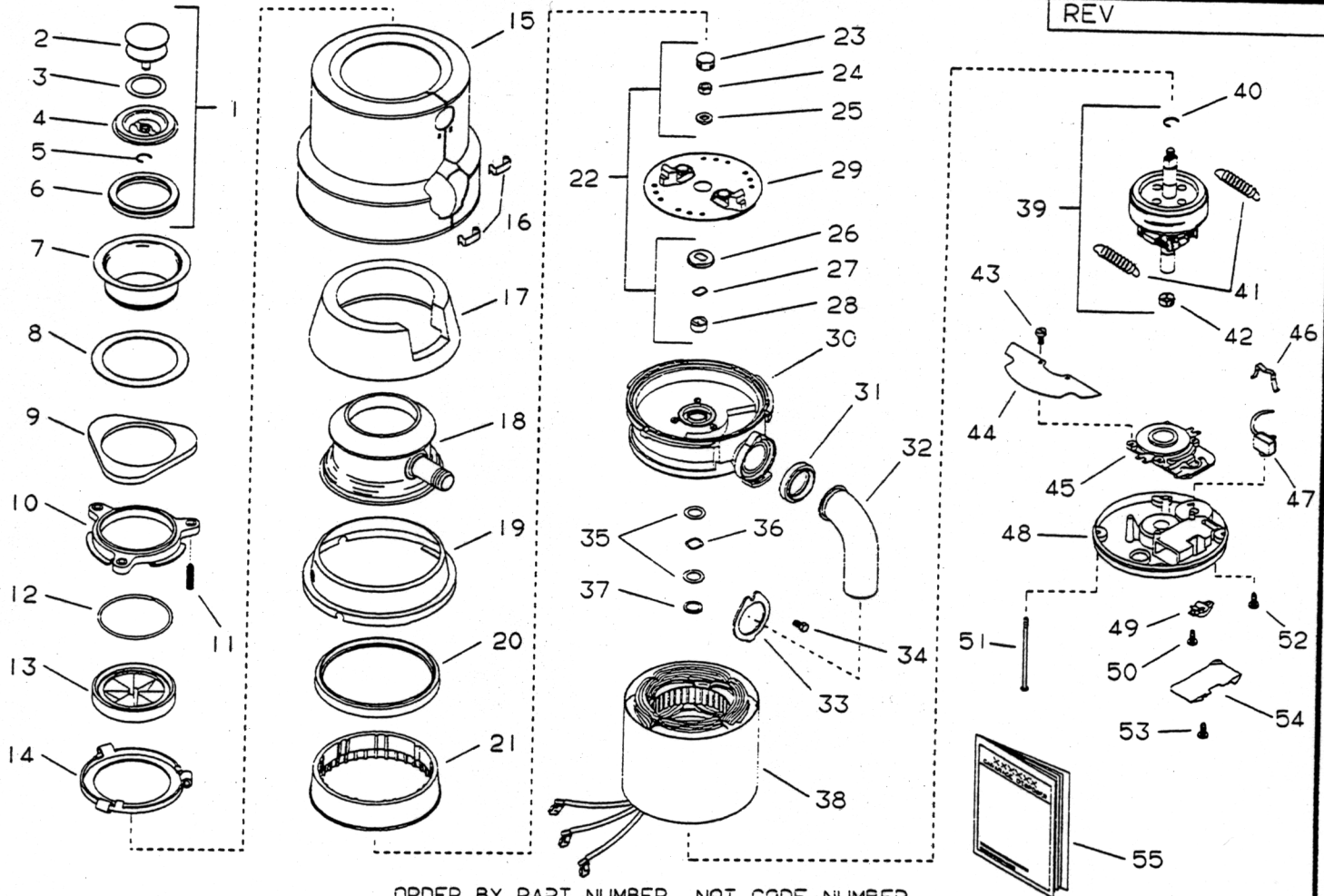


CROSLEY

MODEL MP-6000

20V/60HZ.

START DATE
6/4/90
ENGINEER NUMBER
70043



ORDER BY PART NUMBER, NOT CODE NUMBER

CODE NO.	PART NO.	NC. REQ.	DESCRIPTION	CODE NO.	PART NO.	NC. REQ.	DESCRIPTION
1	1876	1	STOPPER ASSEMBLY (INCLUDES CODES 2 THRU 6)	30	9209-D	1	END BELL ASSEMBLY, UPPER
2	1875	1	STOPPER, HANDLE	31	1470	1	GASKET, TAILPIPE
3	1144	1	GASKET, STOPPER (INNER)	32	8219	1	TAILPIPE
4	5015-C	1	GASKET, BODY	33	5490	1	FLANGE, TAILPIPE
5	5045	1	RING, RETAINING	34	1491	1	SCREW, TAILPIPE
6	5029	1	GASKET, STOPPER (OUTER)	35	3551	2	WASHER, THRUST
7	10025-D	1	FLANGE, STRAINER	36	3550	1	WASHER, SPRING
8	1160	1	SEAL, SINK FLANGE	37	8793	1	WASHER, CUP
9	5150-E	1	FLANGE, BACKUP	38	8628-D	1	STATOR ASSEMBLY
10	5141	1	FLANGE, MOUNTING	39	8460-C	1	ROTOR & SHAFT ASSEMBLY (INCLUDES CODES 40 THRU 42)
11	5147	3	SCREW, BACKUP	40	4348	1	RING, C
12	5166	1	RING, RETAINING	41	1588	2	SPRING (CENTRIFUGAL ACTUATOR)
13	1010-A	1	GASKET, MOUNTING	42	8361	1	TRANSFER ASSEMBLY
14	5298	1	FLANGE, BODY	43	8221	4	SCREW
15	9194-G	1	TRIM SHELL, ASSEMBLY (TOP) (INCLUDES CODE 16)	44	6618	1	INSULATION, SHIELD
16	2037	2	CLIP, TRIM SHELL	45	4469	1	SWITCH ASSEMBLY, START
17	1221-A	1	INSULATION, TOP	46	3620	1	CLIP, OVERLOAD
18	3559-J	1	BODY CONTAINER ASSEMBLY (INCLUDES SOUND INSULATION)	47	2267-BS	1	OVERLOAD, PROTECTOR
19	1225-D	1	GASKET, SHREDDER	48	9163	1	END FRAME ASSEMBLY, LOWER (INCLUDES CODES 46 & 52)
20	4395	1	BODY, LOWER	49	5060	4	CLAMP, BX
21	1248	1	SHREDDER, STATIONARY	50	5075	2	SCREW, BX CLAMP
22	8583	1	SLEEVE & SEAL KIT (INCLUDES CODES 23 THRU 28)	51	5949	4	BOLT, THRU
23	2854	1	PLUG	52	1966	1	SCREW, GROUND
24		1	NUT, FLANGE	53	5091-C	1	COVER, TERMINAL
25		1	WASHER	54	8221	1	SCREW, TERMINAL COVER
26		1	SLINGER	55	70031	1	USE & CARE BOOKLET (UL)
27		1	SEAL	56	2610-JS	1	INSTRUCTION ASSEMBLY (NOT SHOWN) (INCLUDES CODES 31 THRU 34 & 55)
28		1	SLEEVE				
29	8581	1	SHREDDER ASSEMBLY, ROTATING				