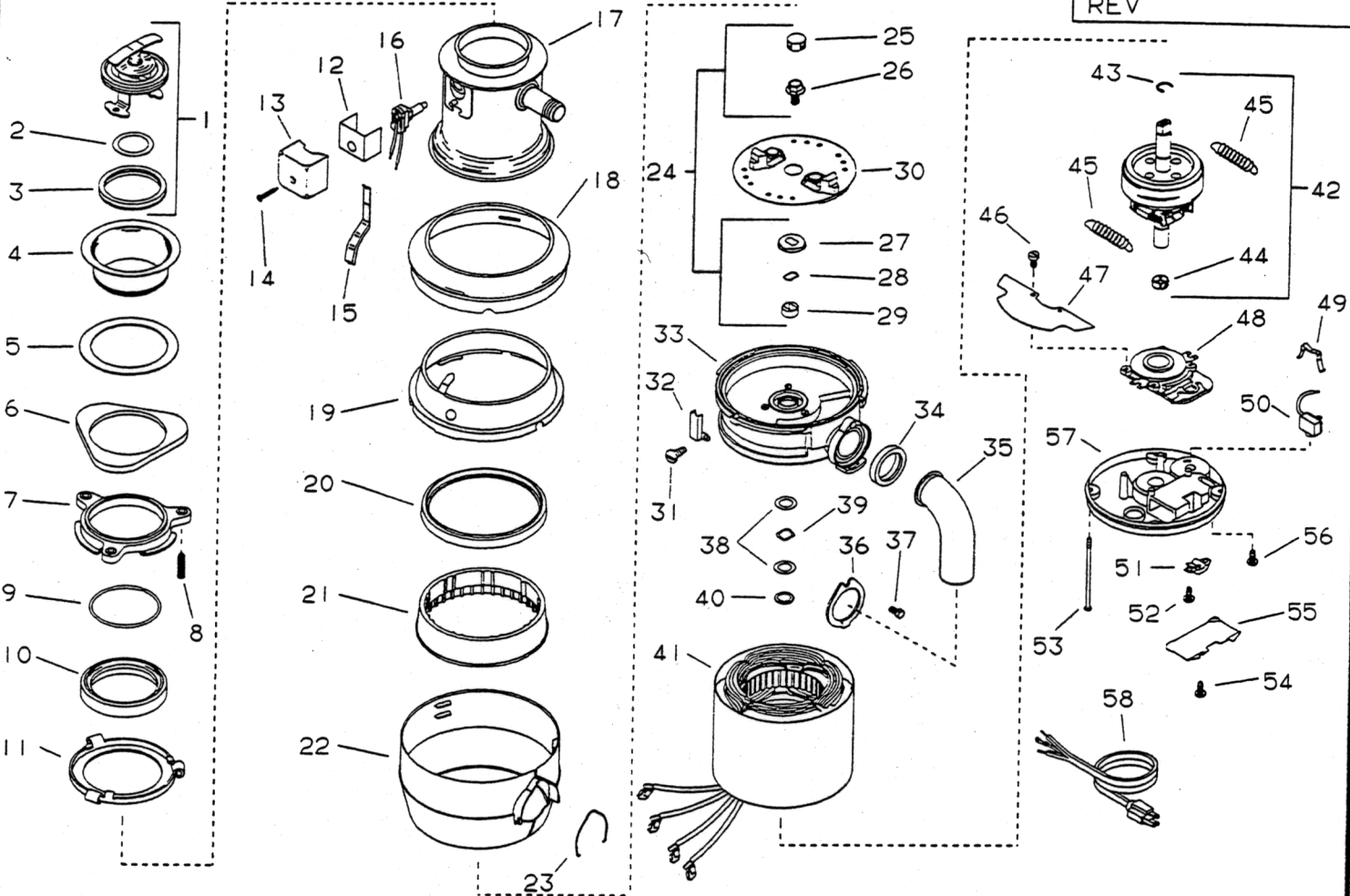


# EMERSON

UL  
**MODEL E90-9**  
 115v/60Hz.

START DATE  
 01-18-93  
 ENGINEER NUMBER  
 70568

REV



ORDER BY PART NUMBER, NOT CODE NUMBER

CODE NO.	PART NO.	NO. REQ.	DESCRIPTION	CODE NO.	PART NO.	NO. REQ.	DESCRIPTION
1	1019-C	1	LOCK STOPPER ASSEMBLY (INCLUDES CODES 2 & 3)	32	1266	1	SHIELD, WIRE COVER
2	1144	1	GASKET, STOPPER (INNER)	33	9209-M	1	UPPER ENDBELL ASSEMBLY
3	1146-A	1	GASKET, STOPPER (OUTER)	34	1470	1	GASKET, TAILPIPE
4	5170-AD	1	FLANGE, STRAINER	35	8219	1	TAILPIPE
5	1160	1	SEAL, SINK FLANGE	36	5490	1	FLANGE, TAILPIPE
6	5150-E	1	FLANGE, BACKUP	37	1491	1	SCREW, TAILPIPE
7	5141	1	FLANGE, MOUNTING	38	3551	2	WASHER, THRUST
8	5147	3	SCREW, BACKUP	39	3550	1	WASHER, SPRING
9	5166	1	RING, RETAINING	40	8793	1	WASHER, CUP
10	1155	1	GASKET, MOUNTING	41	8628-E	1	STATOR ASSEMBLY
11	5298	1	FLANGE, BODY	42	70488	1	SHAFT ASSEMBLY (INCLUDES CODES 38-40, 43-45)
12	4152	1	INSULATION, SWITCH COVER	43	4348	1	"C"RING
13	2586-B	1	COVER, SWITCH	44	8361	1	TRANSFER ASSEMBLY
14	2588	1	SCREW, TAPPING (SWITCH COVER)	45	7738	2	SPRING (CENTRIFUGAL SWITCH)
15	1252-A	1	BRACKET, WIRE COVER	46	8221	4	SCREW (START-REVERSE SWITCH)
16	2590-A	1	SWITCH ASSEMBLY (PUSH BUTTON)	47	6618	1	SHIELD, WIRE
17	3559-K	1	BODY CONTAINER ASSEMBLY	48	4469	1	SWITCH ASSEMBLY
18	1383-A	1	COVER, TRIM	49	3620	1	CLIP, OVERLOAD
19	1225-E	1	BODY, LOWER	50	2267-BU	1	PROTECTOR, OVERLOAD
20	4395	1	GASKET, SHREDDER	51	5060	1	CLAMP, BX
21	1248	1	SHREDDER, STATIONARY	52	5075	2	SCREW, BX CLAMP
22	1398-K	1	TRIM SHELL ASSEMBLY	53	5949	4	BOLT, THRU
23	5097	1	CLIP, TRIM SHELL	54	8221	1	SCREW, TERMINAL COVER
24	70647	1	SLEEVE & SEAL KIT (INCLUDES CODES 25 THRU 29)	55	5091-C	1	COVER, TERMINAL
25	2854	1	PLUG	56	1966	1	SCREW, GROUND
26	N/A	1	BOLT, HEX HEAD FLANGE	57	9163	1	LOWER ENDFRAME ASSEMBLY (INCLUDES CODES 49 & 56)
27	N/A	1	SLINGER	58	2272	1	PLUG AND CORD (ACCESSORY)
28	N/A	1	SEAL	59	9456	1	USE AND CARE BOOKLET (NOT SHOWN)
29	N/A	1	SLEEVE	2610-HG	1	INSTRUCTION ASSEMBLY (NOT SHOWN) (INCLUDES CODES 34 THRU 37, & 59)	
30	8581	1	ROTATING SHREDDER ASSEMBLY				
31	11448	1	SCREW, TAPPING				