

EMERSON

MODEL E90-15

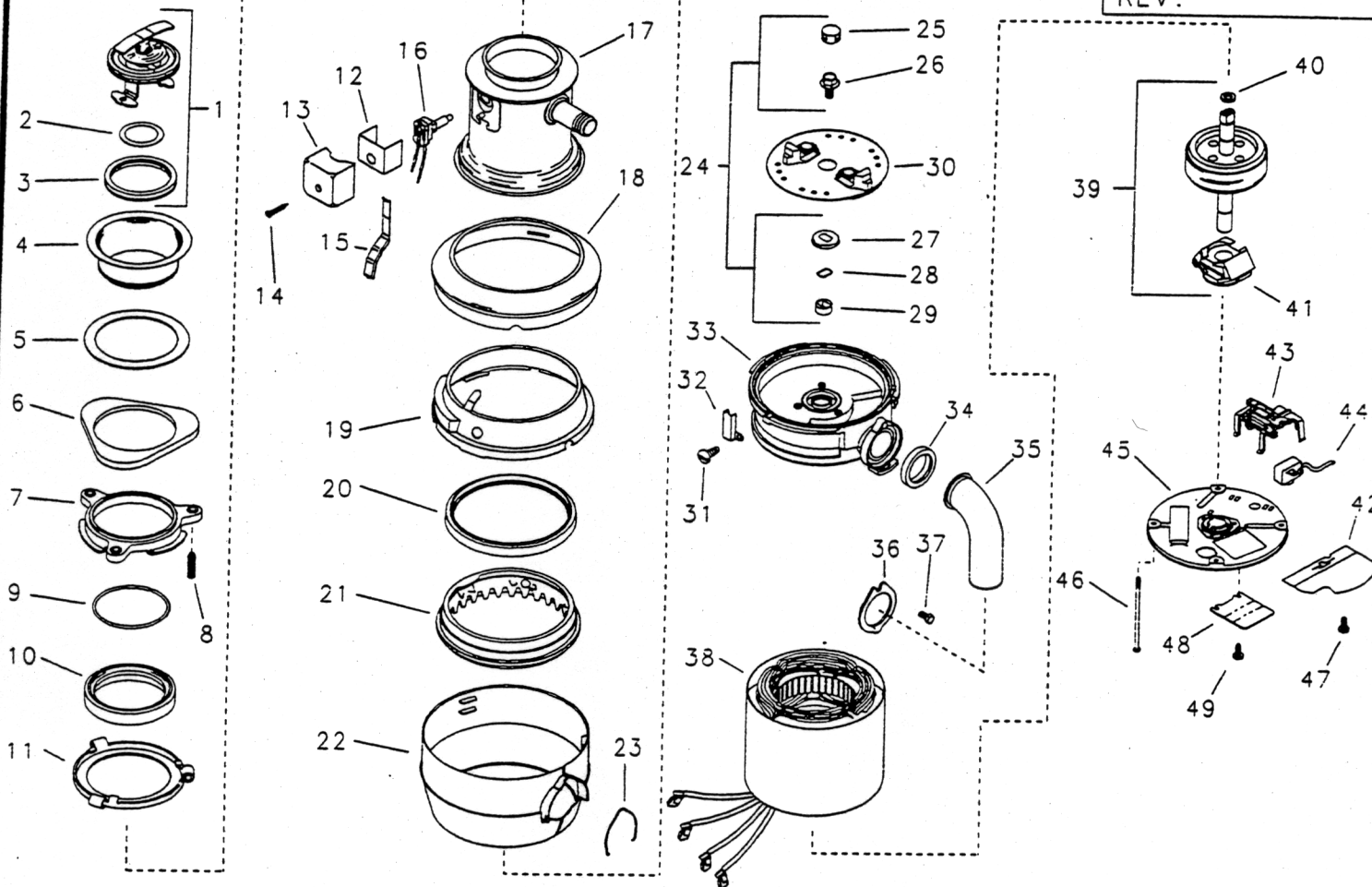
FULL 1 YR

120v/60Hz.

3/4 H.P.

START DATE
6/96ENGINEER NUMBER
71640

REV:



ORDER BY PART NUMBER, NOT CODE NUMBER

CODE NO.	PART NO.	NO. REQ.	DESCRIPTION	CODE NO.	PART NO.	NO. REQ.	DESCRIPTION
1	1019-C	1	LOCK STOPPER ASSY (INCLUDES CODES 2-3)	31	8221	1	SCREW, TAPPING
2	1144	1	GASKET, STOPPER (INNER)	32	1266	1	SHIELD, WIRE COVER
3	1146-A	1	GASKET, STOPPER (OUTER)	33	9209-M	1	UPPER ENDBELL ASSY
4	5170-AD	1	FLANGE, STRAINER	34	1470	1	GASKET, TAILPIPE
5	1160	1	GASKET, SINK FLANGE	35	8219	1	TAILPIPE
6	5150-E	1	FLANGE, BACKUP	36	5490	1	FLANGE, TAILPIPE
7	5141	1	FLANGE, MOUNTING	37	1491	1	SCREW, TAILPIPE
8	5147	3	SCREW, BACKUP	38	8628-E	1	STATOR ASSY
9	5166	1	RING, RETAINING	39	70423	1	SHAFT ASSY (INCLUDES CODES 40-41)
10	1155	1	GASKET, MOUNTING	40	2642	1	WASHER
11	5298	1	FLANGE, BODY	41	2467	1	SWITCH, CENTRIFUGAL ACTUATOR
12	4152	1	INSULATION, SWITCH COVER	42	4134	1	SHIELD, WIRE
13	2586-B	1	COVER, SWITCH	43	70360	1	SWITCH, START REVERSE
14	2588	1	SCREW, TAPPING (SWITCH COVER)	44	2267-CH	1	PROTECTOR, OVERLOAD
15	1252-A	1	BRACKET, WIRE COVER	45	70424	1	LOWER ENDFRAME ASSY (INCLUDES CODE 47)
16	2590-A	1	SWITCH ASSY (PUSH BUTTON)	46	2486-A	2	BOLT, THRU
17	3559-T	1	BODY CONTAINER ASSY (INCLUDES CODE 20)	47	2466-A	1	SCREW, GROUND
18	1383-A	1	COVER, TRIM	48	71387	1	COVER, TERMINAL
19	1225-N	1	BODY, LOWER	49	70734	1	SCREW, TERMINAL COVER
20	4395	1	GASKET, SHREDDER	50	9456	1	INSTALLATION, CARE & USE BOOK (NOT SHOWN)
21	70814	1	STATIONARY, SHREDDER	51	2610-PD	1	INSTRUCTION ASSY (NOT SHOWN) (INCLUDES CODES 34-37 & 50)
22	1398-K	1	TRIM SHELL ASSY				
23	5097	1	CLIP, TRIM SHELL				
24	70647	1	SLEEVE & SEAL KIT (INCLUDES CODES 25-29)				
25	2854	1	PLUG				
26	N/A	1	BOLT, HEX HEAD FLANGE				
27	N/A	1	SLINGER				
28	N/A	1	SEAL				
29	N/A	1	SLEEVE				
30	71022	1	ROTATING SHREDDER ASSY				