

# WP / EMERSON

## MODEL E120-19

5 YR FULL WRNTY

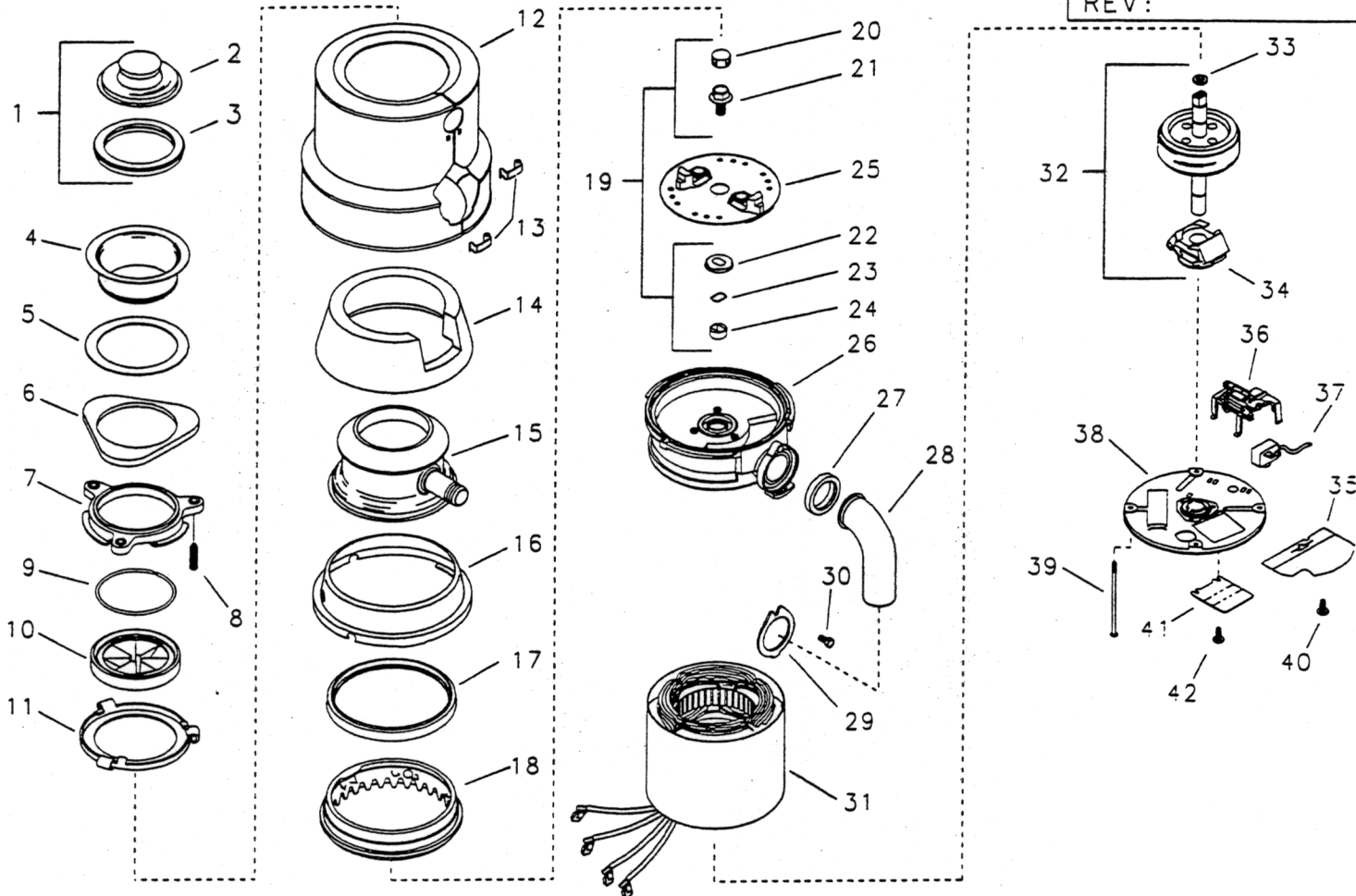
120v/60Hz.

3/4 H.P.

START DATE  
1-96

ENGINEER NUMBER  
71388/G

REV:



ORDER BY PART NUMBER, NOT CODE NUMBER

CODE NO.	PART NO.	NO. REQ.	DESCRIPTION	CODE NO.	PART NO.	NO. REQ.	DESCRIPTION
1	5032-A	1	STOPPER ASSY (INCLUDES CODES 2-3)	31	8628-E	1	STATOR ASSY
2	5031-C	1	STOPPER - POLISHED	32	70423	1	SHAFT ASSY (INCLUDES CODES 33-34)
3	5029	1	GASKER, STOPPER	33	2642	1	WASHER
4	5170-AP	1	FLANGE, STRAINER	34	2467	1	SWITCH, CENTRIFUGAL ACTUATOR
5	1160	1	GASKET, SINK FLANGE	35	4134	1	SHIELD, WIRE
6	5150-E	1	FLANGE, BACKUP	36	70360	1	SWITCH, START REVERSE
7	5141	1	FLANGE, MOUNTING	37	2267-CH	1	PROTECTOR, OVERLOAD
8	5147	3	SCREW, BACKUP	38	70424	1	LOWER ENDFRAME ASSY (INCLUDES CODE 40)
9	5166	1	RING, RETAINING	39	2486-A	2	BOLT, THRU
10	1010-A	1	GASKET, MOUNTING	40	2466-A	1	SCREW, GROUND
11	5298	1	FLANGE, BODY	41	71387	1	COVER, TERMINAL
12	3548-E	1	TRIM SHELL ASSY	42	70734	1	SCREW, TERMINAL COVER
13	2037	2	CLIP, TRIM SHELL	43	9456	1	INSTALLATION, CARE & USE BOOK (NOT SHOWN)
14	1221-A	1	INSULATION, TOP	44	2610-PD	1	INSTRUCTION ASSY (NOT SHOWN) (INCLUDES CODES 27-30 & 43)
15	3559-D	1	BODY CONTAINER ASSY (INCLUDES CODE 17)				
16	1225-D	1	RING, CLAMPING				
17	4395	1	GASKET, SHREDDER				
18	70814	1	ADAPTER ASSY, SHREDDER				
19	70647	1	SLEEVE & SEAL KIT (INCLUDES CODES 20-24)				
20	2854	1	PLUG				
21	N/A	1	BOLT, HEX HEAD FLANGE				
22	N/A	1	SLINGER				
23	N/A	1	SEAL				
24	N/A	1	SLEEVE				
25	71022	1	ROTATING SHREDDER ASSY				
26	9209-M	1	UPPER ENDBELL ASSY				
27	1470	1	GASKET, TAILPIPE				
28	8219	1	TAILPIPE				
29	5490	1	FLANGE, TAILPIPE				
30	1491	1	SCREW, TAILPIPE				