

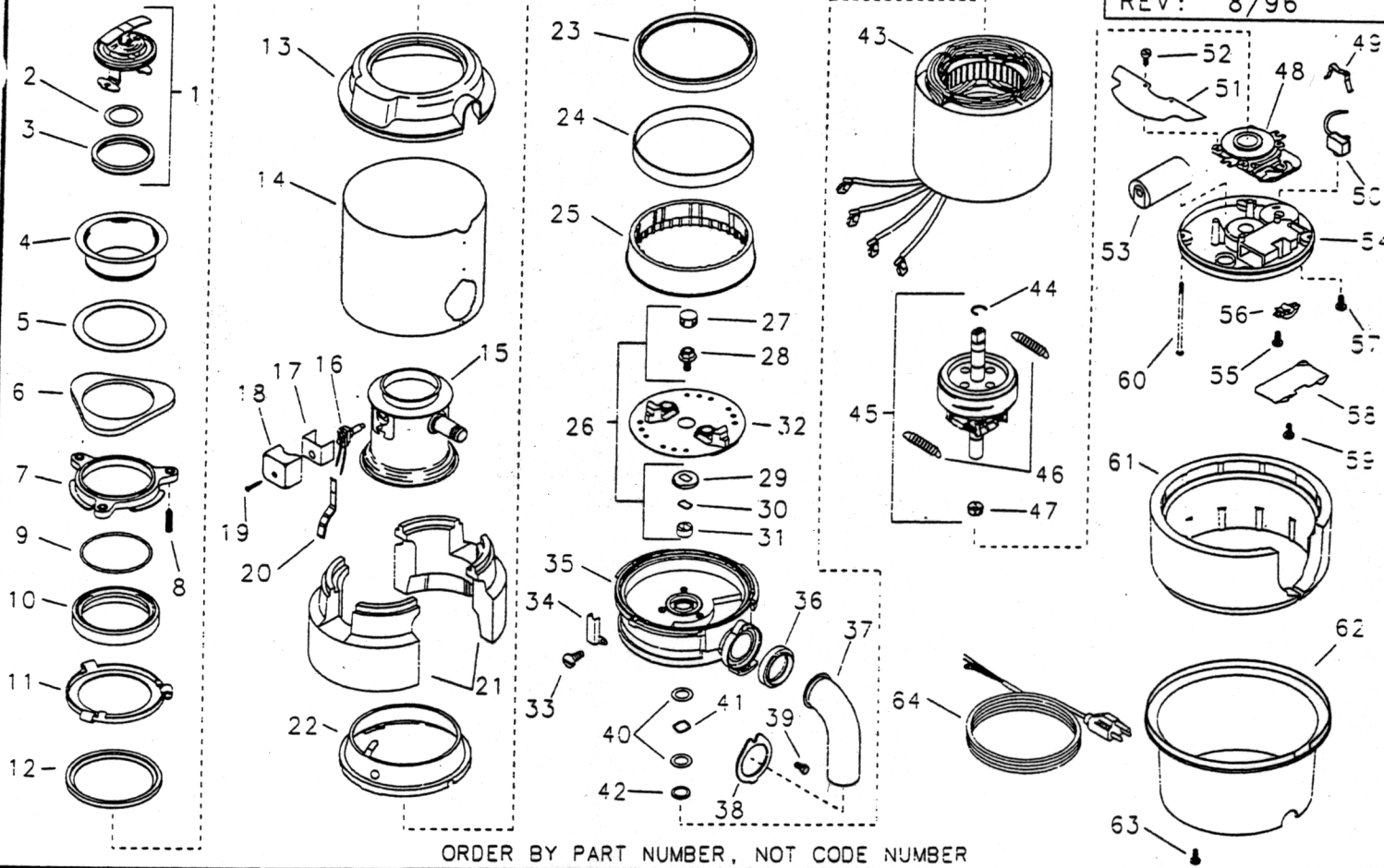
IN-SINK-ERATOR

UL
MODEL CL/LC-30
 7 YR FULL WRNTY 120v/60Hz.

START DATE
 01-18-93
 ENGINEER NUMBER
 70500

1 H.P.

REV: 8/96



ORDER BY PART NUMBER, NOT CODE NUMBER

CODE NO.	PART NO.	NO. REQ.	DESCRIPTION	CODE NO.	PART NO.	NO. REQ.	DESCRIPTION
1	1019-G	1	LOCK STOPPER ASSEMBLY (INCLUDES CODES 2 & 3)	34	1266	1	SHIELD, WIRE COVER
2	1144	1	GASKET, STOPPER (INNER)	35	9209-B	1	UPPER ENDBELL ASSEMBLY
3	1146-A	1	GASKET, STOPPER (OUTER)	36	1470	1	GASKET, TAILPIPE
4	5170-AH	1	FLANGE, STRAINER	37	2891	1	TAILPIPE
5	1160	1	SEAL, SINK FLANGE	38	5490	1	FLANGE, TAILPIPE
6	5150-E	1	FLANGE, BACKUP	39	1491	1	SCREW, TAILPIPE
7	5141	1	FLANGE, MOUNTING	40	3551	2	WASHER, THRUST
8	5147	3	SCREW, BACKUP	41	3550	1	WASHER, SPRING
9	5166	1	RING, RETAINING	42	8793	1	WASHER, CUP
10	1155	1	GASKET, MOUNTING	43	8630	1	STATOR ASSEMBLY
11	5298	1	FLANGE, BODY	44	4348	1	"C"RING
12	5299	1	GASKET, BODY	45	70488	1	SHAFT ASSEMBLY (INCLUDES CODES 40-42, 44, 46 & 47)
13	3476	1	TRIM SHELL ASSEMBLY (TOP)	46	7738	2	SPRING (CENTRIFUGAL ACTUATOR)
14	9487-D	1	TRIM BAND ASSEMBLY	47	8361	1	TRANSFER ASSEMBLY
15	3559-L	1	BODY CONTAINER ASSEMBLY (INCLUDES CODE 23)	48	4469	1	START SWITCH ASSEMBLY
16	2590-A	1	SWITCH ASSEMBLY (PUSH BUTTON)	49	3620	1	CLIP, OVERLOAD
17	4152	1	INSULATION, SWITCH COVER	50	2267-CD	1	PROTECTOR, OVERLOAD
18	2586-B	1	COVER, SWITCH	51	6618	1	SHIELD, WIRE
19	2588	1	SCREW, TAPPING (SWITCH COVER)	52	8221	4	SCREW
20	1252-A	1	BRACKET, WIRE COVER	53	5861	1	CAPACITOR
21	8323	1	INSULATION, TOP	54	9163	1	LOWER ENDFRAME ASSEMBLY (INCLUDES CODES 49 & 57)
22	1225-E	1	BODY, LOWER	55	5075	2	SCREW, BX CLAMP
23	4395	1	GASKET, SHREDDER	56	5060	1	CLAMP, BX
24	3420	1	INSULATION, SOUND (DEADENING)	57	1966	1	SCREW, GROUND
25	1248-A	1	SHREDDER, STATIONARY	58	5091-C	1	COVER, TERMINAL
26	70647	1	SLEEVE & SEAL KIT (INCLUDES CODES 27 THRU 31)	59	8221	1	SCREW, TERMINAL COVER
27	2854	1	PLUG	60	5949	4	BOLT, THRU
28	N/A	1	BOLT, HEX HEAD FLANGE	61	8322	1	INSULATION, BOTTOM
29	N/A	1	SLINGER	62	3473	1	TRIM SHELL ASSEMBLY (BOTTOM)
30	N/A	1	SEAL	63	1614	3	SCREW, TAPPING
31	N/A	1	SLEEVE	64	2272	1	PLUG AND CORD (ACCESSORY)
32	71022	1	ROTATING SHREDDER ASSEMBLY	65	71233	1	USE AND CARE BOOKLET (NOT SHOWN)
33	70734	1	SCREW, TAPPING		2610-HD	1	INSTRUCTION ASSEMBLY (NOT SHOWN) (INCLUDES CODES 36 THRU 39 & 65)