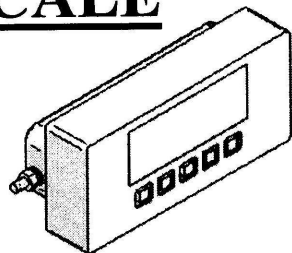
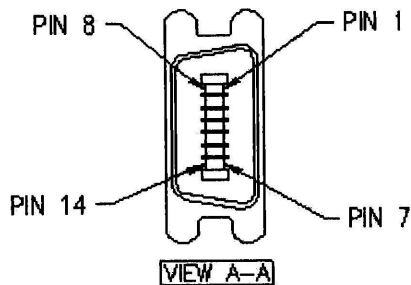


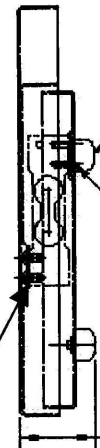
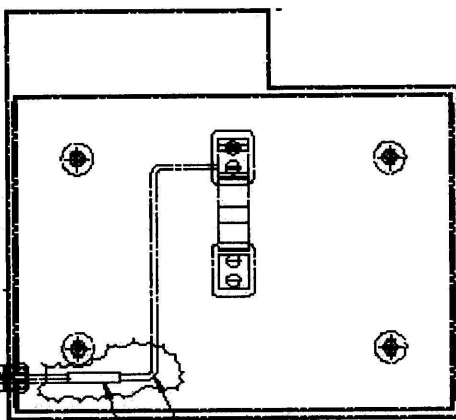


PS10 PORTION SCALE



INDICATOR DISPLAY - P/N P100

NOT SHOWN
DISPLAY OVERLAY - P/N P101
INDICATOR MOUNTING KNOBS (2) - P/N P103

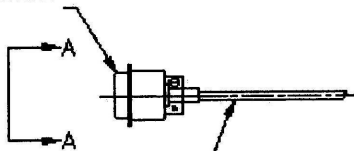


RUBBER FOOT - 4 REQ'D
P/N 190070

PAN HEAD SCREW - 2 REQ'D
P/N 190060
SECURE WITH LOCTITE #222

1.78 REF.

14 PIN CONNECTOR



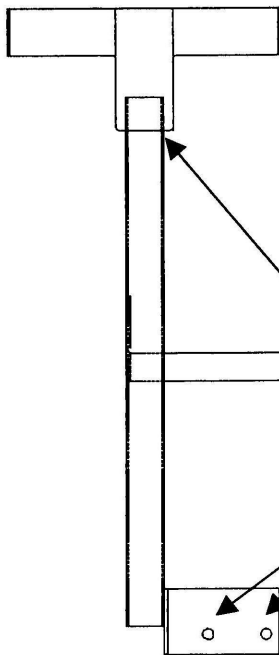
LOAD CELL CABLE
P/N P128

SEE NOTE 1

EXISTING CABLE
FROM LOAD CELL

FLAT HEAD
SCREW 2
REQ'D
P/N P124

CONNECTOR PINS	CABLE WIRE COLOR	LOAD CELL WIRE COLOR
1 & 8	RED	RED
3 & 10	BLACK	BLACK
5 & 12	GREEN	GREEN
7 & 14	WHITE	WHITE



REMOVEABLE PLATTER
P/N 190030

LOAD CELL SPACER
P/N P123

STRAIN RELIEF
P/N 190080

UPPER PLATE
P/N 190050

LOAD CELL
P/N P125

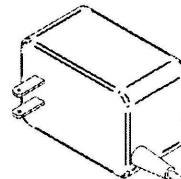
LOWER HOUSING
P/N 190020

DISPLAY BRACKET - P/N P129

DISPLAY BRACKET SCREWS (3) - P/N P131

NOTES:

1. JOIN EXTERNAL CABLE TO LOAD CELL CABLE WITH SOLDER CONNECTIONS. INSULATE EACH CONNECTION INDIVIDUALLY WITH HEAT SHRINK TUBING PER UL STD. 224 (BLACK) BUNDLE AND COVER INDIVIDUAL CONNECTIONS WITH HEAT SHRINK TUBING PER UL STD. 224



POWER SUPPLY - P/N P111