

Parts Catalog



SP30

MIXERS

MODEL: SP30

03-30-06

IMPORTANT!

TO EXPEDITE SHIPMENT OF PARTS, ALWAYS SPECIFY MODEL, REV,
PART NUMBER, AND SERIAL NUMBER OF MIXER.

GLOBE FOOD EQUIPMENT COMPANY

P.O. Box 3209

Dayton, Ohio 45401

Parts Department

Toll Free 1-800-745-6238 · Fax (937) 290-0585

E-Mail: globeinfo@globeslicers.com

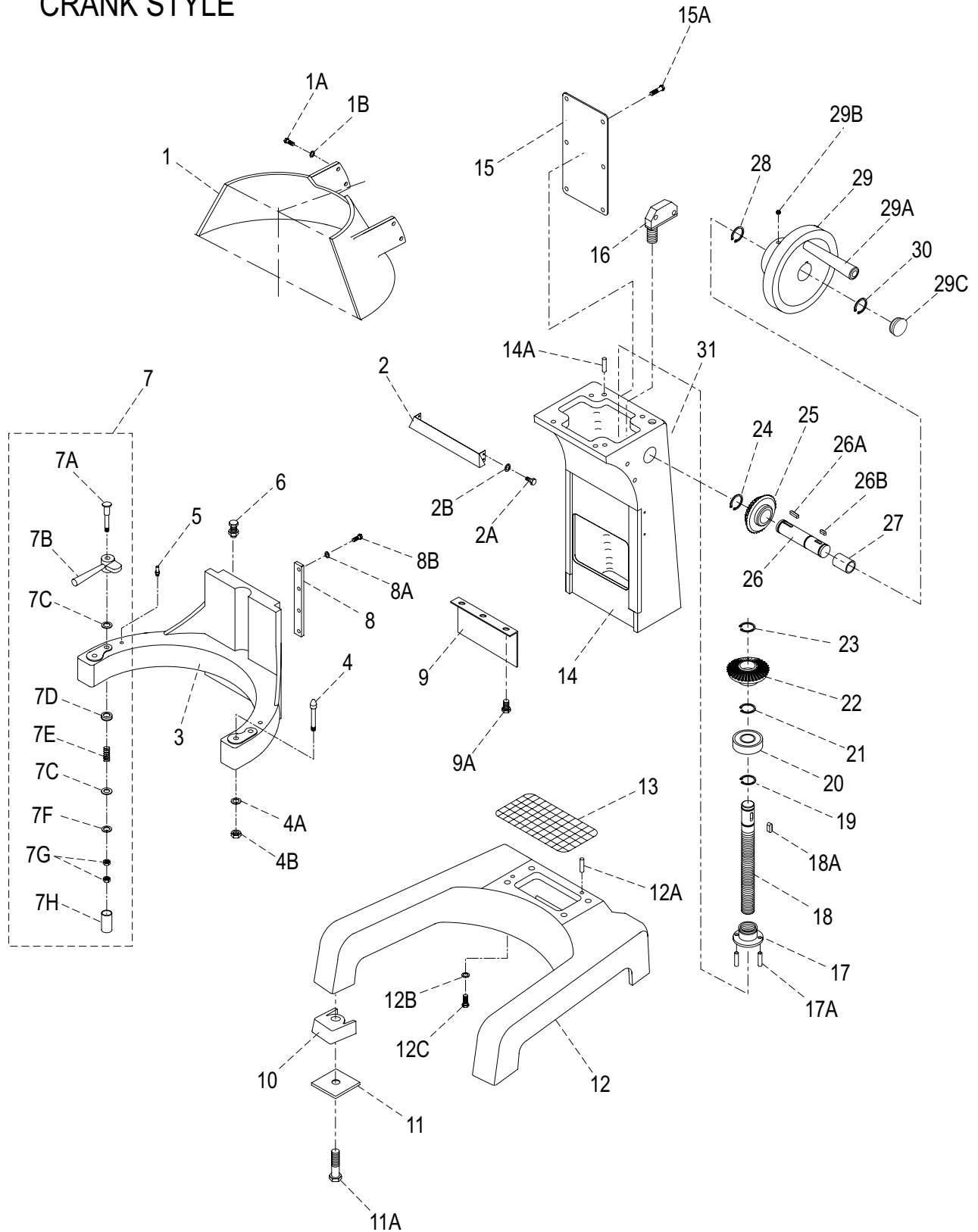
Website: www.globeslicers.com

Not for resale

TABLE OF CONTENTS

<u>BASE - HAND CRANK STYLE</u>	<u>1 - 2</u>
<u>BASE - LIFT LEVER STYLE</u>	<u>3 - 4</u>
<u>HEAD</u>	<u>5 - 6</u>
<u>HUB</u>	<u>7</u>
<u>PLANETARY</u>	<u>8</u>
<u>GEAR</u>	<u>9 -10</u>
<u>MOTOR</u>	<u>11</u>
<u>WIRING DIAGRAM SP30</u>	<u>12</u>
<u>WIRING DIAGRAM SP30P</u>	<u>13</u>
<u>SCHEMATIC SP30</u>	<u>14</u>
<u>SCHEMATIC SP30P</u>	<u>15</u>

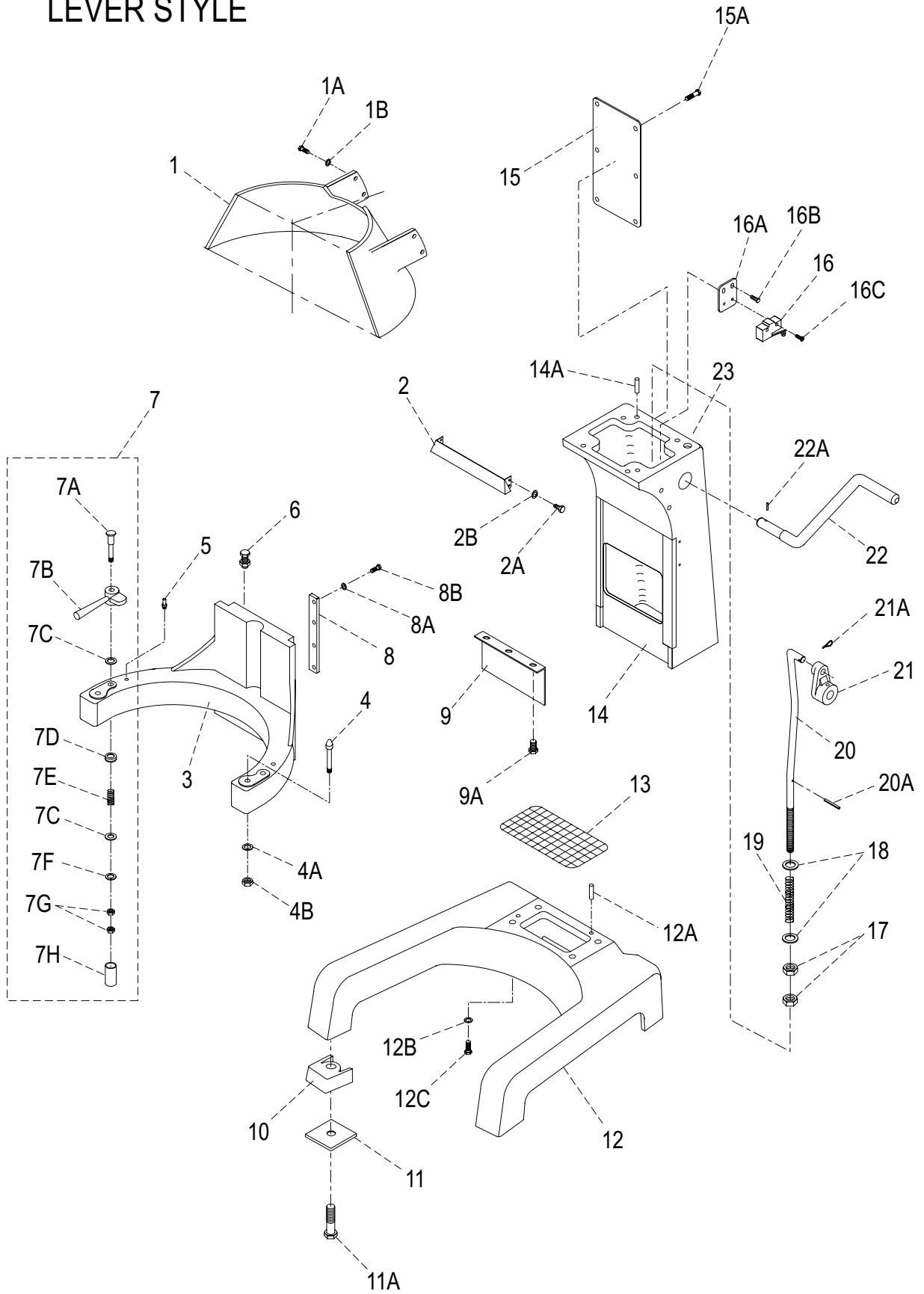
SP30 BASE CRANK STYLE



SP30 BASE
CRANK STYLE

ITEM	DESCRIPTION	PART NUMBER	QTY
1	GUARD, REAR	X30036	1
1A	SCREW	X30101	4
1B	WASHER, FLAT	X30101A	4
2	MIXER COLUMN COVER	X30102	1
2A	SCREW	X30182	3
2B	WASHER, FLAT	X30182A	3
3	BOWL CRADLE	X30034	1
4	DOWEL SCREW	X30109	2
4A	WASHER , LOCK	X30166	2
4B	NUT, STOP	X30110	8
5	BOWL CLAMP STOP PIN	X30167	2
6	TOUCH SHAFT & NUT	X30106	1
7	BOWL CLAMP, OLD STYLE (SET/2)	X30033-1	1
	BOWL CLAMP, NEW STYLE (SET/2)	X30033-2	1
7A	BOWL CLAMP SCREW	X30108	2
7B	BOWL CLAMP (SET/2)	X30033	1
7C	WASHER, FLAT	X30033A	4
7D	HARDWARE CAP RETAINER	X30033B	2
7E	SPRING	X30168	2
7F	WASHER, LOCK	X30033C	2
7G	NUT, STOP	X30169	4
7H	HARDWARE CAP	X30170	2
8	CRADLE SLIDE GUIDES	X30035	2
8A	WASHER, FLAT	X30107A	8
8B	SCREW	X30107	8
9	COVER, CRADLE, S/S	X30164	1
9A	SCREW	X30165	3
10	FRONT/REAR RUBBER FEET (SET)	X30162-163	1
11	SHIPPING WASHER	X30173	4
11A	SCREW	X30039	4
12	MIXER BASE	X30038	1
12A	PIN, COLUMN LOCATOR	X30040	2
12B	WASHER, FLAT	X30171	4
12C	SCREW	X30172	4
13	BASE SCREEN	X30037	1
14	MIXER COLUMN	X30042	1
14A	PIN, HEAD LOCATOR	X30178	2
15	PLATE, REAR COVER	X30055	1
15A	SCREW	X30056	6
16	MICROSWITCH, BOWL LIFT	X30051	1
17	SCREW SLEEVE	X30104	1
17A	PIN	X30105	2
18	BOWL LIFT SCREW	X30041	1
18A	KEY	X30174	1
19	C-RING	X30103	1
20	BALL BEARING	X30043	1
21	C-RING	X30044	1
22	OBLIQUE GEAR (30T)	X30045	1
23	C-RING	X30046	1
24	C-RING	X30049	1
25	OBLIQUE GEAR (30T)	X30048	1
26	SHAFT	X30047	1
26A	KEY	X30175	1
26B	KEY	X30177	1
27	OILLESS BEARING	X30050	1
28	C-RING	X30054	1
29	HAND WHEEL CRANK WITH HANDLE, PLASTIC	X30053	1
	HAND WHEEL CRANK WITH HANDLE, METAL	X30053M	
29A	HAND WHEEL CRANK HANDLE	X30053-1	1
29B	SET SCREW	X30053A	1
29C	HAND WHEEL CAP	X30053-2	1
30	C-RING	X30052	1
31	LABEL, HAZARDOUS VOLTAGE (NOT SHOWN)	X91008	1

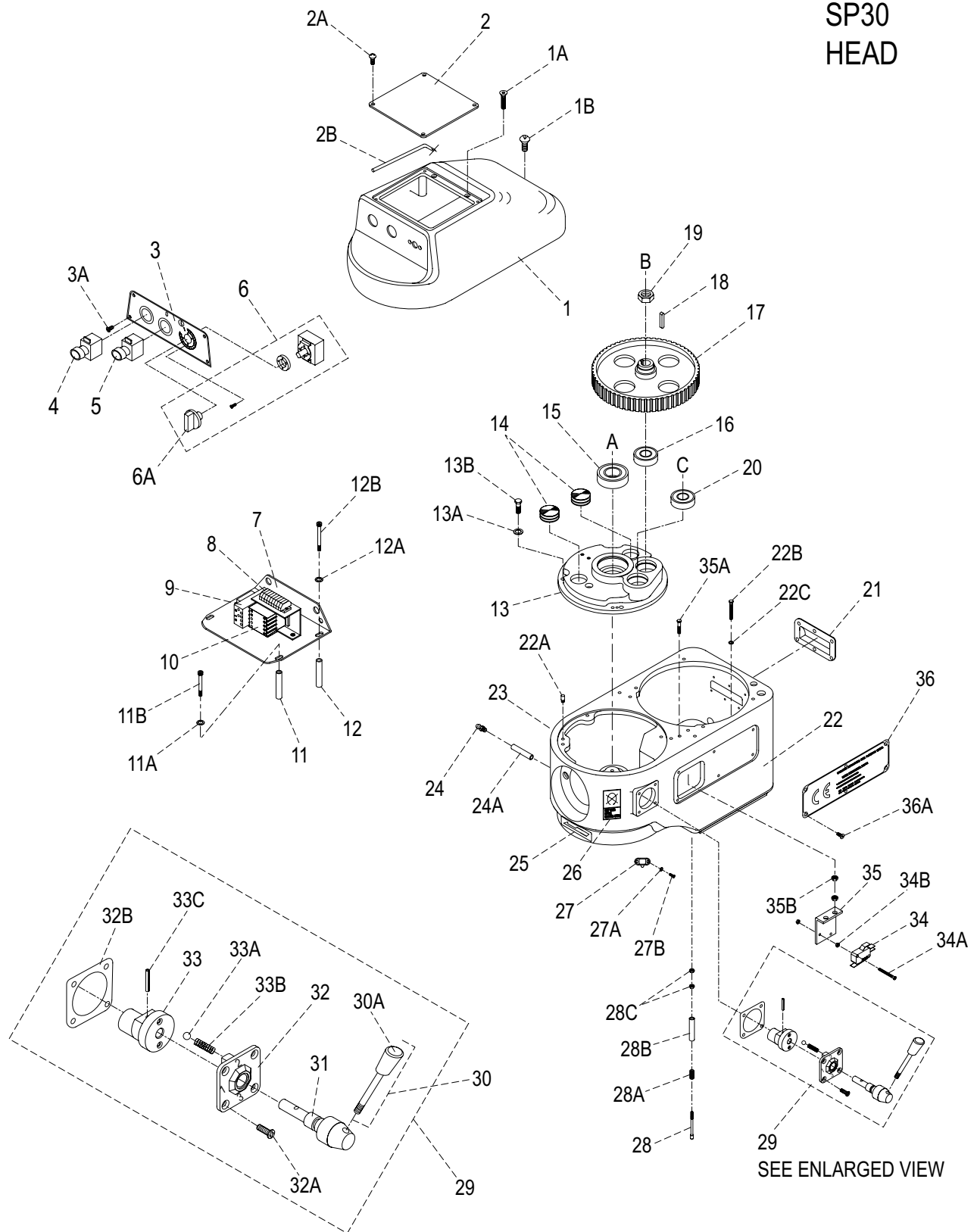
SP30 BASE LEVER STYLE



SP30 BASE
LEVER STYLE

ITEM	DESCRIPTION	PART NUMBER	QTY
1	GUARD, REAR	X30036	1
1A	SCREW	X30101	4
1B	WASHER, FLAT	X30101A	4
2	MIXER COLUMN COVER	X30102	1
2A	SCREW	X30182	3
2B	WASHER, FLAT	X30182A	3
3	BOWL CRADLE	X30034	1
4	DOWEL SCREW	X30109	2
4A	WASHER, LOCK	X30166	2
4B	NUT, STOP	X30110	8
5	BOWL CLAMP STOP PIN	X30167	2
6	TOUCH SHAFT & NUT	X30106	1
7	BOWL CLAMP, OLD STYLE (SET/2)	X30033-1	1
	BOWL CLAMP, NEW STYLE (SET/2)	X30033-2	1
7A	BOWL CLAMP SCREW	X30108	2
7B	BOWL CLAMP (SET/2)	X30033	1
7C	WASHER, FLAT	X30033A	4
7D	HARDWARE CAP RETAINER	X30033B	2
7E	SPRING	X30168	2
7F	WASHER, LOCK	X30033C	2
7G	NUT, STOP	X30169	4
7H	HARDWARE CAP	X30170	2
8	CRADLE SLIDE GUIDES	X30035	2
8A	WASHER, FLAT	X30107A	8
8B	SCREW	X30107	8
9	COVER, CRADLE, S/S	X30164	1
9A	SCREW	X30165	3
10	FRONT/REAR RUBBER FEET (SET)	X30162-163	1
11	SHIPPING WASHER	X30173	4
11A	SCREW	X30039	4
12	MIXER BASE	X30038	1
12A	PIN, COLUMN LOCATOR	X30040	2
12B	WASHER, FLAT	X30171	4
12C	SCREW	X30172	4
13	BASE SCREEN	X30037	1
14	MIXER COLUMN	X30042	1
14A	PIN, HEAD LOCATOR	X30178	2
15	PLATE, REAR COVER	X30055	1
15A	SCREW	X30056	6
16	MICROSWITCH, BOWL LIFT	X30219	1
16A	BRACKET, MICROSWITCH MOUNTING	X30216	1
16B	SCREW	X30217	2
16C	SCREW	X30218	2
17	NUT, STOP	X30215	2
18	WASHER, FLAT	X30213	2
19	SPRING	X30214	1
20	BOWL LIFT ROD	X30211	1
20A	ROLL PIN	X30212	1
21	BOWL LIFT CAM	X30210	1
21A	COTTER PIN	X30210A	1
22	BOWL LIFT ARM	X30208	1
22A	ROLL PIN	X30209	1
23	LABEL, HAZARDOUS VOLTAGE	X91008	1

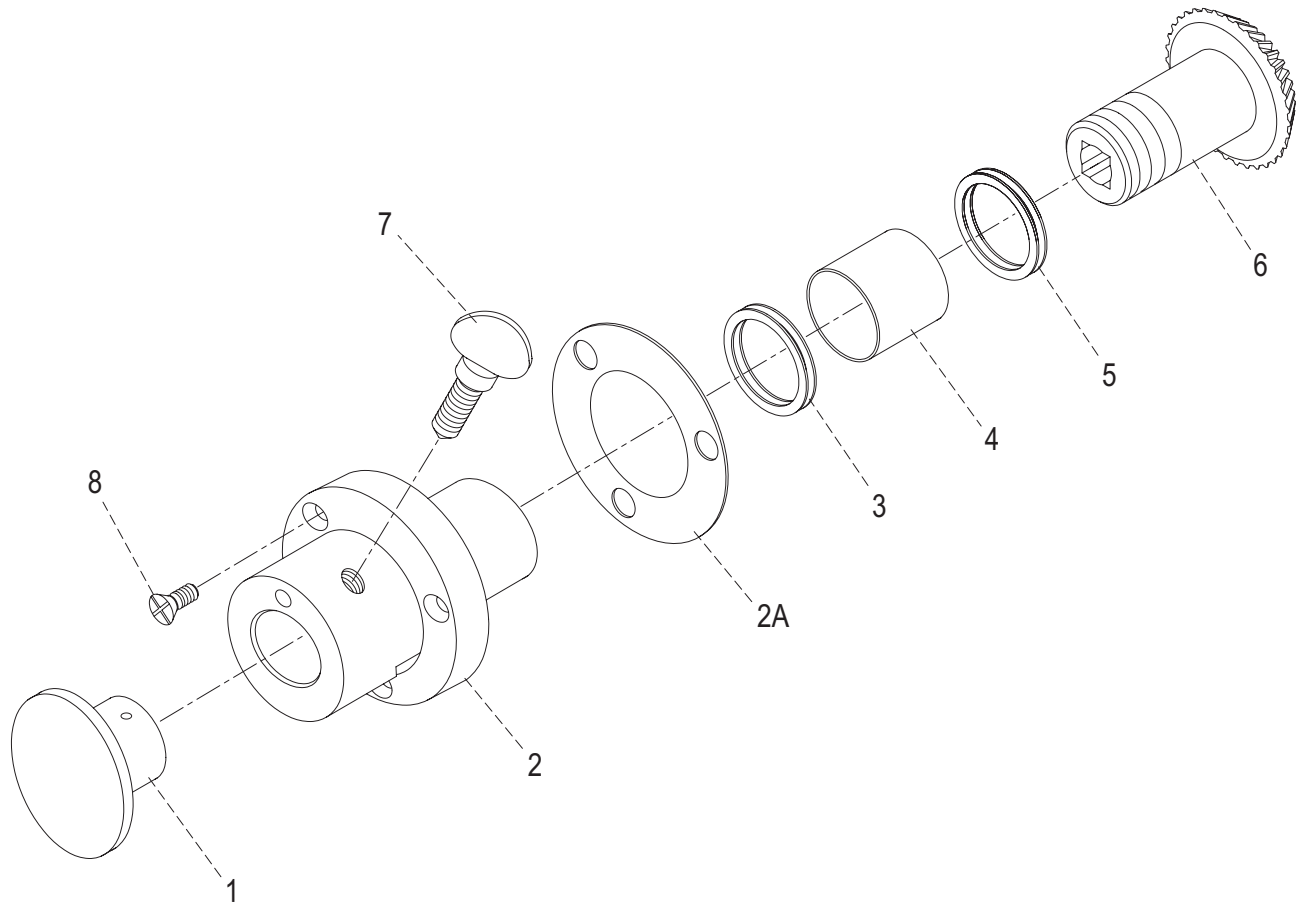
SP30 HEAD



ITEM	DESCRIPTION	PART NUMBER	QTY
1	COVER, TRANSMISSION	X30004	1
1A	SCREW	X30207	2
1B	SCREW	X30220	1
2	COVER, SWITCH BOX	X30002	1
2A	SCREW	X30001	4
2B	GASKET	X30003	1
3	CONTROL PANEL	X30005	1
3A	SCREW	X30204	6
4	EMERGENCY STOP BUTTON	X30006	1
5	START BUTTON	X30007	1
5A	BOOT, START/STOP SWITCH BUTTON (NOT SHOWN)	X30007-1	2
6	TIMER WITH KNOB	X30008	1
6A	TIMER KNOB	X30206	1
7	PLATE, ELECTRONICS MOUNTING	X30013	2
8	CONNECTING BLOCK SET	X30012	1
	CONNECTING BLOCK, 2C GRY	X30012-2G	11
	CONNECTING BLOCK END CAP	X30012-EC	1
9	OVERLOAD RELAY, 115/60/1	X30154	1
	OVERLOAD RELAY, 220/60/1	X30154P	
10	CONTACTOR, 115/60/1	X30011	1
	CONTACTOR, 220/60/1P	X30011P	
11	TUBE, SUPPORT	X30153	2
11A	WASHER, FLAT	X30153A	2
11B	SCREW	X30086	2
12	TUBE, SUPPORT	X30085	2
12A	WASHER, FLAT	X30085A	2
12B	SCREW	X30010	2
13	COVER, GEAR HOUSING	X30077	1
13A	WASHER, LOCK	X30198	4
13B	SCREW	X30197	4
14	GREASE PLUG	X30084	2
15	BALL BEARING	X30083	1
16	BALL BEARING	X30079	1
17	WHEEL, MAIN COG	X30080	1
18	KEY	X30081	1
19	NUT, STOP	X30082	1
20	BALL BEARING	X30078	1
21	PLATE, VENTILATION	X30076	1
22	TRANSMISSION CASE	X30087	1
22A	PIN, LOCATING	X30199	2
23	LABEL, LUBRICATE	X91009	1
24	GREASE FITTING	X30087-1	1
24A	GREASE TUBE	X30087-2	1
25	LABEL, ARROW	X91012	1
26	LABEL, STOP TO CHANGE GEAR	X91010	1
27	SAFETY GUARD SPRING LOCK	X30160	1
27A	WASHER, FLAT	X30184A	2
27B	SCREW	X30184	2
28	TOUCH SHAFT, BRASS	X30096	1
	TOUCH SHAFT, NYLON	X30096P	
28A	SPRING	X30095	1
28B	TUBE	X30187	1
28C	NUT	X30186	2
29	GEAR SHIFT LEVER ASSEMBLY	X30057-60	1
30	GEAR SHIFT LEVER WITH KNOB	X30057	1
30A	KNOB, GEAR SHIFT	X30057-1	1
31	SHAFT	X30058	1
32	COVER	X30059	1
32A	SCREW	X30179	4
32B	GASKET	X30059-1	1
33	SHAFT BIAS	X30060	1
33A	ROLLER	X30181	2
33B	SPRING	X30180	2
33C	PIN	X30060A	1
34	MICROSWITCH	X30063	1
34A	SCREW	X30188	2
34B	NUT	X30188A	4
35	BRACKET, MICROSWITCH	X30062	1
35A	SCREW	X30190	2
35B	NUT	X30183	4
36	PLATE, WARNING	X30066	1
36A	SCREW	X30065	6

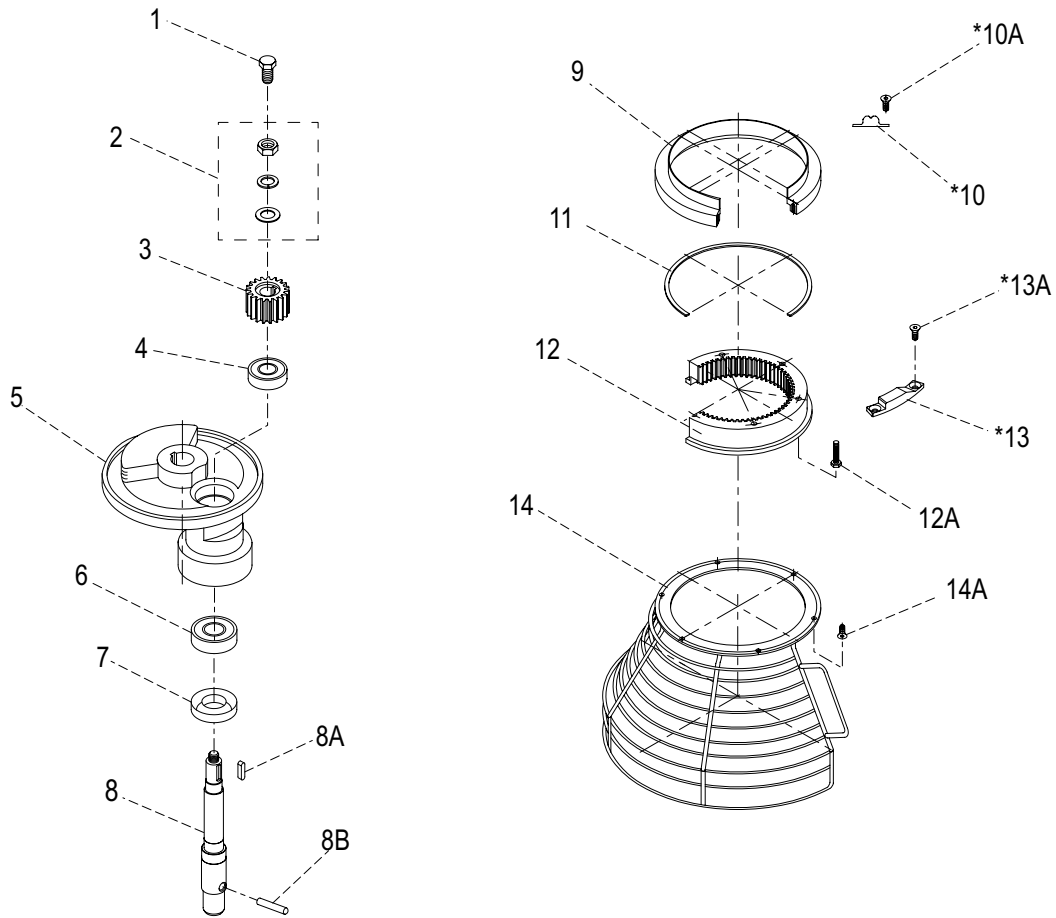
SP30
HEAD

SP30 HUB ASSEMBLY



ITEM	DESCRIPTION	PART NUMBER	QTY
1	ATTACHMENT HOLE PLUG	X30016	1
2	ATTACHMENT HUB (INCLUDES X30018 & X30200)	X30017	1
2A	GASKET	X30017-1	1
3	OIL SEAL	X30018	1
4	BEARING	X30201	1
5	THRUST WASHER	X30200	2
6	LEVEL DRIVE GEAR (35T)	X30014	1
7	THUMB SCREW	X30015	1
8	SCREW	X30202	3

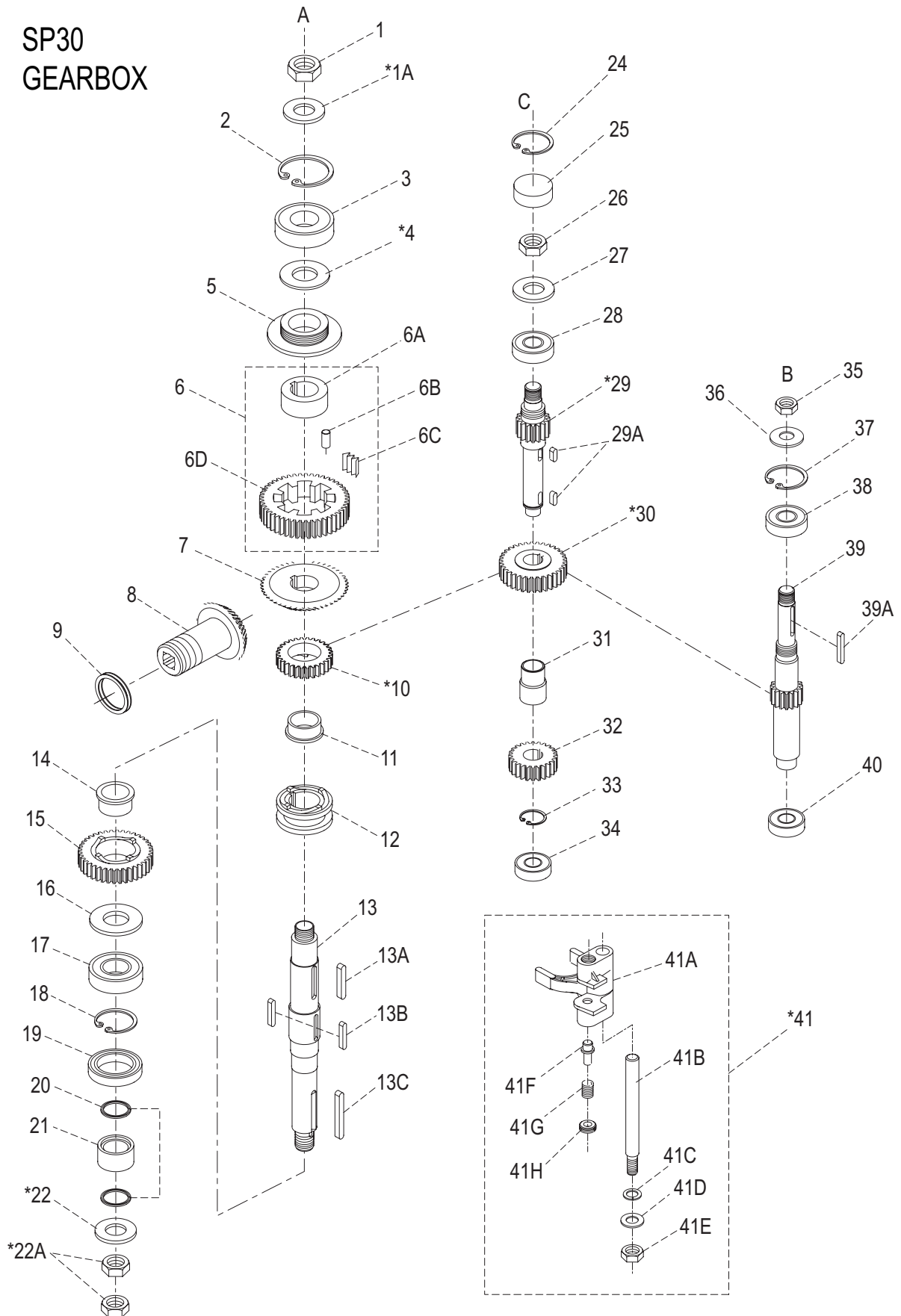
SP30 PLANETARY



ITEM	DESCRIPTION	PART NUMBER	QTY
1	SCREW (OLD STYLE SHAFT)	X30019	1
2	FLAT WASHER, LOCK WASHER AND STOP NUT	X30020	1
3	PINION, BEATER (21T)	X30021	1
4	BALL BEARING	X30022	1
5	PLANETARY SHAFT HOLDER	X30023	1
6	BALL BEARING	X30024	1
7	OIL SEAL	X30025	1
8	PLANETARY SHAFT, EXTERNAL THREAD (NEW STYLE)	X30027	1
	PLANETARY SHAFT, INTERNAL THREAD (OLD STYLE)	-	1
8A	LEVEL KEY	X30026	1
8B	PIN	X30028	1
9	SLIDE SHEATH	X30090	1
*10	SAFETY GUARD SPRING LOCK FIXTURE	X30161	1
*10A	SCREW	X30185	2
11	MAT	X30091	1
12	RING GEAR (67T)	X30092	1
12A	SCREW	X30099	6
*13	TOUCH MASS	X30098	1
*13A	SCREW	X30097	2
14	FRONT INTERLOCKING GUARD ASSY	X30093-94	1
14A	SCREW	X30100	6

* USED WITH OLD STYLE SLIDE SHEATH (METAL)

SP30 GEARBOX



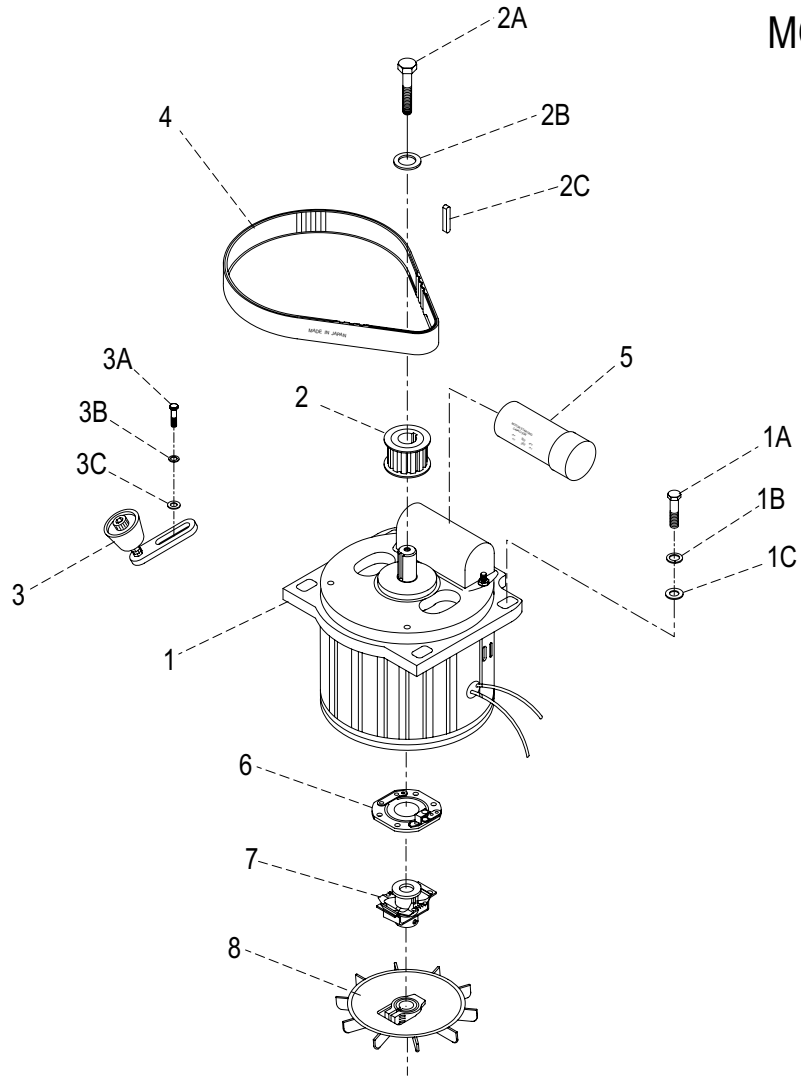
*PART CONFIGURATION MAY VARY.

SP30
GEARBOX

ITEM	DESCRIPTION	PART NUMBER	QTY
1	NUT, STOP	X30111	1
*1A	WASHER	X30111A	1
2	C-RING	X30112	1
3	BALL BEARING	X30083	1
*4	SHIM	X30083A	A/R
5	LEAD-IN OIL PAD	X30113	1
6	SLOW SPEED GEAR ASSEMBLY	X30114-117	1
6A	BUSHING	X30114	1
6B	ROLLER PIN	X30115	1
6C	SLICE SPRING	X30116	1
6D	GEAR, SLOW SPEED (52T)	-	1
7	GEAR, BEVEL (52T)	X30118	1
8	LEVEL DRIVE GEAR (35T)	X30014	1
9	THRUST WASHER	X30200	1
*10	GEAR, CLUTCH (36T) OLD STYLE	X30120-1	1
	GEAR, CLUTCH (35T) NEW STYLE	X30120-2	1
11	BUSHING, CLUTCH	X30119	1
12	SLEEVE, CLUTCH	X30133	1
13	DRIVE SHAFT	X30130	1
13A	LEVEL KEY	X30121	1
13B	LEVEL KEY	X30132	1
13C	LEVEL KEY	X30131	1
14	BUSHING, CLUTCH	X30123	1
15	GEAR, CLUTCH (45T)	X30122	1
16	HEEL	X30124	1
17	BALL BEARING	X30125	1
18	C-RING	X30126	1
19	OIL SEAL	X30128	1
20	O-RING	X30221	2
21	GUARD, OIL BUSHING	X30127	1
*22	WASHER (USED W/STOP NUT)	X30129B	1
*22A	NUT, STOP	X30129	2
*23	WASHER (NOT SHOWN, USED W/BOLT)	X30129C	1
*23A	BOLT (NOT SHOWN)	X30129A	1
24	C-RING	X30151	1
25	CAP. SHAFT	X30150B	1
26	NUT, STOP	X30152	1
27	WASHER	X30152A	1
28	BALL BEARING	X30079	1
*29	TRANSMISSION SHAFT (13T) OLD STYLE, KEYED	X30150-1	1
	TRANSMISSION SHAFT (13T) NEW STYLE, SPLINED	X30150-2	
29A	LEVEL KEY	X30149	2
*30	GEAR (29T) OLD STYLE	X30148-1	1
	GEAR (30T) NEW STYLE	X30148-2	
31	BUSHING, SPACER	X30144	1
32	GEAR (20T) OLD STYLE, KEYED	X30143-1	1
	GEAR (20T) NEW STYLE, SPLINED	X30143-2	
33	C-RING	X30141	1
34	BALL BEARING	X30140	1
35	NUT, STOP	X30147	1
36	WASHER	X30147A	1
37	C-RING	X30146	1
38	BALL BEARING	X30078	1
39	SHAFT, MASTER (15T)	X30145	1
39A	LEVEL KEY	X30081	1
*40	BALL BEARING	X30142	1
41	YOKE SHIFTER ASSEMBLY	X30134-139	1
41A	YOKE, SHIFTER	X30139	1
41B	GUIDE, ROD SHIFTER	X30135	1
41C	WASHER, LOCK	X30135A	1
41D	WASHER, FLAT	X30135B	1
41E	NUT, STOP	X30134	1
41F	PLUNGER, YOKE SHIFTER	X30138	1
41G	SPRING, YOKE SHIFTER	X30137	1
41H	SPRING, RETAINER	X30136	1

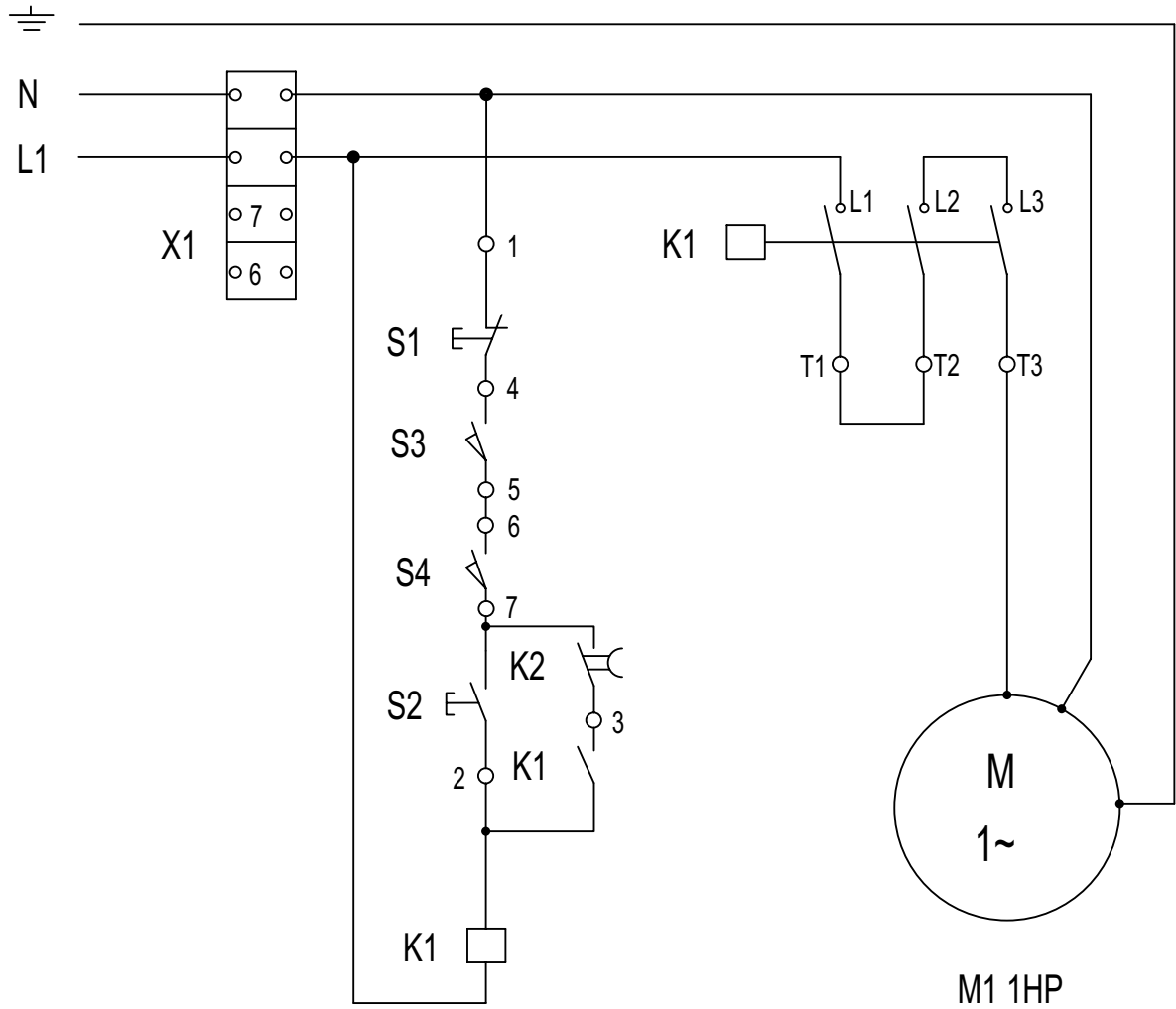
*PART CONFIGURATION MAY VARY.

SP30
MOTOR



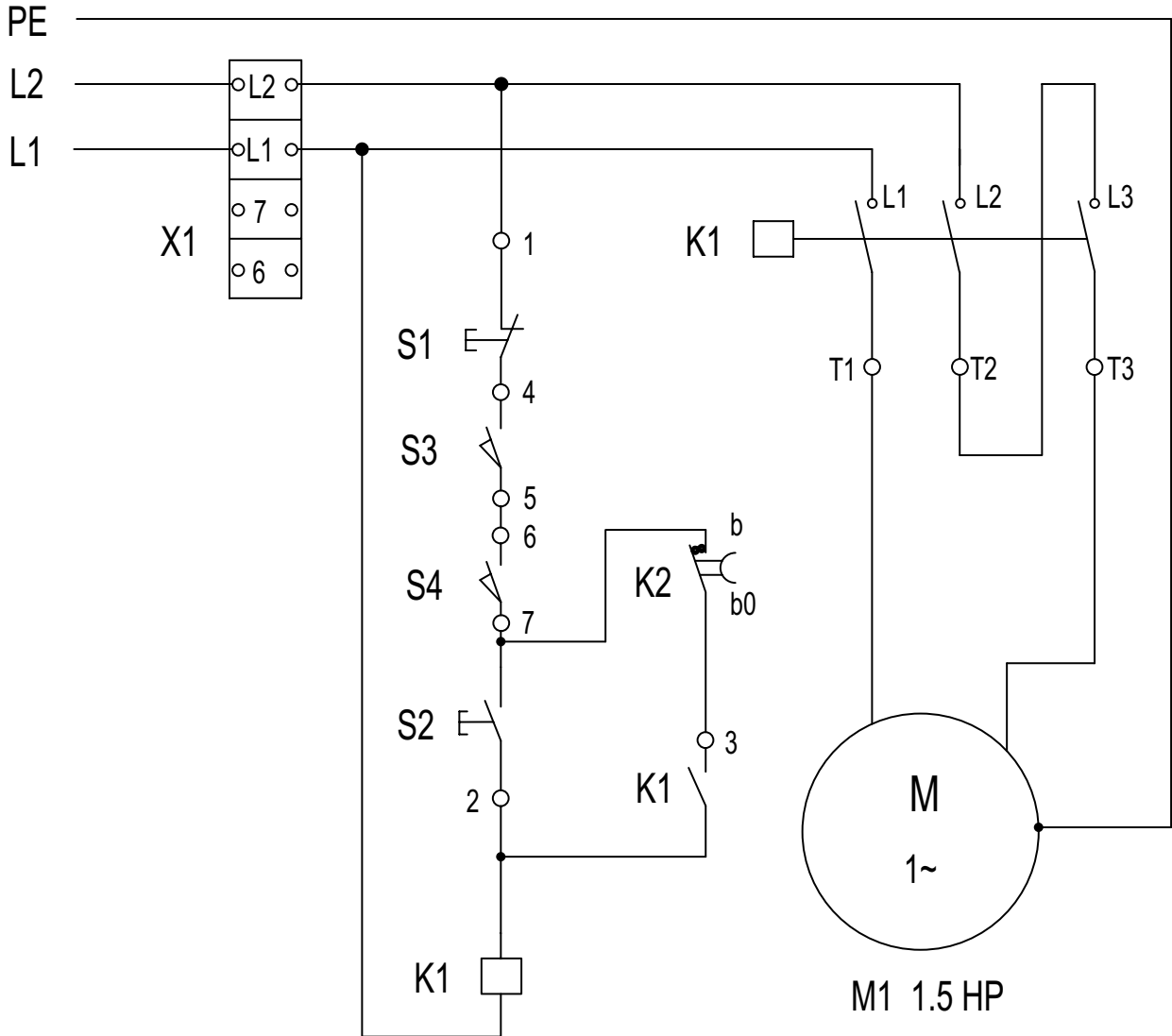
ITEM	DESCRIPTION	PART NUMBER	QTY
1	MOTOR, SP30 1HP 115/60/1	X30068	1
	MOTOR, SP30 1HP 220/60/1	X30068-2	
	MOTOR, 1.5HP 220/60/1	X30068P	
1A	SCREW	X30069	4
1B	WASHER, LOCK	X30069A	4
1C	WASHER, FLAT	X30069B	4
2	WHEEL, MOTOR COG (21T)	X30071	1
2A	SCREW	X30075	1
2B	WASHER, FLAT	X30074	2
2C	LEVEL KEY	X30073	1
3	BELT TENSIONER	X30158	1
3A	SCREW	X30196	2
3B	WASHER, LOCK	X30195	2
3C	WASHER, FLAT	X30194	2
4	COGGED BELT (S8M-800)	X30072-1	1
	COGGED BELT (S8M-880)	X30072-2	1
5	CAPACITOR, START 400Mf	X30070-1	1
6	SWITCH, PLATINUM	X30067	1
7	CLUTCH	X30064	1
8	COOLING FAN	X30061	1

ELECTRICAL DIAGRAM SP30 PLANETARY MIXER 115V Single Phase



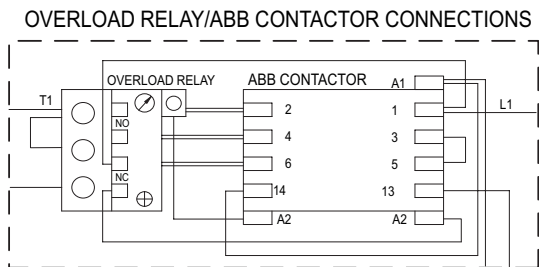
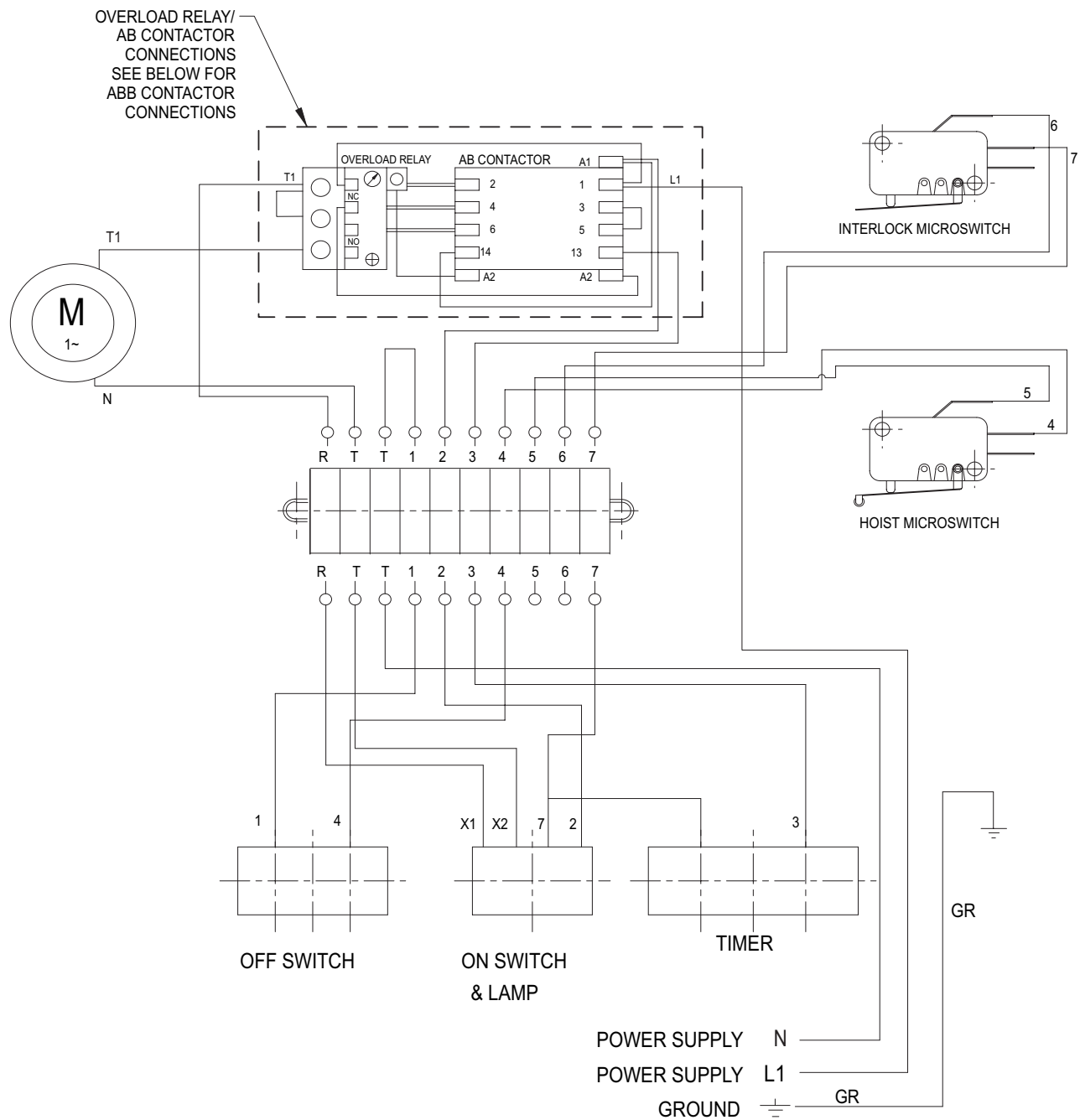
ITEM	DESCRIPTION	QTY
S1	EMERGENCY STOP BUTTON	1
S2	START BUTTON	1
S3	MICROSWITCH (BOWL LIFT)	1
S4	MICROSWITCH (INTERLOCK GUARD)	1
K1	CONTACTOR	1
K2	TIMER	1
M1	MOTOR, 1HP SINGLE PHASE 115V	1

ELECTRICAL DIAGRAM SP30 PLANETARY MIXER 220V Single Phase



ITEM	DESCRIPTION	QTY
S1	EMERGENCY STOP BUTTON	1
S2	START BUTTON	1
S3	MICROSWITCH (BOWL LIFT)	1
S4	MICROSWITCH (INTERLOCK GUARD)	1
K1	CONTACTOR	1
K2	TIMER	1
M1	MOTOR, 1.5HP SINGLE PHASE 220V	1

WIRING DIAGRAM SP30 PLANETARY MIXER 115V Single Phase



WIRING DIAGRAM SP30P PLANETARY MIXER 220V Single Phase

