



***MCO GS/GD-10-A-M, E MODELS
FOR MODELS UP TO S/N 0003CJ9999***

PARTS LIST

Toll Free Phone, (US & Canada): (800) 427-6668

Toll Free Fax, (US & Canada): (800) 361-7745

<http://www.garland-group.com>

Explanation of Serial Number Identification

Sample : 9601CJ0001

96 = Year built
(first two characters)

93	=	1993
94	=	1994
95	=	1995
96	=	1996
97	=	1997
98	=	1998
99	=	1999
00	=	2000
01	=	2001

01 = Month built
(second two characters)

01	=	January
02	=	February
03	=	March
04	=	April
05	=	May
06	=	June
07	=	July
08	=	August
09	=	September
10	=	October
11	=	November
12	=	December

CJ = manufacturers item class for
Convection Oven (ALPHA characters)

0001 = sequential number of units built that
month.
(running number from 0001 to 9999)

Explanation of Model Number

From Models up to Serial Number 0003CJ9999

Sample: $\frac{M \ C \ O - \ G \ S - \ 10 \ M}{1 \ 2 \ 3 \ 4 \ 5 \ 6 \ 7}$

Position: 1 - M - Master
2 - C - Convection
3 - O - Oven
4 - G - Gas E - Electric Unit
5 - S - Standard Depth,
(D - Deep)
6 - 10 - Single Deck ,
(20 - Stacked)
7 - M - Mechanical Controls
(E - Electronic Controls)

From Serial Number 0004CJ0001

Sample: $\frac{M \ C \ O - \ G \ S - \ 10 - \ A}{1 \ 2 \ 3 \ 4 \ 5 \ 6 \ 7}$

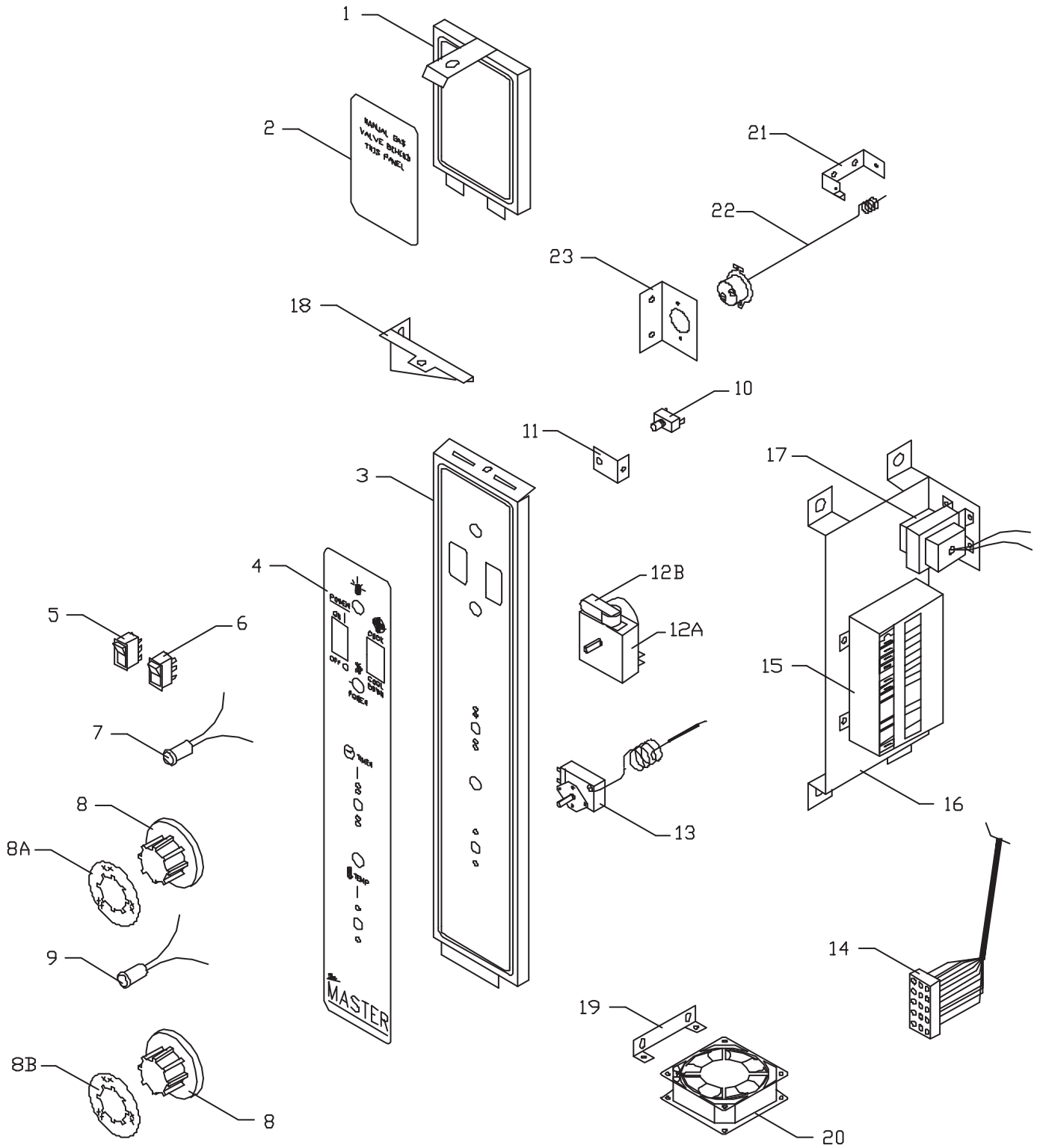
Position: 1 - M - Master
2 - C - Convection
3 - O - Oven
4 - G - Gas , E - Electric Unit
5 - S - Standard Depth,
(D - Deep)
6 - 10 - Single Deck,
(20 - Stacked)
7 - A - Dependent Doors,
300 Series 'mechanical'
controls



MCO GS/GD-10-A-M, E MODELS FOR MODELS UP TO S/N 0003CJ9999

Contents:

Manual Control Panel MCO-GS/GD-10A, M	Page 4
Manual Control Panel Components MCO-GS/GD-10A,M (300 Series)	Page 6
Digital Control Panel Components MCO-GS-10-E	Page 10
Digital Control Panel Components MCO-GS/GD-10E (400 Series)	Page 14
Burner Section Components MCO-GS/GD-10 A, M	Page 18
Dependent Door Section Components MCO-GS/GD-10 A, M, E	Page 22
Independent Door Section Components MCO-GS/GD-10 A, M, E	Page 26
Oven Components MCO-GS/GD-10 A, M, E	Page 30
Main Exterior Components MCO-GS/GD-10 A, M, E.....	Page 34
Burner Package Section MCO-GS/GD-10-MU, EU (Australia).....	Page 36
Control Option Section MCO GS/GD-10 MU, EU (Australia)	Page 38
Revision History	Page 40



Manual Control Panel-01.dwg

GARLAND PARTS IDENTIFICATION
Manual Control Panel MCO-GS/GD-10A, M
MCO Series

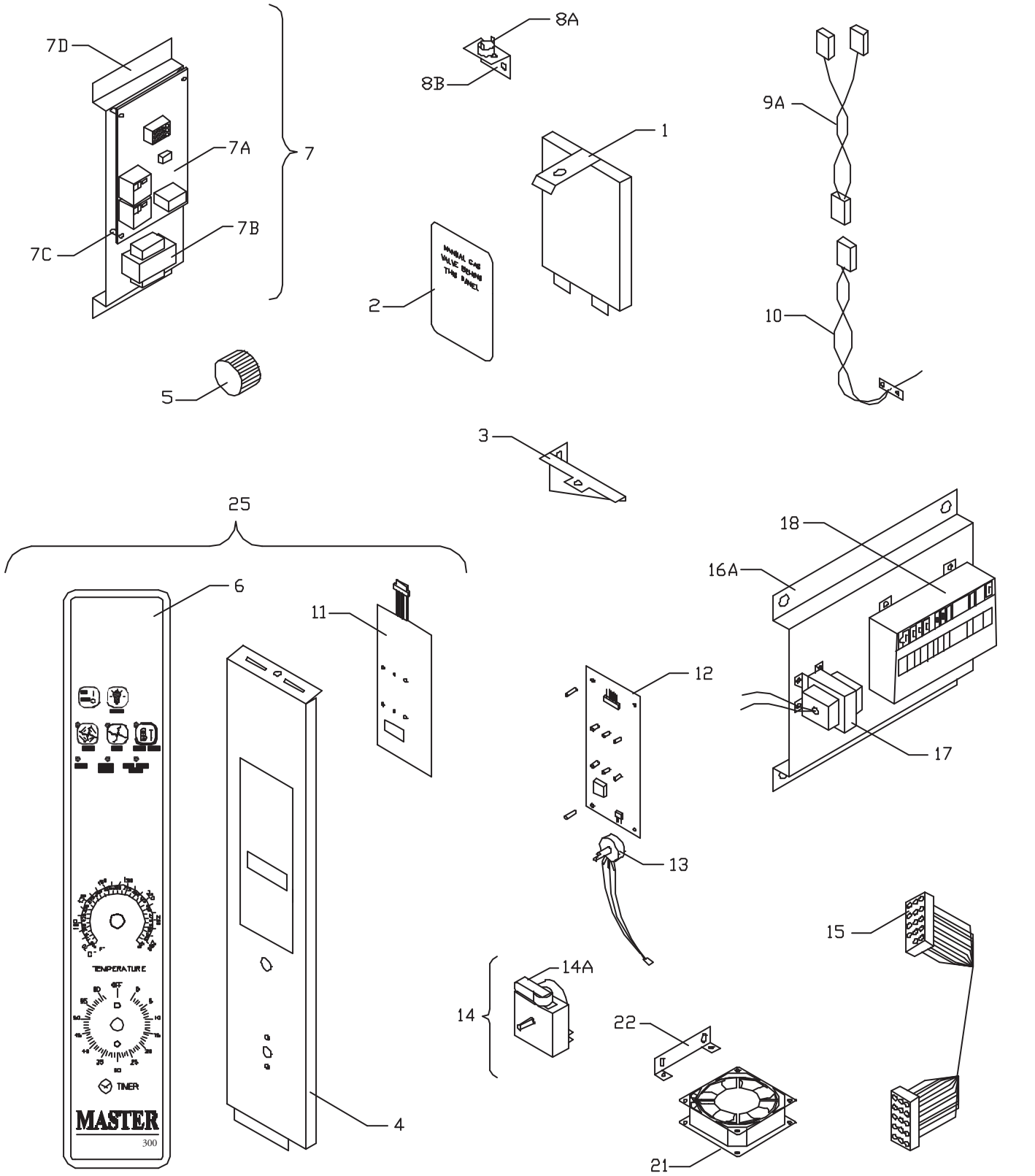
ITEM	PART #	DESCRIPTION	MODEL		
			MCO-GS/GD-10A, M		
			QTY	FROM DATE	TO DATE
1	1802599	Control Panel Top	1		
2	1789605	Overlay Top Control Panel Gas	1		
3	1802504	Control Panel Mechanical	1	Sep-95	Mar-99
4	1789603	Overlay Gas Man. Control 2 Speed	1		Mar-99
	1789604	Overlay Gas Man. Control 1 Speed	1		Mar-99
5	1019203	Rocker Power Switch 2 Pos 1 Speed On/Off	1		Mar-99
	1019207	Rocker Power Switch 3 Pos 2 Speed On/Off/On	1		Mar-99
6	1019209	Rocker Power Switch 2 Pos On/Off	1		Mar-99
7	1270000	Pilot Light Amber 28V	1		Mar-99
8	G02716-1	Dial - (Universal) Small Shaft	2		Mar-99
8A	G02725-17	Dial Insert (OFF/150F/55F Oven F	1		Mar-99
8B	1314134	Dial Insert 0 - 60 Min	1		Mar-99
9	1006489	Green Pilot Light 120V	1	Aug-95	
	G01296-3	Pilot Light Green	1	Aug-95	
10	G03053-1	Momentary Switch Push Button	1		May-96
11	1749201	Panel Restraining Bracket	1	Aug-95	Mar-99
12A	1285700	Mallory 1 HR Timer 115V 50/60H	1		
	1285701	Mallory 1 HR Timer 240V 50/60H	1		
12B	2185800	Mallory Buzzer for Timer 240V	1		
	1725102	Buzzer 230V	1		
13	1032400	Thermostat (Use G02902-1)	1		Mar-99
14	1804704	Wire Harness - Mechanical Gas	1		Mar-99
14A*	1804702	Wire Harness -Spark Ignition	1		Mar-99
14B*	1804703	Wire Harness -Power Supply	1		Mar-99
15	1815001	Honeywell Ignition Module	1		
16	1787301	Ignition Module Transformer Bracket	1		Mar-99
17	G03559-1	Transformer - 24V 120V	1		
18	1802101	Top Control Panel Mounting Bracket	1		
19	1774401	Cooling Fan Mounting Bracket	1	Jan-95	Mar-99
20	1671102	Cooling Fan 115 V.	1	Oct-99	
	1671101	Cooling Fan 208 / 240 V.	1	Sep-97	Feb-98
	1671103	Cooling Fan 208 / 240 V.	1	Feb-98	Oct-99
21	1848101	Hi - Limit Bulb Clamp	1	Jun-97	Mar-99
22	1848201	Hi - Limit	1	Jun-97	Mar-99
23	1848102	Hi-Limit Bracket	1	Jun-97	Mar-99
24*	1804713	Hi-Limit Harness	1	Jun-97	Mar-99
25*	1028402	Ground Lug	1		
26*	1028804	Snap Bushing	2		
	1028807	Snap Bushing	2		
27*	1804721	Wire Harness - 208/240 V - 2 Speed	1		Mar-99

Conversion Kit

CK4026	MCO GS/GD - 10 Digital to Manual			6-Jun-97
CK4026-A	MCO GS/GD - 10 Digital to Manual		Jul-97	
CK4028	MCO GS/GD - 10 Digital to Manual 240V			

* NOT ILLUSTRATED

RECOMMENDED STOCK PARTS



Manual Control Panel -02.dwg

GARLAND PARTS IDENTIFICATION

Manual Control Panel Components MCO-GS/GD-10A,M (300 Series)

MCO Series

ITEM	PART #	DESCRIPTION	MODEL
			MCO-GS/GD-10A,M QUANTITY
1	1802599	Control Panel Top	1
2	1835905	Overlay Top Control Panel (Summit)	1
3	1802101	Top Control Panel Mounting Bracket	1
4	1946692	Control Panel Only 300 Series Only	1
5	1765802	Fluted Knob W/2 Set Screws	2
6	1908513	Overlay W/Lite MASTER 300 300 Series only	1
	1908514	Overlay Wo/Lite MASTER 300 300 Series Only	1
7	1917099	Relay Board Assy 120V Includes 7A, 7B, 7C & 7D	1
	1917098	Relay Board Assy 208-240V Includes 7A, 7B, 7C & 7D	1
7A	1916901	Relay Board	1
7B	1917101	Transformer 120V	1
	1917102	Transformer 208-240V	1
7C	1767901	Teflon Spacers	4
7D	1916801	Relay Board Assy Bracket	1
8A	1781302	Hi Limit	1
8B	1910901	Hi Limit Bracket	1
9A	1842902	Probe Interconnect Harness	1
9B*	1841701	Thermocouple Junction Box	1
10	1842901	Flange Mount Oven Probe (Rear Mount)	1
11	1911701	Touch Key Pad To Replace Item # 6 Also	1
12	1905701	Digital Control 300 Series Only	1
13	1911801	Potentiometer	1
14	1285700	Mallory 1 HR Timer 115V 50/60H	1
	1285701	Mallory 1 HR Timer 240V 50/60H	1
14A	2185800	Mallory Buzzer for Timer 240V	1
	1725102	Buzzer 230V	1
15	1804725	Main Wire Harness	1
15A*	1804726	Harness - Redun. V / Ignition Module	1
15B*	1905901	Harness - Control / Relay Brd.	1
15C*	1804727	Harness Door Micro Switch	1
16A	1911201	Transformer & Ign. Mod. Bracket	1
	1787301	Ignition Module Transformer Bracket ARBY'S Only	1
16B*	1787302	Component Bracket Slide	1
16C*	1911301	Relay Bracket Side	1
16D*	1911302	Bracket Slide	1
17	G03559-1	Transformer - 24V 120V	1
	1636000	Transformer - 24V (208 / 240V)	1
18	1815001	Honeywell Ignition Module	1
19*	1917801	Panel - Right Side, Black	1
20*	1917901	Panel - Control Area Back	1
21	1918201	Cooling Fan - 110MM, 115V	1
	1918202	Cooling Fan 208V / 240V	1

ALL THE ABOVE PARTS ARE USED WITH THE START DATE OF MARCH - 1999

* NOT ILLUSTRATED

RECOMMENDED STOCK PARTS

GARLAND PARTS IDENTIFICATION
Manual Control Panel Components MCO-GS/GD-10A,M (300 Series)

MCO Series

ITEM	PART #	DESCRIPTION	MODEL
			MCO-GS/GD-10A,M
			QUANTITY
22	1774401	Cooling Fan Mounting Bracket	1
23*	1918002	Air Duct Deep	1
	1918001	Air Duct Standard	1
24*	1028402	Ground Lug	1

Control Panel Kit Available

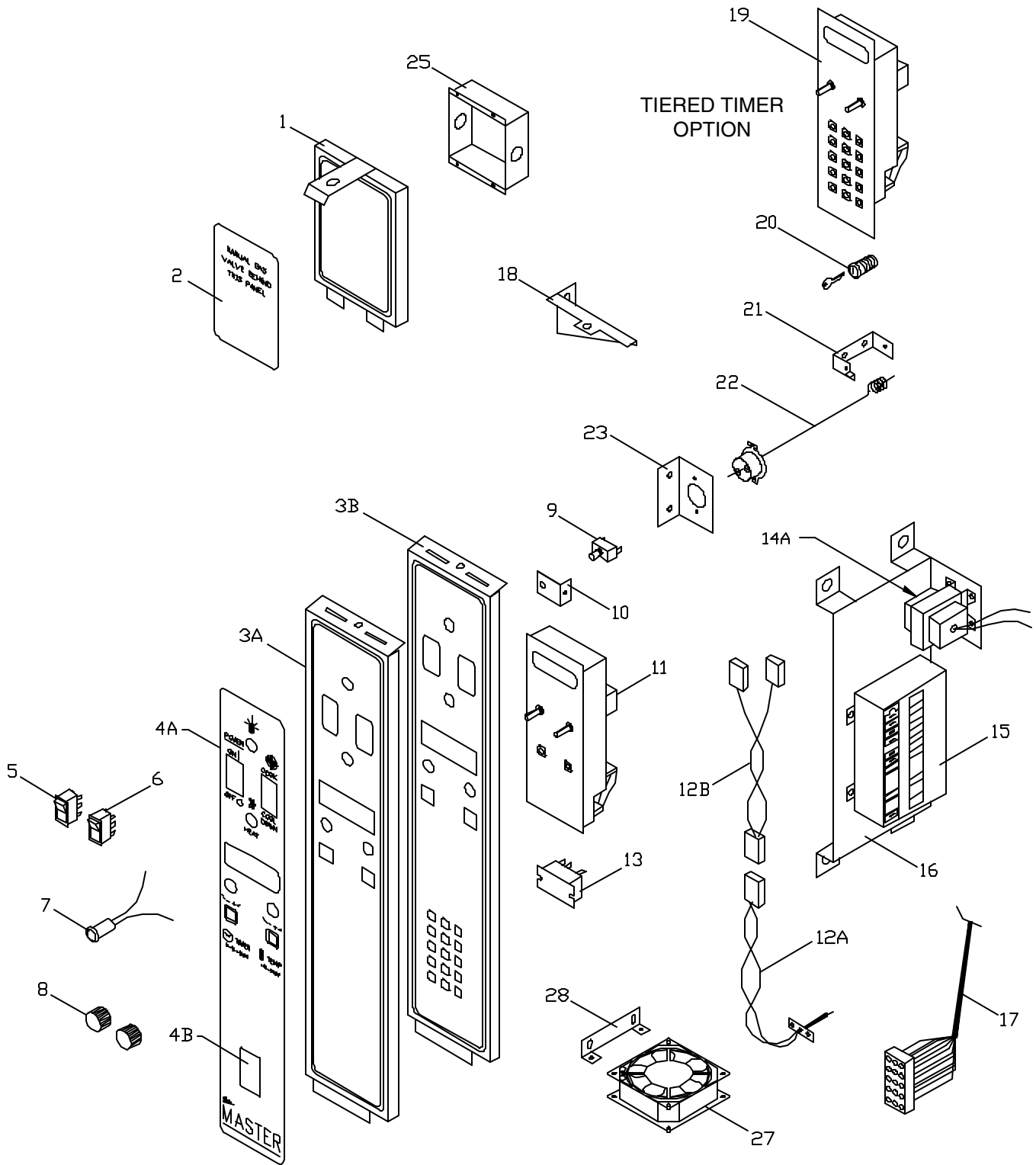
25	1952894	Panel Assembly - 300N Keypad MCO (W/O Light) Includes Items 4, 6, & 11	
	1952893	Panel Assembly - 300L Keypad MCO (W/ Light) Includes Items 4, 6 & 11	

ALL THE ABOVE PARTS ARE USED WITH THE START DATE OF MARCH - 1999

* NOT ILLUSTRATED

RECOMMENDED STOCK PARTS

NOTES



Digital Control Panel-01.dwg

GARLAND PARTS IDENTIFICATION
Digital Control Panel Components MCO-GS-10-E
MCO Series

ITEM	PART #	DESCRIPTION	MODEL		
			MCO-GS/GD-10E		
			QTY	FROM DATE	TO DATE
1	1802599	Control Panel Top	1		
2	1789605	Overlay Top Control Panel Gas	1		
3A	1802597	Control Panel COM6000	1	Sep-95	Mar-99
3B	1802598	Control Panel Tiered Timer	1	Nov-89	Mar-99
4A	1789601	Overlay Gas COM6000 2 Speed	1		Mar-99
	1789602	Overlay Gas COM6000 1 Speed	1		Mar-99
	1789607	Overlay Tiered Timer - 15 Button	1	Nov-89	Mar-99
4B	1782001	Instruction Label			
5	1019203	Rocker Power Switch 2 Pos 1 Speed On/Off	1		Mar-99
	1019207	Rocker Power Switch 3 Pos 2 Speed On/Off/On	1		Mar-99
6	1019209	Rocker Power Switch 2 Pos On/Off	1		Mar-99
7	1270000	Pilot Light Amber 28V	1		Mar-99
8	1720501	Knob	2	Aug-95	Mar-99
9	G03053-1	Momentary Switch Push Button	1		Mar-99
10	1749201	Panel Restraining Bracket	1		Mar-99
11	1517706	Gas/Electrical MCO Control NLA – Use Kit Below	1	Jun-95	Mar-99
	4518889	Controller Kit 115V Gas	1		
	4518902	Controller Kit 208/240V Electric	1		
	1623403	Control - ULT-2 Key Gas	1		Jun-95
12A	9006800	Sensor Probe 5" W/36" Teflon	1		Feb-97
	1842901	Flange Mount Oven Probe (Rear Mount)	1	Feb-97	
12B	1842902	Probe Interconnect Harness	1	Feb-97	
13	1771601	Relay 120V 2 Pole	1	Aug-95	Mar-99
	1771602	Relay 240V 2 Pole	1	Aug-95	Mar-99
14A	G03559-1	Transformer - 24V 120V	1		
14B*	1030801	Transformer 240V .15KVA (Hi Voltage Gas Units)	1		Mar-99
14C*	1030802	Transformer 208V .15KVA (Hi Voltage Gas Units)	1		Mar-99
15	1815001	Honeywell Ignition Module	1		
16	1787301	Ignition Module Transformer Bracket	1		Mar-99
17	1804701	Wire Harness - COM6000	1		Mar-99
	1804703	Wire Harness - Power Supply	1		Mar-99
	1804706	Wire Harness - Tiered Timer	1		Mar-99
18	1802101	Top Control Panel Mounting Bracket	1		
19	1665200	Tiered Timer - 15 Button	1	Nov-89	Mar-99
20	1516600	Key Lock W/Backing Nut - Tiered Timer	1		Mar-99
21	1848101	Hi - Limit Bulb Clamp	1	Jun-97	Mar-99
22	1848201	Hi - Limit	1	Jun-97	Mar-99
23	1848102	Hi-Limit Bracket	1	Jun-97	Mar-99
24*	1804713	Hi-Limit Harness	1	Jun-97	Mar-99
25	1841701	Thermocouple Junction Box	1	Feb-97	
26*	1028804	Snap Bushing	2		
	1028807	Snap Bushing	2		
27	1671102	Cooling Fan 115 V.	1		Oct-99
	1671101	Cooling Fan 208 / 240 V.	1	Sep-97	Feb-98
	1671103	Cooling Fan 208 / 240 V.	1	Feb-98	Oct-99

* NOT ILLUSTRATED

RECOMMENDED STOCK PARTS

GARLAND PARTS IDENTIFICATION
Digital Control Panel Components MCO-GS-10-E

MCO Series

ITEM	PART #	DESCRIPTION	MODEL		
			MCO-GS/GD-10E		
			QTY	FROM DATE	TO DATE
28	1774401	Cooling Fan Mounting Bracket	1	Jan-95	Mar-99

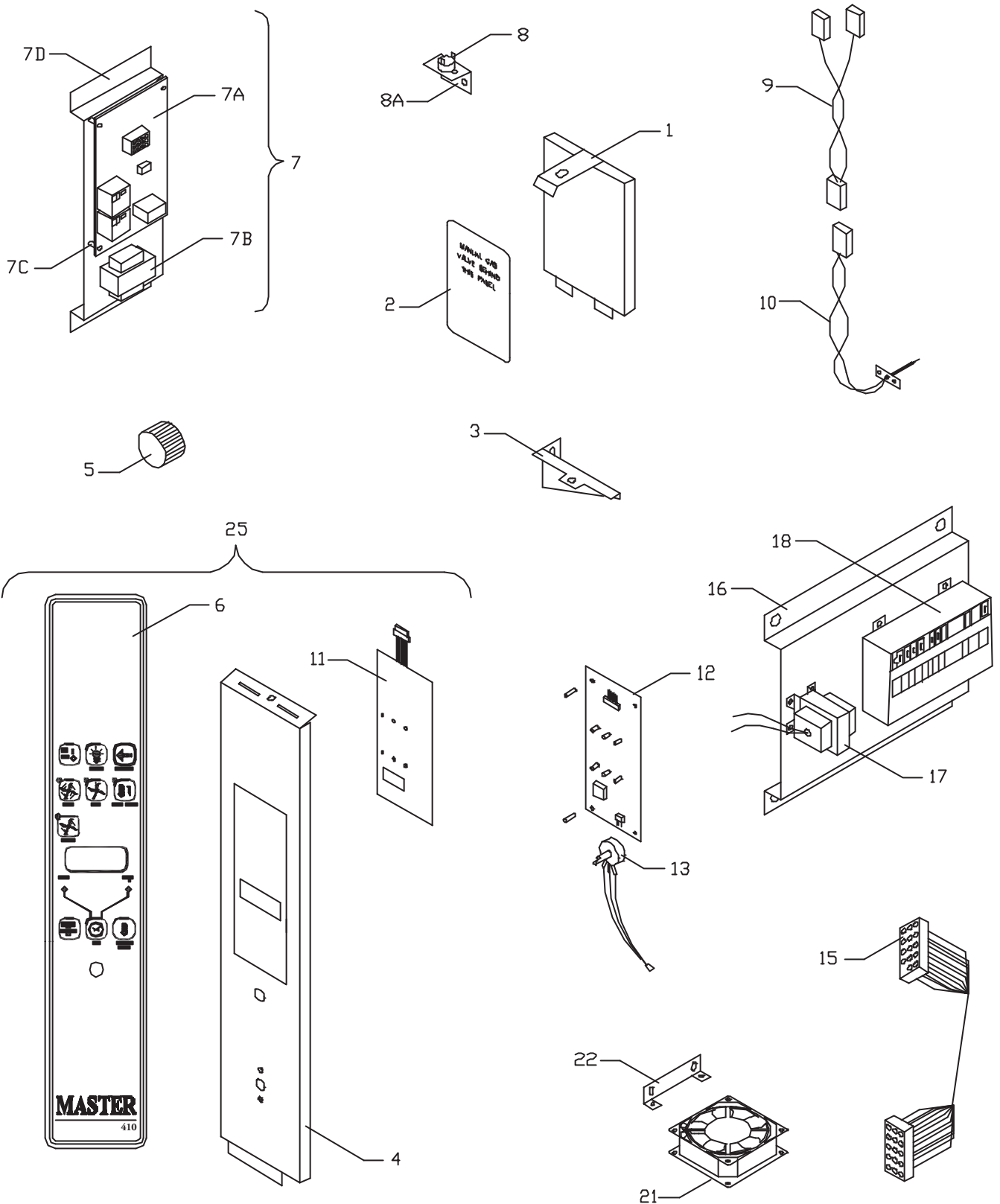
Conversion

CK4025	MCO GS/GD -10 - Manual To Electronic		Jun-95	Mar-99
--------	--------------------------------------	--	--------	--------

* NOT ILLUSTRATED

RECOMMENDED STOCK PARTS

NOTES



Digital Control Panel-02.dwg

GARLAND PARTS IDENTIFICATION
Digital Control Panel Components MCO-GS/GD-10E (400 Series)

MCO Series

ITEM	PART #	DESCRIPTION	MODEL
			MCO-GS/GD-10E QUANTITY
1	1802599	Control Panel Top	1
1A*	1808601	Top Control Panel Mounting Bracket	1
2	1789605	Overlay Top Control Panel Gas	1
3	1802101	Top Control Panel Mounting Bracket	1
4	1946691	Control Panel Only 400 Series Only	1
5	1720502	Control Knob 400 Series Only	1
6	1908501	Overlay W/ Lite MASTER 410 400 Series Only	1
	1908502	Overlay Wo/Lite MASTER 410 400 Series Only	1
	1908503	Overlay W/ Lite MASTER 450 400 Series Only	1
	1908504	Overlay Wo/Lite MASTER 450 400 Series Only	1
	1908505	Overlay W/ Lite MASTER 455 400 Series Only	1
	1908506	Overlay Wo/Lite MASTER 455 400 Series Only	1
7	1917099	Relay Board Assy 120V Includes 7A, 7B, 7C, & 7D	1
	1917098	Relay Board Assy 208-240V Includes 7A, 7B, 7C, & 7D	1
7A	1916901	Relay Board	1
7B	1917101	Transformer 120V	1
	1917102	Transformer 208-240V	1
7C	1767901	Teflon Spacers	4
7D	1916801	Relay Board Assy Bracket	1
8	1781302	Hi Limit	1
8A	1910901	Hi Limit Bracket	1
9	1842902	Probe Interconnect Harness	1
9A*	1841701	Thermocouple Junction Box	1
10	1842901	Flange Mount Oven Probe (Rear Mount)	1
11	1911701	Touch Key Pad	1
12	1905702	Fastron Control - Digital 410 Model 400 Series Only	1
	1905703	Fastron Control - Digital 450 Model 400 Series Only	1
	1905704	Fastron Control - Digital 455 Model 400 Series Only	1
13	1911601	Encoder 400 Series Only	1
14*	1906004	Core Probe (Meat Probe) 455 Model Only 400 Series Only	1
14A*	1905902	Harness Core Probe (Meat Probe) 45+ 400 Series Only	1
15	1804725	Main Wire Harness	1
15A*	1804726	Harness - Redun. V. / Ignition Module	1
ALL THE ABOVE PARTS ARE USED WITH THE START DATE OF MARCH - 1999			

* NOT ILLUSTRATED

RECOMMENDED STOCK PARTS

GARLAND PARTS IDENTIFICATION
Digital Control Panel Components MCO-GS/GD-10E (400 Series)

MCO Series

ITEM	PART #	DESCRIPTION	MODEL
			MCO-GS/GD-10E
			QUANTITY
15B*	1905901	Harness - Control / Relay Board	1
15C*	1804727	Harness Door Micro Switch	1
16	1911201	Transformer & Ign. Mod. Bracket	1
	1787301	Ignition Module Transformer Bracket ARBY'S Only	1
16A*	1787302	Component Bracket Slide	1
16B*	1911301	Relay Bracket Slide	1
16C*	1911302	Bracket Slide	1
17	G03559-1	Transformer - 24V 120V	1
	1636000	Transformer - 24V/240V	1
18	1815001	Honeywell Ignition Module	1
19*	1917801	Panel - Right Side, Back	1
20*	1917901	Panel - Control Area, Back	1
21	1918201	Cooling Fan - 110MM, 115V	1
	1918202	Cooling Fan 208V / 240V	1
22	1774401	Cooling Fan Mounting Bracket	1
23*	1918002	Air Duct Deep	1
	1918001	Air Duct Standard	1
24*	1028402	Ground Lug	1

Control Panel Kit Available

25	1952899	Panel Assembly - 410 Keypad MCO (W/Light) Included Items 4, 6, & 11	
	1952898	Panel Assembly - 450 Keypad MCO (W/Light) Included Items 4, 6, & 11	
	1952897	Panel Assembly - 455 Keypad MCO (W/Light) Included Items 4, 6, & 11	

ALL THE ABOVE PARTS ARE USED WITH THE START DATE OF MARCH - 1999

* NOT ILLUSTRATED

RECOMMENDED STOCK PARTS

NOTES

GARLAND PARTS IDENTIFICATION
Burner Section Components MCO-GS/GD-10 A, M, E
MCO Series

ITEM	PART #	DESCRIPTION	MODEL		
			MCO-GS/GGD-10 A, M, E		
			QTY	FROM DATE	TO DATE
1A	1800901	Venturi Plate 40 K BTU	1		Sep-99
1B	1800902	Venturi Plate 60 K BTU	1		Feb-97
1C	1800903	Venturi Plate 60K / 80K K BTU	1	Feb-97	
2	1801298	Burner Mounting Bracket RT S/W	1		
3	1814601	Burner Pkg Mounting Bracket	2		
4	1095499	Straight Connector 3/8 x 7/16 CC	2		
5	1004845	Reducer Coupling 1/2 X 3/8	1		
6	1811101	Coupling 1/4 CC X 1/4 CC (standing pilot only)	1	Sep-95	
7	1784401	Manifold Pipe	1		
8	1804348	Natural Orifice 80K BTU (.078") Use @ 40K (as required)	2		Sep-99
	1804348	Natrual Orifice 80K BTU (.078") Use @ 60K (as required)	3		Feb-97
	1804348	Natural Orifice 80K BTU (.078") Use @ 80K (as required)	4		
	1804350	#50 - Natural Orifice Use @ 60K (as required)	4	Feb-97	
	1804355	#55 - LP Burner Orifice Use @ 40K (as required)	2		Sep-99
	1804355	#55 - LP Burner Orifice Use @ 60K (as required)	3		Feb-97
	1804355	#55 - LP Burner Orifice Use @ 80K (as required)	4		
	1804356	#56 - LP Burner Orifice Use @60K (as required)	4	Feb-97	
9	1007300	1/8 Steel Pipe Plug (as required)			
10	1801299	Burner Mounting Bracket LT S/W	1		
11A	1801103	Pilot Mounting Bracket 40K	1	Jun-95	Dec-96
	1841102	Pilot Mounting Bracket / Grease Shield 40 K	1	Dec-96	Sep-99
	1801102	Pilot Mounting Bracket	1	Jun-95	Dec-96
	1841101	Pilot Mounting Bracket / Grease Shield	1	Dec-96	May-97
11B	1847699	Pilot Mtg Brk/Cover S/W 60K 80K	1	May-97	
11C	1847602	Carry Over Shield (as required)		May-97	
12	1814901	Honeywell Pilot Natural	1		
	1814902	Honeywell Pilot LP	1		
13	GM 308	1/4" Pilot Tubing 40,60,80 K Sold By The Foot	1		
	M 125	1/4" Compression Nut - Manifold Side	2		
	M 124	1/4" Ferrule - (Manifold Side)	2		
14	1815002	Hi Tension Ignition Wire	1	Aug-95	
15	1803501	Inshot Burner Use @ 40K (As Required)	2		Sep-99
	1803501	Inshot Burner Use @ 60K (As Required)	3		Feb-97
	1803501	Inshot Burner Use @ 60K & 80K (As Required)	4		
16	1786801	Burner Rest	1		
17	1004849	Bell Reducer 3/4 To 1/2	1		
18	1786499	Tailpipe W/A 1/2" x 25-1/4" Long - STD	1		
19	1026903	Union 1/2 NPT	1		
20	1004640	1/2" Close Nipple 1 Long	1		
21	1026733	1/2 NPT Street Elbow 90 Deg.	1		
22	1785001	Gas Valve Bracket	1		
23	1806501	Redundant Valve W/OFF Natural 40K 60K	1	Mar-96	
	1806502	Redundant Valve W/OFF LP 40-60-80K	1	Mar-96	
	1806503	Redundant Valve W/OFF LP Natural 80	1	Mar-96	
24	1038401	Hex Seal Bushing 1/2 X 3/8	1		

* NOT ILLUSTRATED

RECOMMENDED STOCK PARTS

GARLAND PARTS IDENTIFICATION
Burner Section Components MCO-GS/GD-10 A, M, E
MCO Series

ITEM	PART #	DESCRIPTION	MODEL		
			MCO-GS/GGD-10 A, M, E		
			QTY	FROM DATE	TO DATE
25	1810301	7/16" Tubing - Valve to Manifold	1	Mar-99	
	1911101	7/16" Tubing - Valve to Manifold	1	Mar-99	
	M 123	7/16" Compress	2		
	M 122	7/16" Ferrule	2		
26	GM 308	1/4 Pilot Tubing 40,60,80K -Sold by The Foot	1		

Gas Conversion Kits (Field Re-Certification Required)

CK4100	Natural To Liquid Propane - 40K			
CK4102	Natural To Liquid Propane - 60K			
CK4104	Natural To Liquid Propane - 80K			
CK4101	Liquid Propane to Natural - 40K			
CK4103	Liquid Propane to Natural - 60K			
CK4105	Liquid Propane to Natural - 80K			

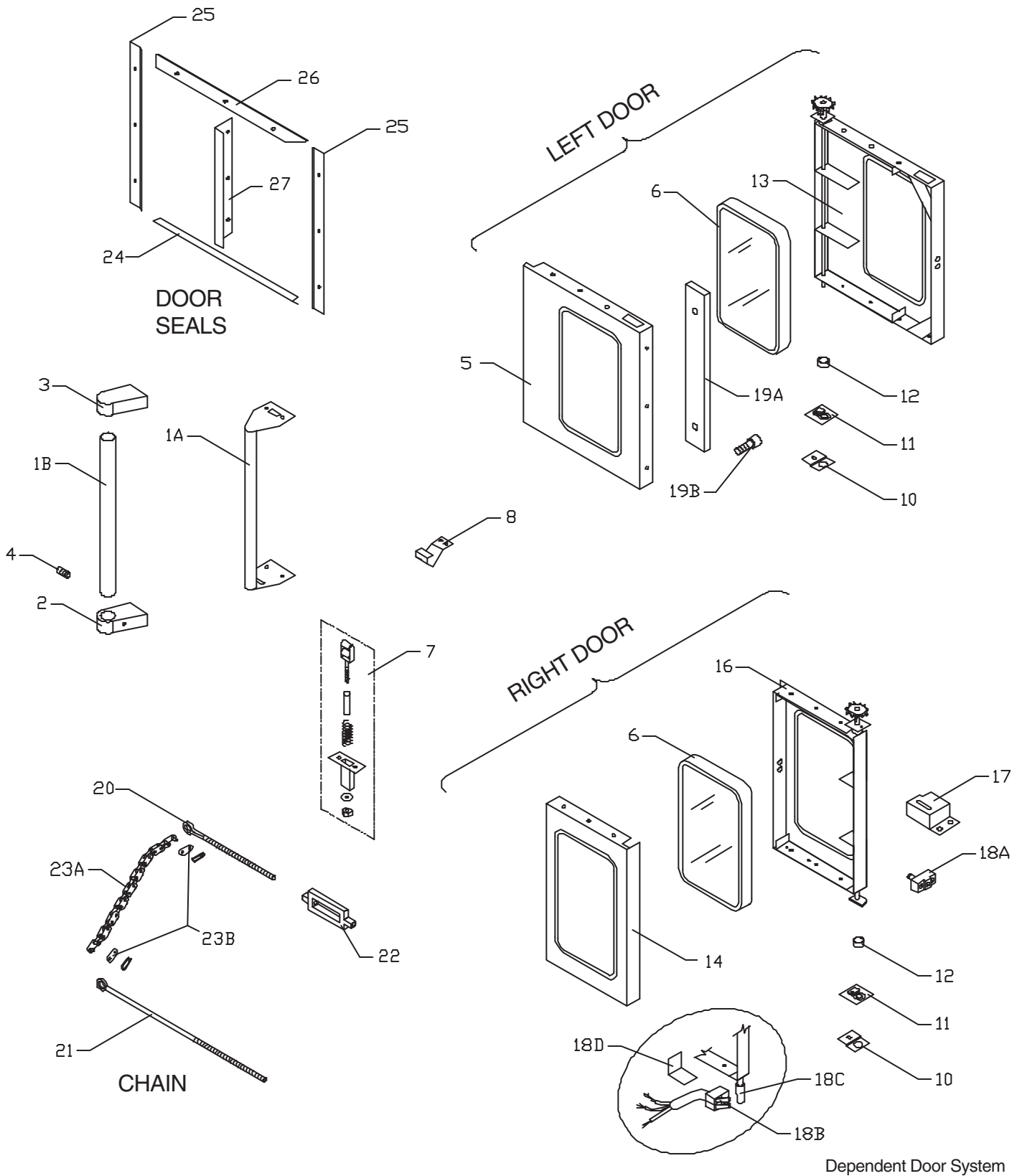
Burner Pack Assy's

1 Thru 16	CK4542 NAT or CK4543 LP 40K			
1 Thru 16	CK4544 NAT or CK4545 LP 60K			
1 Thru 16	CK4546 NAT or CK4547 LP 80K			
Also	Items 4 And 7 On Pg 31			

* NOT ILLUSTRATED

RECOMMENDED STOCK PARTS

NOTES



GARLAND PARTS IDENTIFICATION

Dependent Door Section Components MCO-GS/GD-10 A, M, E

MCO Series

ITEM	PART #	DESCRIPTION	MODEL		
			MCO-GS/GD-10 A, M, E		
			QTY	FROM DATE	TO DATE
1A	1840999	Door Handle - Black	1	Feb-97	
1B	1664802	Door Handle - Black	1		Feb-97
2	1562604	Door Handle End Black - Bottom	1		Feb-97
3	1562605	Door Handle End Black - Top	1		Feb-97
4	8003800	Set Screw Socket (3 PC. Handle Only)	2		Apr-98
5	1803703	Left Door Panel - Window	1		
	1803704	Left Door Panel - Solid	1		
6	1010999	Oven Door Window (3/16" Glass)	1		
7	1757998	Latch Bench Ass'y	1	Aug-95	
8	1810201	Door Catch	1		Apr-97
	1841201	Door Catch	1	Apr-97	
9*	1803797	Left Door Frame W/A NLA Replaced By CK1803795 -A or CK1803796 -A			
10	1302800	Upper Door Bearing Retainer	2		
11	1010589	Hinge Bracket Ass'y W/Bearing	2		
12	1011201	Steel Tubing Chrome Spacer	2		
13	1803706	Left Door Liner Only-Window-NLA-Replaced by CK1803795 -A			
	1803705	Lt.Door Liner Only-Solid-NLA-Replaced by CK1803796 -A			
	CK1803795-A	Lt Door Liner + Frame-Window, with Welded Cam	1	Apr-97	
	CK1803796-A	Lt Door Liner + Frame - Solid, with Welded Cam	1	Apr-97	
14	1803711	Rt Door Panel - Window	1		
	1803712	Rt Door Panel - Solid	1		
15*	1803798	Rt Door Frame-Window, with Welded Cam-NLA (R/B CK1803793-A or B)			
	1803799	Rt Door Frame-Solid with Welded Cam-NLA (R/B-CK1803794-A or B)			
	1803709	Rt Door Liner Only-Window-NLA (R/B CK1803793 -A or B)			
	1803710	Rt Door Liner Only-Solid-NLA (R/B CK1803794 - A or B)			
16	CK1803791-A	Rt Door Liner + Frame-Window, W/Welded Cam.			Mar-99
	CK1803791-B	Rt Door Liner + Frame-Window,		Mar-99	
	CK1803794-A	Rt Door Liner + Frame-Solid, W/Welded Cam.			Mar-99
	CK1803794-B	Rt Door Liner + Frame - Solid		Mar-99	
17	1805801	Micro Switch Mounting Bracket	1		Mar-99
18A	1019600	Micro Door Switch	1		Mar-99
18B	1855601	Limit Switch Upper	1	Mar-99	Jun-99
	1855603	High Temp Micro Switch	2	Jun-99	
18C	1905202	Micro Switch Door Cam	1	Mar-99	
18D	1905302	Micro Switch Bracket Full Size	1	Mar-99	
19A	1663201	Handle Bracket Plate (used with 3 pc handle only)	1	May-96	Feb-97
19B	8003406	Hex Head Machine Screw 1/4"-20 X 1	2		Feb-97
20	1014201	Connecting Left Door Rod - Short	2		
21	1014200	Connecting Right Door Rod - Long	2		
22	1015000	Turnbuckle 1/4-20 With 4" Take Up	2		
23*	CK1138	Door Chain Assembly Included 20 Thru 23 Fully Assembled	2		
23A	1021100	Roller Chain #40 (Dependent Door Only)	2		
23B	1021299	Connecting Links #40 Components	4		

* NOT ILLUSTRATED

RECOMMENDED STOCK PARTS

GARLAND PARTS IDENTIFICATION
Dependent Door Section Components MCO-GS/GD-10 A, M, E
MCO Series

ITEM	PART #	DESCRIPTION	MODEL		
			MCO-GS/GD-10 A, M, E		
			QTY	FROM DATE	TO DATE
24	1679301	Bottom Door Seal	1		Feb-97
	1841401	Bottom Door Seal Forward	1	Feb-97	
25	1679303	Side Door Seal	2		Feb-97
	1841403	Side Door Seal Forward	2	Feb-97	
26	1679302	Door Seal Top	1		Feb-97
	1841402	Top Door Seal Forward	1	Feb-97	
27	1841404	Side Door Seal Std. / Retro Fit	1	Feb-97	

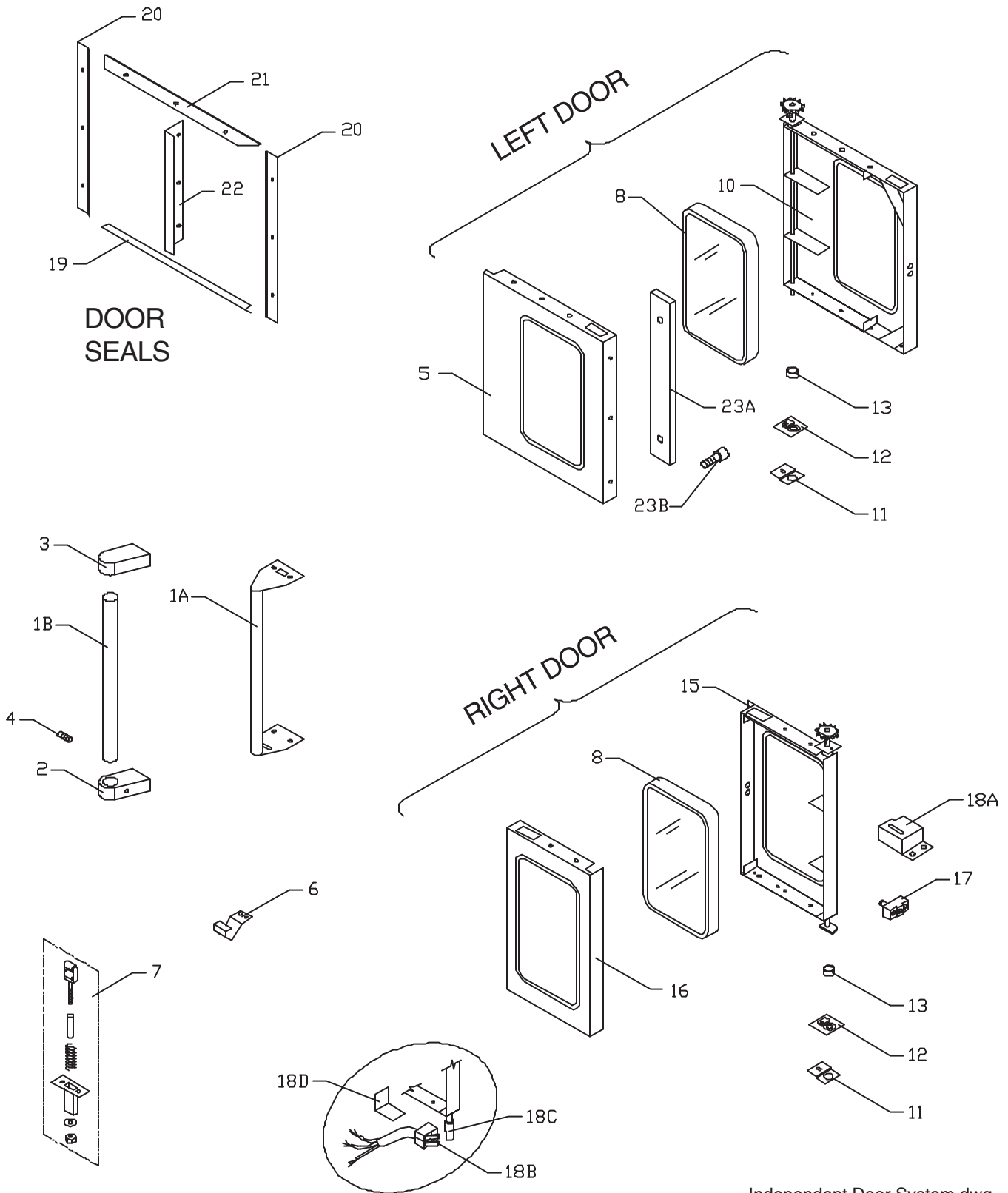
Complete Door Assy. Part Numbers

CK1803789-A	Lt Door Ass'y W/Window Welded Cam, 1 Pc. Handle Dep. (all MCO-GS/GD Models)			
CK1803788-A	Lt Door Ass'y Solid W/Welded Cam, 1 pc. Handle, Dep. (all MCO-GS/GD Models)			
CK1803785-A	Rt Door Ass'y W/Window, Welded Cam, Dep.			Mar-99
CK1803785-B	Rt Door Ass'y Window, Welded Cam, Dep.		Mar-99	
CK1803784-A	Rt Door Ass'y Solid, W/Welded Cam, Dep.			Mar-99
CK1803784-B	Rt Door Ass'y Solid, Slip on Cam, Dep.		Mar-99	

* NOT ILLUSTRATED

RECOMMENDED STOCK PARTS

NOTES



Independent Door System.dwg

GARLAND PARTS IDENTIFICATION
Independent Door Section Components MCO-GS/GD-10 A, M, E
MCO Series

ITEM	PART #	DESCRIPTION	MODEL		
			MCO-GS/GD-10 A, M, E		
			QTY	FROM DATE	TO DATE
1A	1840999	Door Handle - Black	2	Feb-97	
1B	1664802	Door Handle - Black	2		Feb-97
2	1562604	Door Handle End Black - Bottom	2		Feb-97
3	1562605	Door Handle End Black - Top	2		Feb-97
4	8003800	Set Screw Socket (3 PC. Handle Only)	2		Apr-98
5	1803703	Left Door Panel - Window	1		
	1803704	Left Door Panel - Solid	1		
6	1810201	Door Catch	2		Apr-97
	1841201	Door Catch	2	Apr-97	
7	1757998	Latch Bench Ass'y	2	Aug-95	
8	1010999	Oven Door Window (3/16" Glass)	2		
9*	1803797	Left Door Frame W/A NLA Replaced By CK1803795 -A or CK1803796 -A			
10	1803706	Left Door Liner Only-Window-NLA-Replaced by CK1803795 -A			
	1803705	Lt.Door Liner Only-Solid-NLA-Replaced by CK1803796 -A			
	CK1803795-B	Lt Door Liner + Frame-Window, No welded Cam	1	Apr-97	
	CK1803796-B	Lt Door Liner+ Frame - Solid, No welded Cam	1	Apr-97	
11	1302800	Upper Door Bearing Retainer	2		
12	1010589	Hinge Bracket Ass'y W/Bearing	2		
13	1011201	Steel Tubing Chrome Spacer	2		
14*	1803709	Rt Door Liner Only - Window - NLA (R/B CK1803793 -A or B)			
	1803710	Rt Door Liner Only-Solid-NLA (R/B CK1803794 - A or B)			
	1803798	Rt Door Frame-Window, with Welded Cam-NLA (R/B CK1803793-A or B)			
	1803780	Rt Door Frame-Window No Cam NLR R/B CK1803793-B			
	1803799	Rt Door Frame-Solid with Welded Cam-NLA (R/B CK1803794-A or B)			
	1803781	Rt Door Frame-Solid, No Cam NLA R/B CK1803794-B			
15	CK1803793-A	Rt Door Liner + Frame-Window, with Welded Cam			Mar-99
	CK1803793-B	Rt Door Liner+ Frame -Window, No Cam		Mar-99	
	CK1803794-A	Rt Door Liner + Frame-Solid, W/Welded Cam			Mar-99
	CK1803794-B	Rt Door Liner + Frame - Solid,		Mar-99	
16	1803707	Rt Door Panel - Window - Independent	1		
	1803708	Rt Door Panel - Solid - Independent	1		
17	1019600	Micro Door Switch	1		Mar-99
18A	1805801	Micro Switch Mounting Bracket	1		Mar-99
18B	1855601	Limit Switch Upper	2	Mar-99	Jun-99
	1855603	High Temp Micro Switch	2	Jun-99	
18C	1905202	Micro Switch Door Cam	1	Mar-99	
18D	1905302	Micro Switch Bracket Full Size	1	Mar-99	
19	1679301	Bottom Door Seal	1		Feb-97
	1841401	Bottom Door Seal Forward	1	Feb-97	
20	1679303	Side Door Seal	2		Feb-97
	1841403	Side Door Seal Forward	2	Feb-97	
21	1679302	Door Seal Top	1		Feb-97
	1841402	Top Door Seal Forward	1	Feb-97	

* NOT ILLUSTRATED

RECOMMENDED STOCK PARTS

GARLAND PARTS IDENTIFICATION
Independent Door Section Components MCO-GS/GD-10 A, M, E
MCO Series

ITEM	PART #	DESCRIPTION	MODEL		
			MCO-GS/GD-10 A, M, E		
			QTY	FROM DATE	TO DATE
22	1841404	Side Door Std. /Retro Fit	1	Feb-97	
23A	1663201	Handle Bracket late (used with 3 pc handle only)	2	May-96	Feb-97
23B	8003406	Hex Head Machine Screw 1/4-20" X 1	2		Feb-97

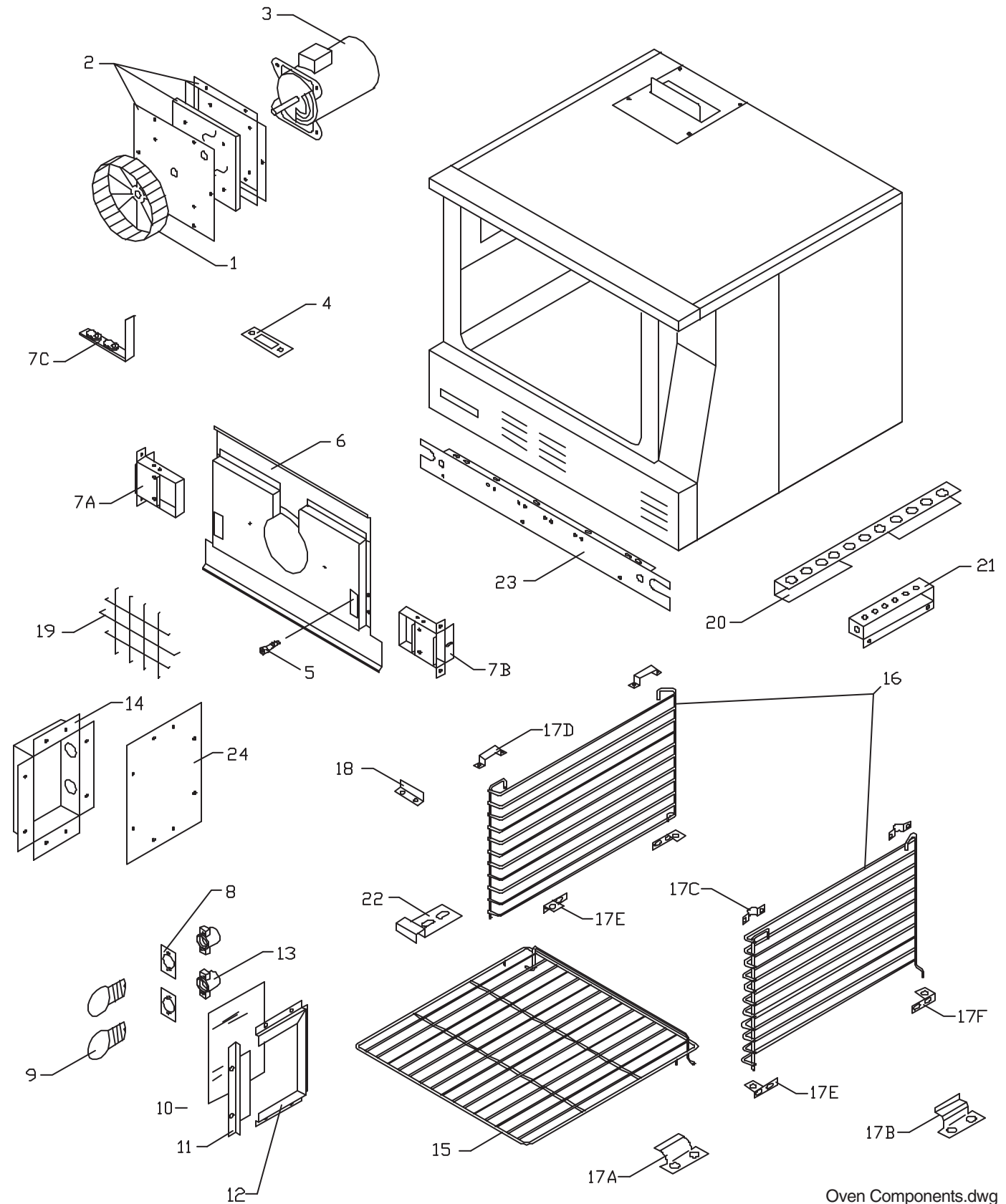
Complete Door Assy. Part Numbers

CK1803789-B	LT DR ASSY with Window, No Cam, 1 pc. Handle, Indep.		Feb-97	
CK1803789-C	LT DR ASSY w/Window, No Cam, 3 pc. Handle, Indep.			Feb.-97
CK1803788-B	LT DR ASSY Solid, No Cam, 1 pc. Handle, Indep.		Feb-97	
CK1803788-C	LT DR ASSY Solid, No Cam, 3 pc. Handle, Indep.			Feb-97
CK1803787-A	RT DR ASSY w/Window, Welded Cam, 1 pc. Handle Indep.			Mar-99
CK1803787-B	RT DR ASSY w/Window, Slip on Cam, 1 pc. Handle,Indep.		Mar-99	
CK1803787-C	RT DR ASSY w/Window, Welded Cam, 3 pc. Handle, Indep.			Feb-97
CK1803786-A	RT DR ASSY Solid, w\Welded Cam, 1 pc. Handle, Indep.			Mar-99
CK1803786-B	RT DR ASSY Solid, w/Slip on Cam,1 pc. Handle, Indep.		Mar-99	
CK1803786-C	RT DR ASSY Solid, with Welded Cam, 3 pc. Handle, Indep.			Feb-97

* NOT ILLUSTRATED

RECOMMENDED STOCK PARTS

NOTES



Oven Components.dwg

GARLAND PARTS IDENTIFICATION
Oven Components MCO-GS/GD-10 A, M, E
MCO Series

ITEM	PART #	DESCRIPTION	MODEL		
			MCO-GS/GD-10 A, M, E		
			QTY	FROM DATE	TO DATE
1	G02952-01P	Blower Wheel Assembly Plated	1		
2	1782198	Motor Pocket	1		
3	1686711	Motor 3/4 HP, 115V, 2 Speed	1	Feb-97	
	1686712	Motor 3/4 HP, 208/240V, 2 Speed	1	Jun-97	
4	1784301	Oven Vent Cap - 40K	2		
	1784302	Oven Vent Cap - 60K	2		
	1784303	Oven Vent Cap - 80K	2		
5	8004005	Allen Head Cap Screws - 1/4 - 20	4		
6	1802999	Fan Cover, SS S/W	1		
7A	1782599	Fan Cover Duct, Left	1		
7B	1782598	Fan Cover Duct, Right	1		
7C	1785997	Fan Duct Restrictor - 80K	2		
	1785998	Fan Duct Restrictor - 60K	2		
	1785999	Fan Duct Restrictor - 40K	2		
8	1025900	Light Socket Gasket	2		
9	1623900	Light Bulb 40W	2		
10	1676901	Glass Hi Temp	1		
11	1606801	Glass Frame Left	1		
12	1606802	Glass Frame	1		
13	1025800	Lamp Socket - Porcelain	2		
14	1678701	Light Box	1		
15	1607000	Master Conv Oven Rack- Standard 23" x 28"	6		
	1607010	Master Conv Oven Rack - Deep 27" x 28"	6		
16	1607001	Oven Rack Guide - Standard 23" x 28"	2		Feb-97
	1704531	Oven Rack Guide 10 Pos. Left - 2"1 x 23"	1	Feb-97	
	1704532	Oven Rack Guide 10 Pos. Right - 21" x 23"	1	Feb-97	
	1704511	Oven Rack Guide 13 Pos. Standard - 24" x 20"	2		Feb-97
	1704535	Oven Rack Guide 13 Pos. Left - 20" x 23"	1	Feb-97	
	1704536	Oven Rack Guide 13 Pos. Right - 20" x 23"	1	Feb-97	
	1704502	Oven Rack Guide - Deep - 28" x 20"	2		Feb-97
	1704533	Oven Rack Guide - 10 Pos. Left -Deep - 20" x 27"	1	Feb-97	
	1704534	Oven Rack Guide - 10 Pos. Right- Deep -20" x 27"	1	Feb-97	
	1704512	Oven Rack Guide - 13 Pos. Deep - 20" x 28"	2		Feb-97
	1704537	Oven Rack Guide - 13 Pos. Left - Deep - 20" x 27"	1	Feb-97	
1704538	Oven Rack Guide - 13 Pos. Right - Deep - 20" x 27"	1	Feb-97		
17A	1317600	Rack Guide Clip	4		Jun-95
17B	1676801	Rack Guide Clip	6	Jun-95	May-96
	1676801	Rack Guide Clip	4	May-96	Feb-97
17C	1765209	Rack Mounting Clip	2	Feb-97	Sep-98
17D	1765212	Rack Clip	4	Sep-98	
17E	1765210	Lower Rack Guide Clip - A	2	Mar-97	
17F	1765211	Lower Rack Guide Clip - B	2	Mar-97	
18	1317601	Rack Guide Hold Down Bracket	2		May-97
19	1014500	Blower Inlet Cover	1		
20	1015799	Capillary Tube Guard	1	Sep-95	Dec-98
21	1800801	Sensing Probe Bulb Shield	1	Dec-98	
22	1676811	Rack Guide Clip	2	May-96	Apr-98
23	1803813	Front Frame Hinge Channel Bottom	1		

* NOT ILLUSTRATED

RECOMMENDED STOCK PARTS

GARLAND PARTS IDENTIFICATION
Oven Components MCO-GS/GD-10 A, M, E
MCO Series

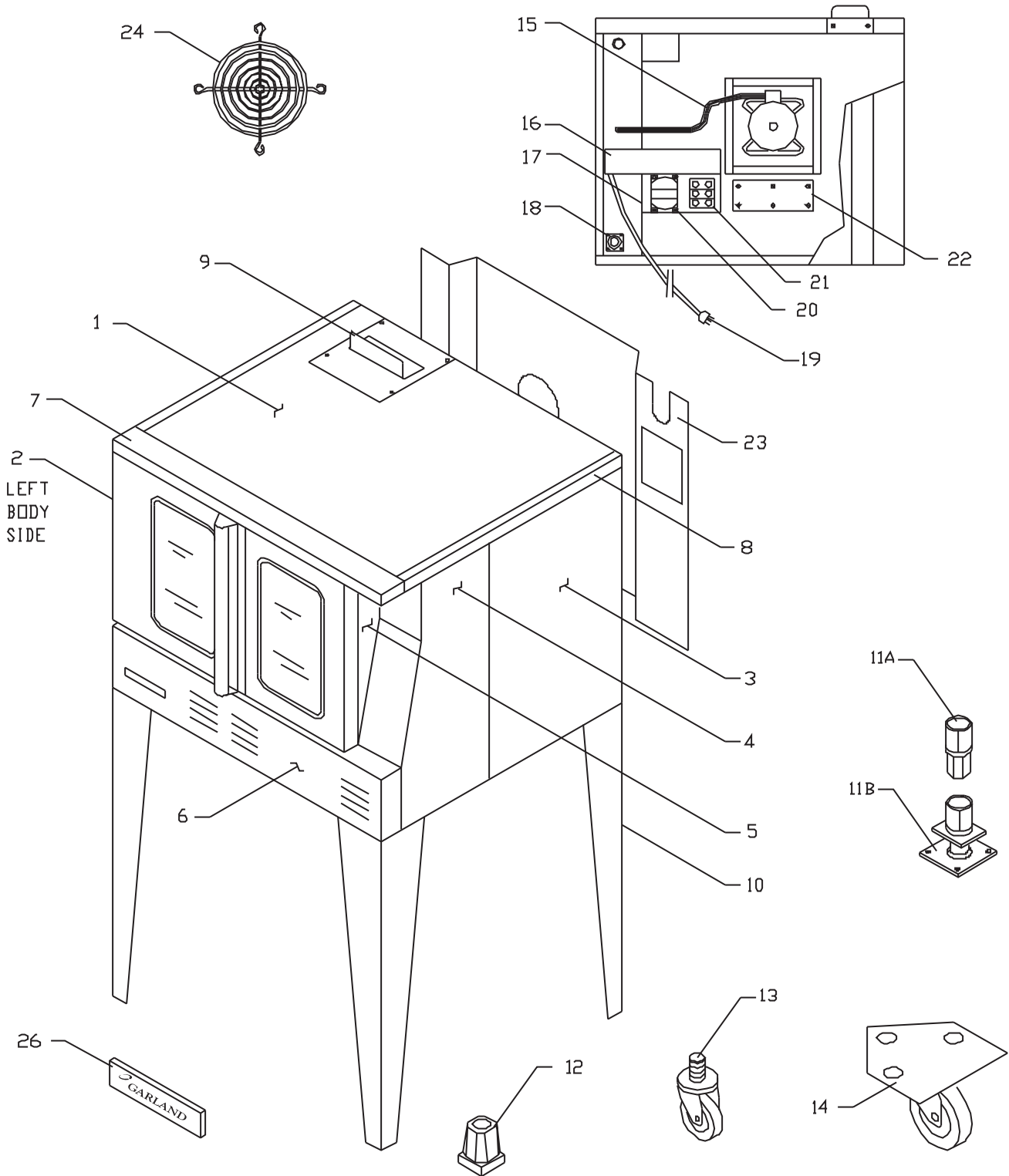
ITEM	PART #	DESCRIPTION	MODEL		
			MCO-GS/GD-10 A, M, E		
			QTY	FROM DATE	TO DATE
24	1809699	Oven Light Patch - Porcelain	1		
	1809601	Oven Light Patch - SS	1		
25*	CK1003090	Motor Ass'y - 2 Speed - 115V Items 1, 2 & 3 (Supplied w/3/4 HP)			
26*	CK1003091	Motor Ass'y - 2 Speed - 208/240V Items 1, 2 & 3 (Supplied w/3/4 HP)			

* NOT ILLUSTRATED

RECOMMENDED STOCK PARTS

NOTES

REAR VIEW



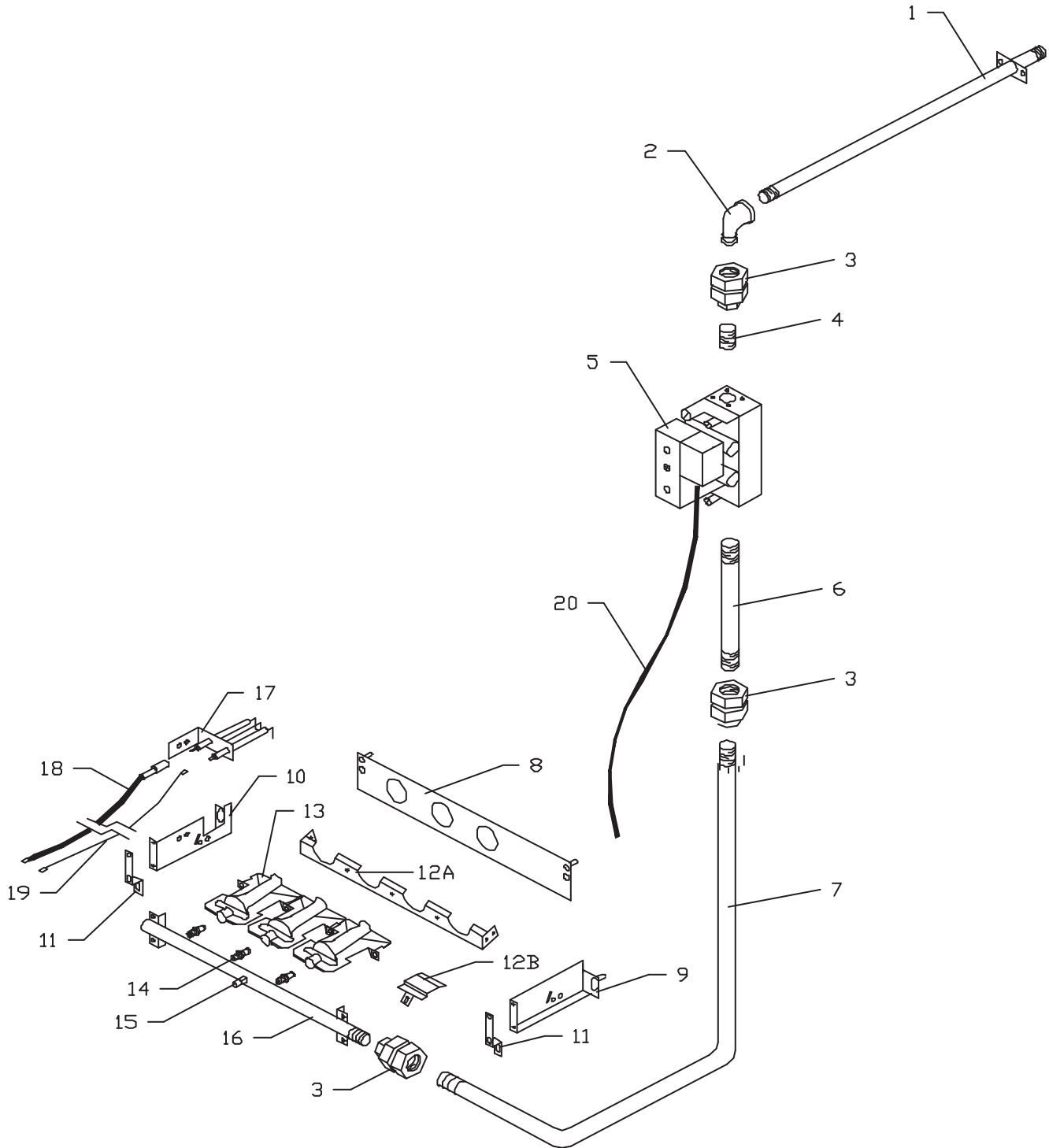
Main Exterior .dwg

GARLAND PARTS IDENTIFICATION
Main Exterior Components MCO-GS/GD-10 A, M, E
MCO Series

ITEM	PART #	DESCRIPTION	MODEL		
			MCO-GS/GD-10 A, M, E		
			QTY	FROM DATE	TO DATE
1	1802801	Main Top GG	1		
	1802802	Main Top SS	1		
2	1785402	Body Side Left SS	1		
	1785404	Body Side Left GG	1		
3	1785401	Body Side Right SS	1		
	1785403	Body Side Right GG	1		
4	1785398	Control Panel Right S/W	1		
	1785399	Control Panel Right SS S/W	1		
5	1802701	Control Panel LT	1		
6	1807201	Combustion Chamber Gas	1		
7	1802299	Trim Cap Veneer S/W	1		
8	1829101	Main Top Side Trim	2		
9	1818201	Oven Vent Protection Plate - Std	1		
	1818203	Oven Vent Protection Plate - Deep	1		
10	1805299	Leg - Single Deck - Black - 23 15/16"	4		
	1805298	Leg - Single Deck - SS -23 15/16"	4		
	1805399	Leg - Double Deck - Black -5"	4		
	1805398	Leg - Double Deck - SS - 5"	4		
11A	1236100	Square Foot Insert	4		
11B	CK1236100	Deck Fastener/ Bolt-Down Leg (optional)	1 per Leg		
12	1775102	Caster Insert - Single Deck Only	4		
13	1027500	Caster - Single Deck Only	2		
	1027501	Caster W/Brake - Single Deck Only	2		
14	1821598	Caster - Double Deck Only	2		
	1821599	Caster W/Brake - Double Deck Only	2		
	1821596	Lo-Profile Caster - Double Deck Only	2		
	1821597	Lo-Profile Caster W/Brake - Double Deck Only	2		
15	1029426	3/8 BX Cable 26 Long	1		
16	1823001	Element Wire Raceway	1		
17	1827901	Transformer Shield	1		
18	1032504	Knockout Plate	1	Sep-95	
19	1029501	8' Long Power Supply Cord	1		
20	1030801	Transformer 240V .15KVA (Hi Voltage Gas Units)	1		Mar-99
	1030802	Transformer 208V .15KVA (Hi Voltage Gas Units)	1		Mar-99
21	1193900	Terminal Block 3 Pole – Hi Voltage	1		
22	1809201	Element Patch	1		
23	1820301	Main Back Std SS	1		
	1820302	Main Back Std GG	1		
	1820303	Main Back - Deep SS	1		
	1820304	Main Back - Deep GG	1		
24	1919001	Cooling Fan Guard	1	Mar-99	
25*	1782001	Instruction Label	1	May-96	
26	9004500	Nameplate	1	Feb-96	Apr-99
	1902917	10" GARLAND Nameplate	1	Apr-99	

* NOT ILLUSTRATED

RECOMMENDED STOCK PARTS



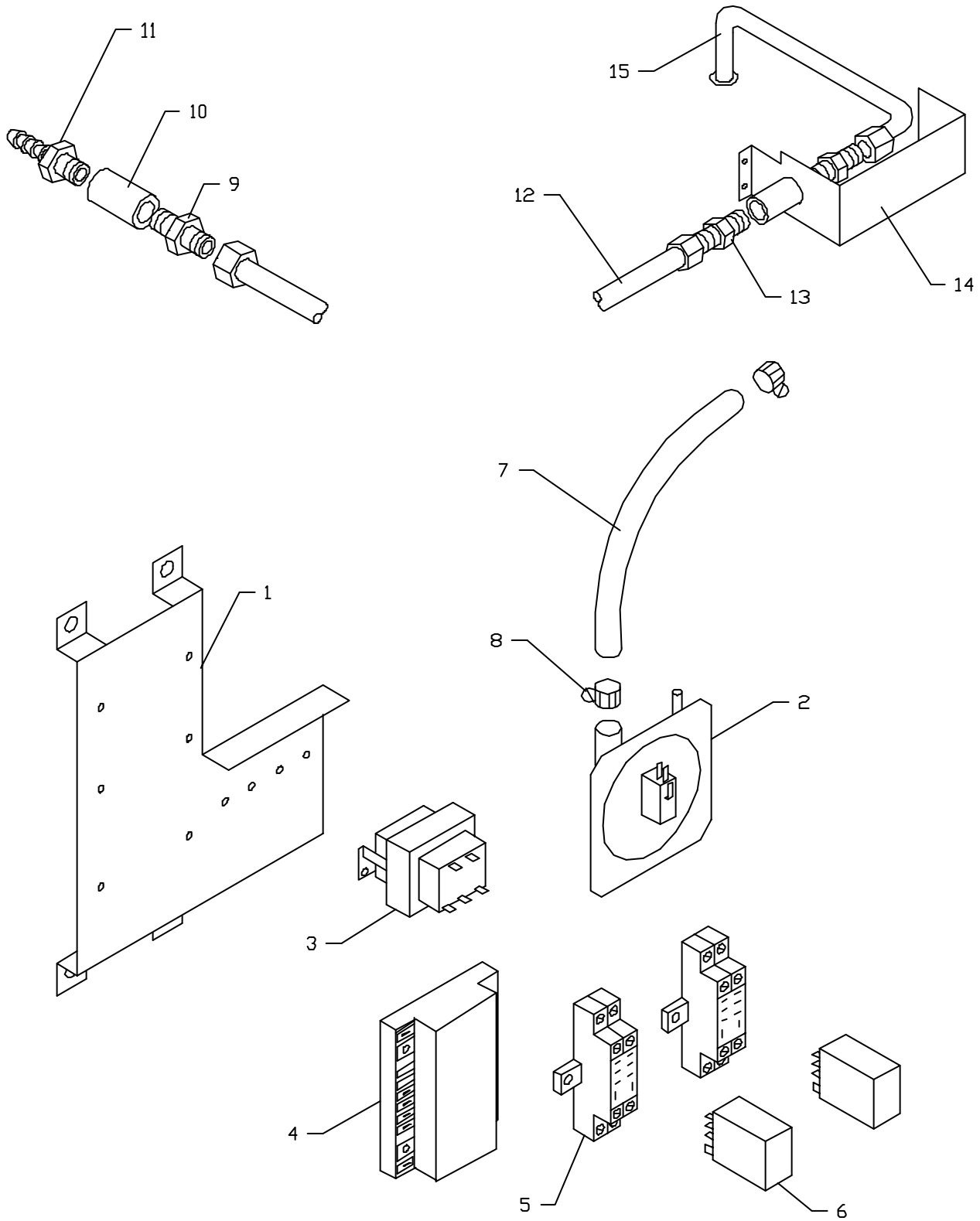
GARLAND PARTS IDENTIFICATION
Burner Package Section MCO-GS/GD-10-MU, EU (Australia)

MCO Series

ITEM	PART #	DESCRIPTION	MODEL		
			MCO-GS/ GD-10MU, EU		
			QTY	FROM DATE	TO DATE
1	1786449	Tail Pipe Std.	1		
	1786448	Tail	1		
2	1026733	1/2 NPT Street Elbow 90 Deg.	1		
3	1026903	Union 1/2 NPT	3		
4	1004640	Close Nipple 1/2" NPT x 1" Lg	1		
5	2579700	Multi Function Gas Valve	1		
6	1004642	Nipple 1/2" NPT x 2"	1		
7	1838501	Supply Manifold 1/2" Pipe	1		
8	1800902	Venturi Plate 60K BTU	1		Feb-97
	1800903	Venturi Plate 60K / 80K BTU	1	Feb-97	
9	1801298	Burner Mounting Bracket RT S/W	1		
10	1801299	Burner Mounting Bracket LT S/W	1		
11	1814601	Burner Pkg Mounting Bracket	2		
12A	1786801	Burner Rest	1		
12B	1847602	Carry Over Shield (as required)	3		
13	1803501	Inshot Burner	3		Feb-97
	1803501	Inshot Burner	4	Feb-97	
14	1804348	Natural Orifice 80K BTU (.078")	3		Feb-97
	1804350	# N/A	4	Feb-97	
	1804355	#55 - LP Burner Orifice	3		Feb-97
	1804356	#56 - LP Burner Orifice	4	Feb-97	
15	02251-1	Pressure Test Spigot	1		
16	1784442	Manifold Pipe	1		
17	2580800	Ign Electrode / Flame Sensor	1	Series 9712CJXX	
	1902001	Electrode Assembly (cw 36" wire)	1	Series 9801CJXX	
	1902002	Direct Spark Ignition	1	Series 9801CJXX	
	CK4038	Spark Igniter & Sensor Conv. Kit	1	Series 9712CJXX	
18	1815002	Hi Tension Ignition Wire	1		
19	1815003	Flame Sensor Wire 48"	1		
20	2579701	Plug With Cord	1		
	2579702	Gasket & Screw	1		

* NOT ILLUSTRATED

RECOMMENDED STOCK PARTS



Control Option Australia.dwg

GARLAND PARTS IDENTIFICATION
Control Option Section MCO GS/GD-10 MU, EU (Australia)
MCO Series

ITEM	PART #	DESCRIPTION	MODEL		
			MCO-GS/GD-10 MU, EU		
			QTY	FROM DATE	TO DATE
1	1787341	Ignition Module Mtg Bracket	1		
2	2579900	Air Pressure Switch	1		
3	1636000	Transformer - 24V / 240V	1		
4	2579800	Direct Spark Ignition Module	1		
5	2475600	Relay Socket	2		
6	2475501	Relay 240V	2		
7	1839402	1/4" Blue Rubber Tubing - 16" LG	1		
8	1518100	Mini Hose Clamp	2		
9	1034701	Straight Connector - 1/4 x 7/16cc	1		
10	1004806	1/4 NPT Pipe Coupling	1		
11	1848701	Hose Barb Fitting	1		
12	1900801	Air Supply Tube - 7/16 Tubing	1		
13	1095499	Straight Connector 68-7C	2		
14	1814898	Outer Oven Vent Ass'y	1		
15	1900802	Flared Air Sensing Tube	1		

* NOT ILLUSTRATED

RECOMMENDED STOCK PARTS

GARLAND PARTS IDENTIFICATION

Revision History

REV. #	PAGE #	ITEM #	NOTE	DATE
3	13	11	Book Reformatted	Oct 13/05
			Part # 1517706 Gas/Electric MCO Control Is No Longer Available	
			New Part Number # 4518889 – Controller Kit 115 V Gas	
			New Part Number #4518902 – Controller Kit 208/240V Electric	

NOTES

NOTES

NOTES

 **GARLAND**[®]