

PHOTO NOT
AVAILABLE

Specification:

Heavy-duty gas range with oven, Model M42-6R, combination top. One 17" (432mm) wide even hot top, 30,000 BTU (8.79kW) on left and two 35,000 BTU (10.25kW) Starfire open burners. Heavy duty cast iron top grates/ring grates 34" (864mm) wide x 38" (965mm) deep, including 7-1/2" (191mm) deep stainless steel front rail. Porcelain enamel oven interior measuring 26-1/4" (667mm) wide x 13-1/2" (343mm) high x 29" (737mm) deep. 40,000 BTU (11.72kW) cast iron oven burner. Stainless steel front with black powder coat epoxy sides. Natural or propane gas. CSA, C/US certified and NSF listed. MST models carry CE mark for Europe. (Also available with storage base with doors, Model M42-6S, and modular top, Model M42-6T).

Standard Features:

- Stainless steel front, black powder coat epoxy sides
- 6" (152mm) chrome steel adjustable legs
- 7-1/2" (191mm) stainless steel front rail
- 1 heavy duty cast iron even hear top on left
- Heavy gauge aluminized steel radiation baffle shield
- 1 burner, 30,000 BTU total (8.89kW)
- 35,000 BTU (10.25kW natural gas), Starfire open burners
- Removable ring grates over each burner
- Cast iron top grates
- Stainless steel drip tray under open burners
- Piezo Spark ignition for oven
- 40,000 BTU (11.72kW) natual gas, 35,000 BTU (10.25kW propane gas cast iron oven burner
- Fully porcelainized oven interior
- 1 year parts & labor warranty (USA & Canada only)

Optional Features:

- Stainless steel left, right, or both sides, or main back
- Stainless steel common front rail up to 102" (2591 mm) wide, (two or more units in a battery)
- Stainless steel sides standard for two or more units - specify
- Corner columns for banking—specify
- Stainless steel oven interior
- Convection oven base, add C to model #, e.g. M42-6RC
- Additional oven rack
- Rear gas connection, 3/4" or 1-1/4" NPT
- End caps and cover (no charge) - Must specify
- 4 swivel casters with front brakes
- Polyurethane non-marking swivel casters w/ front brakes
- 6" (152mm) stainless steel adjustable legs
- 4" (102mm) chrome steel adjustable legs
- Storage base shelf of aluminized or stainless steel
- Single deck stainless steel tubular high shelf
- Double deck stainless steel tubular high shelf
- 10" (254 mm) high stainless steel backguard
- 17" (432mm) high stainless steel backguard
- 33" (838mm) high stainless steel backguard
- Stainless steel vertical flue riser, 13"(330mm)W x 33"(839mm)H
- MST model prefix-Sentry total flame failure protection on all burners, e.g. MST42-6R
- E-model suffix- electric spark ignition on all pilots for MST models only, e.g. MST42-6RE
- 230 volt, 50 cycle components, RC motor and/or electric ignition (export)
- Celsius dial for oven thermostat (no charge)

NOTE: Ranges supplied with casters must be installed with an approved restraining device.



Garland Commercial Industries, Inc.
 185 East South Street
 Freeland, Pennsylvania 18224
 Phone: (570) 636-1000
 Fax: (570) 636-3903

Garland Commercial Ranges Ltd
 1177 Kamato Road, Mississauga, Ontario
 L4W 1X4 CANADA
 Phone: 905-624-0260
 Fax: 905-624-5669

Enodis UK LTD
 Swallowfield Way, Hayes, Middlesex
 UB3 1DQ ENGLAND
 Telephone: 081-561-0433
 Fax: 081-848-0041



Item #: _____

Model: M42-6R, M42-6S, M42-6T

Product Name: Master Series Combination Even Heat
Hot Top & Open Burner Top Range

Product	Width: In(mm)	Depth: In(mm)	Height: In(mm) (w/ NSF Legs)	Height: In(mm) (w/o NSF Legs)	Oven Interior: in(mm)		
					Width	Depth	Height
M42-6R	34(864)	38(965)	36-3/8(924)	30-3/8(772)	26-1/4(667)	29(737)**	13-1/2(343)
M42-6S	34(864)	38(965)	36-3/8(924)	30-3/8(772)	26-1/4(667)	29(737)	13-1/2(343)
M42-6T	34(864)	38(965)	36-3/8(924) w/stand	9-1/2(241) w/o stand*	N/A	N/A	N/A

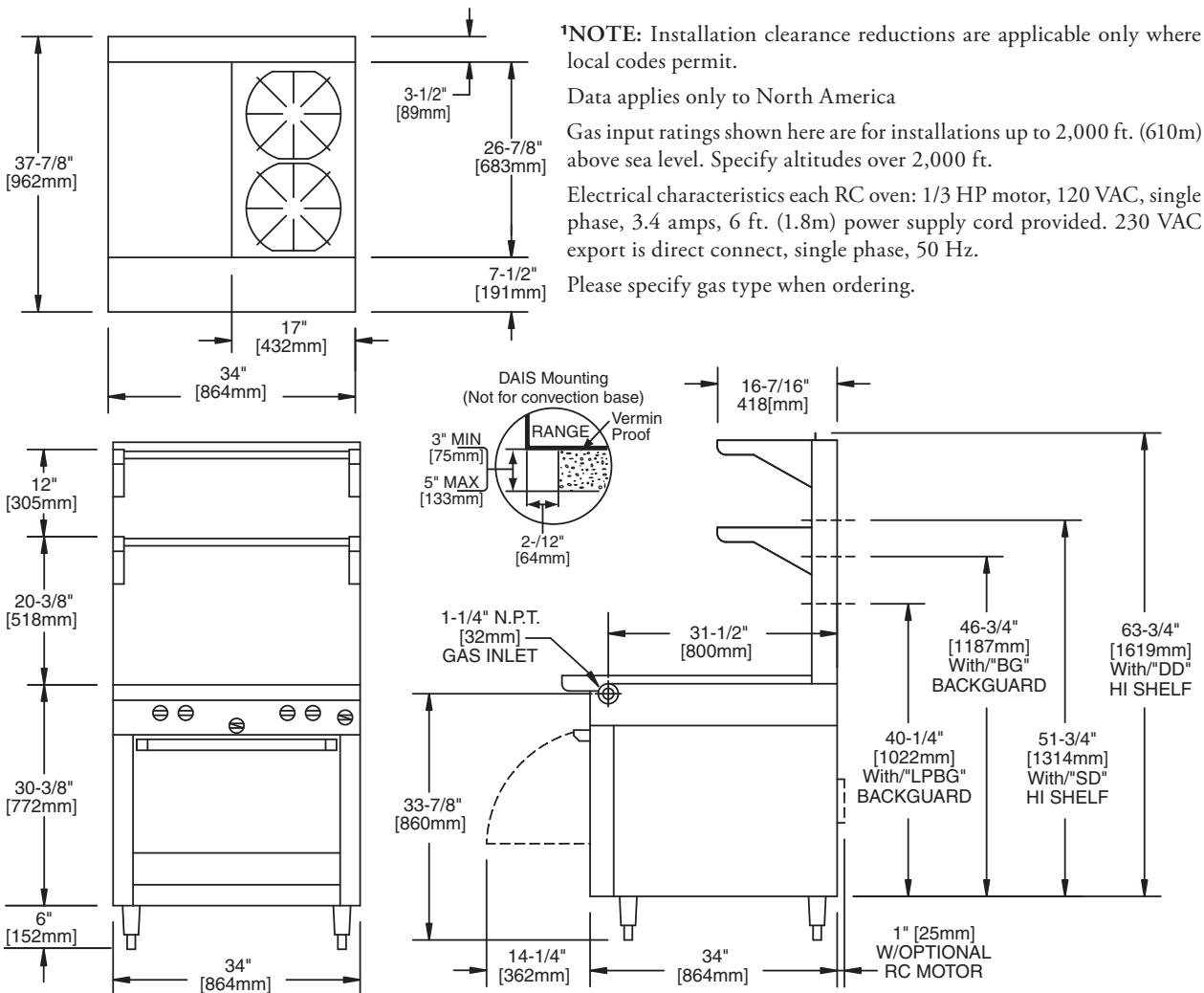
*Modular top has 1-1/2" seating flanges **RC oven is 25"(635mm) deep.

INPUT-BTU/hr (Natural Gas)	M42R-6R	M42-6RC	M42-6S & M42-6T
Hot Top	30,000 (8.90kW)	30,000 (8.90kW)	30,000 (8.90kW)
Open Burners	70,000 (20.50kW)	70,000 (20.50kW)	70,000 (20.50kW)
Oven***	40,000 (11.72kW)	37,000 (10.84kW)	N/A
Total	140,000 (41.82kW)	137,000 (40.24kW)	100,000 (30.10kW)

RC=Range w/Convection Oven R=Range w/Oven S=Range w/Storage Base T=Modular Top

*** Oven rated 35,000BTU (10.25kW) for Propane Gas

INSTALLATION NOTES			Shipping Wt: (Lb/Kg)	
Combustible Wall Clearances ¹	Entry Clearances	Operating Pressure	M42-6R	445/202
Sides: 11" (279mm) Back: 6" (152mm)	Crated: 39-1/4"(997mm) Uncrated: 34-1/4" (870mm)	Natural: 6" WC (15mbar) Propane: 10" WC (25mbar)	M42-6S	345/157
			M42-6T	255/116



Continuous product improvement is a Garland policy.

Printed in USA

Specifications and design are subject to change without notice.

Form #M42-6 (12/05)