



Item #: _____
 Models: CG- __ R Series (All Sizes)
 Product Name: Master Production Griddle
 Gas Type: Natural Propane



*Model CG-48R
 (shown w/optional stand & casters)*

Specification:

Heavy duty gas griddles (available in five sizes, 24", 36", 48", 60", and 72"). High performance volume production with even, consistent, controlled temperatures. 1"(25mm) thick griddle plate. Electronic thermostat with imbedded sensor and efficient 'U' shaped burner every 12"(205mm) of griddle width All stainless steel exterior. Full width front rail. 6" (152mm) legs standard or optional stand available.

Standard Features:

- Rear grease trough with front rail
- 1" (25mm) polished finish steel plate
- One "U" shaped 30,000 BTU (8.8kW) burner every 12" (305mm) of griddle width
- Controls 120V, 60Hz
- Electric main on/off power switch w/indicator light
- Electric on/off switch for each thermostat burner system, also has indicator light
- Electronic thermostat 150°F (101°C) to 450°F (268°C) for each burner every 12" (305mm)
- Gas pilot ignition indicator light
- Stainless steel sides
- Stainless steel valve panel
- Stainless steel backguard
- Stainless steel grease trough
- Stainless steel side griddle splashguards
- Stainless steel 6" (152mm) deep, sloped grease drawers with integral grease baffle
- 6" (152mm) high stainless steel adjustable legs
- Nickel plated thermostat guards
- Gas regulator valve
- 8" (203mm) high back splash
- Contoured grease chute opening

Optional Features: (No additional charge)

- 220-240 Volts, 50 Hz
- 10-1/2" (267mm) deep grease drawers (Stand Models Only)

Optional Features: (Additional charge)

- Stainless steel open stand, 30.292" (769mm) high with stainless steel bottom shelf on adjustable legs or casters (specify)

NOTE: Griddles supplied with casters must be installed with an approved restraining device.



Garland Commercial Industries, Inc.
 185 East South Street
 Freeland, Pennsylvania 18224
 Phone: (570) 636-1000
 Fax: (570) 636-3903

Garland Commercial Ranges Ltd
 1177 Kamato Road, Mississauga, Ontario
 L4W 1X4 CANADA
 Phone: 905-624-0260
 Fax: 905-624-5669

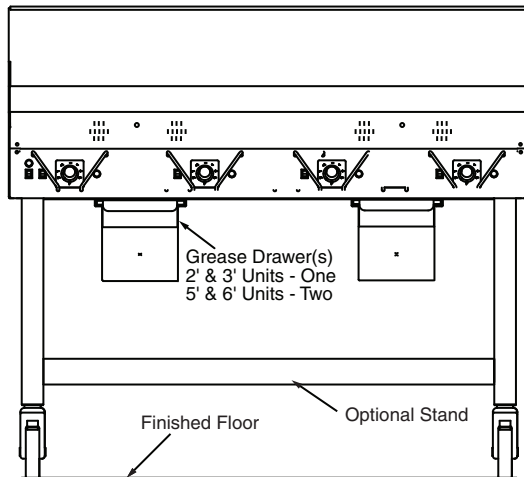
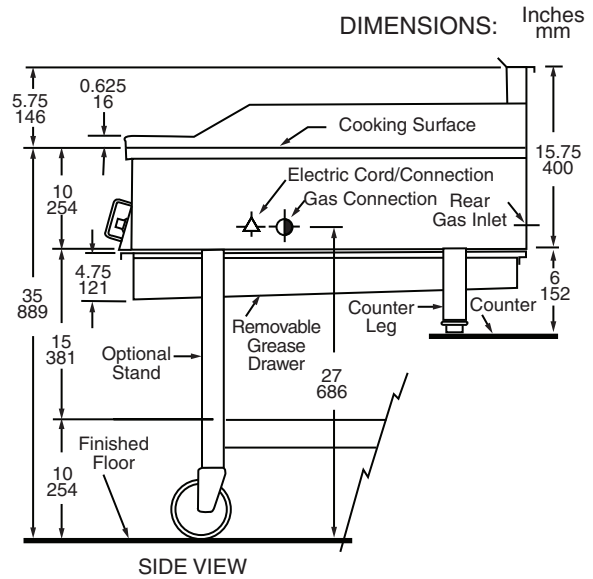
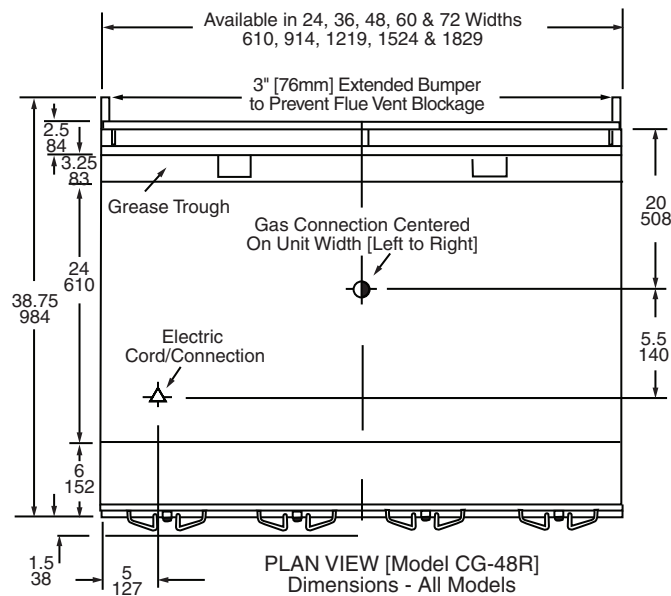
Enodis UK LTD
 Swallowfield Way, Hayes, Middlesex
 UB3 1DQ ENGLAND
 Telephone: 081-561-0433
 Fax: 081-848-0041

GARLAND® GAS
 Master Production Griddle
 Models: CG- __ R, All Sizes



Item #: _____
 Models: CG-__R Series (All Sizes)
 Product Name: Master Production Griddle
 Gas Type: Natural Propane

INSTALLATION NOTES		SPECIFY GAS TYPE		ELECTRICAL CHARACTERISTICS
Combustible Wall Clearances		Operating Pressure		Specifications
Sides: 6" (152mm)	Back: 6" (152mm)	Natural: 7" W.C. (17.4mbar)	Propane: 11" W.C. (24.4mbar)	120 V, Single Phase, 60Hz, 1 amp 6' (1829mm) power supply cord provided
<ul style="list-style-type: none"> IMPORTANT: Unit must be installed on legs for proper air circulation. 		<ul style="list-style-type: none"> Gas Input Ratings shown are for installations up to 2,000 feet (610mm) above sea level. BTU input ratings must be derated for high altitude installations 		<ul style="list-style-type: none"> NOTE: No cord and plug on export units. Direct connection on junction box.
ENTRY CLEARANCE		VENTILATION		EXPORT VOLTAGES
Crated	Uncrated	<ul style="list-style-type: none"> Commercial cooking equipment requires an adequate ventilation system. For additional information, refer to the National Fire Protection Association's standard NFPA96. 		<ul style="list-style-type: none"> NOTE: Export voltages are available on request. 220-240 volt, 50 Hz, 0.4 amps, single phase.
40" (1016mm)	38" (965mm)			
<ul style="list-style-type: none"> See illustration for further specifications & size statistics 				



INPUT CHART - Natural Or Propane Gas				
Model Number	BTU/HOUR	Kw	Gas Inlet	Shipping Weight
				Lbs./Kgs.
CG-24R	60,000	17.60	3/4"	335/152
CG-36R	90,000	26.40	3/4"	485/220
CG-48R	120,000	35.00	3/4"	625/284
CG-60R	150,000	44.00	3/4"	765/348
CG-72R	180,000	52.70	1"	995/411