

moisture+™

Model MP-ES-10-S
Specification:

Moisture+ Oven, Standard, is a full-size, multifunction electric oven with a solid state control, (temperature range; 150°F/66°C - 500°F/260°C), 1-hour, electro-mechanical timer, and automatic moisture injection. Oven interior is stainless steel with 6 oven racks and 13-position, removable rack guides. Standard-depth oven interior measures 29"W x 24"H x 24"D, (736mmW x 610mmH x 610mmD). Deep-depth oven interior measures 29"W x 24"H x 28"D, (736mmW x 610mmH x 711mmD). Exterior is stainless steel.

Moisture+ features innovative, automatic introduction of moisture into the baking/roasting process, producing higher yields and improved taste, texture, and eye appeal.


Standard Features:

- Solid state control, (temperature range; 150°F/66°C - 500°F/260°C), 1-hour, electro-mechanical timer, and automatic moisture injection
- Two-speed fan with 3/4 HP motor
- All stainless construction
- Stainless steel oven interior with coved corners
- Shower stall style cavity base with drain
- Single door with "Split" window for easy cleaning
- Quartz illumination
- 24" cooking cavity height
- Six oven racks with 13 position rack guides
- Service accessibility from front (all but water system)
- "Pull-Out" control section for easy maintenance & service
- Double stack model available
- One year limited parts and labor warranty

Optional Features:

- Deluxe microprocessor control, (temperature range; 150°F/66°C - 500°F/260°C), with 9 programmable recipe keys, Cook & Hold, 100-hour timer, and programmable moisture injection.
 - External temperature core probe for roasting applications
 - Wet-clean, on-board spray hose system
 - Extra oven racks
 - Stainless steel back enclosure
 - Stainless steel open base with rack guides and shelf
 - Deck fasteners
 - Attachment for "roof mounting" of Cleveland Steamcraft Steamer, (part # 1951241)
 - Swivel casters with front brakes
 - Lo-profile casters with front brakes (double ovens only)
- Note: Ovens supplied with casters must be installed with an approved restraining device.

Maximum security package:

- Solid stainless steel door
 - Stainless steel, lockable control panel cover
 - Perforated stainless steel back/motor cover
 - Tamper-proof screws with tool kit #1951220
- Note: Wet-clean, on-board spray system not available with maximum security option

Specify:

- MP-ES-10-S: Standard Depth Electric
- MP-ED-10-S: Deep Depth Electric
 - 11kW loading, 208 Volt, 3 Phase wiring
 - 11kW loading, 240 Volt, 3 Phase wiring
 - 11kW loading, 460 Volt, 3 Phase wiring

Garland Commercial Industries, Inc.
 185 East South Street
 Freeland, Pennsylvania 18224
 Phone: (570) 636-1000
 Fax: (570) 636-3903

Garland Commercial Ranges Ltd
 1177 Kamato Road, Mississauga, Ontario
 L4W 1X4 CANADA
 Phone: 905-624-0260
 Fax: 905-624-5669

Enodis UK LTD
 Swallowfield Way, Hayes, Middlesex
 UB3 1DQ ENGLAND
 Telephone: 081-561-0433
 Fax: 081-848-0041



GARLAND®

Item #: _____

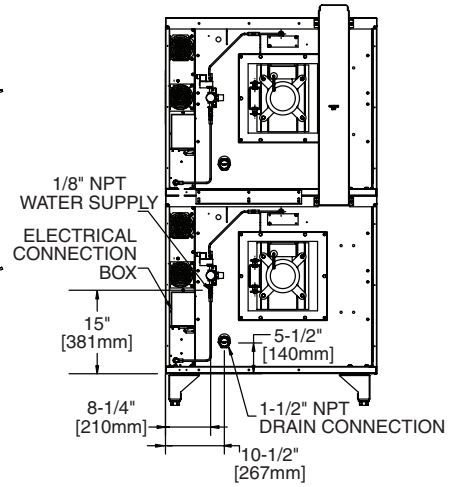
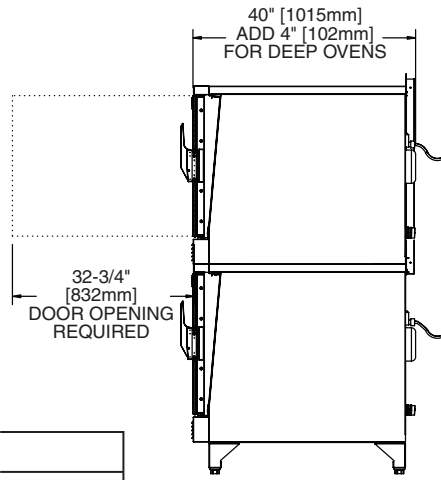
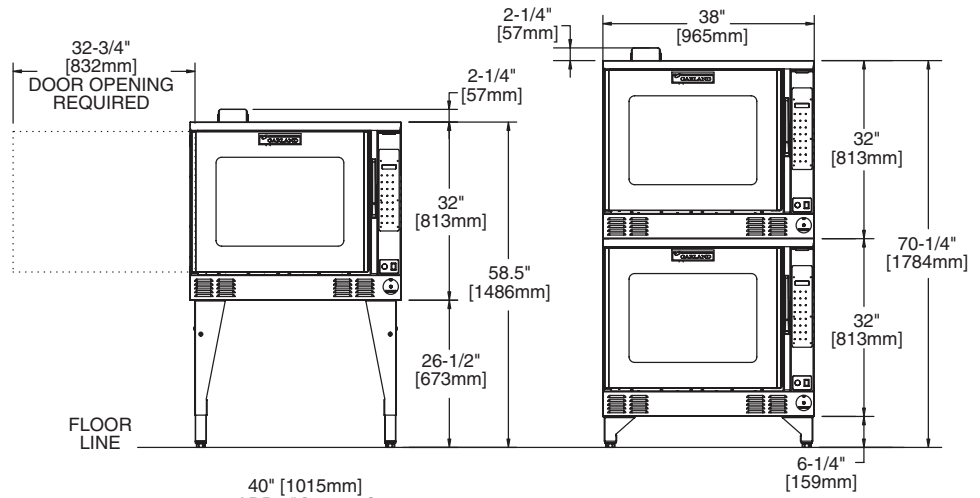
Model: MP-ES/ED-10/20-S

Product Name: Moisture Plus

Standard Electric Oven

Installation Notes:

- Motor: 3/4 HP, two speed, 1140/1725 rpm
- Each oven deck requires a separate electrical connection
- Customer must provide a 1/8" NPT water connection capable of 20 PSI*
- Garland recommends the minimum water quality standards, whether treated or pre-treated and based on 10 hours of use per day, and daily cleaning/descaling, to be: total dissolved solids <60 ppm, total alkalinity <20 ppm, silica <13 ppm, chlorine <30 ppm, and a pH factor greater than 7.5*
- Customer must provide a floor drain or similar device*



Clearances			
Installation		Entry	
Sides	Rear	Crated	Uncrated
1" (25mm)	3" (76mm)	44-1/2" (1130mm)	32-1/2" (826mm)

Model	Oven Interior: In. (mm)			Exterior : In. (mm)			Ship Wt. lbs/kgs	Ship Size Cu Ft
	Width	Height	Depth	Width	Height**	Depth		
MP-ES-10-S	29 (736)	24 (610)	24 (610)	38 (965)	60-3/4 (1543)	40 (1016)	510/232	42
MP-ES-20-S			72-1/2 (1842)		1024/464		84	
MP-ED-10-S			28 (711)		60-3/4 (1543)	44 (1118)	510/232	42
MP-ED-20-S			72-1/2 (1842)		1024/464		84	

** Height with or without standard casters. Height with lo-profile casters (double deck) is 70" (1778mm).

kW	Total kW/Line				Nominal Amperes Per Line					
	208/240/460			120V 1 Ph	208V 1Ph	240V 1 ph	460V 1 Ph	208V 3 Ph X/Y/Z	240V 3 Ph X/Y/Z	460V 3 Ph X/Y/Z
	X-Y	Y-Z	X-Z							
11	3.33	3.33	4.33	N/A	53	46	24	31.8/27.7/31.8	27.6/24.0/27.6	10.5/9.5/10.5

Electrical specifications are per-oven, and include motor requirements.

* Consult a local water treatment specialist for an on-site water analysis for recommendations concerning feed water treatment (if required), in order to remove or reduce harmful concentrations of minerals. The use of highly mineralized water will cause more frequent cleaning and reduce operating efficiency. The fact that a water supply is potable is not proof that it will be suitable for moisture mode operation. Component failure/service related to poor water quality will not be covered under warranty.

This oven must be installed to comply with the applicable federal, state, or local plumbing codes.

Continuous product improvement is a Garland policy. Design and specifications are subject to change without notice.

Printed in USA

Form # MPE10S(05/07)