



Item #: _____
 Model: CPO-ES-12H
 Product Name: Electric Counter Top Pizza Oven
 w/2 Hearths



Model CPO-ES-12H

Specification:

Garland Model Number CPO-ES-12H, electric counter top pizza oven. Compact 22-1/2"W x 23-1/2"D size includes a two decks with hearths. Stainless steel exterior. 650°F, (343° C) adjustable electromechanical thermostat and mechanical 15-minute timer. 120, 208, or 240 volt, single phase, (please specify). **Ideal for pre-baked dough.**

Standard Features:

- Incoloy tubular heating elements; total 1.8kW, (120-volt model), or 2.85kW, (208/240-volt models)
- 650°F, (343°C), adjustable, electro-mechanical thermostat
- 15-minute mechanical timer
- 3" crown heights
- Oven ready light indicates oven has reached selected temperature, one per oven cavity
- 1½" thick insulation in walls, top, and doors
- 2 removable baking hearths
- All stainless steel finish
- Standard with 6-ft. (1.8m) long cord and plug (single-phase models only)
- 120, 208, or 240 volts, single phase (please specify)
- One-year parts and labor warranty

Optional Features:

- 4" adjustable legs
- 60-minute timer

Capacity:

- Two (2) 16" pre-baked crust pizzas, (not designed for fresh dough or pan pizza)



Garland Commercial Industries, Inc.
 185 East South Street
 Freeland, Pennsylvania 18224
 Phone: (570) 636-1000
 Fax: (570) 636-3903

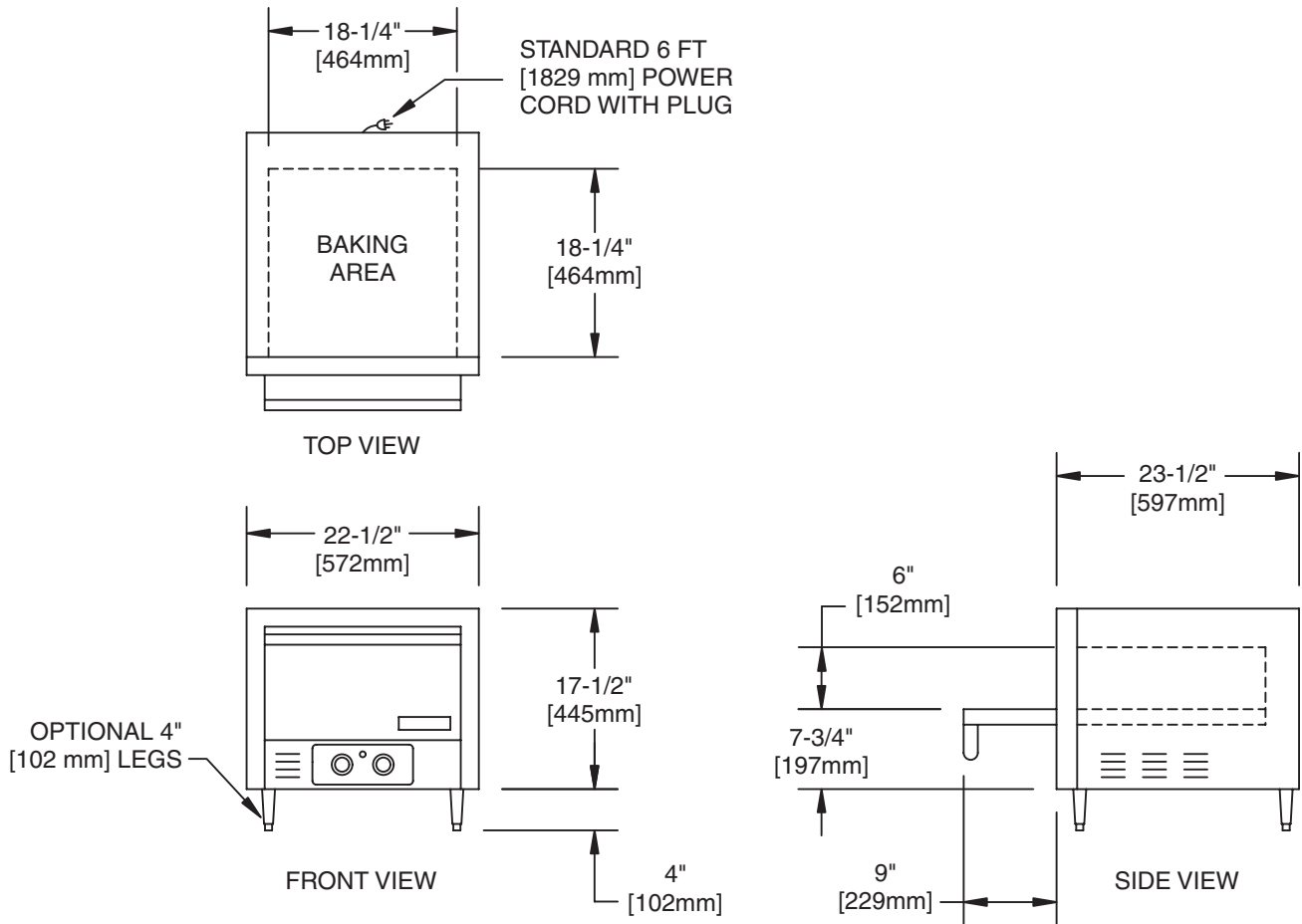
Garland Commercial Ranges Ltd
 1177 Kamato Road, Mississauga, Ontario
 L4W 1X4 CANADA
 Phone: 905-624-0260
 Fax: 905-624-5669

Enodis UK LTD
 Swallowfield Way, Hayes, Middlesex
 UB3 1DQ ENGLAND
 Telephone: 081-561-0433
 Fax: 081-848-0041

GARLAND® ELECTRIC Counter Top Pizza Oven w/2 Hearths Model: CPO-ES-12H



Item #: _____
 Model: CPO-ES-12H
 Product Name: Electric Counter Top Pizza Oven
 w/2 Hearths



Electrical Specifications					
Voltage	Phase	kW	Nominal Amperes	NEMA Plug	Connection Type
120	1	1.8	15.0	5-15P	6' Line Cord
208	1	2.85	13.7	6-15P	6' Line Cord
240	1	2.85	11.9	6-15P	6' Line Cord

Dimensions					Clearances				Ship Weight
Exterior			Interior (hearth area)		Installation		Entry		
H	W	D	W	D	Sides	Rear	Crated	Uncrated	
17-1/2" (445mm)	22-1/2" (572mm)	23-1/2" (597mm)	18-1/4" (464mm)	18-1/4" (464mm)	1" (25mm)	1" (25mm)	32" (813mm)	27-1/2" (699mm)	127lbs. (58kg)

Continuous product improvement is a Garland policy, therefore design and specifications are subject to change without notice.