



***GARLAND MODEL
E18 Electric Fryers***

PARTS LIST

Toll Free Phone, (US & Canada): (800) 427-6668

Toll Free Fax, (US & Canada): (800) 361-7745

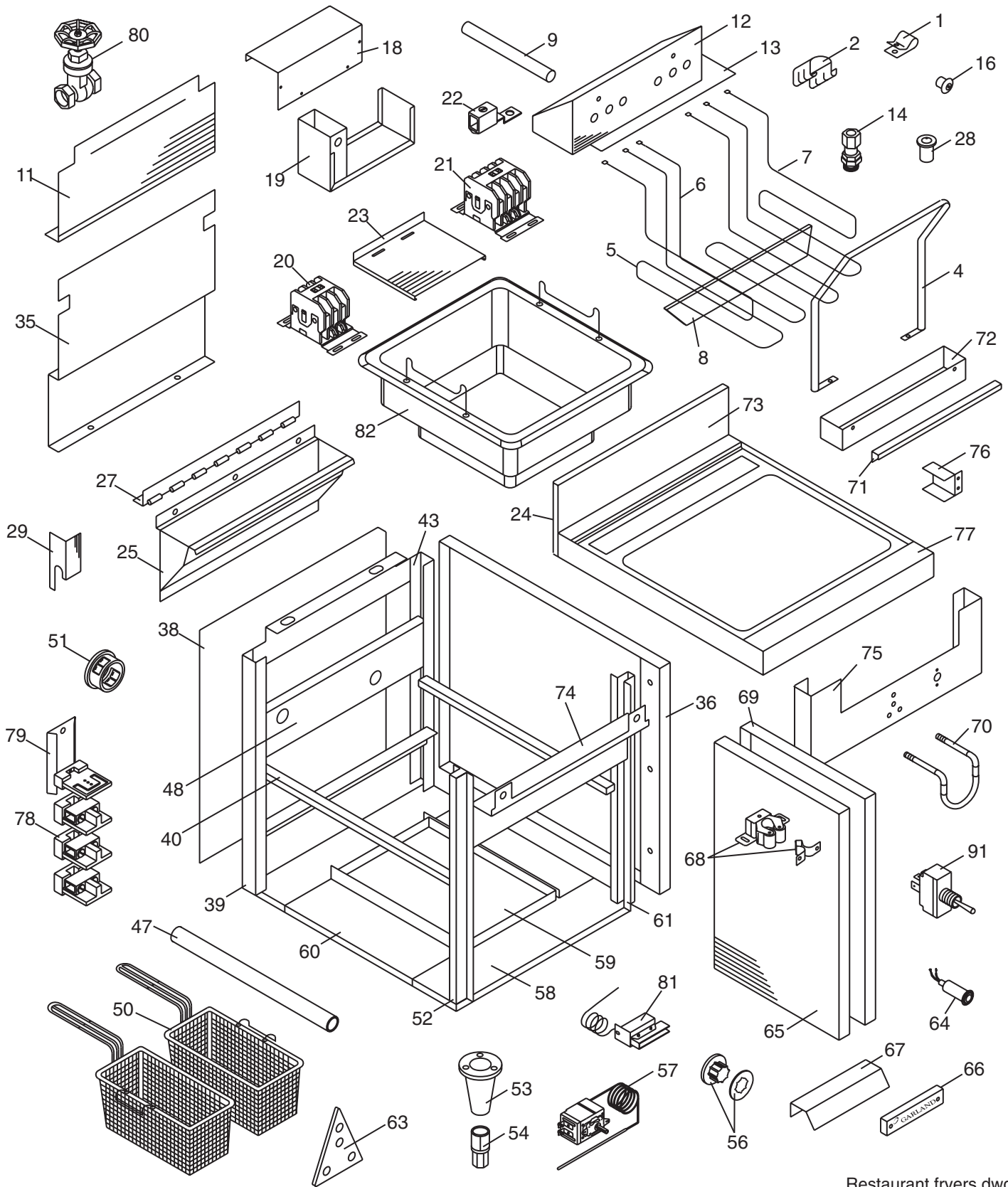
<http://www.garland-group.com>



GARLAND MODEL E18 Electric Fryers

Contents:

Fryers Models E18F,SF,FBL And SFBI.....	Page 4
Digital Photos	Page 8
Revision History.....	Page 9



Restaurant fryers.dwg

GARLAND PARTS IDENTIFICATION

Fryers Models E18F,SF,FBL And SFBL

ITEM	PART #	DESCRIPTION	MODEL			
			QUANTITY			
			E18F	E18SF	E18FBL	E18SFBL
1	GF141	Clamp-Tube Tinnerman	2	2	2	2
2	GF139	Clamp Tinnerman	4	4	4	4
3*	G0599-1-9	Frytank Cover (Optional)	1	1		
4	G02099-1	Element Lifting Handle NI. PLT	1	1	1	1
5	G1551-2	Element L/H 208V,4KW	1		1	
	G1551-4	Element L/H 240V,4KW	1		1	
	G1551-12	Element L/H 208V,4.5KW		1		1
	G1551-14	Element L/H 240V,4.5KW		1		1
	G1551-10	Element L/H 440/480V,4KW	1			
	G1551-16	Element L/H 440/480V,4.5KW		1		
6	G1550-1	Element Center 208V,4KW	1		1	
	G1550-2	Element Center 240V,4KW	1		1	
	G0476-01	Element Center 208V,7KW		1		1
	G0476-02	Element Center 240V,7KW		1		1
	G1550-5	Element Centre 440/480V,4KW	1			
	G0476-03	Element Centre 440V/480V,7KW		1		
7	G1551-1	Element R/H 208V,4KW	1		1	
	G1551-3	Element R/H 240V,4KW	1		1	
	G1551-11	Element R/H 208V,4.5KW		1		1
	G1551-13	Element R/H 240V,4.5KW		1		1
	G1551-9	Element R/H 440/480V,4KW	1			
	G1551-15	Element R/H 440/480V,4.5KW		1		
8	G1570-1-9	Tie Bar Support	1	1	1	1
9	G01922-8	Vinyl Tube 1/2	6	6	6	6
10*	G02504-460	Transformer 460V (High Voltage Only)	1	1		
11	G02305-1-7	Wire Shield	1	1	1	1
12	G1565-1-8P	Element Panel Support Plated	1	1		
	G1565-02-8P	Element Panel Support Assembly			1	1
13	G02275-1	Fish Paper - .030 Thick	1	1		
14	G1156-1	Straight Thru Fitting	6	6	6	6
15*	G01102-1	Roller Basket Lift #8100194			2	2
16	G1155-1	Black PVC Grommet #315-463	2	2	2	2
17*	G01071-1-9	Roller Support Arm			2	2
18	G02303-1-7	Contacto Enclosure Cover	1	1	1	1
19	G02302-01-7	Contacto Enclosure Assembly	1	1	1	1
20^	1489701	Contacto 3 Pole 208/240V 40A	1	1	1	1
21	1489801	Contacto 4 Pole 208/240V 40A	1	1	1	1
22	G01499-1	Ground Terminal 105A Large SLU-70	1	1	1	1
23	1489900	Contacto Support	1	1	1	1
24	G02310-1-8	Backsplash Std	1	1	1	1
25	G0547-01-8	Rotating Head Assembly	1	1	1	1
26*	G01501-3	Foam Tape 50" OF M1	1	1	1	1
27	G0548-1-8P	Rotating Head Hinge Plated	1	1	1	1
28	G02156-1	Rotating Head Latch Return	1	1	1	1
29	G02154-1-9	Rotating Head Latch	1	1	1	1
30*	G01062-1-8P	Lift Rod Plated			2	2
31*	G01641-1	Conduit Bushing 3/4			4	4
32*	G01642-1	Conduit Locknut 3/4			2	2

* NOT ILLUSTRATED

^ DIGITAL PHOTO AT END

RECOMMENDED STOCK PARTS

GARLAND PARTS IDENTIFICATION

Fryers Models E18F,SF,FBL And SFBL

ITEM	PART #	DESCRIPTION	MODEL			
			QUANTITY			
			E18F	E18SF	E18FBL	E18SFBL
33*	G01640-01-5	Bearing & Sleeve Assembly			2	2
34*	G01064-2-7	Bearing Support			2	2
35	G02306-1-8	Motor Cover			1	1
36	G02292-1-8	Main Side Std	2	2	2	2
	G02292-1-9	Main Side S/S	2	2	2	2
37*	G01076-03-82P	Basket Support Arm Assembly			1	1
	G01076-03-81P	Basket Support Arm Assembly			1	1
38	G02298-1-8	Main Back Std	1	1	1	1
39	G02287-1-82	Rear Frame Side Support	1	1	1	1
40	G02297-1-8	Frytank Slide	2	2	2	2
41*	G01137	Micro Switch			2	2
42*	G01061-2-7	Drive Bar			2	2
43	G02287-1-81	Rear Frame Side Support				
44*	G01103-1	Bell Crank			2	2
45*	G01136-2	Motor 208/240V			2	2
46*	G01060-1-7	Motor Mount Plate			2	2
47	G02304-1-8	Wire Way	1	1	1	1
48	G02289-01-8	Contacto Mounting Plate A	1	1	1	1
50	G02698-2	Basket Twin L/H	1	1		
	G02698-1	Basket Twin R/H	1	1		
	G02699-1	Basket Single	1	1		
	G01075-1-8	Twin Basket E18BL 10-31BL			2	2
51	G01487-3	Heyco Bushing 7/8IDX1 39/64OD	2	2	2	2
	1028802	Heyco Bushing	1	1	1	1
52	G02285-1-82	Front Frame Side L/H	1	1	1	1
53	1027600	Leg Retainer 6" (Std.)	4	4	4	4
	2093800	Leg Retainer 4" (Opt.)	4	4	4	4
54	1150502	Bullet Leg	4	4	4	4
55*	G02721	Timer 208/240	2	2		
	G03688-1	Dial 15 Minute Std	2	2		
	G03688-2	Dial 18 Minute (EXPORT)	2	2		
56	G02716-1	Dial - (Universal) Small Shaft	1	1	1	1
	G02725-20	Dial Insert (OFF/200F/375F)	1	1	1	1
	G02725-12	Dial Insert (OFF/95C/190C)	1	1	1	1
57^	G02319-01	Fryer Thermostat 200F-375F 4 Terminals	1	1	1	1
58	2064099	Main Bottom Assembly	1	1	1	1
	2063800	Bottom Channel	2	2	2	2
59	G02300-1-8	Gresae Pan	1	1	1	1
60	G02299-1-81	Grease Pan Guide	2	2	2	2
61	G02285-1-81	Front Frame Side R/H	1	1	1	1
62*	G02309-01-9	Door Hinge A	2	2	2	2
63	G02500-1	Pilot & Switch I.D. Plate	1	1	1	1
64	G01296-1	Pilot Red 240V	1	1	1	1
	G01296-2	Pilot Amber	1	1	1	1
	G01296-3	Pilot Green	1	1	1	1
65	G02308-1-8	Door Lining	1	1	1	1
66	1902918	Nameplate - GARLAND 7 3/4	1	1	1	1

* NOT ILLUSTRATED

^ DIGITAL PHOTO AT END

RECOMMENDED STOCK PARTS

GARLAND PARTS IDENTIFICATION

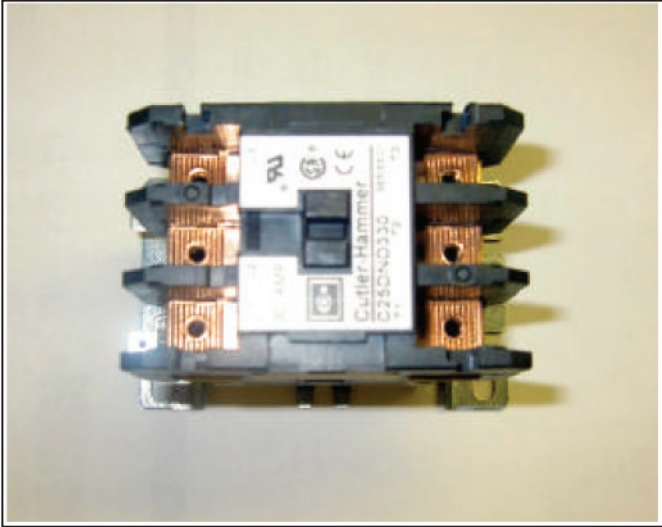
Fryers Models E18F,SF,FBL And SFBL

ITEM	PART #	DESCRIPTION	MODEL			
			QUANTITY			
			E18F	E18SF	E18FBL	E18SFBL
67	2533900	Door Handle	1	1	1	1
68	2671600	Catch-Double Roller #603-2G	1	1	1	1
69	2174800	Door Panel	1	1	1	1
70	G0728-1-8P	Therm. Guard-Plated C/W Nut Optional	1	1	1	1
71	G02453-1-9	Grease Pan Handle	1	1	1	1
72	G02452-1-8	Grease Pan	1	1	1	1
73	G02702-1-9	Backsplash Front	1	1	1	1
74	G02286-1-8	Front Frame Top	1	1	1	1
75	G02317-2-9	Switch Panel	1	1		
	G02317-1-9	Switch Panel	1	1		
76	G02451-1-7	Grease Pan Guide	2	2	2	2
77	G02295-01-8P	Main Top Assembly (Plated)	1	1		
	G02295-02-8P	Main Top Assembly (Plated)			1	1
78	G01268-1	Terminal Block #824 Export	3	3	3	3
	G01268-1	Terminal Block #824 Export	5	5	5	5
	G01268-2	Terminal Block End #830	1	1	1	1
79	G01280-3-7	Terminal Block Channel 3 LUG Domestic	1	1	1	1
	G01280-5-7	Terminal Block Channel 5 LUG Export	1	1	1	1
80	G2941-1P	Valve 1" Gate - Plated	1	1	1	1
81	2113600	H Lmt Thermostat	1	1	1	1
82	G02692-01-8P	Frytank Assembly (Plated) W/Drain	1	1	1	1
	G02692-02-8P	Frytank Assembly (Plated) No Drain	1	1	1	1
90*	GF58	Screw 3/8 X1/4Shldr 5/16-18THD			4	4
91	G02320-1	Toggle Switch	1	1	1	1

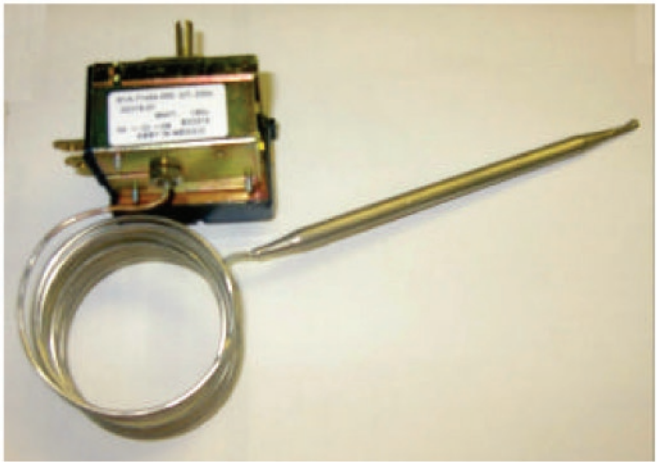
* NOT ILLUSTRATED

^ DIGITAL PHOTO AT END

RECOMMENDED STOCK PARTS



1489701 = CONTACTOR 3 POLE 208/240V



G03319-01 = FRYER THERMOSTAT

GARLAND PARTS IDENTIFICATION

Revision History

REV. #	PAGE #	ITEM #	NOTE	DATE
1	7	67, 74	Asterisk Deleted	Nov 16/04
	4	49	Item Number Deleted	
	8		Digital Photos Added	

NOTES

NOTES

 **GARLAND**[®]