



*Model ECG-48R
(Shown on optional stand)*

Specification:

Heavy-duty electric griddles, available in five sizes, 24" 36", 48", 60" & 72" wide. High performance, volume production with even, consistent, controlled temperatures One-inch (25mm) thick griddle plate. Electronic thermostat with embedded sensor and three efficient flat bar heating elements per 12" (305mm) of griddle width. All stainless steel exterior. Full-width front rail, high capacity, sloped bottom grease drawers. 6" (152mm) legs standard, or optional stand.



NOTE: Griddles supplied with casters must be installed with an approved restraining device.

Standard Features:

- Full-width front rail
- Rear grease trough with bottom drawer
- Three (3) flat bar heating elements, (4.3 kW total), per 12" (305mm) of griddle width
- 208 or 240 volt models
- Electric main on/off power switch w/indicator light, (green)
- On/off switch for each thermostat
- Electronic thermostat, (150°F/66°C - 450°F/232°C), for each 12" (305mm) heat zone
- "Heat-On" indicator light, (amber)
- Stainless Steel sides
- Stainless steel front panel
- Stainless steel backguard
- Stainless steel grease trough
- Stainless steel side griddle splashguards
- Stainless steel 6" (152mm) deep, sloped grease drawers with integral grease baffles
- 6" (152mm) stainless steel adjustable legs
- Nickel-plated thermostat guards
- Eight-inch high backsplash
- Contoured grease chute opening
- 6' (1829mm) cord and plug standard on 24" - 48" 3-phase models and on 24"-240V, single-phase models. Others available upon request

Optional Features (No Charge):

- Export voltages, (220/240V/50Hz), available upon request, direct connection to junction box is required. No cord and plug are included.
- 10-1/2" (266mm) deep grease drawers, no charge (stand models only)

Optional Features (Additional Charge):

- All stainless steel open stand, 30.292" (769mm) high with bottom shelf and adjustable legs
- Set of four, (4) swivel casters, (front locking), for stainless steel stand

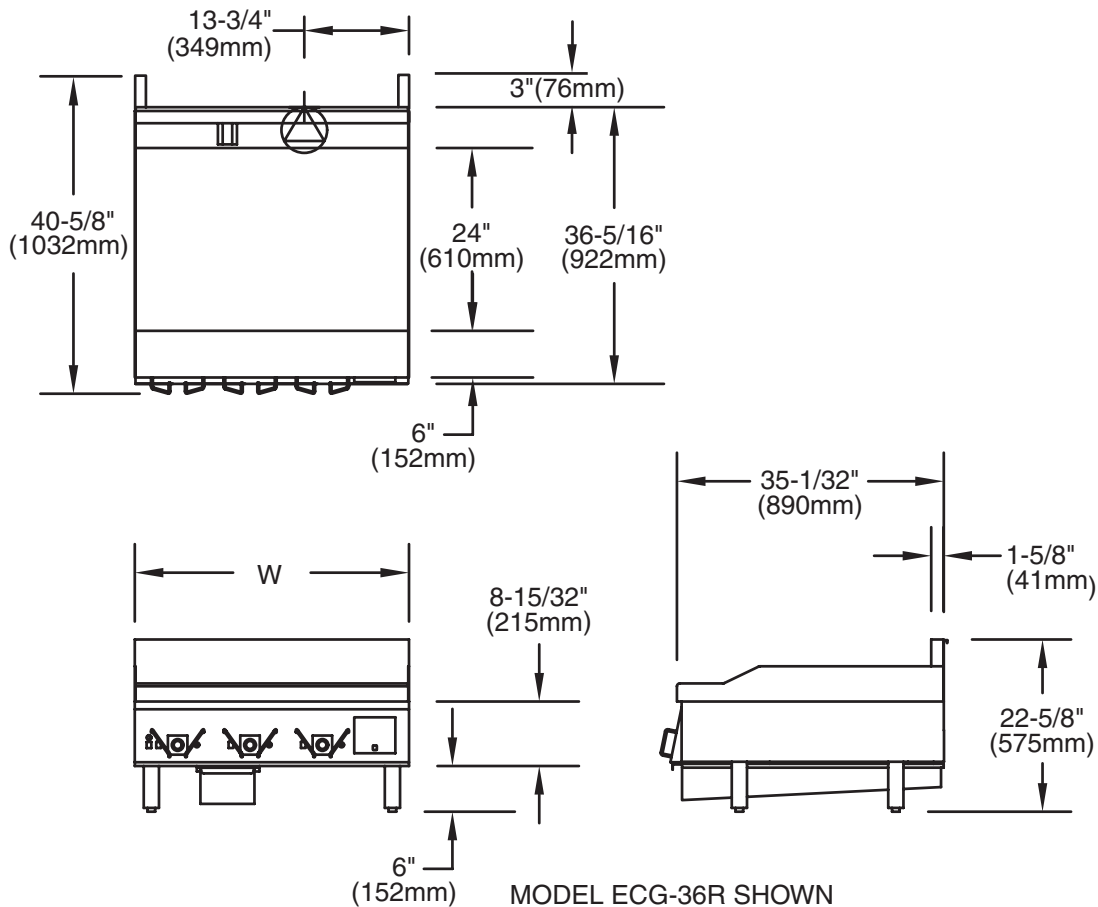
Garland Commercial Industries, Inc.
 185 East South Street
 Freeland, Pennsylvania 18224
 Phone: (570) 636-1000
 Fax: (570) 636-3903

Garland Commercial Ranges Ltd
 1177 Kamato Road, Mississauga, Ontario
 L4W 1X4 CANADA
 Phone: 905-624-0260
 Fax: 905-624-5669

Enodis UK LTD
 Swallowfield Way, Hayes, Middlesex
 UB3 1DQ ENGLAND
 Telephone: 081-561-0433
 Fax: 081-848-0041



Item #: _____
 Models: ECG-24/36/48/60/72R
 Product Name: Master Electric
 Production Griddle



Model	Width (W)	Voltage	Total kW Load	Load Per Phase			Amps Per Phase			Amps 1 phase	Shipping Wt.
				X-Y	X-Z	Y-Z	X	Y	Z		
ECG-24R	24" (610mm)	208.0	8.60	2.60	3.00	3.00	22.3	23.3	25.0	41.3	265 lbs. (120kg)
		240.0	8.60	2.60	3.00	3.00	20.2	20.2	21.7	35.8	
ECG-36R	36" (914mm)	208.0	12.90	4.30	4.30	4.30	35.8	35.8	35.8	62.0	400 lbs. (181 kg)
		240.0	12.90	4.30	4.30	4.30	31.0	31.0	31.0	53.8	
ECG-48R	48" (1219mm)	208.0	17.20	5.60	6.00	5.60	48.3	46.6	48.3	82.7	500 lbs. (227 kg)
		240.0	17.20	5.60	6.00	5.60	41.9	40.4	41.9	71.7	
ECG-60R	60" (1524mm)	208.0	21.50	6.90	7.30	7.30	59.1	59.1	60.8	103.4	600 lbs. (277 kg)
		240.0	21.50	6.90	7.30	7.30	51.2	51.2	52.7	89.6	
ECG-72R	72" (1929mm)	208.0	25.80	8.60	8.60	8.60	71.6	71.6	71.6	124.0	700 lbs. (318 kg)
		240.0	25.89	8.60	8.60	8.60	62.1	62.1	62.1	107.5	

Flat blade NEMA plugs available:



NEMA 15-30P

ECG-24R
240v, 3ph



NEMA 15-50P

ECG-24R 208V, 3ph
ECG-36R 208V, 3ph
ECG-36R 240V, 3ph



NEMA 15-20P

ECG-48R
208/240V, 3ph



NEMA 8-50P

ECG-24R 240V, 1ph
(208V requires
60A locking plug)

CLEARANCES

Installation

Sides	Back
6" (152mm)	6" (152mm)
Entry	
Crated	Uncrated
40" (1016mm)	38" (965mm)