

PLANETARY DOUGH MIXER

SM200, 201, 300, 401, 402NA

IMPORTANT SAFETY INSTRUCTIONS
SAVE THESE INSTRUCTIONS

DANGER
TO REDUCE THE RISK OF FIRE OR ELECTRIC SHOCK,
CAREFULLY FOLLOW THESE INSTRUCTIONS

TABLE OF CONTENTS

<u>SECTION « A » DESCRIPTION</u>	<u>PAGE</u>
Installation and maintenance	A1
Construction and shipping	A2
Warnings	A3
SM mixers chart	A4
Installation and operation	A5
Troubleshooting	A6
Mixer cleaning and maintenance	A7
Planetary dough mixer description	A8
Installation of vegetable or meat cutter attachment	A9
For more information, please call our office	A13
 <u>SECTION « B » DIMENSIONS</u>	
SM200	B1
SM201	B2
SM300	B3
SM401	B4
SM402NA	B5
 <u>SECTION « E » COMPONENT PARTS</u>	
SM200	E1
SM201	E4
SM300	E9
SM401	E13
SM402NA	E16
 <u>SECTION « G ». ELECTRIC SCHEMATICS</u>	
SM200 & SM201 120 Volts 60 Hz	G1
SM300 120 Volts 60 Hz	G2
SM401 120 Volts 60 Hz	G3

SM201 & 401 220 Volts 50/60 Hz	G4
SM402NA 220 Volts 50/60 Hz	G5
Warranty	

FAMMIX-A.DOC

REV. 10 OCT. 2006

INSTALLATION AND MAINTENANCE MANUAL

The manufacturer suggests reading this manual carefully.

The planetary dough mixer is manufactured with first quality materials by experienced technicians. Normal use and adequate maintenance will guarantee a reliable service for years to come.

The planetary dough mixer is available in five different models: SM200, 20 quart with hub attachment. SM201, 20 quart without hub attachment. SM300, 30 quart with hub attachment. SM401, 40 quart without hub attachment. SM402NA, 40 quart with hub attachment.

A nameplate fixed to the side of the mixer specifies the serial number, model number, amperage, voltage and frequency.

Drawings, electrical diagrams, and replacement part numbers are included in this manual.

ATTENTION

ÉQUIPMENT DOYON INC. is not responsible for damages to the property or the equipment caused by non-certified personnel. The customer is responsible for finding a qualified electrician for the installation of the slicer.

CONSTRUCTION

You now have the most performant planetary dough mixer on the market in its category. This planetary mixer is manufactured using the highest quality components and materials.

SHIPPING

For your safety, this equipment has been verified by qualified technicians and carefully crated before shipment. The freight company takes full responsibility for the delivery of this equipment in good condition, by accepting to transport it.

IMPORTANT

RECEPTION OF THE MERCHANDISE

Make sure to verify that the received equipment is not damaged before signing the delivery receipt. If damage or loss is noticed, write it clearly on the receipt and have the carrier sign it. If the damage is noticed after the carrier left, contact the freight company immediately so that they may inspect it.

We do not take responsibility for damages or losses that may occur during transportation.

WARNING

FOR YOUR SAFETY

**BEFORE CLEANING OR ANY MAINTENANCE PROCEDURE
MAKE SURE THE MAIN POWER IS OFF.**

IMPORTANT

INSTALLATION AND SERVICE

A qualified technician must do servicing.

The mixer must be connected to the utility and electrically grounded in conformity to the effective local regulations. If these are not established, the oven must be connected according to the Canadian Electrical Code (CSA-C22.1-XX) or National Electrical Code (NFPA 70-XX). Refer to last edition year for XX.

SM MIXERS CHART

	Tool	SM402NA	SM401	SM300	SM201	SM200
Bowl capacity (qts or liters)		40	40	30	20	20
Standard #12 attachment hub		yes	no	yes	no	yes
Transmission driven by		Belt	Belt	Gear	Belt	Gear
		Dough weight				
Cake	Falt beater	45 lb/20kg	30lb/13.5kg	25lb/11.3kg	20lb/9kg	20lb/9kg
Sponge cake	Whip	30lb/13.5kg	20lb/9kg	18lb/8kg	12lb/5.4kg	12lb/5.4kg
Bread dough 60%AR	Hook	35lb/15.5kg	30lb/13.5kg	25lb/11.3kg	18lb/8kg	18lb/8kg
Whole wheat dough 50%AR	Hook	35lb/15.5kg	20lb/9kg	15lb/6.8kg	10lb/4.5kg	10lb/4.5kg
Whole wheat dough 70%AR	Hook	40lb/18kg	30lb/13.5kg	25lb/11.3kg	15lb/6.8kg	15lb/6.8kg
Donut dough 65%AR	Hook	35lb/15.5kg	20lb/9kg	15lb/6.8kg	7 lb/3.2kg	7 lb/3.2kg
Pizza dough (thin) 40% AR	Hook	25lb/11.3kg	15lb/6.8kg	10lb/4.5kg	5 lb/2.3kg	5 lb/2.3kg
Pizza dough 45% AR	Hook	27lb/12.2kg	18lb/8kg	12lb/5.4kg	7 lb/3.2kg	7 lb/3.2kg
Pizza dough (med) 50% AR	Hook	30lb/13.6kg	20lb/9kg	15lb/6.8kg	10lb/4.5kg	10lb/4.5kg
Pizza dough (thick) 60% AR	Hook	35lb/15.8kg	25lb/11.3kg	20lb/9kg	15lb/6.8kg	15lb/6.8kg
<p>% AR(ABSORPTION RATIO) =WATER WEIGHT (lbs) DIVIDED BY FLOUR WEIGHT(lbs) CAPACITY DEPENDS ON MOISTURE CONTENT OF DOUGH . ABOVE CAPACITIES ARE BASED ON 12 % FLOUR MOISTURE AT 70°F (21°C) WATER TEMPERATURE.</p> <p>1 US GALLON OF WATER = 8.33 lbs (3.8kg) 1 CANADIAN GALLON OF WATER =10 lbs (4.5kg)</p> <p>DROP THE ABOVE CHART BY 10% WHEN YOU USE HIGH GLUTEN FLOUR FOR EXAMPLE: YOU ARE USING 1/2 WATER US GALLON & 12lbs FLOUR</p> <p>$8.33\text{lbs} \div 2 = 4.17\text{lbs}$, $4.17\text{lbs WATER} \div 12\text{lbs FLOUR} = 0.35$ THAT MEANS YOU WILL HAVE A 35% DOUGH (AR)</p>						
NOTE:						
<ul style="list-style-type: none"> • HUB ATTACHMENT SHOULD NOT BE IN PLACE WHILE MIXING. • MUST MIX PIZZA DOUGH ON FIRST GEAR ONLY. • 2ND SPEED SHOULD NEVER BE USED ON 50% AR OR LOWER PRODUCTS 						

INSTALLATION

IN GENERAL

Open the crate and remove all materials used for packing as well as the accessories.

Put the mixer on a straight floor and make sure the mixer is level.

Each unit is set up to be used with the electrical supply specified on the nameplate fixed on the side of the mixer.

To the electrician

The electrical supply installation must be in accordance with the electrical rating on the nameplate.

PLANETARY DOUGH MIXER OPERATION

1. Put your dough recipe in the bowl.
2. Put the bowl in place on the mixer.
3. Install the proper agitators.
4. Pull up the lift bowl handle.
5. Close the bowl guard.
6. Set the proper speed.
7. Pull the stop switch.
8. Push the start switch to start the mixer.
9. To change speed, turn the motor off. Allow the planetary to stop rotating, move speed selector handle at the desired speed and restart the mixer. If you can not change the speed, put the speed selector handle at neutral position (between two speeds), start and stop the mixer and change speed before the mixer is almost stop.
- 10. NEVER CHANGE THE SPEED WHEN THE MIXER WORKS.**
- 11. IF YOU OPEN THE BOWL GUARD OR PUSH DOWN THE BOWL, THE MIXER WILL AUTOMATICALLY STOP.**

WARNING

**NEVER TRY TO PUT YOUR HAND IN THE BOWL WHEN THE MIXER IS ON.
ALWAYS DISCONNECT THE ELECTRICAL CORD OR MAIN POWER BRAKER.**

POWER FAILURE

With security bowl guard .When you have a power failure you don't have to switch off the mixer. It will not start working when the power comes back on.

Without security bowl guard .When the power comes back on, the mixer will start automatically if it was on before the power failure. It is necessary to put the switch to « OFF » so that the mixer does not start without supervision.

TROUBLESHOOTING
BEFORE CALLING FOR SERVICE
ANSWERS TO MOST FREQUENT QUESTIONS

Always cut the main power off before replacing any parts.

Questions	Solutions
The mixer does not turn on when powered.	Check if the electric cord is connected. Check the breaker of the building. Check the breaker on the back of the mixer. Check if the stop switch is pulled out. Check if the bowl guards are closed properly. Check if the bowl lift is up. If the mixer is still not working, call a technician or call us.
The breaker comes off.	Check your dough recipe, you might have put too much dough for the mixer. If the breaker still come off, call a technician.

MIXER CLEANING AND MAINTENANCE

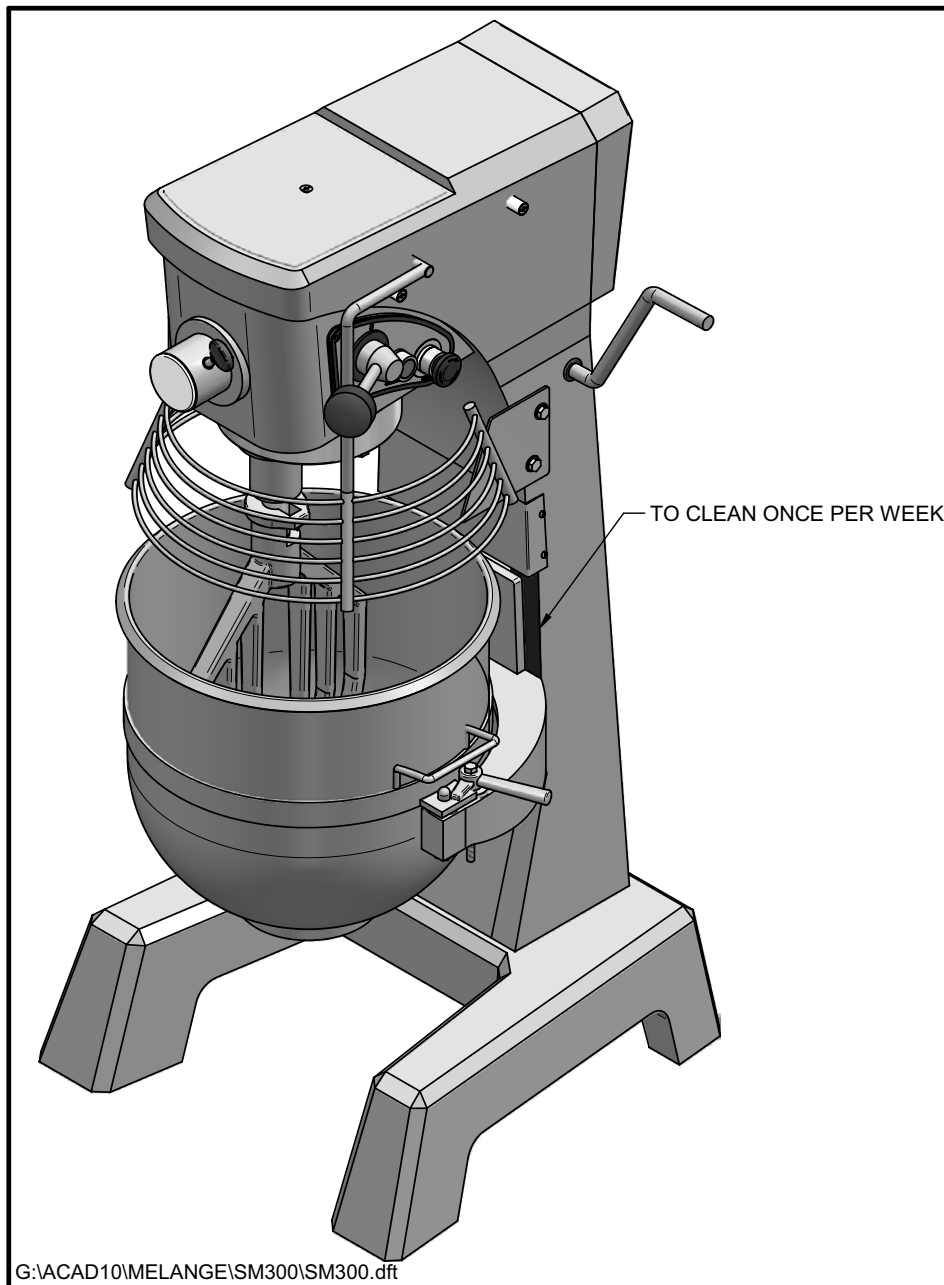
LUBRICATION

The motor has grease-packed ball bearings and requires little attention. The transmission gearing is packed with special grease that will last for several years. When grease is needed for replacement, it should be ordered from our factory.

The bowl lift are to be lubricated once a month with vegetable grease.

CLEANING

We recommend cleaning the mixer and agitators every time you finish the production.



PLANETARY DOUGH MIXER DESCRIPTION

SM200

20-quart mixer with stainless steel bowl, hook, beater and whip
 Security bowl guard with Hub attachment for meat grinder and vegetable cutter.
 Motor: 1/2 HP.120 Volts 12 Amp. 60 Hz NEMA 5-15P.
 Transmission engages by gear.
 Weight: 250 pounds.
 Finish dough capacity: 4.5 kilo (10 pounds).

SM201

20-quart mixer with stainless steel bowl, hook, beater and whip
 Security bowl guard without Hub attachment for meat grinder and vegetable cutter.
 Motor: 1/2 HP.120 Volts 8 Amp. 60 Hz NEMA 5-15P.
 Transmission engages by timing belt.
 Weight: 250 pounds.
 Finish dough capacity: 4.5 kilo (10 pounds).

SM300

30-quart mixer with stainless steel bowl, hook, beater and whip
 Security bowl guard with Hub attachment for meat grinder and vegetable cutter.
 Motor: 1 HP.120 Volts 16 Amp. 60 Hz NEMA 5-20P.
 Transmission engages by gear.
 Weight: 350 pounds.
 Finish dough capacity: 6.8 kilo (15 pounds).

SM401

40-quart mixer with stainless steel bowl, hook, beater and whip
 Security bowl guard without Hub attachment for meat grinder and vegetable cutter.
 Motor: 1 HP.120 Volts 14 Amp. 60 Hz NEMA 5-20P.
 Transmission engages by timing belt.
 Weight: 465 pounds.
 Finish dough capacity: 9 kilo (20 pounds).

SM402NA

40-quart mixers with stainless steel bowl, hook, beater and whip
 Security bowl guard with Hub attachment for meat grinder and vegetable cutter.
 Motor: 1 1/2 HP. 208-240 Volts 14 Amp. 60 Hz NEMA 6-20P.
 Transmission engages by timing belt.
 Weight: 525 pounds.
 Finish dough capacity: 13.6 kilo (30 pounds).

NOTE : The finish dough capacity is calculated at 50% A.R. water temperature of 70°F.

Speed # 1 used for heavy mixture such as pizza dough and bread dough.
 Speed # 2 used for light dough which must rise quickly or for whipping.
 Speed # 3 used for light work like whipping cream, beating eggs and mixing thin batters.
 Beater is commonly used for thin batters, cakes, and mashing patties.
 Whip is best for whipping cream and beating eggs.
 Dough arm is for pizza and bread dough.

INSTALLATION OF VEGETABLE OR MEAT CUTTER ATTACHMENT

Insert the attachment with a slight twist to the left so that the stop stud of the attachment is tight against the side of the hole in the mixer. The attachment speed is selected by the speed selector handle. Use the first speed for meat and cheese. Speed #2 and #3 for cutting vegetables.

IMPORTANT

WASH ALL COMPONENTS.
APPLY A THIN LAYER OF FOOD GRADED GREASE TO POINTED AERAS.

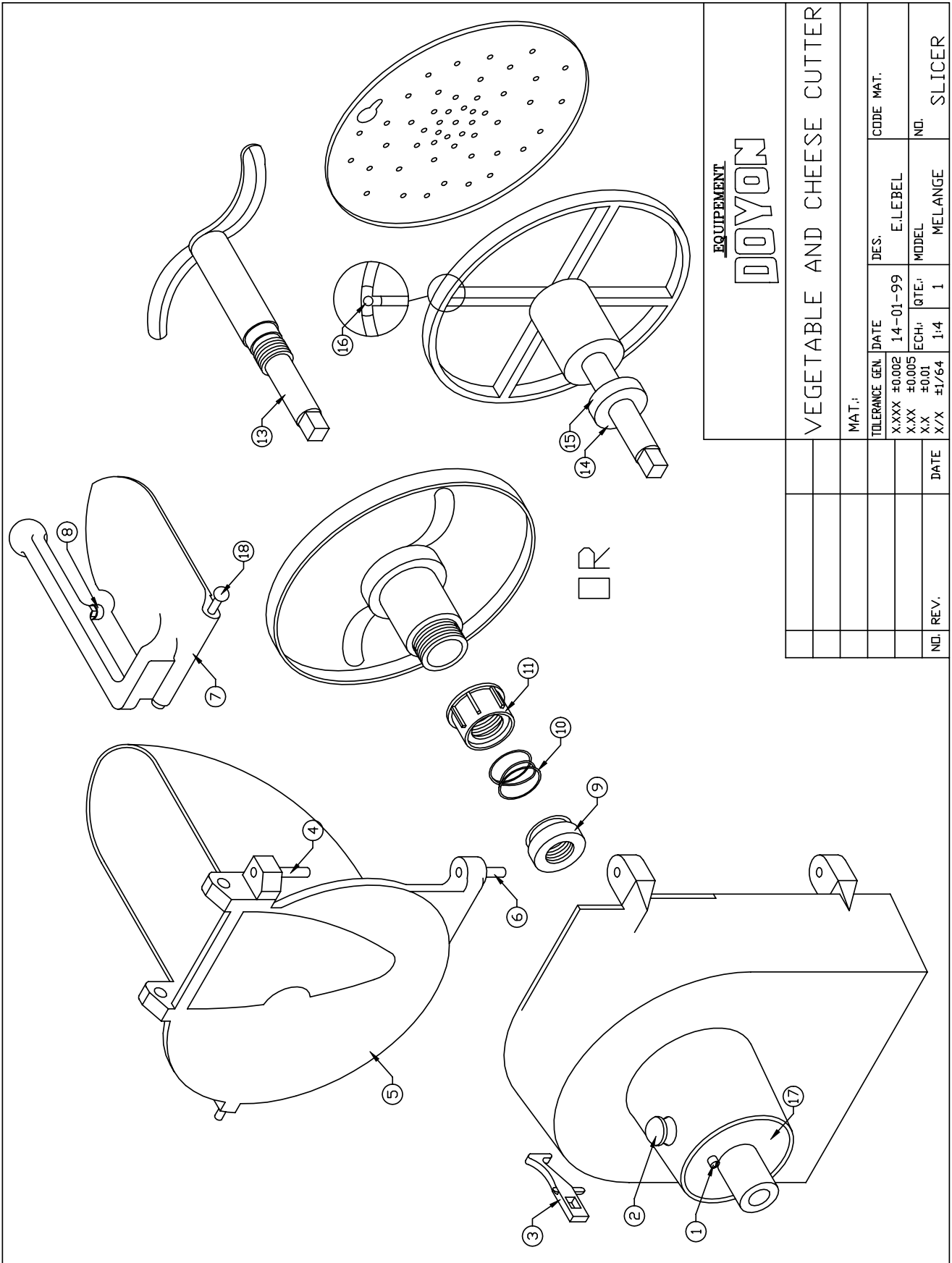
EQUIPEMENT

DOYON

VEGETABLE AND CHEESE CUTTER

TOLERANCE GEN.		DATE	DES.	CODE MAT.
X.XXX	±0.002	14-01-99	E.LEBEL	
X.XX	±0.005	ECH.:	MODEL	NO.
X.X	±0.01	1:4	1	MELANGE
XX	±1/64			SLICER

NO.	REV.	DATE



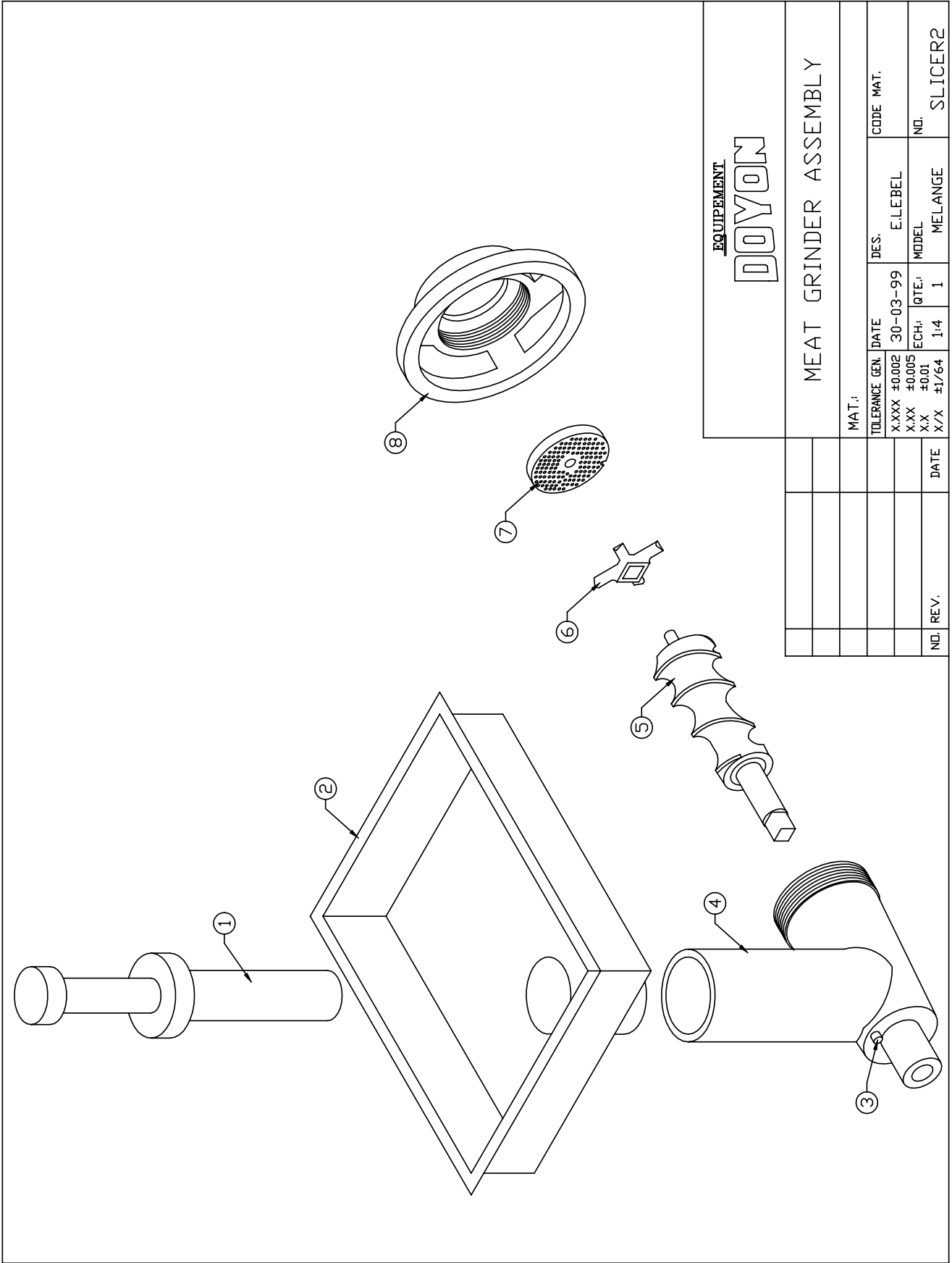
EQUIPEMENT		DOYON	
VEGETABLE AND CHEESE CUTTER			
MAT.:	GEN. DATE	DES.	CODE MAT.
	14-01-99	E.L.EBEL	
TOLERANCE	±0.002	ECH.:	MODEL
X.XXX	±0.005	1:4	1
X.XX	±0.01	MELANGE	NO.
X/X	±1/64		SLICER

NO. REV.	DATE

Item	Part Number	Description	Quantity
1	CL1010	Lock screw	1
2	CL1007	Knife disc lock-on	1
3	CL1005	Door latch	1
4	CL1012	Upper hinge pin	1
5	CL1002	Door	1
6	CL1013	Lower hinge pin	1
7	CL1003	Pusher door and handle	1
8	CL1018	Adjustment screw for door	1
9	CL1024	Lock nut	1
10	CL1023	Tension spring	1
11	CL1022	Knife adjustingnut for disc	1
13	CL1571	Holder for CL6101K	1
14	CL1026	Coller for disc holder	1
15	CL1026A	Set screw for CL1026	1
16	CL1030	Studs for disc holder	8
17	CL1008	Nose for housing hub	1
18	CL1036	ROUND PIN	1

Model : VEGETABLE SLICER

View : EXPLODE



EQUIPEMENT
DOYON

MEAT GRINDER ASSEMBLY

MAT.:		TOLERANCE	GEN.	DATE	DES.	CODE	MAT.
X.XXX	±0.002			30-03-99	E.L.E.BEL		
X.XX	±0.005				MODEL		
X.X	±0.01						
X/X	±1/64			1:4	1	MELANGE	SLICER2
NO.	REV.			DATE			

**FOR MORE INFORMATION,
PLEASE CONTACT OUR OFFICE :**

DOYON EQUIPMENT INC.
1255, rue Principale
Linière, QC, Canada G0M 1J0

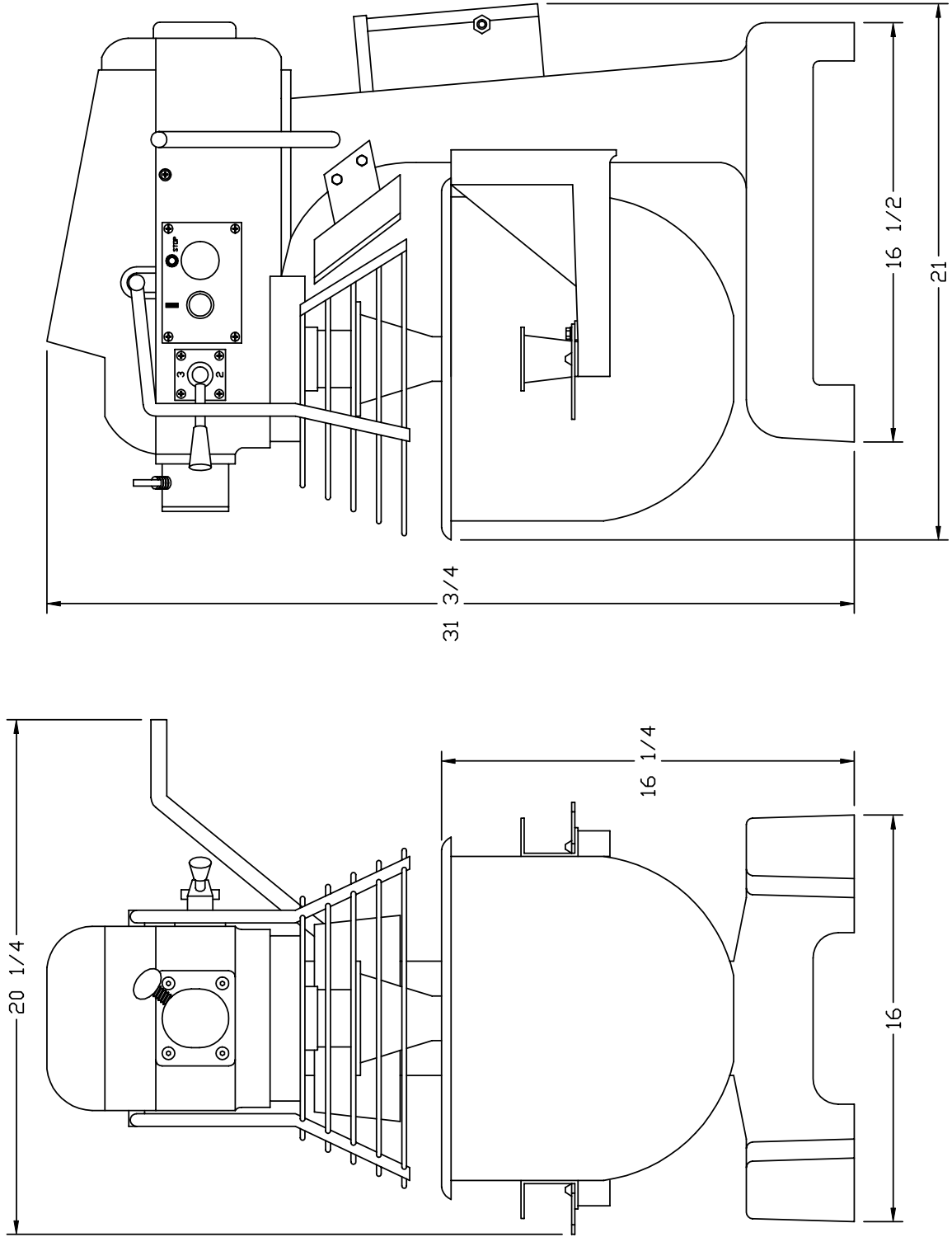
Tel. : (418) 685-3431
Canada : 1-800-463-1636
U.S. : 1-800-463-4273
FAX : (418) 685-3948

Internet: <http://www.doyon.qc.ca>
E-mail : doyon@doyon.qc.ca

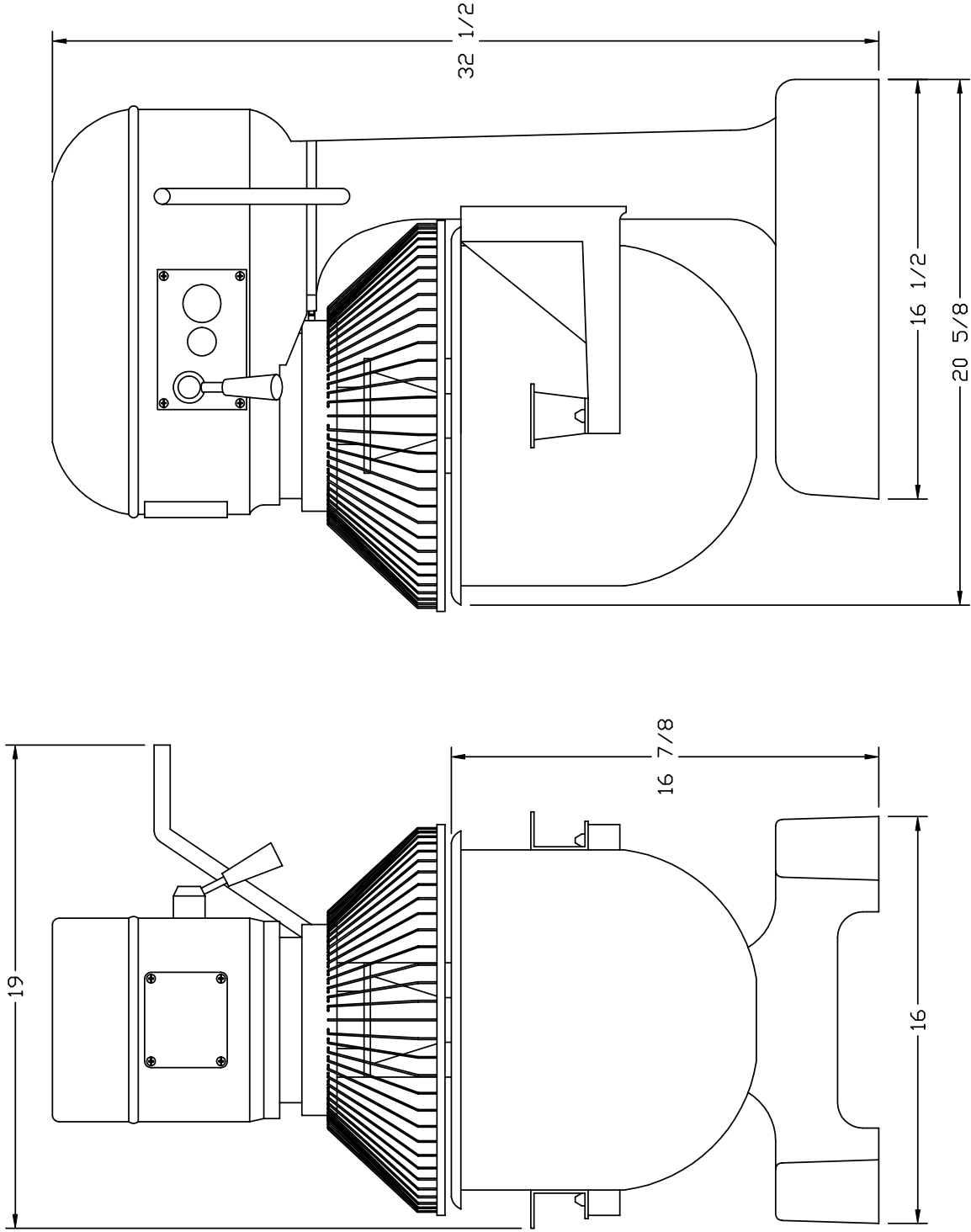
SECTION
B

DIMENSIONS

B1

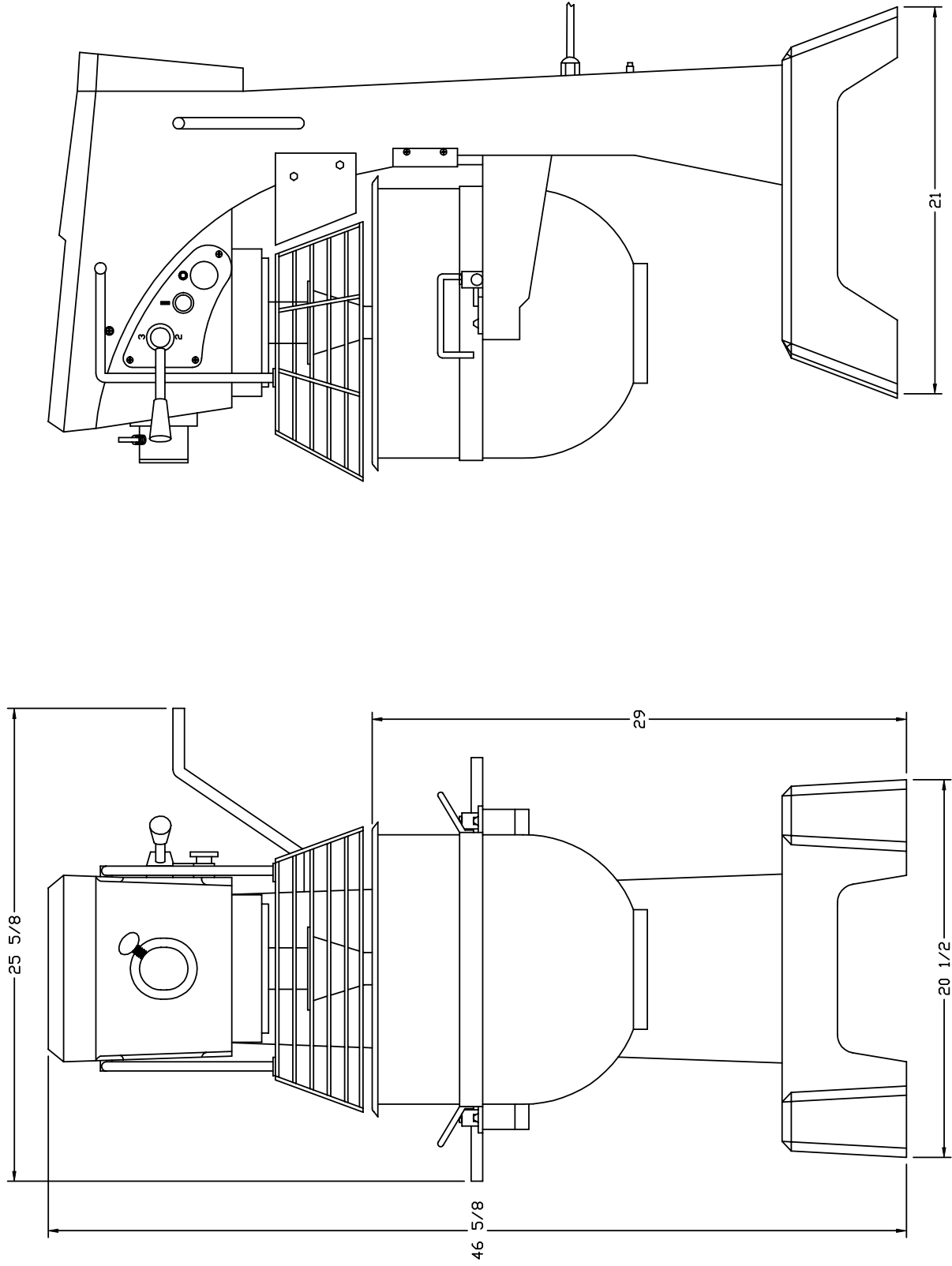


B2



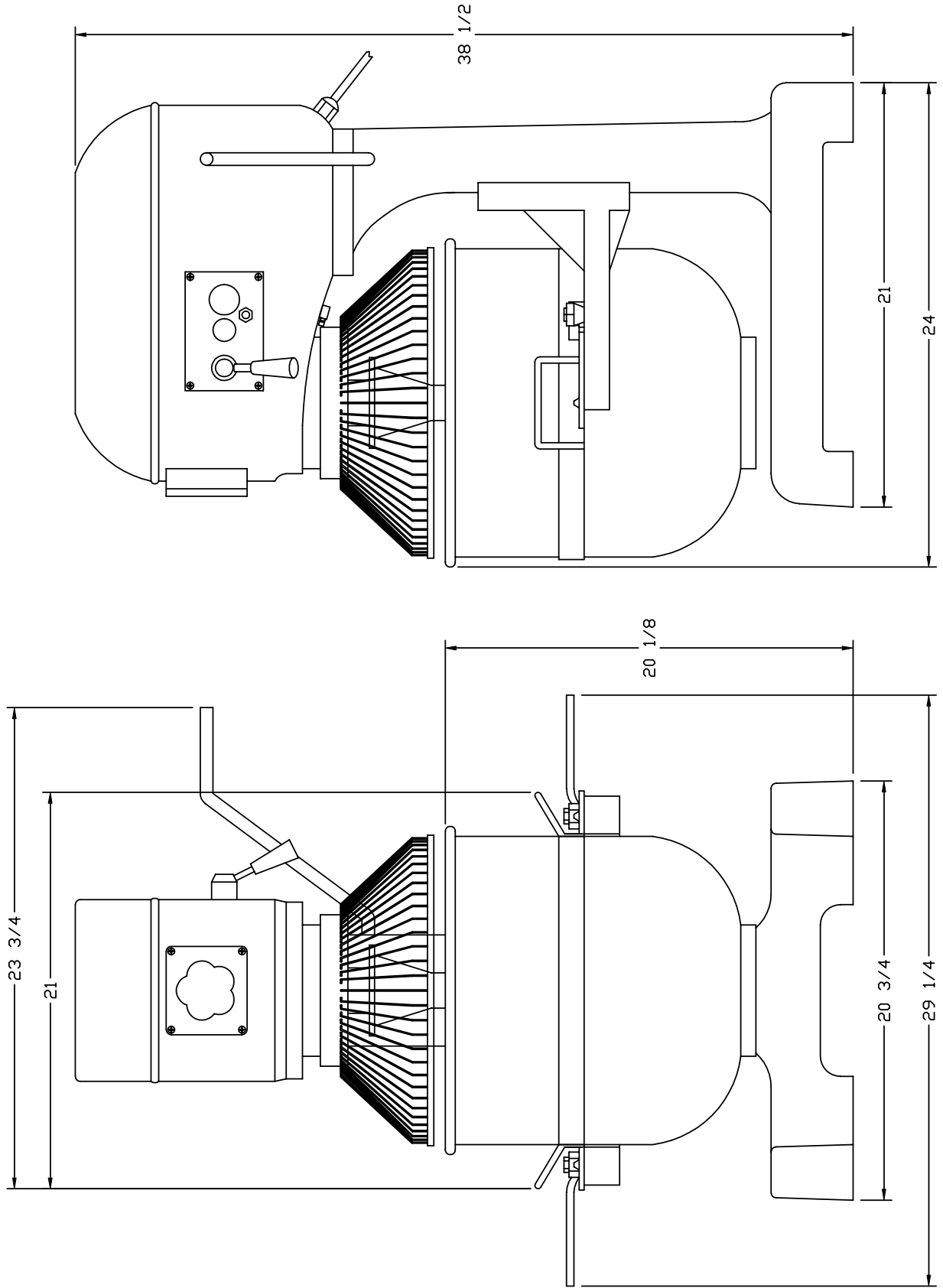
SM201

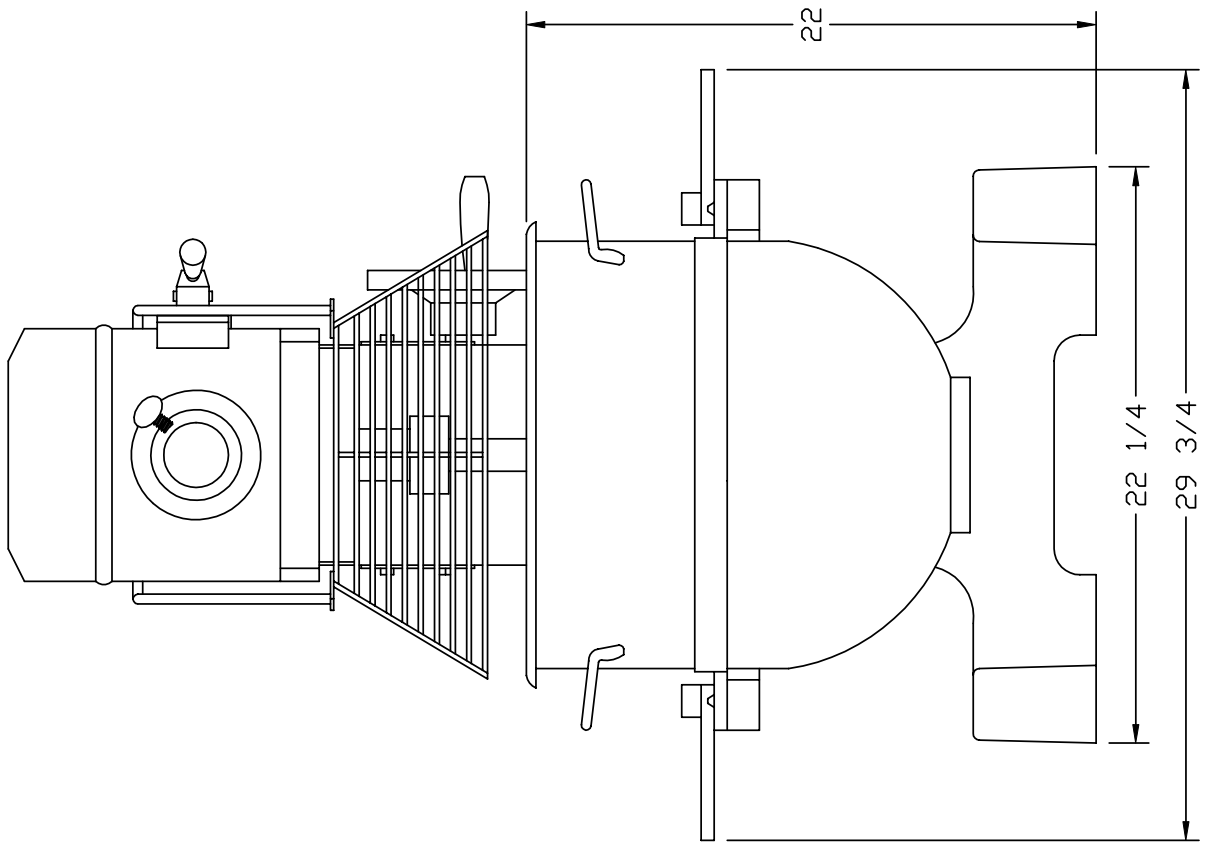
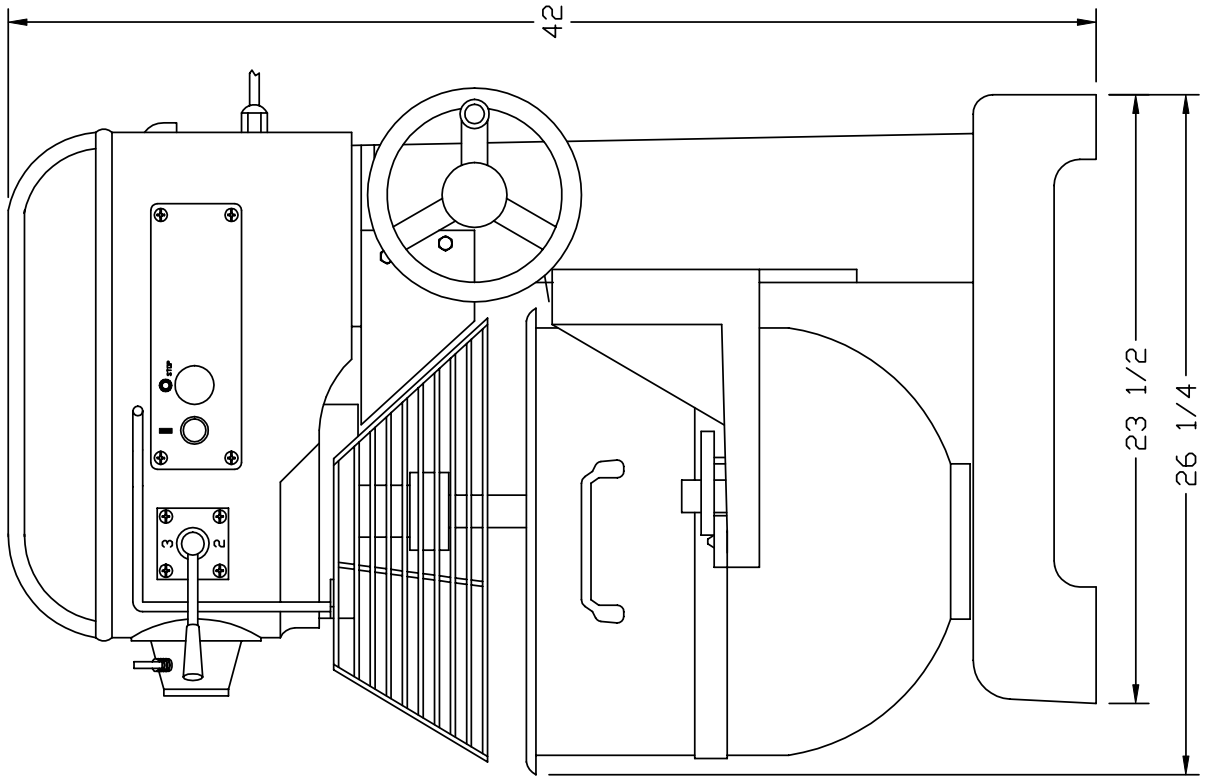
SM201



SM300

B4



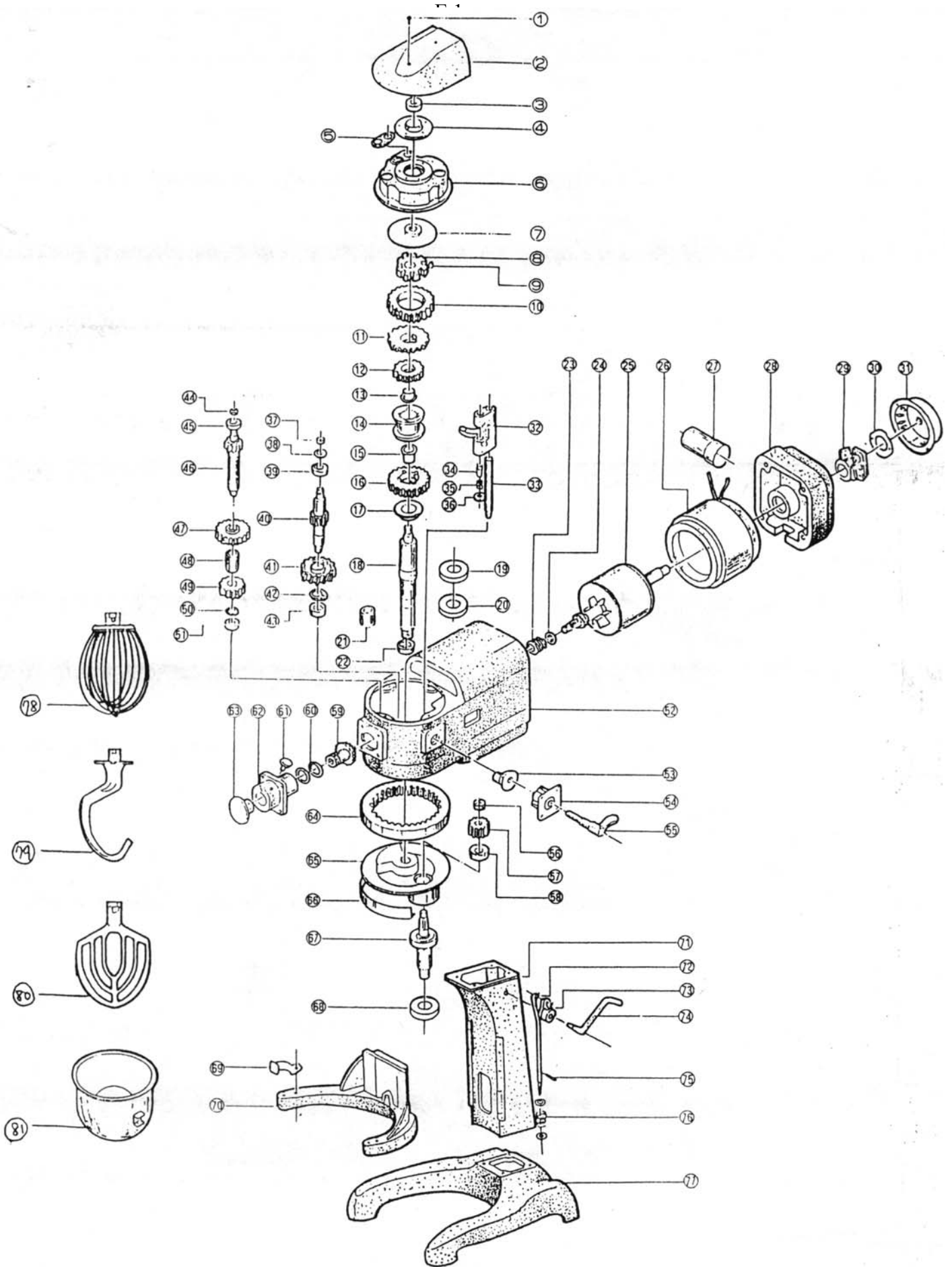


SM402NA

SM402NA

SECTION
E

COMPONENT PARTS



E 2

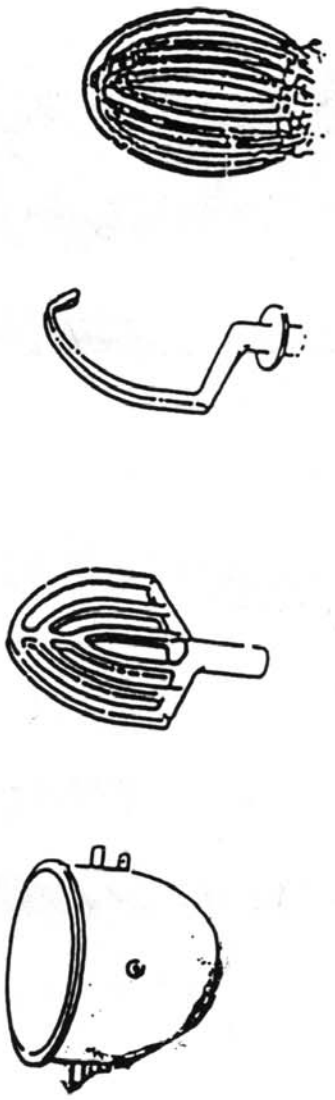
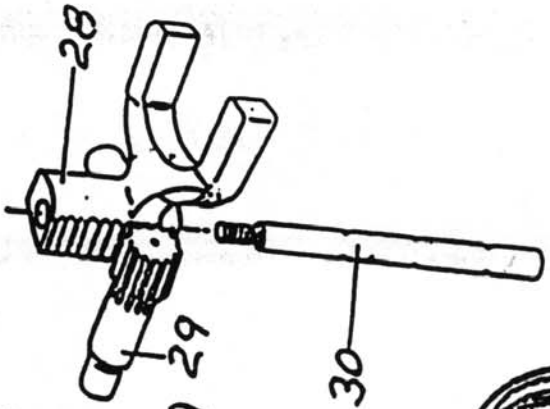
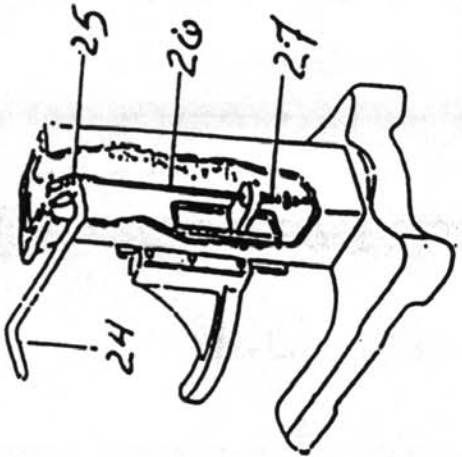
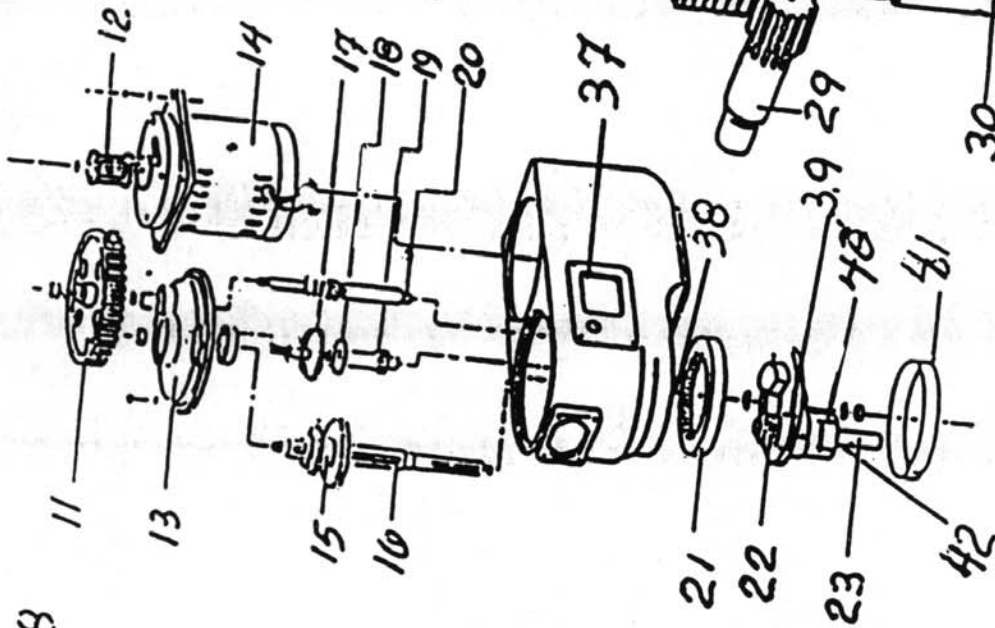
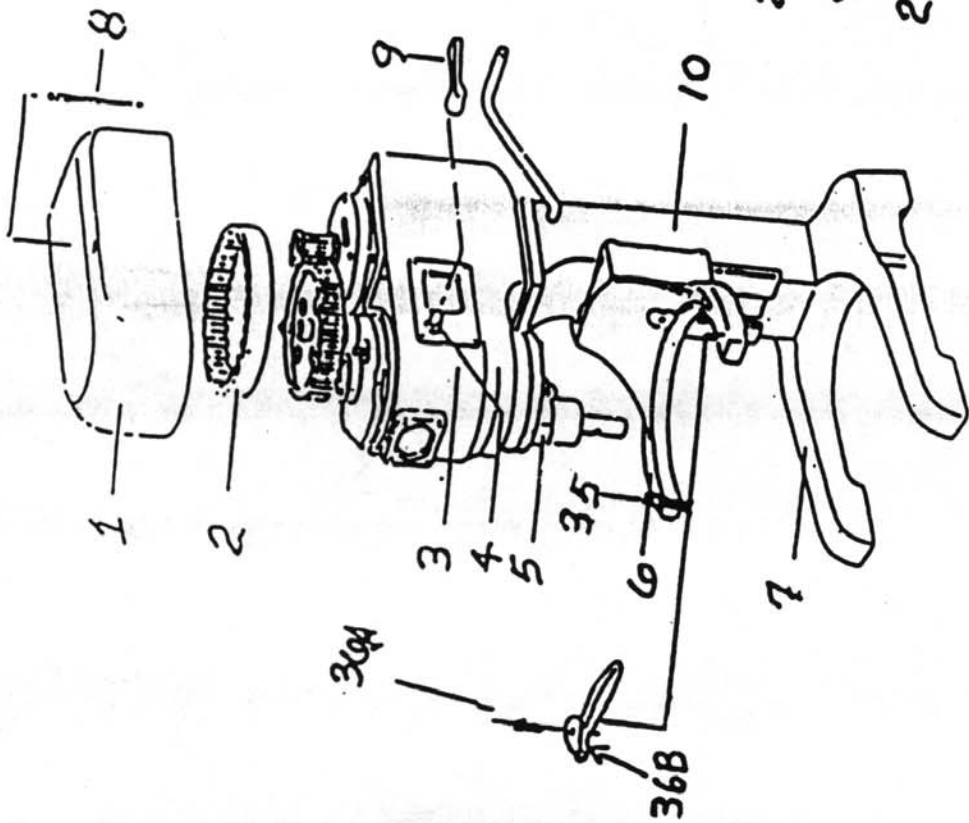
Item	Part Number	Description	Quantity
1	200001	BOLT	1
2	200002	COVER	1
3	200003	NUT	1
4	200004	BEARING COVER	1
5	200005	RETAINING TWIN BEARING	1
6	200006	TRANSMISSION COVER	1
7	200007	SPACER	1
8	200008	CLUTCH ASSEMBLY	1
11	200011	46 TEETH BEVEL GEAR	1
12	200012	29 TEETH GEAR	1
13	200013	BRASS OR METAL BUSHING	1
14	200014	2 TO 3 SPEED BUSHING	1
15	200015	METAL BUSHING	1
16	200016	38 TEETH GEAR	1
17	200017	SPACER	1
18	200018	MAIN SHAFT	1
19	200019	BEARING (#6205) QURB30	1
20	200020	SEAL 35-52-10 (#13989)	1
21	200021	METAL BUSHING	1
22	200022	NUT	1
23	200023	5 TEETH WORM GEAR FOR MOTOR	1
24	200024	SPACER	1
25	200025	MOTOR SHAFT	1
26	200026	MOTOR COIL	1
27	200027	START CAPACITOR	1
28	200028	MOTOR COVER	1
29	200029	MECHANICAL CENTRIFUGAL SWITCH	1
30	200030	SPACER METAL STARTER	1
31	200031	COVER	1
32	200032	FORK	1
33	200033	SHAFT	1
34	200034	PLUNGER	1
35	200035	SPRING	1
36	200036	BOLT	1
37	200037	NUT	1
38	200038	WASHER	1
39	200039	BEARING (#6201) QURB07	1
40	200040	15 TEETH GEAR SHAFT	1
41	200041	29 TEETH BRASS WORM GEAR	1
42	200042	SNAP RING	1
43	200043	BEARING (#6201) QURB07	1
44	200044	NUT	1
45	200045	BEARING (#6201) QURB07	1
46	200046	15 TEETH GEAR SHAFT	1
47	200047	32 TEETH GEAR	1
48	200048	SPACER	1
49	200049	23 TEETH GEAR	1
50	200050	SNAP RING	1
51	200051	BEARING (#6201) QURB07	1
52	200052	TRANSMISSION CASTING	1
53	200053	SHIFTER ASSEMBLY	1
56	200056	NUT	1

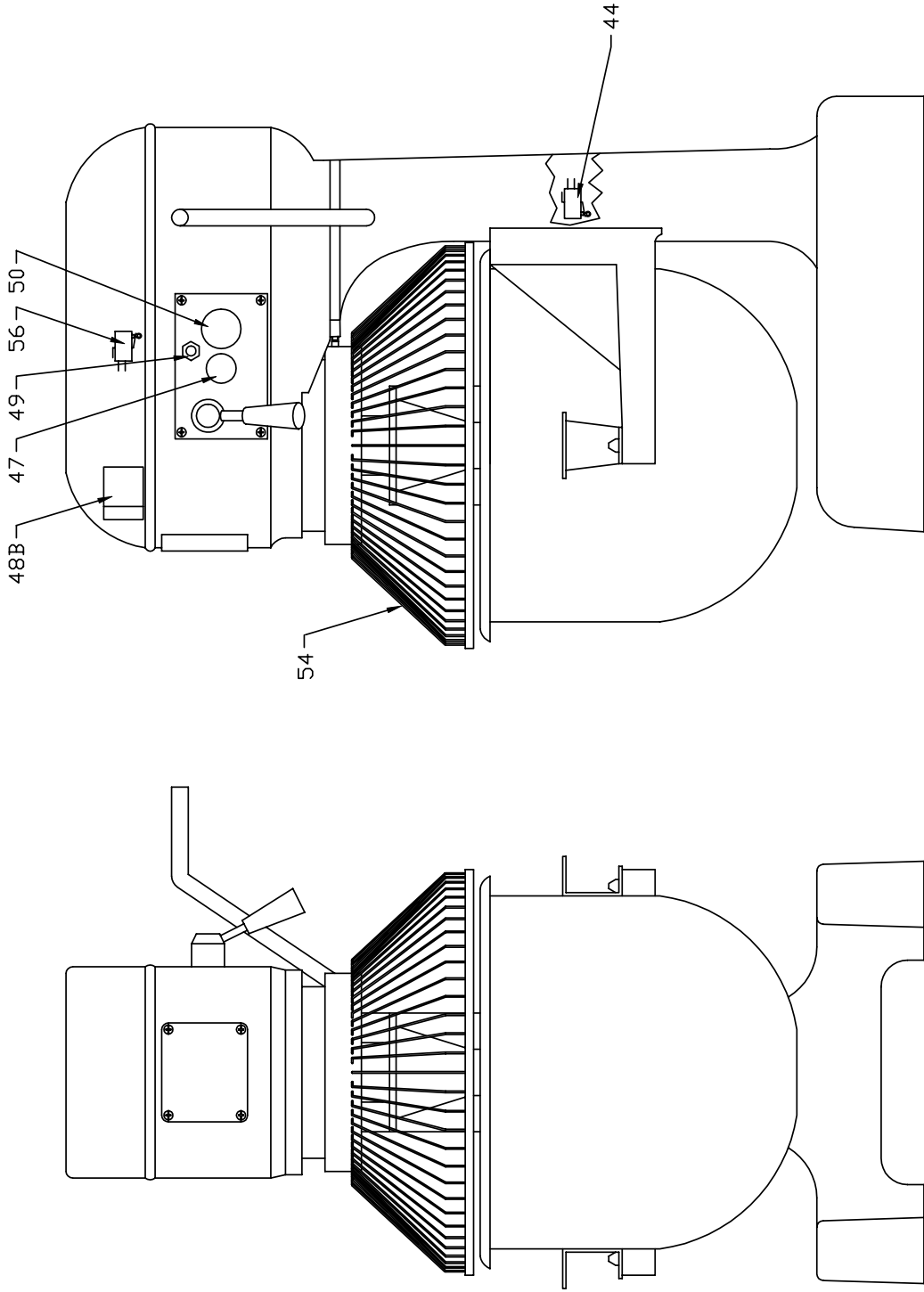
E 3

57	200057	19 TEETH GEAR	1
58	200058	BEARING (#6203) QURB09	1
59	200059	35 TEETH BEVEL GEAR	1
60	200060	SPACER	1
61	200061	THUMB SCREW	1
62	200062	HUB ATTACHMENT	1
63	200063	COVER	1
64	200064	63 TEETH RING GEAR	1
65	200065	PLANETARY CASTING	1
66	200066	CUP DRIP	1
67	200067	BEARING (#6204) QURB10	1
68	200068	SEAL 27-45-10 (#9748)	1
69	200069	BOWL CLIPS	1
70	200070	BOWL SUPPORT	1
71	200071	PEDESTAL	1
72	200072	ROD BOWL LIFT	1
73	200073	ARM BOWL LIFT	1
74	200074	BOWL LIFT HANDLE	1
75	200075	CUTTER PIN	1
76	200076	NUT	1
77	200077	BASE	1
82	200082	PLANETARY SHAFT	1
83	200083	BARREL SWITCH	1
84	200084	ROCKER SWITCH	1
85	200085	START SWITCH (ELI555 & ELP994)	1
86	200086	STOP SWITCH (ELI555 & ELP991)	1
87	200087	BOWL LIMIT SWITCH	1
88	200088	BOWL SUPPORT GUARD SWITCH	1
89	200089	BREAKER (ELB099)	1

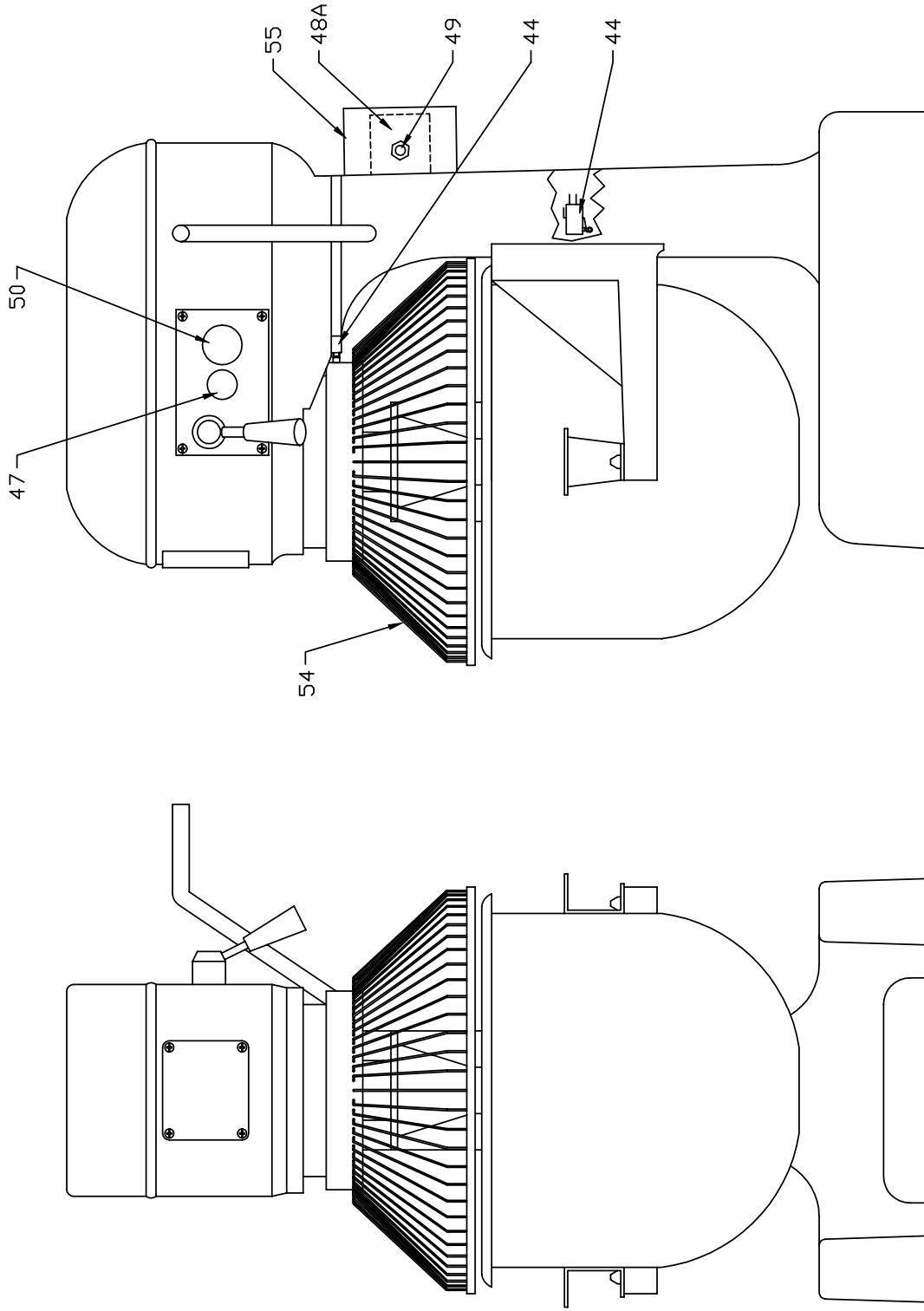
Model : Mélangeur 20 pintes avec attachement

View : Explode





NEW CONTACTOR DESIGN
NOUVEAU MODELE DE CONTACTEUR



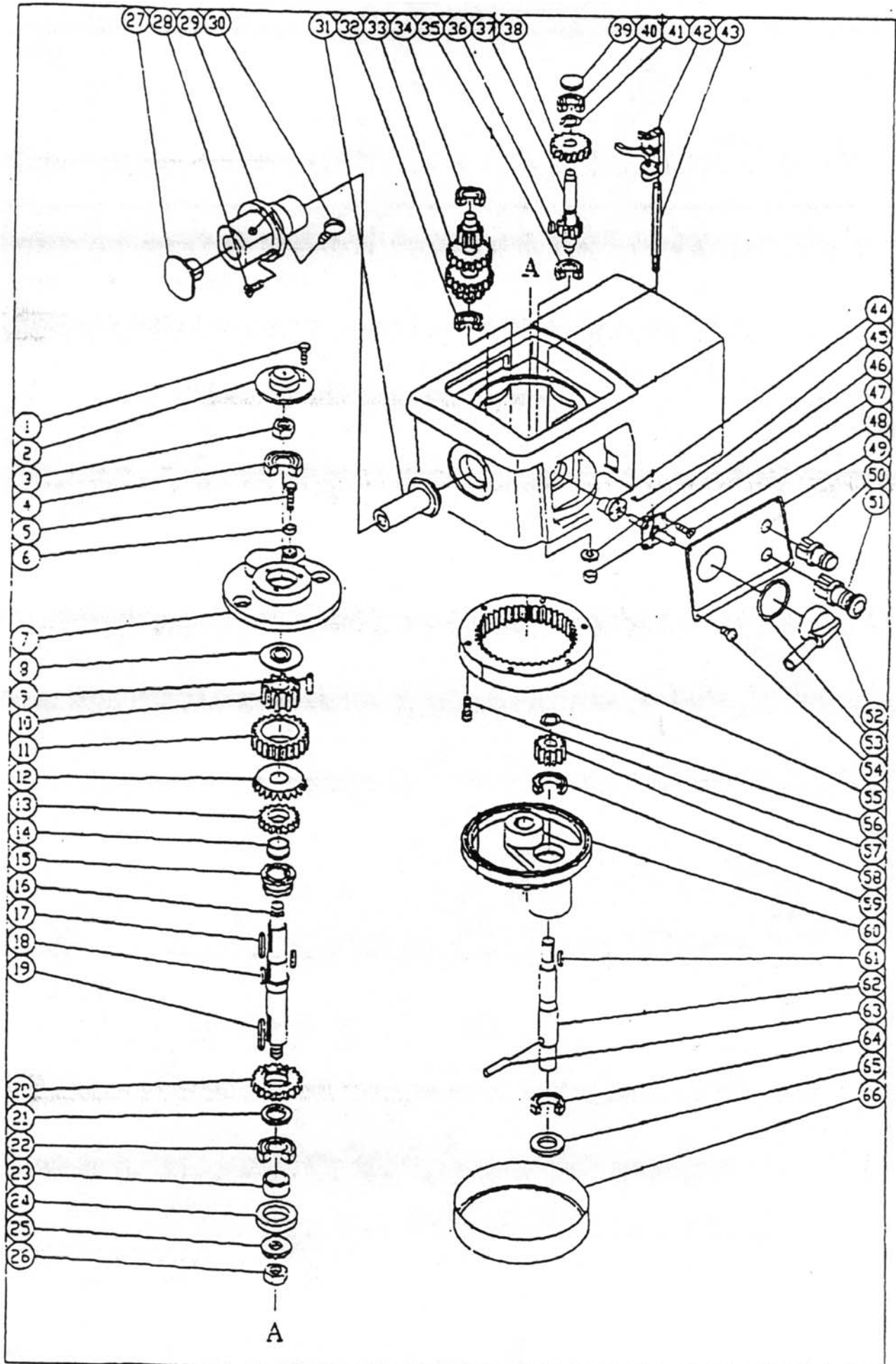
OLD CONTACTOR DESIGN
ANCIEN MODELE DE CONTACTEUR

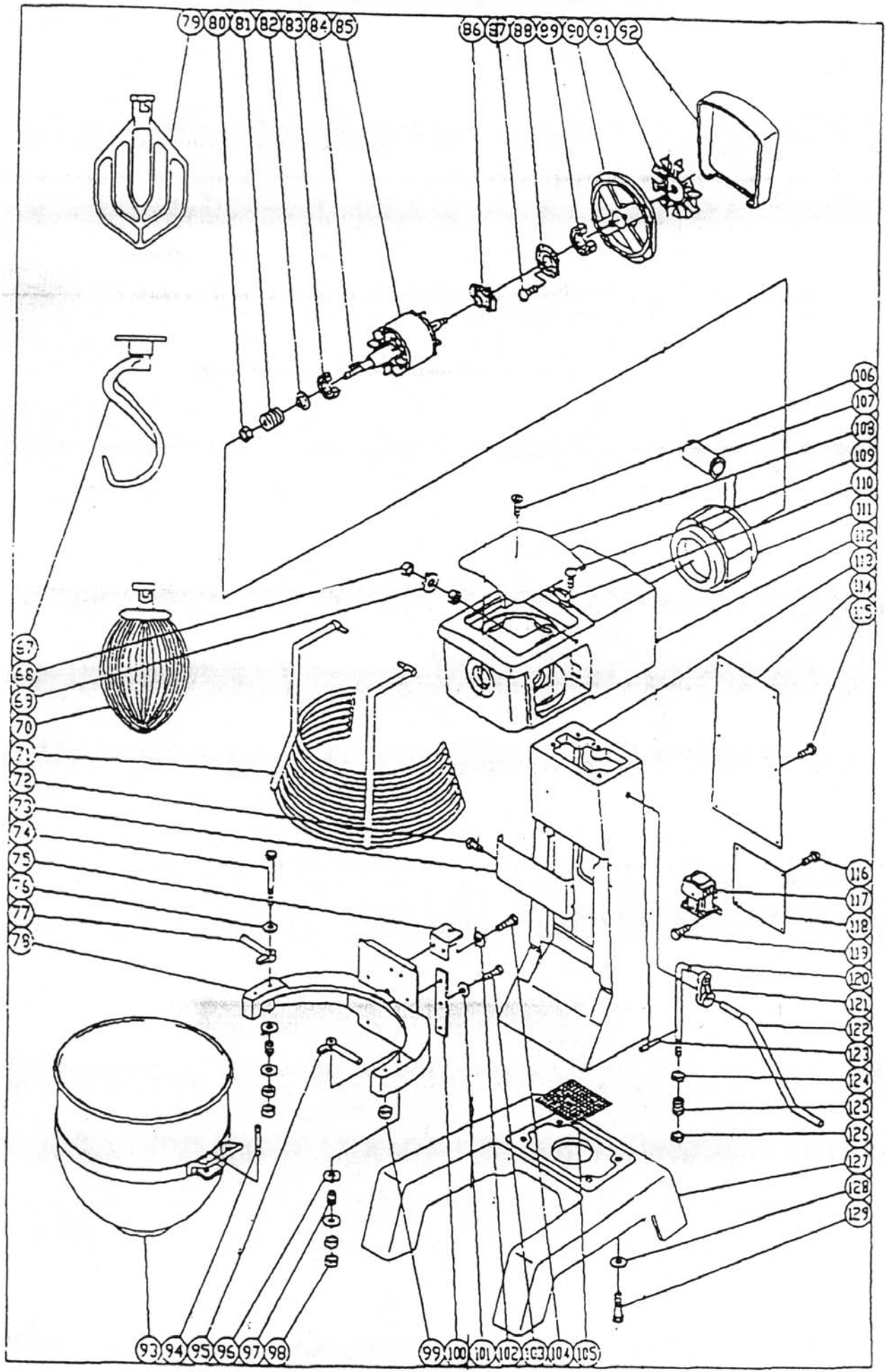
Item	Part Number	Description	Quantity
1	201001	COVER	1
2	201002	BELT 255L	1
3	201003	CASTING TRANSMISSION	1
4	201004	SPEED CHANGING SHAFT	1
5	201005	SPINDLE CASE	1
6	201006	BOWL SUPPORT	1
7	201007	BASE	1
8	201008	HEX-SCREW	1
9	201009	SPEED INDICATOR	1
10	201010	PEDESTAL	1
11	201011	BELT 60 TEETH GEAR	1
12	201012	MOTOR BELT GEAR	1
13	201013	TRANSMISSION COVER	1
14	201014	MOTOR	1
15	201015	25-32-40 TEETH TRIPLE GEAR	1
16	201016	MAIN SHAFT	1
17	201017	29 TEETH GEAR	1
18	201018	21 TEETH GEAR	1
19	201019	12 TEETH GEAR SHAFT	1
20	201020	12 TEETH GEAR SHAFT	1
21	201021	59 TEETH RING GEAR	1
22	201022	18 TEETH GEAR	1
23	201023	PLANETARY SHAFT	1
24	201024	BOWL LIFT HANDLE	1
25	201025	ARM BOWL LIFT	1
26	201026	ROD	1
27	201027	BOLT	1
28	201028	FORK	1
29	201029	SPEED CHANGING SHAFT	1
30	201030	SHAFT FOR GUIDE FORK	1
35	201035	GUIDE ROD FOR BOWL	1
36A	201036A	CLIPS SCREW	1
36B	201036B	RIGHT SIDE CLIPS	1
36C	201036C	LEFT SIDE CLIPS	1
37	201037	TOGGLE SWITCH	1
38	201038	SEAL 25-47-8 (#9748)	1
39	201039	BEARING (#6203) QURB09	1
40	201040	BEARING (#6005) QUR010	1
42	201042	SEAL 28-47-7 (#10959)	1
43	201043	BEARING (QURB30)	1
44	201044	BOWL AND GARD SWITCH	1
45	201045	BEARING (QURB09)	2
47	201047	START SWITCH	1
48A	201048A	CONTACTOR 110 VOLTS (ELC912) OR 220 VOLTS (ELC913)	1
48B	201048B	CONTACTOR NEW MODEL	1
49	201049	BRAKER 13 AMPS.	1
50	201050	STOP SWITCH	1
54	201045	BEARING (QURB09)	1
55	201055	ELECTRIC BOX	1
56	201056	BOWL GUARD MICRO SWITCH (NEW MODEL)	1

E 8

Model : Mélangeur 20 pintes sans attachement

View : Explode





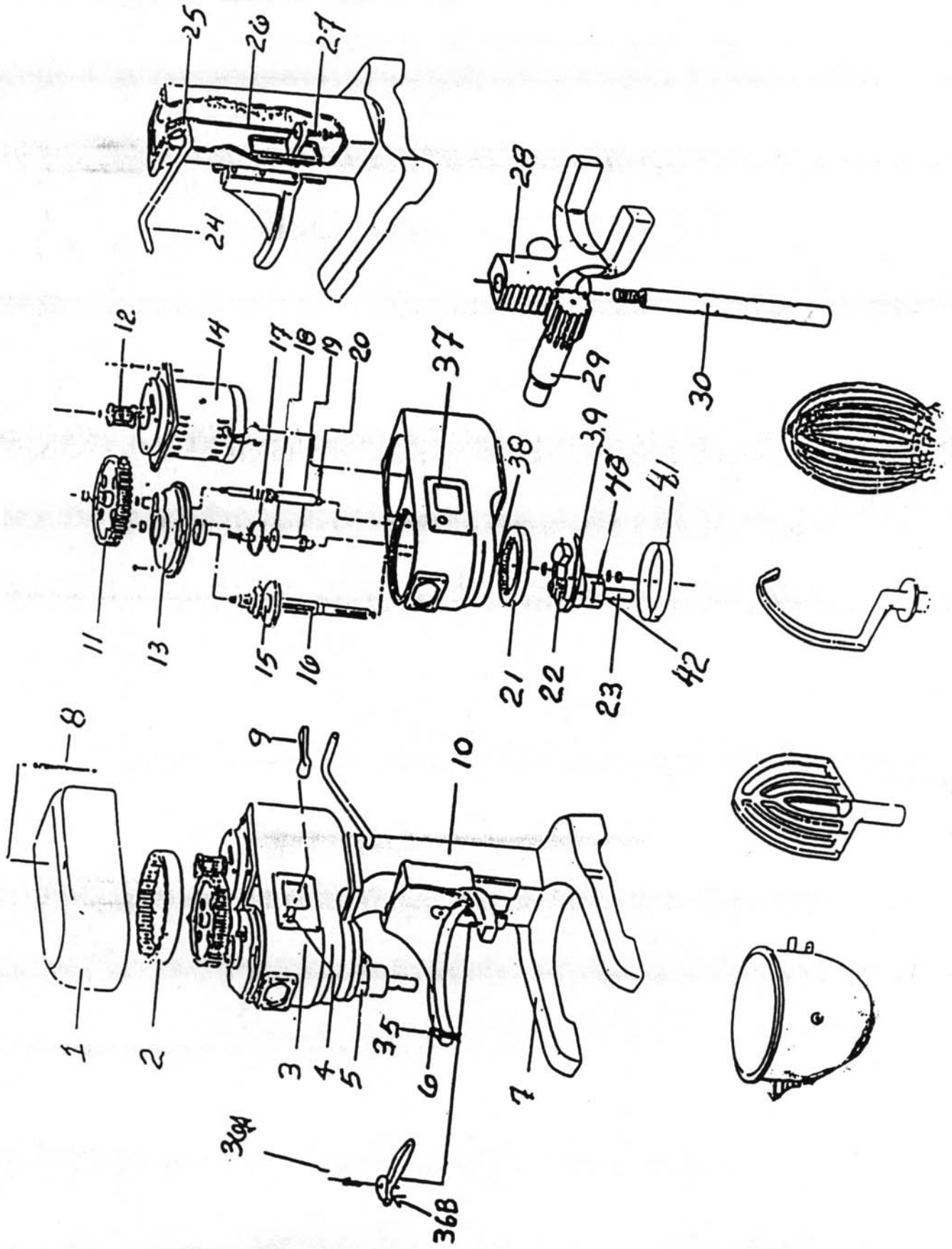
Item	Part Number	Description	Quantity
1	300002	BEARING COVER	1
3	300003	3/4-16 NUT	1
4	300004	BEARING (#6204) QURB10	1
7	300007	TRANSMISSION COVER	1
8	300008	CLUTCH SPACER	1
9	300009	37 TEETH CLUTCH	1
12	300012	46 TEETH BEVEL GEAR	1
13	300013	24 TEETH GEAR	1
14	300014	BRASS BUSHING	1
15	300015	2ND AND 3RD SPEED CLUTCH	1
16	300016	MAIN SHAFT	1
17	300017	KEY 1/4 x 1/4	1
18	300018	KEY 3/16 x 3/16	1
19	300019	KEY 1/4 x 1/4	1
20	300020	31 TEETH GEAR	1
21	300021	SPACER	1
22	300022	BEARING (#6206) QURB011	1
23	300023	BUSHING	1
24	300024	SEAL 40-62-8 (#15845)	1
25	300025	3/4 WASHER	1
26	300026	NUT	1
27	300027	HUB ATTACHMENT	1
28	300028	1/4 x 1 SCREW	1
29	300029	HUB ATTACHMENT	1
30	300030	THUMB SCREW	1
31	300031	35 TEETH BEVEL GEAR	1
32	300032	BEARING (#6203) QURB09	1
33	300033	12-25-26-18 TEETH QUADRUPLE GEAR SHAFT	1
34	300034	BEARING (#6203) QURB09	1
35	300035	BEARING (#6202) QURB08	1
36	300036	KEY 1/4 x 1/4	1
37	300037	12 TEETH GEAR SHAFT	1
38	300038	17 TEETH BRASS WORM GEAR	1
39	300039	COVER	1
40	300040	BEARING (#6202) QURB08	1
41	300041	SNAP RING	1
42	300042	FORK	1
43	300043	ROD SHIFTER GUIDE	1
44	300044	SEE 300046	1
46	300046	SPEED INDICATOR ASSEMBLY WITH #300044	1
50	300050A	START SWITCH (ELI555 & ELP994)	1
51	300051	STOP SWITCH (ELI575 & ELP991)	1
52	300052	SPEED INDICATOR HANDLE	1
53	300053	"O" RING	1
55	300055	59 TEETH RING GEAR	1
56	300056	SNAP RING	1
58	300058	18 TEETH GEAR	1
59	300059	BEARING (#6204) QURB10	1
61	300061	KEY 1/4 X 1/4	1
62	300062	SPINDLE SHAFT	1
63	300063	PIN	1
64	300064	BEARING (#6205) QURB30	1

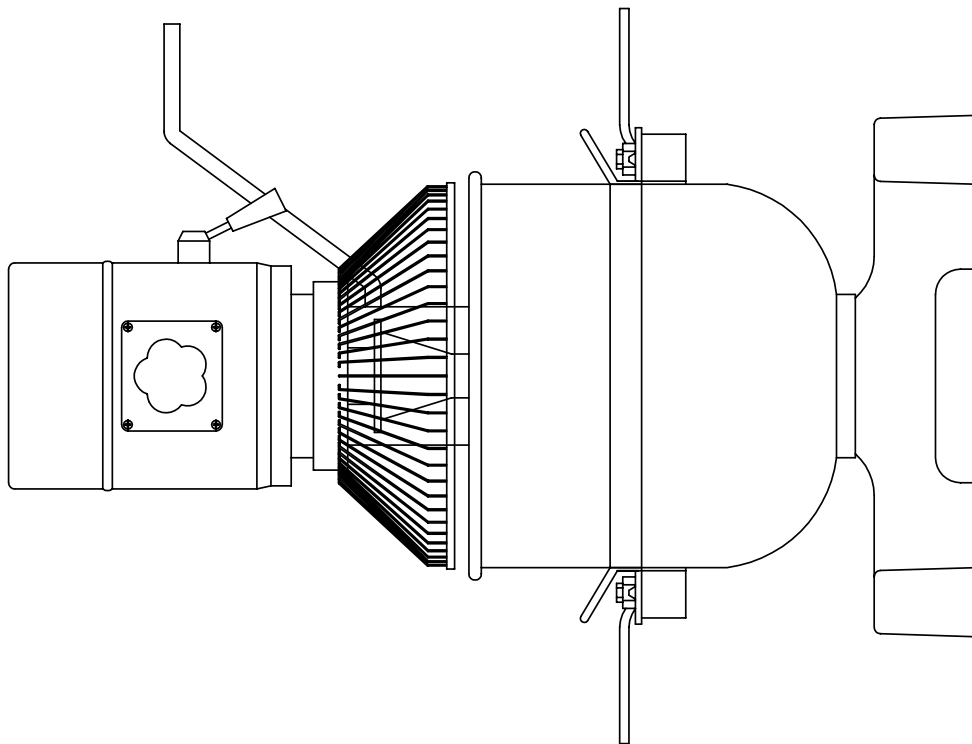
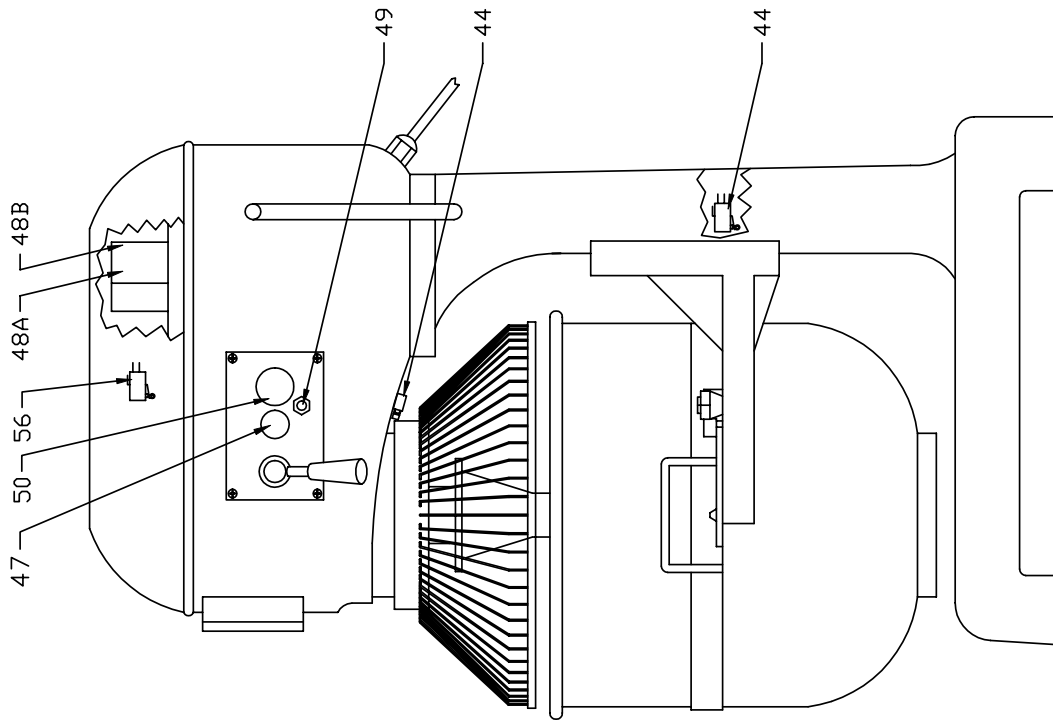
E 14

65	300065	SEAL 30-52-8 (#11640)	1
66	300066	CUP DRIP	1
71	300071	BOWL GUARD	1
77	300077	LEFT SIDE BOWL HANDLE	1
80	300080	NUT	1
81	300081	MOTOR WORM GEAR	1
83	300083	BEARING (#6203) QURB09	1
84	300084	KEY	1
85	300085	MOTOR ROTOR	1
86	300086	CENTRIFUGAL SWITCH	1
88	300088	PLATE	1
89	300089	BEARING (#6203) QURB09	1
90	300090	FLANGE	1
92	300092	COVER	1
94	300094	BOWL GUIDE ROD	1
95	300095	RIGHT SIDE BOWL HANDLE	1
97	300097	SPRING	1
107	300107	CAPACITOR	1
108	300108	COVER	1
110	300110	BOWL GUARD SWITCH	1
114	300114	COVER	1
117	300117	CONTACTOR	1
118	300118	COVER	1
120	300120	ROD ASSEMBLY	1
130	300130	BOWL SUPPORT SWITCH	1
131	300131	15 AMPS BREAKER (ELB099)	1

Model : Mélangeur 30 pintes avec attachement

View : Explode





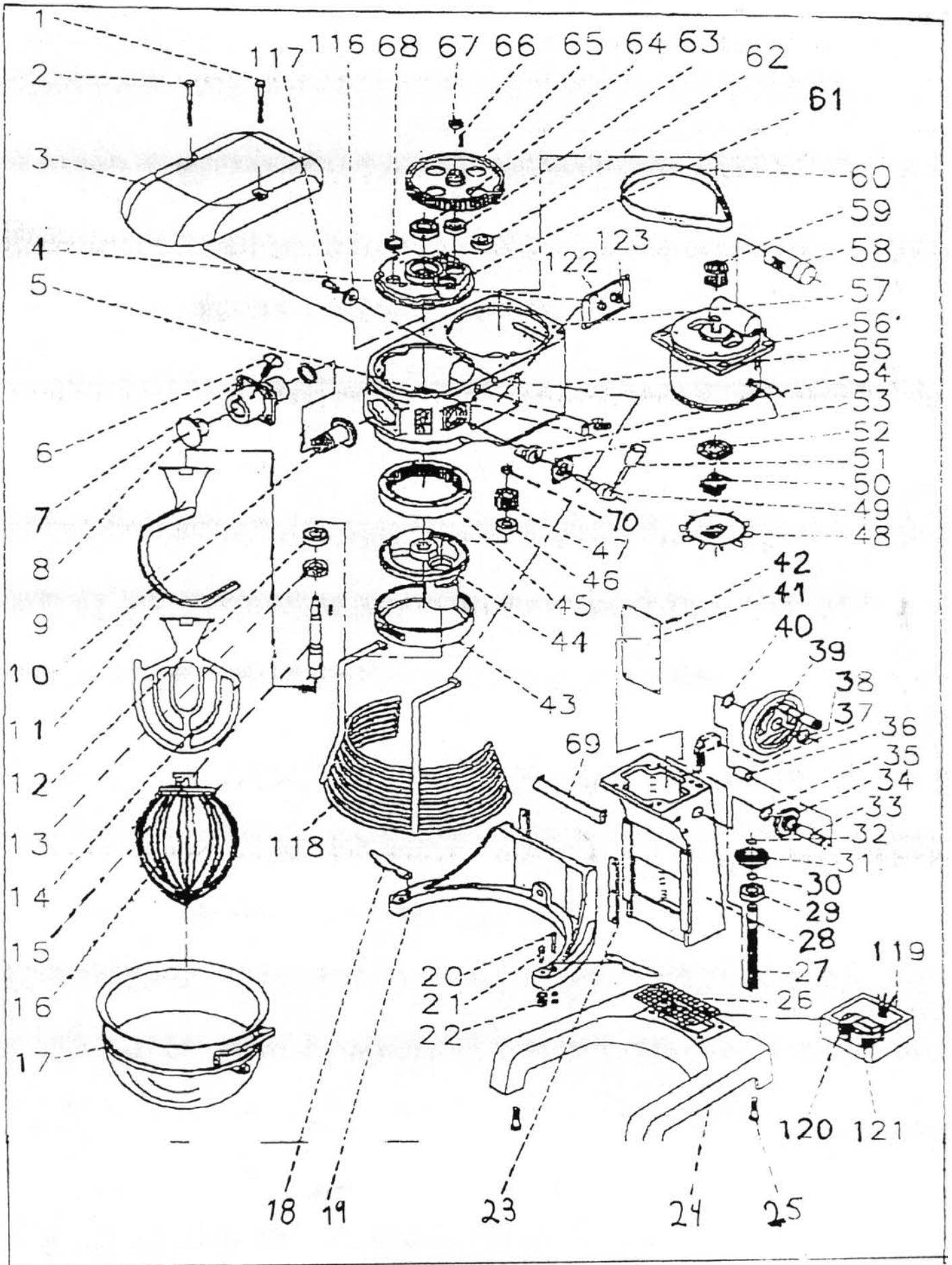
SM401

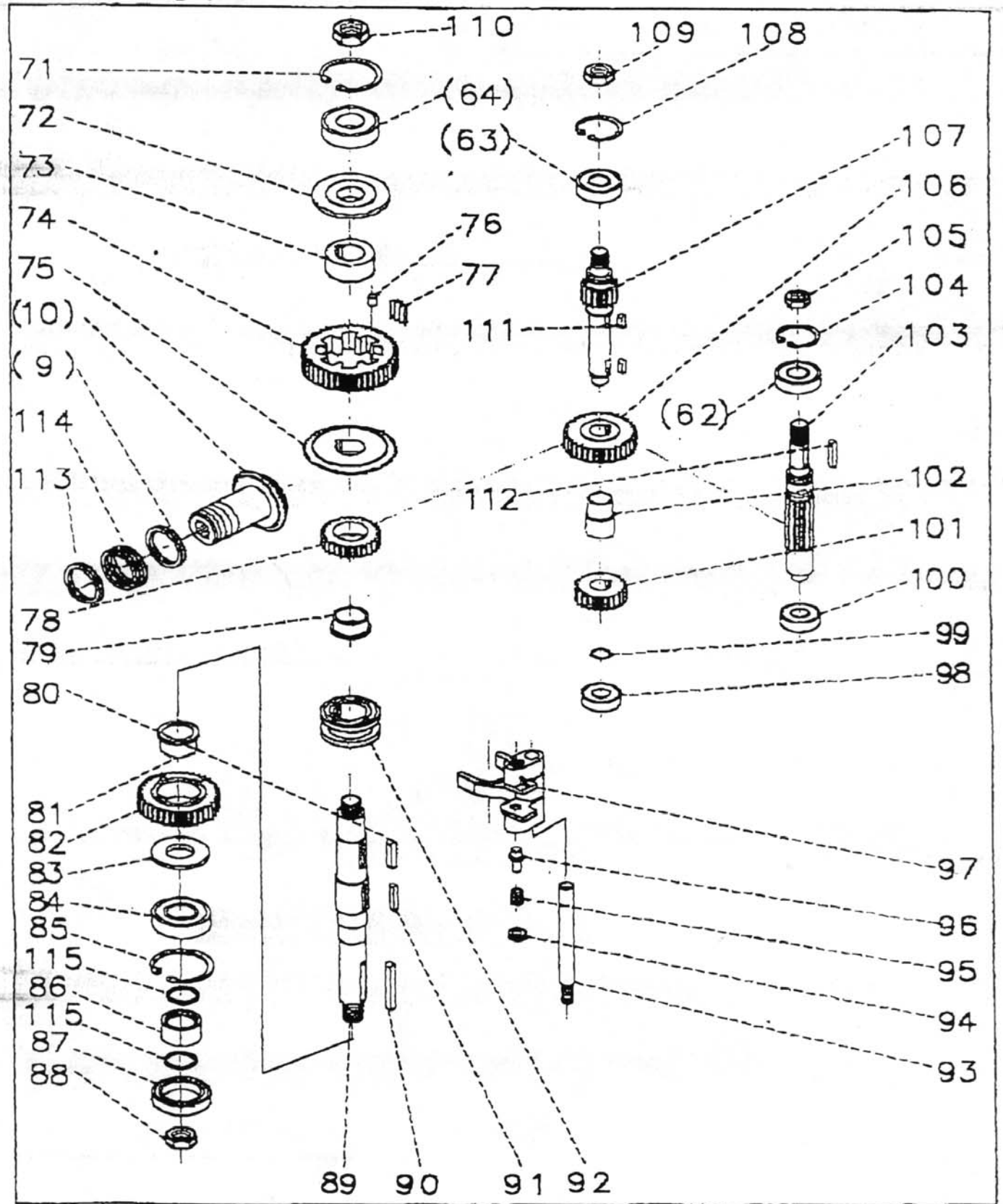
SM401

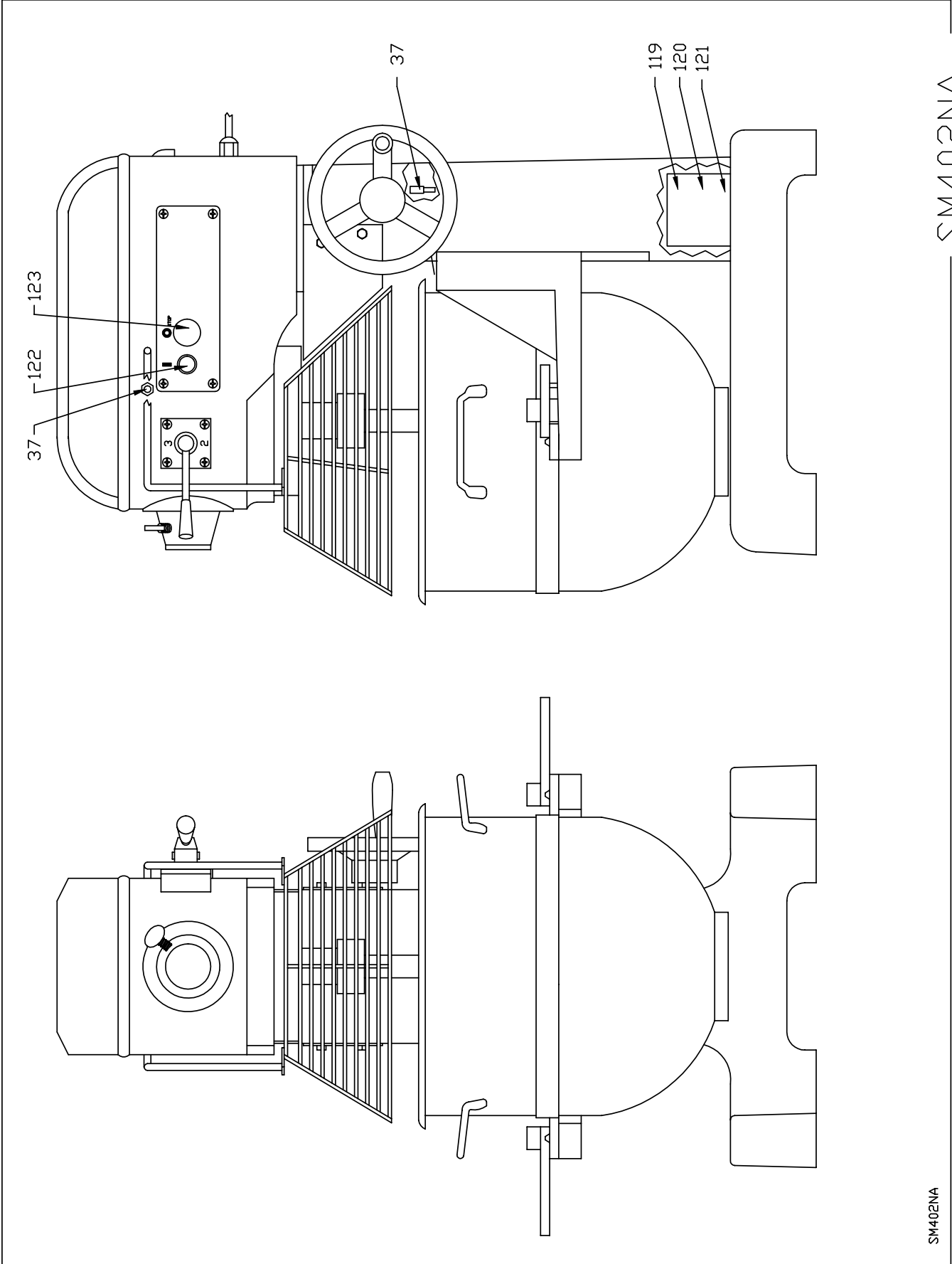
Item	Part Number	Description	Quantity
1	401001	COVER	1
2	401002	BELT 300L	1
3	401003	TRANSMISSION CASE	1
4	401004	SEE 401029	1
5	401005	SPINDLE CASE	1
6	401006	ARCH	1
7	401007	BASE	1
8	401008	BOLT	1
9	401009	SPEED INDICATOR	1
10	401010	PEDESTAL	1
11	401011	70 TEETH GEAR BELT	1
12	401012	13 TEETH MOTOR GEAR BELT	1
13	401013	TRANSMISSION COVER	1
14	401014	MOTOR	1
15	401015	27-37 TEETH DOUBLE GEAR	1
16	401016	CENTRAL SHAFT	1
17	401017	34 TEETH GEAR	1
18	401018	24 TEETH GEAR	1
19	401019	15 TEETH GEAR SHAFT	1
20	401020	13 TEETH GEAR SHAFT	1
21	401021	69 TEETH RING GEAR	1
22	401022	22 TEETH GEAR	1
23	401023	SPINDLE SHAFT	1
24	401024	BOWL LIFT HANDLE	1
25	401025	ARM BOWL LIFT	1
26	401026	PIN	1
27	401027	SPRING	1
28	401028	FORK	1
29	401029	SPEED CHANGING SHAFT 14 TEETH	1
30	401030	GUIDE FORK SHAFT	1
35	401035	GUIDE ROD FOR BOWL	1
36A	401036A	CLIPS SCREW	1
36B	401036B	RIGHT SIDE CLIPS	1
36C	401036C	LEFT SIDE CLIPS	1
37	401037	TOGGLE SWITCH	1
38	401038	SEAL	1
39	401039	BEARING (#6205) QURB30	1
40	401040	BEARING #(6006) QURB012	1
42	401042	SEAL 32-55-18 (#12755)	1
43	401043	BEARING (#6204LLU) QURB10	2
44	401044	BOWL AND GUARD SWITCH	1
45	401045	BEARING (QURB011)	1
46	401046	46 TEETH GEAR	1
47	401047	START SWITCH A (GREEN)	1
48A	401048A	CONTACTOR 110 VOLTS (ELC912) OR 220 VOLTS (ELC913)	2
48B	401048B	CONTACTOR NEW MODEL	1
49	401049	BRAKER 20 AMPS.	1
50	401050	STOP SWITCH	1
56	401056	BOWL GUARD MICRO SWITCH	1

Model : Mélangeur 40pintes sans attachement

View : Explode







Item	Part Number	Description	Quantity
1	402N001	COVER SCREW	1
2	402N002	COVER SCREW	1
3	402N003	TRANSMISSION COVER	1
4	402N004	ON / OFF MAIN SWITCH	1
5	402N005	BOWL GUARD MICRO SWITCH	1
6	402N006	THUM SCREW	1
7	402N007	HUB ATTACHMENT	1
8	402N008	ATTACHMENT CAP	1
9	402N009	THRUST WASHER	1
10	402N010	BEVEL GEAR 35 TEETH	1
11	402N011	KNEADER	1
12	402N012	BEARING (6206Z) QURB011	1
13	402N013	SEAL 62-35-10	1
14	402N014	PADDLE	1
15	402N015	PLANETARY SHAFT	1
16	402N016	WHIP	1
17	402N017	BOWL	1
18	402N018	BOWL LOCK HANDLE	2
19	402N019	BOWL SUPPORT	1
20	402N020	SCREW	1
21	402N021	NUT STOP	1
22	402N022	BOLT	1
23	402N023	HOLDER ARCH	1
24	402N024	BASE	1
25	402N025	SCREW	1
26	402N026	NET	1
27	402N027	TREADED ROD FOR BOWL SUPPORT	1
28	402N028	GLISSIERE DU SUPPORT DU BAS	1
29	402N029	BEARING (6005ZZ) QURB010	1
30	402N030	O-RING	1
31	402N031	30 TEETH OBLIQUE GEAR	1
32	402N032	O-RING	1
33	402N033	SHAFT	1
34	402N034	30 TEETH OBLIQUE GEAR	1
35	402N035	O-RING	1
36	402N036	OIL LESS BEARING	1
37	402N037	BOWL SUPPORT MICROSWITCH	1
38	402N038	O-RING	1
39	402N039	BOWL LIFT HANDLE	1
40	402N040	O-RING	1
41	402N041	BACK COVER	1
42	402N042	SCREW	1
43	402N043	CHROME RING	1
44	402N044	PLANETARY	1
45	402N045	67 TEETH RING GEAR	1
46	402N046	BEARING (#6204) QURB10	1
47	402N047	21 TEETH PIGNON GEAR	1
48	402N048	COOLING FAN	1
49	402N049	SPEED HANDLE ASSEMBLY	1
50	402N050	MECHANICAL CENTRIFUGAL SWITCH	1
51	402N051	SHIFTER BLACK HANDLE	1
52	402N052	PLATINUM SWITCH	1

53	402N053	SPEED HANDLE ASSEMBLY	1
54	402N054	SPEED HANDLE ASSEMBLY	1
55	402N055	OPERATE PLATE	1
56	402N056	1 1/2 HP MOTOR	1
57	402N057	CASE TRANSMISSION	1
58	402N058	CAPACITOR	1
59	402N059	WHEEL BELT 18 TEETH	1
60	402N060	TRANSMISSION BELT	1
61	402N061	TRANSMISSION COVER	1
62	402N062	BEARING (#6204) QURB10	1
63	402N063	BEARING (#6204) QURB10	1
64	402N064	BEARING (#6206) QURB11	1
65	402N065	TRANSMISSION WHEEL BELT 85 TEETH	1
66	402N066	LEVEL KEY	1
67	402N067	STOP NUT	1
68	402N068	GREASE PLUG	1
69	402N069	FRONT GUARD SLAB	1
70	402N070	NUT FOR # 47	1
71	402N071	O-RING	1
72	402N072	LEAD-IN GREASE PAD	1
73	402N073	CLUTCH GEAR ASSEMBLY	1
74	402N074	CLUTCH GEAR ASSEMBLY	1
75	402N075	BEVEL GEAR 52 TEETH	1
76	402N076	CLUTCH GEAR ASSEMBLY	1
77	402N077	CLUTCH GEAR ASSEMBLY	1
78	402N078A	36 TEETH GEAR FOR OLD MODEL	1
OR	402N078B	35 TEETH GEAR FOR NEW MODEL	1
79	402N079	BRASS BUSHING	1
80	402N080	8 MM x 40 MM KEY	1
81	402N081	BRASS BUSHING	1
82	402N082	45 TEETH GEAR	1
83	402N083	SPACER	1
84	402N084	BEARING #6207	1
85	402N085	C CLIP	1
86	402N086	STEEL BUSHING	1
87	402N087	SEAL 72-45-12	1
88	402N088	STOP NUT	1
89	402N089	DRIVEN SHAFT	1
90	402N090	10 MM x 55 MM KEY	1
91	402N091	10 MM x 40 MM KEY	1
92	402N092	SLEEVE CLUTCH	1
93	402N093	FORK ASSEMBLY	1
94	402N094	FORK ASSEMBLY	1
95	402N095	FORK ASSEMBLY	1
96	402N096	FORK ASSEMBLY	1
97	402N097	FORK ASSEMBLY	1
98	402N098	BEARING (#6204) QURB11	1
99	402N099	C CLIP	1
100	402N100	BEARING (#6204) QURB11	1
101	402N101	20 TEETH GEAR	1
102	402N102	STEEL SPACER	1
103	402N103A	15 TEETH MAIN SHAFT (OLD MODELE)	1
OR	402N103B	14 TEETH MAIN SHAFT (NEW MODELE)	1
104	402N104	C CLIP	1

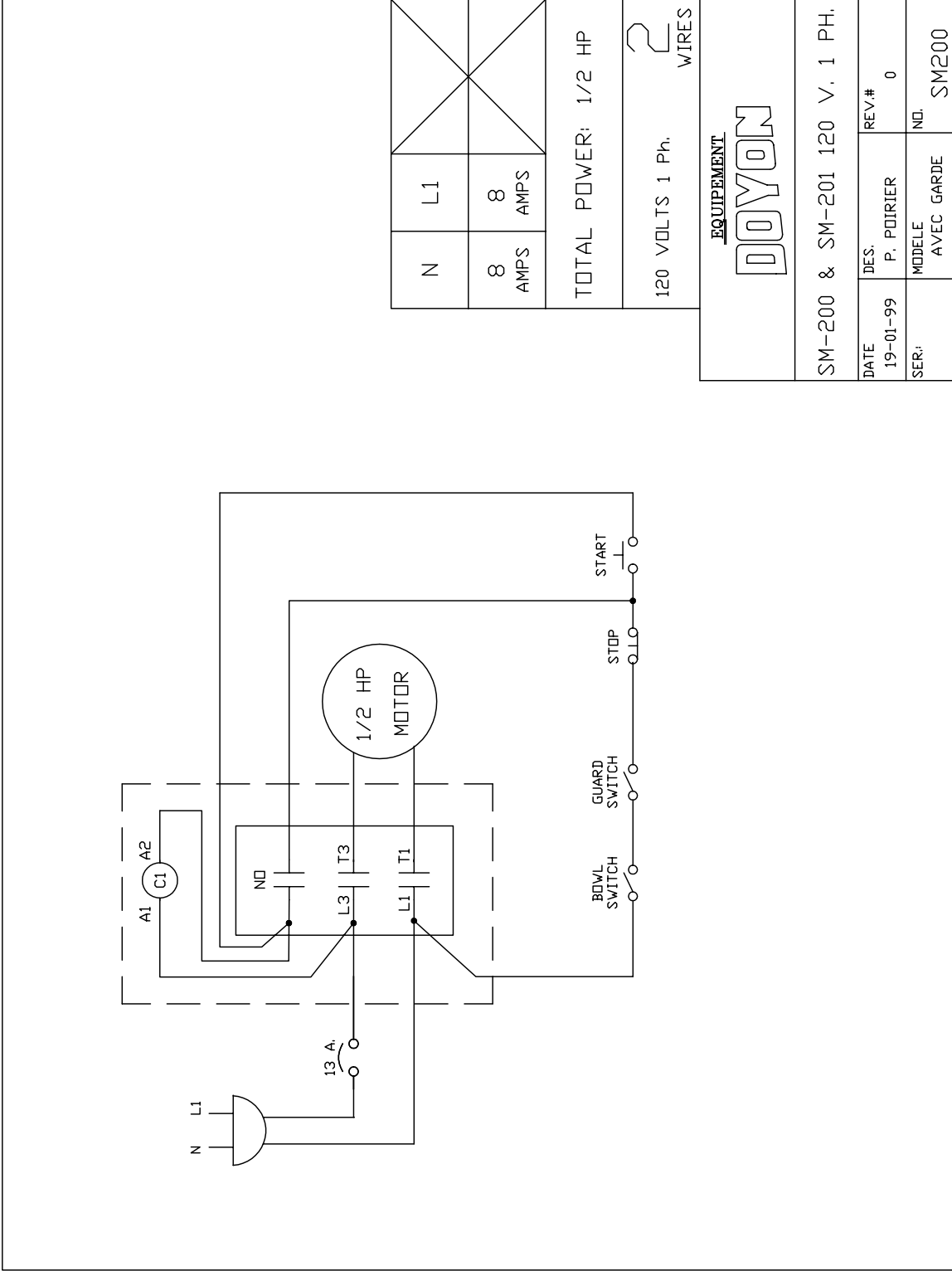
105	402N105	STOP NUT	1
106	402N106A	29 TEETH GEAR (OLD MODEL)	1
OR	402N106B	30 TEETH GEAR (OLD MODEL)	1
107	402N107	13 TEETH TRANSMISSION SHAFT	1
108	402N108	C CLIP	1
109	402N109	STOP NUT	1
110	402N110	STOP NUT	1
111	402N111	KEY	1
112	402N112	KEY	1
113	402N113	SLEEVE BEARING #TA 45 35 FOR 402N007	1
114	402N114	OIL SEAL #TA 45 35 FOR 402N007	1
115	402N115	OIL SEAL (36 X 30 X 3)	1
116	402N116	WASHER FOR # 117	1
117	402N117	BOWL GUARD SCREW	1
118	402N118	BOWL GUARD	1
119	402N119	ELECTRIC BOX	1
120	402N120	OVERLOAD RELAY	1
121	402N121	CONTACTOR	1
122	402N122	START SWITCH	1
123	402N123	STOP SWITCH	1

Model : SM402NA

View : Explode

SECTION
G

ELECTRIC SCHEMATIC



N	L1
8 AMPS	8 AMPS

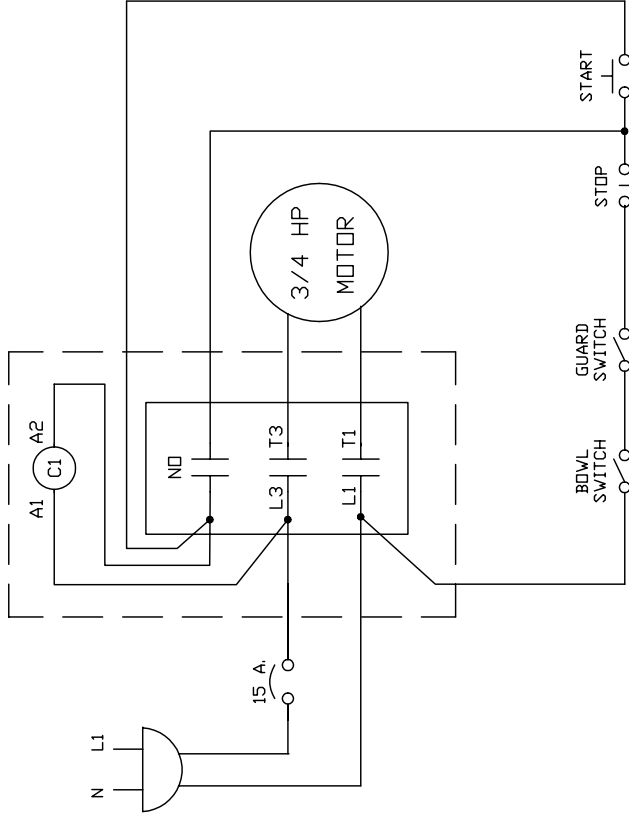
TOTAL POWER: 1/2 HP

120 VOLTS 1 Ph. **2** WIRES

EQUIPEMENT
DOYON

SM-200 & SM-201 120 V. 1 PH.

DATE	DES.	REV.#
19-01-99	P. POIRIER	0
SER.:	MODELE	NO.
	AVEC GARDE	SM200



N	L1
12 AMPS	12 AMPS

TOTAL POWER: 3/4 HP

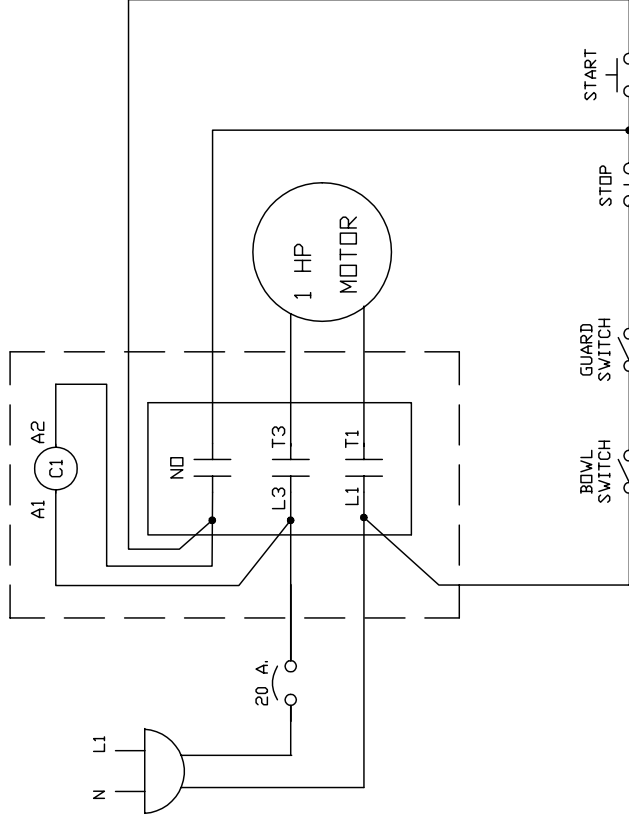
120 VOLTS 1 Ph. **2** WIRES

EQUIPEMENT

DOYON

SM-300 120 V. 1 PH.

DATE	DES.	REV.#
19-01-99	P. POIRIER	0
SER.:	MODELE	NO.
	AVEC GARDE	SM200

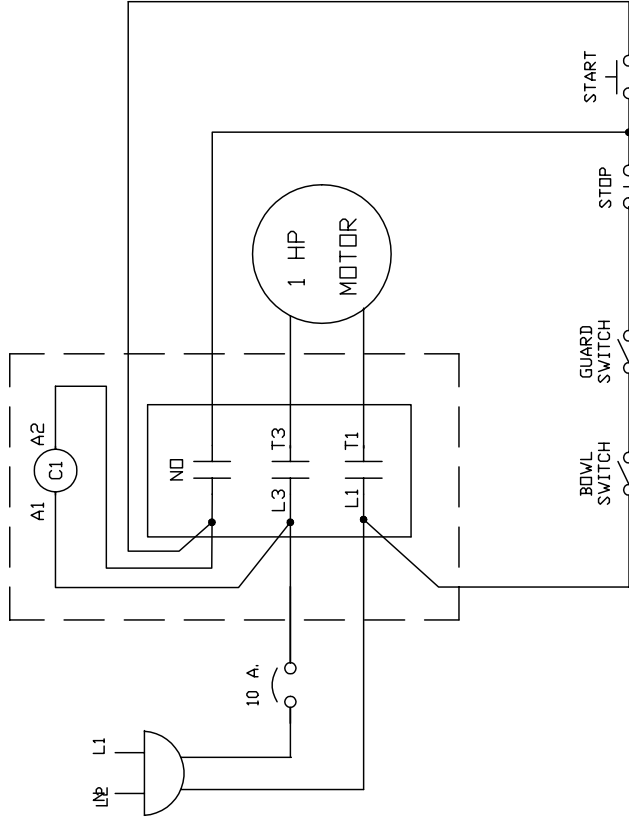


N	L1
14 AMPS	14 AMPS

TOTAL POWER: 1 HP

120 VOLTS 1 Ph. **2** WIRES

EQUIPEMENT	
DOYON	
SM-401 120 V. 1 PH.	
DATE 19-01-99	DES. P. POIRIER
SER.:	REV# 0
MODELE AVEC GARDE	NO. SM200



N	L1
7 AMPS	7 AMPS

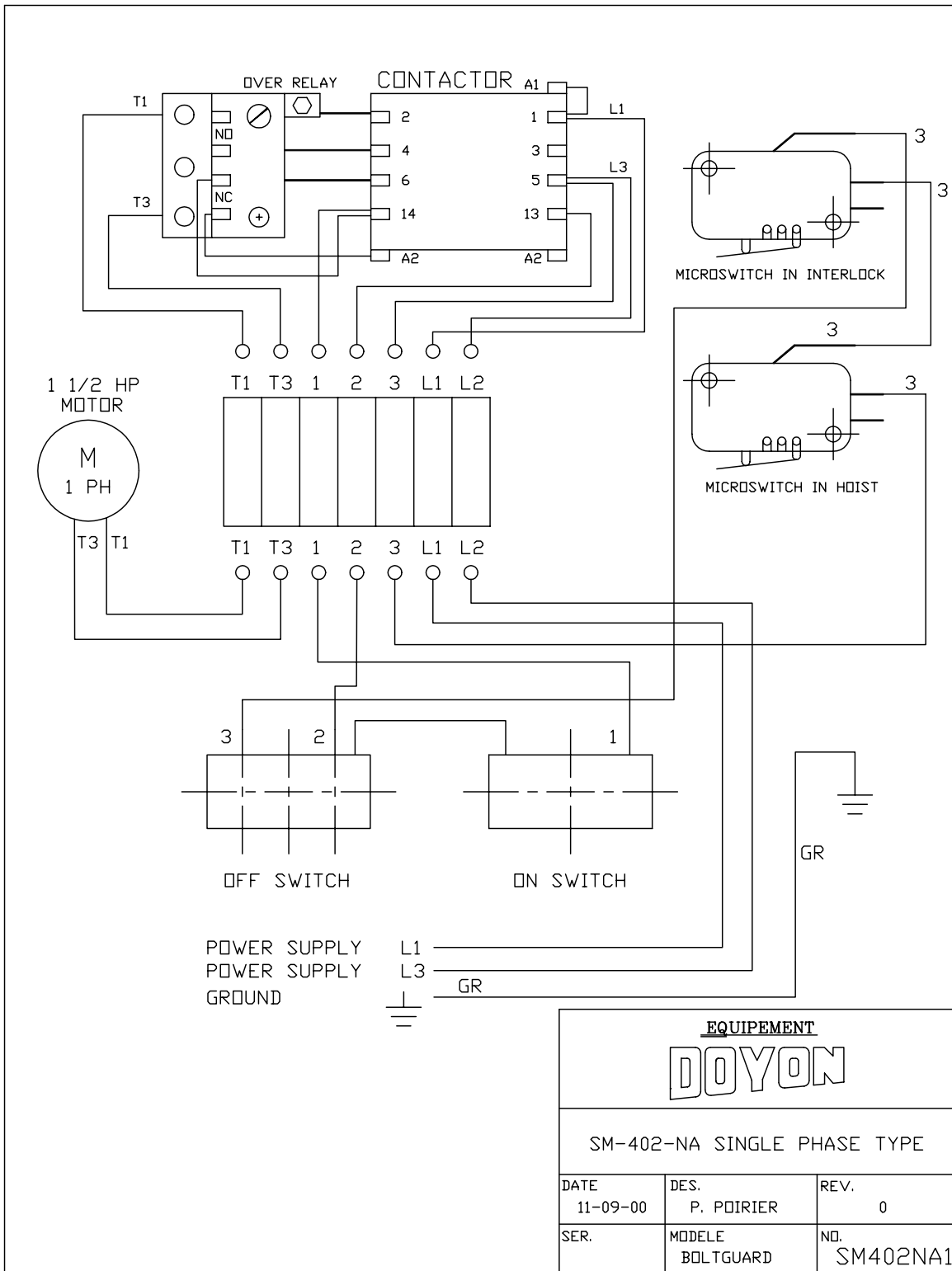
TOTAL POWER: 1 HP

220 VOLTS 1 Ph. **2**
WIRES

EQUIPEMENT
DOYON

SM-401 220 V. 1 PH.

DATE 19-01-99	DES. P. POIRIER	REV.# 0
SER.:	MODELE AVEC GARDE	NO. SM200



LIMITED WARRANTY

(Continental United States Of America And Canada Only)

Doyon Equipment Inc. guarantees to the original purchaser only that its product are free of defects in material and workmanship, under normal use.

This warranty does not cover any light bulbs, thermostat calibration or defects due to or resulting from handling, abuse, misuse, nor shall it extend to any unit from which the serial number has been removed or altered, or modifications made by unauthorized service personnel or damage by flood, fire or other acts of God. Nor will this warranty apply as regards to the immersion element damaged by hard water.

The extent of the manufacturer's obligation under this warranty shall be limited to the replacement or repair of defective parts within the warranty period. The decision of the acceptance of the warranty will be made by Doyon Equipment service department, which decision will be final.

The purchaser is responsible for having the equipment properly installed, operated under normal conditions with proper supervision and to perform periodic preventive maintenance.

If any parts are proven defective during the period of one year from date of purchase, Doyon Equipment Inc. hereby guarantees to replace, without charge, F.O.B. Linière, Quebec, Canada, such part or parts.

Doyon Equipment Inc will pay the reasonable labor charges in connection with the replacement parts occurring within one year from purchase date. Travel over 50 miles, holiday or overtime charges are not covered. After one year from purchase date, all labor and transportation charges in connection with replacement parts will be the purchaser's responsibility.

Doyon Equipment Inc. does hereby exclude and shall not be liable to purchaser for any consequential or incidental damages including, but not limited to, damages to property, damages for loss of use, loss of time, loss of profits or income, resulting from any breach or warranty.

In no case, shall this warranty apply outside Canada and continental United States unless the purchaser has a written agreement from Doyon Equipment Inc.