

DRIP1, E236, E336, E460
DIGITAL CONTROL

IMPORTANT SAFETY INSTRUCTIONS
SAVE THESE INSTRUCTIONS

DANGER
TO REDUCE THE RISK OF FIRE OR ELECTRIC SHOCK,
CAREFULLY FOLLOW THESE INSTRUCTIONS

TABLE OF CONTENTS

<u>SECTION « A » DESCRIPTION</u>	<u>PAGE</u>
Installation and maintenance manual	A1
Construction	A2
Shipping	A2
Warnings	A3
Distances to respect	A4
Installation	A4
Operation of unit	A5
Troubleshooting	A6
Maintenance and cleaning	A7
For more information, please contact our office:	A9
 <u>SECTION « B » DIMENSIONS</u>	
DRIP1	B1
E236	B3
E336	B6
E460	B9
 <u>SECTION « E » COMPONENT PARTS</u>	
Front view component parts for all models (except E460)	E1
Front view for E460	E3
DRIP1	E5
E236	E7
E336	E9
E460	E11

SECTION « G » ELECTRIC SCHEMATICS

DRIP1 - 120V/1PH/60HZ	G1
DRIP1 - 120V/208V/1PH & 120V/240V/1PH	G2
DRIP1 - 220V/1PH/60 Hz	G3
DRIP1 - 220V/1PH/50 Hz	G4
E236 - 120V/208V/1PH & 120V/240V/1PH	G5
E236 - 208V/3PH & 240V/3PH	G6
E236 - 220V/1PH/60HZ	G7
E236 - 220V/1PH/50HZ	G8
E336 - 120V/208V/1PH & 120V/240V/1PH	G9
E336 - 220V/1PH/50HZ	G10
E460 - 120V/208V/1PH & 120V/240V/1PH	G11
E460 - 220V/1PH/50HZ	G12

Warranty

FAMEA.DOC

REV.01-2005

INSTALLATION AND MAINTENANCE MANUAL

The manufacturer suggests to read this manual carefully.

This proofer is manufactured with first quality material by experienced technicians. Proper installation and maintenance will guarantee a reliable service for years to come.

A nameplate fixed to the front of the proofer specifies the serial number, model number, number of phase, amperage, voltage and frequency.

Drawings, electrical diagram and replacement part numbers are included in this manual. The electrical diagram is affixed in the control panel located on the top of the proofer.

ATTENTION

DOYON is not responsible for damages to the property or the equipment caused by personnel who is not certified by known organizations. The customer is responsible for finding qualified technicians in electricity and plumbing for the installation of the oven.

CONSTRUCTION

You just bought the most advanced proofer in the world, the "DOYON" technology at its best. This proofer is manufactured using the highest quality components and material.

The DOYON equipments are designed with parts that are easy to find.

SHIPPING

For your safety, this equipment is verified by qualified technicians and carefully crated before shipment. The freight company assumes full responsibility concerning the delivery in good condition of the equipment in accepting to transport it.

IMPORTANT

RECEPTION OF THE MERCHANDISE

Take care to verify that the received equipment is not damaged before signing the delivery receipt. If a damage or a lost part is noticed, write it clearly on the receipt. If it is noticed after carrier left, contact immediately the freight company in order that they do their inspection.

We do not assume the responsibility for damages or losses that may occur during transportation.

W A R N I N G S

FOR YOUR SAFETY

**DO NOT STORE OR USE GASOLINE OR OTHER FLAMMABLE VAPORS
AND LIQUIDS IN THE VICINITY OF THIS OR ANY APPLIANCE.**

INSTALLATION AND SERVICE

Installation and service must be done by specialized technicians. Contact a certified electrician and plumber for set up.

The proofer must be connected to the utility and electrically grounded in conformity to the effective local regulations. If these are not established, the oven must be connected according to the Canadian Electrical Code (CSA-C22.1-XX) or National Electrical Code (NFPA 70-XX). Refer to last edition year for XX.

DISTANCES TO RESPECT

- Top of the proofer: a clearance of 24 to 36 inches to the ceiling must exist to permit maintenance.
- Back and sides: 4 inches.

INSTALLATION

IN GENERAL

Take off the packaging material with care. Take off all the material used for packing and accessories.

Each unit is set up to be used with the electrical supply specified on the nameplate fixed on the front of the unit.

1. To the electrician

Electrical supply installation must be in accordance with the electrical rating on the nameplate.

WARNING

The electrician must make sure that the supply cable does not come in contact with the oven top which becomes hot.

2. To the plumber

This equipment is to be installed to comply with the applicable federal, state, or local plumbing codes.

Connect the steam system (1/4 NPT) to the water distribution network.

We highly recommend to use a water softener to eliminate minerals in the water. We suggest you to use CUNO # CFS6135 (Doyon part number PLF240).


WARNING


Do not adjust the needle valves, it has been done at the factory.

OPERATION OF THE DIGITAL CONTROL


1. Turn the main switch to " 1 ".
2. The light inside the proofer will turn ON and the digital control will indicate a code. Then, "PREH" will flash.
3. "PREH" will be displayed on the control until it reaches the set temperature.


To check and modify:

Temperature settings : Press and hold down for 2 seconds the temperature key and adjust with the UP and DOWN arrows. Then, press temperature key to save data or " red  " to exit without saving.

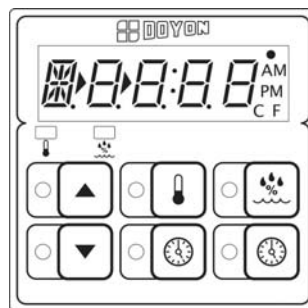
Humidity settings : Press and hold down for 2 seconds the humidity key and adjust with the UP and DOWN arrows. Then, press humidity key to save data or "red  " to exit without saving.

4. When the control reaches the set parameters, "PREH" will disappear and the timer display will appear.

To start the timer, press " green  ", the timer will stop blinking and start countdown. At the end of the countdown an alarm will go off and " READY " will appear on the display.

Press " red  " to stop the alarm.

5. When proofing cycle is completed, turn OFF the switch.



When the proofer is not in operation, open the doors to let out the humidity and prevent mould.

P.S. The doors should not be opened unnecessarily to conserve the heat and humidity in the proofer. The water pan under the proofer's doors should be cleaned daily.

POWER FAILURE

When the power comes back, the proofer will start automatically. It is recommended, when a power failure occurs, to turn off the unit in order to avoid it from starting without supervision.

TROUBLESHOOTING

BEFORE CALLING FOR SERVICE, ANSWERS TO THE MOST FREQUENT QUESTIONS

Always cut off the main power before replacing any parts. Take care of water piping and electric cable.

Control parts on the front.

To remove parts from front panels, you have to go on the top of the unit.

Control panel, proofer unit and refrigeration units. They are located on the top of the unit.

Questions	Solutions
The unit does not turn on when installed.	Check if the light is on. Check if the proofer's switch is on. Check the breaker of the building. Check the breakers located on the front and in the electrical control panel on the top of the unit.
The blower runs but the unit does not produce heat.	Make sure that the thermostat is adjusted to the desired temperature (over ambient temperature) and that the pilot light is lit. Check the breakers in the electrical control panel.
The blower runs but the unit does not produce steam.	Check humidity control settings. Verify if the water valve of the building is open and if water goes into the proofer's unit located on the top of the unit. Check if the water needle valve (of the unit) is opened between a half to one turn. Just close it and open it one turn maximum. Check the breakers in the electrical panel.

MAINTENANCE AND CLEANING

Step by step	Recommendations
Clean the inside of the unit with water and soap.	We recommend and sell: Dirt Buster III : Action foam cleaner CHEMCO Part number : NEB201
Clean the unit exterior with a stainless steel polish.	We recommend and sell: Stainless steel cleaner SANY or CURTIS (comestible) Part number : NES201
Clean the windows with products like Brasso or equivalents. They are copper cleaners but good for this use.	We recommend and sell: Wright's: Cream copper cleaner J.A. Wright & Co. Part number : EXC300

ENTRETIEN: UNITE D'EVAPORATIONMAINTENANCE: WATER COMPARTMENT

NETTOYER LE COMPARTIMENT A VAPEUR REGULIEREMENT : (3-6 MOIS)

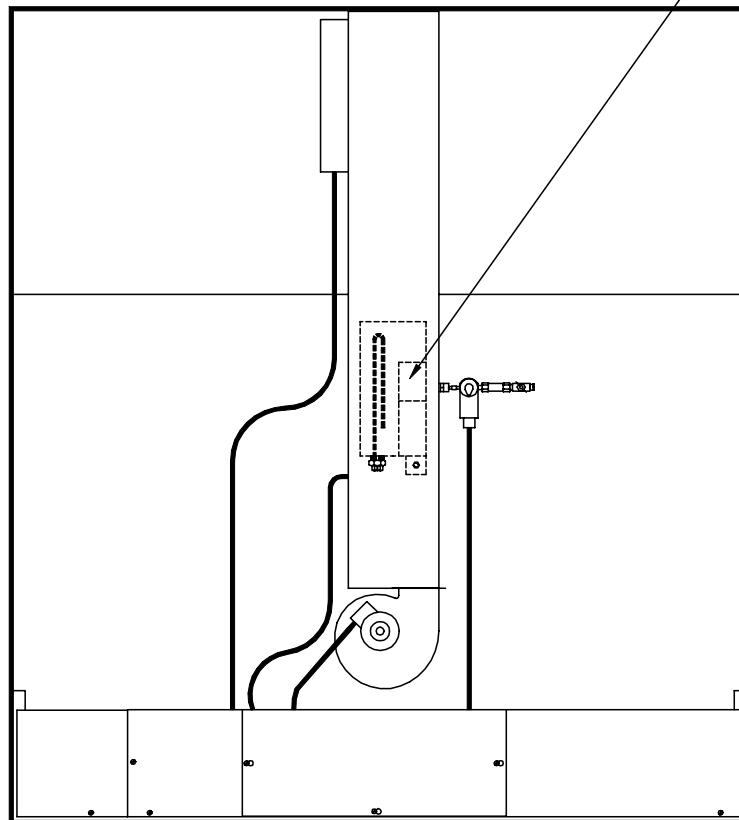
COUPER L'ALIMENTATION ELECTRIQUE PRINCIPALE.
 DEVISSER ET ENLEVER LE COUVERT DE L'UNITE DE VAPEUR.
 VIDER L'EAU DU COMPARTIMENT A VAPEUR.
 NETTOYER L'INTERIEUR; ENLEVER LA BOUE
 ET LES MINERAUX ACCUMULES QUI POURRAIENT EMPECHER
 L'INTERRUPTEUR DE NIVEAU DE FONCTIONNER NORMALEMENT.
 ALLEZ-Y DELICATEMENT POUR NE PAS L'ENDOMMAGER.

AFIN DE PROLONGER LA VIE DES COMPOSANTES DU
 GENERATEUR DE VAPEUR, VOIR A INSTALLER UN FILTRE
 A EAU DE QUALITE QUI PEUT BLOQUER LES MINERAUX
 TEL QUE LE CALCAIRE.

CLEAN WATER PAN REGULARLY : (3-6 MONTH)

DISCONNECT THE MAIN POWER FROM THE UNIT.
 UNSCREW AND REMOVE THE COVER OF THE STEAM UNIT.
 EMPTY THE COMPARTMENT .
 CLEAN THE INSIDE, TAKE OUT THE MUD, SALT
 AND MINERALS THAT CAN JAM THE LEVEL
 SWITCH. TAKE CARE NOT TO BREAK IT.

INSTALL A GOOD QUALITY WATER FILTER
 TO EXTEND LIFE OF THE STEAM GENERATOR.



DESSUS
TOP

FOR MORE INFORMATION,
PLEASE CONTACT OUR OFFICE:

DOYON EQUIPMENT INC.
1255, rue Principale
Linière, Qc, Canada G0M 1J0

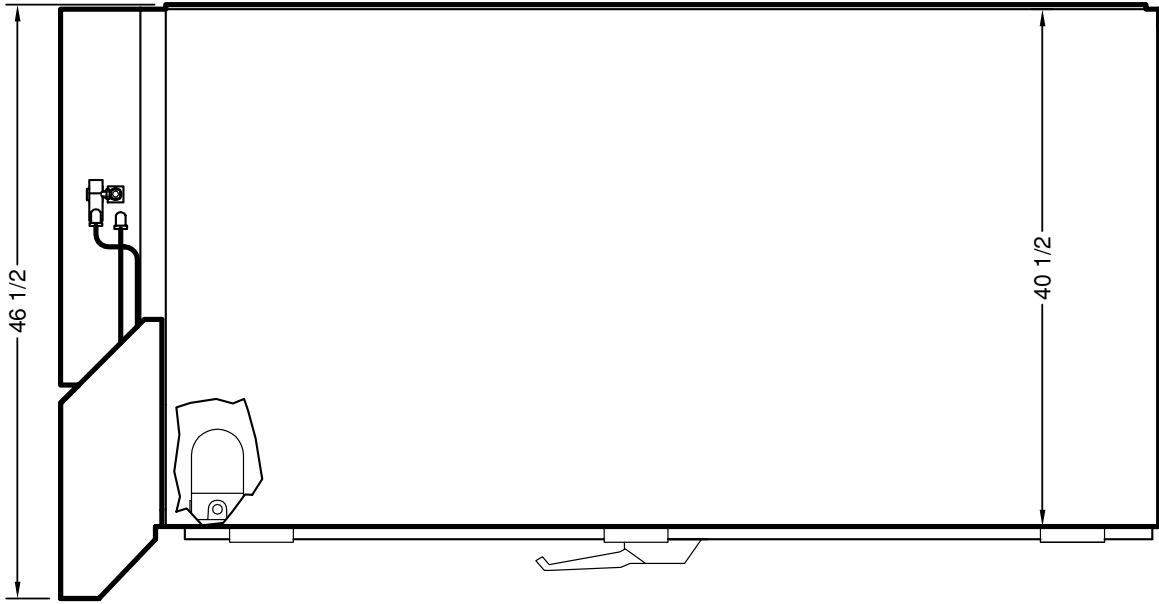
Tel. : 1 (418) 685-3431
Canada : 1 (800) 463-1636
U.S. : 1 (800) 463-4273
FAX : 1 (418) 685-3948

Internet: <http://www.doyon.qc.ca>
E-Mail : doyon@doyon.qc.ca

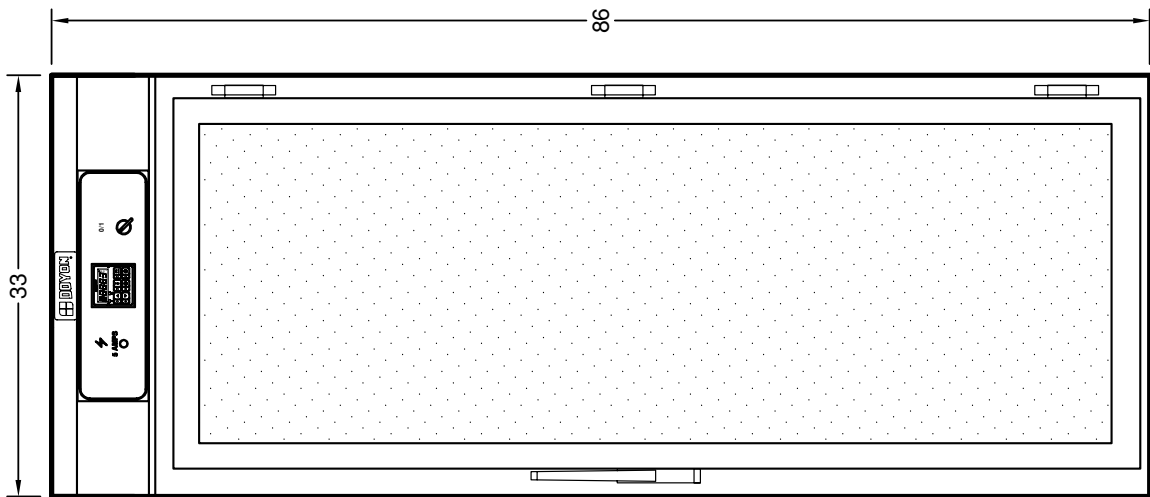
SECTION
B

DIMENSIONS

DRIP1

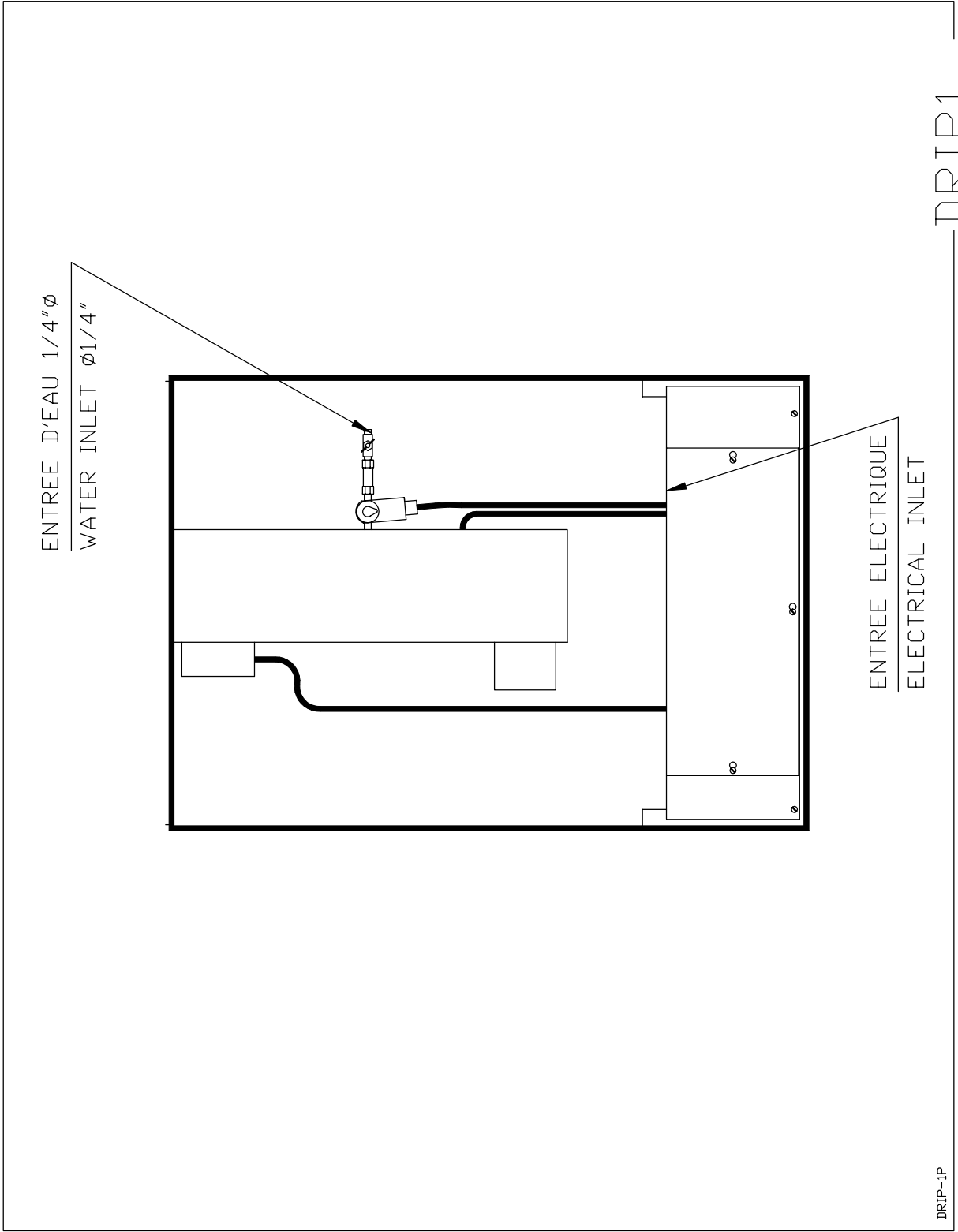


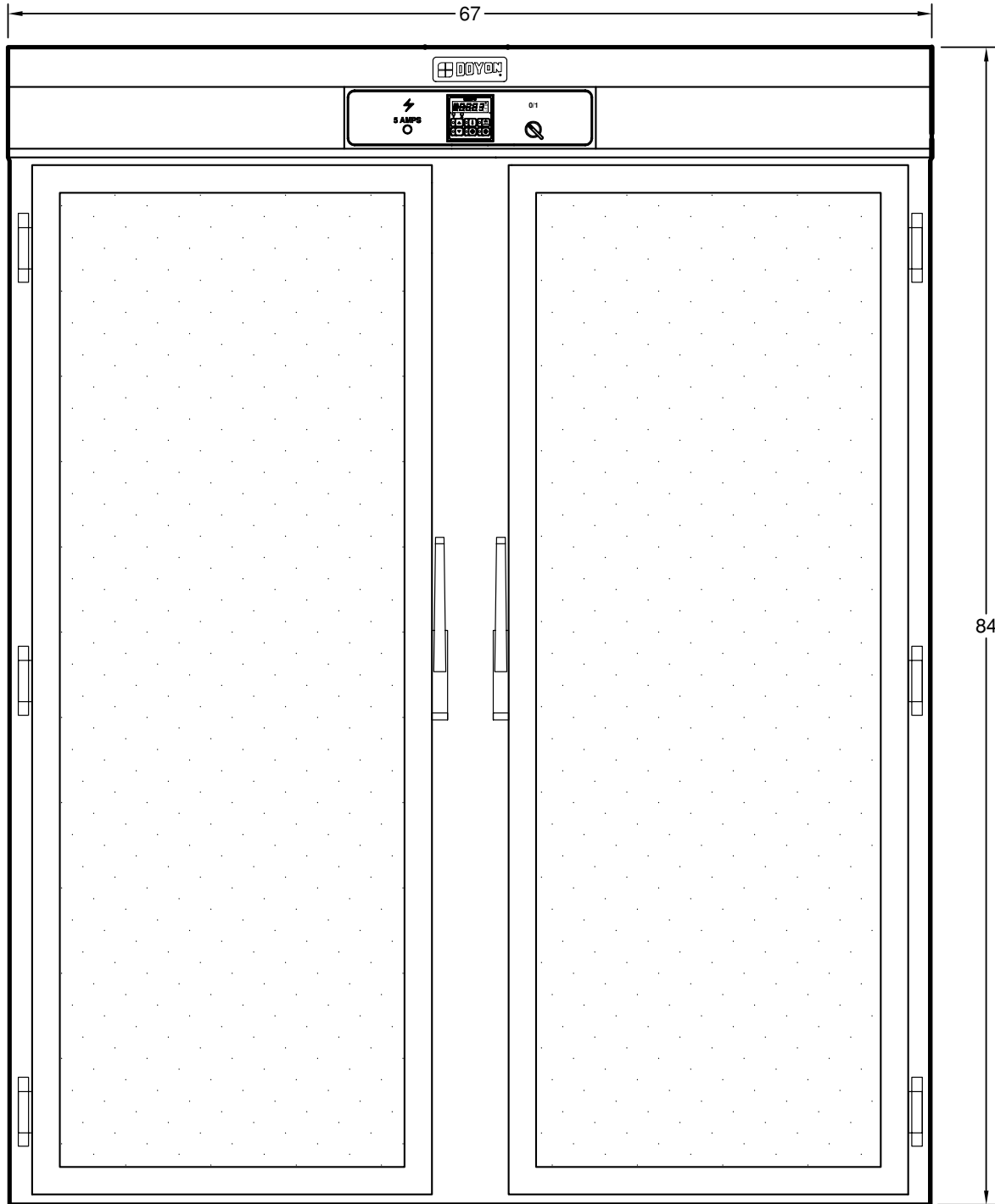
CÔTÉ/SIDE



DEVANT/FRONT

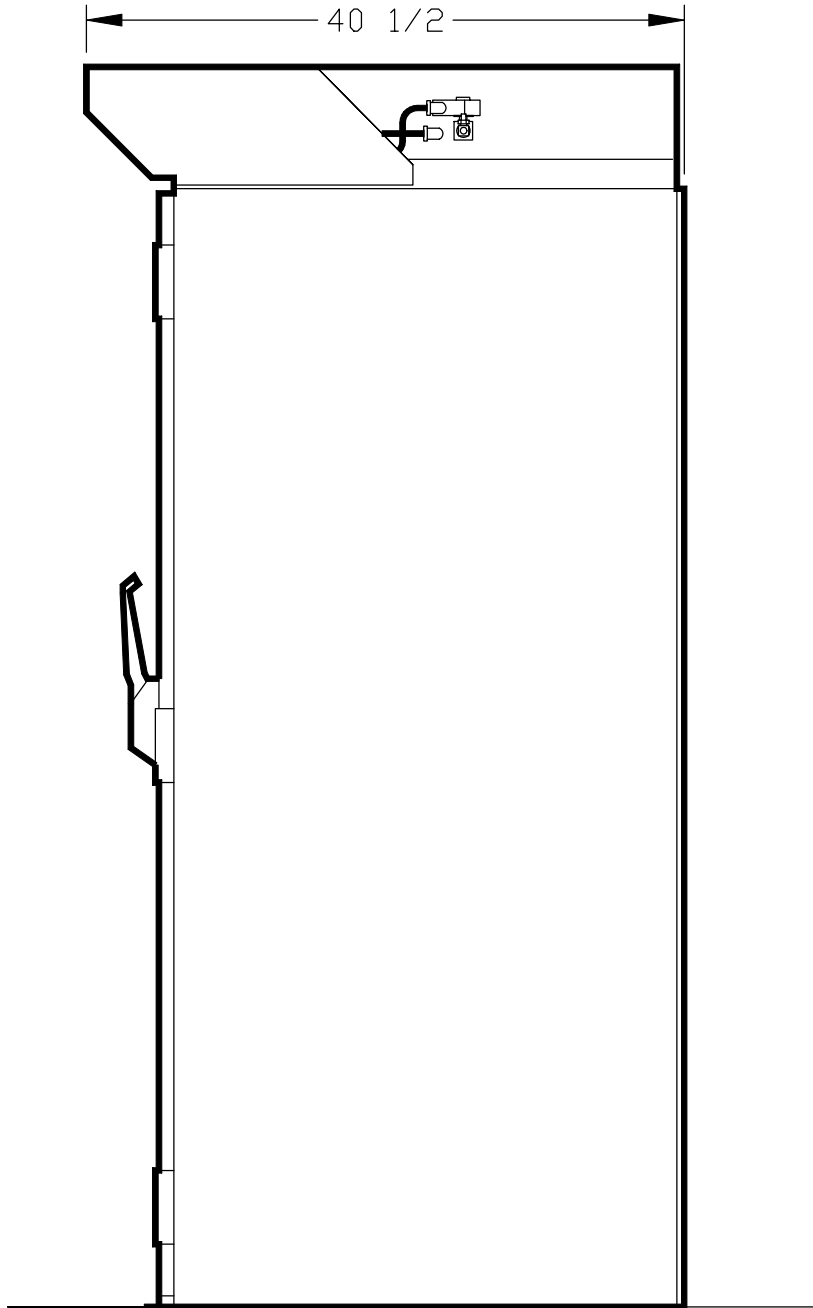
DRIP-1F



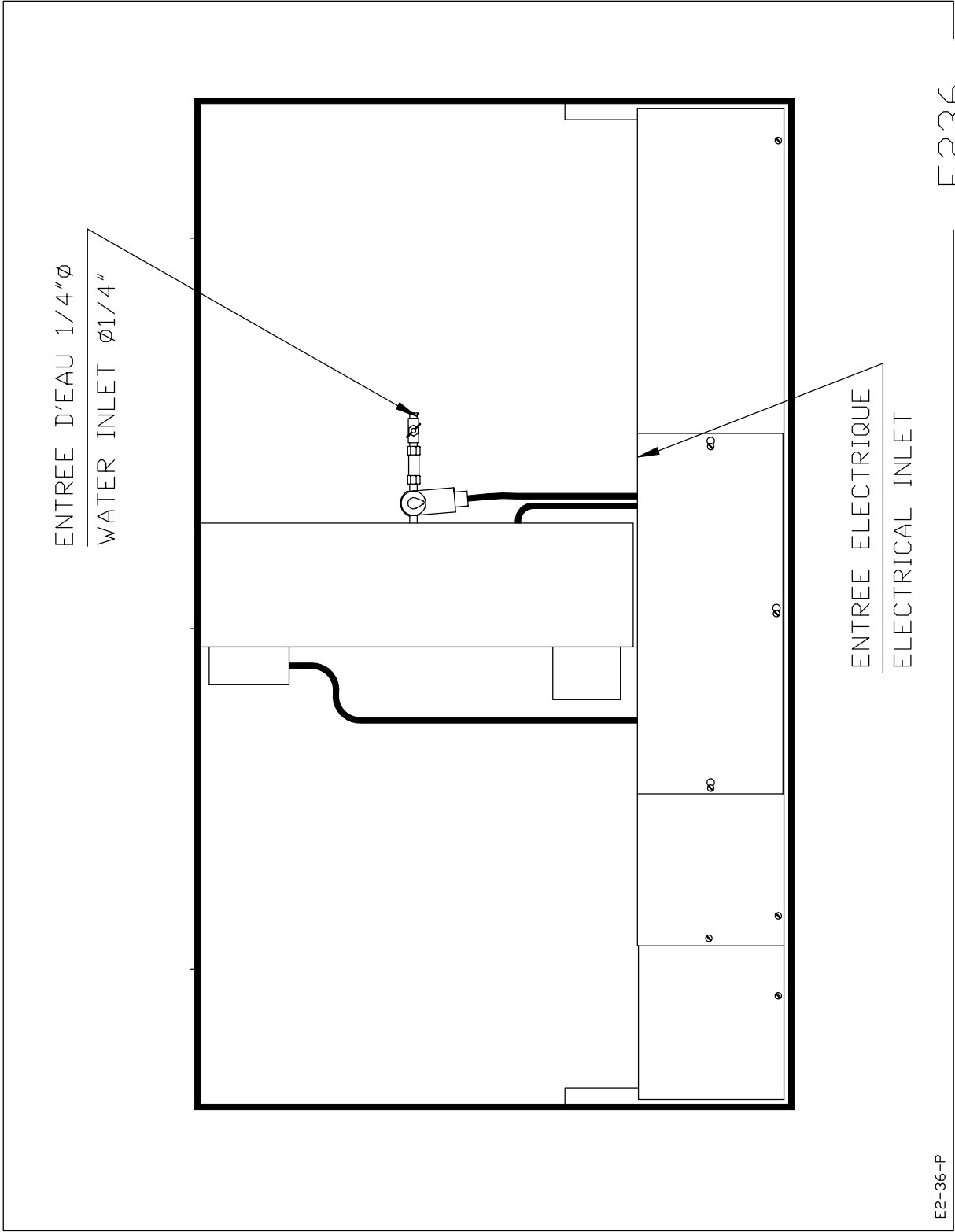


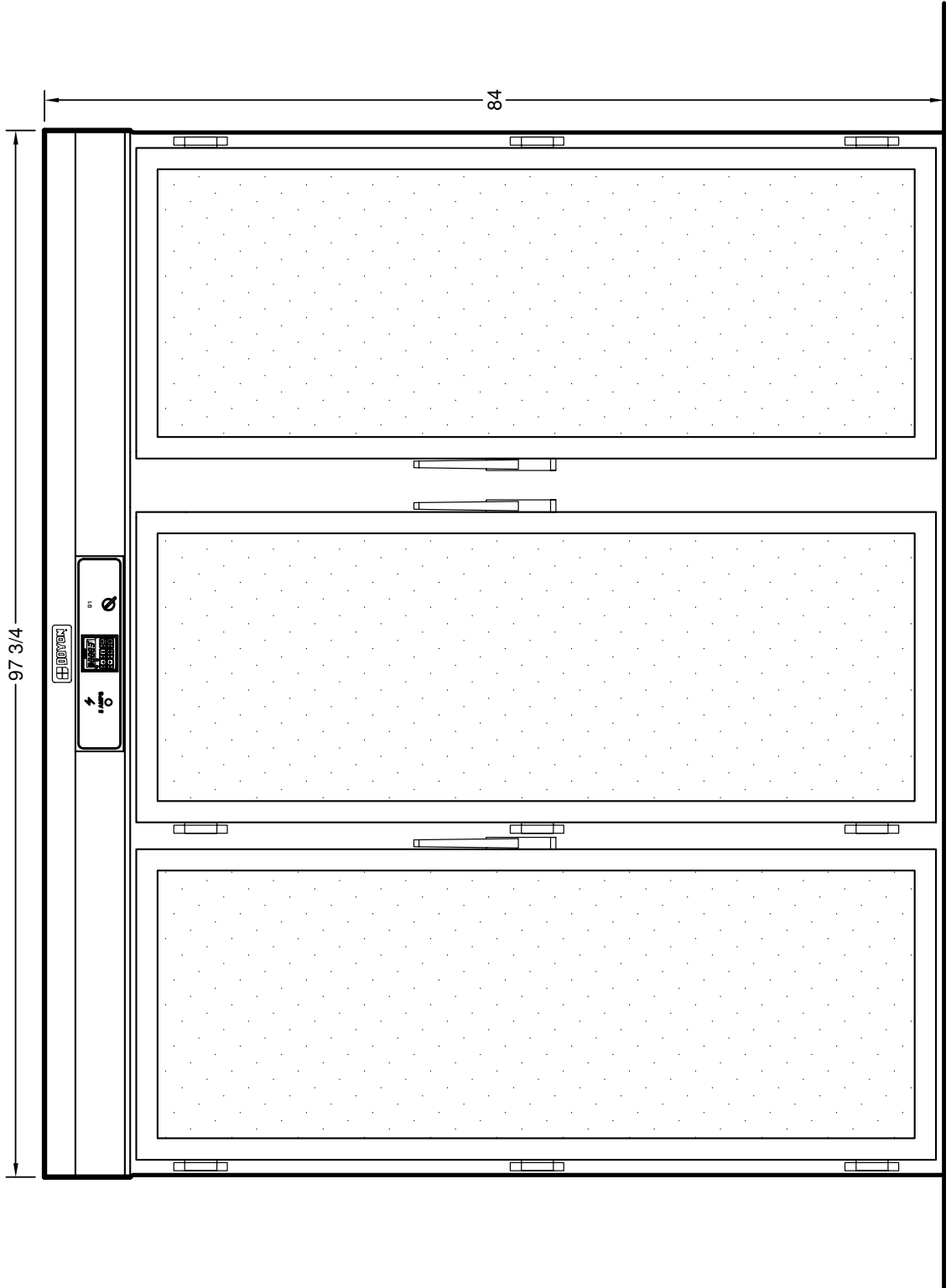
B4

E236



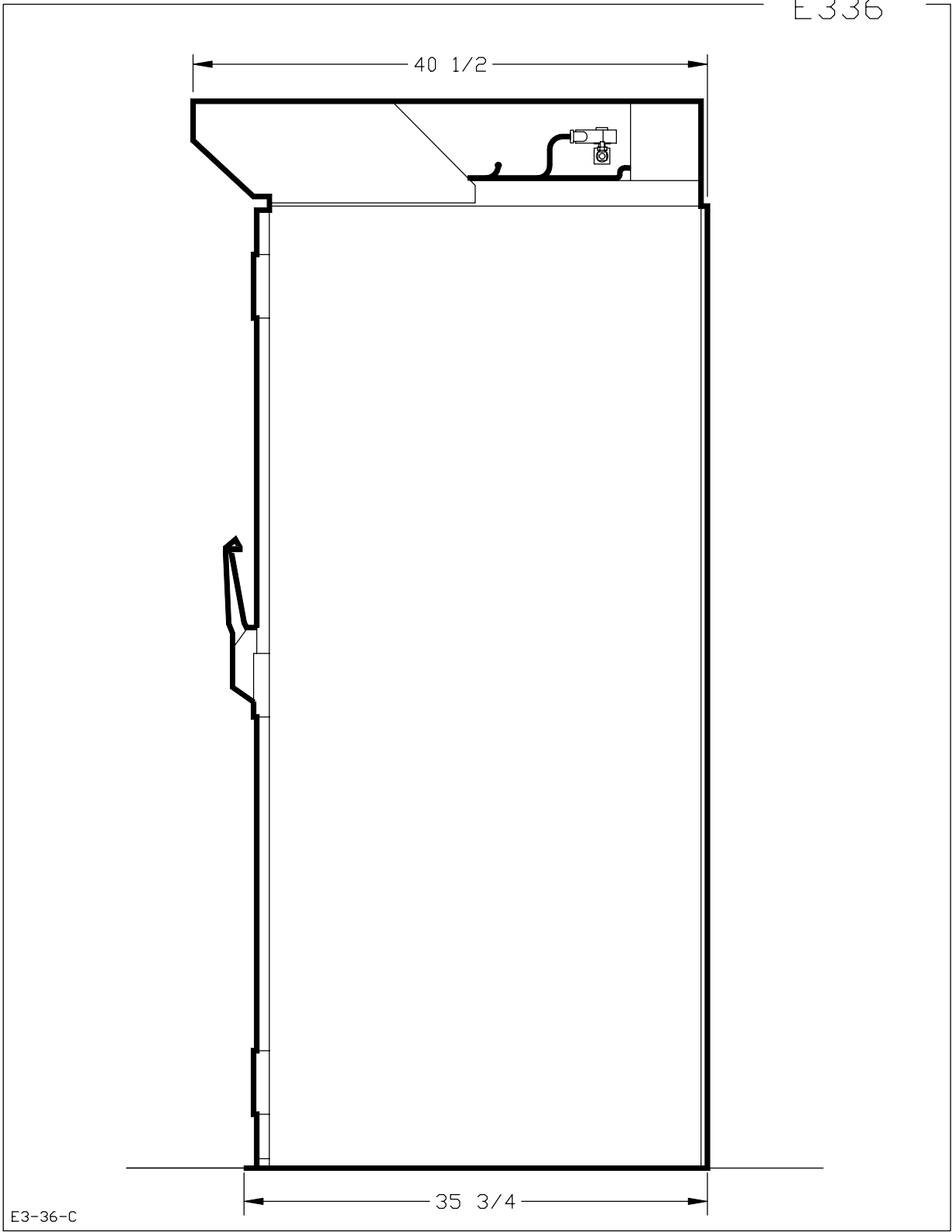
E2-36-C



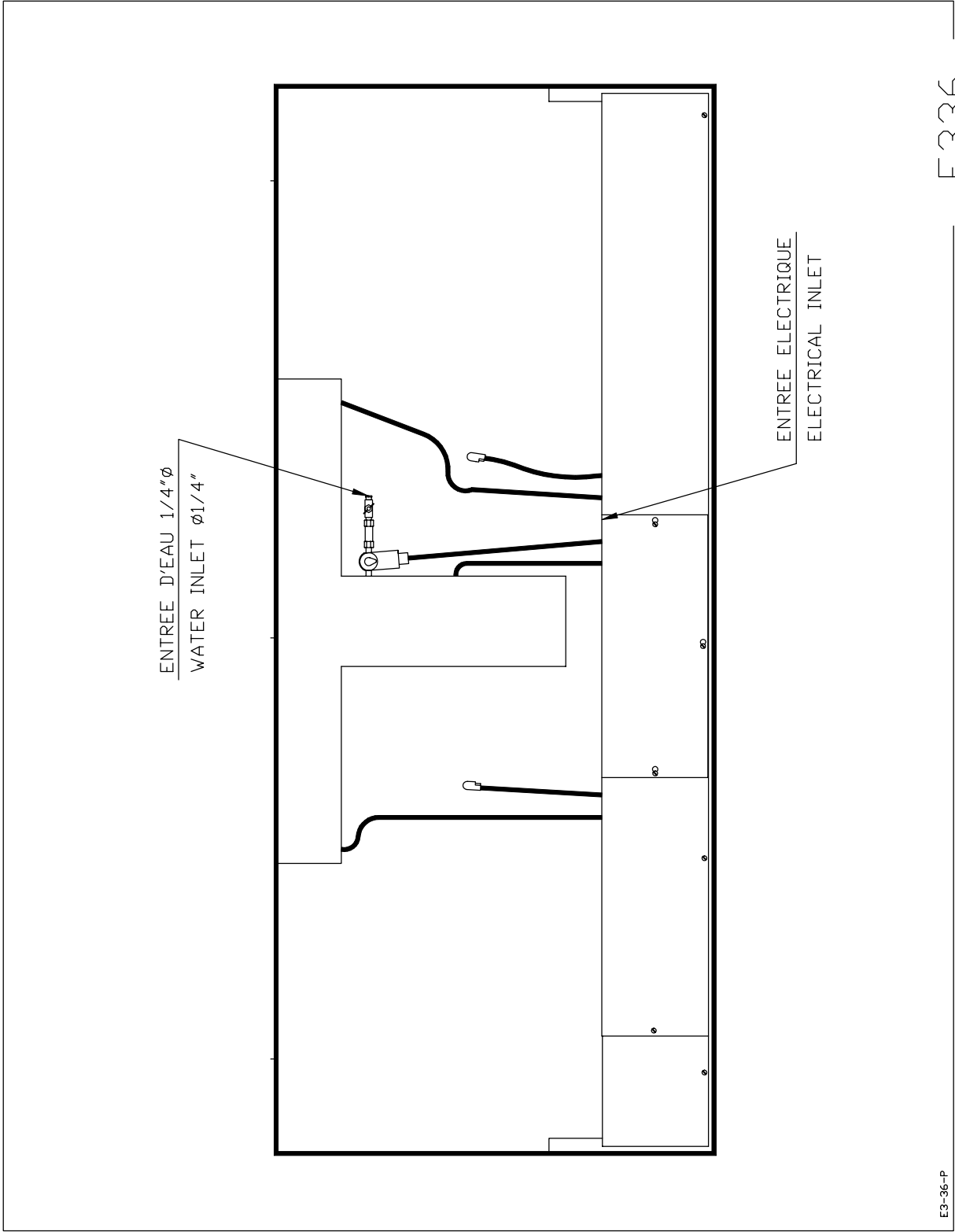


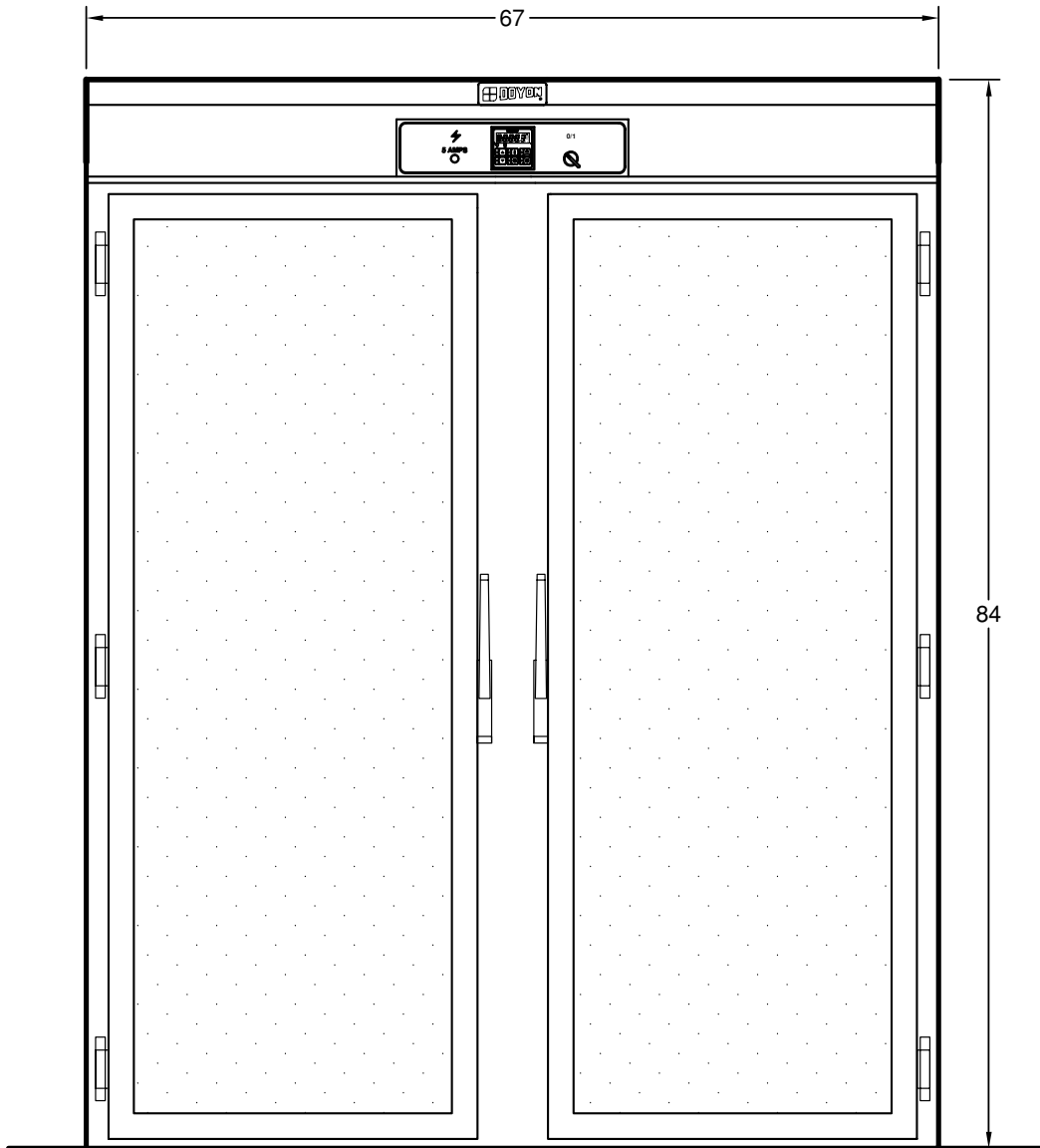
B7

E336



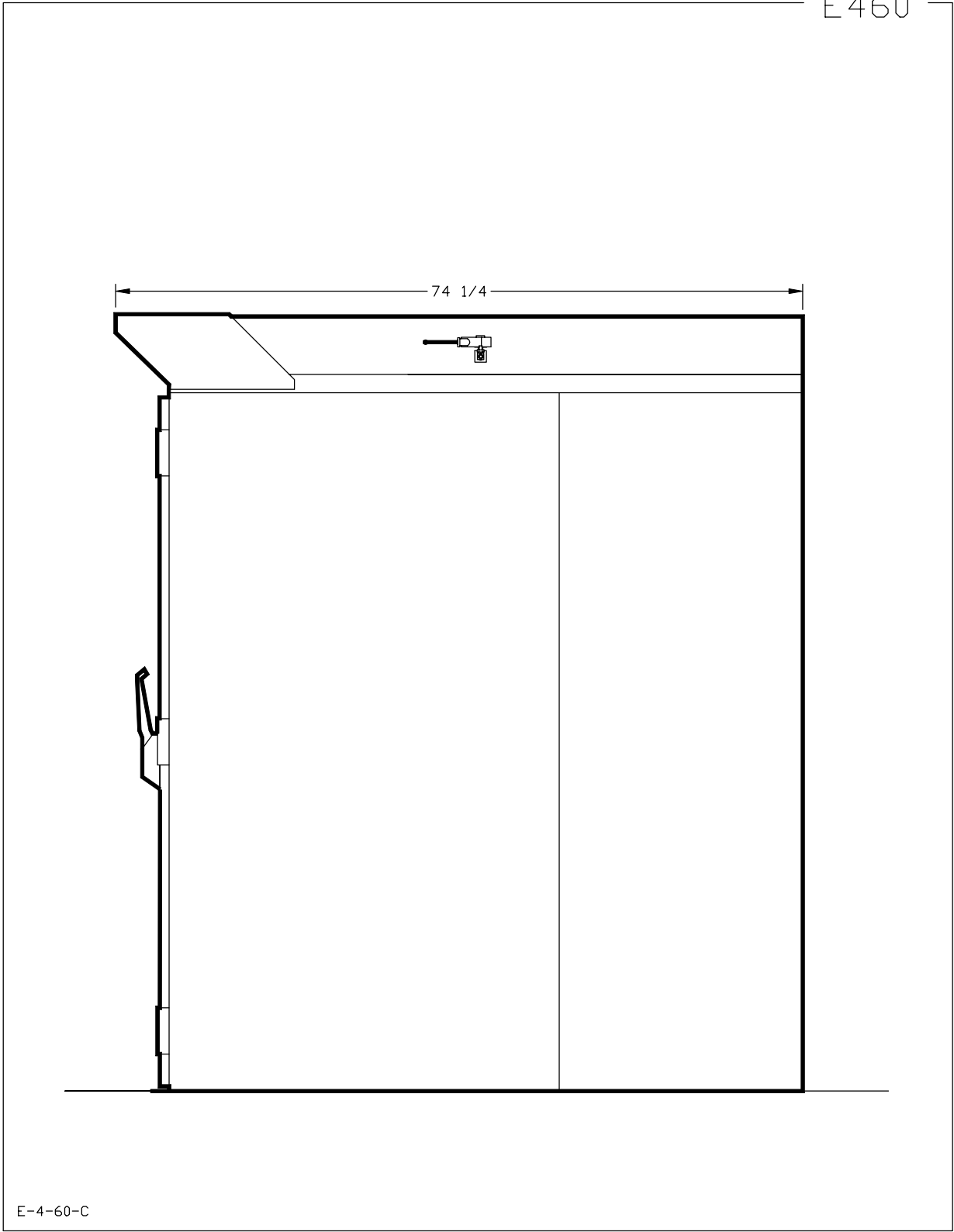
E3-36-C





B10

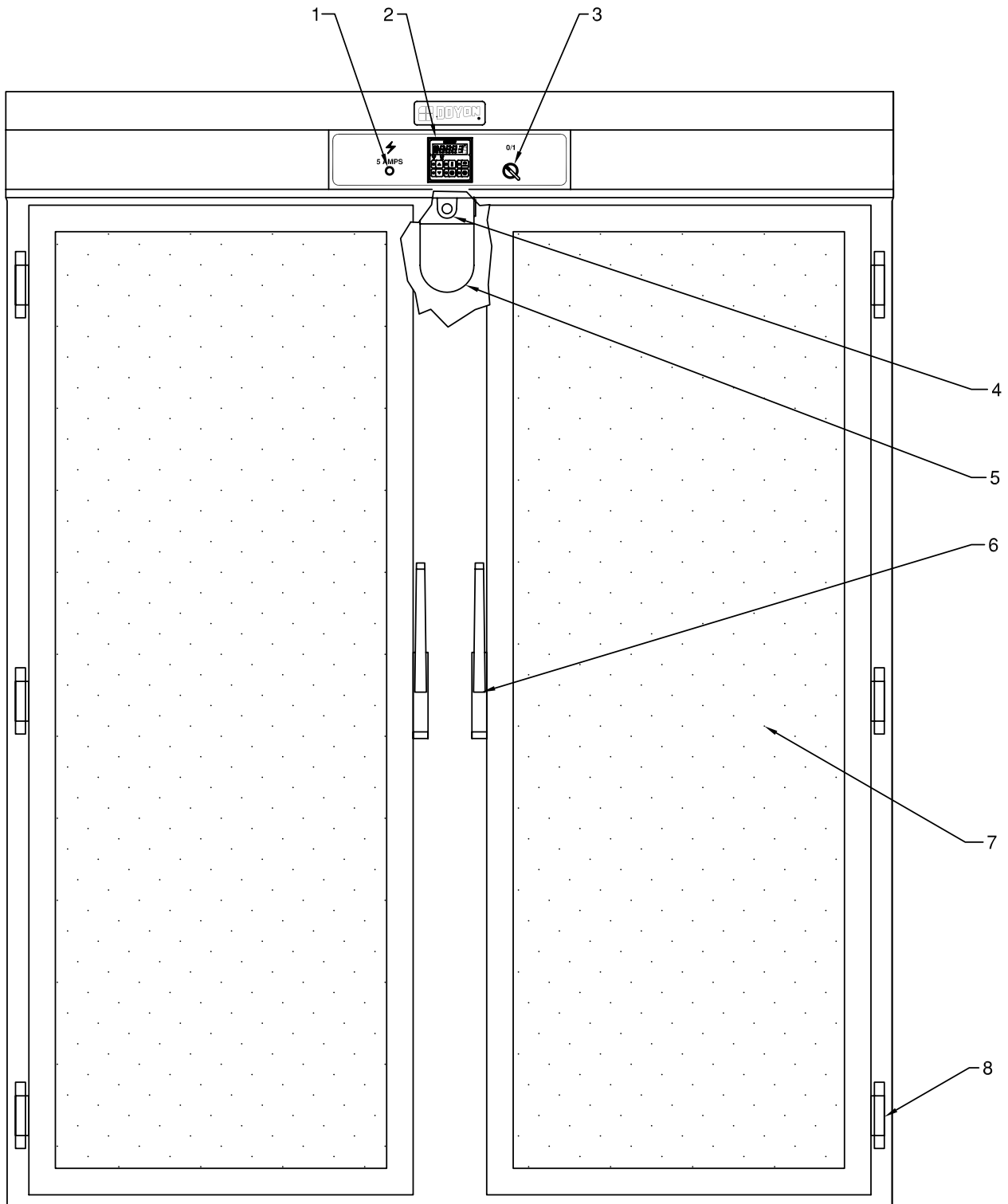
E460



E-4-60-C

SECTION
E

COMPONENT PARTS

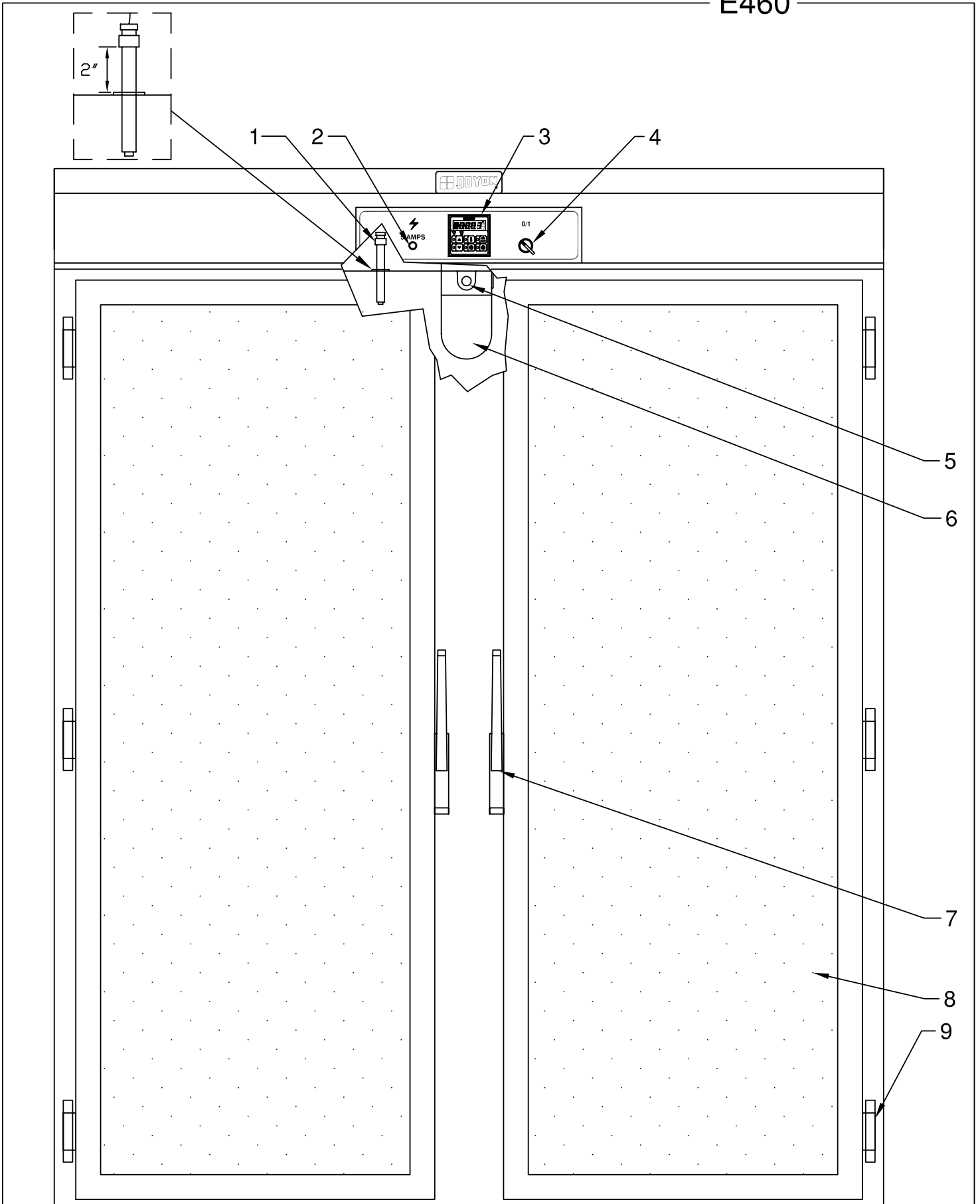


E2

Item	Part Number	Description	Quantity
1	ELB096	5A BREAKER	1
2	ELT540	ELECTRONIC RELATIVE HUMIDITY CONTROL	1
AND	ELT542	DECAL FOR ELT540	1
3	ELI550	MAIN SWITCH (SELECTOR)	1
AND	ELI555	CONTACT BLOCK 1NO	1
4	ELF660	VAPOR TYPE FIXTURE	1
5	ELA275	BULB 60W 130V	1
AND	ELF650	PLASTIC BULB PROTECTOR	1
6	QUP520	MAGNETIC HANDLE	2
7	P2969E	PROOFER DOOR 29 x 69 1/4	2
AND	QUE500	DOOR GASKET(15`)	2
8	QUP320	DOOR HINGE	6

Model : E236

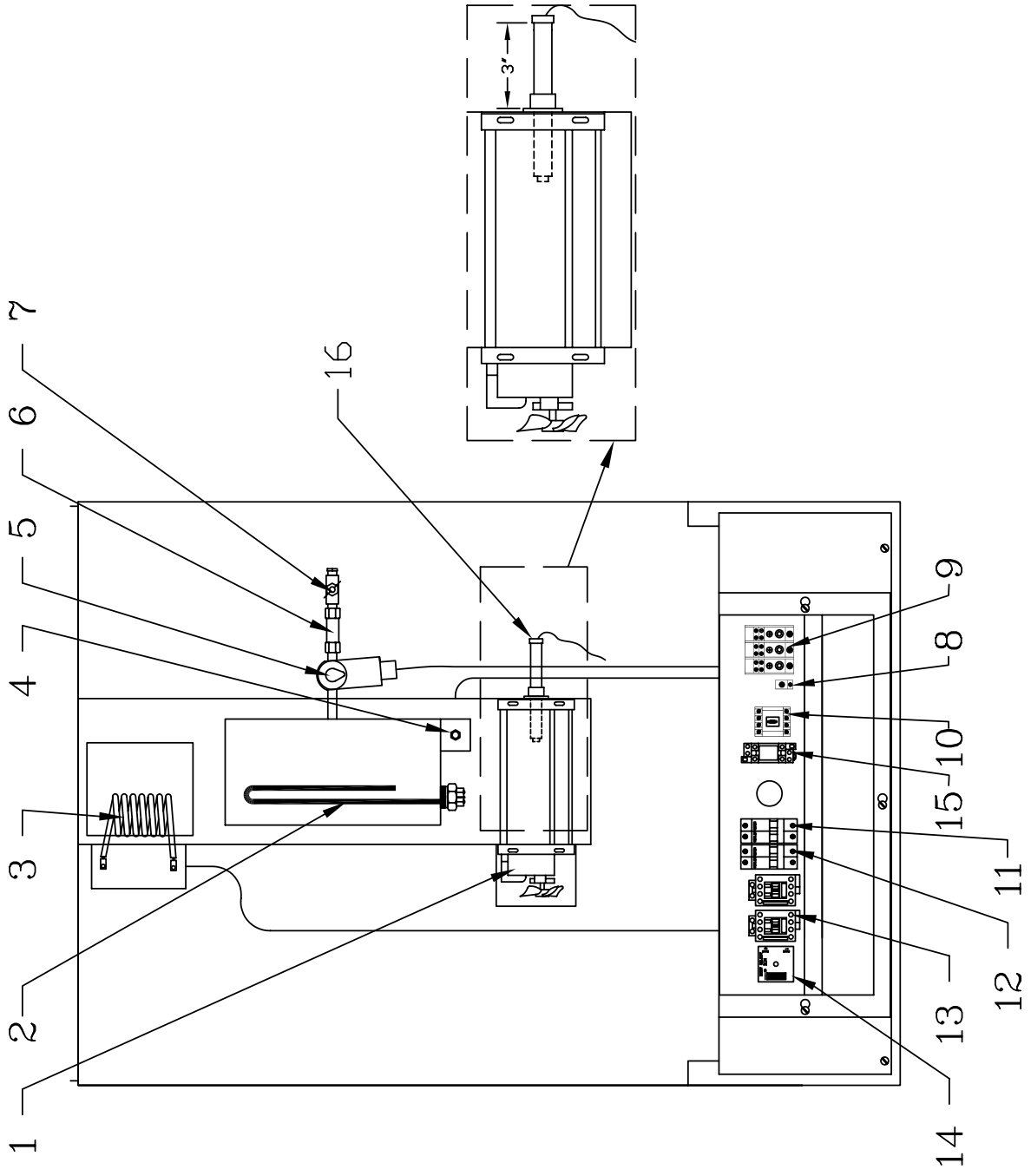
View : FRONT



Item	Part Number	Description	Quantity
1	ELT541	PROBE FOR ELT540	1
2	ELB096	5A BREAKER	1
3	ELT540	ELECTRONIC RELATIVE HUMIDITY CONTROL	1
AND	ELT542	DECAL FOR ELT540	1
4	ELI550	MAIN SWITCH (SELECTOR)	1
AND	ELI555	CONTACT BLOCK 1NO	1
5	ELF660	VAPOR TYPE FIXTURE	1
6	ELA275	BULB 60W 130V	1
AND	ELF650	PLASTIC BULB PROTECTOR	1
7	QUP520	MAGNETIC HANDLE	2
8	P2969E	PROOFER DOOR 29 x 69 1/4	2
AND	QUE500	DOOR GASKET(15`)	2
9	QUP320	DOOR HINGE	6

Model : E460

View : FRONT

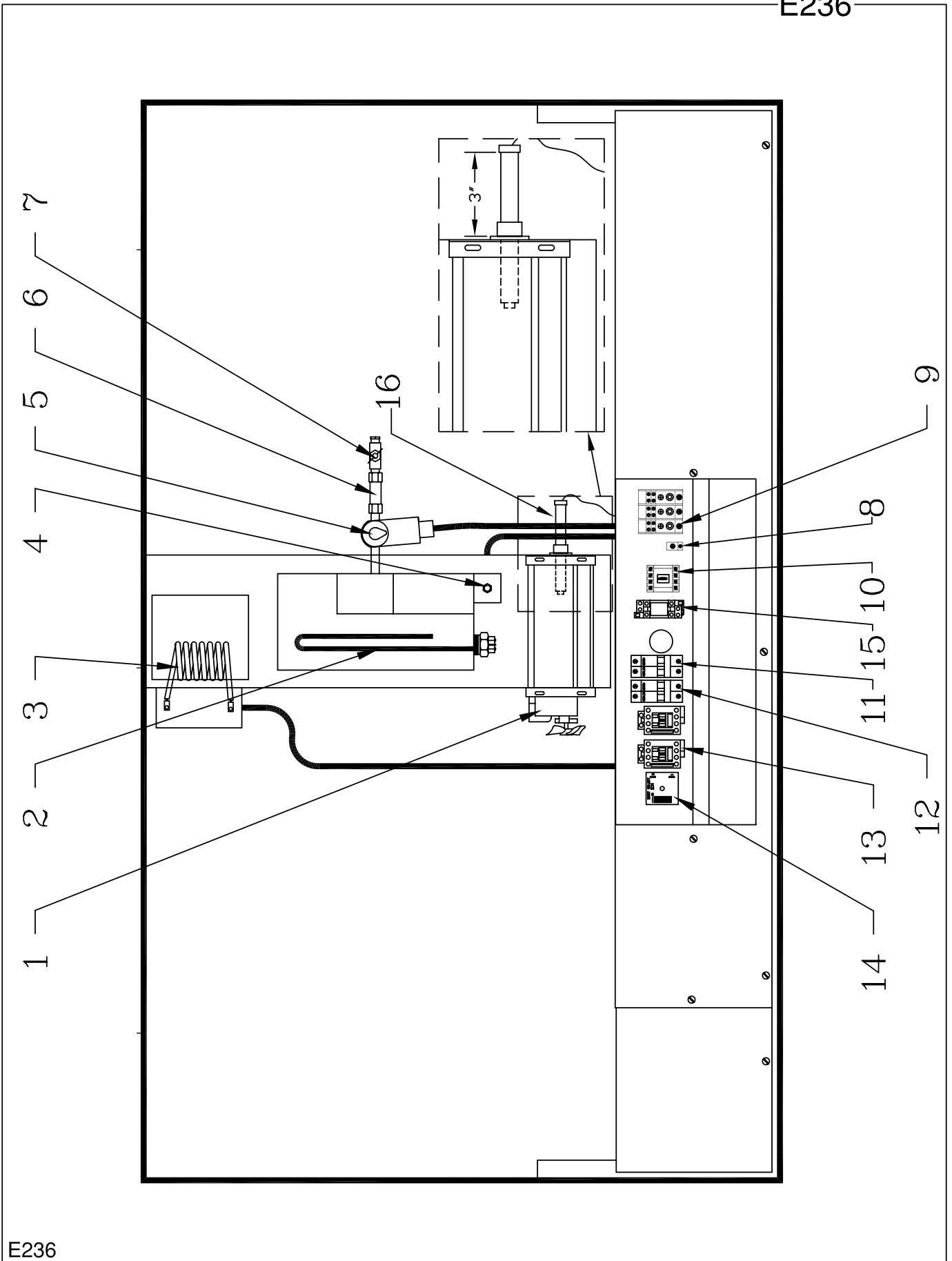


DRIP-1P

Item	Part Number	Description	Quantity
1	ELM731	MOTOR BLOWER 115 CFM	1
2	ELE166	IMMERSION ELEMENT 208V 1500W	1
OR	ELE167	IMMERSION ELEMENT 240V 1500W	1
OR	ELE165	IMMERSION ELEMENT 120V 1500W	1
3	ELE134	COIL ELEMENT 240V 4000W	1
OR	ELE133	COIL ELEMENT 208V 4000W	1
OR	ELE130	COIL ELEMENT 120V 1500W	2
4	QUF350	ELECTRIC FLOAT	1
5	ELS880	SOLENOID VALVE 110/120V 50/60Hz	1
6	PLF100	WATER FILTER	1
7	ELV590	NEEDLE VALVE	1
8	ELL050	GROUND LUG	1
9	ELB072	TERMINAL BLOCK 3P 175A	1
10	ELC615	RELAY 10A 2P COIL 110V	1
AND	ELC617	BASE	1
11	ELB081	20A DOUBLE BREAKER	1
12	ELB082	30A DOUBLE BREAKER	1
13	ELC908	HEATING CONTACTOR	2
14	ELM735	SOLID STATE TIMER ICM	1
15	ELC640	CONTROL RELAY BASE	1
AND	ELC630	CONTROL RELAY 12A COIL 120V	1
16	ELT541	PROBE FOR ELT540	1

Model : DRIP1

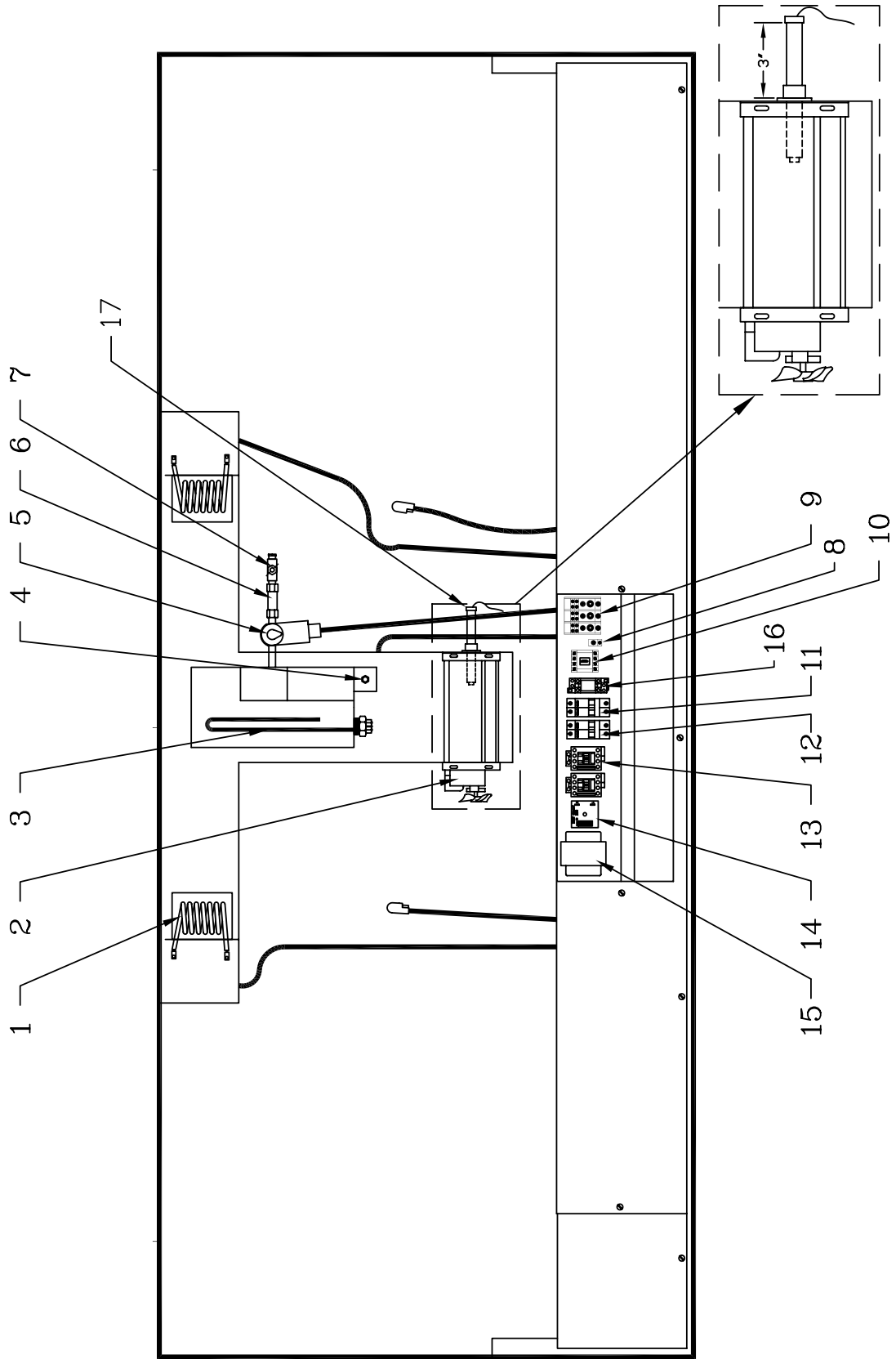
View : TOP



Item	Part Number	Description	Quantity
1	ELM731	MOTOR BLOWER 115 CFM	1
2	ELE168	IMMERSION ELEMENT 240V 3000W	1
OR	ELE169	IMMERSION ELEMENT 208V 3000W	1
3	ELE134	COIL ELEMENT 240V 4000W	1
OR	ELE133	COIL ELEMENT 208V 4000W	1
4	QUF350	ELECTRIC FLOAT	1
5	ELS880	SOLENOID VALVE 110/120V 50/60Hz	1
6	PLF100	WATER FILTER	1
7	ELV590	NEEDLE VALVE	1
8	ELL050	GROUND LUG	1
9	ELB072	TERMINAL BLOCK 3P 175A	1
10	ELC615	RELAY 10A 2P COIL 110V	1
AND	ELC617	BASE	1
11	ELB081	20A DOUBLE BREAKER	1
12	ELB082	30A DOUBLE BREAKER	1
13	ELC908	HEATING CONTACTOR	2
14	ELM735	SOLID STATE TIMER ICM	1
15	ELC640	CONTROL RELAY BASE	1
AND	ELC630	CONTROL RELAY 12A COIL 120V	1
16	ELT541	PROBE FOR ELT540	1

Model : E236

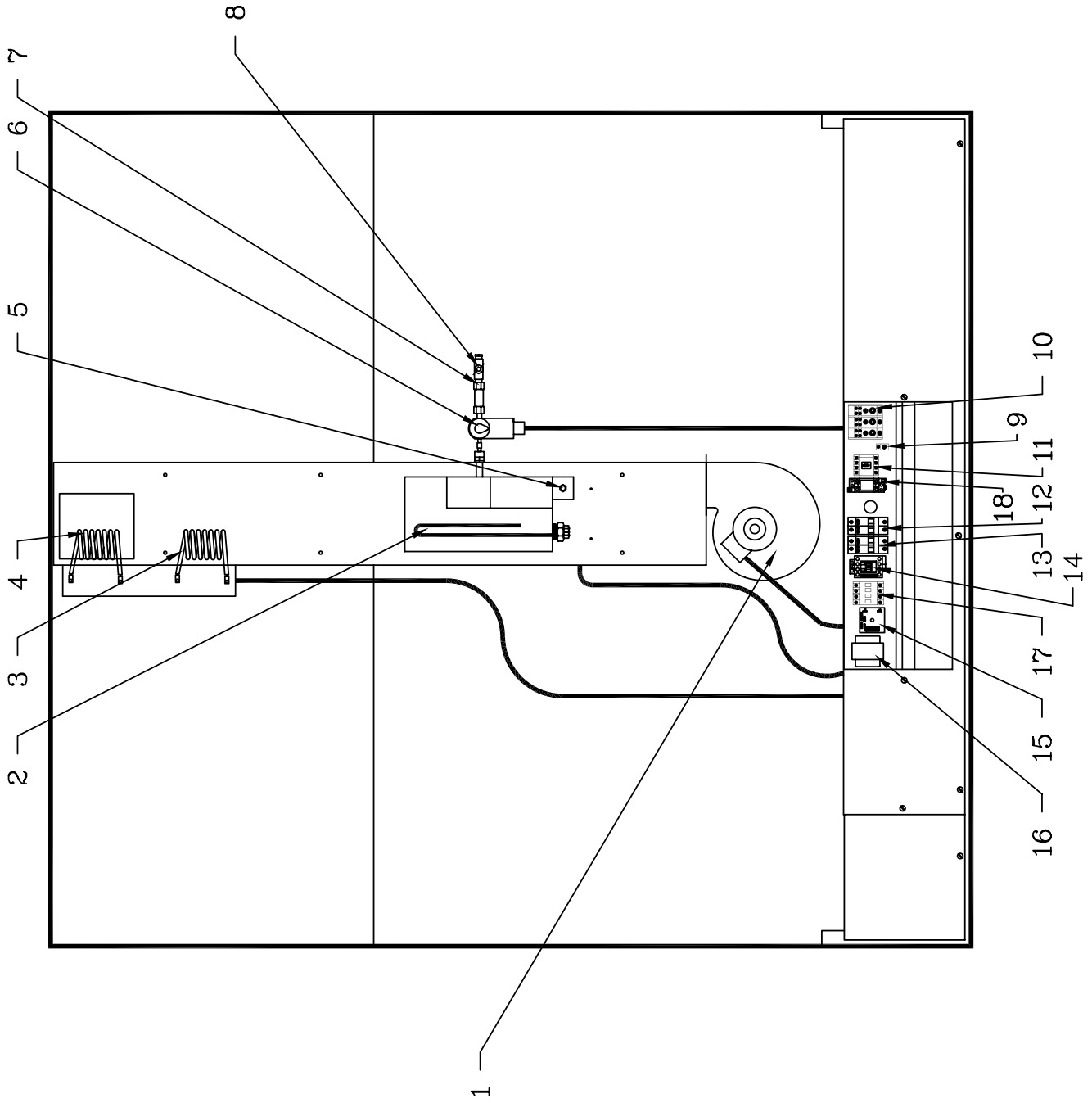
View : TOP



Item	Part Number	Description	Quantity
1	ELE116	COIL ELEMENT 240V 2000W	2
OR	ELE106	COIL ELEMENT 208V 2000W	2
2	ELM731	MOTOR BLOWER 115 CFM	1
3	ELE168	IMMERSION ELEMENT 240V 3000W	1
OR	ELE169	IMMERSION ELEMENT 208V 3000W	1
4	QUF350	ELECTRIC FLOAT	1
5	ELS880	SOLENOID VALVE 110/120V 50/60Hz	1
6	PLF100	WATER FILTER	1
7	ELV590	NEEDLE VALVE	1
8	ELL050	GROUND LUG	1
9	ELB072	TERMINAL BLOCK 3P 175A	1
OR	ELB071	TERMINAL BLOCK 2P 175A 1PHASE	1
10	ELC615	RELAY 10A 2P COIL 110V	1
AND	ELC617	BASE	1
11	ELB081	20A DOUBLE BREAKER	1
12	ELB082	30A DOUBLE BREAKER	1
13	ELC908	HEATING CONTACTOR	2
14	ELM735	SOLID STATE TIMER ICM	1
15	ELT720	TRANSFORMER 240/120V 200VA(MODEL 220V 50Hz ONLY)	1
16	ELC640	CONTROL RELAY BASE	1
AND	ELC630	CONTROL RELAY 12A COIL 120V	1
17	ELT541	PROBE FOR ELT540	1

Model : E336

View : TOP



E12

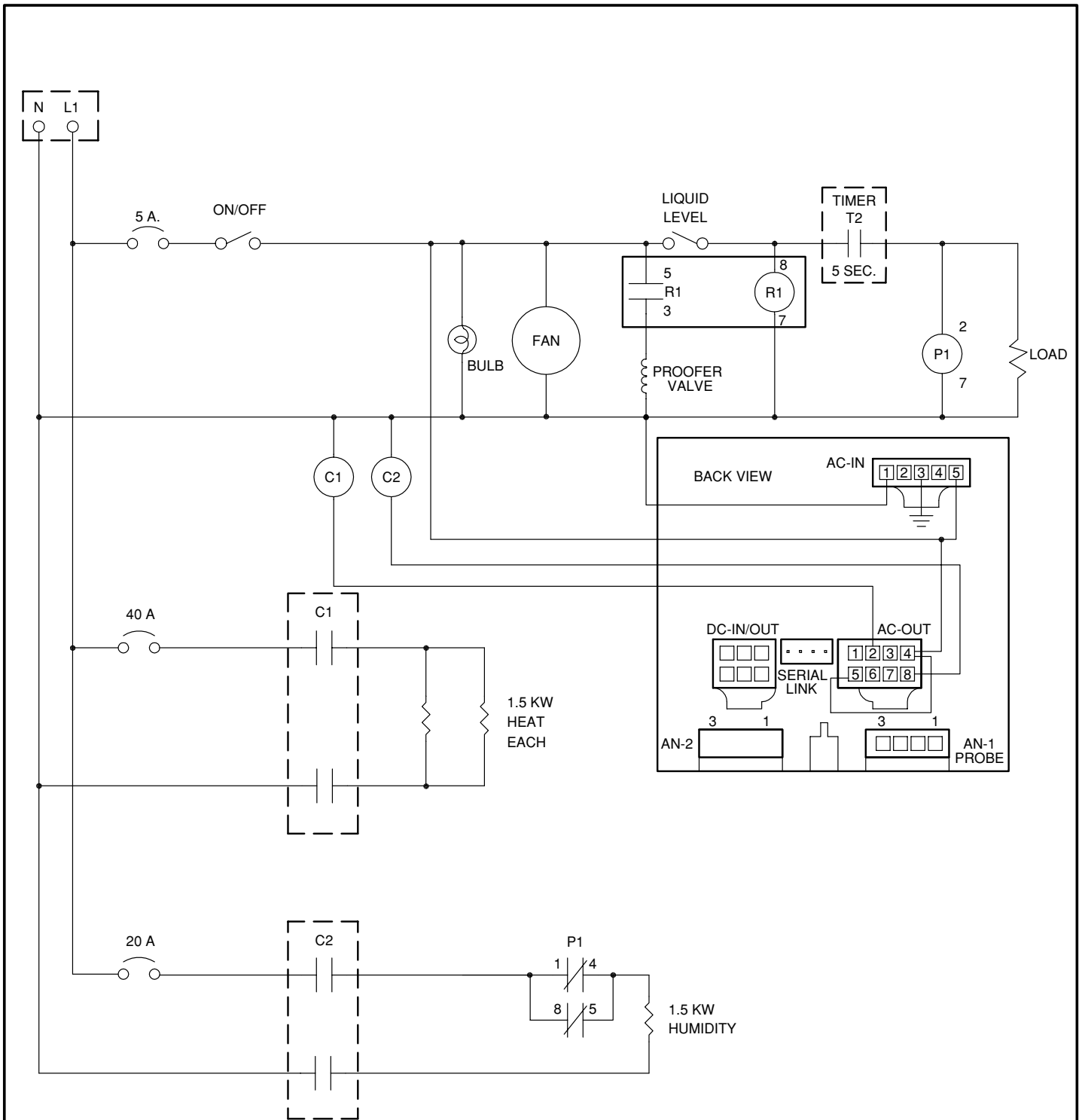
Item	Part Number	Description	Quantity
1	ELM763	MOTOR BLOWER 120V 265 CFM	1
2	ELE168	IMMERSION ELEMENT 240V 3000W	1
OR	ELE169	IMMERSION ELEMENT 208V 3000W	1
3	ELE132	COIL ELEMENT 240V 1500W	1
OR	ELE131	COIL ELEMENT 208V 1500W	1
4	ELE134	COIL ELEMENT 240V 4000W	1
OR	ELE133	COIL ELEMENT 208V 4000W	1
5	QUF350	ELECTRIC FLOAT	1
6	ELS880	SOLENOID VALVE 110/120V 50/60Hz	1
7	PLF100	WATER FILTER	1
8	ELV590	NEEDLE VALVE	1
9	ELL050	GROUND LUG	1
10	ELB072	TERMINAL BLOCK 3P 175A	1
11	ELC615	RELAY 10A 2P COIL 110V	1
AND	ELC617	BASE	1
12	ELB081	20A DOUBLE BREAKER	1
13	ELB084	40A DOUBLE BREAKER	1
14	ELC908	HEATING CONTACTOR	1
15	ELM735	SOLID STATE TIMER ICM	1
16	ELT728	XFO 120>240V A 120>240V 500 VA 50 HZ(MODEL 220V 50Hz ONLY)	1
17	ELC908	HEATING CONTACTOR	1
18	ELC640	CONTROL RELAY BASE	1
AND	ELC630	CONTROL RELAY 12A COIL 120V	1

Model : E460

View : TOP

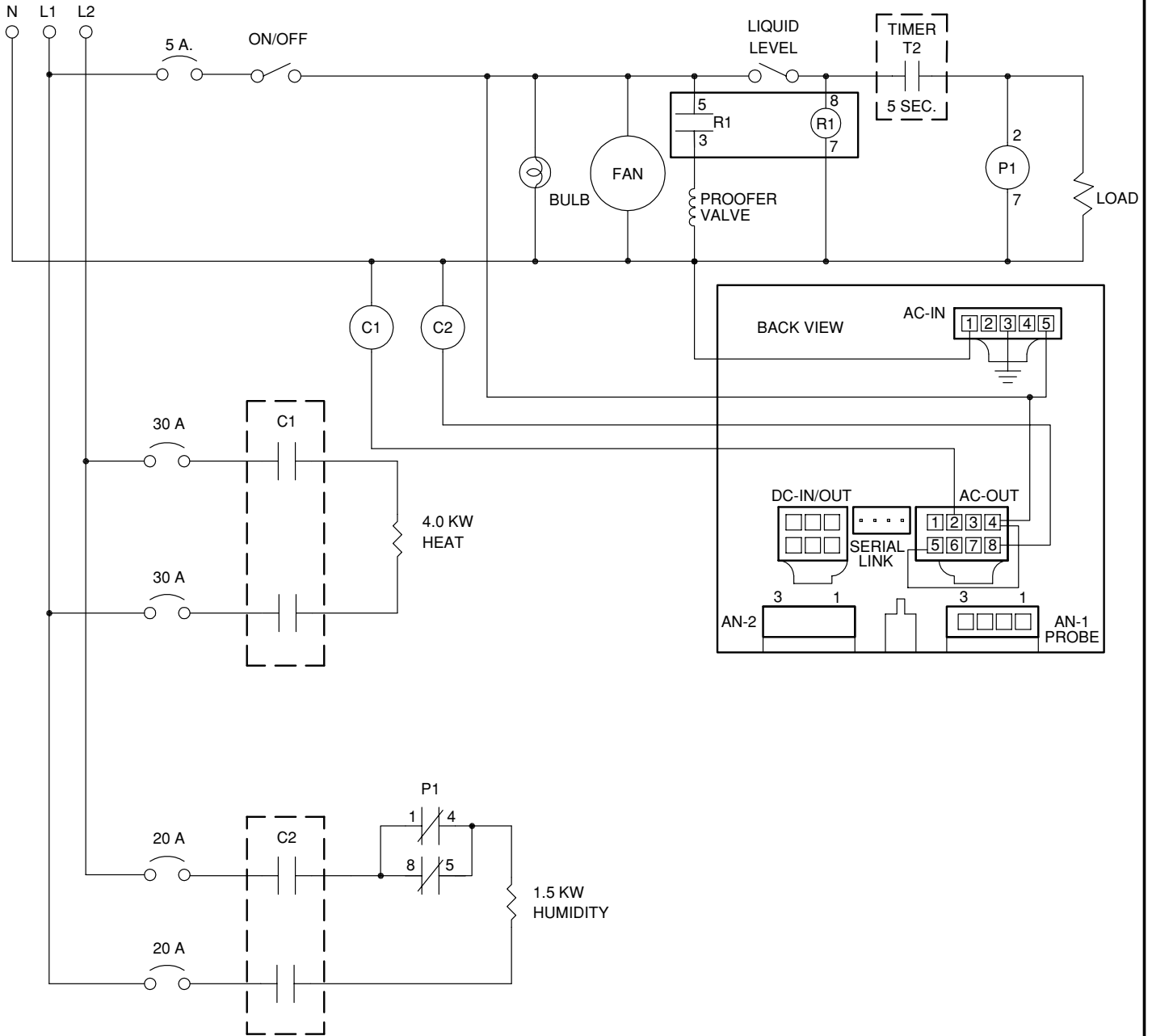
SECTION
G

ELECTRIC SCHEMATICS



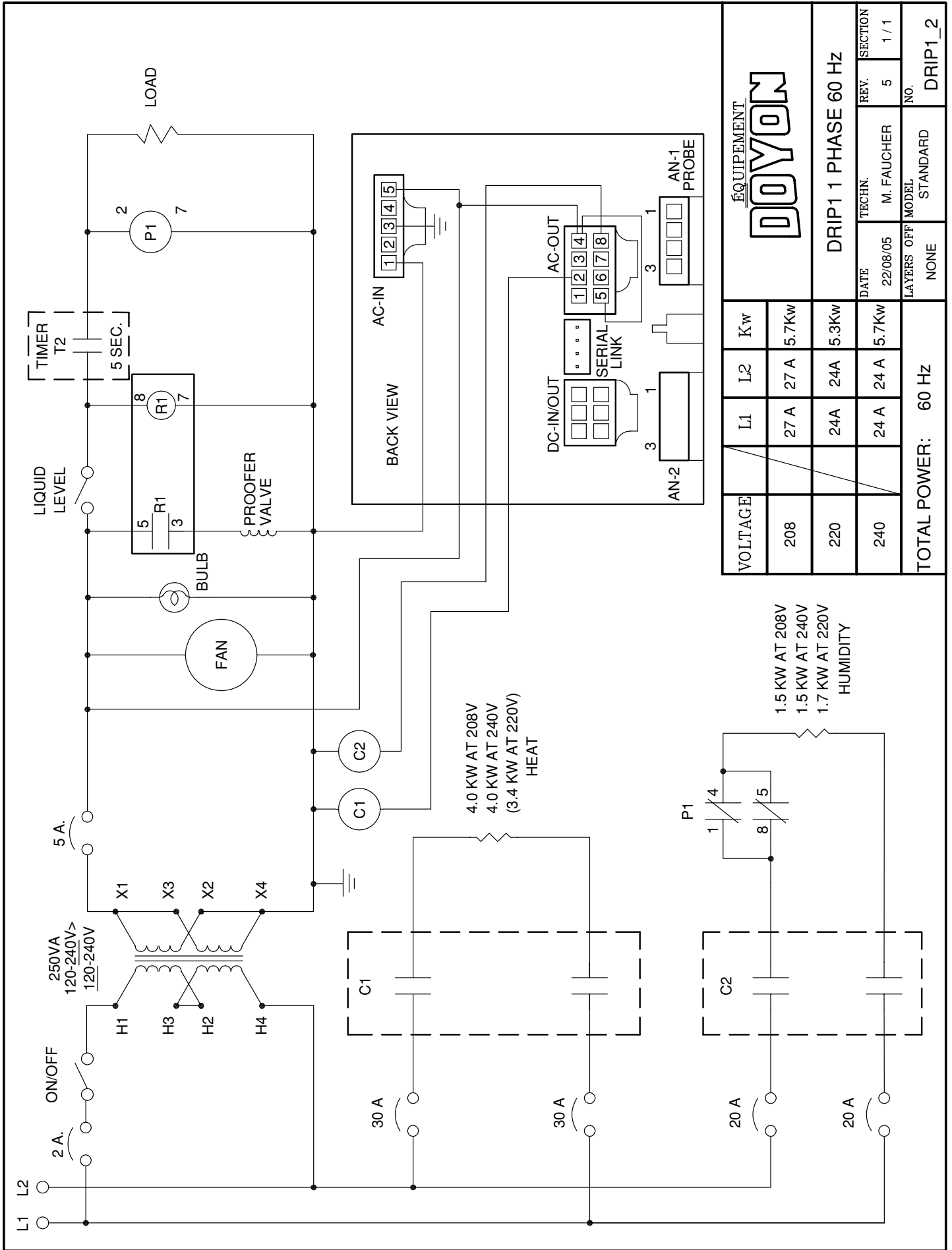
EQUIPEMENT
DOYON

VOLTAGE	N	L1			DRIP1 120V 1 PHASE 60 Hz			
120	39A	39A	/	/	DATE	TECHN.	REV.	SECTION
TOTAL POWER: 4.7 Kw 60 Hz					22/08/05	M. FAUCHER	8	1 / 1
					LAYERS OFF	MODEL	NO.	
					NONE	STANDARD	DRIP1	



VOLTAGE	N	L1	L2
120 / 208	1.25A	28A	26A
120 / 240	1.25A	24 A	23 A
TOTAL POWER: 5.7 Kw 60 Hz			

ÉQUIPEMENT			
DOYON			
DRIP1 1 PHASE 60 Hz			
DATE	TECHN.	REV.	SECTION
22/08/05	M. FAUCHER	1	1 / 1
LAYERS OFF	MODEL	NO.	
NONE	STANDARD	DRIP1_0	



EQUIPEMENT
DOYON

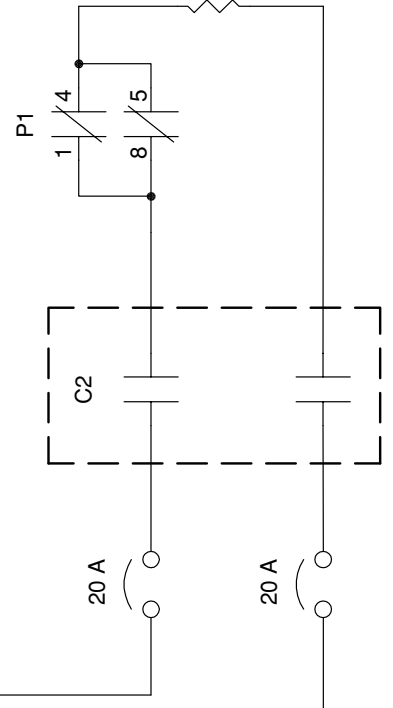
VOLTAGE	L1	L2	Kw
208	27 A	27 A	5.7Kw
220	24A	24A	5.3Kw
240	24 A	24 A	5.7Kw
TOTAL POWER: 60 Hz			

DATE	TECHN.	REV.	SECTION
22/08/05	M. FAUCHER	5	1 / 1

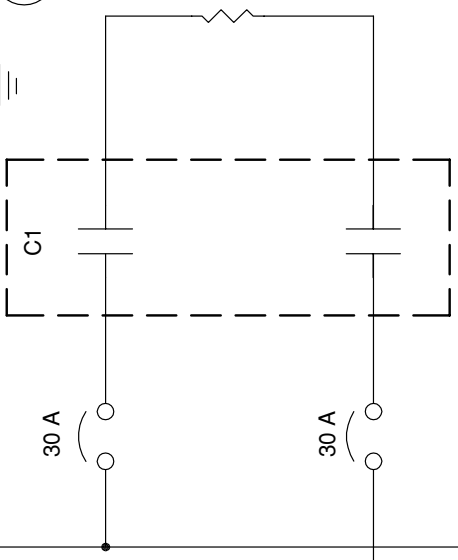
LAYERS OFF MODEL	STANDARD	NO.
NONE	STANDARD	DRIP1_2

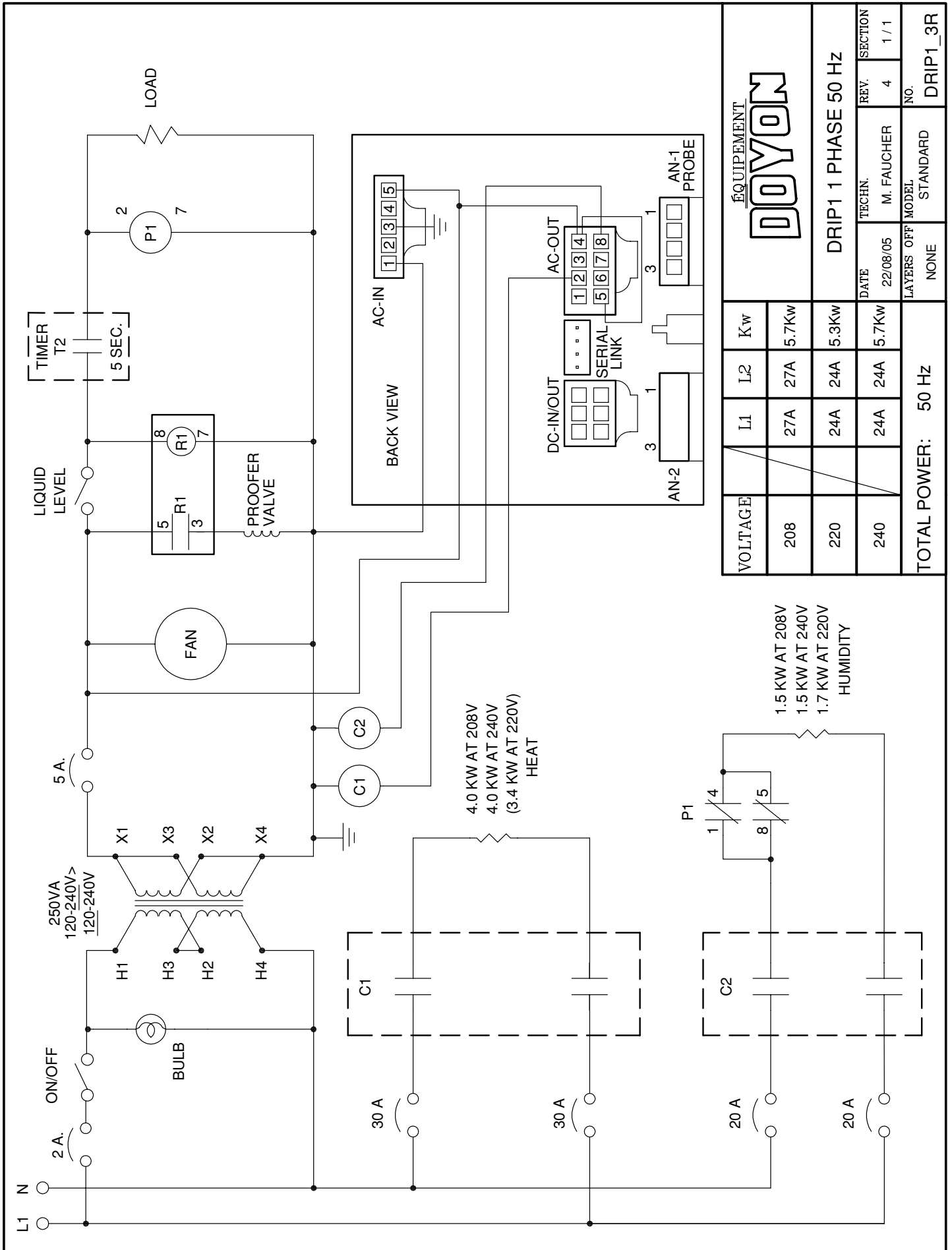
DRIP1 1 PHASE 60 Hz

1.5 KW AT 208V
1.5 KW AT 240V
1.7 KW AT 220V
HUMIDITY



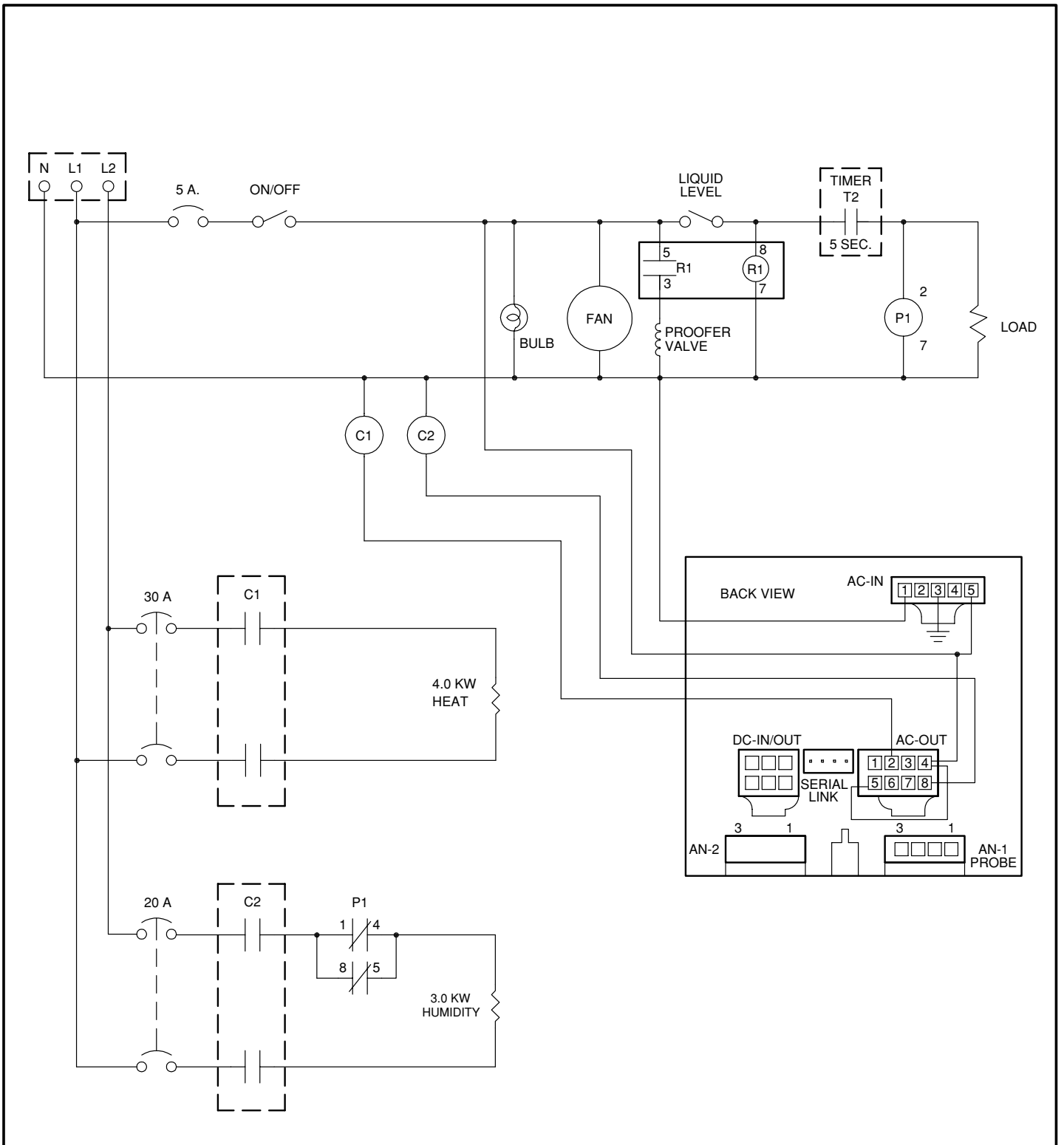
4.0 KW AT 208V
4.0 KW AT 240V
(3.4 KW AT 220V)
HEAT





1.5 KW AT 208V
1.5 KW AT 240V
1.7 KW AT 220V
HUMIDITY

4.0 KW AT 208V
4.0 KW AT 240V
(3.4 KW AT 220V)
HEAT



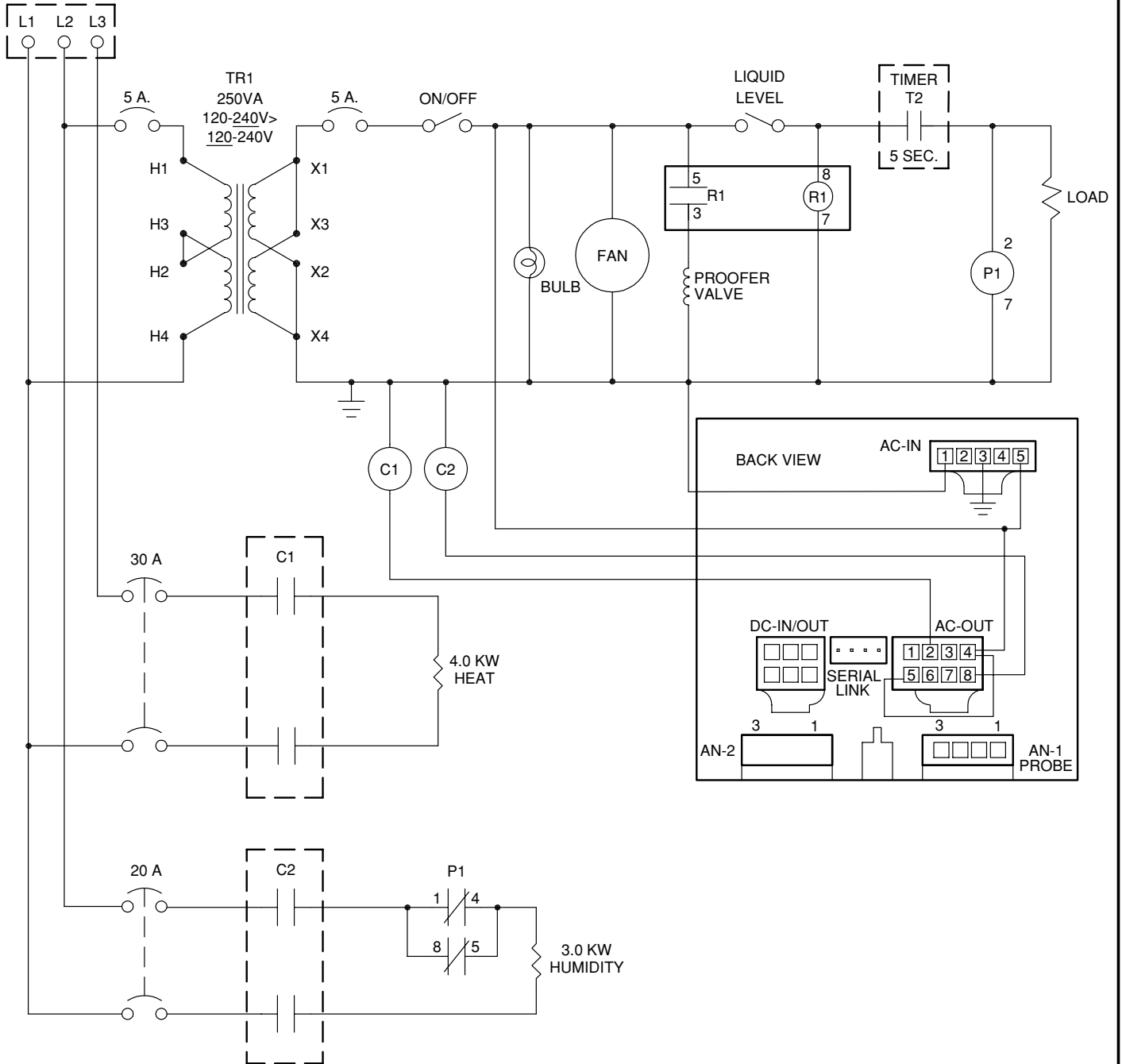
VOLTAGE	N	L1	L2
120 / 208	1.6A	35A	34A
120 / 240	1.6A	31A	29A
TOTAL POWER: 7.2 Kw 60 Hz			

ÉQUIPEMENT

DOYON

E236 1 PHASE 60 Hz

DATE	TECHN.	REV.	SECTION
22/08/05	M. FAUCHER	6	1 / 1
LAYERS OFF	MODEL	NO.	
NONE	STANDARD	E236_1	



WARNING

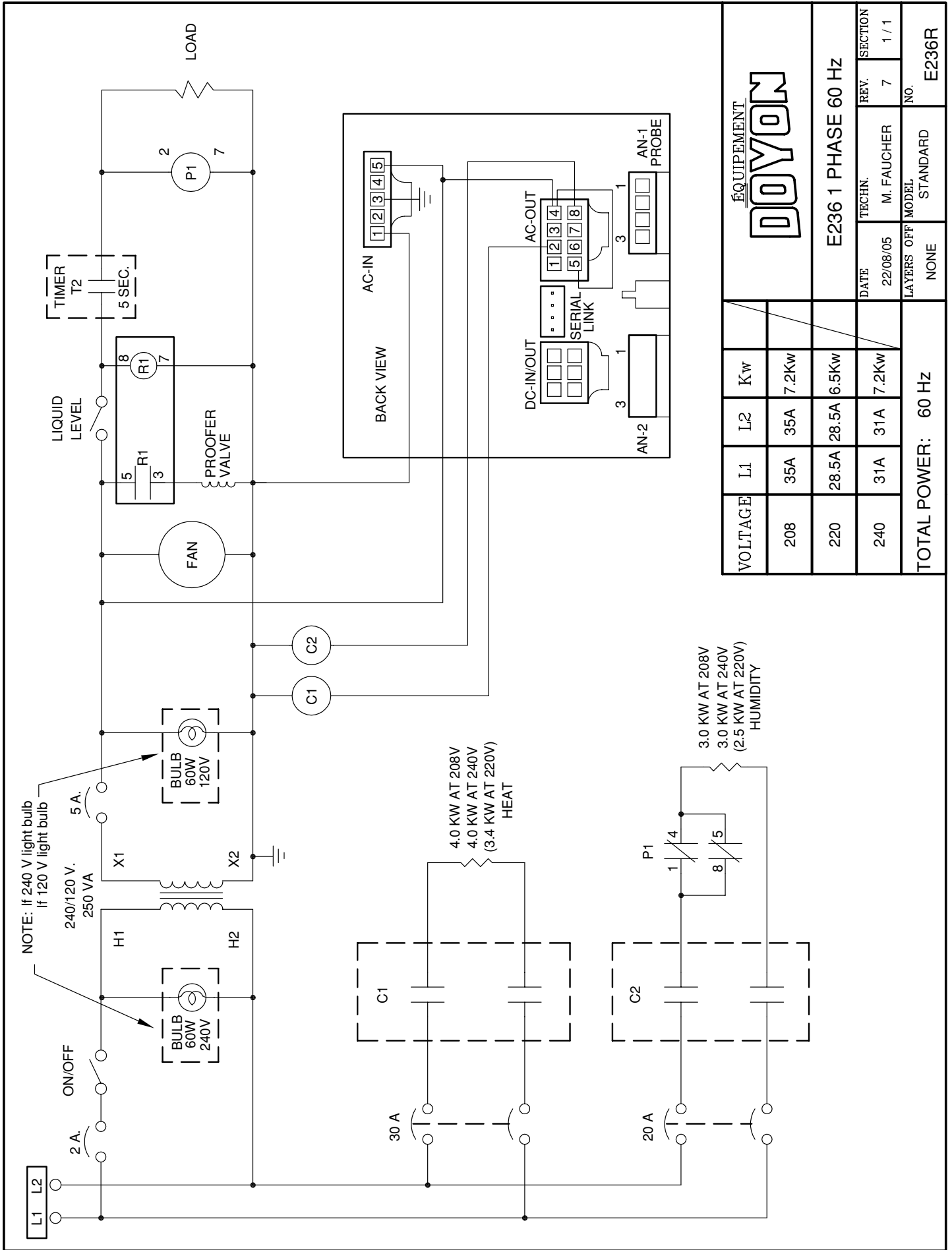
FOR SUPPLY SYSTEMS CONSISTING OF A DELTA SECONDARY TRANSFORMER, MAKE SURE THAT THE PHASE FEEDER WITH THE HIGHEST VOLTAGE (HIGH LEG) IS CONNECTED TO L3 IN THE SUPPLY BOX OF THIS OVEN (120 / 240V. 3 PH. SYSTEMS).

VOLTAGE	L1	L2	L3
208	31A	17A	20A
240	27A	15A	18A
TOTAL POWER: 7.2 Kw 60 Hz			

ÉQUIPEMENT
DOYON

E236 3 PHASE 60 Hz

DATE	TECHN.	REV.	SECTION
22/08/05	M. FAUCHER	5	1 / 1
LAYERS OFF	MODEL	NO.	
NONE	STANDARD	E236_208	



ÉQUIPEMENT
DOYON

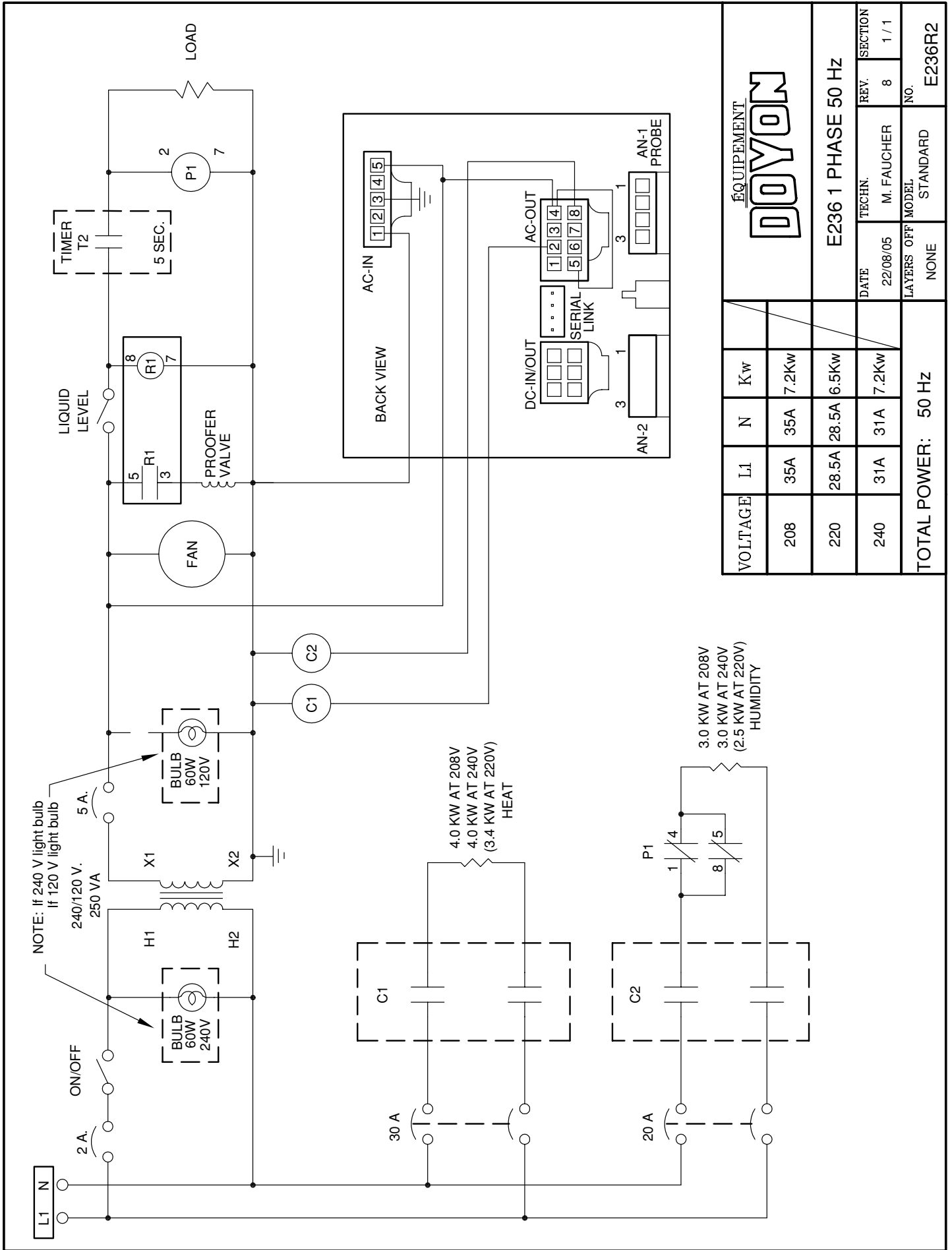
E236 1 PHASE 60 Hz

VOLTAGE	L1	L2	Kw
208	35A	35A	7.2Kw
220	28.5A	28.5A	6.5Kw
240	31A	31A	7.2Kw

TOTAL POWER: 60 HZ

DATE	TECHN.	REV.	SECTION
22/08/05	M. FAUCHER	7	1 / 1

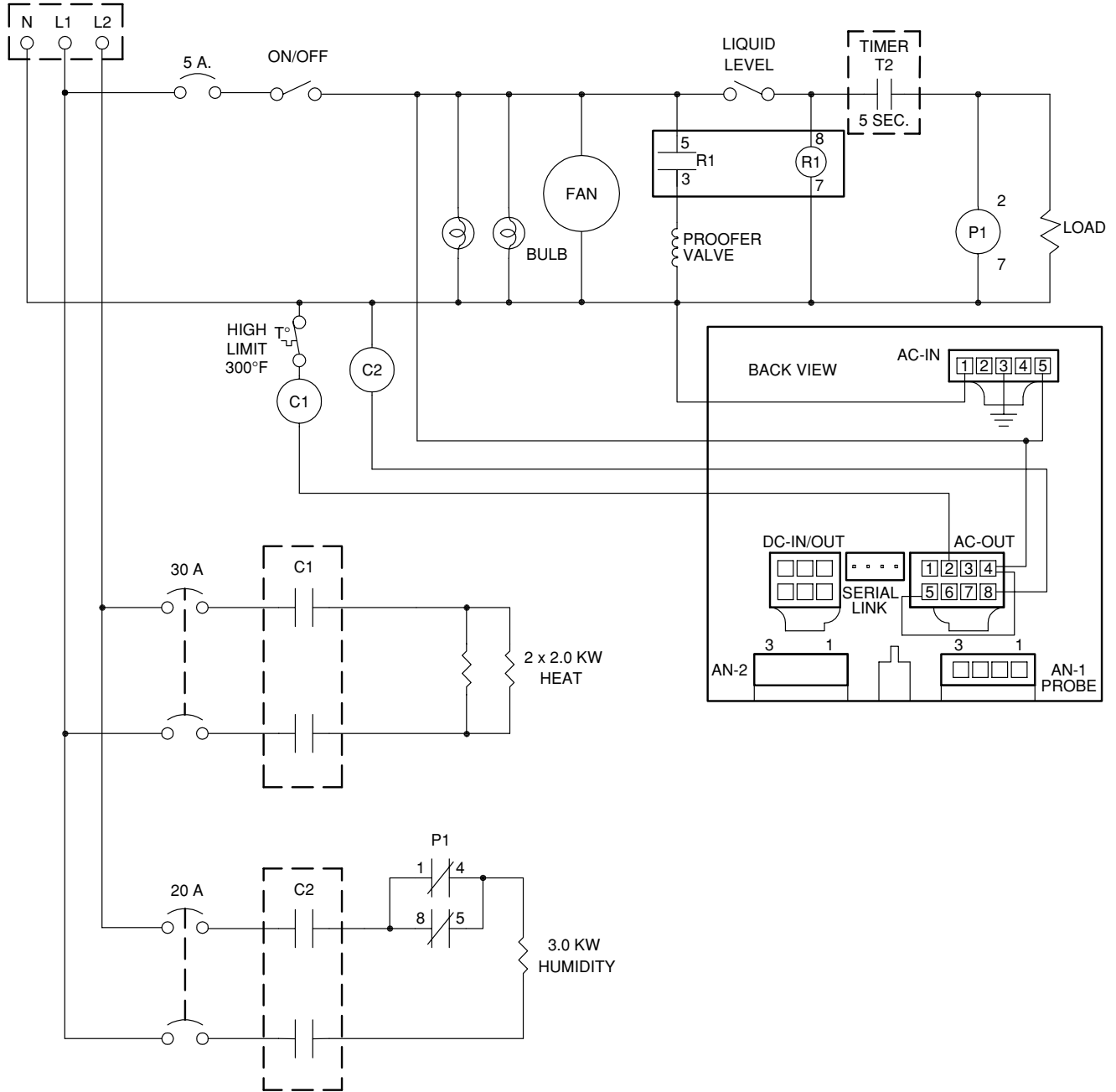
LAYERS OFF MODEL	STANDARD	NO.
NONE	STANDARD	E236R



ÉQUIPEMENT
DOYON

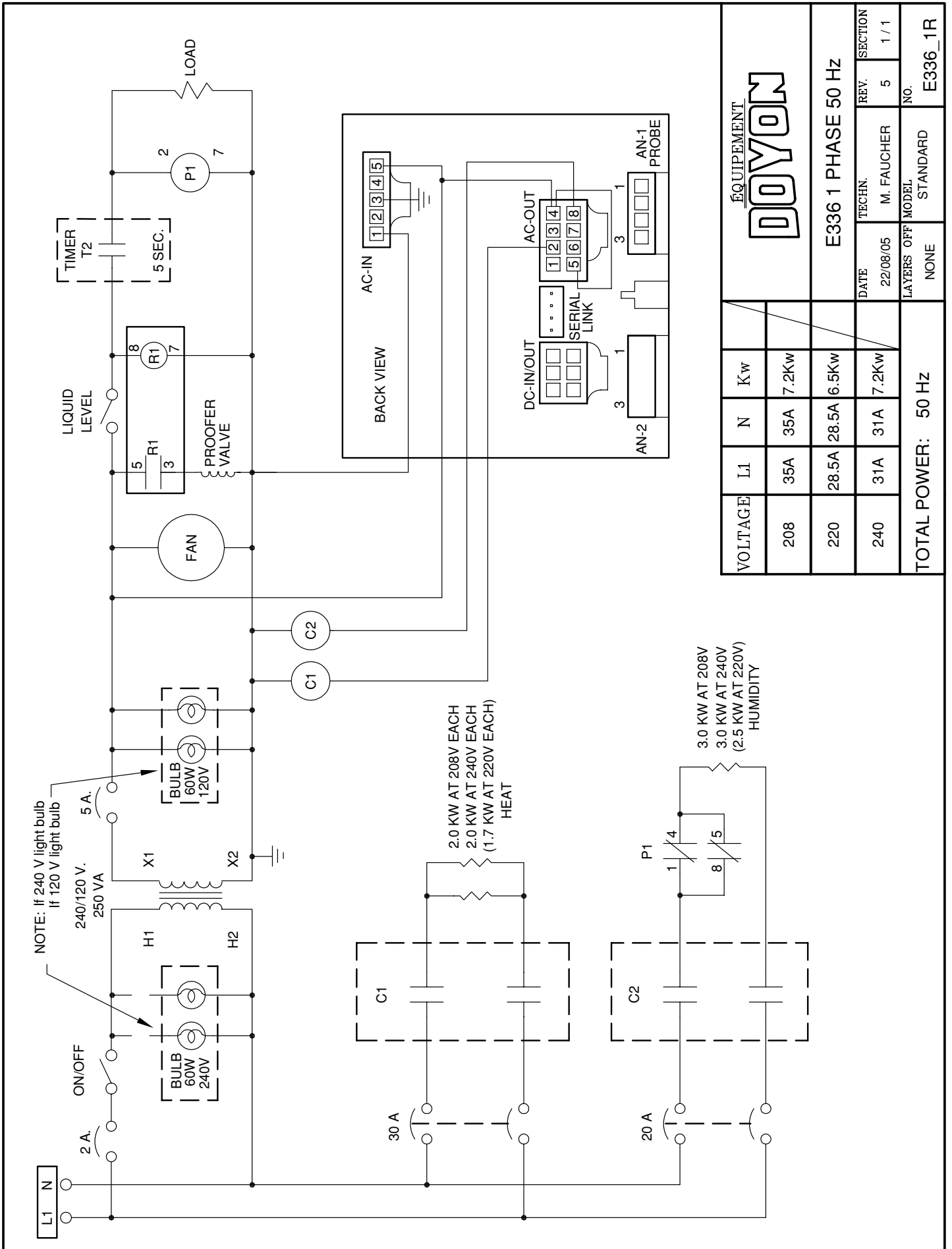
E236 1 PHASE 50 Hz

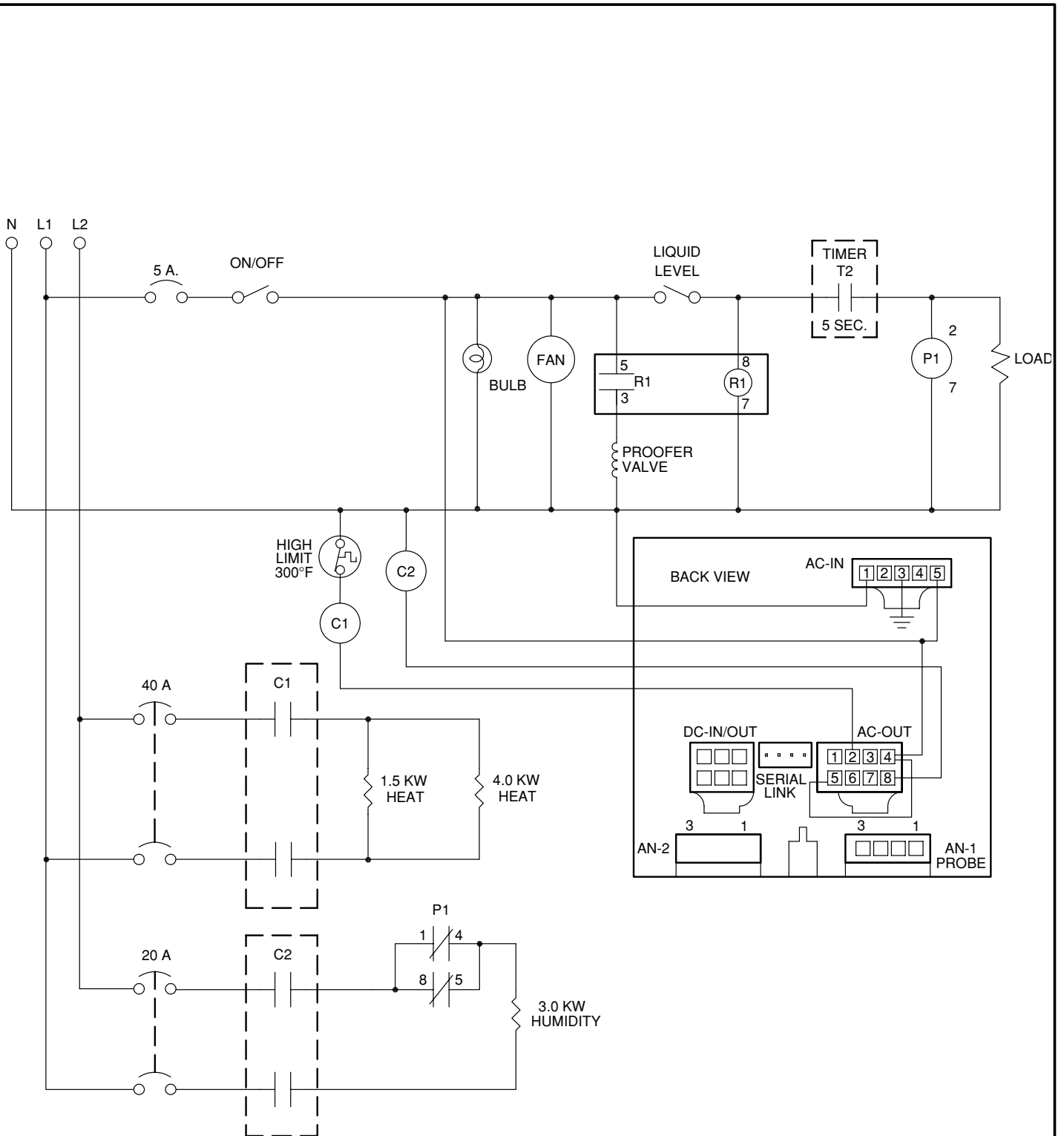
VOLTAGE	L1	N	Kw	DATE	TECHN.	REV.	SECTION
208	35A	35A	7.2Kw	22/08/05	M. FAUCHER	8	1 / 1
220	28.5A	28.5A	6.5Kw				
240	31A	31A	7.2Kw				
TOTAL POWER: 50 Hz				LAYERS OFF MODEL	STANDARD	NO.	E236R2



VOLTAGE	N	L1	L2
120 / 208	2.5A	34.6A	32.6A
120 / 240	2.5A	31.0A	29.0A
TOTAL POWER: 7.5 Kw 60 Hz			

ÉQUIPEMENT			
DOYON			
E336 1 PHASE 60 Hz			
DATE	TECHN.	REV.	SECTION
22/08/05	M. FAUCHER	6	1 / 1
LAYERS OFF	MODEL	NO.	
NONE	STANDARD	E336_1	



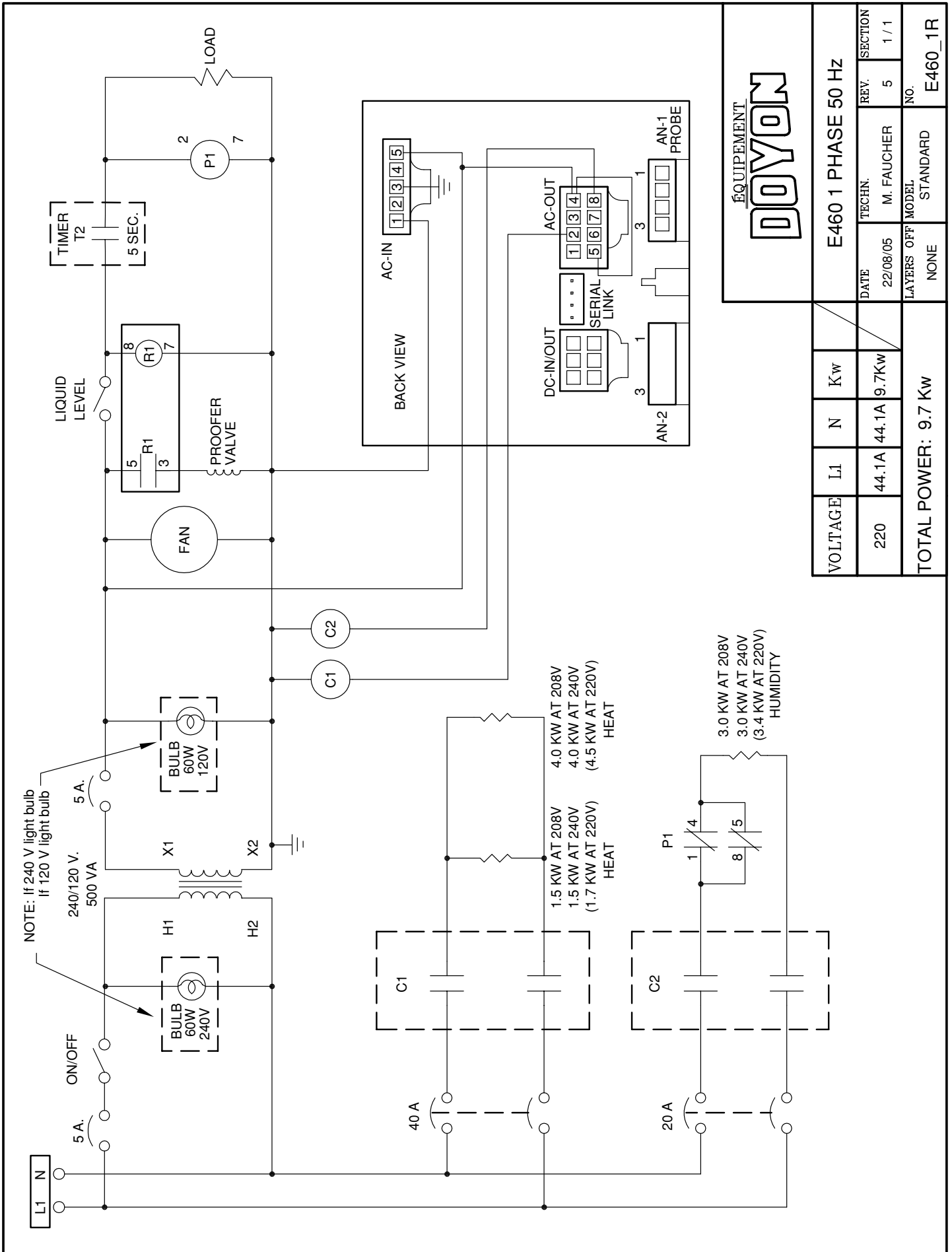


VOLTAGE	N	L1	L2
120 / 208	2.5A	41.0A	40.0A
120 / 240	2.5A	36.0A	35.0A
TOTAL POWER: 8.5 Kw 60 Hz			

EQUIPEMENT
DOYON

E460 1 PHASE 60 Hz

DATE	TECHN.	REV.	SECTION
22/08/05	M. FAUCHER	7	1 / 1
LAYERS OFF	MODEL	NO.	
NONE	STANDARD	E460_1	



E460 1 PHASE 50 Hz		REV.	SECTION
DATE	TECHN.	REV.	SECTION
22/08/05	M. FAUCHER	5	1 / 1
LAYERS OFF	MODEL	NO.	
NONE	STANDARD	E460_1R	
TOTAL POWER: 9.7 Kw			

LIMITED WARRANTY

(Continental United States Of America And Canada Only)

Doyon Equipment Inc. guarantees to the original purchaser only that its product are free of defects in material and workmanship, under normal use.

This warranty does not cover any light bulbs, thermostat calibration or defects due to or resulting from handling, abuse, misuse, nor shall it extend to any unit from which the serial number has been removed or altered, or modifications made by unauthorized service personnel or damage by flood, fire or other acts of God. Nor will this warranty apply as regards to the immersion element damaged by hard water.

The extent of the manufacturer's obligation under this warranty shall be limited to the replacement or repair of defective parts within the warranty period. The decision of the acceptance of the warranty will be made by Doyon Equipment service department, which decision will be final.

The purchaser is responsible for having the equipment properly installed, operated under normal conditions with proper supervision and to perform periodic preventive maintenance.

If any parts are proven defective during the period of one year from date of purchase, Doyon Equipment Inc. hereby guarantees to replace, without charge, F.O.B. Linière, Quebec, Canada, such part or parts.

Doyon Equipment Inc will pay the reasonable labor charges in connection with the replacement parts occurring within one year from purchase date. Travel over 50 miles, holiday or overtime charges are not covered. After one year from purchase date, all labor and transportation charges in connection with replacement parts will be the purchaser's responsibility.

Doyon Equipment Inc. does hereby exclude and shall not be liable to purchaser for any consequential or incidental damages including, but not limited to, damages to property, damages for loss of use, loss of time, loss of profits or income, resulting from any breach or warranty.

In no case, shall this warranty apply outside Canada and continental United States unless the purchaser has a written agreement from Doyon Equipment Inc.