

# JA-3, JA3MC, JA3MC3

**IMPORTANT SAFETY INSTRUCTIONS  
SAVE THESE INSTRUCTIONS**

**DANGER  
TO REDUCE THE RISK OF FIRE OR ELECTRIC SHOCK,  
CAREFULLY FOLLOW THESE INSTRUCTIONS**

## TABLE OF CONTENTS

<u>DESCRIPTION</u>	<u>PAGE</u>
Installation and maintenance manual . . . . .	A1
Construction . . . . .	A2
Shipping . . . . .	A2
Warnings . . . . .	A3
Distances to respect & installation. . . . .	A4
Operation / instruction for oven . . . . .	A6
Before calling for service - Answers to most frequent questions . . . . .	A8
Oven maintenance and cleaning . . . . .	A10
For more information, please call our office: . . . . .	A11
SECTION « B » DIMENSIONS	
JA-3 . . . . .	B1
JA3MC et JA3MC3 . . . . .	B4
SECTION « E » COMPONENT PARTS	
JA-3 . . . . .	E1
JA3MC et JA3MC3. . . . .	E4
SECTION « G » ELECTRIC SCHEMATIC	
JA-3 120V/208V/1PH & 120V/240V/1PH (5000 WATTS). . . . .	G1
JA-3 220V/1PH/50HZ (5000 WATTS) . . . . .	G2
JA3MC 120V/1PH (2000 WATTS). . . . .	G3
JA3MC 120/208V/1PH (2000 WATTS) . . . . .	G4
JA3MC 120/240V/1PH (2000 WATTS) . . . . .	G5
JA3MC 220V/1PH/50HZ (2000 WATTS) . . . . .	G6
JA3MC3 120/208V/1PH & 120/240V/1PH (3000 WATTS) . . . . .	G7
WARRANTY . . . . .	

## **INSTALLATION AND MAINTENANCE MANUAL**

The manufacturer suggests to read this manual carefully and to keep it for future reference.

This Jet Air oven is manufactured with first quality material by experienced technicians. Proper installation and maintenance will guarantee a reliable service for years to come.

A nameplate fixed to the front or the right side of the oven specifies the serial number, model number, number of phase, amperage, voltage and frequency.

Drawings, electrical diagram, and replacement part numbers are included in this manual. The electrical diagram is affixed in the control panel at the back of the oven.

### **WARNING**

**DOYON is not responsible for damages to the property or the equipment caused by personnel who is not certified by known organizations. The customer is responsible for finding qualified technicians in gas, electricity and plumbing for the installation of the oven.**

## **CONSTRUCTION**

You just bought the most advanced electric oven in the world, the "DOYON" technology at its best. This oven is manufactured using the highest quality components and material.

This oven gives a perfect uniform baking with its unique Jet Air convection system. The DOYON ovens are designed with parts that are easy to find.

## **SHIPPING**

For your safety, this equipment is verified by qualified technicians and carefully crated before shipment. The freight company assumes full responsibility concerning the delivery in good condition of the equipment in accepting to transport it.

## **IMPORTANT**

### **RECEPTION OF THE MERCHANDISE**

Make sure to verify that the received equipment is not damaged before signing the delivery receipt. If a damage or a lost part is noticed, write it clearly on the receipt. If it is noticed after carrier left, contact immediately the freight company in order that they do their inspection.

We do not assume the responsibility for damages or losses that may occur during transportation.

## **WARNINGS**

### **FOR YOUR SAFETY**

**DO NOT STORE OR USE GASOLINE OR OTHER FLAMMABLE VAPORS  
AND LIQUIDS IN THE VICINITY OF THIS OR ANY APPLIANCE**

### **POWER FAILURE WARNING**

**WHEN YOU HAVE A POWER FAILURE, SHUT OFF THE OVEN POWER SWITCH TO  
PROTECT THE ELECTRONIC COMPONENT WHEN THE POWER RETURNS.**

## **IMPORTANT**

### **INSTALLATION AND SERVICE**

Installation and service must be done by specialized technicians. Contact a certified electrician and plumber for set up.

The oven must be connected to the utility and electrically grounded in conformity to the effective local regulations. If these are not established, the oven must be connected according to the Canadian Electrical Code (CSA-C22.1- XX) or National Electrical Code (NFPA 70-XX). Refer to last edition year for XX.

**DISTANCES TO RESPECT**

- A) Back of the oven: 4 inches
- B) Top of the oven: a clearance of 36 inches to the ceiling must exist to allow adequate venting of hot parts.
- C) Floor: 4 inches minimum
- D) Sides of oven: Do not install other than easily removable equipment for service and maintenance (not closer than 4 inches).
- E) It is recommended to have a certain length (48") of electric cable between oven and wall to help gain access for service.

## **INSTALLATION**

### **IN GENERAL**

Take off the packaging material with care. Take off all the material used for packing and accessories.

#### **1. To the electrician.**

Electrical supply installation must be in accordance with the electrical rating on the nameplate.

### **WARNING**

**The electrician must make sure that the supply cable does not come in contact with the oven top which becomes hot.**

#### **2 To the plumber**

This equipment is to be installed to comply with the applicable federal, state, or local plumbing codes.

**Connect the steam system (1/4 NPT) to the cold water distribution network. We highly recommend a water softener to eliminate minerals in the water. We suggest to use CUNO # CFS6135 (Doyon part number PLF240).**

## **OPERATION**

1. Turn the switch to the " ON " position .

- The light of the oven must lite.

3 Adjust the thermostat at the desired setting.

4 Heat the unit until you reach the baking temperature

When the desired temperature is reached, the red light goes out and the green turns on.

If the light is still "ON" and the oven does not produce heat, call for service.

5 Load the oven as fast as possible to avoid letting out too much heat.

6 Set the timer to the desired value and start it. (see "TIMER" adjustment on next page).

**NOTE:** The timer does not shut the oven off at the end of its cycle. It simply activates the buzzer.

**7 Wait until the product is ready. Do not open the doors until the product is done.**

## **OVEN INSTRUCTIONS**

### **BAKING**

350°F (Croissants, Sweet Doughs, Small rolls)

375°F (Baguette bread, round loaf, 16 oz. bread and more)

375°F (If the oven is filled to its capacity)

### **DOORS OPENING**

Open the doors as little as possible. This will affect the baking.

### **TIMER**

The oven is provided with a portable digital timer. The timer can also be installed on the bracket located under the main switch.

### **POWER FAILURE**

When the power comes back the oven will start automatically. It is recommended to turn off the oven to avoid that it starts without supervision.

## Before calling for service

### Answers to most frequent questions

Always cut off the main power before replacing any parts. Take care of water piping and electric cable when pulling the oven.

**Control parts on the front:**

Remove the front or side panel by removing the screws.

**Control and motor system on the back of oven:**

Remove the back panel by removing the screws.

**OVEN**

<b>Questions</b>	<b>Solutions</b>
<b>The oven does not turn on when installed.</b>	Check the breakers on the front panel. Check the breaker of the building.
<b>The blower does not run and the oven does not produce heat (lights are on).</b>	If the oven has already functioned, check if the doors are tightly closed. Check the overload relays located in the control compartment. If anyone of these is disengaged, call for a qualified technician.
<b>Uneven baking</b>	Make sure that the grills do not obstruct the airflow. Do not use foil on grills. The oven temperature is too high. For best result, cooking temperature should be around 350 <sup>0</sup> F to 375 <sup>0</sup> F. To put in or take out bread pans, open the door 2"(5 cm) and wait 5 secondes before opening the door completely. Check the oven temperature by using an oven thermometer and make sure that it is even to the thermostat setting. Check if the baking time is longer than usual and if the oven is baking much more on the bottom. If it is the case, one element may be burned. If the oven is baking too much on the sides, it is possible that the fan is not cycling properly. (Check if the motor turns 2.5 minutes in a direction, stops 30 seconds and starts for 2.5 minutes in the opposite direction). The doors should not be opened unnecessarily to conserve the heat. Find out leak of heat and correct it.

<b>The steam works in the oven but the light inside the steam button does not lite.</b>	Replace the light bulb inside the push button.
<b>If steam device does not work properly.</b>	<p>The oven must have been heating for at least half an hour before you use steam system. If not, water will appear at the bottom of the oven. Check if the water supply valve (of the building) is open.</p> <p>Check if the water needle valve (of the oven) is open one-eighth of a turn. Just close it and open it one-eighth of a turn, maximum.</p> <p>Check the solenoid valve.</p> <p>Check the preset steam timer in the back control box.</p> <p>Be sure to inject steam while the fan is running. The steam button light should lite during the steam injection.</p>

## Oven maintenance and cleaning

### MAINTENANCE OF THE OVEN

- It is recommended to use a water filter and to clean or replace it regularly to avoid accumulation of minerals inside the unit.
- Once a year or as needed, clean the small float switch reservoir of the proofer (see parts description for localisation).

### CLEANING

<b>Step by step</b>	<b>Recommendations</b>
<b>Clean the inside of the oven with water and soap.</b>	We recommend and sell: Dirt Buster III : Action foam cleaner. CHEMCO Part number : NEB201 <b>Warning: Never use cleaners such as Easy-Off or equivalents in the oven.</b>
<b>After cleaning the inside of the oven, apply a silicone base oven protector. It avoids food from sticking to the metal.</b>	We recommend and sell: 316 Silicone base protector and lubricant for oven Dow Corning Part number : EXS400
<b>Clean the oven windows with products like Brasso or equivalents. They are copper cleaners but good for this use.</b>	We recommend and sell: Wright's: Cream copper cleaner J.A. Wright & Co. Part number : EXC300
<b>Clean the oven exterior with a stainless steel polish.</b>	We recommend and sell: Stainless steel cleaner. SANY or CURTIS (commestible) Part number : NES201

**For more information, please contact our office :**

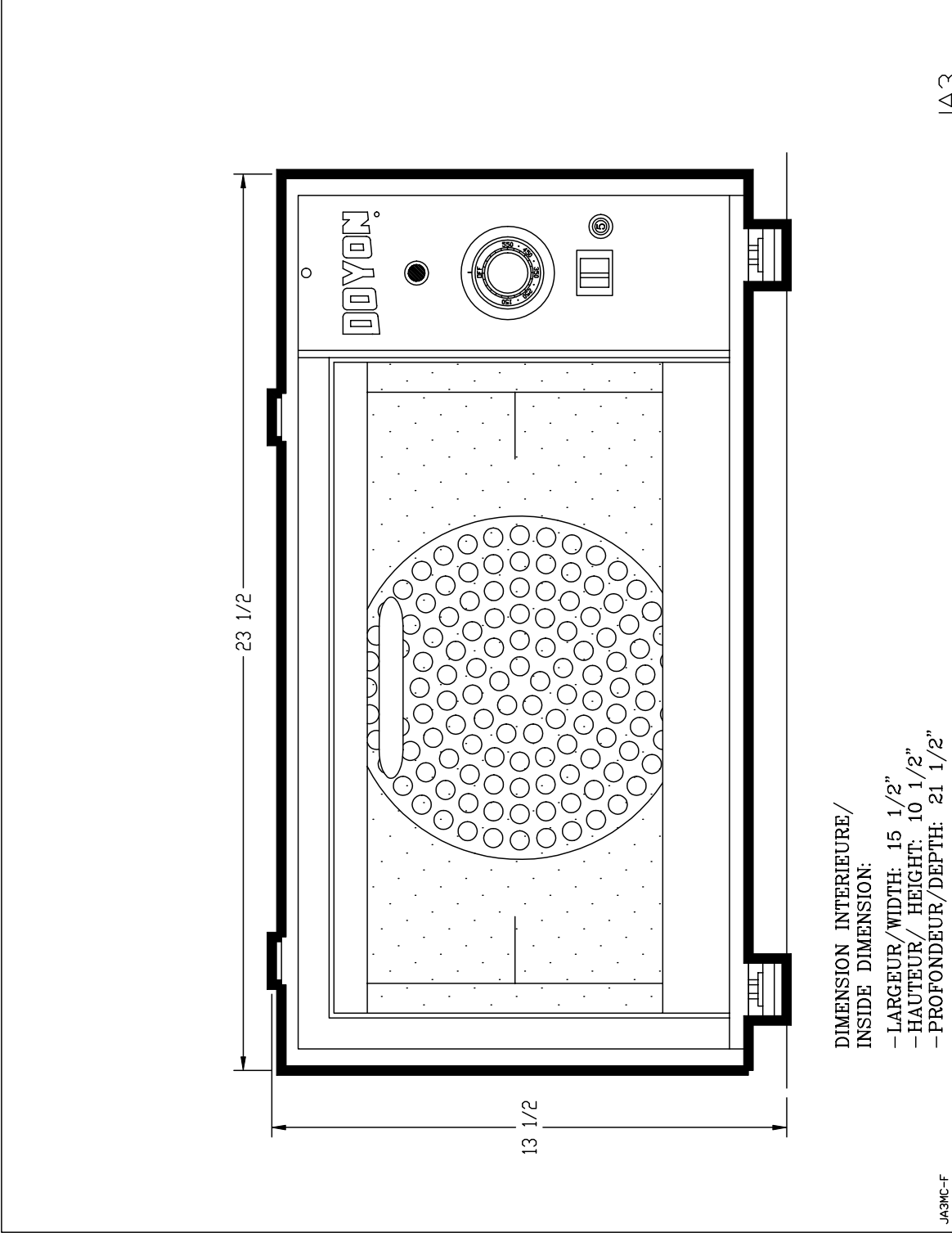
**DOYON EQUIPMENT INC.**  
1255, rue Principale  
Linière, Qc, Canada G0M 1J0

**Tel. : 1 (418) 685-3431**  
**Canada : 1 (800) 463-1636**  
**U.S. : 1 (800) 463-4273**  
**FAX : 1 (418) 685-3948**

Internet: [www.doyon.qc.ca](http://www.doyon.qc.ca)  
E-Mail : [doyon@doyon.qc.ca](mailto:doyon@doyon.qc.ca)

SECTION  
B

**DIMENSIONS**

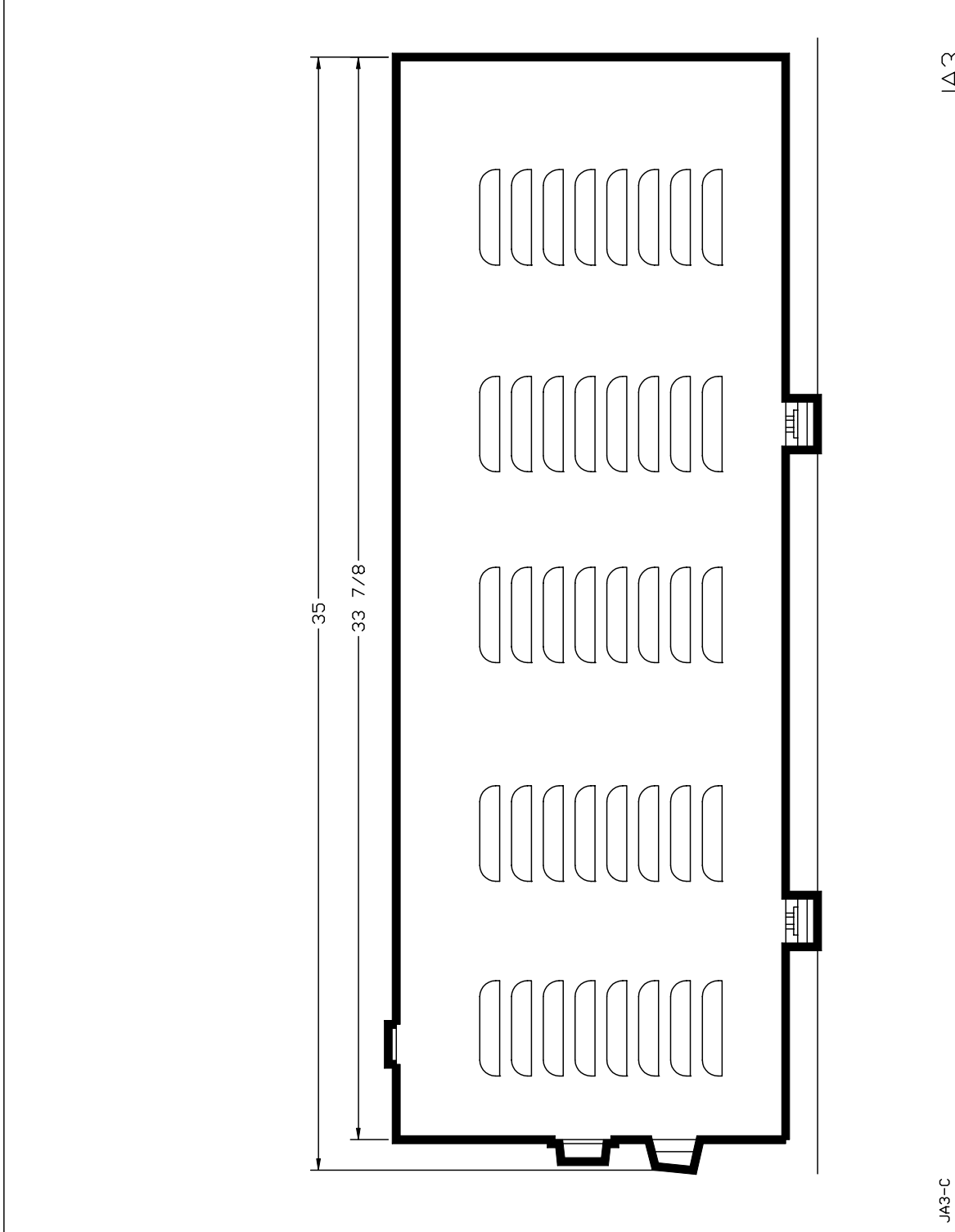


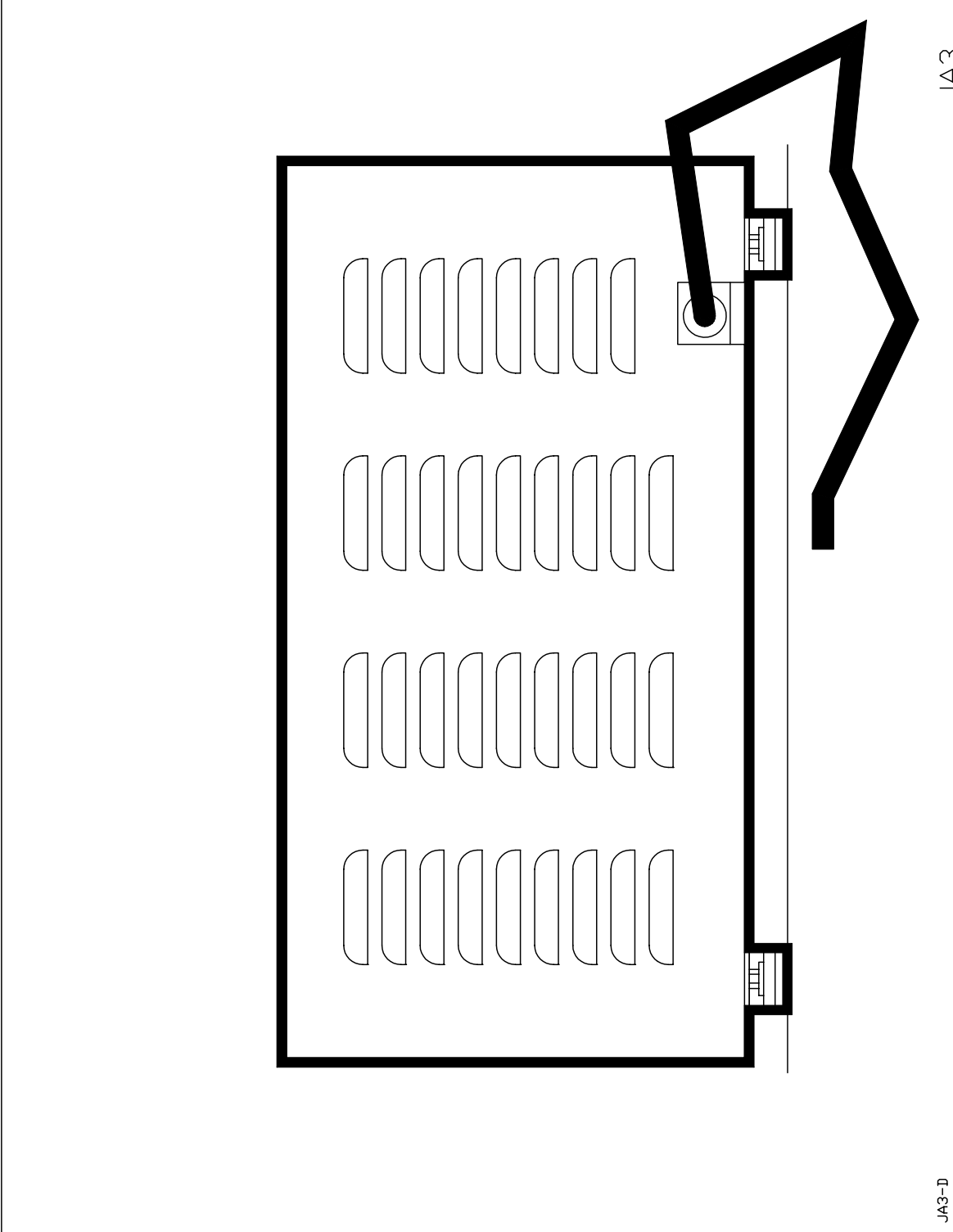
DIMENSION INTERIEURE /  
INSIDE DIMENSION:  
- LARGEUR / WIDTH: 15 1/2"  
- HAUTEUR / HEIGHT: 10 1/2"  
- PROFONDEUR / DEPTH: 21 1/2"

JA3MC-F

JA3

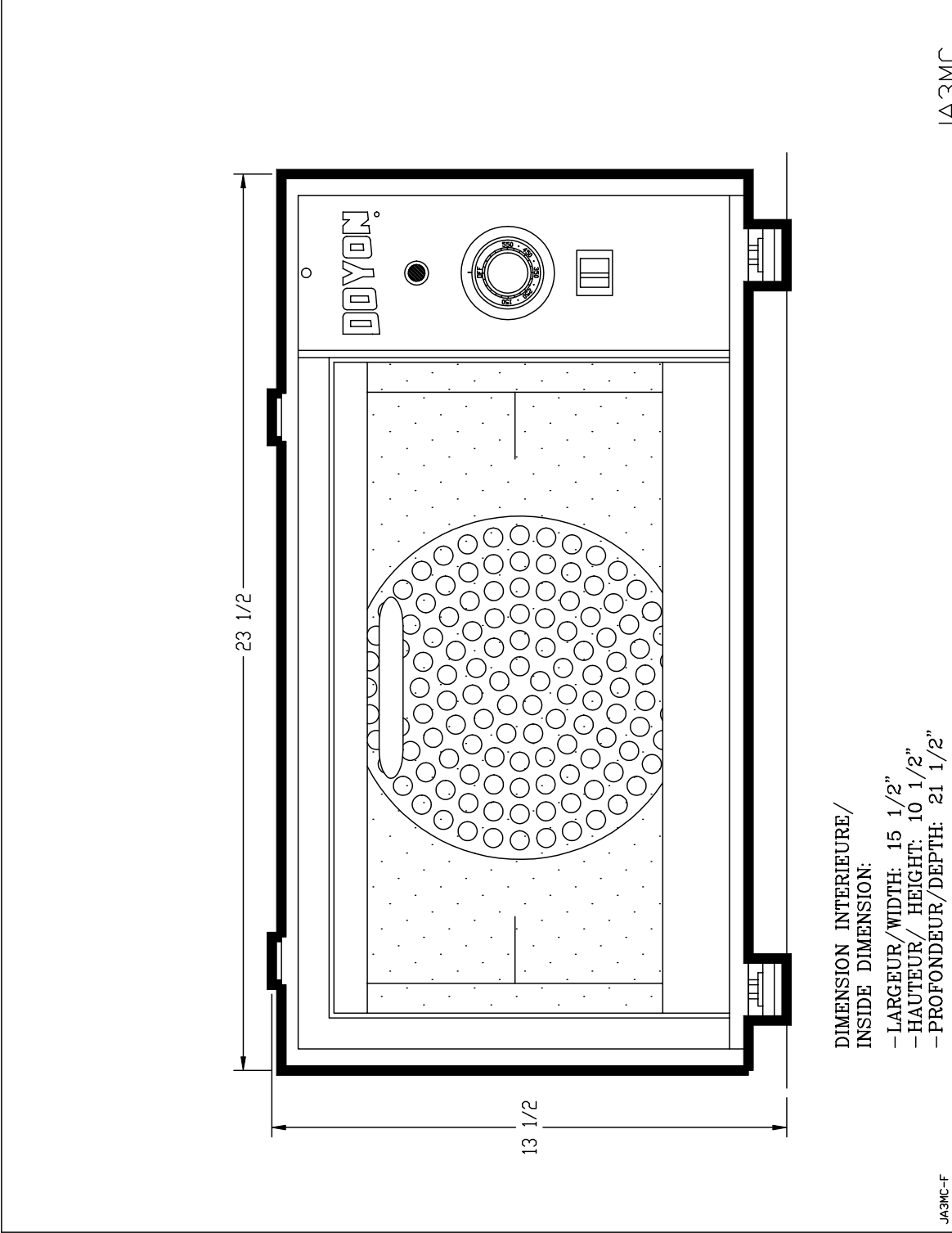
B2

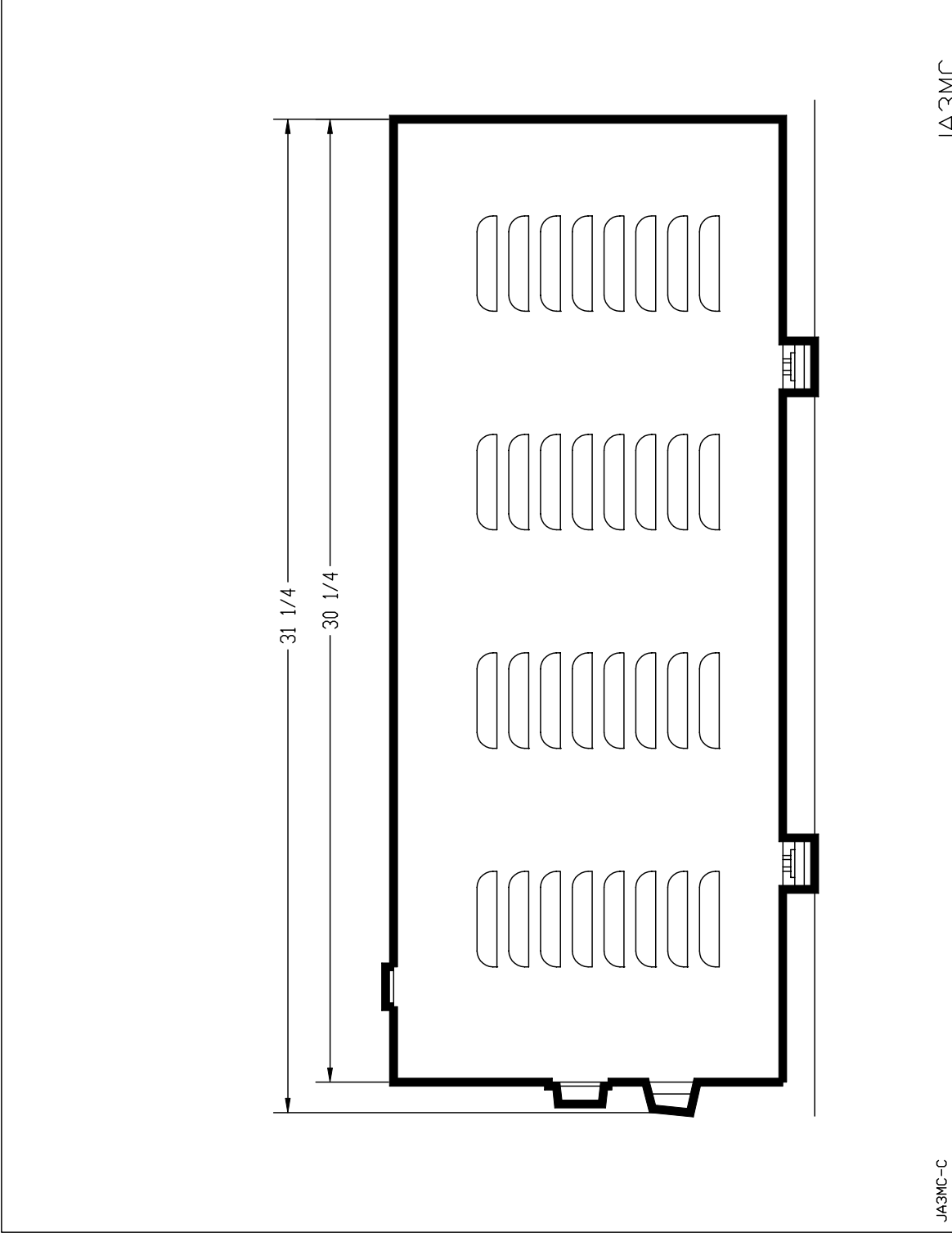




JA3

JA3-D



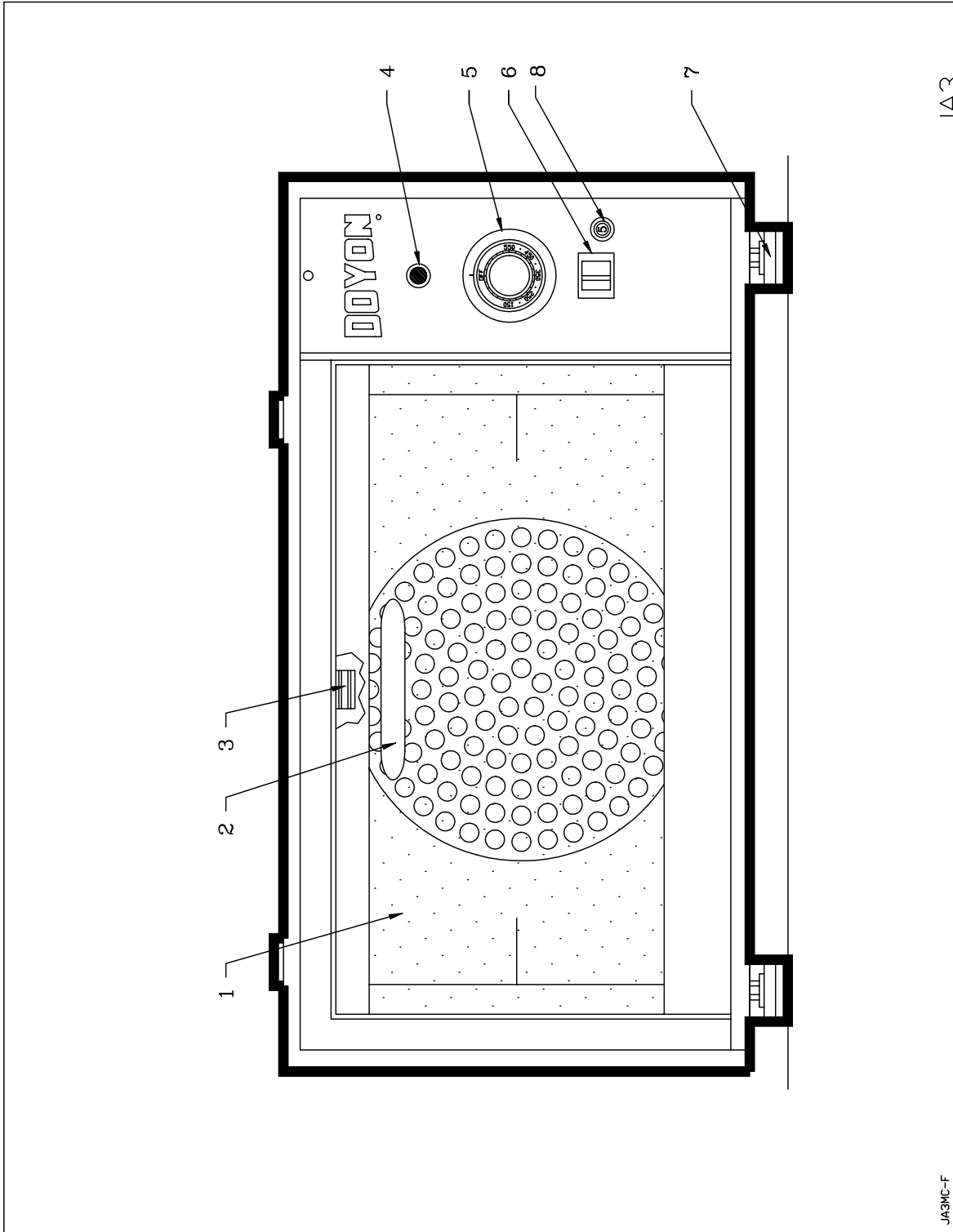




SECTION  
E

**COMPONENT PARTS**

E1



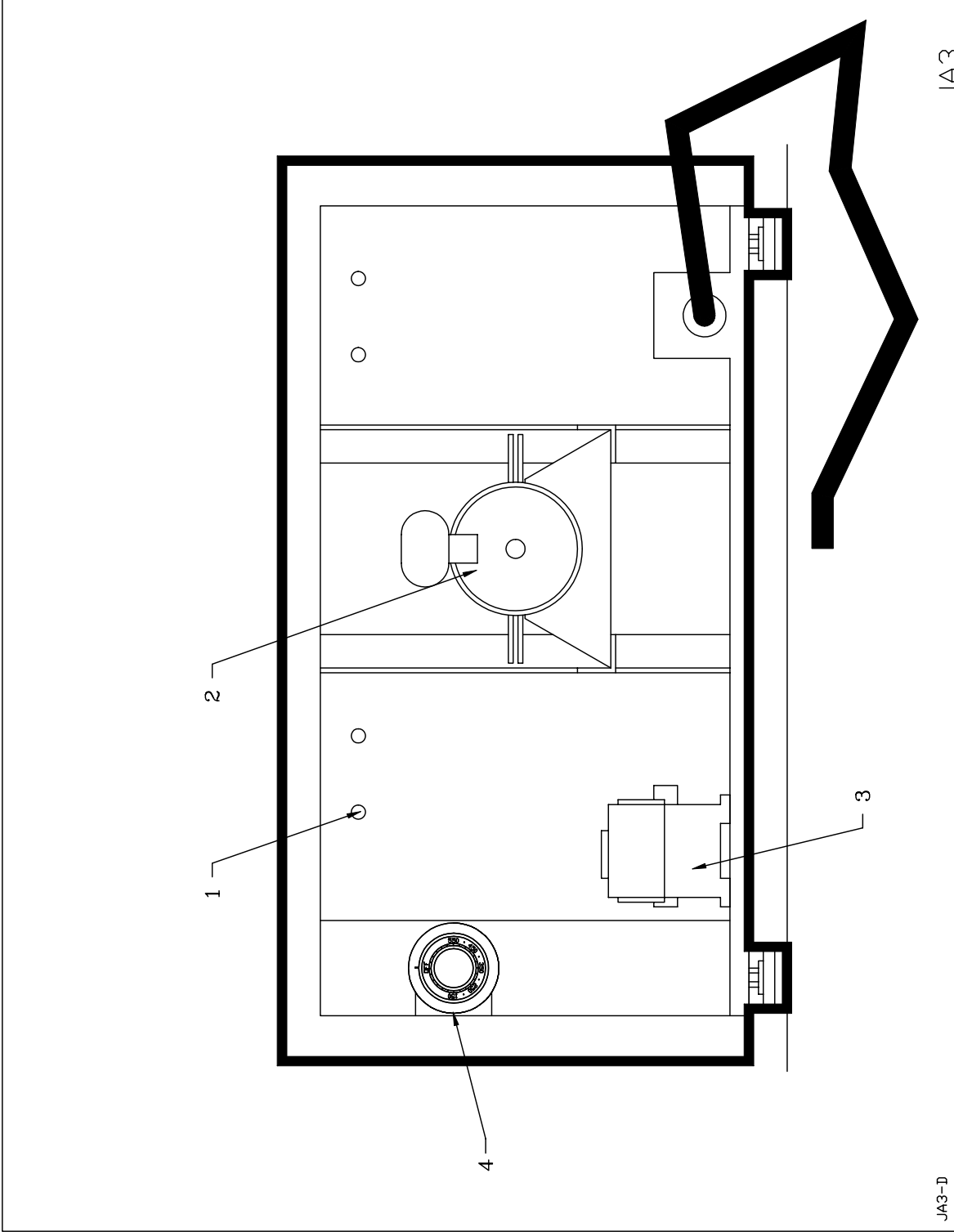
JA3

JA3MC-F

Item	Part Number	Description	Quantity
1	P1710F	OVEN DOOR 17 1/4" X 10 1/4"	1
2	QUP540	BLACK HANDLE	1
3	QUA400	DOOR MAGNET	2
4	ELL650	PILOT LIGHT	1
5	ELT544B	THERMOSTAT RANCO 480 °F	1
AND	ELT552	THERMOSTAT KNOB 550F	1
AND	ELT620	THERMOSTAT BEZEL	1
6	ELI635	SWITCH 20A/130V - 15A/240 V P. LIGHT	1
7	PAP400	AJUSTABLE LEG 1/2-13 NC	4
8	ELB096	5A BREAKER	1
OR	ELB098	2A BREAKER (220V ONLY)	1

**Model : JA-3**

**View : FRONT**



JA3

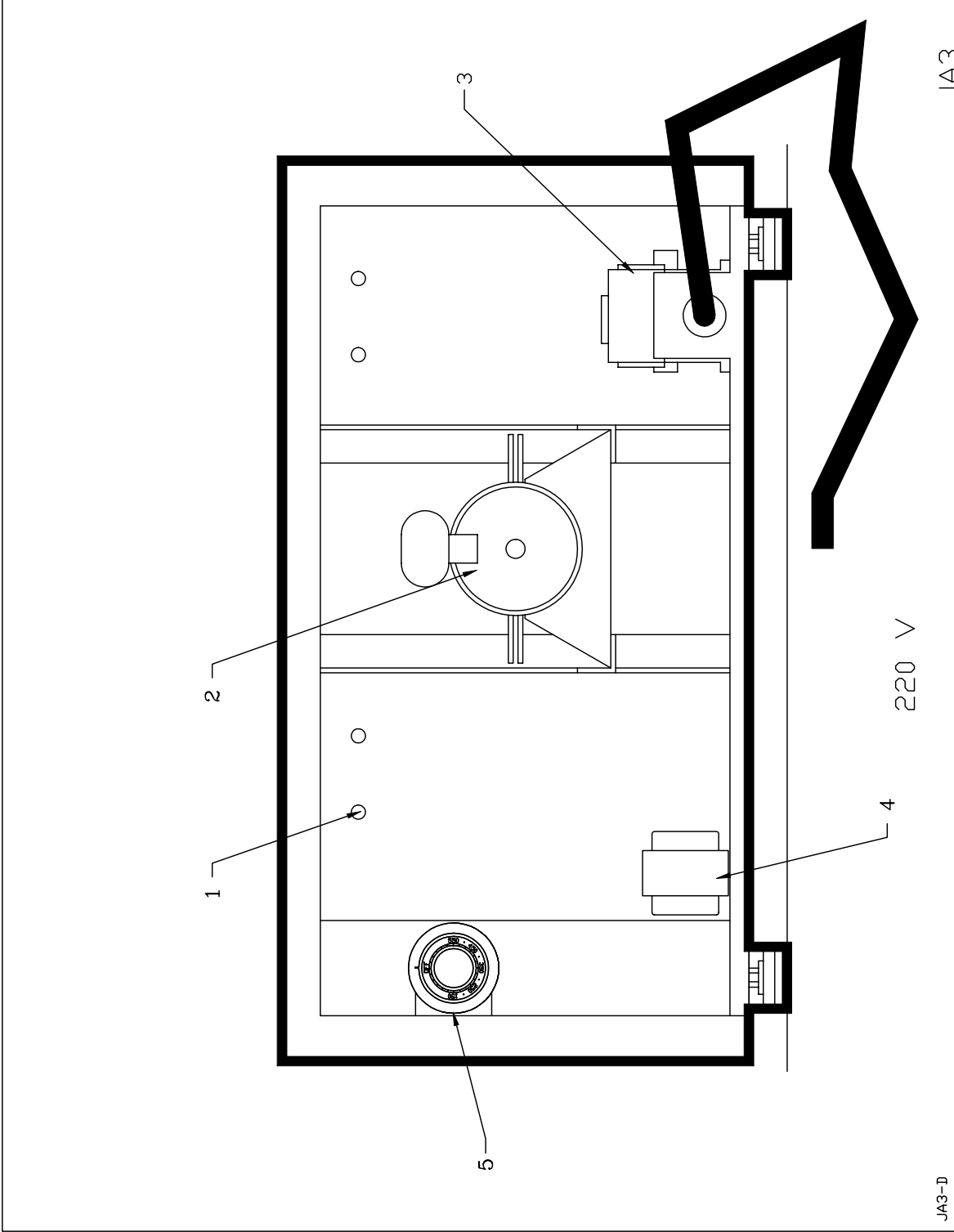
JA3-D

E4

Item	Part Number	Description	Quantity
1	ELE110	STRAIGHT ELEMENT 208V 2500W	2
OR	ELE120	STRAIGHT ELEMENT 240V 2500W	2
2	ELM934	MOTOR 240 VOLTS FOR FC16 (JA3 ONLY)	1
3	ELC908	HEATING CONTACTOR	1
4	ELT680	THERMOSTAT 700°F	1

***Model : JA-3***

***View : BACK***



JA3

220 V

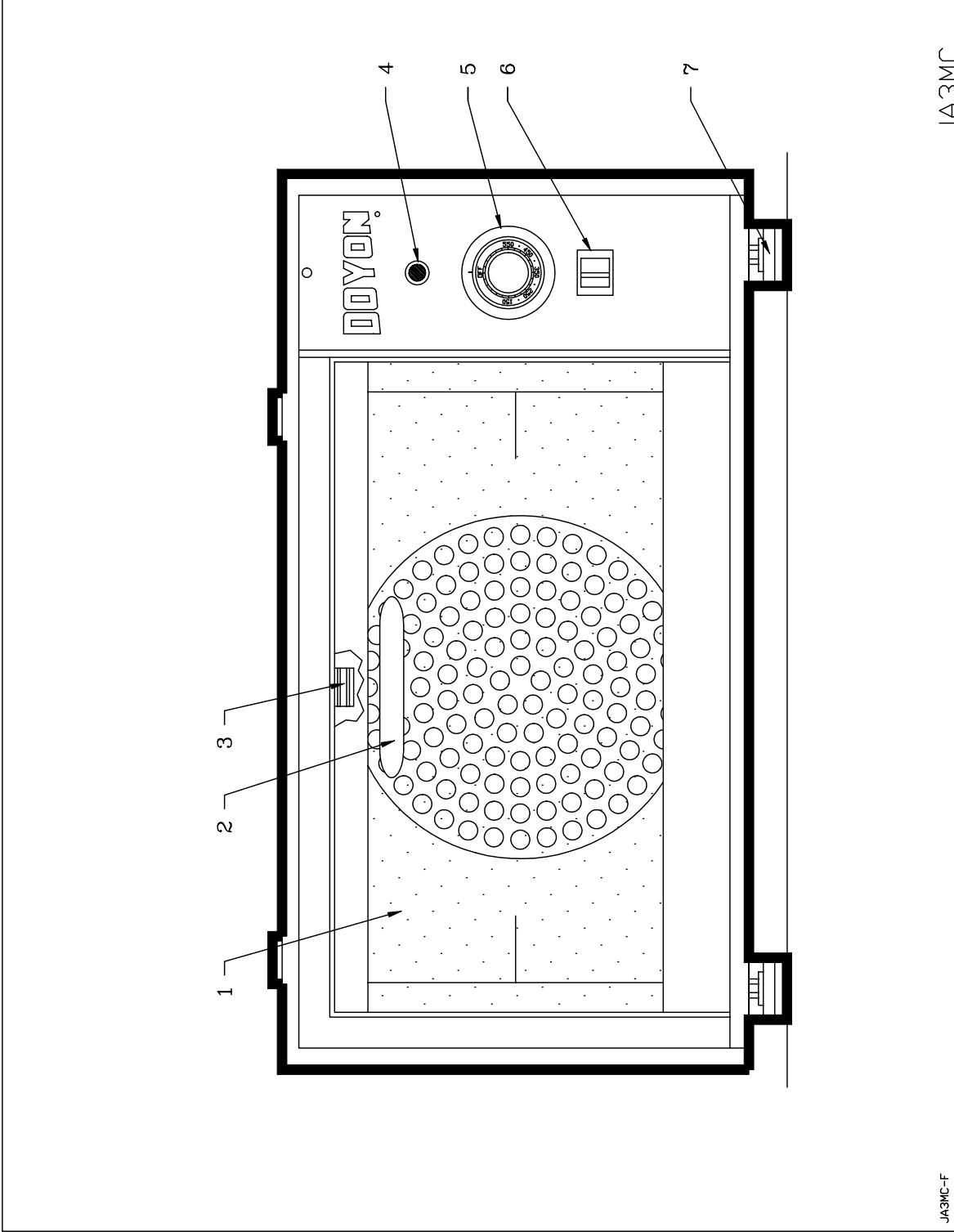
JA3-D

## E6

Item	Part Number	Description	Quantity
		(ON 220V 1PH 50Hz)	
1	ELE120	STRAIGHT ELEMENT 240V 2500W	2
2	ELM934	MOTOR 240 VOLTS FOR FC16 (JA3 ONLY)	1
3	ELC908	HEATING CONTACTOR	1
4	ELT715	TRANSFORMER 240>120 100VA	1
5	ELT680	THERMOSTAT 700°F	1

***Model : JA-3***

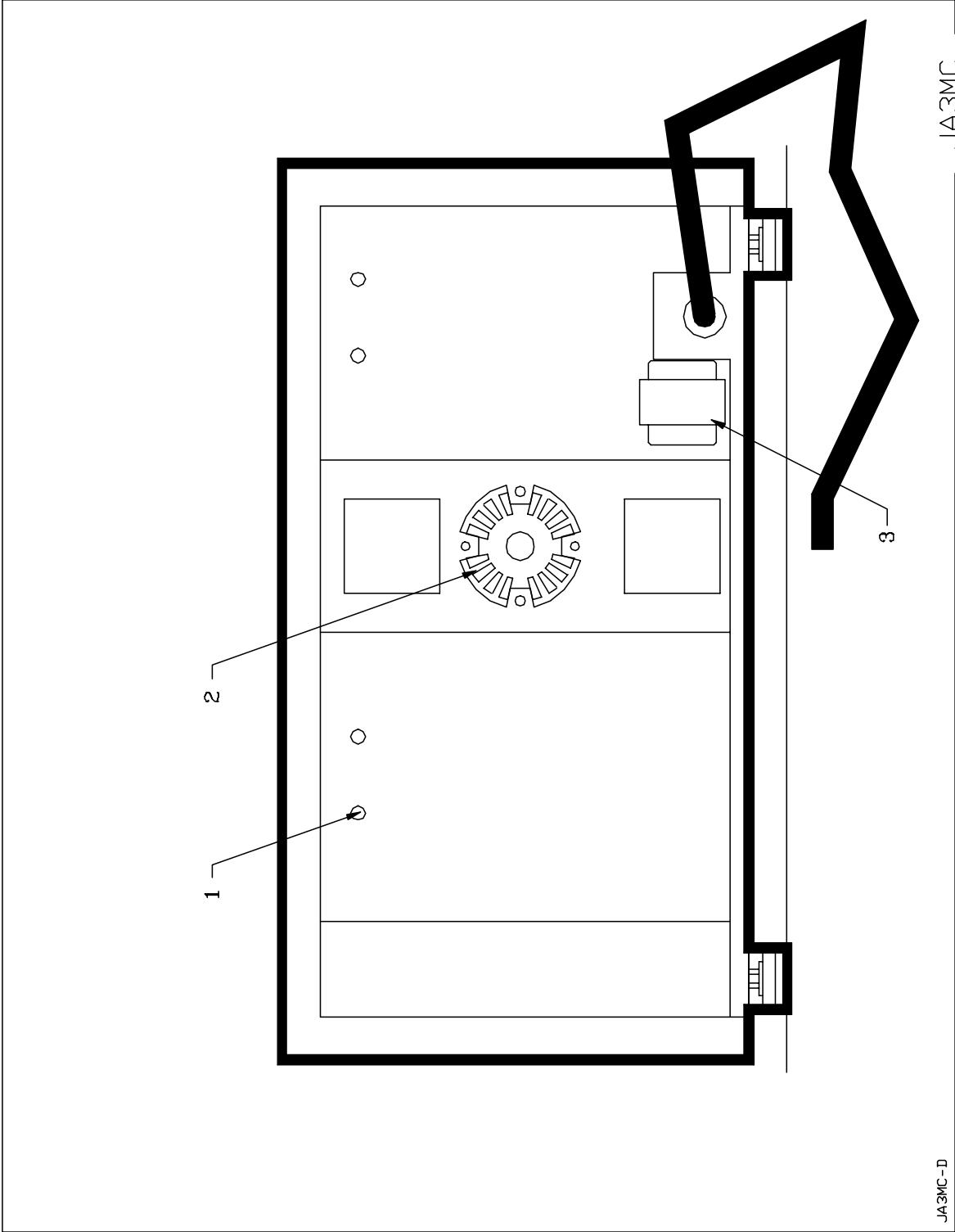
***View : BACK 220V***



Item	Part Number	Description	Quantity
1	P1710F	OVEN DOOR 17 1/4" X 10 1/4"	1
2	QUP540	BLACK HANDLE	1
3	QUA400	DOOR MAGNET	2
4	ELL650	PILOT LIGHT	1
5	ELT544B	THERMOSTAT RANCO 480 °F	1
AND	ELT552	THERMOSTAT KNOB 550F	1
AND	ELT620	THERMOSTAT BEZEL	1
6	ELI635	SWITCH 20A/130V - 15A/240 V P. LIGHT	1
7	PAP400	AJUSTABLE LEG 1/2-13 NC	4

***Model : JA3MC***

***View : FRONT***



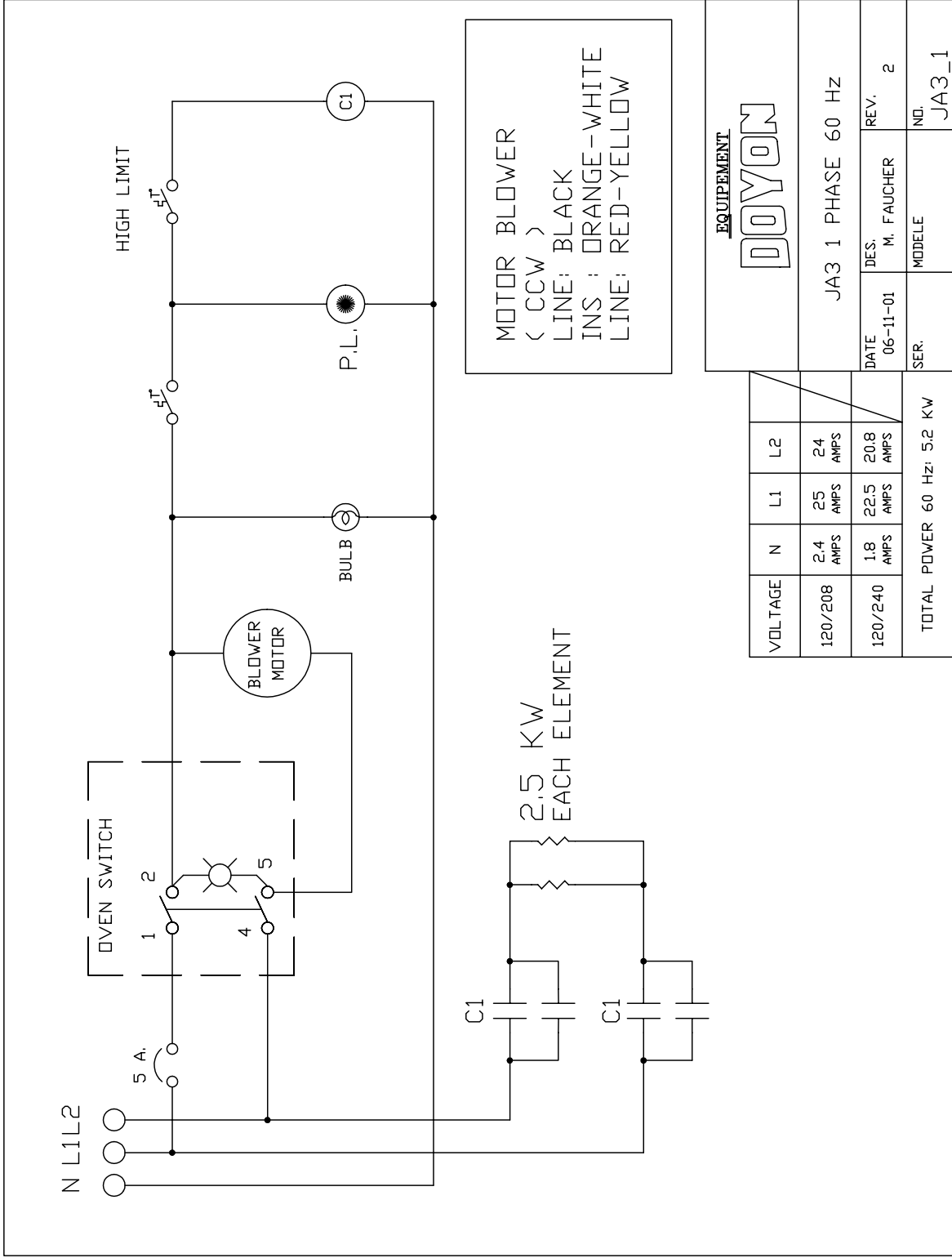
Item	Part Number	Description	Quantity
1	ELE125	STRAIGHT ELEMENT 120V 1000W	2,
OR	ELE300	STRAIGHT ELEMENT 3000W 208 VOLTS (FOR MODEL 3000 WATTS ONLY)	1
OR	ELE305	STRAIGHT ELEMENT 3000W 230 VOLTS (FOR MODEL 3000 WATTS ONLY)	1
OR	ELE121	STRAIGHT ELEMENT 120V 1500W (FOR MODEL 1500 WATTS ONLY)	1
2	ELM957	MOTOR 1/70HP 115V 60 OR 50Hz	1
3	ELT715	TRANSFORMER 240>120 100VA (220V 1PH 50Hz ONLY)	1

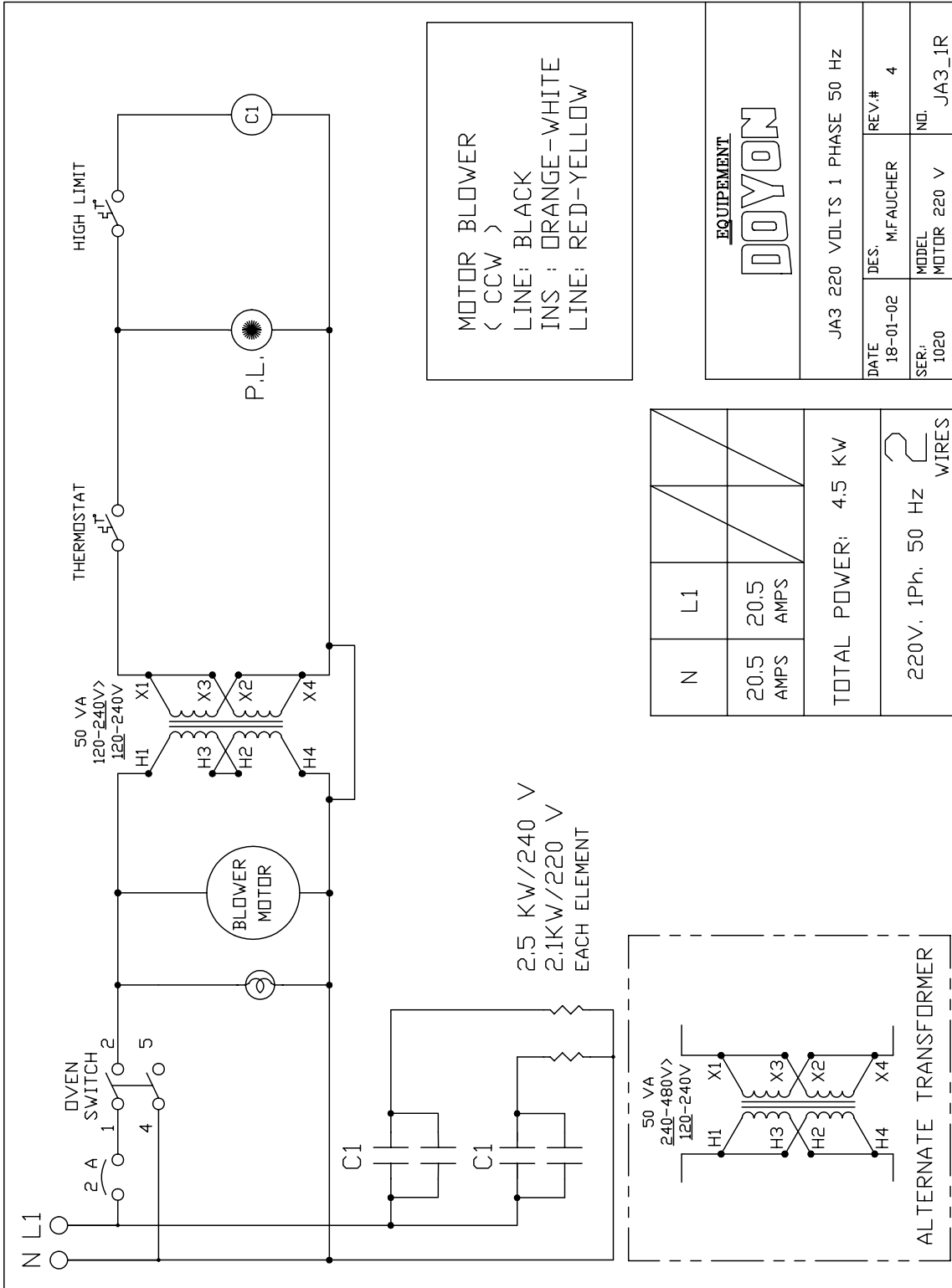
**Model : JA3MC**

**View : BACK**

SECTION  
G

**ELECTRIC SCHEMATIC**





MOTOR BLOWER  
 ( CCW )  
 LINE: BLACK  
 INS : ORANGE-WHITE  
 LINE: RED-YELLOW

2.5 KW/240 V  
 2.1KW/220 V  
 EACH ELEMENT

EQUIPMENT  
**DOYON**

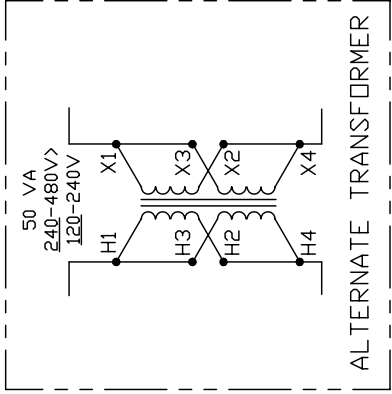
J A3 220 VOLTS 1 PHASE 50 Hz

DATE	DES.	REV.#
18-01-02	MFAUCHER	4
SER:	MODEL	ND.
1020	MOTOR 220 V	J A3_1R

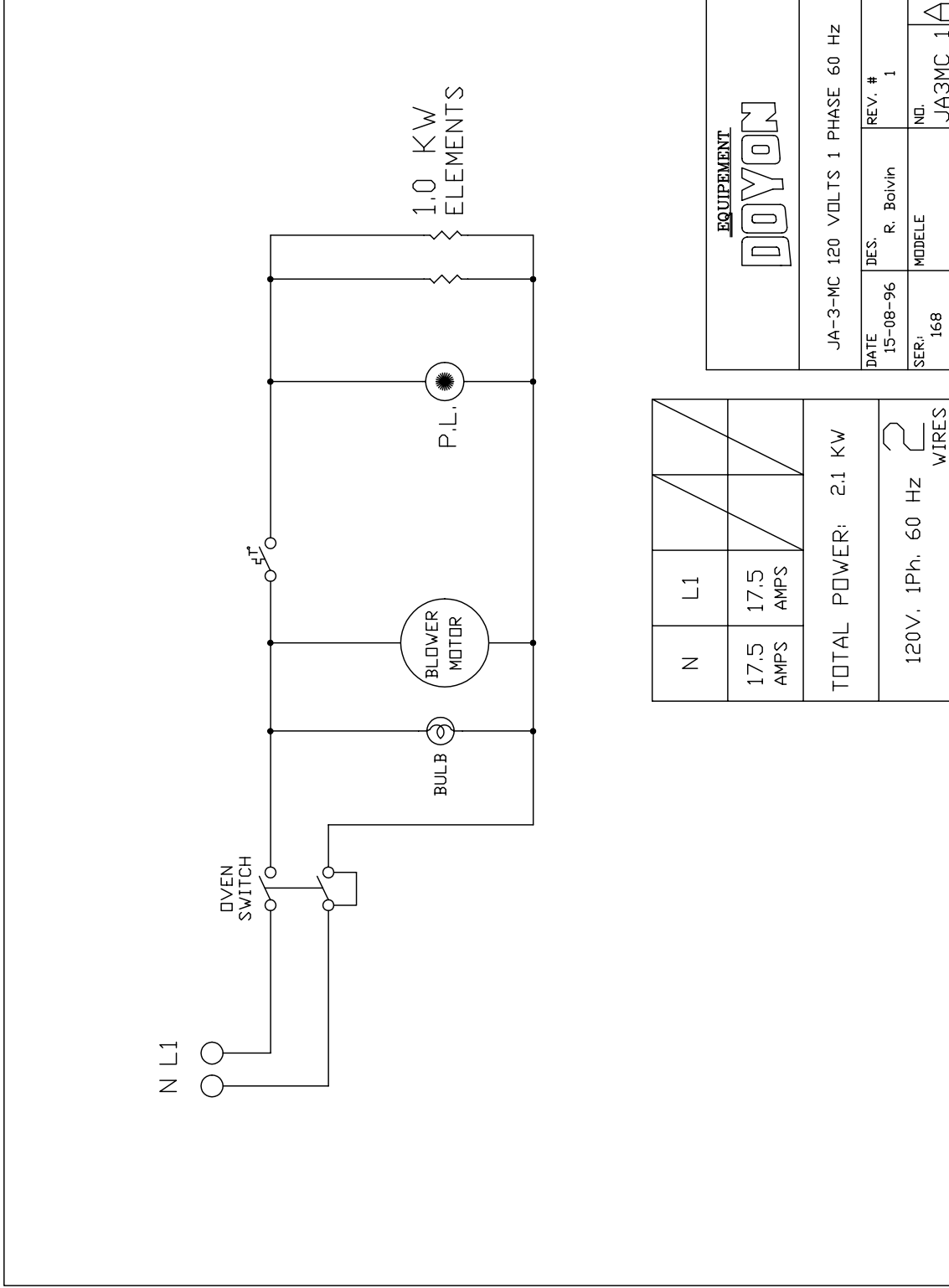
N	L1
20.5 AMPS	20.5 AMPS

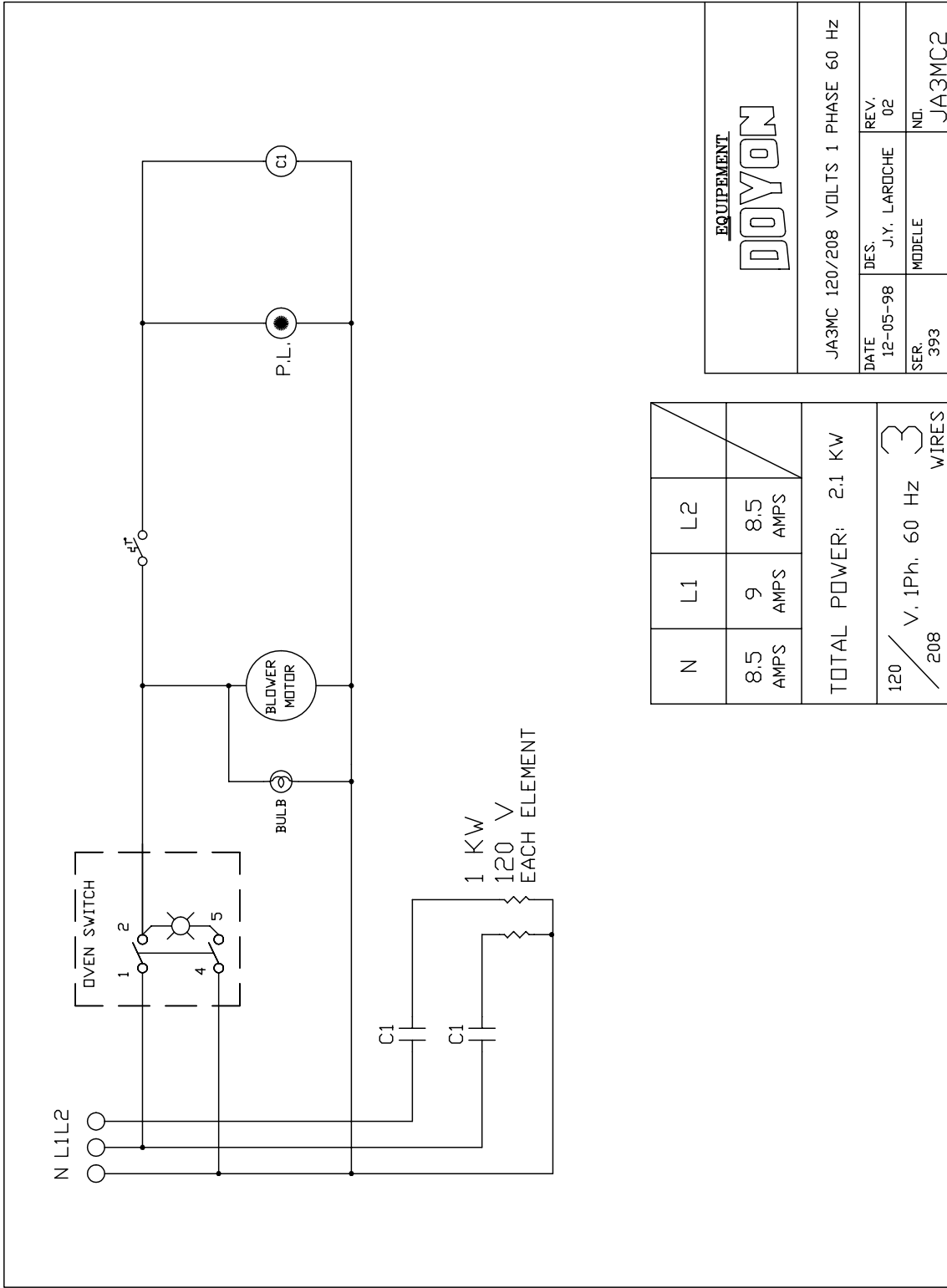
TOTAL POWER: 4.5 KW

220V, 1Ph, 50 Hz  
 2 WIRES



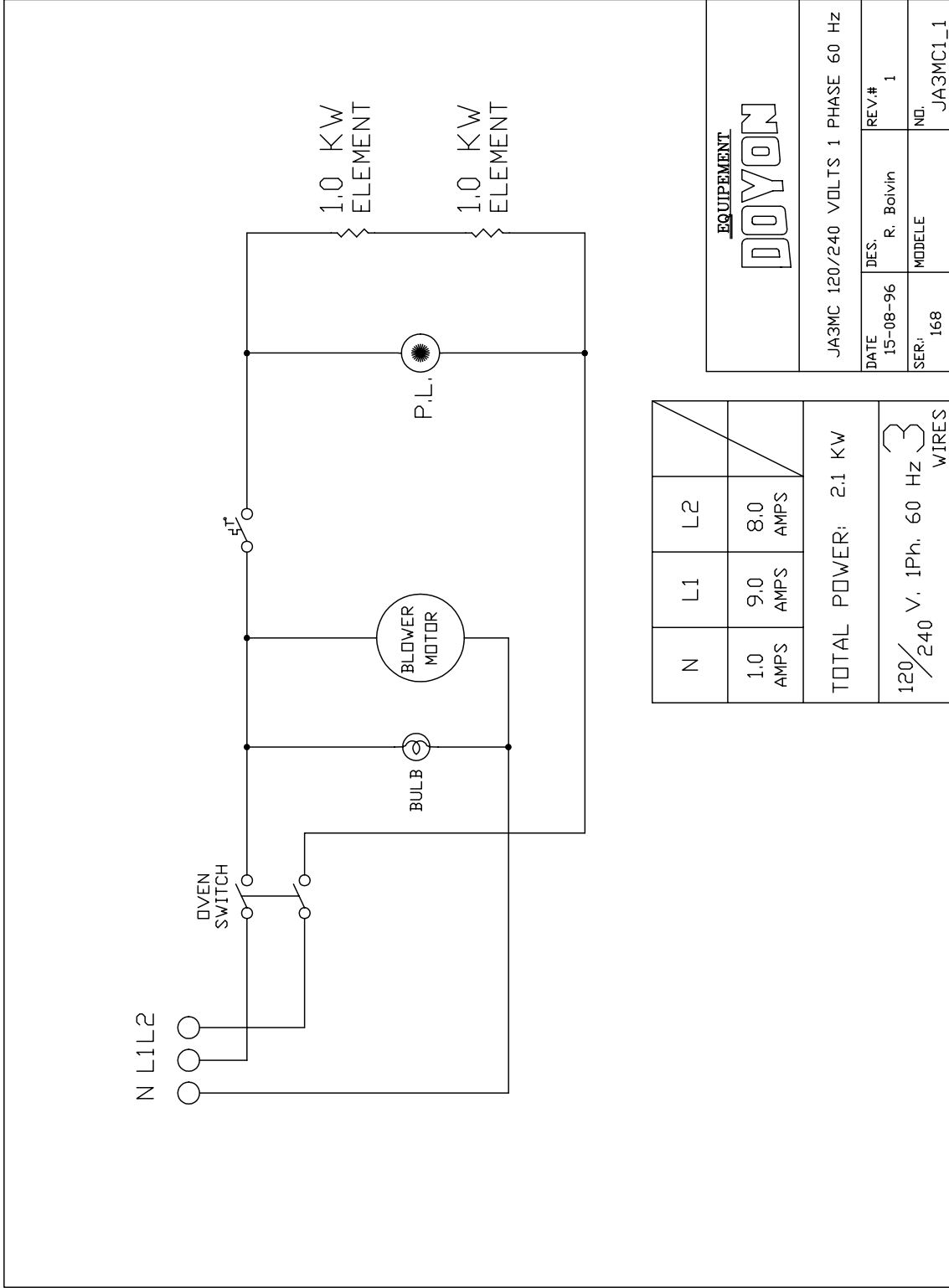
ALTERNATE TRANSFORMER

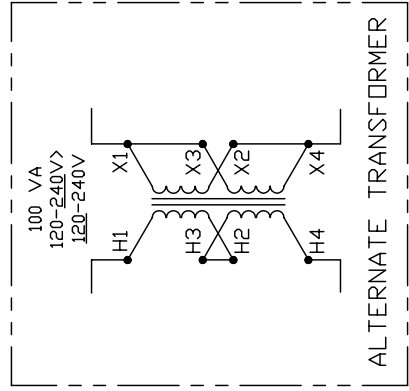
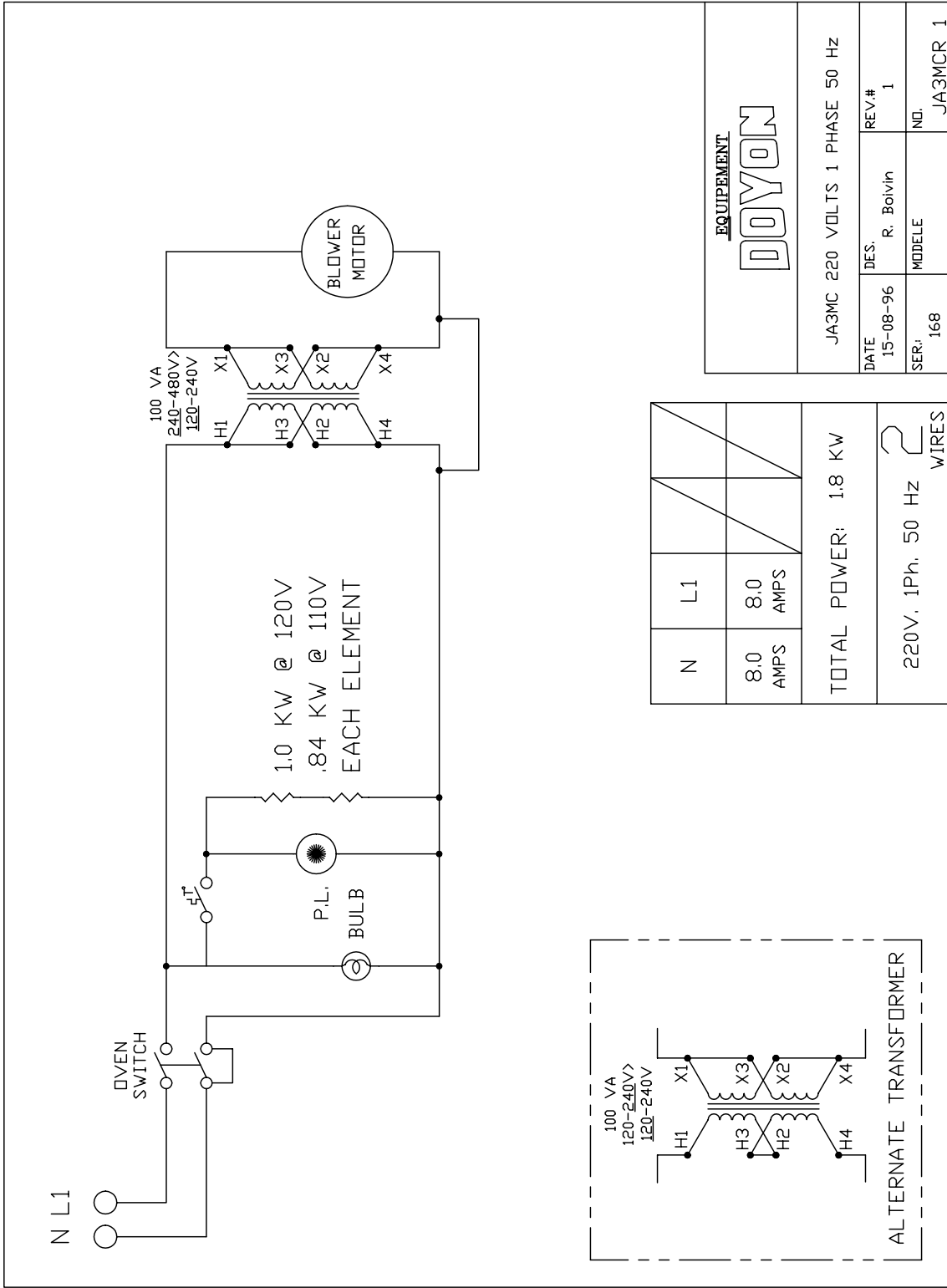




N	L1	L2
8.5 AMPS	9 AMPS	8.5 AMPS
TOTAL POWER: 2.1 KW		
120 / 208 V, 1Ph, 60 Hz		
3 WIRES		

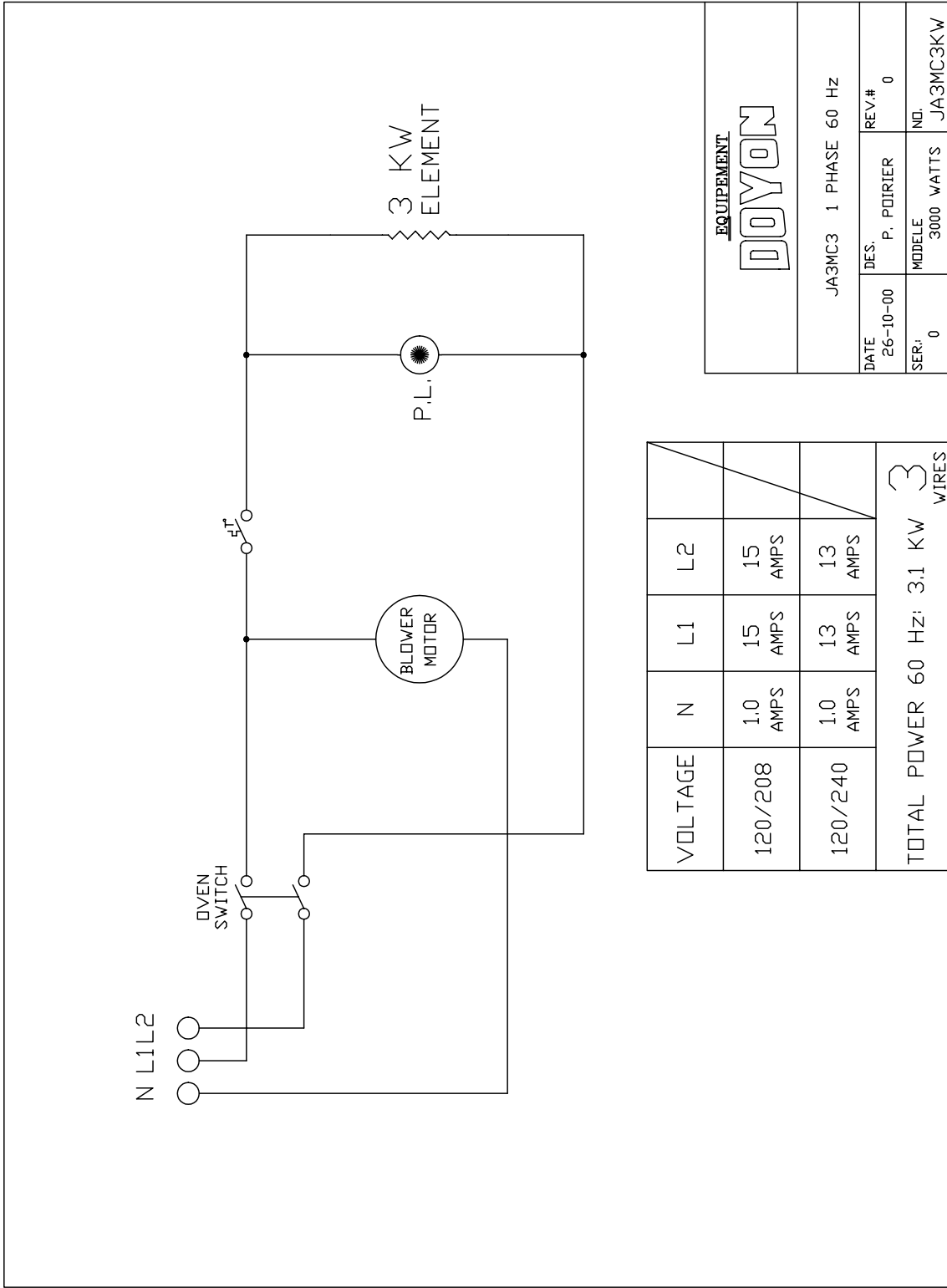
<b>EQUIPEMENT</b>			
<b>DOYON</b>			
DATE	DES.	REV.	
12-05-98	J.Y. LAROCHE	02	
SER.	MODELE	NO.	
393			JA3MC2





N	L1		
8.0 AMPS	8.0 AMPS		
TOTAL POWER: 1.8 KW			
220V, 1Ph, 50 Hz 2 WIRES			

<b>EQUIPEMENT</b>			
<b>DOYON</b>			
JA3MC 220 VOLTS 1 PHASE 50 Hz			
DATE	DES.	REV.#	
15-08-96	R. Boivin	1	
SER:	MODELE	NO.	
168			JA3MCR_1



VOLTAGE	N	L1	L2
120/208	1.0 AMPS	15 AMPS	15 AMPS
120/240	1.0 AMPS	13 AMPS	13 AMPS
TOTAL POWER 60 Hz: 3.1 Kw			
3 WIRES			

<b>EQUIPEMENT</b> <b>DOYON</b>	
JA3MC3 1 PHASE 60 Hz	
DATE	REV.#
26-10-00	0
SER:	NO.
0	JA3MC3KW
DES. P. POIRIER	MODELE
	3000 WATTS

# **LIMITED WARRANTY**

**(Continental United States Of America And Canada Only)**

Doyon Equipment Inc. guarantees to the original purchaser only that its product are free of defects in material and workmanship, under normal use.

This warranty does not cover any light bulbs, thermostat calibration or defects due to or resulting from handling, abuse, misuse, nor shall it extend to any unit from which the serial number has been removed or altered, or modifications made by unauthorized service personnel or damage by flood, fire or other acts of God. Nor will this warranty apply as regards to the immersion element damaged by hard water.

The extent of the manufacturer's obligation under this warranty shall be limited to the replacement or repair of defective parts within the warranty period. The decision of the acceptance of the warranty will be made by Doyon Equipment service department, which decision will be final.

The purchaser is responsible for having the equipment properly installed, operated under normal conditions with proper supervision and to perform periodic preventive maintenance.

If any parts are proven defective during the period of one year from date of purchase, Doyon Equipment Inc. hereby guarantees to replace, without charge, F.O.B. Linière, Quebec, Canada, such part or parts.

Doyon Equipment Inc will pay the reasonable labor charges in connection with the replacement parts occurring within one year from purchase date. Travel over 50 miles, holiday or overtime charges are not covered. After one year from purchase date, all labor and transportation charges in connection with replacement parts will be the purchaser's responsibility.

Doyon Equipment Inc. does hereby exclude and shall not be liable to purchaser for any consequential or incidental damages including, but not limited to, damages to property, damages for loss of use, loss of time, loss of profits or income, resulting from any breach or warranty.

In no case, shall this warranty apply outside Canada and continental United States unless the purchaser has a written agreement from Doyon Equipment Inc.