

Statement of Responsibilities

This document is for use by experienced and trained Qualified Cleveland Range, LLC Authorized Service Representatives who are familiar with both the safety procedures, and equipment they service.

Cleveland Range, LLC assumes no liability for any death, injury, equipment damage, or property damage resulting from use of, improper use of, or failure to use the information contained in this document.

Cleveland Range, LLC has made every effort to provide accurate information in this document, but cannot guarantee that this document does not contain unintentional errors and omissions.

The information in this document may be subject to technical and technological changes, revisions, or updates.

Cleveland Range, LLC assumes no liability or responsibility regarding errata, changes, revisions, or updates.

Qualified Cleveland Range, LLC Authorized Service Representatives are obligated to follow industry standard safety procedures, including, but not limited to, OSHA regulations, and disconnect / lock out / tag out procedures for all utilities including steam, and disconnect / lock out / tag out procedures for gas, electric, and steam powered equipment and / or appliances

All utilities (gas, electric, water and steam) should be turned OFF to the equipment and locked out of operation according to OSHA approved practices during any servicing of Cleveland Range equipment

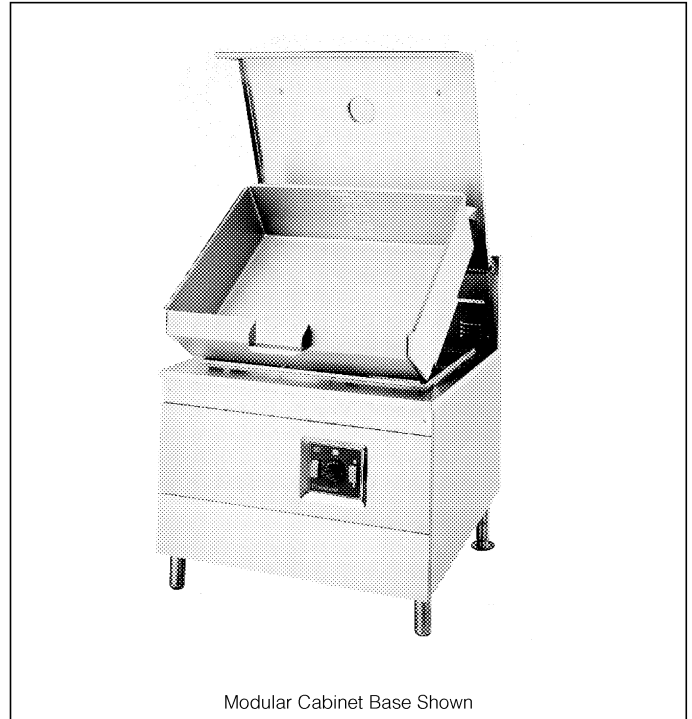
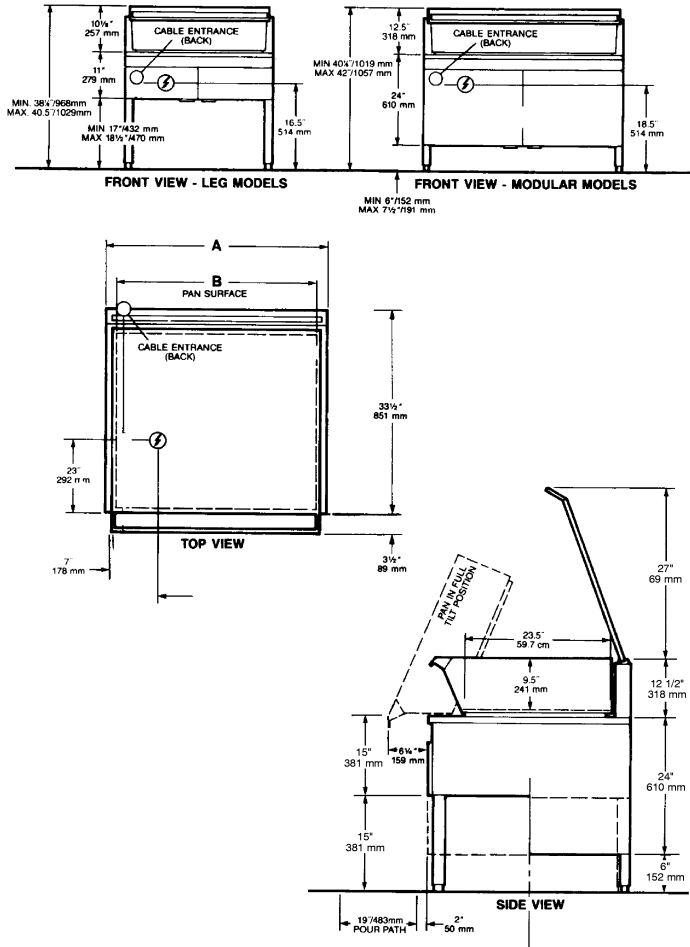
Qualified Cleveland Range, LLC Authorized Service Representatives are obligated to maintain up-to-date knowledge, skills, materials and equipment.

ELECTRIC TILTING OPEN BASE AND MODULAR SKILLETS

MODELS: SEL-30-TR SEM-30-TR
 SEL-40-TR SEM-40-TR

ITEM NUMBER _____

JOB NAME / NUMBER _____



SHORT FORM SPECIFICATION

Shall be CLEVELAND, Tilting Skillet; Model SE - ____ - TR ____ KW, ____ Volts holding no less than ____ Gallons; Complete with thermostatic and Safety Controls; Gallon Markings; Stainless Steel Clad; 5/8" Cooking Surface; Power Tilt; Spring Assist Cover with adjustable Vent. All Stainless Steel Construction. No Clearances Required.

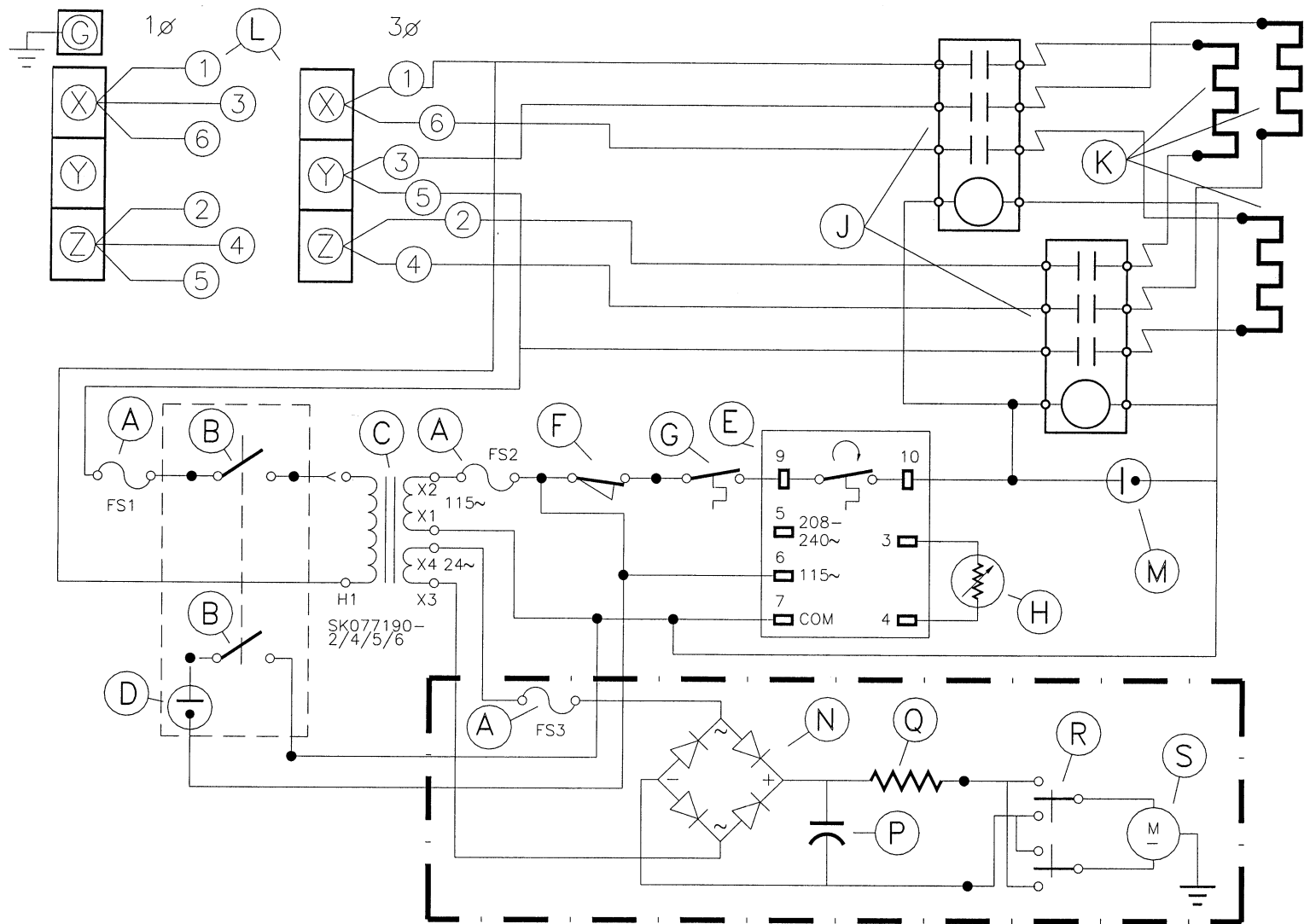
MODEL	CAPACITY		DIMENSIONS				LOADING CHART								SERVICE CONNECTION			
	U.S. Gallons	Litres	A		B		Total kw. Load	3-Phase - 240V			3 Phase - 208V			Single Phase		⚡	Electric direct connection 3 wire nominal line	
			in.	mm	in.	mm		X	Y	Z	X	Y	Z	240V	208V			
SEL-30-TR SEM-30-TR	30	115	36	914	32	813	14.4	35	35	35	40	40	40	60	70	INSTALLATION NOTES		
SEL-40-TR SEM-40-TR	40	150	48	1219	44	1118	18.0	43.5	43.5	43.5	50.00	50.0	50.0	75.0	87.0			COMBUSTIBLE WALL CLEARANCES
																	in.	
																		mm
																		1
																		25

Cleveland Range reserves right of design improvement or modification, as warranted.

CLEVELAND RANGE SEL-R SEQUENCE OF OPERATIONS

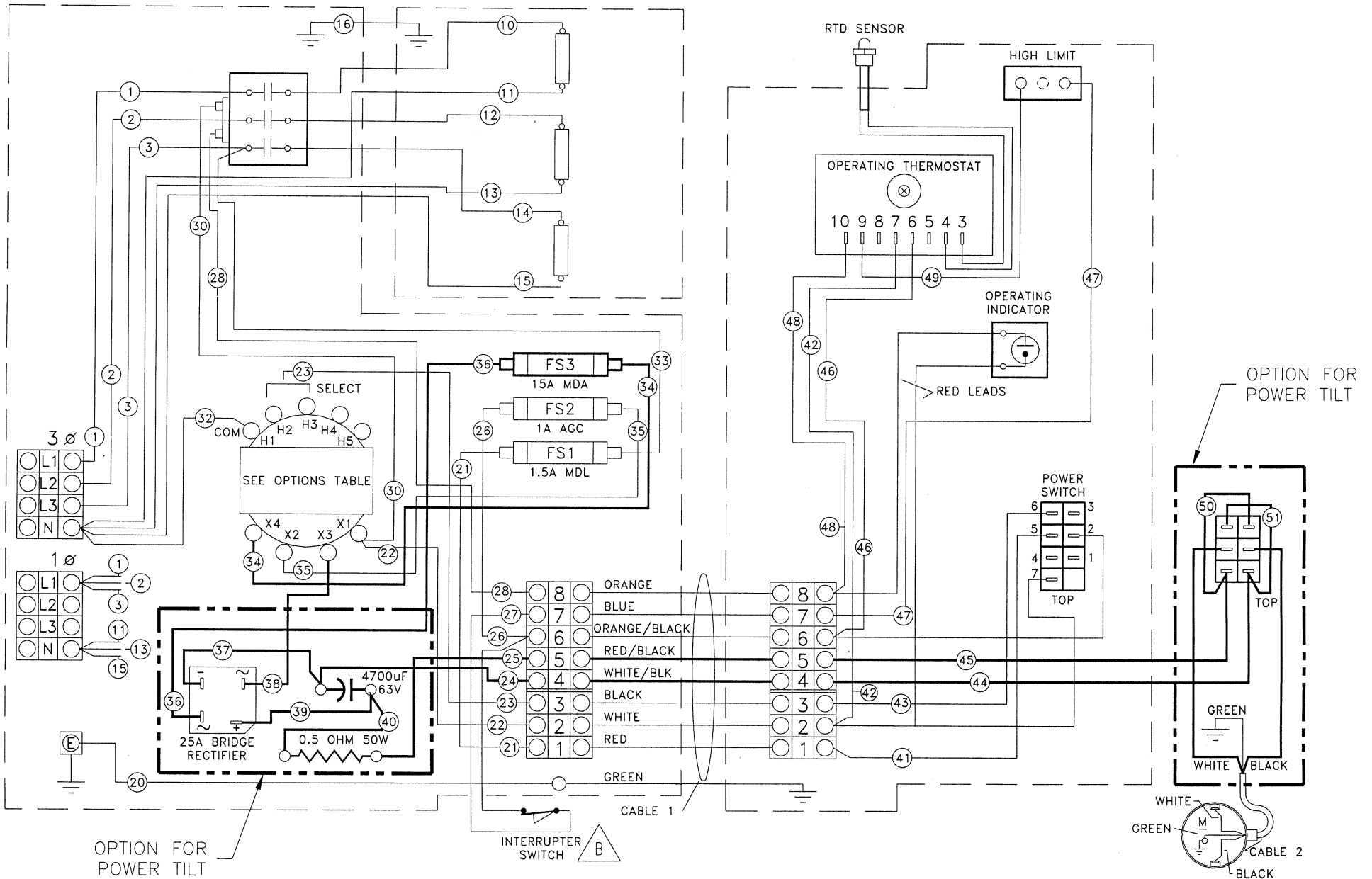
When using these instructions refer to the SEL-R wiring schematic.

1. Supply Voltage is sent to the normally open contacts of the element contactor
2. Supply Voltage is sent through the 1.5 amp fuse to the power switch
3. With the power switch in the on position, supply voltage is sent to the primary of the main transformer.
4. 120 VAC is sent from pins 1 and 2 on the secondary of the main transformer through the 1 amp fuse to the tilt interrupter switch.
 - If the skillet is in the down position 115 VAC is sent from the interrupter switch through the high limit to pin 9 on the thermostat.
5. When the thermostat is calling for heat 115 VAC is sent to the coil of the element contactor.
 - The normally open contacts of the element contactor close sending supply voltage to the elements.
 - The elements will heat the skillet until the thermostat is satisfied.
6. When the thermostat is satisfied 115VAC is removed from pin 10 and the heat circuit is de-energized.
7. If the skillet is equipped with the optional Power Tilt, 24 VAC is sent from terminals 3 and 4 of the secondary of the main transformer through the 15-amp fuse to the bridge rectifier
8. The AC current is rectified to DC voltage that is then filtered by the capacitor and resistor and sent to the tilt switch.
9. When the switch is in the up position the DC motor is energized and the actuator extends.
10. When the switch is in the down position the polarity is reversed and the motor is energized to retract the actuator.



- A - FUSE
- B - POWER SWITCH
- C - TRANSFORMER
- D - PILOT - RED
- E - ELECTRONIC THERMOSTAT
- F - INTERRUPTER SWITCH
- G - HIGH LIMIT SWITCH
- H - RTD SENSOR
- J - CONTACTOR

- K - ELEMENT
- L - TERMINAL BLOCK
- M - PILOT - YELLOW
- N - RECTIFIER
- P - CAPACITOR
- Q - RESISTOR
- R - TILT CONTROL
- S - ACTUATOR
- POWER TILT ONLY

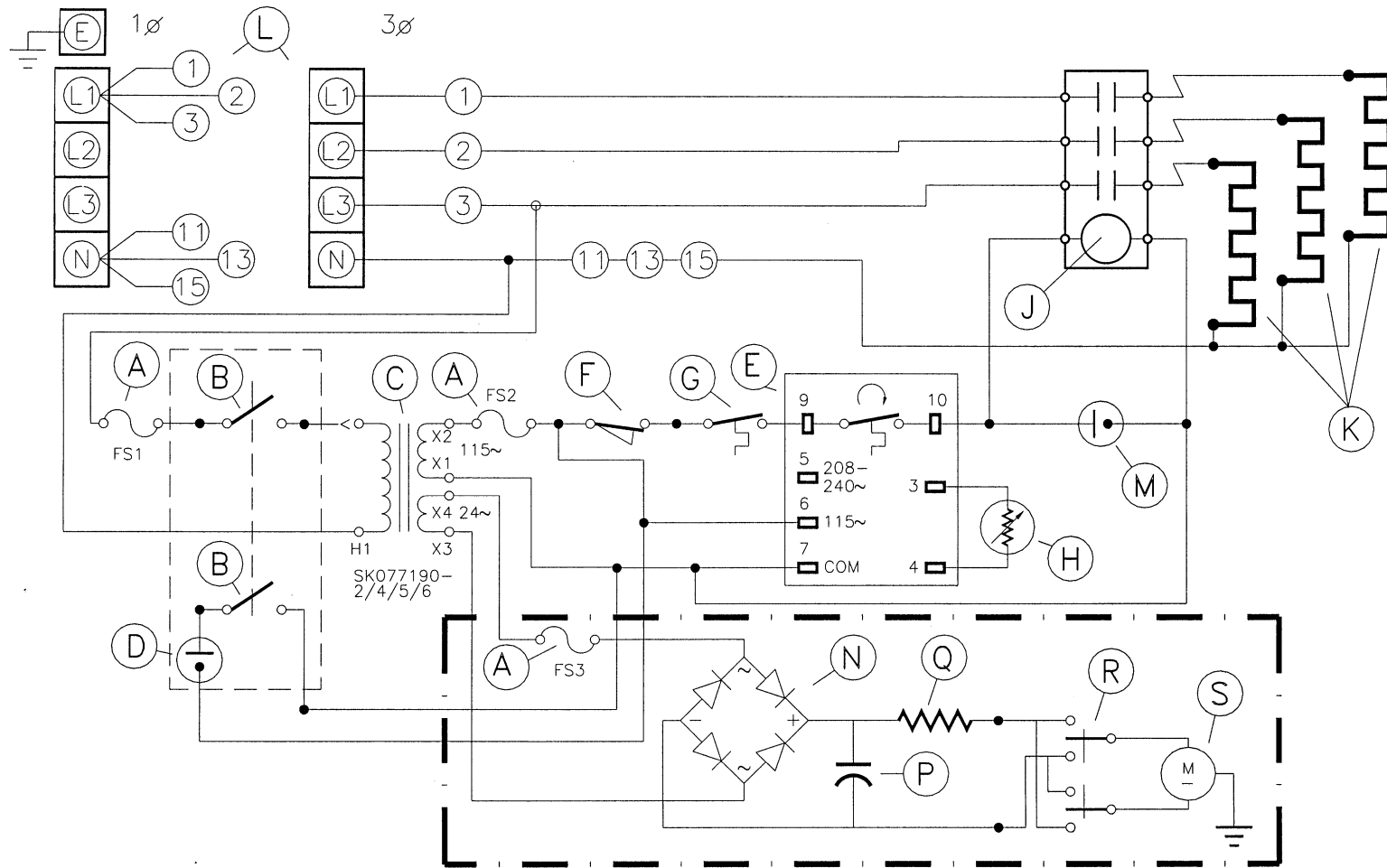


MODEL F30,40E-L,MR, SEL30,40TR 220/240V 3N~

SK90123-3

(220/380, 240/415 1, 3N~)

OPTIONS TABLE



- A - FUSE
- B - POWER SWITCH
- C - TRANSFORMER
- D - PILOT-RED
- E - ELECTRONIC THERMOSTAT
- F - INTERRUPTER SWITCH
- G - HIGH LIMIT SWITCH
- H - RTD SENSOR
- J - CONTACTOR

- K - ELEMENT
 - L - TERMINAL BLOCK
 - M - PILOT-YELLOW
 - N - RECTIFIER
 - P - CAPACITOR
 - Q - RESISTOR
 - R - TILT CONTROL
 - S - ACTUATOR
- POWER TILT ONLY

**PROBLEM:
SEL-R
Skillet won't
Heat**

