



30 Pine Street • New Rochelle • New York • 10801

914 / 576 - 0200

914 / 576 - 0605 fax

1 - 800 - 431 - 2745 US & Canada

www.bakerspride.com web address

C011-G

Full Size Gas Convection Oven

PARTS LIST

Cyclone
SERIES



Model Number: **C011-G**

Type of Gas: Natural

L.P.

Other

Serial Number: _____

Voltage/Phase: 115/1

208-240/1

230/1 (CE)

C011-G

Full Size Gas Convection Oven

30 Pine Street • New Rochelle • New York • 10801

914 / 576 - 0200

914 / 576 - 0605 fax

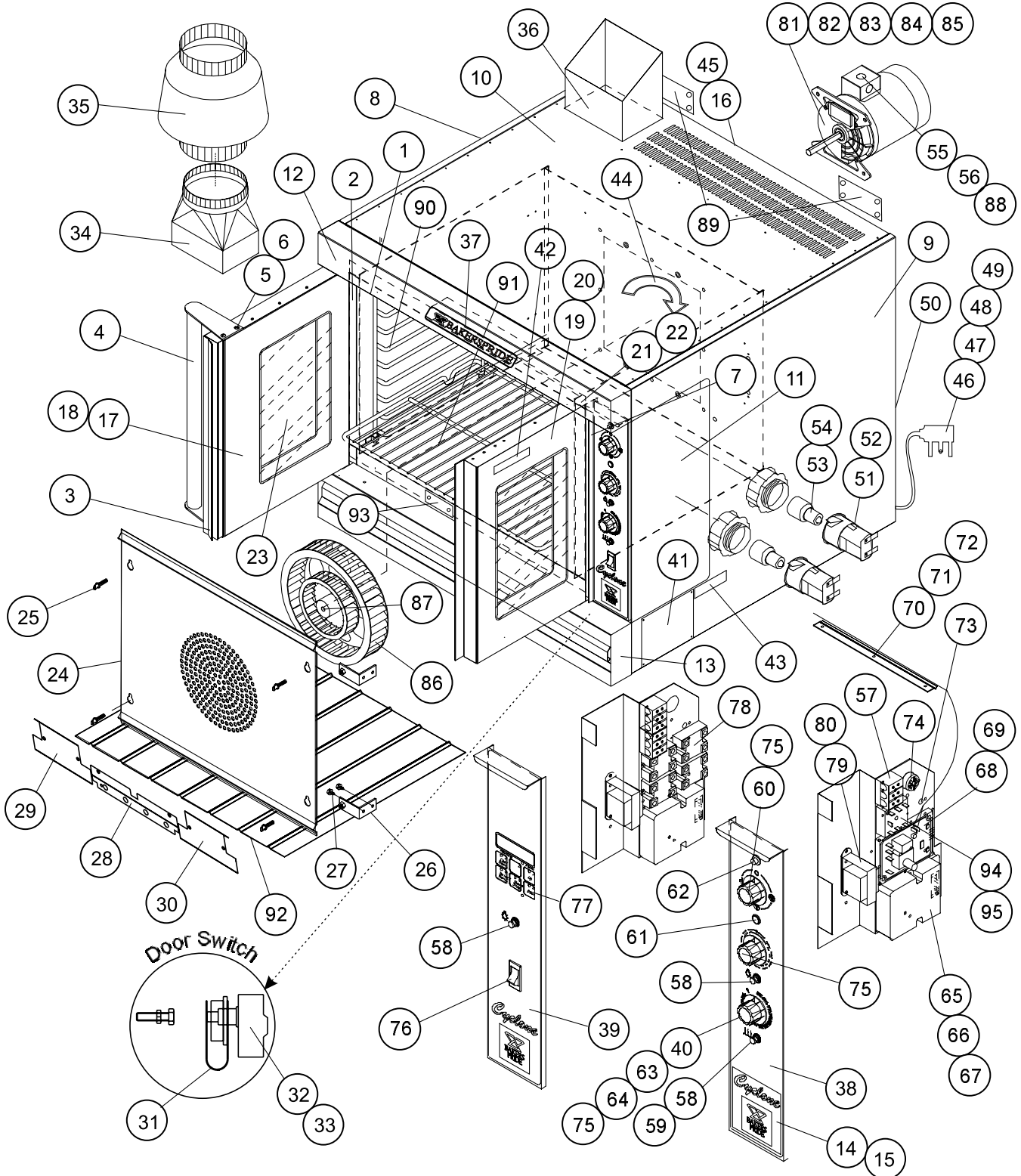
1 - 800 - 431 - 2745 US & Canada

www.bakerspride.com web address



Figure A

Exterior / Interior / Controls / Doors





30 Pine Street • New Rochelle • New York • 10801

914 / 576 - 0200
 914 / 576 - 0605 fax
 1 - 800 - 431 - 2745 US & Canada
 www.bakerspride.com web address

CO11-G

Full Size Gas Convection Oven

Item	Part #	Description	Item	Part #	Description
Exterior / Interior / Controls / Doors					
1	E3450X	Door Seal, Top or Bottom, each (2)	49	P6007X	Elec Line Cord, 250V (UK)
2	E3451K	Door Seal, Sides, each (2)	50	N5048P	Rear Pipe Connection
3	E3466U	Door Closure Strip	51	P1144X	Snap-In Light Assy (w/130V Bulb)
4	S1317U	Door Handle	52	P1145X	Snap-In Light Assy (w/240V Bulb)
5	Q1477A	Screw, FH 10-32x1/2 (4)	53	P1146X	Light Bulb (15W, 130V)
6	Q3047A	#10 Lockwasher, Countersunk, Ext. (4)	54	P1147X	Light Bulb (15W,240V)
7	E3487X	Vertical Trim	55	P1082A	Conduit BX, 3/8"
8	E3485K	Outer Cover (Left)	56	P1084A	Bushing, Anti-Short, 3/8"
9	E3486K	Outer Cover (Right)	57	P1003X	Terminal Block (3 Pole)
10	E3501K	Outer Cover (Top)	58	M1049X	Switch, Momentary (Light &/or Steam)
11	E3499X	Access Cover (Side)	59	S1171A	Plug Button, 7/16"
12	E3488X	Top Trim	60	M1326X	Switch, Rotary (EGO)
13	E3490X	Bottom Apron	61	M1339A	Pilot Light Amber (Thermostat)
14	E3498X	Access Cover (Front)	62	M1340A	Pilot Light Green (Power)
15	S3203K	Latch Assy (Magnetic)	63	M1332X	Timer, 60 Minutes (120V)
16	E3514X	S/S Perforated Rear Panel	64	M1346X	Timer, 60 Minutes (208/240V)
17	E3454X	Door Assy Left (No Window)	65	M2138X	Ignition Control Module (24V)
18	E3458X	Door Assy Left (w/Window)	66	M1355A	Ignition Control Module, CE (24V)
19	E3456X	Door Assy Right (No Window)	67	M2139A	Harness w/Terminals
20	E3460X	Door Assy Right (w/Window)	68	M1203X	GC-20 T-stat w/Knob (120V)
21	S3229A	Door Rod	69	M1227X	GC-20 T-stat w/Knob (208/240V)
22	Q4033A	Roll Pin 1/4 x 1 1/4	70	M1204X	Temperature Sensor, 60"
23	S1048X	Window Assy	71	E3051K	Clamp, Temperature Sensor (1)
24	E3053K	Baffle Plate	72	P1042A	Victor Clip, Temp Sensor (3)
25	Q2009A	Thumb Screw, 1/4-20x1/2 (4)	73	M1176X	Potentiometer
26	E3095X	Baffle Plate Bracket Assy (4)	74	M1335X	Bell Audiolarm
27	Q1414A	Screw, Hex Hd, #10x3/4 (8)	75	S1311X	Knob (3)
28	E3481X	Combustion Chamber (Front Center)	76	M1352X	Ckt Breaker, 120-240V, 15A
29	E3482X	Combustion Chamber (Front Left)	77	M1306X	Minichief 2000 (Watlow)
30	E3511X	Combustion Chamber (Front Right)	78	M1356A	Solid State Relay, CE
31	E3471K	Door Switch Actuator	79	M1145X	Transformer (120V-24V)
32	M1102X	Microswitch (Rotary)	80	M1174X	Transformer (208/240V-24V)
33	M1172A	Microswitch (Minichief)	81	M1157X	Motor, 1/4HP, 2Spd, 115V, 60
34	R3166A	Flue Adapter 7" (For Direct Venting Only)	82	M1217X	Motor, 1/4HP, 2Spd, 200-230V,50-60
35	R3113A	Flue Diverter (For Direct Venting)	83	Q3008A	Flat Washer (4)
36	R3167A	Flue Diverter (For Collection Hood)	84	Q3014A	Lock Washer, Split (4)
37	U1043X	Bakers Pride Name Plate (13 3/4")	85	Q2204A	Nut, 5/16 HX, 5/16-18 (4)
38	U1290A	Control Panel Overlay (Rotary)	86	S1195X	Blower Wheel
39	U1291A	Control Panel Overlay (Minichief)	87	Q2302A	Bolt, Wheel Puller 3/8-16x2 Hx (2)
40	U1296A	Timer Overlay (50 cycle only)	88	P1108A	Conduit Connector, 3/8"x1/2", 90 deg.
41	U1216A	Rating Plate	89	E3225X	Stacking Bracket, CO11-G2 Only (each)
42	U1055A	Caution Hot Label	90	T3044A	Rack Support
43	U1128A	Supply Connection	91	T3043A	Wire Rack
44	U1169A	Motor Rotation Arrow	92	E3483K	Flame Guard
45	U1210A	Installation Warning	93	E3531K	Door Limit Block
46	P6004X	Elec Line Cord, 115V (US & Can)	94	M1175X	Steam Timer, 115V
47	P6005X	Elec Line Cord, 250V (US & Can)	95	M1231A	Steam Timer, 208/240V (Export)
48	P6006X	Elec Line Cord, 250V (Europe)			
Conversion Kit (Natural to LP)			Conversion Kit (LP to Natural)		
4	R3175A	#57 Burner Orifice Spud, LP	4	R3180A	#48 Burner Orifice Spud, Nat
1	M1233X	LP Kit for Combination Valve	1	M1343X	Natural Kit for Combination Valve
1	R3160X	#78 Carry-over Orifice Hood, LP	1	R3161X	#71 Carry-over Orifice Hood, Nat

C011-G

Full Size Gas Convection Oven

30 Pine Street • New Rochelle • New York • 10801

914 / 576 - 0200

914 / 576 - 0605 fax

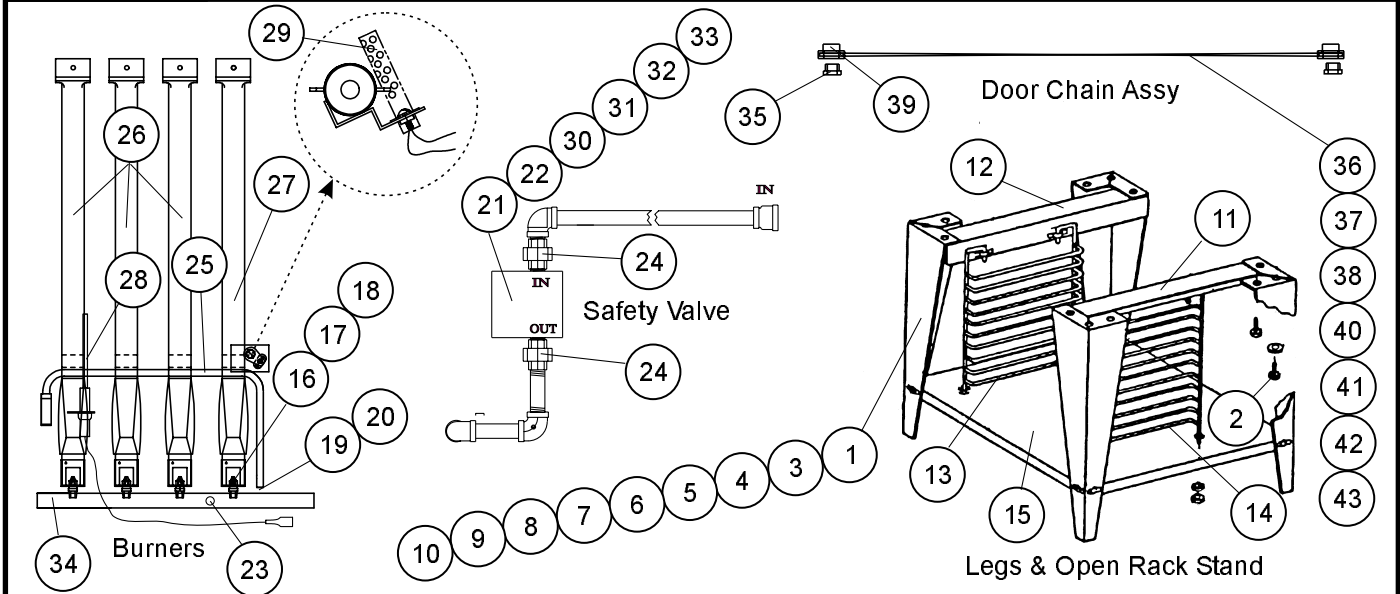
1 - 800 - 431 - 2745 US & Canada

www.bakerspride.com web address



Figure B

Burners / Valve / Door Chain / Legs



Item	Part #	Description	Item	Part #	Description
1	S1050Y	30" Leg (Set of 4)	23	N3068P	1/8" Pressure Tap Nozzle Assy
2	Q4017V	Leg Bolt, Set (For 4 Legs)	24	N3026A	1/2" Union
3	S1217Y	24 1/2" S/S Leg (Set/4) Used w/Casters	25	R3158A	Carry-Over
4	S1252T	24 1/2" S/S Leg (each) Used w/Casters	26	L5090A	Burner (3)
5	S1081X	Casters, 4" (Set of 4)	27	L5091X	Burner w/Ignitor Bracket (1)
6	S1022X	Caster, 4" (No Lock), each	28	M1323X	Flame Rod (Flame Sensor)
7	S1023X	Caster, 4" (w/Lock), each	29	M2140X	Igniter, 24V
8	K1357E	Mounting Plate (for Casters) each	30	R3164X	Combination Valve (Natural)
9	S1049Y	6" Bullet Legs (Set of 4)	31	R3165X	Combination Valve (LP)
10	S1049A	6" Bullet Legs (each)	32	R3178P	Combination Valve, CE (Natural)
11	E3148X	Top Right Angle, Open Rack Stand	33	R3179P	Combination Valve, CE (LP)
12	E3149X	Top Left Angle, Open Rack Stand	34	R1116A	Manifold
13	T3051X	Left Rack Support, Open Rack Stand	35	S3228A	Flange Bearing (4)
14	T3052X	Right Rack Support, Open Rack Stand	36	S3231X	Door Chain Assy (Complete)
15	T8075X	Bottom Shelf w/Hdwr, Open Rack Stand	37	S3226A	Door Chain Rod (Short)
16	R3180A	#48 Burner Orifice Spud (Nat)	38	S3227A	Door Chain Rod (Long)
17	R3175A	#57 Burner Orifice Spud (LP)	39	S3145X	Sprocket
18	R3176A	1.15mm Burner Orifice Spud CE (LP)	40	S3112X	Roller Chain #35
19	R3161X	#71 Carry-Over Orifice Hood (Nat)	41	S3224A	Chain Connection Link #41
20	R3160X	#78 Carry-Over Orifice Hood (LP)	42	S3223A	Turnbuckle 1/4-20x3"
21	M1233X	LP Kit (for Combination Valve)	43	Q2039A	1/4-20 Hex Nut, Left Hand Thread (2)
22	M1343A	Natural Kit (for Combination Valve)			

Steam Option (Not Shown)

N/S	M1114X	Solenoid Valve	N/S	N5815A	1/4 Tubing x 9"
N/S	M1115X	Coil (For Solenoid Valve)	N/S	N1019X	Steam Injection Nozzle
N/S	N3039A	1/8 Brass Coupling	N/S	M1175X	Steam Timer, 115V
N/S	N3040A	1/8 Brass Elbow	N/S	M1231A	Steam Timer, 208/240V (Export)
N/S	N5831A	1/8x4" Brass Nipple	N/S	M1176X	Steam Potentiometer
N/S	N3041A	1/8NPT-1/4 Compression Fitting	N/S	M1049X	Momentary Switch (Steam)
N/S	N5814A	1/8x2 3/8 Nipple			