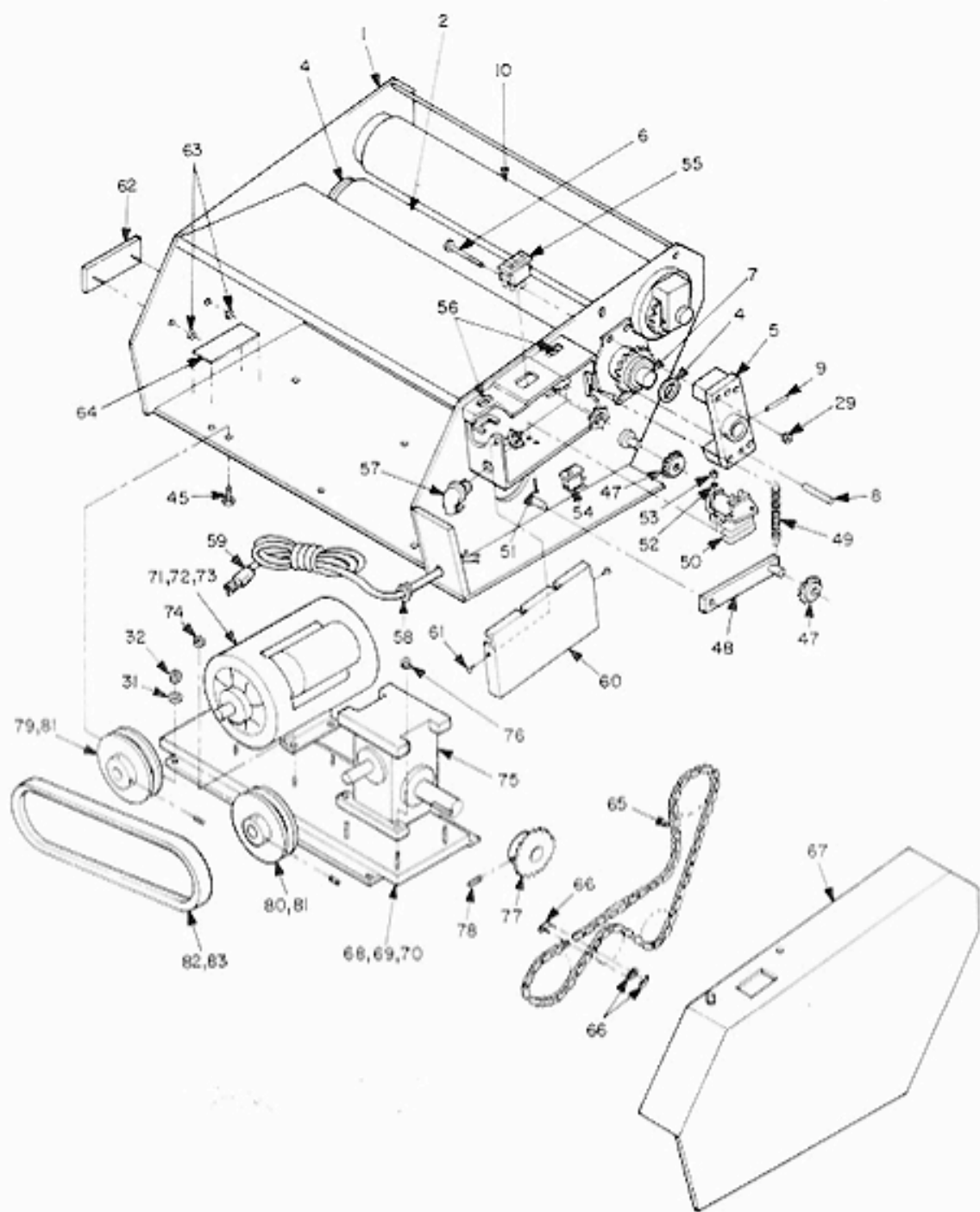
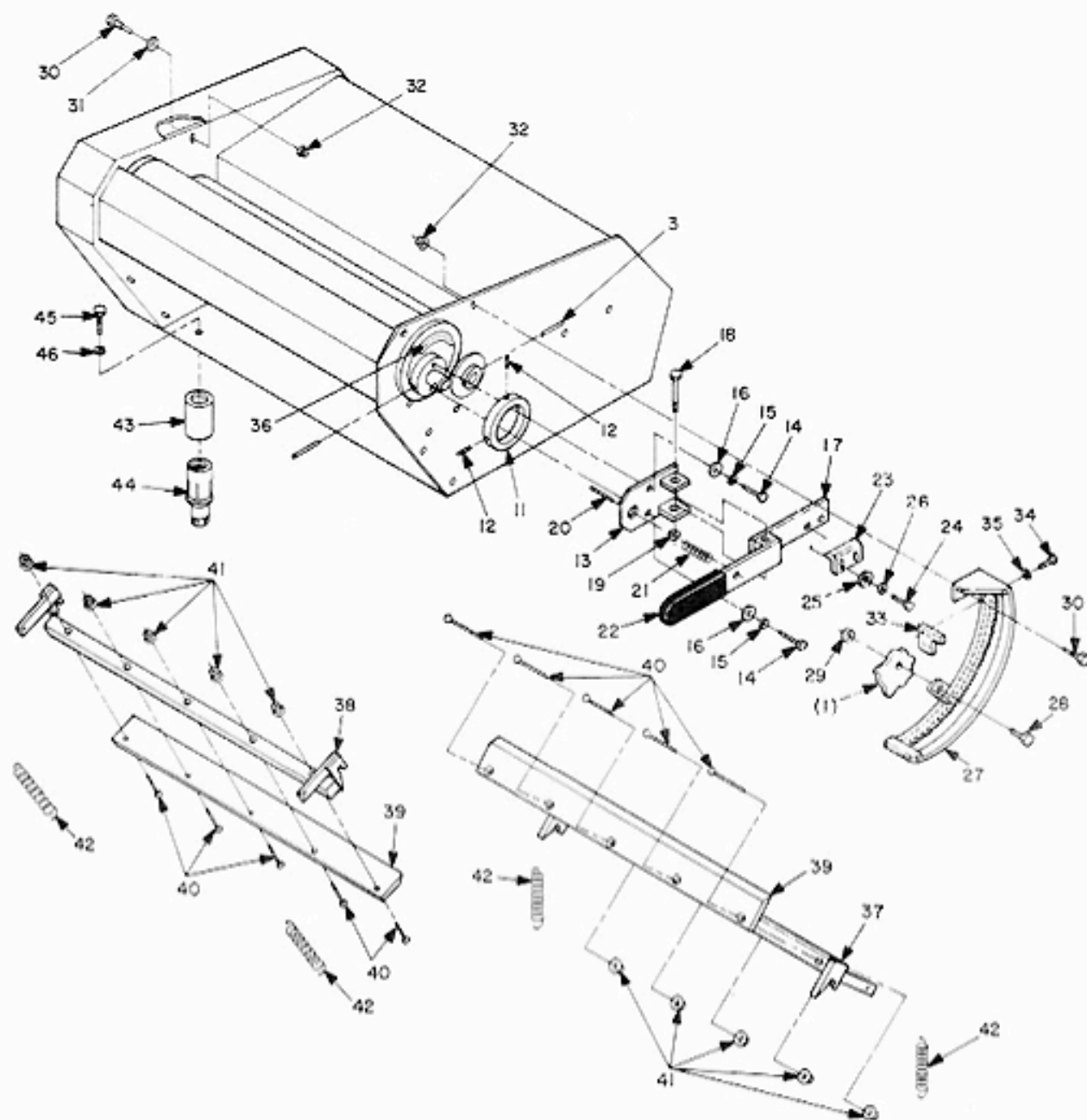


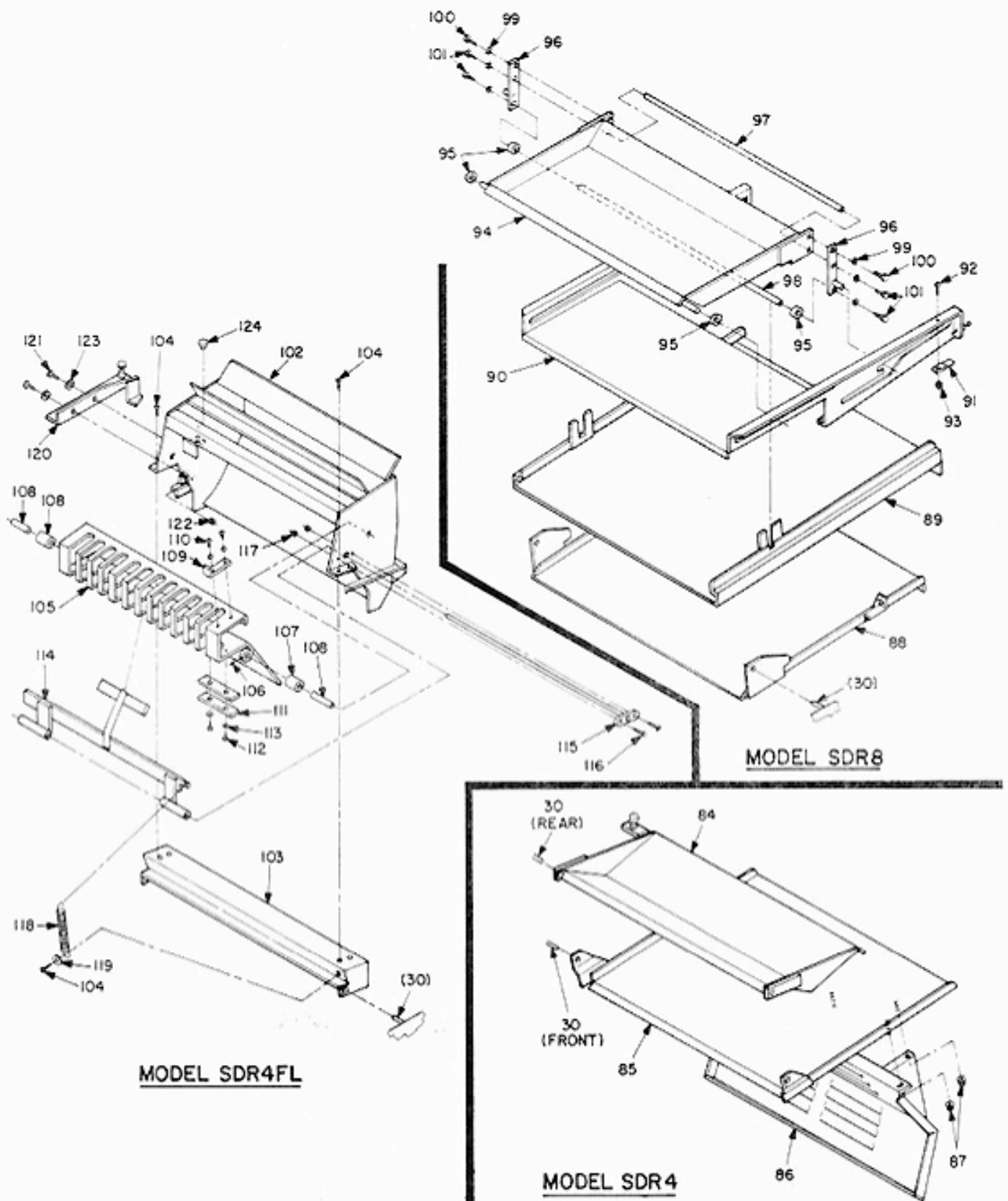
REPLACEMENT PARTS



REPLACEMENT PARTS



REPLACEMENT PARTS — INFEED SECTION





DOUGH ROLLER

MODELS SDR4, SDR4FL, and SDR8

REPLACEMENT PARTS

ITEM NO.	DESCRIPTION	PART NO.	ITEM NO.	DESCRIPTION	PART NO.
1.	FRAME S.A.	E4427-00	63.	PUSH NUT	P6050-01
2.	STATIONARY ROLLER S.A.	D5396-00	64.	SPEC. PLATE	P9201-73
3.	ROLL PIN 3/16 DIA. x 1-5/8 LG	P8060-56	65.	CHAIN #40 x 43-3/4 LG.	P9700-03
4.	THRUST BEARING #TB1228	P8510-28	66.	CHAIN CONNECTOR #40 STRAIGHT	P9700-08
5.	ROLLER BLOCK S.A.	B11585-00	67.	SIDE COVER	E4430-00
6.	SCREW 1/4-20 x 2-1/4 HEX CAP	P8025-78	68.	DRIVE BASE S.S.A. (SDR4 & 4FL) STD.	D5129-00
7.	SHAFT	B11592	69.	DRIVE BASE S.S.A. (SDR8 ONLY)	D5129-02
8.	DOWEL PIN 1/4 DIA. x 2" LG.	P8060-60	70.	DRIVE BASE S.S.A (SDR4 & 4FL) OPT.	D5129-04
9.	ROLL PIN 3/16 DIA. x 1-1/4 LG.	P8080-43	71.	DISCONTINUED	
10.	ADJUSTABLE ROLLER S.A.	D5408-00	72.	MOTOR 3/4 HP (SDR8 ONLY)	P8110-43
11.	COLLAR	B12044-00	73.	MOTOR 1/2 HP (SDR4 & 4FL)	P8110-54
12.	SET SCREW 1/4-20 x 1/4 LG.	P8045-09	74.	LOCKNUT #31-WLF-51618	P8050-74
13.	HANDLE MOUNT S.A.	B12069-00	75.	REDUCER	P8200-14
14.	SCREW 1/4-20 x 3/4 HEX CAP	P8025-08	76.	LOCKNUT #31-WLF-3816	P8050-78
15.	L.W. 1/4 MED SPLIT	P8055-03	77.	SPROCKET	B11686-00
16.	WASHER 1/4 PLAIN	P8055-06	78.	SET SCREW 1/4-20 x 5/16 SOCK. H.D.	P8045-15
17.	HANDLE S.A.	C8951-00	79.	MOTOR PULLEY (SDR4 & 4FL ONLY)	P8500-33
18.	SCREW 1/4-20 x 1-3/4 HEX CAP	P8025-42	80.	REDUCER PULLEY (SDR4 & 4FL ONLY)	P8500-33
19.	STOP NUT 1/4-20	P8050-59	81.	PULLEY (SDR8 ONLY)	P8500-11
20.	SCREW	B12075-00	82.	"V" BELT (SDR4 & 4FL ONLY)	P8700-03
21.	SPRING	P9500-19	83.	"V" BELT (SDR8 ONLY)	P8700-06
22.	HANDLE GRIP	P9312-10	84.	FLOUR PAN S.A. (SDR4 ONLY)	D5126-00
23.	PAWL	B8402-01	85.	INFEED PAN S.A. (SDR4 & 4FL ONLY)	D5127-00
24.	SCREW 1/4-20 x 1/2 HEX CAP	P8025-03	86.	MOTOR COVER S.A.	D5125-00
25.	WASHER 1/4 PLAIN	P8055-06	87.	LOCKNUT #31-WLF-1024	P8050-71
26.	L.W. 1/4 MED. SPLIT	P8055-03	88.	INFEED PAN S.A. (SDR8 ONLY)	E4434-00
27.	INDEX PLATE S.A.	C8952-00	89.	DOUGH SLIDE S.A. (SDR8 ONLY)	E4433-00
28.	SCREW 1/4-20 x 1/2 HEX CAP	P8025-03	90.	GUARD S.A. (SDR8 ONLY)	E4432-00
29.	LOCKNUT #31-WLF-1420	P8050-76	91.	SPRING (SDR8 ONLY)	B12078-00
30.	PIVOT	B12041-00	92.	SCREW #10-24 x 3/8 TRIM HEX M.S.	P8020-50
31.	WASHER 3/8 PLAIN	P8055-16	93.	LOCKNUT #31-WLF-1024	P8050-71
32.	LOCKNUT #31-WLF-3816	P8050-78	94.	FLOUR PAN S.A. (SDR8 ONLY)	C8785-01
33.	HANDLE STOP	B12072-00	95.	COLLAR 3/8 COMM	P8055-08
34.	SCREW 1/4-20 x 3/8 RD. M.S.	P8025-34	96.	GUIDE ARM S.A. (SDR8 ONLY)	B12050-00
35.	L.W. 1/4 MED. SPLIT	P8055-03	97.	TIE BAR (SDR8 ONLY)	B11826-04
36.	ECCENTRIC DECAL	P9201-45	98.	TIE BAR (SDR8 ONLY)	B11826-03
37.	SCRAPER BAR S.A. #1	C8918-00	99.	L.W. #10 MED SPLIT	P8055-04
38.	SCRAPER BAR S.A. #2	C8919-00	100.	SCREW #10-24 x 1/2 TRIM HEX M.S. S.S.	P8020-82
39.	SCRAPER S.A. #1 & #2	P9313-48	101.	SCREW #10-24 x 3/4 TRIM HEX M.S. S.S.	P8020-25
40.	THRED STUD 1/4-20	P9301-38	102.	HOPPER S.S.A	E4453-00
41.	LOCKNUT 31-WLF-1420	P8050-76	103.	HAND GUARD	D5138-00
42.	SPRING	P9500-50	104.	SCREW #10-24 x 3/8 TYPE 1 PAN TAP S	P8020-34
43.	LEG S.A.	B11595-00	105.	DOUGH FLAP S.S.A.	E4446-00
44.	LEG INSERT	P9300-13	106.	SCREW #10-32 x 3/16 HEX SOCK SET	P8045-36
45.	SCREW 3/8-16 x 1 HEX CAP	P8035-10	107.	SPACER	B11638-00
46.	L.W. 3/8 MED. SPLIT	P8055-10	108.	SHAFT	B11637-00
47.	SPROCKET S.A.	B12031-00	109.	STOP	B12083-00
48.	IDLER ARM S.A.	B12033-00	110.	SCREW #8-32 x 1/4 TYPE 1 PAN TAP S	P8015-11
49.	SPRING	P9500-20	111.	WEIGHT	B11682-00
50.	RELAY	P9131-23	112.	SCREW #10-24 x 1/2 TRIM HEX TAP S	P8020-11
51.	SCREW #8-32 x 3/8 RD. M.S.	P8015-03	113.	L.W. #10 INTERNAL TOOTH	P8050-17
52.	L.W. #8 INTERNAL	P8055-32	114.	PUSHER S.S.A.	C8960-00
53.	NUT #8-32	P8050-13	115.	PIVOT ROD S.S.A	B12087-00
54.	MICROSWITCH	P9101-23	116.	SCREW #10-24 x 3/8 TRIM HEX M.S.	P8020-04
55.	SWITCH	P9101-29	117.	LOCKNUT #31-WLF-1024	P8050-71
56.	SPEED GRIP NUT	P8050-79	118.	SPRING	P9500-50
57.	45° CONNECTOR	P9110-17	119.	WASHER #10 PLAIN S.S.	P8055-05
58.	STRAIN RELIEF BUSHING	P9110-43	120.	LOCK DOWN ANGLE S.S.A	B12092-00
59.	CORDSET	P9120-38	121.	SCREW 1/4-20 x 5/8 HEX CAP	P8025-13
60.	WIRING BOX COVER	C8929-00	122.	LOCKNUT #31-WLF-1420	P8050-76
61.	SCREW #10-24 x 3/8 RD. TAP S	P8020-32	123.	WASHER 1/4" PLAIN	P8055-06
62.	NAME PLATE	P9200-95	124.	GROMMET	P9600-41

SDR4FL ONLY

IMPORTANT: WHEN ORDERING REPLACEMENT PARTS...PLEASE SUPPLY MODEL AND SERIAL NUMBER...ELECTRICAL REQUIREMENTS...TYPE OF GAS...ITEM NUMBER...DESCRIPTION AND PART NUMBER...PART ORDERS THAT ARE SHIPPED DUE TO LACK OF ABOVE INFORMATION ARE SUBJECT TO RESTOCKING CHARGE. NO MERCHANDISE CAN BE RETURNED WITHOUT WRITTEN PERMISSION.