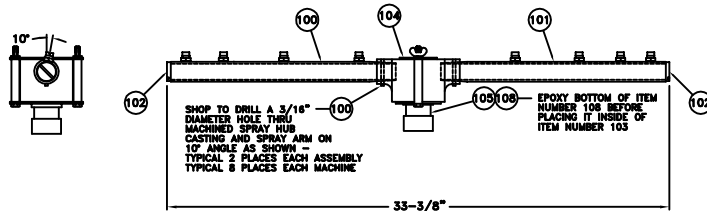
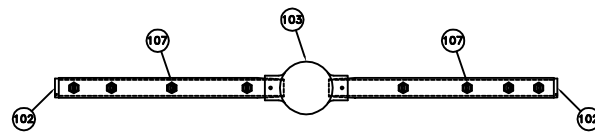
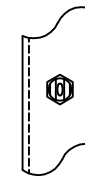


BILL OF MATERIAL FOR ALL 4 WASH ARM ASSEMBLIES				
ITEM	QUANTITY	PART NUMBER	DRAWING NUMBER	DESCRIPTION
100	4	A10166	KS48-12-001	WASH ARM WITH DRIVE HOLE
101	4	A10167	KS48-12-002	WASH ARM WITHOUT DRIVE HOLE
102	8	P10310	KS48-12-003	SPRAY ARM END PLUG
103	4	H10306	KS48-12-004	MACHINED SPRAY HUB CASTING
104	4	G10221	KS48-12-006	SPRAY HUB CLAMP ASSEMBLY
105	REFERENCE	H10307-A	KS48-18	SHORT HUB ASSEMBLY
106	8	P11304		McMASTER-CARR PART NUMBER 92363A371 3/16" DIAMETER X 1-3/4" LONG
107	32	H10104		STAINLESS STEEL SPRING PIN "SPRAYING SYSTEMS" PART NUMBER H 1/4 U-SS 5040 STAINLESS
108	4	G10120	KS48-12-010	STEEL VEE JET NOZZLE RUBBER GASKET



SPRAY ARM ASSEMBLY

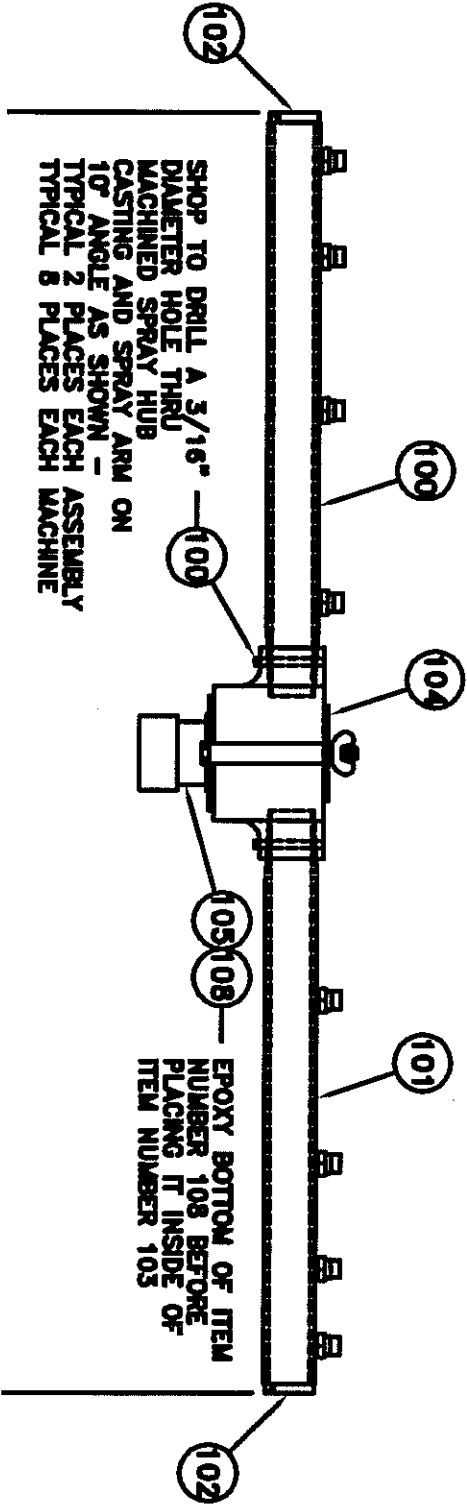
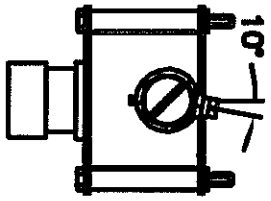
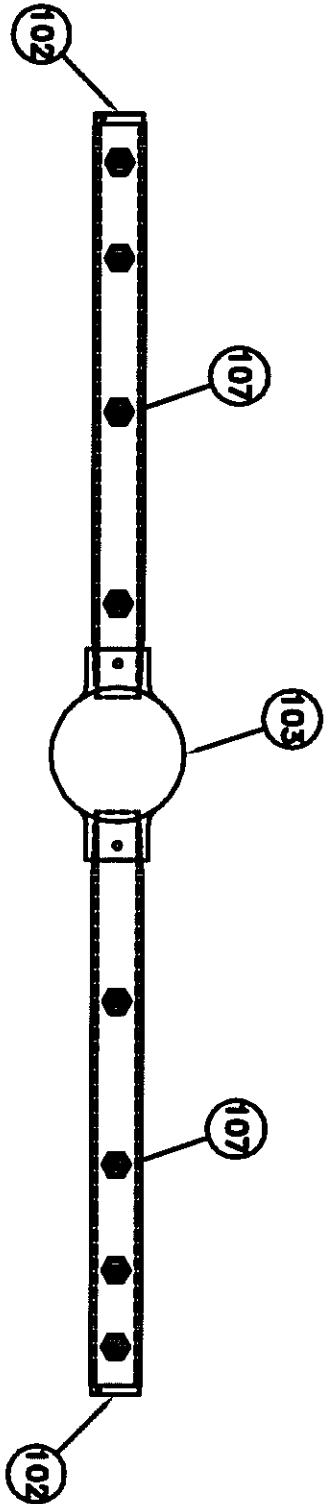


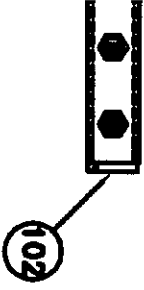
NOZZLE ARRANGEMENT DETAIL

REVISIONS	DATE	BY
A		
B		
C		
D		
E		
F		
G		

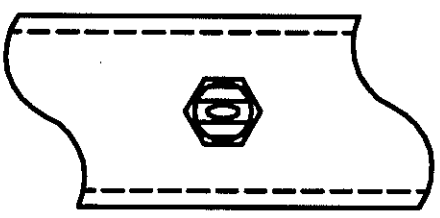
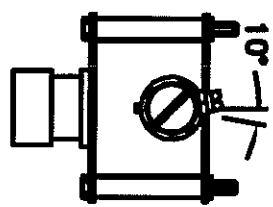
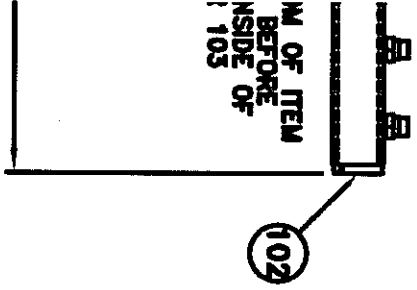
<small>INTEGRITY OF A-F ENGINEERING CORPORATION SINCE 1964</small> <b>SPRAY ARM ASSEMBLY</b>	
FOR	SCALE NONE
P.O.#	A-F ORDERS
DATE 03-28-98	DRAWN BY JJL_gfd
	DRAWING NUMBER KS48-12






BILL OF MATERIAL FOR ALL 4 WASH ARM ASSEMBLIES

ITEM	QUANTITY	PART NUMBER	DRAWING NUMBER	DESCRIPTION
100	4	A10166	KS48-12-001	WASH ARM WITH DRIVE HOLE
101	4	A10167	KS48-12-002	WASH ARM WITHOUT DRIVE HOLE
102	8	P10310	KS48-12-003	SPRAY ARM END PLUG
103	4	H10508	KS48-12-004	MACHINED SPRAY HUB CASTING
104	4	C10221	KS48-12-006	SPRAY HUB CLAMP ASSEMBLY
105	REFERENCE	H10307-A	KS48-18	SHORT HUB ASSEMBLY
106	8	P11304		"MAMASTER-CARR" PART NUMBER 92363A571 3/16" DIAMETER X 1-3/4" LONG
107	32	N10104		STAINLESS STEEL SPRING PIN "SPRAYING SYSTEMS" PART NUMBER
				H 1/4 U-SS 5040 STAINLESS
				STEEL VEE JET NOZZLE
108	4	G10120	KS48-12-010	RUBBER GASKET



**NOZZLE ARRANGEMENT DETAIL**

REVISIONS	DATE	BY
A		
B		
C		
D		


**AVEY**  
 DIVISION OF  
 SPRAY ARM ASSEMBLY  
 4-1" LONGSTROKE CONCENTRATOR, QRTZ 480-11  
 TITLE