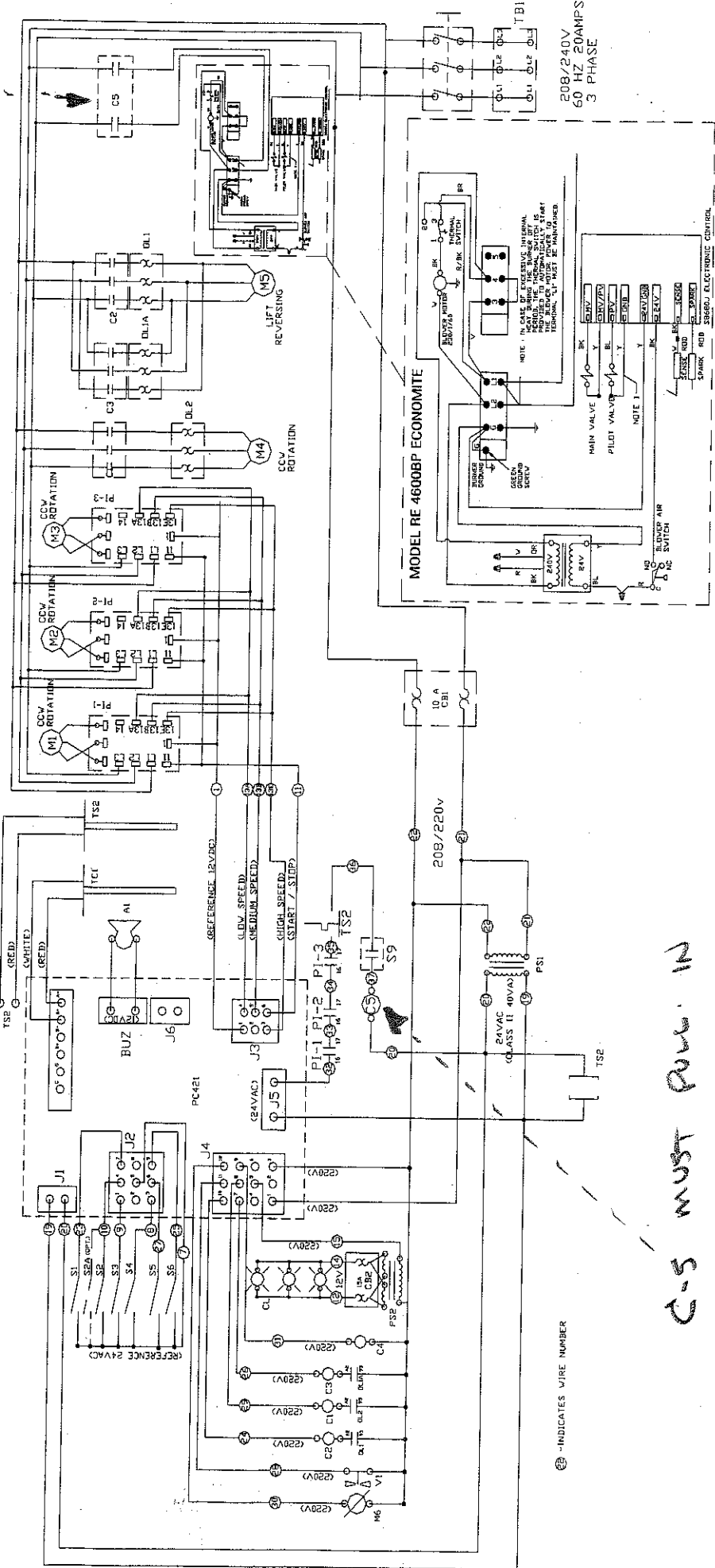


**C-5 CONDENSERS FOR BURNER VOLTAGE**

**LEGEND**

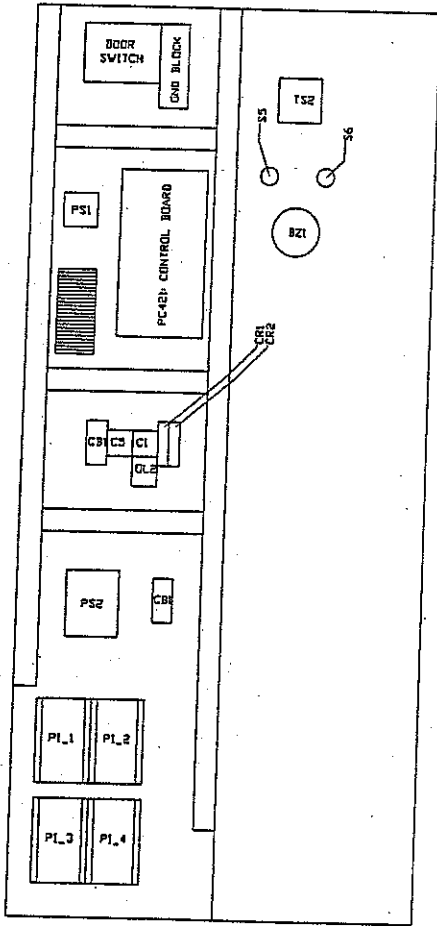
- S1 DOOR SWITCH
- S2 ROTATION ALIGNMENT SWITCH
- S3 UP LIMIT SWITCH
- S4 DOWN LIMIT SWITCH
- S5 STEAM INITIATE SWITCH
- S6 VENT DAMPER SWITCH
- S8 HOOD DRAFT PROVIDING SWITCH
- S9 HOOD DRAFT PROVIDING SWITCH
- C1 ROTATION CONTACTOR
- C2 RACK LOWER CONTACTOR
- C3 RACK RAISE CONTACTOR
- C4 HOOD EXHAUST FAN CONTACTOR
- C5 BURNER CONTACTOR
- CB1 (10A) 240 V CIRCUIT BREAKER
- CB2 (15A) 240V CIRCUIT BREAKER
- M1, M2, M3 FAN MOTORS (CCW)
- M4 ROTATION MOTOR
- M5 RACK RAISE/LOWER MOTOR
- M6 VENT DAMPER ACTUATOR
- TB1 MAIN TERMINAL BLOCK
- TS2 AUX CONTROL THERMOSTAT
- TC1 TYPE "J" THERMOCOUPLE NON-GND.
- TC2 "J" THERMOCOUPLE NON-GND
- TC3 STEAM READY MONITOR
- PC241 SOLID STATE LOGIC RELAY BOARD
- PI-1, PI-2, PI-3, FAN MTR. PHASE INVERTERS
- DL1 LOWER/DLIA LIFT MOTOR OVERLOADS 2.5A
- DL2 ROTATION MOTOR OVERLOAD 2.5A
- CL BAKE CHAMBER LIGHTS, (3) 12VAC 50WATTS
- PS1 CLASS II TRANSFORMER 220/24VAC 40VA
- PS2 GEN PURPOSE TRANSFORMER 220/12VAC 150VA
- B GAS BURNER
- D1 20A DISCONNECT SWITCH
- A1 5VDC TIMER ALARM
- V1 STEAM SOLENOID VALVE



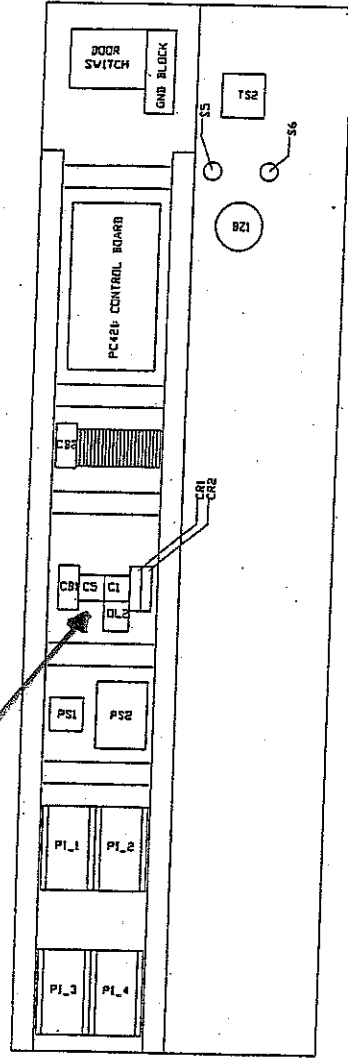
② - INDICATES WIRE NUMBER

**C-5 MUST FULL IN TO FIRE BURNER**

208/240V  
60 HZ 20AMPS  
3 PHASE



DOUBLE RACK OVEN COMPONENT DIAGRAM



SINGLE RACK OVEN COMPONENT DIAGRAM