



**REPLACEMENT PARTS CATALOG**

**W-43V**

**COUNTERTOP WARMER 4/3 SIZE**

**W-43V P/N 57599 - 120V, 1500W**

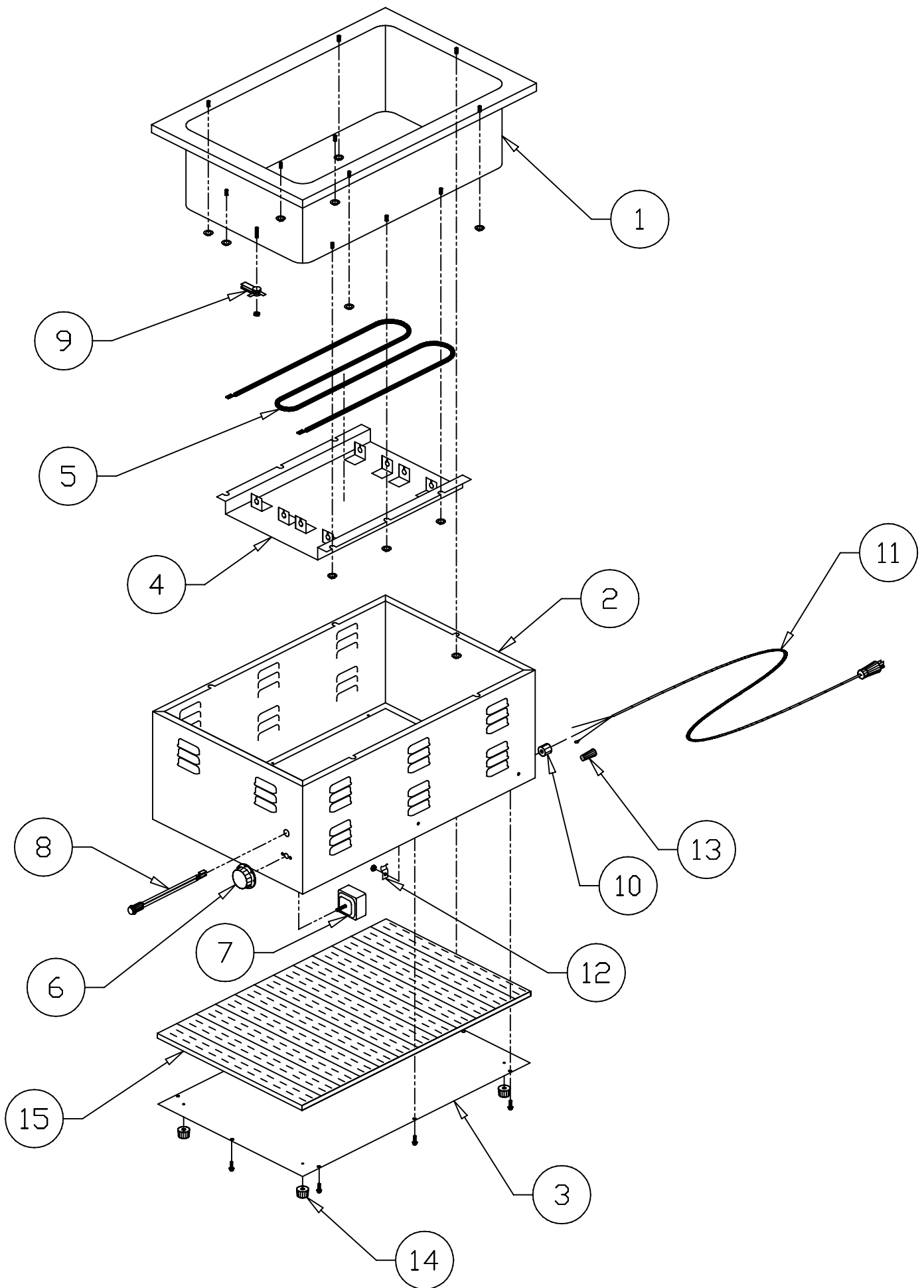
**W-43V P/N 57599-EM – 240V, 1600W**

## W-43V COUNTERTOP WARMER 4/3 SIZE

ITEM NUMBER	STOCK NUMBER	DESCRIPTION
1	57589	PAN ASSEMBLY
2	57588	WRAPPER ASSEMBLY
3	57573	BOTTOM COVER
4	56506	REFLECTOR PAN
5	56322	ELEMENT 120V-1500W
	55441	ELEMENT 240V-1600W
6	55817	KNOB, INFINITE CONTROL
	55826	KNOB, INFINITE CONTROL NUMBERS ONLY
7	55564	INFINITE CONTROL 120V
	87053	INFINITE CONTROL 240v
8	56530	INDICATOR LIGHT AMBER
	56633-01	INDICATOR LIGHT GREEN
9	69106	LIMITING THERMOSTAT
10	89101	STRAIN RELIEF BUSHING STRAIGHT
	89151	STRAIN RELIEF BUSHING 90 DEGREE
11	55970	POWER CORD
	83204	POWER CORD CONT. EUROPE
12	89120	JIFFY CLIP
13	89475	SET SCREW WIRE NUT
14	55768	RUBBER FOOT ASSEMBLY
15	60112	INSULATION

### ITEMS NOT SHOWN

89054	6-32 KEPS NUT
89073	#8 x 1/2" SHEET METAL SCREW
88961	10-24 GREEN HEX NUT
89025	10-24 SPEED NUT
89061	10-24 HEX NUT
89059	#10 EXT. LOCKWASHER



# W3'S WIRING DIAGRAM

AMERICAN PERMANENT WARE, INC.  
729 THIRD AVENUE  
DALLAS, TX. 75226

