



REPLACEMENT PARTS CATALOG

W-3V

COUNTERTOP WARMER

W-3V P/N 54812 - 120V, 1200W

W-3V P/N 54822 - 240V, 1200W

APW / Wyott

FOOD SERVICE EQUIPMENT CO
DALLAS, TX 75226

W-3V COUNTERTOP WARMER

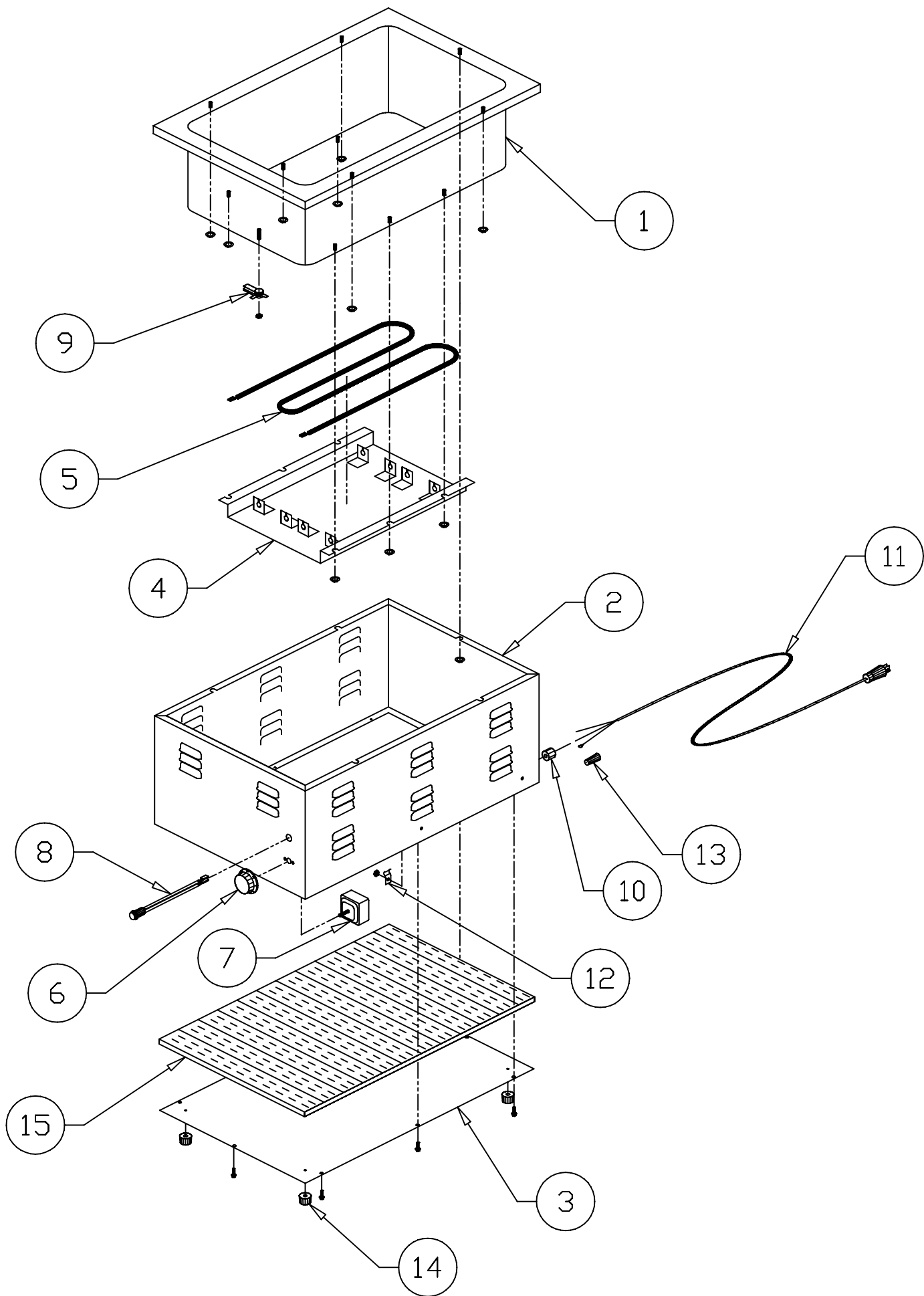
ITEM STOCK

NO. NO. DESCRIPTION

1	54815	PAN ASSEMBLY
2	54813	WRAPPER ASSEMBLY
3	54816	BOTTOM COVER
4	56506	REFLECTOR PAN
5	55446	ELEMENT 120V-1200W
	55440	ELEMENT 240V-1200W
6	55817	KNOB, INFINITE CONTROL US
	55826	KNOB INFINITE CONTROL CE
7	55564	INFINITE CONTROL 120V
	87053	INFINITE CONTROL 240V
8	56530	INDICATOR LIGHT AMBER
	56633	INDICATOR LIGHT GREEN
9	69106	LIMITING THERMOSTAT
10	89101	STRAIN RELIEF BUSHING US
	89112	STRAIN RELIEF BUSHING CE
11	55947	POWER CORD 120V US
	83204	POWER CORD 230V CONT. EUROPE CE
12	89120	JIFFY CLIP
13	89475	SET SCREW WIRE NUT
14	55768	RUBBER FOOT ASSEMBLY
15	54817	INSULATION

ITEMS NOT SHOWN

89054	6-32 KEPS NUT
89073	#8 x 1/2" SHEET METAL SCREW
88961	10-24 GREEN HEX NUT
89025	10-24 SPEED NUT
89061	10-24 HEX NUT
89059	#10 EXT. LOCKWASHER



W3'S WIRING DIAGRAM

AMERICAN PERMANENT WARE, INC.
729 THIRD AVENUE
DALLAS, TX. 75226

