



REPLACEMENT PARTS CATALOG

HFW-2, HFW-3, HFW-4, HFW-5, HFW-6

**INSULATED TOP MOUNT HOT FOOD WELLS
INFINITE CONTROL MODELS**

HFW-2D P/N: 56142 - 240V-1600W

HFW-2 P/N: 54962 - 240V-1600W

HFW-3D P/N: 56143 - 240V-1600W

HFW-3 P/N: 54963 - 240V-1600W

HFW-4D P/N: 56144 - 240V-1600W

HFW-4 P/N: 54964 - 240V-1600W

HFW-5D P/N: 56145 - 240V-1600W

HFW-5 P/N: 54965 - 240V-1600W

HFW-6D P/N: 56146 - 240V-1600W

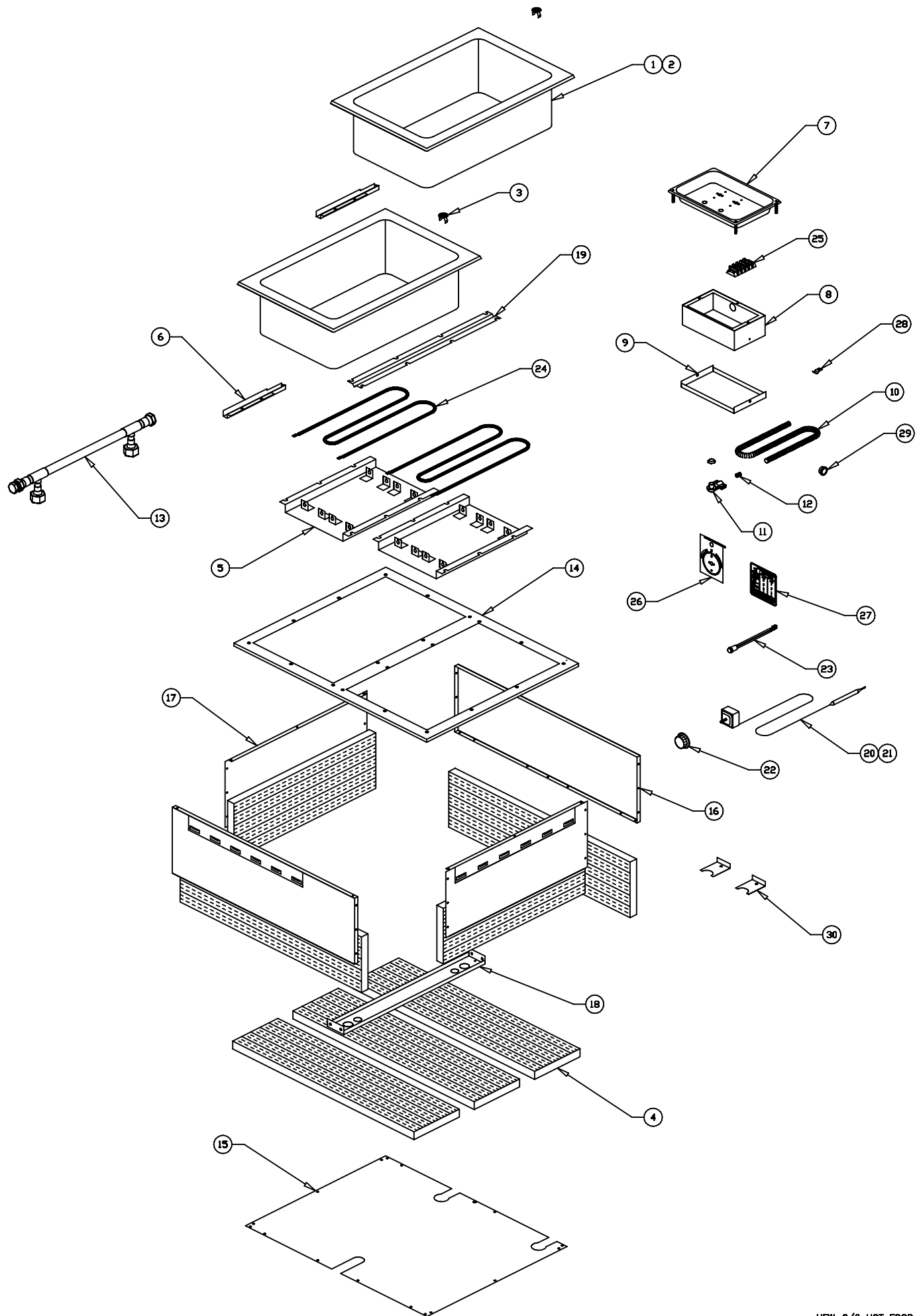
HFW-6 P/N: 54966 - 240V-1600W

FOR 72" THERMOSTAT ADD SUFFIX -72 TO MODEL AND STOCK NUMBER

HFW-2 THRU HFW-6 MULTI WELLS INFINITE CONTROL MODELS

ITEM NO	STOCK NO	DESCRIPTION	ITEM NO	STOCK NO	DESCRIPTION
1	55071	WELL PAN NO DRAIN	24	55441	ELE. 208-240V 1200-1600W
2	56037	WELL PAN W/DRAIN	25	30201	TERMINAL BLOCK
3	56655	DRAIN STRAINER	26	56529	INCR./DECR. PLATE
4	60150	1" X 7" X 48" INSULATION	27	56542	DIAL PLATE
5	56506	REFLECTOR PAN	28	89120	JIFFY CLIP
6	56039	CAPILLARY COVER F/T'STATS	29	89184	7/8" HOLE BUSHING
7	55055	CONTROL RECESSED BEZEL	30	55062	HOLE COVER
7A	56041	CONTROL RECESSED BEZEL		89073	#8 X 1/2 SHT METAL SCREW
8	55057	CONDUIT BOX		88961	10-24 GREEN HEX NUT
8A	55063	CONDUIT BOX		89061	10-24 HEX NUT
9	55065	CONDUIT BOX COVER		89025	10-24 SPEED NUT
9A	55066	CONDUIT BOX COVER		89071	#10 FLAT WASHER
10	55099	3/4" CONDUIT 24" LONG		89059	#10 EXT. LOCKWASHER
11	55058	90 DEGREE CONDUIT CONNECTOR		88993	10-32 X 3/8" TR. HD SCREW
12	55059	ANTI-SHORT BUSHING		89068	1/4" FLAT WASHER
13	56186	2 WELL DRAIN MANIFOLD ASSY			
13A	56185	3 WELL DRAIN MANIFOLD ASSY			
13B	56184	4 WELL DRAIN MANIFOLD ASSY			
13C	56183	5 WELL DRAIN MANIFOLD ASSY			
13D	56182	6 WELL DRAIN MANIFOLD ASSY			
14	56206	2 WELL TOP PLATE			
14A	56351	3 WELL TOP PLATE			
14B	56377	4 WELL TOP PLATE			
14C	55023	5 WELL TOP PLATE			
14D	56166	6 WELL TOP PLATE			
15	56181	2 WELL BOTTOM COVER			
15A	56178	3 WELL BOTTOM COVER			
15B	56175	4 WELL BOTTOM COVER			
15C	56173	5 WELL BOTTOM COVER			
15D	56172	6 WELL BOTTOM COVER			
16	56180	2 WELL FRONT OR BACK COVER			
16A	56177	3 WELL FRONT OR BACK COVER			
16B	56174	4 WELL FRONT OR BACK COVER			
16C	56171	5 WELL FRONT OR BACK COVER			
16D	56170	6 WELL FRONT OR BACK COVER			
17	56050	END COVER - ALL			
18	56048	CONDUIT BRACKET			
19	56067	WELL BRACE			
20	56527	THERMOSTAT 36" CAPILLARY			
21	56540	THERMOSTAT 72" CAPILLARY			
22	56528	KNOB, THERMOSTAT			
23	56530	INDICATOR LIGHT			

APW / WYOTT
FOOD SERVICE EQUIPMENT CO.
DALLAS, TX 75226

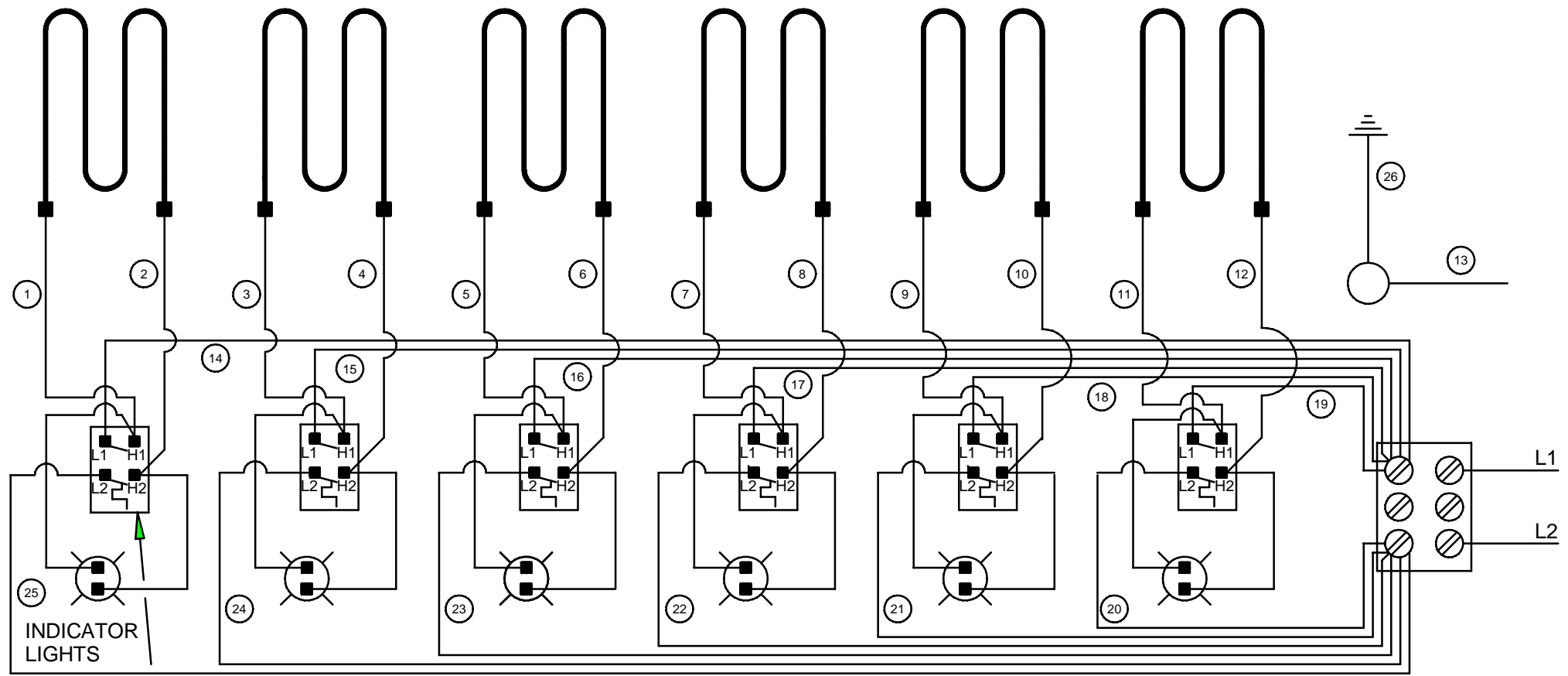


HFW-2/6 WIRING DIAGRAM

AMERICAN PERMANENT WARE, INC.
729 THIRD AVENUE
DALLAS, TX. 75226

CAP BULB THERMOSTAT CONFIGURATION

HEATING ELEMENTS



THERMOSTAT

