



**BT-15
CONVEYOR TOASTERS**

1-5/8 INCH OPENING UNITS

PN BT15C - 208V, 60HZ

PN BT15E - 240V, 60HZ

PN BT15F - 240V, 50HZ

2 INCH OPENING UNITS

PN BT15C-2 - 208V, 60HZ

PN BT15E-2 - 240V, 60HZ

PN BT15F-2 - 240V, 50HZ

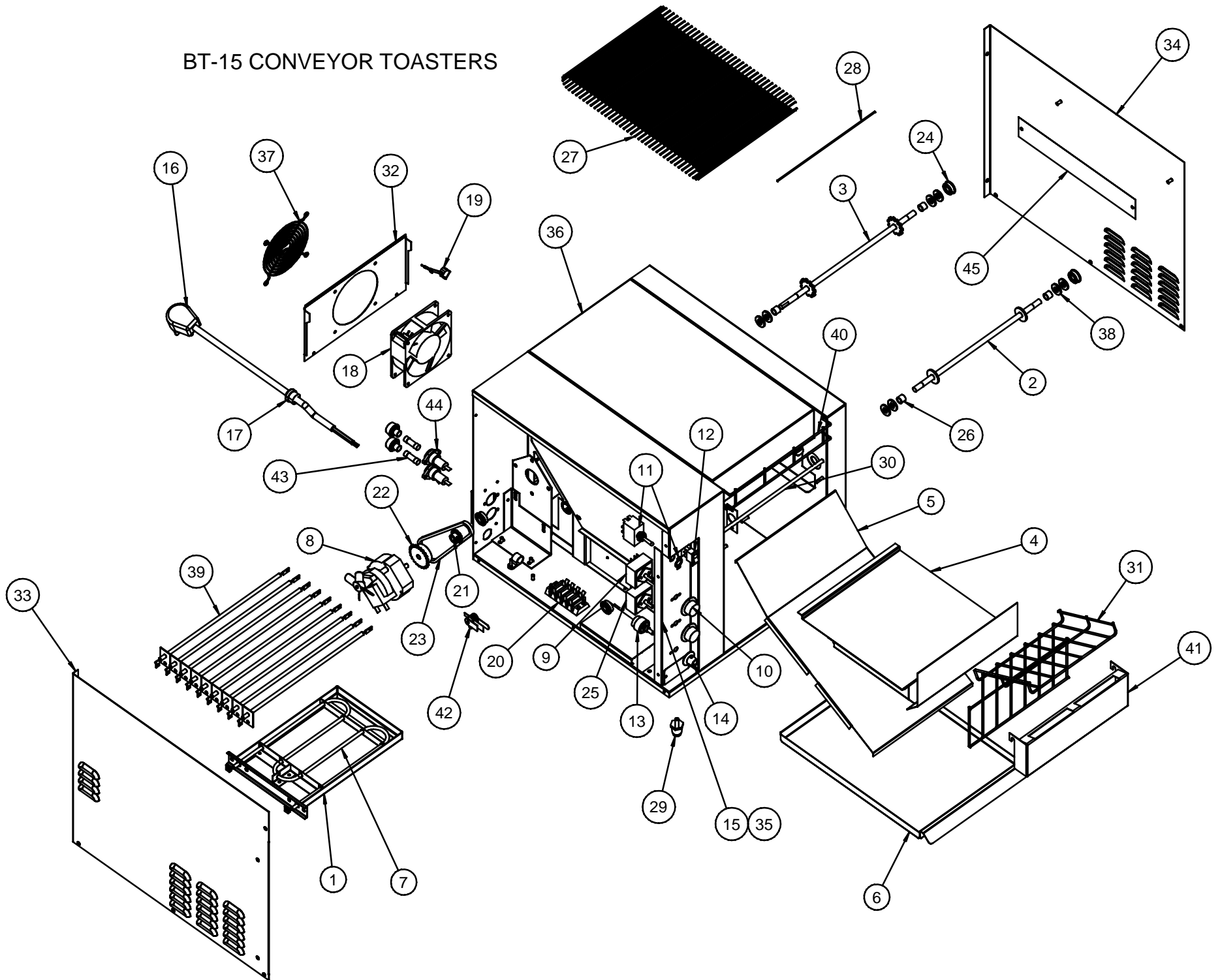
3 INCH OPENING UNITS

PN BT15C-3 - 208V, 60HZ

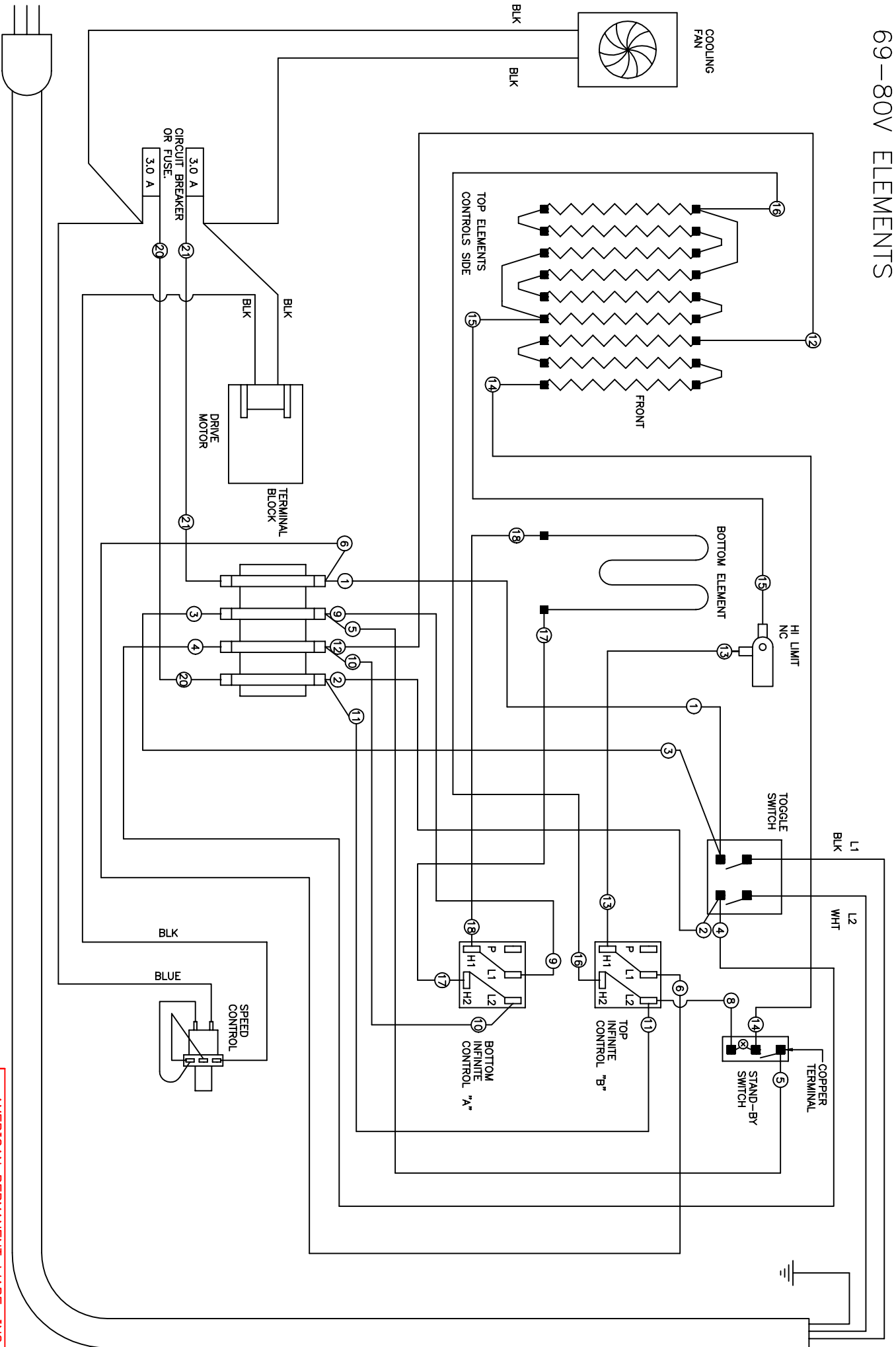
PN BT15E-3 - 240V, 60HZ

PN BT15F-3 - 240V, 50HZ

BT-15 CONVEYOR TOASTERS



BT15 4600W 208-240V WITH
69-80V ELEMENTS



TOLERANCES		MATERIAL		WIRE DIAGRAM BT-15	
UNLESS OTHERWISE SPECIFIED		-		DRAWN BY JTG DATE 4/15/96 APPROVED	
4 PLCS. DECIMAL ± .010		BLANK SIZE	SHEAR SIZE	DATE	DATE
3 PLCS. DECIMAL ± .050		WEIGHT	GRAIN	REV. 4	82838WD
2 PLCS. DECIMAL ± .080		PLASTIC		REV. C	
FRACTIONAL ± 1/32		REVISIONS			
ANGULAR ± 1/2°					

12/11/00 CHG JUMPS ON ELE. MOVE WIRE 12 & 15 ON ELE.
 10/13/98 SPLIT POWER WIRES, L2 NOW BLUE
 7/18/96 ADDED CIRCUIT BREAKERS

AMERICAN PERMANENT WARE, INC
 729 THIRD AVE., DALLAS, TEXAS 75226