

**APW WYOTT EQUIPMENT LIMITED WARRANTY**

APW WYOTT Foodservice Equipment Company warrants its equipment against defects in materials and workmanship, subject to the following conditions:

This warranty applies to the original owner only and is not assignable.

Should any product fail to function in its intended manner under normal use within the limits defined in this warranty, at the option of APW WYOTT such product will be repaired or replaced by APW WYOTT or its Authorized Service Agency. APW WYOTT will only be responsible for charges incurred or service performed by its Authorized Agencies. The use of other than APW WYOTT Authorized Service Agencies will void this warranty and APW WYOTT will not be responsible for such work or any charges associated with same. The closest APW WYOTT Authorized Service Agency must be used.

This warranty covers products shipped into the 48 contiguous United States, Hawaii, metropolitan areas of Alaska and Canada. There will be no labor coverage for equipment located on any island not connected by roadway to the mainland.

**TIME PERIOD:**

One-year parts, one-year labor, effective from the date of purchase by the original owner. The Authorized Service Agency may, at their option, require proof of purchase. Parts replaced under this warranty are warranted for the unexpired portion of the original product warranty only.

**EXCEPTIONS:**

\*Gas/Electric Cookline - Models GCB, GCRB, GF, GGM, GGT, GHP-H, GWW, EBC, EF, EG, EHP, EWW Three (3) Year Warranty on all component part, except switches and thermostats. (2 additional years on parts only - No labor on second or third year.)

\*Heat Strips - Models FD - Two (2) Year Warranty on element only - No labor second year.

\*Glass Windows, Door Seals, Rubber Seals, Light Bulbs, Broiler Briquettes 90 Day Material Only - No labor.

In all cases parts covered by extended warranty will be shipped FOB the factory after the first year.

**PORTABLE CARRY-IN PRODUCTS**

Equipment weighing over 70 pounds or permanently installed will be serviced on-site as per the terms of this warranty. Equipment weighing 70 pounds or under, and which is not permanently installed i.e., with cord and plug, is considered portable and is subject to the following warranty handling limitations.

If portable equipment fails to operate in its intended manner on the first day of connection, or use, at APW WYOTT's option or its Authorized Service Agency, it will be serviced on-site or replaced.

From day two through the conclusion of this warranty, portable units must be taken or sent prepaid to the APW WYOTT Authorized Service Agency for in-warranty repairs. No mileage or travel charges are allowed on portable units after the first day of use. If the customer wants on-site service they may receive same by paying the travel and mileage charges.

**EXCLUSIONS:**

The following conditions are not covered by warranty.

\*Equipment failure relating to improper installation, improper utility connection or supply and problems due to ventilation.

\*Equipment that has not been properly maintained, calibration of controls, adjustments, damage from improper cleaning and water damaged controls.

\*Equipment that has not been used in an appropriate manner, or has been subject to misuse or misapplication, neglect, abuse, accident, alteration, negligence, damage during transit, delivery or installation, fire, flood, not or act of God.

\*Equipment that has had the model number or serial number removed or altered.

If the equipment has been changed, altered, modified or repaired by other than a qualified service technician during or after the warranty period then the manufacturer shall not be liable for any damages to any person or property which may result from the use of the equipment thereafter.

This warranty does not cover services performed at overtime or premium labor rates. Should service be required at times which normally involve overtime or premium labor rates, the owner shall be charged for the difference between normal service rates and such premium rates. APW WYOTT does not assume any liability for extended delays in replacing or repairing any items beyond its control.

In all cases the use of other than APW WYOTT authorized OEM replacement parts will void this warranty.

This equipment is intended for commercial use only. Warranty is void if equipment is installed in other than commercial application.

THE FOREGOING WARRANTY IS IN LIEU OF ANY AND ALL OTHER WARRANTIES EXPRESSED OR IMPLIED INCLUDING ANY IMPLIED WARRANTY OF MERCHANTABILITY OR FITNESS AND CONSTITUTES THE ENTIRE LIABILITY OF APW WYOTT IN NO EVENT DOES THE LIMITED WARRANTY EXTEND BEYOND THE TERMS STATED HEREIN.

P/N 88027-00, Revised 1/01

**IMPORTANT  
FOR FUTURE REFERENCE**  
Please complete this information and retain this manual for the life of the equipment.  
MODEL # \_\_\_\_\_  
SERIAL # \_\_\_\_\_  
DATE PURCHASED \_\_\_\_\_  
For Warranty Service and/or Parts this information is required



**PRODUCT MANUAL**  
Safety Instructions  
Installation Instructions  
Operation Instructions  
Maintenance Instructions  
Replacement Parts List  
Warranty/Service Information

**COLDWELLS**

**MODELS CW-1, CW-2, CW-3**  
**CW-4 AND CW-5**



**WARNING**  
IMPROPER INSTALLATION, OPERATION, SERVICE OR MAINTENANCE CAN CAUSE PROPERTY DAMAGE, INJURY OR DEATH. READ THESE INSTRUCTIONS THOROUGHLY BEFORE INSTALLING, OPERATING, MAINTAINING OR SERVICING THIS EQUIPMENT.

**APW/WYOTT Foodservice Equipment Co.**  
P.O. Box 1829  
Cheyenne, WY 82003  
(307) 634-5801  
FAX: (307) 637-8071  
General Information

**THIS MANUAL SHOULD BE RETAINED FOR FUTURE REFERENCE**

**CAUTION**

The models are designed, built and sold for commercial use. If these models are positioned so the general public can use the equipment, make sure that all cautions, warnings and operating instructions are clearly posted near each unit so that anyone using the equipment will use it correctly and not injure themselves or harm the equipment.

**WARNING**

CHECK THE DATA PLATE ON THIS UNIT BEFORE INSTALLATION. CONNECT THE UNIT ONLY TO THE VOLTAGE AND FREQUENCY LISTED ON THE DATA PLATE. CONNECT ONLY TO 1- OR 3-PHASE AS LISTED ON THE DATA PLATE.

**WARNING**

IMPROPER INSTALLATION, SERVICE, OR MAINTENANCE CAN CAUSE PROPERTY DAMAGE, INJURY OR DEATH. READ THESE INSTRUCTIONS THOROUGHLY BEFORE INSTALLING, OPERATING, MAINTAINING OR SERVICING THIS EQUIPMENT.

**WARNING**

ELECTRICAL AND GROUNDING CONNECTIONS MUST COMPLY WITH THE APPLICABLE PORTIONS OF THE NATIONAL ELECTRICAL CODE AND/OR OTHER LOCAL ELECTRICAL CODES.

**WARNING**

DISCONNECT ELECTRICAL POWER SUPPLY AND PLACE A TAG AT THE DISCONNECT SWITCH INDICATING THAT YOU ARE WORKING ON THE CIRCUIT.

Install according to the spacing requirements listed in the installation section of this manual. We strongly recommend having a competent professional install this equipment. A licensed electrician should make the electrical connections and connect power to the unit. Local codes should always be used when connecting these units to electrical power. In the absence of local codes, use the latest version of the National Electrical Code.

Maintenance and repair should be handled by a factory authorized agent. Before doing any maintenance or repair, contact APW Wyott Foodservice Equipment Company at (800) 752-0863 or (800) 783-2251, Monday-Friday, 7 am—4:30 pm Mountain Standard Time.

**WARNING**

NEVER CLEAN ANY ELECTRICAL UNIT BY IMMERSING IT IN WATER. TURN UNIT OFF BEFORE CLEANING SURFACE.

**WARNING**

APPLIANCE MUST BE CONNECTED BY AN EARTHING CABLE TO ALL OTHER UNITS IN THE COMPLETE INSTALLATION AND, THENCE, TO AN INDEPENDENT EARTH CONNECTION.

**NOTICE** THE UNIT, WHEN INSTALLED, MUST BE ELECTRICALLY GROUNDING AND COMPLY WITH LOCAL CODES OR, IN THE ABSENCE OF LOCAL CODES, WITH THE NATIONAL ELECTRICAL CODE ANSI/NFPA 70-LATEST EDITION.

CANADIAN INSTALLATION MUST COMPLY WITH CSA-STANDARD C.22.2 No. 0 M1982 General Requirements - Canadian Electrical Code, Part II, 109-M1981 - Commercial Cooking Appliances.

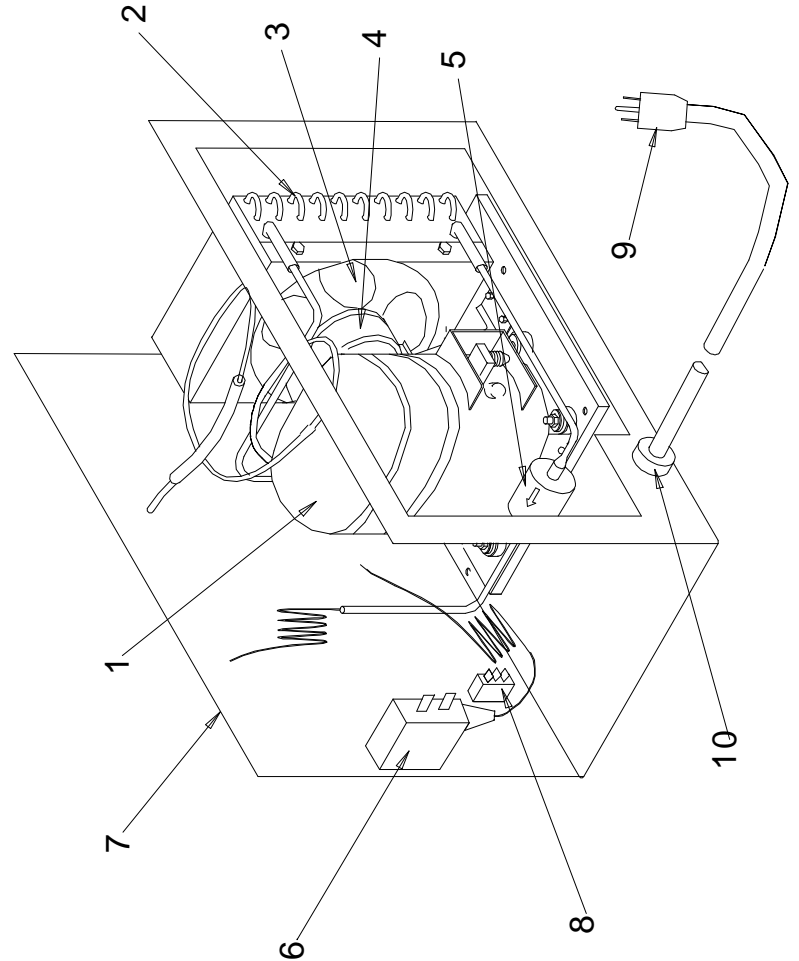
**NOTICE** Local codes regarding installation vary greatly from one area to another. The National Fire Protection Association, Inc., states in its NFPA 96 latest edition that local codes are "authority having jurisdiction" when it comes to requirements for installation of equipment. Therefore, installations should comply with all Local codes.

**WARNING**

**SHOCK HAZARD**  
DEENERGIZE ALL POWER TO EQUIPMENT BEFORE CLEANING THE EQUIPMENT.

**PARTS LIST**

DESCRIPTION	CW-1	CW-2	CW-3	CW-4	CW-5
1 Compressor 1/3 Hp	-	-	-	-	18050-50
1 Compressor 1/4 Hp	-	18049-50	18049-50	18049-50	-
1 Compressor 1/5 Hp	18069-51	-	-	-	-
2 Condenser	-	-	-	-	17039-50
2 Condenser	18013-00	18013-00	18013-00	18013-00	-
3 Fan Blade	12000-00	12000-00	12000-00	12000-00	12000-00
4 Fan Motor	12002-00	12002-00	12002-00	12002-00	12002-00
5 Drier	18120-50	18120-50	18120-50	18120-50	18120-50
6 Pressure Switch	13425-00	13425-00	13425-00	13425-00	13425-00
7 Compressor Housing	218075-25	218075-25	218075-25	218075-25	218075-25
8 Power Switch	13056-10	13056-10	13056-10	13056-10	13056-10
9 Cordset 16-3	15067-00	15067-00	15067-00	15067-00	15067-00
10 Strain Relief	89680-00	89680-00	89680-00	89680-00	89680-00



**MAINTENANCE**

Once a week, or more often if necessary, clean the coldwell thoroughly. Turn off the coldwell and allow it to warm.

Pan supports are to be removed for cleaning. Machine washing is preferred but hand washing is acceptable. Follow all state and local codes for sanitation when cleaning the pan supports.

**STAINLESS STEEL:** To remove normal dirt or product residue from stainless steel, use ordinary soap and water (with or without detergent) applied with a sponge or cloth. Dry thoroughly with a clean cloth. Never use vinegar or corrosive cleaner. Do not use chlorine based cleaners.

To remove grease and food splatter or condensed vapors that have baked on the equipment, apply cleaners to a damp cloth or sponge and rub cleanser on the metal in the direction of the polished lines on the metal. Rubbing cleanser as gently as possible in the direction of the polished lines will not mar the finish of the stainless steel. NEVER RUB WITH A CIRCULAR MOTION. Soil and burned on deposits which do not respond to the above procedure can usually be removed by rubbing the surface with SCOTCH-BRITE scouring pads or STAINLESS scouring pads.

**NEVER USE** a wire brush, steel or abrasive scouring pads (except stainless), scraper, file or other steel tools. Surfaces which are marred collect dirt more rapidly and become more difficult to clean. Marring also increases the possibility of corrosive attack.

**NEVER** use any corrosive cleaner. Use only cleaners approved for stainless steel.

**NEVER** use cleaning solvents with a hydrocarbon base.

**⚠ WARNING**

NEVER CLEAN ANY ELECTRICAL UNIT BY IMMERSING IT IN WATER. TURN UNIT OFF BEFORE CLEANING SURFACE.

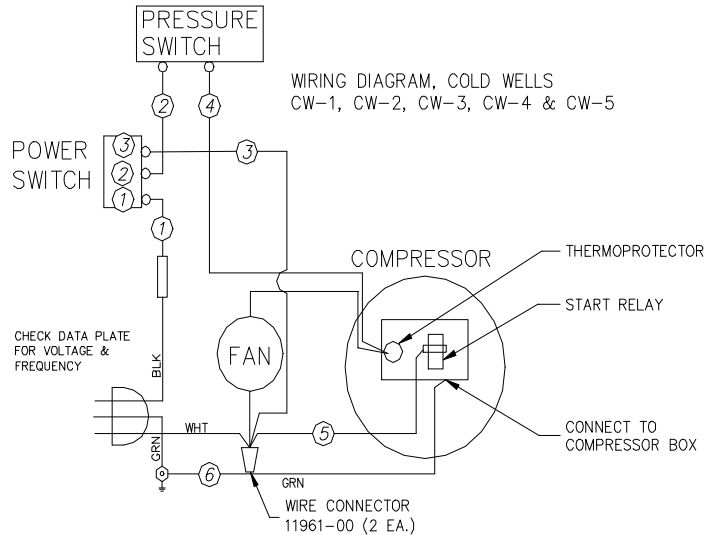
**⚠ CAUTION**

DO NOT USE ordinary steel wool as any particles left on the surface will rust.

**⚠ WARNING**

**SHOCK HAZARD**

DEENERGIZE ALL POWER TO EQUIPMENT BEFORE CLEANING THE EQUIPMENT.



**WIRING DIAGRAM**

Congratulations on your purchase of APW Wyott Foodservice commercial cooking or refrigeration equipment. APW Wyott Foodservice takes pride in the design and quality of our products. When used as intended, and with proper care and maintenance, you will experience years of reliable operation from this equipment. To ensure best results, it is important that you read and follow the instructions in this manual carefully.

**TABLE OF CONTENTS**

- Troubleshooting.....3
- Safety Precautions .....4
- Specifications .....4
- Installation .....4
- Electrical Connections .....5
- Operating Instructions .....5
- Maintenance .....6
- Wiring Diagram .....7
- Parts Lists.....8
- Warranty.....12

**LOCATION OF DATA PLATE**

The data plate for the cold well is located on the compressor housing above the power switch.

**IMMEDIATELY INSPECT FOR SHIPPING DAMAGE**

All containers should be examined for damage before and during unloading. The freight carrier has assumed responsibility for its safe transit and delivery. If equipment is received damaged, either apparent or concealed, a claim must be made with the delivering carrier.

- A. Apparent damage or loss must be noted on the freight bill at the time of delivery. It must then be signed by the carrier representative (Driver). If this is not done, the carrier may refuse the claim. The carrier can supply the necessary forms.
- B. For concealed damage or loss, if not apparent until after equipment is uncrated, a request for inspection must be made to the carrier within 15 days. The carrier should arrange an inspection. Be certain to hold all contents and packaging material.

Installation and start up should be performed by a qualified installer who thoroughly read, understands and follows these instructions.

**GENERAL TROUBLESHOOTING**

If the unit fails to operate, check the following.

1. Make sure the unit is connected to a live power source.
2. Check the circuit breaker to be sure it has not been tripped.
3. Check if the power switch is on and the indicator light is glowing.
4. Check the data plate and make sure the unit is operating on the proper voltage.

If the above checks out and you still have problems, call an APW Wyott Foodservice authorized service agency.

**NOTICE:** Service work should be performed only by a qualified technician who is experienced in and knowledgeable with the operation of commercial gas, electric, steam cooking equipment. Contact the Authorized Service Agency for reliable service, dependable advice or other assistance and for genuine factory parts.

Warranty will be void and the manufacturer is relieved of all liability if:


- A. Service work is performed by other than an APW Wyott Foodservice authorized Service Agency; or
- B. Other than Genuine APW Wyott Foodservice replacement parts are installed.

A current listing of all authorized APW Wyott Foodservice authorized parts/service distributors is included with this product manual at the time of shipment. In the absence of this list, you can call the APW Wyott 24-hour Service Hot Line which gives access to the nearest Authorized APW Wyott parts/service distributor. Call 1-800-733-2203.


**SAFETY PRECAUTIONS**

Before installing and operating this equipment, be sure everyone involved in its operation is fully trained and is aware of all precautions. Accidents and problems can result by a failure to follow fundamental rules and precautions.

The following words and symbols, found in this manual, alert you to hazards to the operator, service personnel or the equipment. The words are defined as follows:

 **DANGER**


THIS SYMBOL WARNS OF IMMINENT HAZARD WHICH WILL RESULT IN SERIOUS INJURY OR DEATH.

 **WARNING**

THIS SYMBOL REFERS TO A POTENTIAL HAZARD OR UNSAFE PRACTICE WHICH COULD RESULT IN SERIOUS INJURY OR DEATH.

 **NOTICE**

This symbol refers to information that needs special attention or must be fully understood even though not dangerous.

 **CAUTION**

This symbol refers to a potential hazard or unsafe practice which may result in minor or moderate injury or product or property damage.

**SPECIFICATIONS**

**Electrical**

CW-1	120 Volt, 60 Hz, 1 Phase, 4 Amp
CW-1	230 Volt, 50/60 Hz, 1 Phase, 2 Amp
CW-2	120 Volt, 60 Hz, 1 Phase, 4 Amp
CW-2	230 Volt, 50/60 Hz, 1Phase, 2 Amp
CW-3	120 Volt, 60 Hz, 1 Phase, 4 Amp
CW-3	230 Volt, 50/60 Hz, 1 Phase, 2 Amp
CW-4	120 Volt, 60 Hz, 1 Phase, 4 Amp
CW-4	230 Volt, 50/60 Hz, 1 Phase, 2 Amps
CW-5	120 Volt, 60 Hz, 1 Phase, 5.5 Amps
CW-5	230 Volt, 50/60 Hz, 1 Phase, 2.8 Amps

**Compressor**

1/5 Hp
1/5 Hp
1/4 Hp
1/4 Hp
1/4 Hp
1/4 Hp
1/4 Hp
1/4 Hp
1/3 Hp
1/3 Hp

**Charge**

9.0 oz. - R134a
9.0 oz. - R134a
10.0 oz. - R134a
10.0 oz. - R134a
11.0 oz. - R134a
11.0 oz. - R134a
12.0 oz. - R134a
12.0 oz. - R134a
13.0 oz. - R134a
13.0 oz. - R134a

**Dimensions**

CW-1	19-1/2" (495.3mm) x 28" (711.2mm) x 23-13/16" (604.8mm)
CW-2	28" (711.2mm) x 32-13/16" (833.4mm) x 23-13/16" (604.8mm)
CW-3	28" (711.2mm) x 46-1/8" (1171.6mm) x 23-13/16" (604.8mm)
CW-4	28" (711.2mm) x 59-7/16" (1509mm) x 23-13/16" (604.8mm)
CW-5	28" (711.2mm) x 72-3/4" (1847.9MM) x 23-13/16" (604.8mm)

**Recommended Cut-out**

18" (457.2mm) x 26-1/2" (673.1mm)
26-1/2" (673.1mm) x 31-5/16" (795.3mm)
26-1/2" (673.1mm) x 44-5/8" (1133.5mm)
26-1/2" (673.1mm) x 57-15/16" (1471.6mm)
26-1/2" (673.1mm) x 71-1/4" (1809.6mm)

**INSTALLATION**

Clean the unit before using. Wipe body and the inside of the unit with a hot, wet cloth to remove any shipping dust or protective oil.

The counter base, if enclosed, must have ventilation openings at least equivalent in size to the condenser inlet and discharge areas of the model installed.

Cold wells are intended for use in rooms having an ambient temperature of 30°C (86°F) or less.

 **CAUTION**

This device should never be positioned upside down or on its side. If the unit arrived or was stored in any position other than "THIS END UP" as marked on the shipping container, then allow the unit to set upright 24 hours before applying power or turning on the unit. Failure to do this will cause the unit to function incorrectly. The unit will not be able to cool to the desired temperature.

**ELECTRICAL CONNECTIONS**

Check the data plate to determine for which voltage this unit is wired and what voltage service is to use.

When installed, the plug for this unit should be accessible.

 **CAUTION**

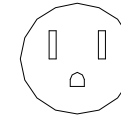
Check the data plate on this unit before installation. Connect the unit only to the voltage and frequency listed on the data plate. Connect only to 1– or 2-phase as listed on the data plate.

 **CAUTION**

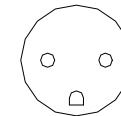
If the power cord is damaged, replace only with an identical power cord.

 **WARNING**

**IMPROPER GROUNDING COULD RESULT IN ELECTRICAL SHOCK.**  
THIS APPLIANCE IS EQUIPPED WITH A THREE-PRONG (GROUNDED) PLUG FOR YOUR PROTECTION AGAINST SHOCK HAZARD AND SHOULD BE PLUGGED DIRECTLY INTO A PROPERLY GROUNDED THREE-PRONG RECEPTACLE. DO NOT CUT OR REMOVE THE GROUNDING PRONG FROM THIS PLUG.



120 Volt Plug



230 Volt 50 Hz  
CE plug

**OPERATING INSTRUCTIONS**

Plug Coldwell in and turn on the power switch. The unit has been calibrated at the factory for 35° F-39° F at sea level. Wait about 45 to 60 minutes for the unit to cool.If the product is too cold or too warm, adjust the pressure switch. The pressure switch adjustment is located behind the notched panel on the compressor housing.

Disconnect power from the unit before removing any panels to access controls.

Disconnect power from the unit and remove the notched panel on the compressor housing. The pressure switch is located above the power switch. To adjust the temperature, turn the square screw on the top of the pressure switch. Turning the screw 1/4 turn clockwise will lower the temperature approximately 5° F . Conversely, turning the screw 1/4 turn counterclockwise will raise the temperature 5° F . If you are unable to set your Coldwell to the desired temperature, contact your factory authorized service agent for help with adjustments.

1. All food service equipment should be operated by trained personnel.
2. Never hold food below 150°F or above 40°F.

 **WARNING**

**SHOCK HAZARD**  
DE-ENERGIZE ALL POWER TO EQUIPMENT BEFORE CLEANING THE EQUIPMENT.

 **WARNING**

THIS UNIT IS NOT INTENDED TO HOLD POTENTIALLY HAZARDOUS FOODS SUCH AS UNCOOKED OR UNPRESERVED MEATS AND SAUSAGES.